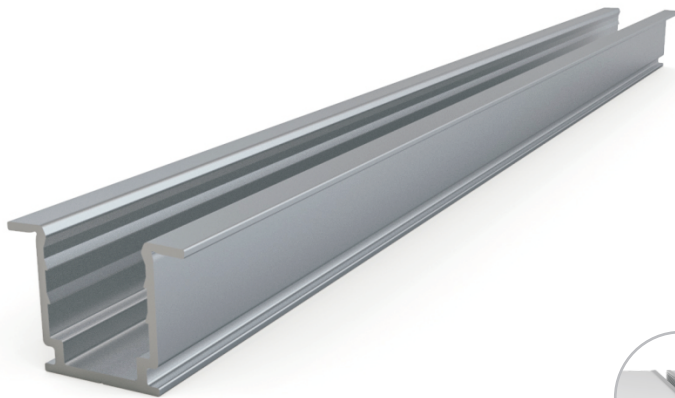
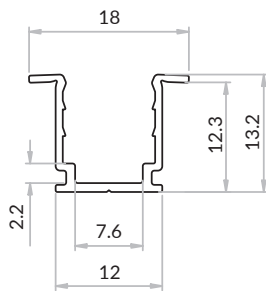


Wave Mini Recessed Aluminum Channel

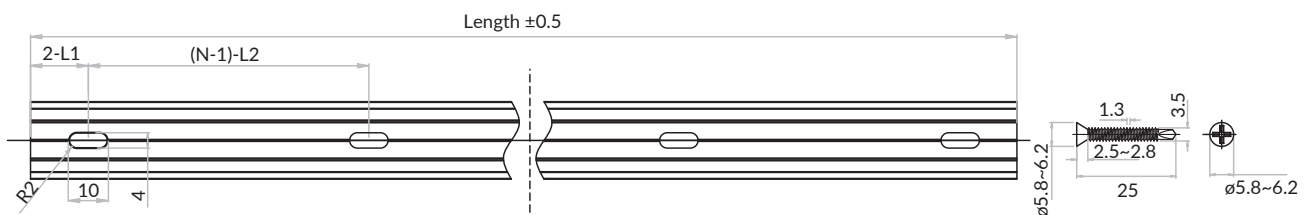
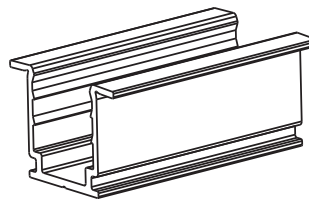


The Wave Mini Recessed Aluminum Channel uses high quality 6063 aluminum. It can control installation tolerances by shielding rough edges and gaps of oversized grooves.

Dimensions (mm):



Tolerance: $\pm 0.2\text{mm}$



Note:

- 2-L1 refers to two of symmetric L1 in each piece of profile.
- (N-1)-L2 refers to (N minus one) of symmetric L2 in each piece of profile. "N" hereby stands for its corresponding "Hole Number" in the below table

Part Number	Length	L1	L2	Slotted Hole	Hole Number
CL-10-R-RA-3C5-SD	35mm/1.38in	17.5mm/0.69in	/	4*10mm/0.16*0.39in	1
CH-10-R-RA-0M5-SD	500mm/19.68in	50mm/1.97in	200mm/7.87in	4*10mm/0.16*0.39in	3
CH-10-R-RA-01M-SD	1000mm/39.37in	100mm/3.93in	200mm/7.87in	4*10mm/0.16*0.39in	5
CH-10-R-RA-02M-SD	2000mm/78.74in	100mm/3.93in	200mm/7.87in	4*10mm/0.16*0.39in	10