

VIVID
S 270
RGB
SILICONE 24V

Version 1.5



For More Information

Toll Free: 1 (888) 580-6366



Light Dimension	0.45 x 1.14in (11.5x29mm)		
Output	RGB		
LED Light	SMD LED Chip		
Max Run Length *1*2			
Single Feed	Full Load: 32.81ft (10m)	Dynamic Load: 49.21ft (15m)	
Double Feed	Full Load: 65.62ft (20m)	Dynamic Load: 98.43ft (30m)	
Light Surface	Round profile 270°		
Lumen Maintenance	70,000 Hours L70 @ 25°C : 90,000 L50 @ 25°C 50,000 Hours L70 @ 50°C : 70,000 Hours L50 @ 50°C		
Electrical			
Input Voltage	24V DC		
Power Consumption	3.66W/ft (12W/m)		
Physical			
LED Count	18 LEDs / ft (60 LEDs/m)		
LED Spacing	0.66in (16.67mm)		
Cutting Unit Length	3.94in (100mm) (6 LEDs)		
Thermal Management	Free air convection		
Fixture Connections	End, side & bottom lead wires		
Minimum Bend Diameter	4.72in (120mm) (Side Bending)		
Temperature Ranges			
Installation	-40°F to 122°F (-40°C to 50°C)		
Operating	-40°F to 131°F (-40°C to 55°C)		
Humidity	0-95% non condensing		
Dependability			
Warranty	10 Year Limited Warranty		
Safety			
Certification	Tested to UL & CSA by Underwriters Laboratory for use in USA and Canada, complies with California Title 24 Requirements, Lighting Facts. Exceeds ANSI C78.377A, CE & RoHS Compliant.		
IP Rating	IP68 with appropriately rated accessories		

*1 Max Run Length: Dynamic = when the R, G, B channels are not operating at 100%
 Full Load = when the R, G, B channels are operating at 100%

Available Colors

Color	CCT Wavelength
Red	618-624nm
Green	522-528nm
Blue	468-474nm
R+G+B (White)	N/A

Lumen Count

Color	Per Foot	Per Meter
Red	>18.29lm	>60lm
Green	>42.68lm	>140lm
Blue	>9.14lm	>30lm
R+G+B (White)	>70.12lm	>230lm

*Color Jackets:

For standard or custom color jacket options, contact your Account Manager. Min. order quantity of 656ft (200m).

Beam Angle

Bending Diameter

Flame Resistant

UV Resistant

Solvents Resistant

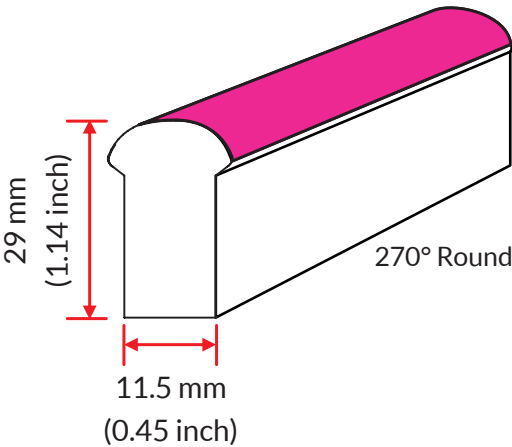
Saltwater Resistant

IP68 Protection

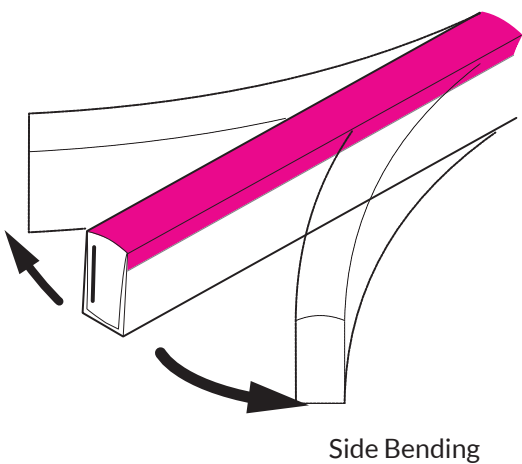
IK08 Protection

10 Year Warranty

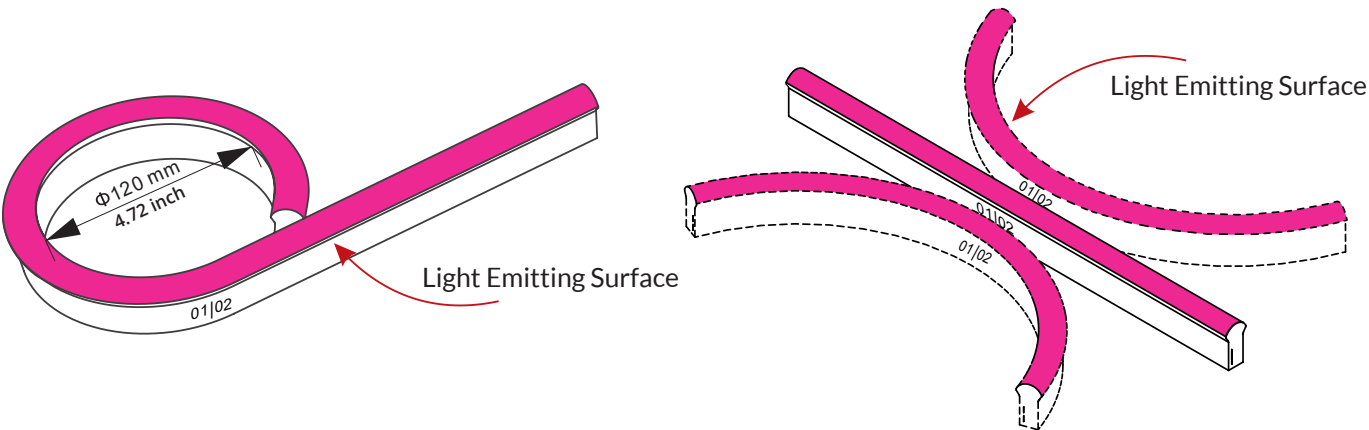
Light Profile



Bending Direction



Minimum Bending Diameter

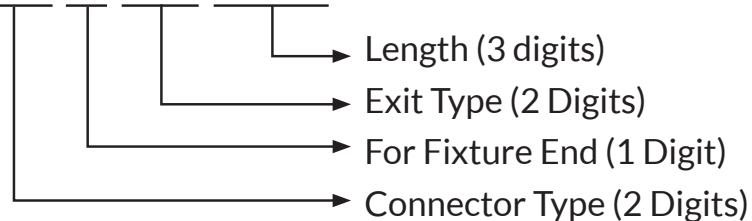


Fixtures

SF-11D-1-01-4W-E-RGB-24DV

Lead Connector

FA-11D-1-01-4W-XX-X-XX-XXX-S

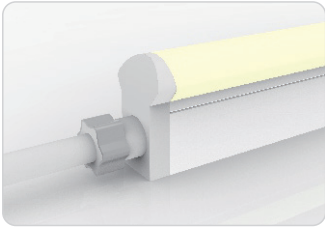


Connector Type (2 Digits)	For Fixture End (1 digit)	Exit Type (2 digits)	Length (3 digits)
SC - Snap Conenctor	1 - Input side	EN - End	0M3 - 0.98ft (30cm)
SE - Seamless	2 - Output side	BO - Bottom	01M - 3.28ft (1m)
	0 - Jumpers/T-Feeds/ Seamless (or Submersible) Bottom/ Seamless (or Sub- mersible) End	SL - Side left	03M - 9.84ft (3m)
		SR - Side right	05M - 16ft (5m)
		EJ - End jumper	10M - 32.81ft (10m)
		BJ - Bottom jumper	000 - For End Cap
		TF - Power T feed	

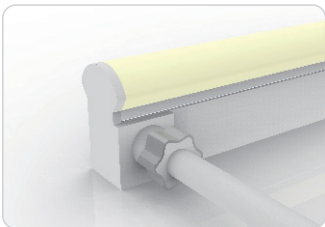
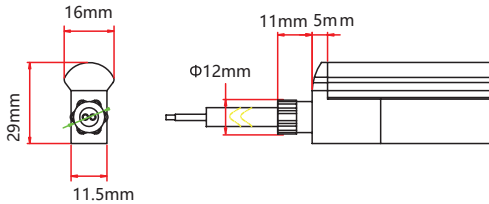
For full part number naming rules, please refer to the document on www.glls.com/support/documentation/

IP68: Submersible. Factory Assembly only.

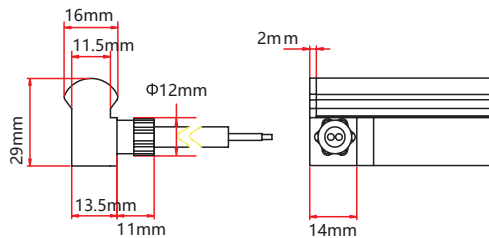
Seamless



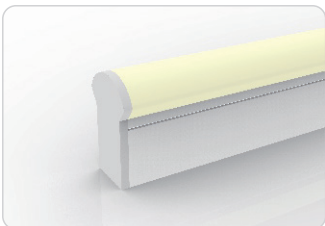
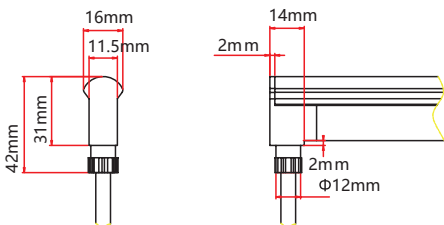
Seamless End Exit
FA-11D-1-01-4W-SE-0-EN-XXX-S



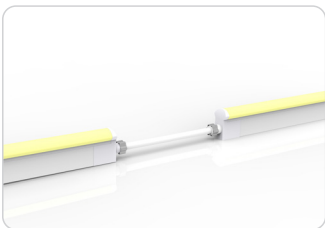
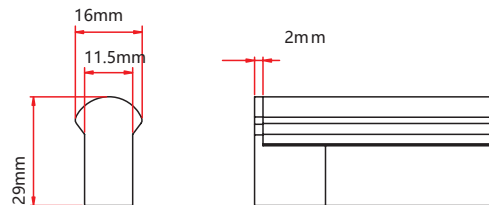
Seamless Side Exit
FA-11D-1-01-4W-SE-1-SR-XXX-S
FA-11D-1-01-4W-SE-2-SL-XXX-S



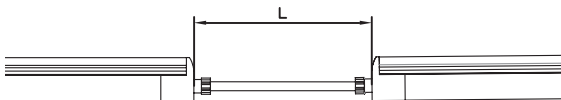
Seamless Bottom Exit
FA-11D-1-01-4W-SE-0-BO-XXX-S



Seamless End Cap
FA-11D-1-01-0W-SE-1-EC-000-P
FA-11D-1-01-0W-SE-2-EC-000-P

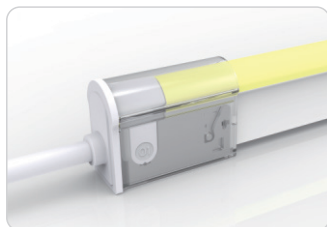


Seamless Jumper
FA-11D-1-01-4W-SE-0-EJ-XXX-S



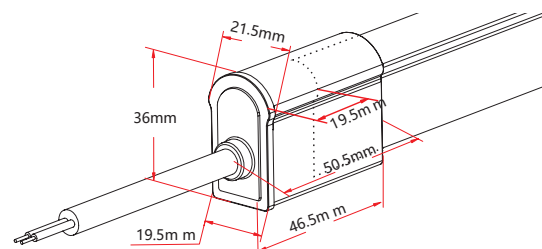
IP67: Rated for outdoor use.
Factory Assembly or DIY.

Snap



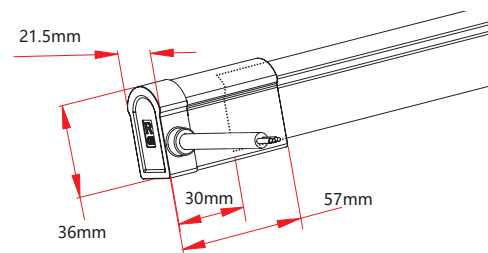
Snap End Exit

NA-11D-1-01-4W-SC-1-EN-XXX-S
NA-11D-1-01-4W-SC-2-EN-XXX-S



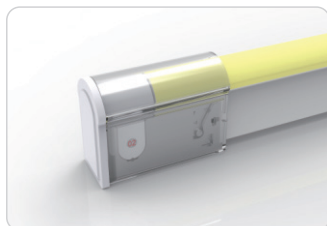
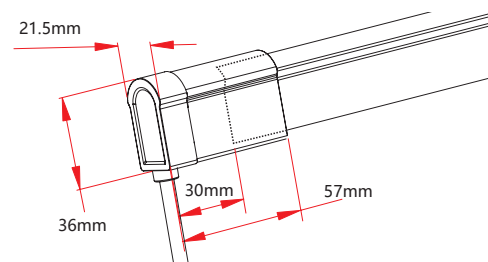
Snap Side Exit

NA-11D-1-01-4W-SC-1-SL-XXX-S
NA-11D-1-01-4W-SC-2-SL-XXX-S
NA-11D-1-01-4W-SC-1-SR-XXX-S
NA-11D-1-01-4W-SC-2-SR-XXX-S



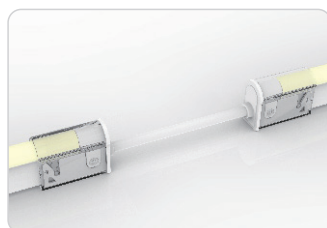
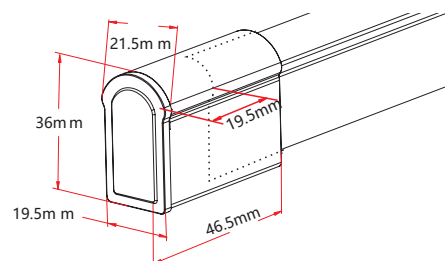
Snap Bottom Exit

NA-11D-1-01-4W-SC-1-BO-XXX-S
NA-11D-1-01-4W-SC-2-BO-XXX-S



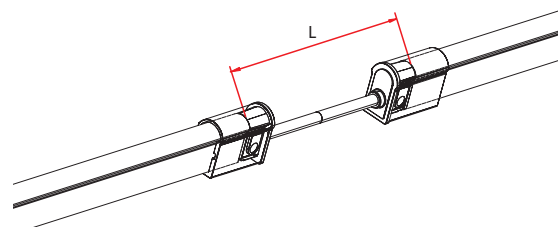
Snap End Cap

NA-11D-1-01-0W-SC-1-EC-000-P
NA-11D-1-01-0W-SC-2-EC-000-P



Snap Jumper

NA-11D-1-01-4W-SC-0-EJ-XXX-S

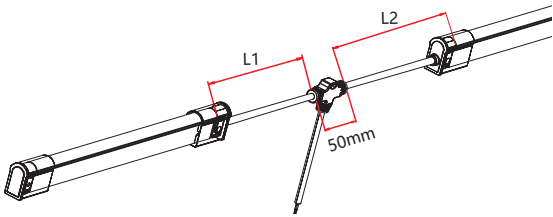


IP67: Rated for outdoor use.
Factory Assembly or DIY.

Snap



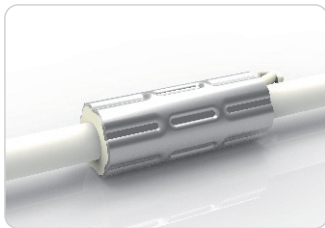
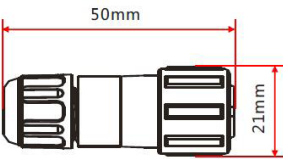
Snap Power T Feed
NA-11D-1-01-4W-SC-0-TF-XXX-S



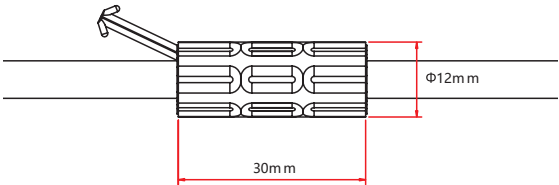
Barrel Connectors



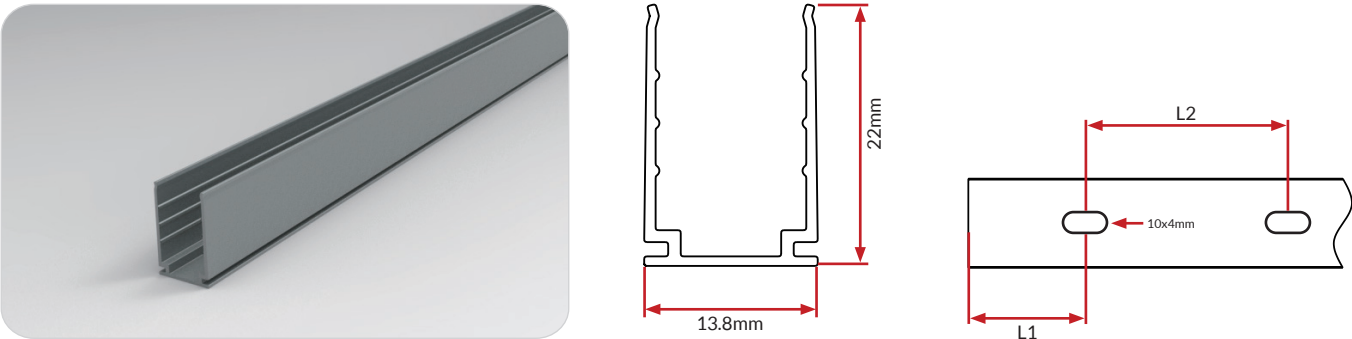
Barrel Connectors
NA-XX-BC-DC-CXX-F
NA-XX-BC-DC-CXX-M
NA-XX-BN-XXA-CXX-F
NA-XX-BN-XXA-CXX-M
NA-XX-PL-XXA-CXX-F
NA-XX-PL-XXA-CXX-M



Anti-Wicking Ferrule

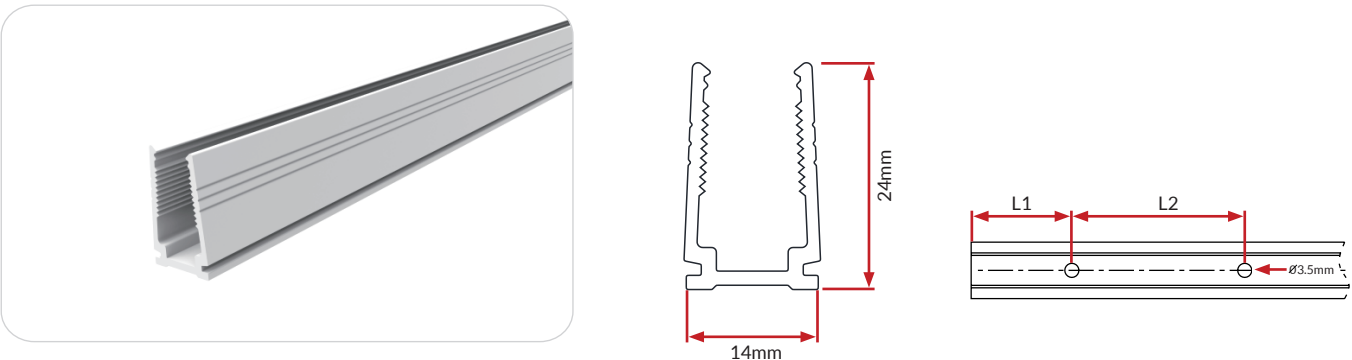


Standard Anodized Aluminum Channel



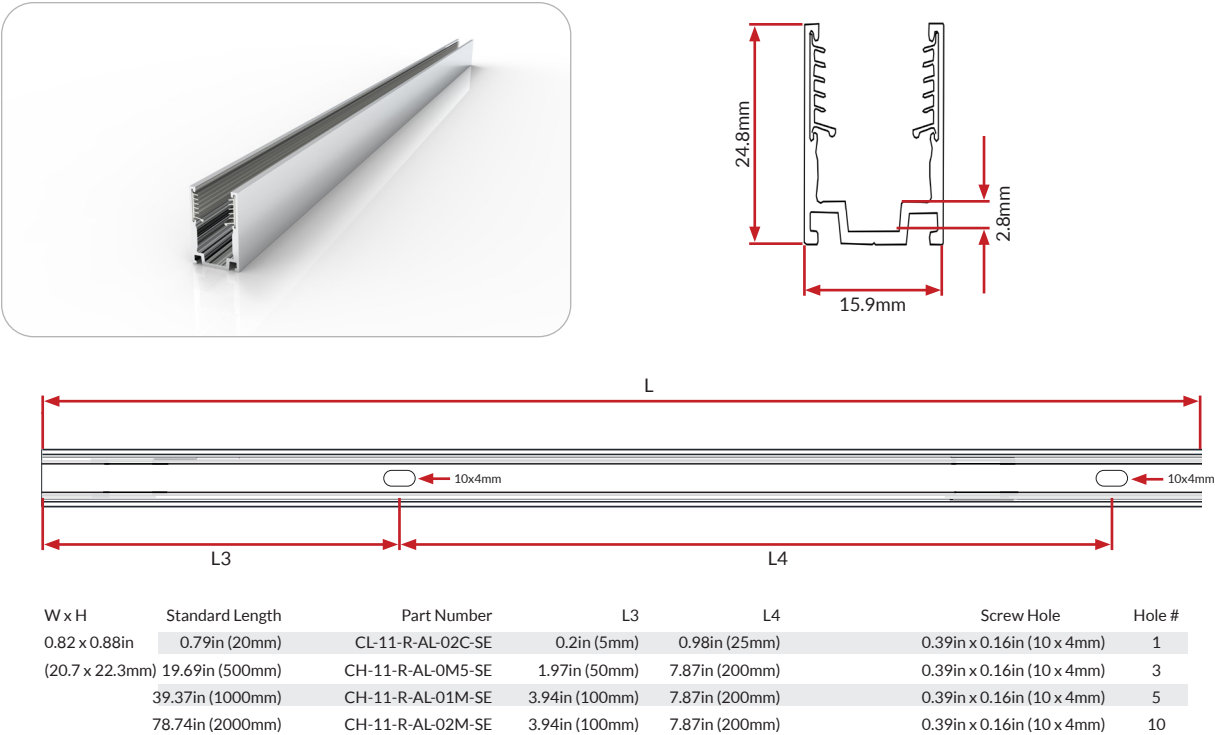
W x H	Standard Length	Part Number	L1		L2	Screw Hole	Hole #
0.54 x 0.87in (13.8 x 22mm)	1.38in (35mm)	CL-11-R-AL-3C5-SD	0.69in (17.5mm)		/	0.39x0.16in(10x4mm)	1
	19.69in (500mm)	CH-11-R-AL-0M5-SD	1.97in (50mm)	7.87in (200mm)		0.39x0.16in(10x4mm)	3
	39.37in (1000mm)	CH-11-R-AL-01M-SD	3.94in (100mm)	7.87in (200mm)		0.39x0.16in(10x4mm)	5
	78.74in (2000mm)	CH-11-R-AL-02M-SD	3.94in (100mm)	7.87in (200mm)		0.39x0.16in(10x4mm)	10

Plastic Channel

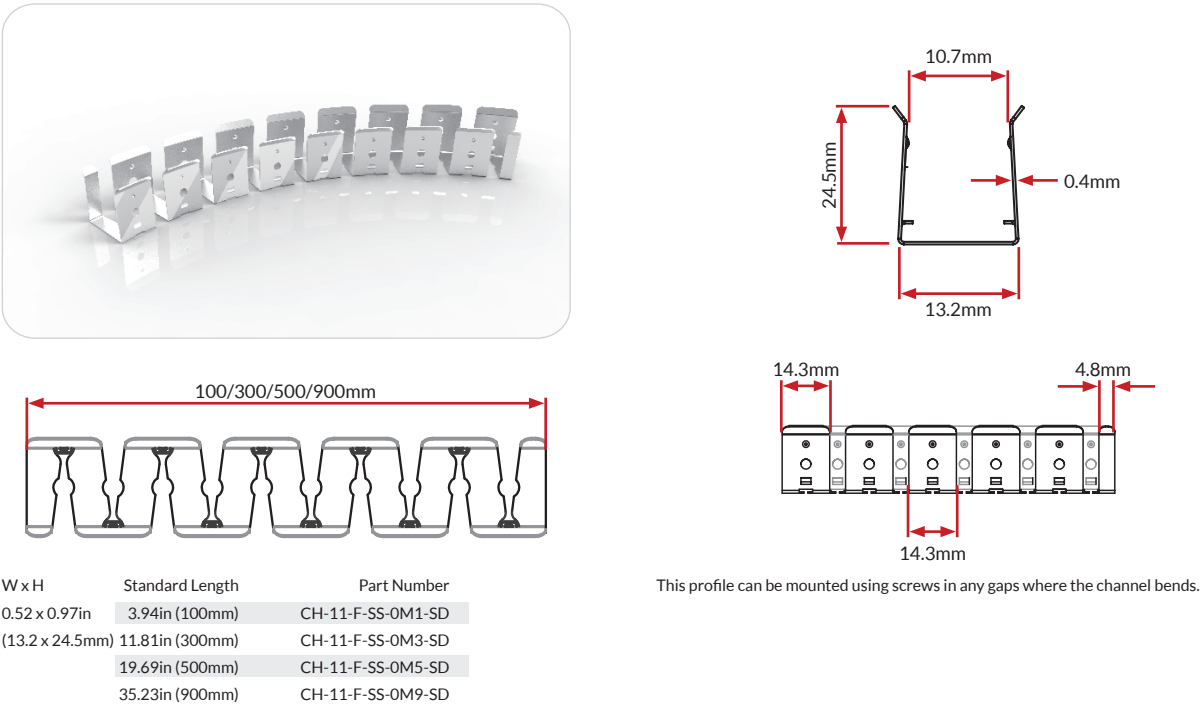


W x H	Standard Length	Part Number	L1		L2	Screw Hole	Hole #
0.55 x 0.94in (14 x 24mm)	19.69in (500mm)	CH-11-R-PL-0M5-SD	1.97in (50mm)	7.87in (200mm)		Ø 0.14in (3.5mm)	3
	39.37in (1000mm)	CH-11-R-PL-01M-SD	3.94in (100mm)	7.87in (200mm)		Ø 0.14in (3.5mm)	5
	78.74in (2000mm)	CH-11-R-PL-02M-SD	3.94in (100mm)	7.87in (200mm)		Ø 0.14in (3.5mm)	10

Standard Aluminum Channel with Silicone Grip



Stainless Steel Flexible Channel



Certifications

	Testing Organization	Certificate Serial N°	Report Reference
UL 2108	UL	20160726-E360029	E360029-2013
CE-EMC	SGS	SZEM1702001259LMV	SZEM160600421302

Fixture Testing

Optical Testing

Spectrum Analysis	IES LM 79 (Lumen, CCT, CRI, XY, SDCM, wavelength)
Photometric Distribution	IES LM 73 (Lumen intensity distribution & Lux diagram)
Lumen Maintenance & Lifetime	IES LM 84 & IES TM28

Temperature Testing

Normal Temperature Test	UL1598 & UL2388 & IEC60598-1 & IEC60598-2-21
Abnormal Operation Test	UL1598 & UL2388 & IEC60598-1 & IEC60598-2-21

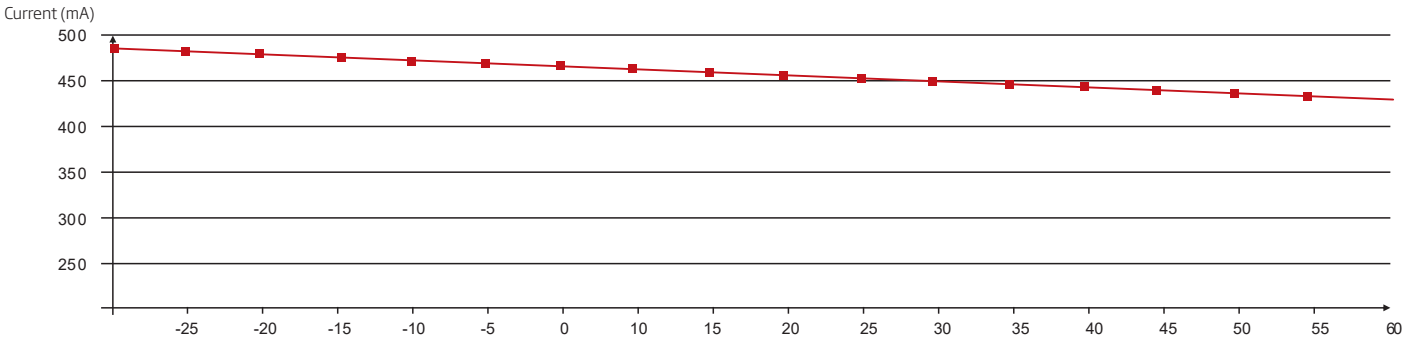
Durability Testing

Bending Test	Manufacturer-defined, 500 cycles
Swing Test	UL2388, >750 cycles
Tensile Test	Manufacturer-defined, > the weight of light in max. connection length double feed
Twist Test	Max connection length double feed Manufacturer-defined, >200 cycles
Ball Impact	UL1598 & UL2388 & IEC60598-1 & IEC60598-2-21
IK07 IK08	IEC62262

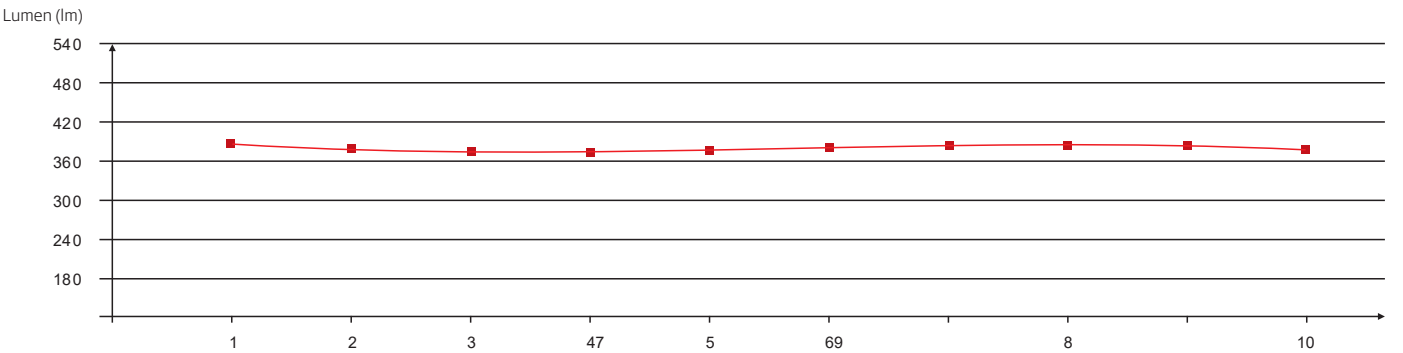
Environmental Testing

Chlorinated Water Immersion	BG9667, PH6.8-7.6, free chlorine 0.3-0.6mg/L
Salt Water Immersion	IEC60598-1, Salinity 4%
Salt Spray Test	IEC68-2-11
Outdoor Exposure	Manufacturer-defined
Flame Resistance	UL94
UV Exposure	ASTMG 154, ISO 4892-3, UVA @ 340nm
IPX5, IPX6, IPX7, IPX8	IEC60529
Temperature Shock	Manufacturer-defined, -40°C - 60°C (typical temperature range)
Constant Temperature	Manufacturer-defined

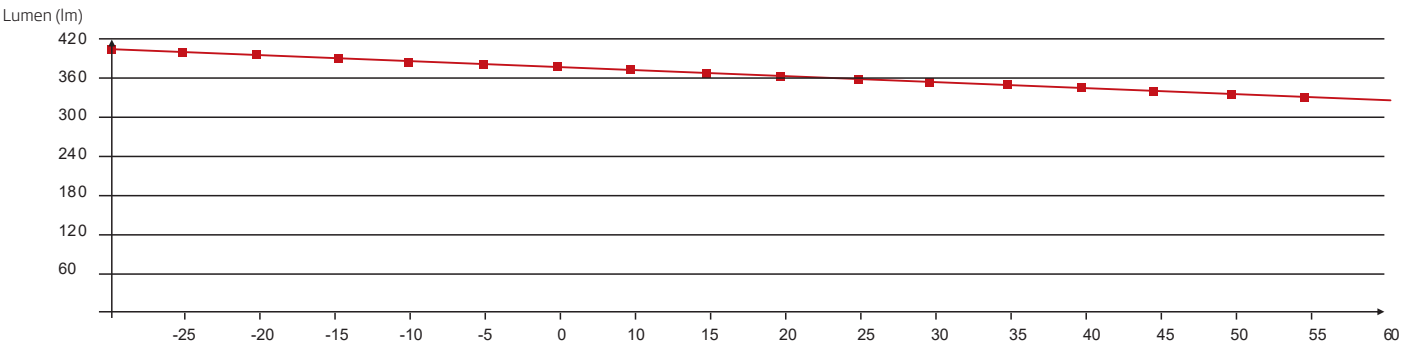
Charts



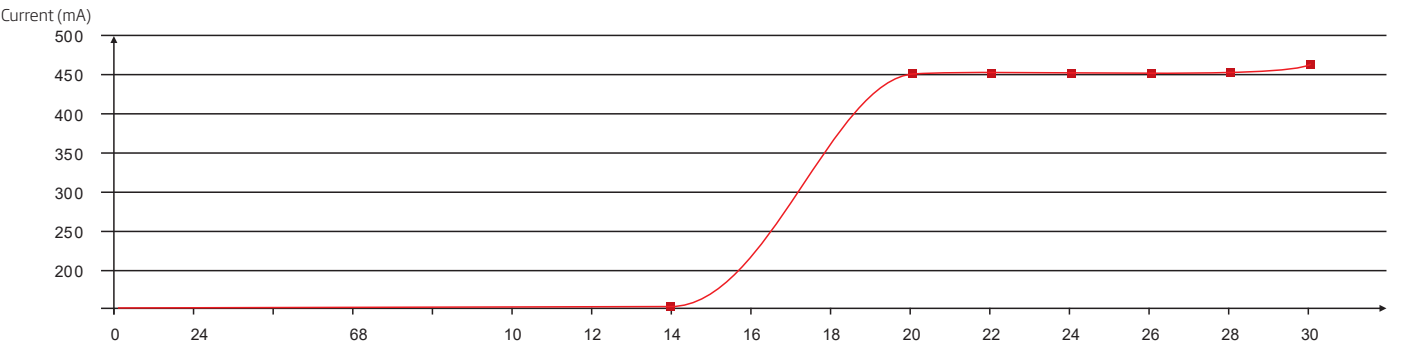
Working Temperature vs. Current



Luminous Flux vs. Length of Light



Luminous Flux vs. Working Temperature



Voltage vs. Current

Charts

ANSI STANDARD

Nominal CCT Categories

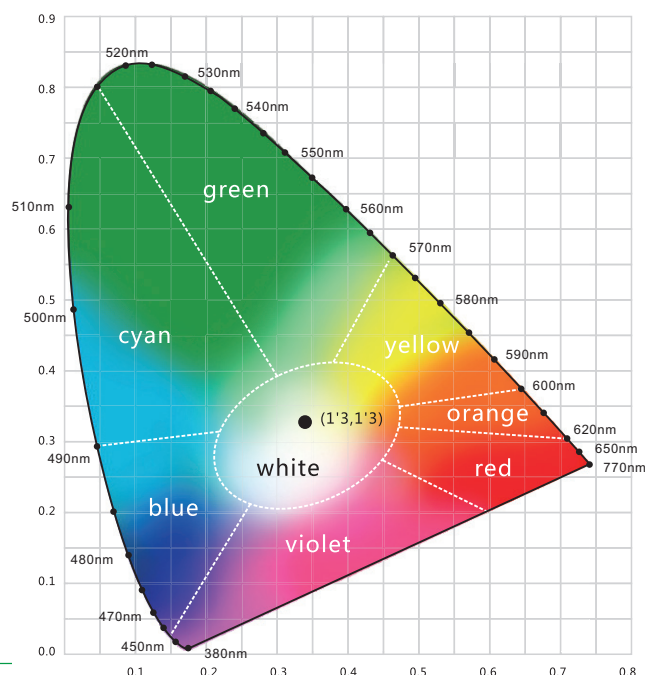
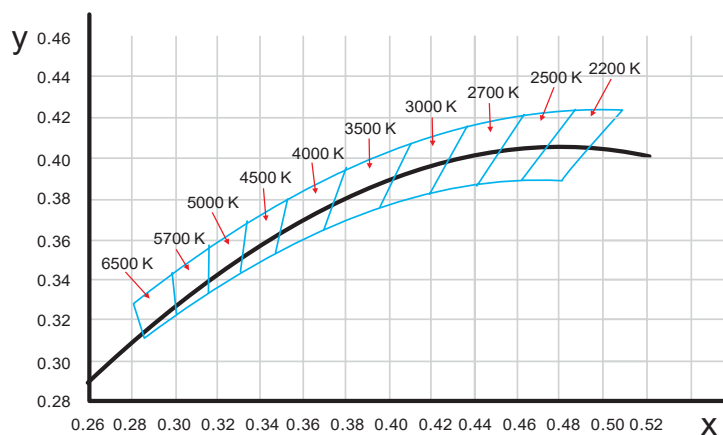
Nominal CCT	Target CCT and tolerance(K)	Target D_{uv}	D_{uv} Tolerance Range
2200K	2238 ±102	0.0000	Tx:CCT of the source
2500K	2460±120	0.0000	For Tx<2870K
2700K	2725 ±145	0.0000	0.000±0.0060
3000K	3045±175	0.0001	For Tx≥2870K
3500K	3465±245	0.0005	$D_{uv}(Tx) \pm 0.0060$
4000K	3985±275	0.0010	where
4500K	4503±243	0.0015	$D_{uv}(Tx) = 57700 \times (1/Tx)^2$
5000K	5029±283	0.0020	$-44.6 \times (1/Tx)$
5700K	5667±355	0.0025	$+0.00854$
6500K	6532±510	0.0031	

Flexible CCT (2200-6500K)	$T_F^{(1)} \pm \Delta T^{(2)}$	$D_{uv} T_F^{(3)}$
------------------------------	--------------------------------	--------------------

Remark:

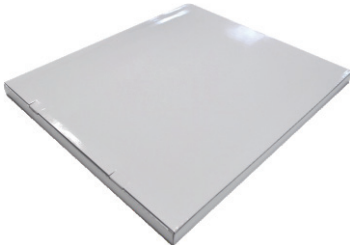
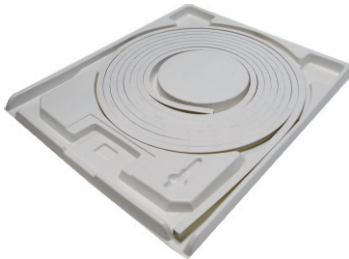
- 1) T_F is chosen to be at 100K steps (2300,2400,.....,6400K),excluding the ten nominal CCTs listed in Table 1.
- 2) $\Delta T = 1.1900 \times 10^5 \times T^3 - 1.5434 \times 10^4 \times T^2 + 0.7168 \times T - 902.55$
- 3) Same as in the D_{uv} Tolerance Range.

(X,Y) Chromaticity Diagram



Light Color





White Box

Packing Box

Fixture Length	White Box Dimensions		Packing Box Dimensions	# Of White Boxes	Package Weight
196.85in (5m)	15.35x2.05x19.67in (39x5.2x50cm)	20.47x15.34x11.02in (52x41x28cm)		5	30.86lbs (14kg)
393.7in (10m)	20.08x2.05x24.41in (51x5.2x62cm)	25.2x20.87x11.02in (64x53x28cm)		5	57.32lbs (26kg)
393.7in (10m)	20.08x2.05x24.41in (51x5.2x62cm)	25.2x20.87x6.9in (64x53x17.5cm)		3	35.27lbs (16kg)
787.4in (20m)	26.77x2.05x31.1in (68x5.2x79cm)	31.9x27.56x4.92in (81x70x12.5cm)		2	48.5lbs (22kg)