



VIVID

Contour

STATIC

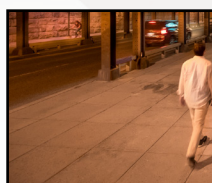
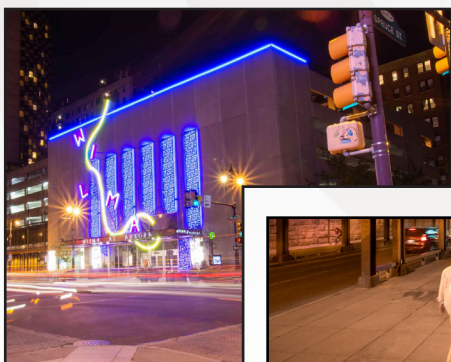
Silicone 24V



Version 6.0|04/15/2022

For More Information

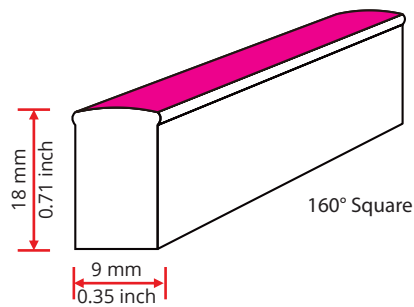
Toll Free: 1 (888) 580-6366



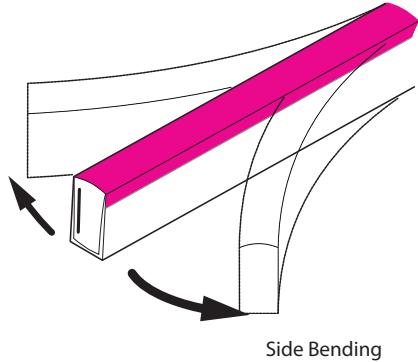
Light Dimension	0.35 x 0.71in (9 x 18mm)		
Output	Red/Amber	Green/Blue/White	
LED Light	SMD LED Chip		
Max Run Length			
Single Feed	98.43ft (30m)	98.43ft (30m)	
Double Feed	196.85ft (60m)	196.85ft (60m)	
Light Surface	Square Profile 160°		
Lumen Maintenance	70,000 Hours L70 @ 25°C : 90,000 L50 @ 25°C 50,000 Hours L70 @ 50°C : 70,000 Hours L50 @ 50°C		
Electrical			
Input Voltage	24V DC		
Power Consumption	1.07W/ft(3.5W/m)	1.37W(4.5W/m)	
Physical			
LED Count	22 LEDs/ft (72 LEDs/m)		
Cutting Unit Length	4.92in (125mm) (9LEDs)	3.28in (83.3mm) (6LEDs)	
Thermal Management	Free air convection		
Fixture Connections	End, side & bottom lead wires		
Minimum Bend Diameter	3.54in (90mm) (Side Bending)		
Temperature Ranges			
Installation	-40°F to 122°F (-40°C to 50°C)		
Operating	-40°F to 131°F (-40°C to 55°C)		
Max. Surface	185°F (85°C)		
Humidity	0-95% non condensing		
Dependability			
Warranty	10 Year Limited Warranty		
Safety			
Testing	Tested to UL & CSA by Underwriters Laboratory for use in USA and Canada, complies with California Title 24 Requirements, Lighting Facts. Exceeds ANSI C78.377A, CE & RoHS Compliant.		
Certifications	Testing Organization	Certificate Serial N°	Report Reference
UL 2108	UL	E347880	E347880-20130503
CE-EMC	SGS	SZEM1712012372LMV	SZEM171201237201
IP Rating	IP68 With appropriately rated accessories.		

Optical Parameters			
Available Colors		Lumen Count	Side Bending
Color	Wavelength/CCT	Color	Per Foot Per Meter
Red	618-624nm	Red	15lm 50lm
Green	522-528nm	Green	40lm 130lm
Blue	468-474nm	Blue	8lm 25lm
Amber	588-594nm	Amber	15lm 50lm
%	2238 ± 102K	2200K	34lm 110lm
2700K	2725 ± 145K	2700K	40lm 130lm
30 %	3045 ± 175K	3000K	40lm 130lm
3500K	3465 ± 245K	3500K	40lm 130lm
40 %	3985 ± 275K	4000K	40lm 130lm
57 %	5669 ± 355K	5700K	40lm 130lm

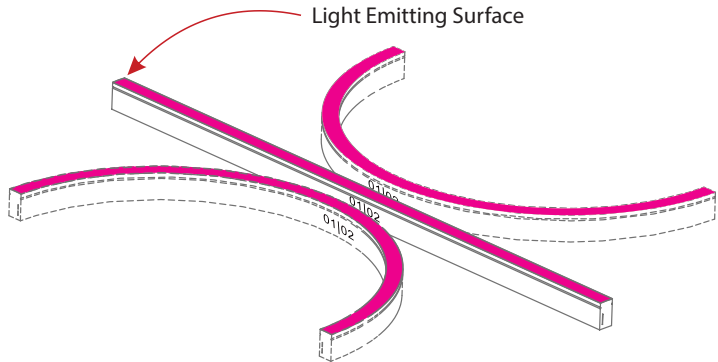
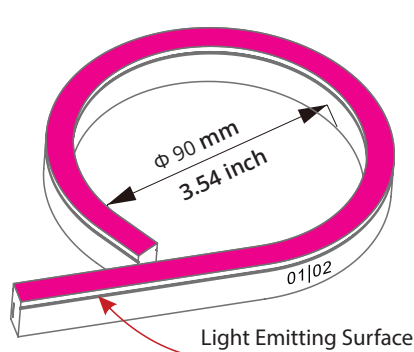
Light Profile



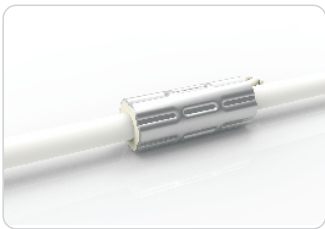
Bending Direction



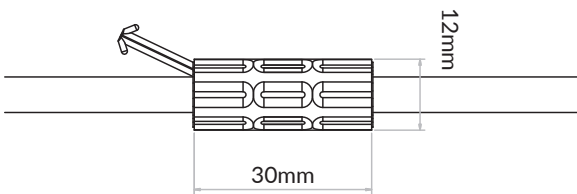
Minimum Bending Diameter



Lead Wire Accessories



Anti-wicking Ferrule

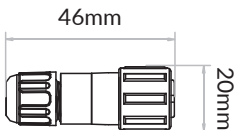


Cable Connectors

NA-XX-BC-DC-CXX-F
NA-XX-BC-DC-CXX-M

NA-XX-BN-XXA-CXX-F
NA-XX-BN-XXA-CXX-M

NA-XX-PL-XXA-CXX-F
NA-XX-PL-XXA-CXX-M



Fixtures

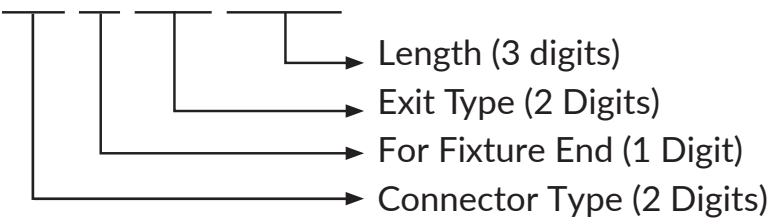
SF-09A-1- 01-2W-E-XXX-24DV



LED Color (3 digits)	
RED - Red	27K - 2700K
GRE - Green	30K - 3000K
BLU - Blue	35K - 3500K
AMB - Amber	40K - 4000K
22K - 2200K	57K - 5700K

Lead Connector

FA-09A-1-01-2W-XX-X-XX-XXX-P

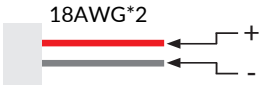


Connector Type	Fixture End	Exit Type	Length
SC - Snap	1 - Input side	EN - End	0M3 - 0.98ft (30cm)
SV - Swivel	2 - Output side	BO - Bottom	01M - 3.28ft (1m)
SE - Seamless	0 - Jumpers/ Seamless Bottom/ Seamless End	SL - Side left	03M - 9.84ft (3m)
SU - Submersible		SR - Side right	05M - 16ft (5m)
		EJ - End jumper	10M - 32.81ft (10m)
		BJ - Bottom jumper	000 - For End Cap
		SJ - Side jumper	



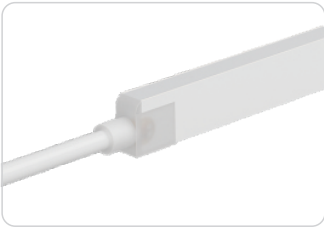
For full part number naming rules, please refer to the document on <https://www.glls.com/documentation/>

IP68: Wet Locations. Factory Assembly only.

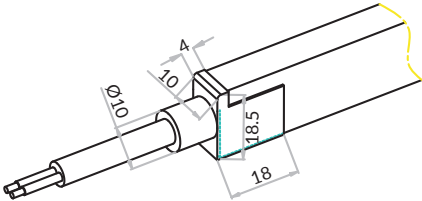


(Dimensions: mm)

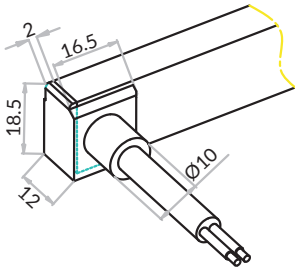
Seamless



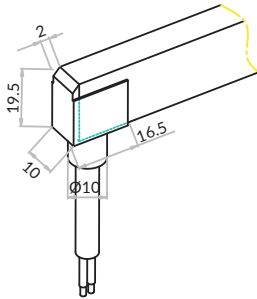
Seamless End Exit
FA-09A-1-01-2W-SE-0-EN-XXX-P



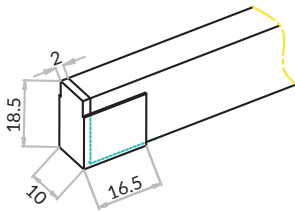
Seamless Side Exit
FA-09A-1-01-2W-SE-1-SR-XXX-P
FA-09A-1-01-2W-SE-2-SL-XXX-P



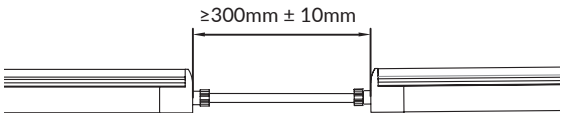
Seamless Bottom Exit
FA-09A-1-01-2W-SE-0-BO-XXX-P



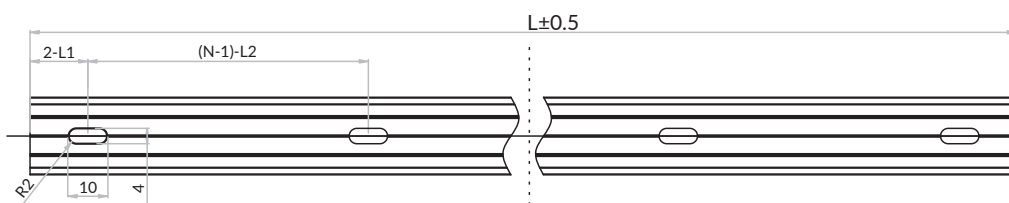
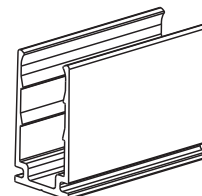
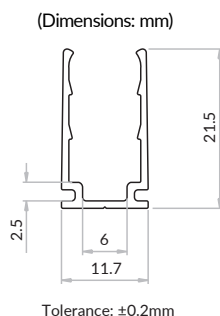
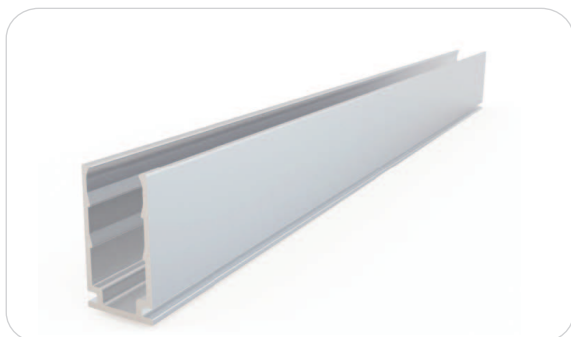
Seamless End Cap
FA-09A-1-01-0W-SE-1-EC-000-P
FA-09A-1-01-0W-SE-2-EC-000-P



Seamless Jumper
FA-09A-1-01-2W-SE-0-EJ-XXX-P



Standard Aluminum Channel

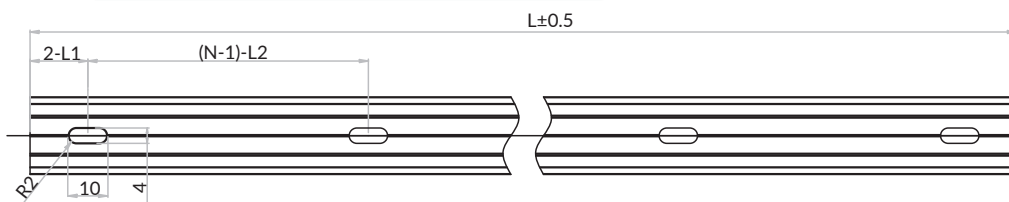
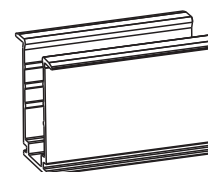
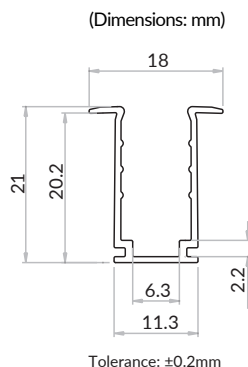
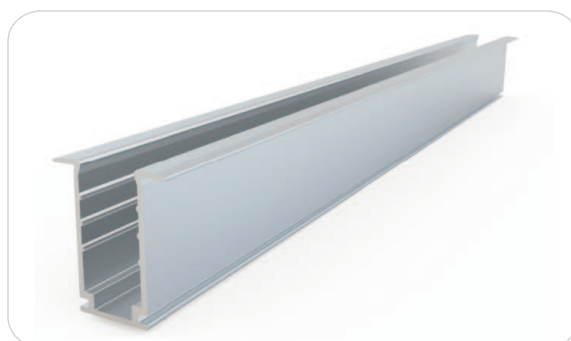


Note

1. 2-L1 refers to two of symmetric L1 in each piece of profile.
2. (N-1)-L2 refers to (N minus one) of symmetric L2 in each piece of profile. "N" hereby stands for its corresponding "Hole Number" in the below table

W x H	Standard Length	Part Number	L1	L2	Screw Hole	Hole #
0.46 x 0.85in (11.7 x 21.5mm)	1.38in (35mm)	CL-09-R-AL-3C5-SD	0.69in (17.5mm)	/	0.39x0.16in(10x4mm)	1
	19.69in (500mm)	CH-09-R-AL-0M5-SD	1.97in (50mm)	7.87in (200mm)	0.39x0.16in(10x4mm)	3
	39.37in (1000mm)	CH-09-R-AL-01M-SD	3.94in (100mm)	7.87in (200mm)	0.39x0.16in(10x4mm)	5
	78.74in (2000mm)	CH-09-R-AL-02M-SD	3.94in (100mm)	7.87in (200mm)	0.39x0.16in(10x4mm)	10

Recessed Aluminum Channel



Note:

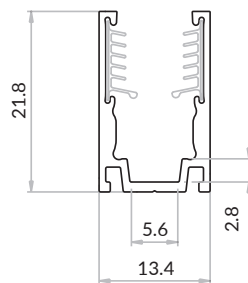
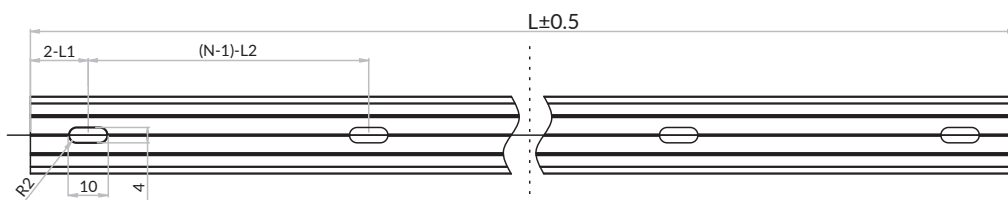
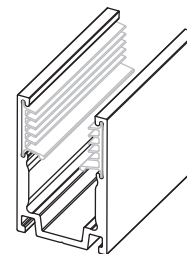
1. 2-L1 refers to two of symmetric L1 in each piece of profile.
2. (N-1)-L2 refers to (N minus one) of symmetric L2 in each piece of profile. "N" hereby stands for its corresponding "Hole Number" in the below table

W x H	Standard Length	Part Number	L1	L2	Screw Hole	Hole #
0.71 x 0.83in (18 x 21mm)	1.38in (35mm)	CL-09-R-RA-3C5-SD	0.69in (17.5mm)	/	0.39x0.16in(10x4mm)	1
	19.69in (500mm)	CH-09-R-RA-0M5-SD	1.97in (50mm)	7.87in (200mm)	0.39x0.16in(10x4mm)	3
	39.37in (1000mm)	CH-09-R-RA-01M-SD	3.94in (100mm)	7.87in (200mm)	0.39x0.16in(10x4mm)	5
	78.74in (2000mm)	CH-09-R-RA-02M-SD	3.94in (100mm)	7.87in (200mm)	0.39x0.16in(10x4mm)	10

Standard Aluminum Channel with Silicone Grip



(Dimensions: mm)

Tolerance: $\pm 0.2\text{mm}$ 

Note:

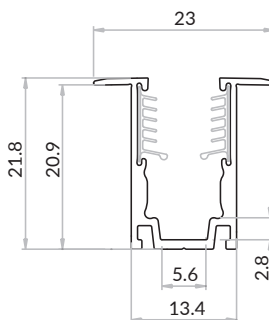
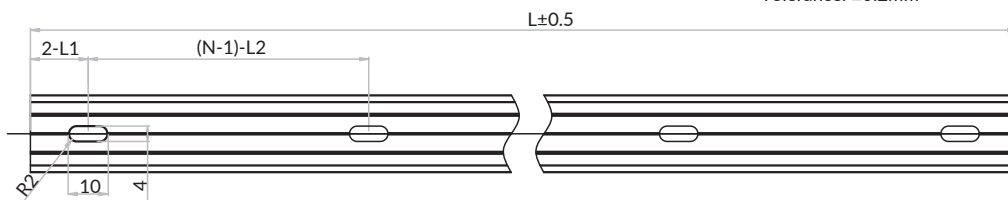
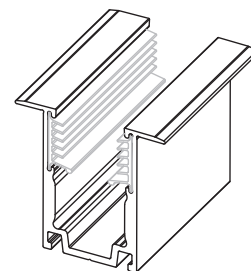
1. 2-L1 refers to two of symmetric L1 in each piece of profile.
2. (N-1)-L2 refers to (N minus one) of symmetric L2 in each piece of profile. "N" hereby stands for its corresponding "Hole Number" in the below table

W x H	Standard Length	Part Number	L1	L2	Screw Hole	Hole #
0.53 x 0.86in (13.4 x 21.8mm)	0.787in (20mm)	CL-09-R-AL-02C-SE	0.39in (10mm)	/	0.39x0.16in(10x4mm)	1
	19.69in (500mm)	CH-09-R-AL-0M5-SE	1.97in (50mm)	7.87in (200mm)	0.39x0.16in(10x4mm)	3
	39.37in (1000mm)	CH-09-R-AL-01M-SE	3.94in (100mm)	7.87in (200mm)	0.39x0.16in(10x4mm)	5
	78.74in (2000mm)	CH-09-R-AL-02M-SE	3.94in (100mm)	7.87in (200mm)	0.39x0.16in(10x4mm)	10

Recessed Aluminum Channel with Silicone Grip



(Dimensions: mm)

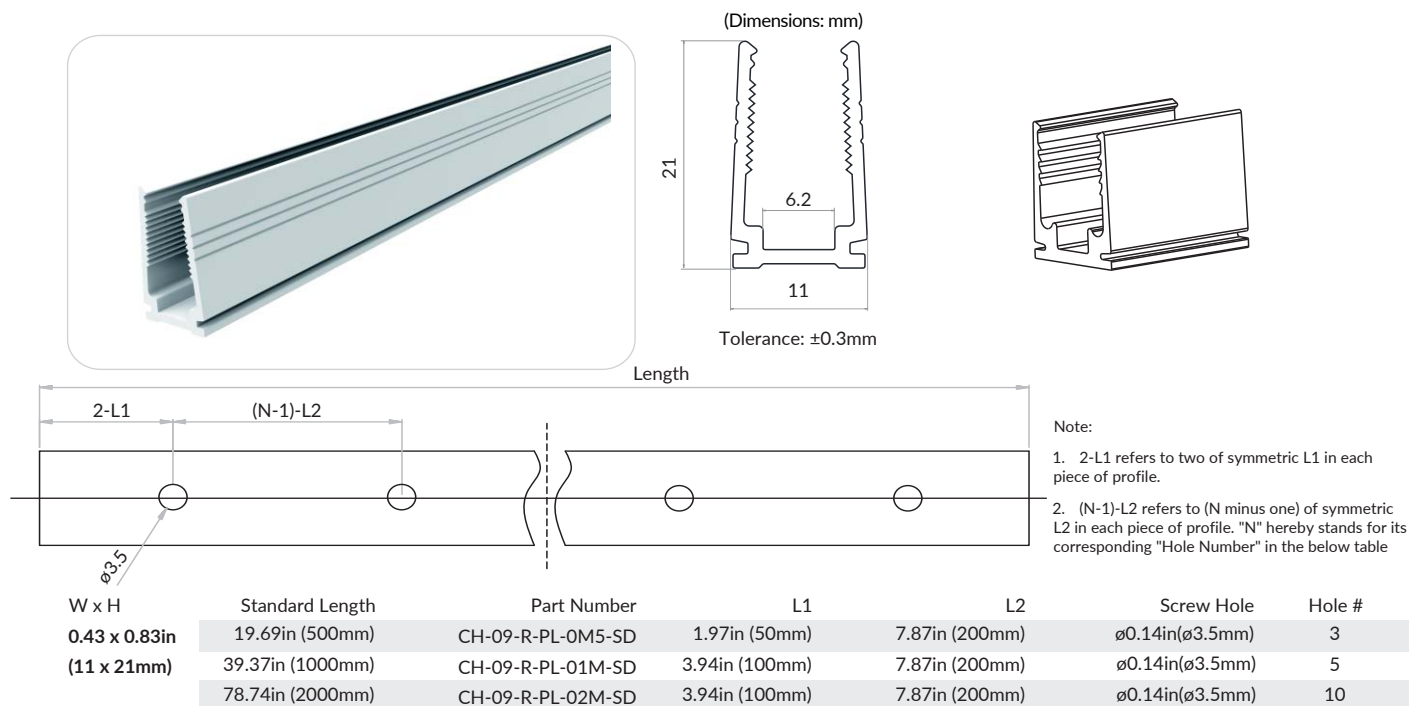
Tolerance: $\pm 0.2\text{mm}$ 

Note:

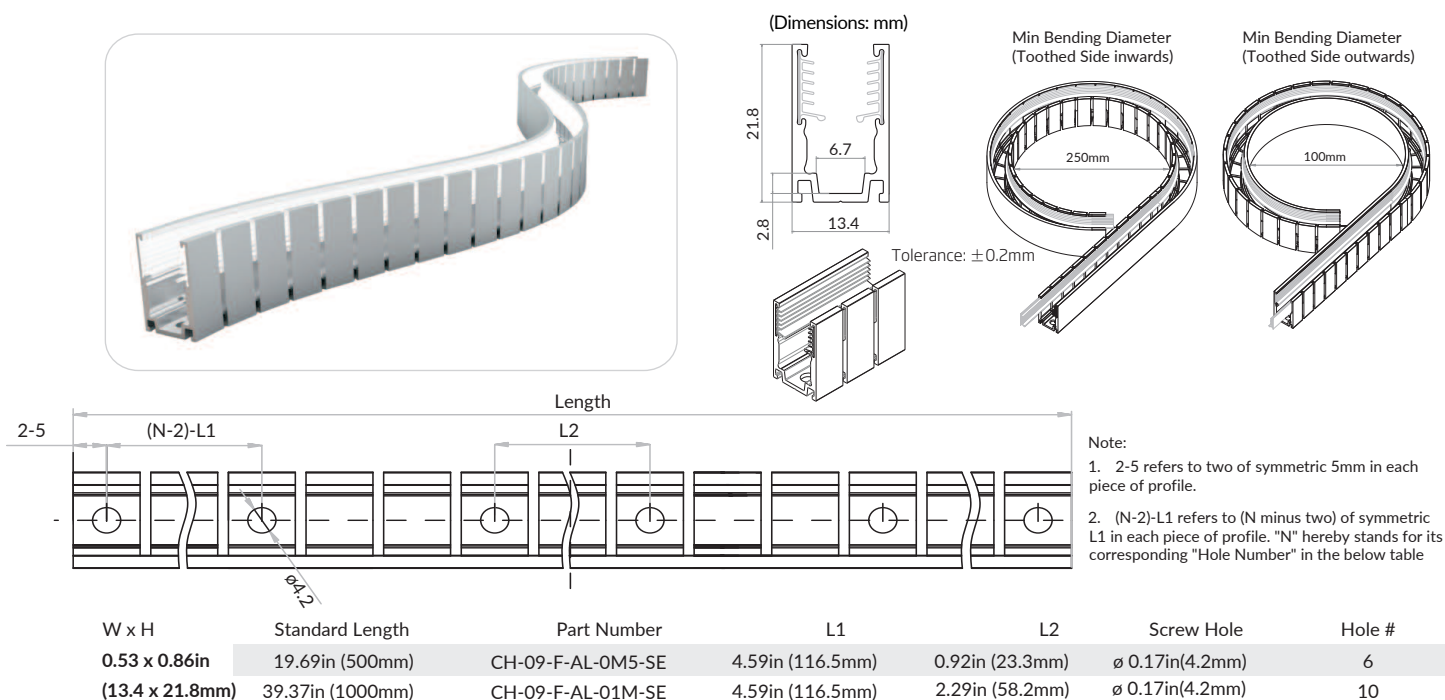
1. 2-L1 refers to two of symmetric L1 in each piece of profile.
2. (N-1)-L2 refers to (N minus one) of symmetric L2 in each piece of profile. "N" hereby stands for its corresponding "Hole Number" in the below table

W x H	Standard Length	Part Number	L1	L2	Screw Hole	Hole #
0.53 x 0.91in (13.4 x 23mm)	0.787in (20mm)	CL-09-R-RA-02C-SE	0.39in (10mm)	/	0.39x0.16in(10x4mm)	1
	19.69in (500mm)	CH-09-R-RA-0M5-SE	1.97in (50mm)	7.87in (200mm)	0.39x0.16in(10x4mm)	3
	39.37in (1000mm)	CH-09-R-RA-01M-SE	3.94in (100mm)	7.87in (200mm)	0.39x0.16in(10x4mm)	5
	78.74in (2000mm)	CH-09-R-RA-02M-SE	3.94in (100mm)	7.87in (200mm)	0.39x0.16in(10x4mm)	10

Plastic Channel



Bendable Serrated Aluminum Channel



For more available mounting options, please refer to the series manual on <https://www.glls.com/documentation/>