



VIVID

Contour

STATIC

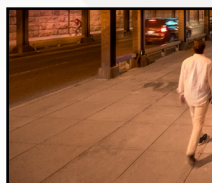
PVC 12V



Version 6.1 | 04/15/2022

For More Information

Toll Free: 1 (888) 580-6366



Light Dimension	0.35 x 0.71in (9 x 18mm)
Output	Red/Green/Blue/Amber/White
LED Light	SMD LED Chip
Max Run Length	
Single Feed	24.6ft (7.5m)
Double Feed	49.2ft (15m)
Light Surface	Square Profile 160°
Lumen Maintenance	70,000 Hours L70 @ 25°C : 90,000 L50 @ 25°C 50,000 Hours L70 @ 50°C : 70,000 Hours L50 @ 50°C

Electrical

Input Voltage	12V DC
Power Consumption	1.37W/ft (4.5W/m)

Physical

LED Count	22 LEDs/ft (72 LEDs/m)
Cutting Unit Length	1.64in (41.7mm) (3 LEDs)
Thermal Management	Free air convection
Fixture Connections	End, side & bottom lead wires
Minimum Bend Diameter	3.54in (90mm) (Side Bending)

Temperature Ranges

Installation	32°F to 113°F (0°C to 45°C)
Operating	-4°F to 113°F (-20°C to 45°C)
Max. Surface	140°F (60°C)
Humidity	0-95% non condensing

Dependability

Warranty	5 Year Limited Warranty
----------	-------------------------

Safety

Testing	Tested to UL & CSA by Underwriters Laboratory for use in USA and Canada, complies with California Title 24 Requirements, Lighting Facts. Exceeds ANSI C78.377A, CE & RoHS Compliant.
---------	---

Certifications	Testing Organization	Certificate Serial N°	Report Reference
UL 2108	UL	E347880	E347880-20130503
CE-EMC	SGS	SZEM1712012372LMV	SZEM171201237201
IP Rating	IP68 With appropriately rated accessories.		

Optical Parameters

Available Colors

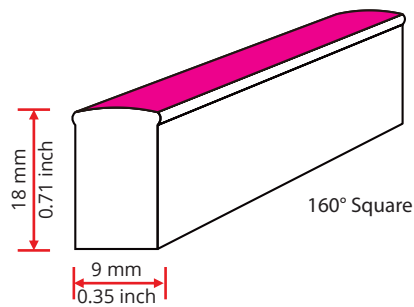
Color	Wavelength/CCT
Red	618-624nm
Green	522-528nm
Blue	468-474nm
Amber	588-594nm
%	2238 ± 102K
2700K	2725 ± 145K
30 %	3045 ± 175K
3500K	3465 ± 245K
40 %	3985 ± 275K
57 %	5669 ± 355K

Lumen Count

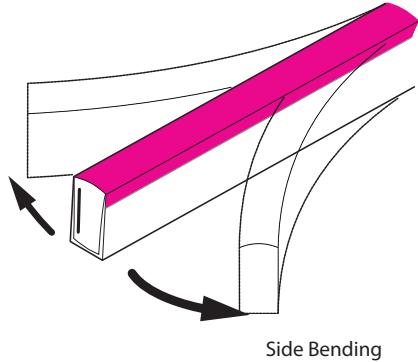
Color	Per Foot	Per Meter
Red	14lm	45lm
Green	24lm	80lm
Blue	5lm	15lm
Amber	15lm	50lm
2200K	34lm	110lm
2700K	34lm	110lm
3000K	37lm	120lm
3500K	37lm	120lm
4000K	37lm	120lm
5700K	34lm	110lm

Side Bending

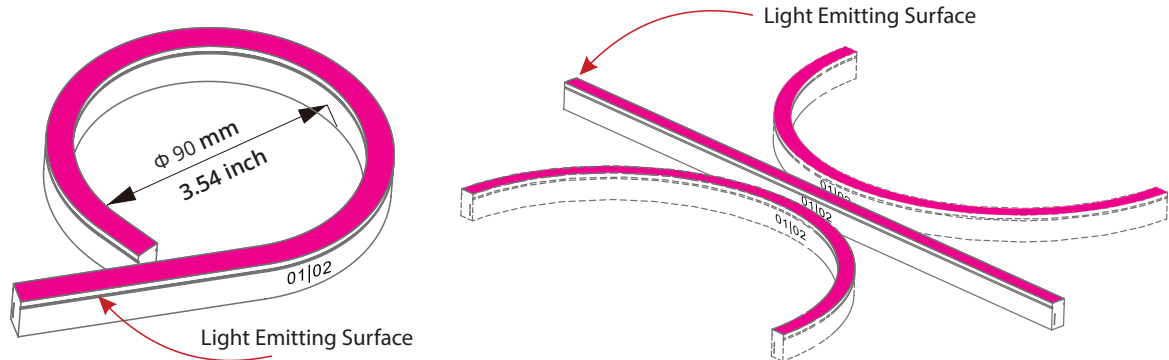
Light Profile



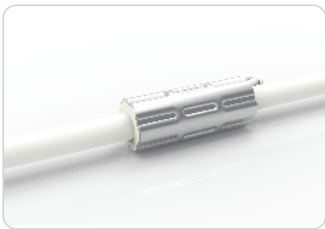
Bending Direction



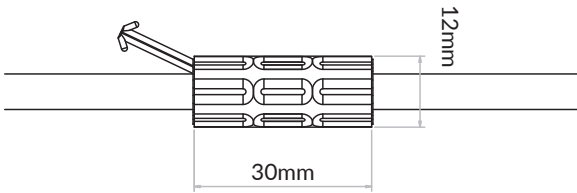
Minimum Bending Diameter



Lead Wire Accessories



Anti-wicking Ferrule

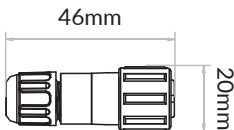


Cable Connectors

NA-XX-BC-DC-CXX-F
NA-XX-BC-DC-CXX-M

NA-XX-BN-XXA-CXX-F
NA-XX-BN-XXA-CXX-M

NA-XX-PL-XXA-CXX-F
NA-XX-PL-XXA-CXX-M



Fixtures

NF-09A-1- 01-2W-E-**XXX**-12DV

LED Color (3 digits)

LED Color (3 digits)	
RED - Red	27K - 2700K
GRE - Green	30K - 3000K
BLU - Blue	35K - 3500K
AMB - Amber	40K - 4000K
22K - 2200K	57K - 5700K

Lead Connector

NA-09A-1-01-2W-**XX-X-XX-XXX**-P

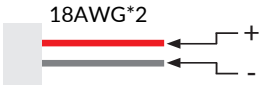
Length (3 digits)
Exit Type (2 Digits)
For Fixture End (1 Digit)
Connector Type (2 Digits)

Connector Type	Fixture End	Exit Type	Length
SC - Snap	1 - Input side	EN - End	0M3 - 0.98ft (30cm)
SV - Swivel	2 - Output side	BO - Bottom	01M - 3.28ft (1m)
SE - Seamless	0 - Jumpers/ Seamless Bottom/ Seamless End	SL - Side left	03M - 9.84ft (3m)
SU - Submersible		SR - Side right	05M - 16ft (5m)
		EJ - End jumper	10M - 32.81ft (10m)
		BJ - Bottom jumper	000 - For End Cap
		SJ - Side jumper	



For full part number naming rules, please refer to the document on <https://www.glls.com/documentation/>

IP67: Wet Locations. Factory Assembly only.

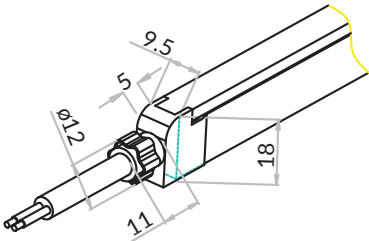


(Dimensions: mm)

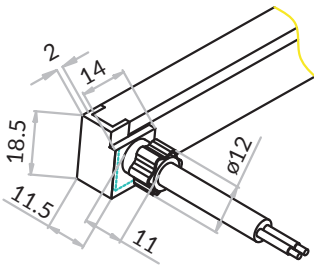
Seamless



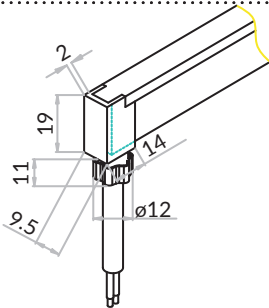
Seamless End Exit
NA-09A-1-01-2W-SE-0-EN-XXX-P



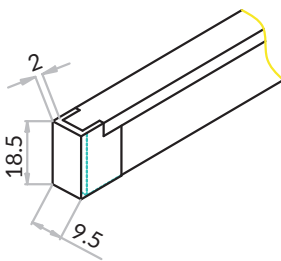
Seamless Side Exit
NA-09A-1-01-2W-SE-1-SR-XXX-P
NA-09A-1-01-2W-SE-2-SL-XXX-P



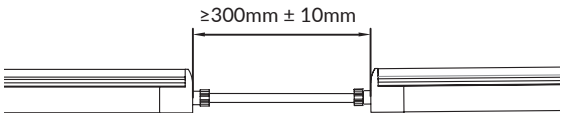
Seamless Bottom Exit
NA-09A-1-01-2W-SE-0-BO-XXX-P



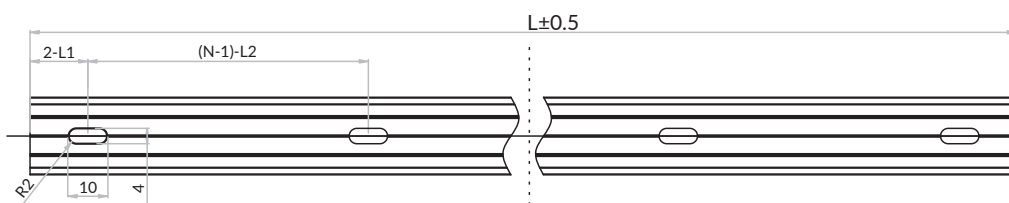
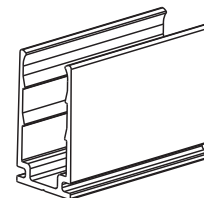
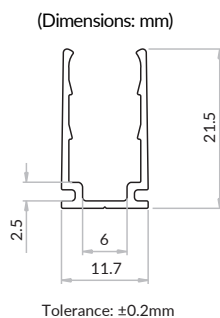
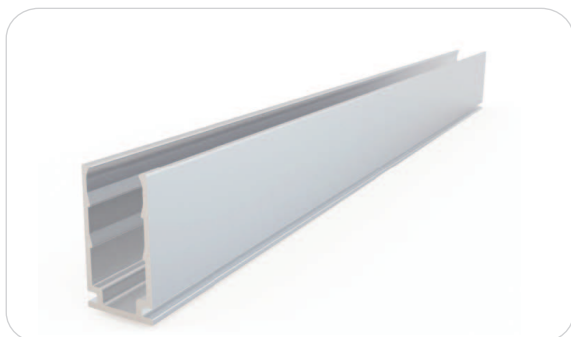
Seamless End Cap
NA-09A-1-01-0W-SE-1-EC-000-P
NA-09A-1-01-0W-SE-2-EC-000-P



Seamless Jumper
NA-09A-1-01-2W-SE-0-EJ-XXX-P



Standard Aluminum Channel

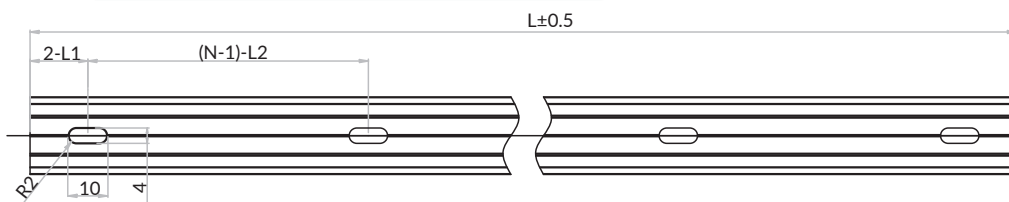
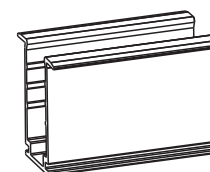
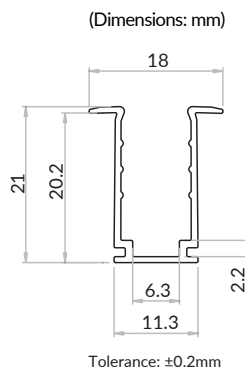
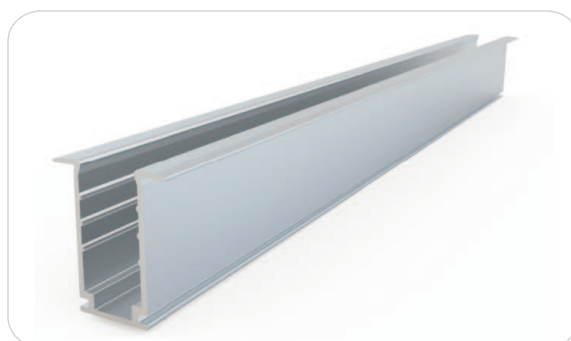


Note

1. 2-L1 refers to two of symmetric L1 in each piece of profile.
2. (N-1)-L2 refers to (N minus one) of symmetric L2 in each piece of profile. "N" hereby stands for its corresponding "Hole Number" in the below table

W x H	Standard Length	Part Number	L1	L2	Screw Hole	Hole #
0.46 x 0.85in (11.7 x 21.5mm)	1.38in (35mm)	CL-09-R-AL-3C5-SD	0.69in (17.5mm)	/	0.39x0.16in(10x4mm)	1
	19.69in (500mm)	CH-09-R-AL-0M5-SD	1.97in (50mm)	7.87in (200mm)	0.39x0.16in(10x4mm)	3
	39.37in (1000mm)	CH-09-R-AL-01M-SD	3.94in (100mm)	7.87in (200mm)	0.39x0.16in(10x4mm)	5
	78.74in (2000mm)	CH-09-R-AL-02M-SD	3.94in (100mm)	7.87in (200mm)	0.39x0.16in(10x4mm)	10

Recessed Aluminum Channel

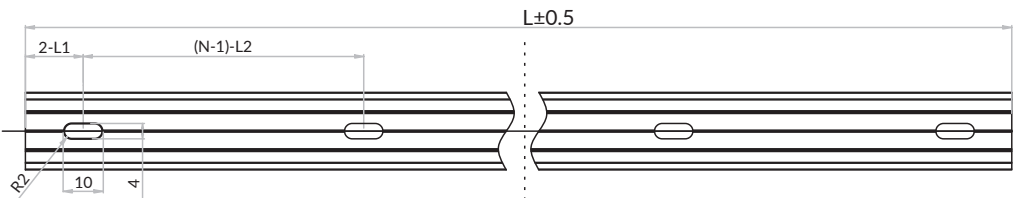
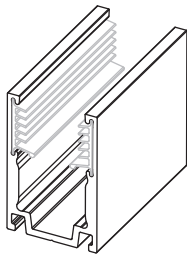
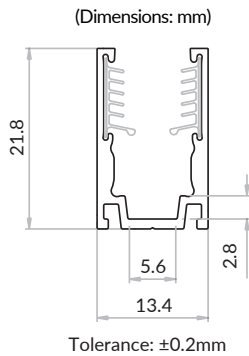


Note:

1. 2-L1 refers to two of symmetric L1 in each piece of profile.
2. (N-1)-L2 refers to (N minus one) of symmetric L2 in each piece of profile. "N" hereby stands for its corresponding "Hole Number" in the below table

W x H	Standard Length	Part Number	L1	L2	Screw Hole	Hole #
0.71 x 0.83in (18 x 21mm)	1.38in (35mm)	CL-09-R-RA-3C5-SD	0.69in (17.5mm)	/	0.39x0.16in(10x4mm)	1
	19.69in (500mm)	CH-09-R-RA-0M5-SD	1.97in (50mm)	7.87in (200mm)	0.39x0.16in(10x4mm)	3
	39.37in (1000mm)	CH-09-R-RA-01M-SD	3.94in (100mm)	7.87in (200mm)	0.39x0.16in(10x4mm)	5
	78.74in (2000mm)	CH-09-R-RA-02M-SD	3.94in (100mm)	7.87in (200mm)	0.39x0.16in(10x4mm)	10

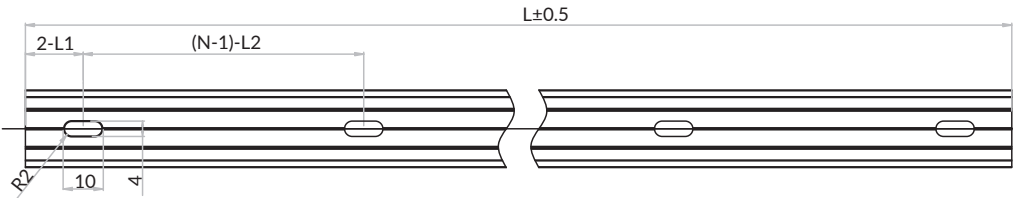
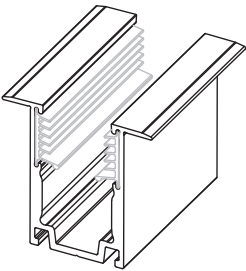
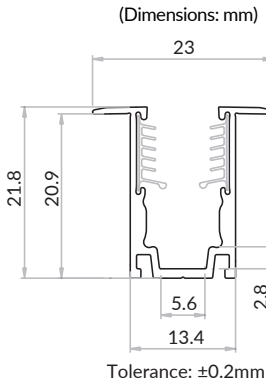
Standard Aluminum Channel with Silicone Grip



- Note:
- 2-L1 refers to two of symmetric L1 in each piece of profile.
 - (N-1)-L2 refers to (N minus one) of symmetric L2 in each piece of profile. "N" hereby stands for its corresponding "Hole Number" in the below table

W x H	Standard Length	Part Number	L1	L2	Screw Hole	Hole #
0.53 x 0.86in (13.4 x 21.8mm)	0.787in (20mm)	CL-09-R-AL-02C-SE	0.39in (10mm)	/	0.39x0.16in(10x4mm)	1
	19.69in (500mm)	CH-09-R-AL-0M5-SE	1.97in (50mm)	7.87in (200mm)	0.39x0.16in(10x4mm)	3
	39.37in (1000mm)	CH-09-R-AL-01M-SE	3.94in (100mm)	7.87in (200mm)	0.39x0.16in(10x4mm)	5
	78.74in (2000mm)	CH-09-R-AL-02M-SE	3.94in (100mm)	7.87in (200mm)	0.39x0.16in(10x4mm)	10

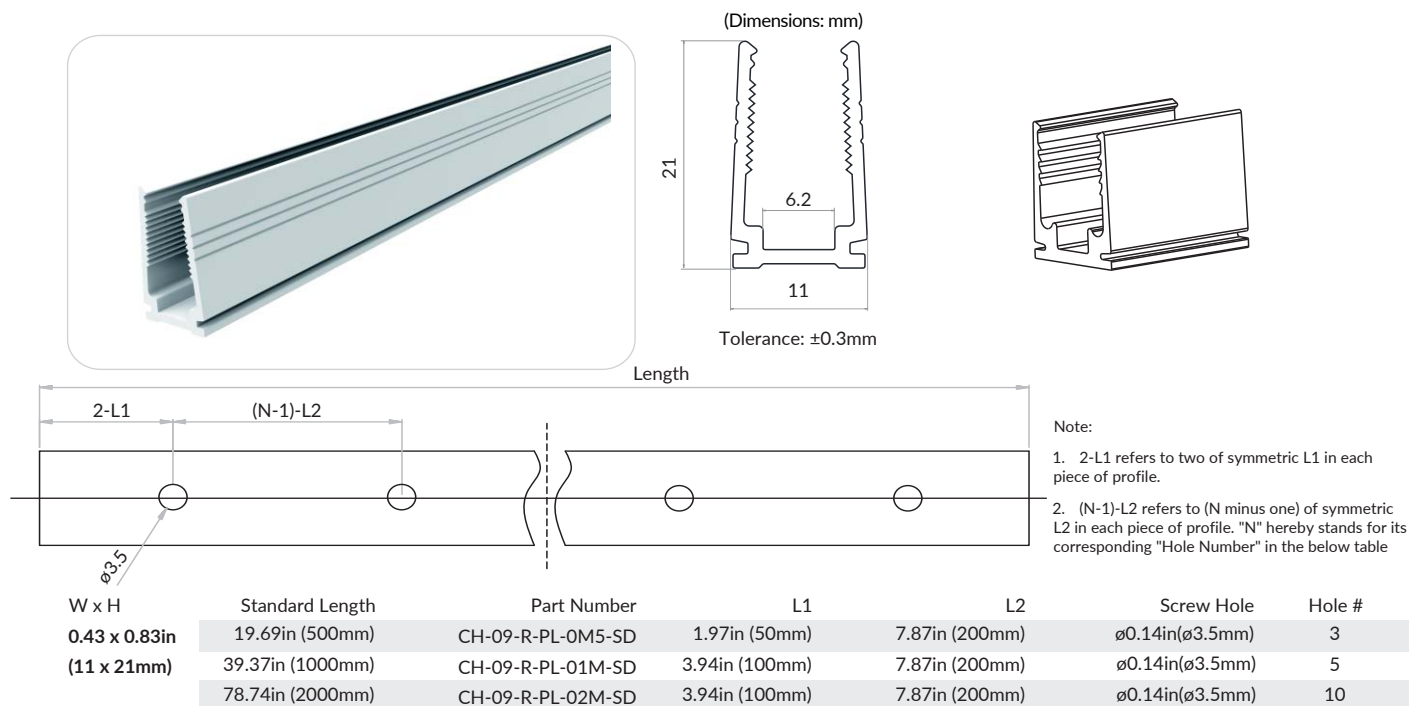
Recessed Aluminum Channel with Silicone Grip



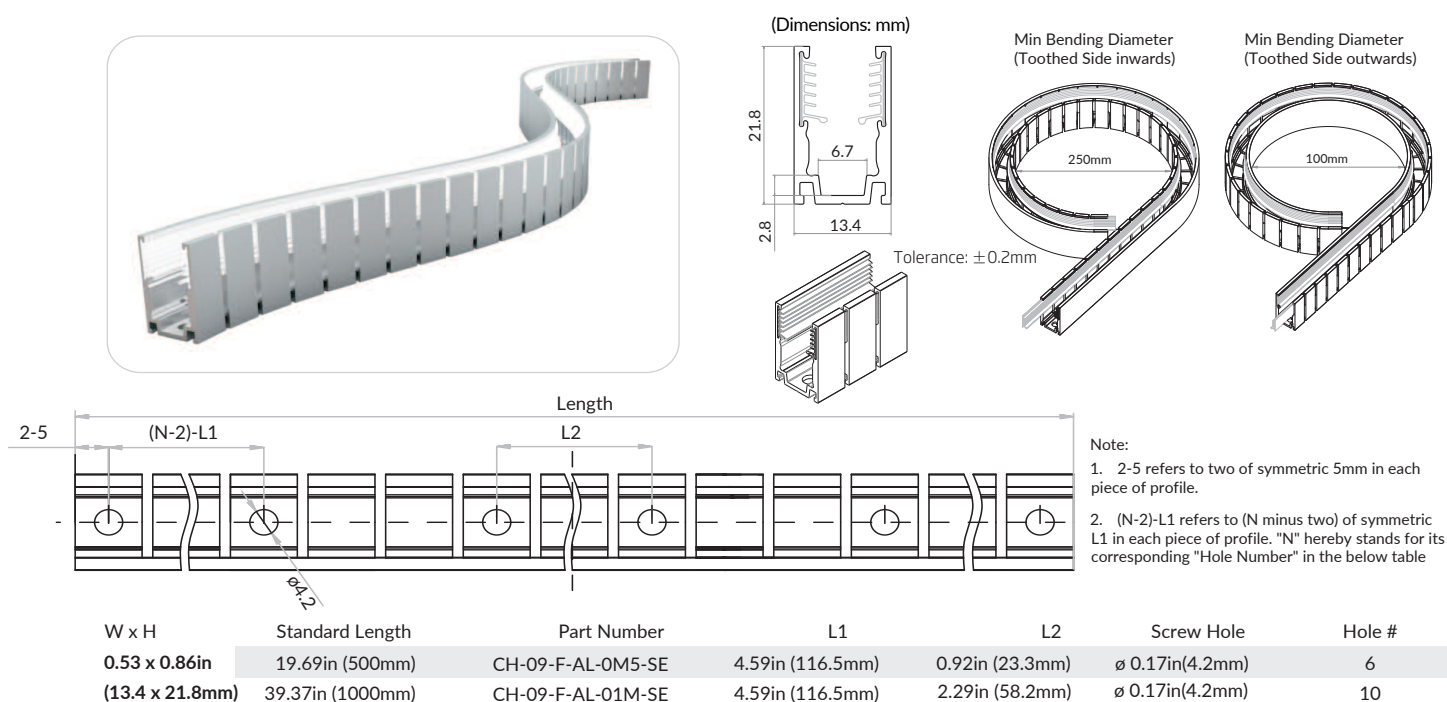
- Note:
- 2-L1 refers to two of symmetric L1 in each piece of profile.
 - (N-1)-L2 refers to (N minus one) of symmetric L2 in each piece of profile. "N" hereby stands for its corresponding "Hole Number" in the below table

W x H	Standard Length	Part Number	L1	L2	Screw Hole	Hole #
0.53 x 0.91in (13.4 x 23mm)	0.787in (20mm)	CL-09-R-RA-02C-SE	0.39in (10mm)	/	0.39x0.16in(10x4mm)	1
	19.69in (500mm)	CH-09-R-RA-0M5-SE	1.97in (50mm)	7.87in (200mm)	0.39x0.16in(10x4mm)	3
	39.37in (1000mm)	CH-09-R-RA-01M-SE	3.94in (100mm)	7.87in (200mm)	0.39x0.16in(10x4mm)	5
	78.74in (2000mm)	CH-09-R-RA-02M-SE	3.94in (100mm)	7.87in (200mm)	0.39x0.16in(10x4mm)	10

Plastic Channel



Bendable Serrated Aluminum Channel



For more available mounting options, please refer to the series manual on <https://www.glls.com/documentation/>