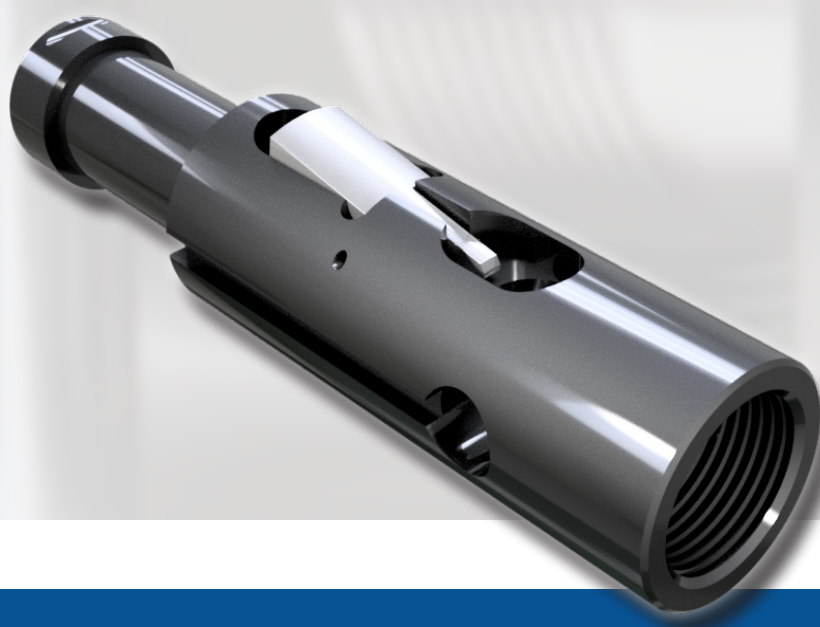




# BRACE TOOL

OILFIELD, WIRELINE & DOWNHOLE TOOLS

## Z Lock Mandrel



Scan for more  
information



### Purpose

The Z Lock Mandrel is designed to secure subsurface controls within BR Profile Nipples. Crafted with an external fishing neck, this mandrel features a robust assembly comprising a Lock Mandrel, two Locks, and Lock Springs. Its seamless integration with subsurface control accessories ensures reliable functionality within the specified seating nipple.

Two upward facing locks stop upward movement of assembly. Downward travel is stopped by the packing mandrel landing on the No-Go of the BR Profile Nipple.

### Application:

- Locking subsurface controls within BR Profile Nipples.

### Key Features & Benefits:

- Two locks placed to prevent unwanted upward movement
- Designed to work seamlessly with a "C-1" running tool for deployment and "JUC" or "JDC" pulling tool for removal.
- Available in various material configurations.

Technical Data - Z Lock Mandrel					
Nominal Size	2.00"	2.50"	2.56"	2.75" - 2.81"	4.00"
Assembly Number	08-03-Z-200-A0	08-03-Z-250-A0	08-03-Z-256-A0	08-03-Z-300-A0	08-03-Z-368-01
Fishneck Size	1.375"	1.75"	2.313"	2.313"	3.125"
Maximum O.D.	1.75"	2.18"	2.5"	2.685"	3.562"
Pulling Probe	07-03-B-200-01	07-03-B-250-01	07-03-B-256-01	07-03-B-300-01	07-03-B-400-01

1.900 and 2.062 sizes and TS lock dogs available upon request. Speak with a Brace Tool sales representative to explore the different configurations available on this tool and discover how we can match your requirements.



[www.bracetool.com](http://www.bracetool.com) || Toll-Free: 1-800-438-0061.