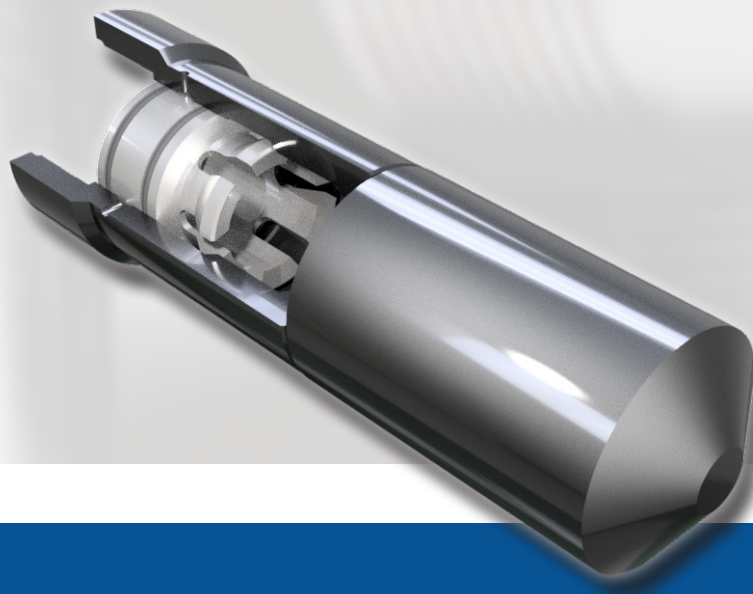




BRACE TOOL

OILFIELD, WIRELINE & DOWNHOLE TOOLS

R Equalizing Assembly



Scan for more
information



Purpose

The R Equalizing Assembly is designed to attach to R/ RN Locks to create a method of containing and equalizing pressure in a wellbore. It provides a single run to set and single run to pull plugging system for R/RN locks landed in a nipple.

The R Equalizing Assembly goes beyond its primary function as a plugging system. Its adaptability extends to applications such as electronic shut-in tools and check valves.

Application:

- Plugging systems where it facilitates a single run to set and another run to pull.
- Able to be opened and closed many times to hold pressure and stop flow to suspend production or perform maintenance on a well bore or BOP.

Key Features & Benefits:

- Reduced complexity in the plugging process.
- Adaptable to other functions.
- Available in multiple sizes.

Technical Data			
Nominal Size	Assembly Number	Top Thread Connection	Max O.D.
1.71"	09-02-R-171-A0	1.125-16 UN 2B	1.705"
1.78"	09-02-R-178-A0	1.375-14 UN 2B	1.770"
2.12"	09-02-R-212-A0	1.375-14 UN 2B	2.120"
2.18"	09-02-R-218-A0	1.705-12 UN 2B	2.173"
2.56"	09-02-R-256-A0	2.00-12 SLB 2G	2.555"

Speak with a Brace Tool sales representative to explore the different configurations available on this tool and discover how we can match your requirements.



www.bracetool.com || Toll-Free: 1-800-438-0061.