

MaCo[®] GUIDE



GUIDED
SURGERY
SOLUTIONS



IMPLANT PLANNING SOFTWARE3D



MaCo 3D

MaCo 3D is a software that allows you to perform three-dimensional implant simulation directly on your personal computer. It simulates the position of the implants on two-dimensional and three-dimensional models, identifies the mandibular canal, traces panoramics and sections of the bone model and visualizes the three-dimensional bone model with the ability to calculate bone density. Using MaCo 3D, the dentist can plan implant-prosthetic surgery more safely, efficiently and quickly





IN HOUSE SURGICAL GUIDE CREATION

MaCoGUIDE

MaCoGuide is a module of the MaCo 3D software that allows the design of guides for performing implant-prosthetic intervention in guided surgery.

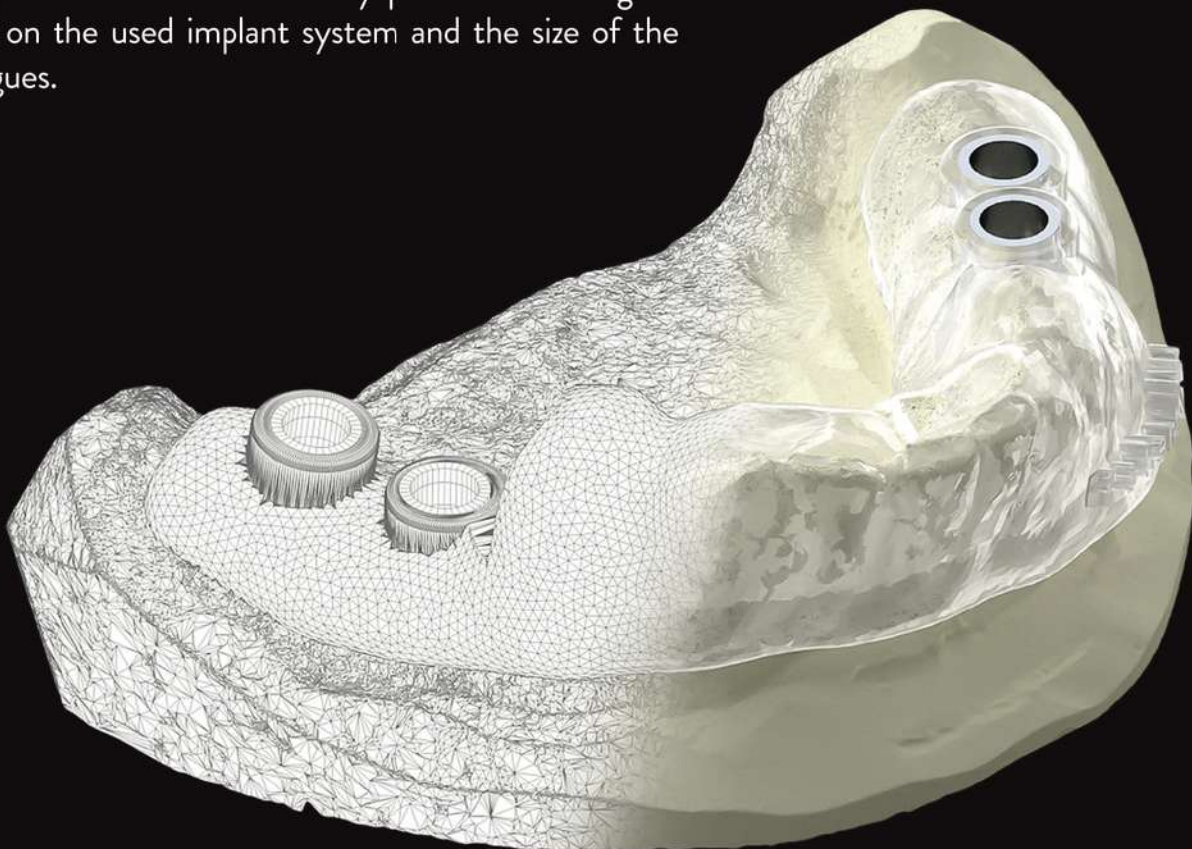
MaCoGuide allows you to create mucosa supported, teeth supported, bone supported and double-scan CT surgical guides.

With a few clicks of the mouse you can create an extremely precise and customized surgical guide. Simply by selecting the edge of the surgical guide and the type of bushes to use, **MaCoGuide** generates the STL file ready to be printed with a 3D printer.

Advanced features allow you to add text to the surgical template, create inspection holes, and add text to better identify the printed template. **MaCoGuide** allows you to export the model for suitably perforated analogues based on the used implant system and the size of the analogues.



MaCoGuide is a module
of MaCo 3D software





Zona Industriale Buccino | 84021 | Salerno, Italy

Ph. (+39) 0828 95.80.44

www.macodentalcare.com

info@macodentalcare.com