

# LUXE

THE COLORADO HOME REDEFINED™



[www.luxecolorado.com](http://www.luxecolorado.com)



\$ 6.95 US WINTER







## CASTLE KEEP

WRITTEN BY **PATRICK SORAN**

PHOTOGRAPHY BY **DAVID MARLOW AND BRENT MOSS**

When the word “fusion” comes up we usually think of delicate California cuisine that mixes the subtle flavors of Asia with the more robust fresh produce textures of California. But in architecture, fusion implies the considered combination of two distinct design styles. In this 10,000-square-foot house in Bachelor Gulch, Colorado, for instance, the Old World romantic charm of a medieval French castle blends with the New West strength of timber and stone.

The architect, Jeff Terrell, of RMT Architects in Avon, Colorado, wanted to create a house that puts the two styles together in a way that enhances each. “We were after more of a soufflé than a casserole,” Terrell says.

To succeed, he and home builder Andy Beck combined two recipes. First, they took the profiles and silhouettes of a castle but built it with materials that respond well to Colorado’s climate and history.

Terrell used steep roofs, turrets, stepped windows and other tricks of the castle designer’s trade. And Beck had the home built not by inattentive serfs but by craftsmen using Colorado buff sandstone, custom Douglas fir window casings, slate roofing and copper flashings.

<b>ARCHITECT</b> Jeff Terrell	<b>FIRM</b> RMT Architects, Avon	
<b>BUILDER</b> Andy Beck	<b>FIRM</b> Beck Building Company, Vail	
<b>BEDROOMS</b> 5	<b>BATHROOMS</b> 6	<b>SQUARE FEET</b> 10,000

### HOUSE PICK

Upholstered in ruby-red velvet, this royal-inspired chair features a golden embroidered scroll design that appears as a mirror image on the back of the seat in reverse colors. *Horchow*, \$2,079. [horchow.com](http://horchow.com)







#### CASTLE IN DISGUISE

Because of local regulations, the home needed to have lines similar to any other heavy timber home: steep roofs, stone piers, timber trusses.





#### HOUSE PICK

Sumptuous fabrics, appealing colors and intricate details transform these pillows into more than just an ordinary home accessory. *Dransfield and Ross*, starting at \$148. *HW Home*, 303.545.0320



#### CONTINUED FROM PAGE 151

Second, they designed the home so that it appears as if it had been built over many eras. "We conjured the notion that the main house was built by the pioneers," Terrell says, "and that each generation had added on as it prospered." That meant that there is not one mansion but a central "home" with expansions that might seem to have been added 50 or 100 years later.

The "oldest" part of this fairy-tale castle is the master suite. The bedroom, study, closets and a gallery stretch out in baronial splendor. Nearby, a stairway rising could easily lead to the stone tower required of any keep.



WE CONJURED THE NOTION THAT THE MAIN HOUSE WAS  
**BUILT BY THE PIONEERS** AND THAT EACH  
GENERATION HAD ADDED ON AS IT PROSPERED



CONTINUED FROM PAGE 153

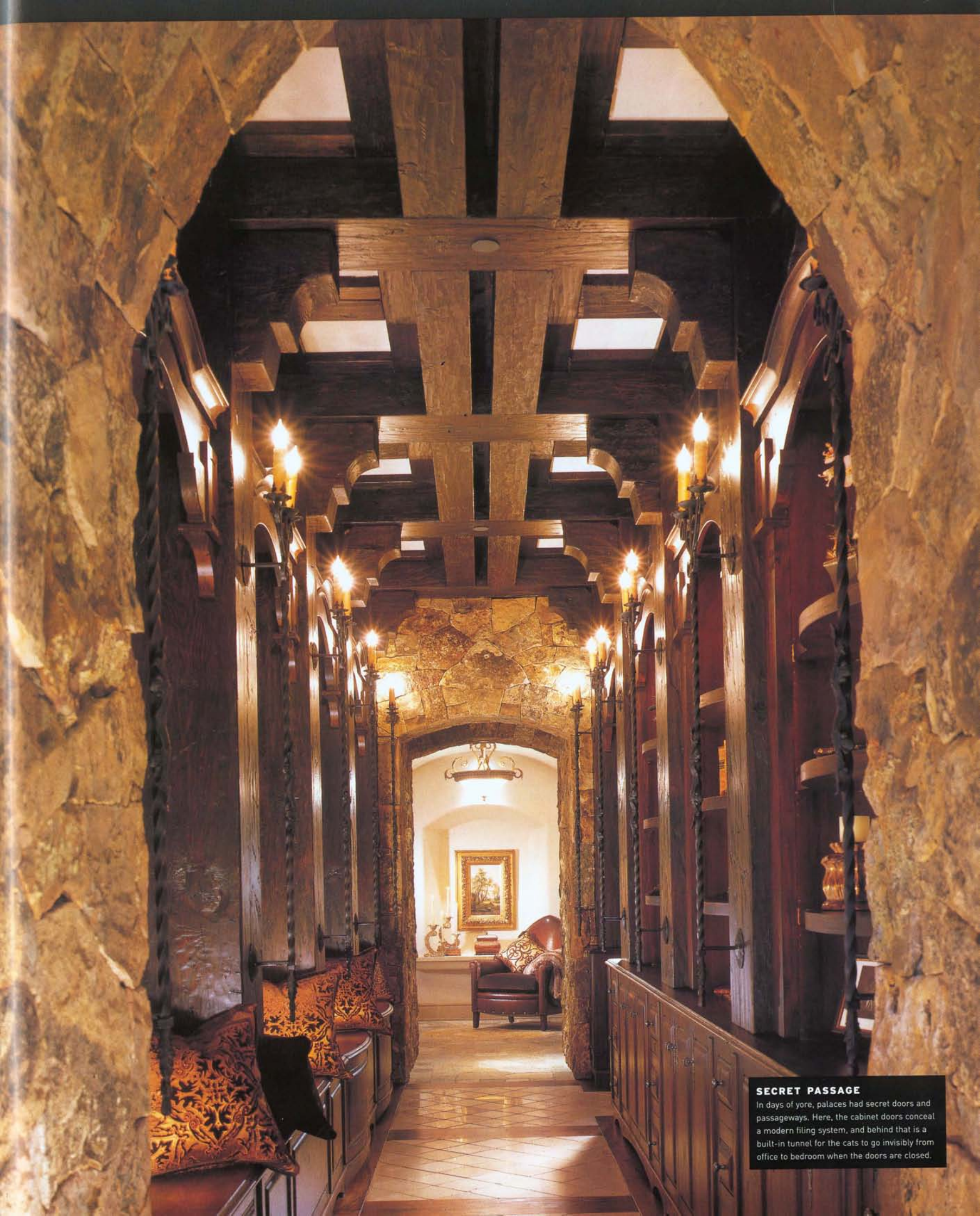
**ROYAL PROPORTIONS**

The home's exterior, designed with Colorado buff sandstone and Douglas fir window casings, features slate turrets, stepped windows and steep roofs.

This area is connected to the rest of the house by a bridge girdled with details of steel, definitely a medieval motif. The bridge turns into balcony overlooks, peering down onto the great room and kitchen.

If the exterior stirs together European massing and local materials, the interiors blend unabashedly Old World details. The owners wanted the spaces to feel ancient, so Terrell applied time-honored ideas. For many of the walls, he used heavily textured sandstone—sometimes as the wall material, sometimes as edge trim. Other vertical surfaces are sheetrock troweled out with a heavy texture.

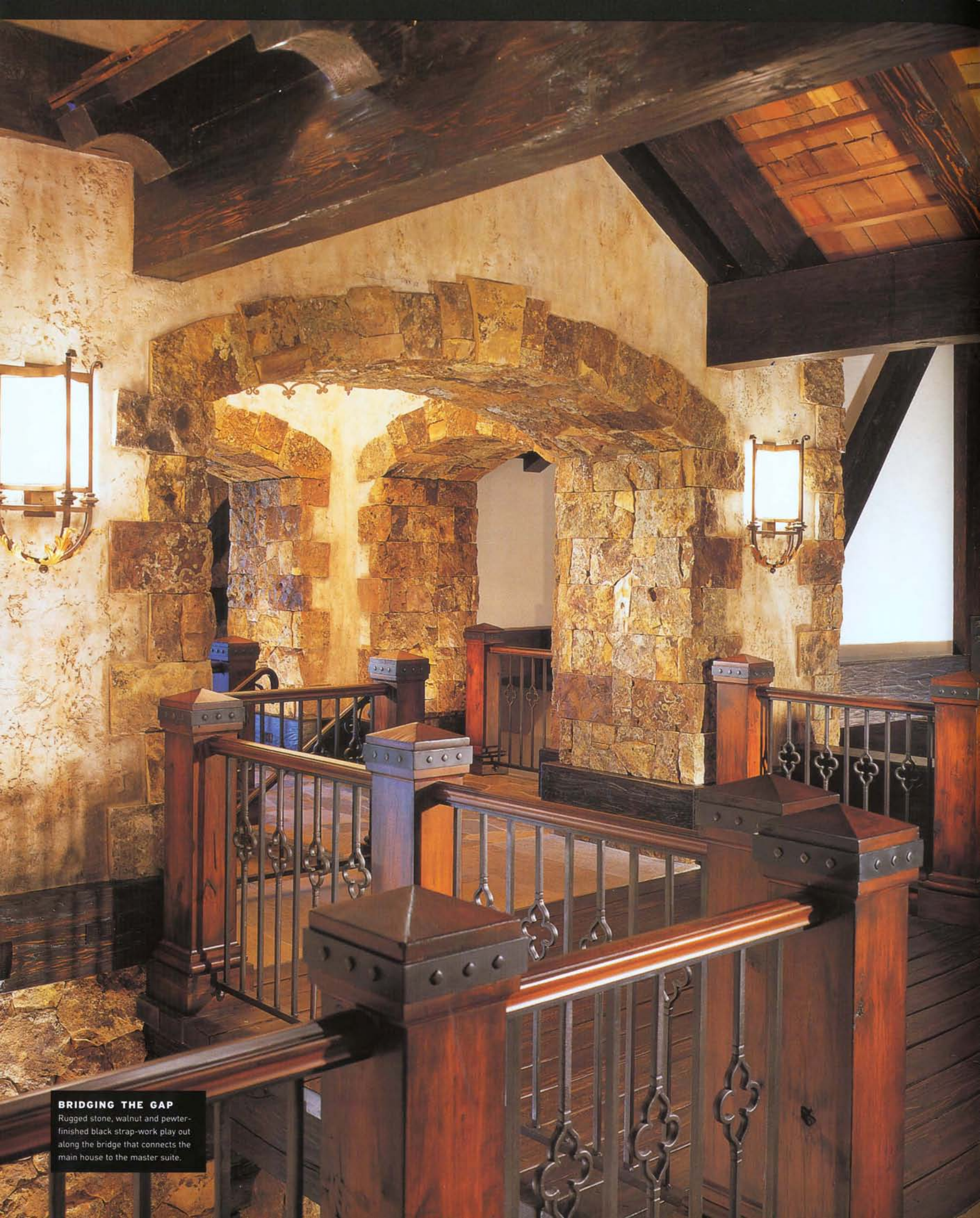




#### SECRET PASSAGE

In days of yore, palaces had secret doors and passageways. Here, the cabinet doors conceal a modern filing system, and behind that is a built-in tunnel for the cats to go invisibly from office to bedroom when the doors are closed.





#### BRIDGING THE GAP

Rugged stone, walnut and pewter-finished black strap-work play out along the bridge that connects the main house to the master suite.





CONTINUED FROM PAGE 154

#### TRUSTY TURRET

The breakfast area contains several inset windows as well as elaborate collar and beam woodworking. While the room may feel dark, it is well lit and lightened by many windows and lighthearted accessories.

The fireplace and some door trims were cast out of marbleized concrete to give them a rugged, antique look. Floors are flagstone or walnut. Metals are a pewter-finished steel. The furniture is upholstered in leather or tapestry-weight cottons. And the sumptuous chambers are lit with dramatic wall sconces and chandeliers. "The owner wanted strength and darkness," says Beck, "but she didn't want to live in a dark home." Like any good recipe, this medieval mélange is a mix of old and new. **L**