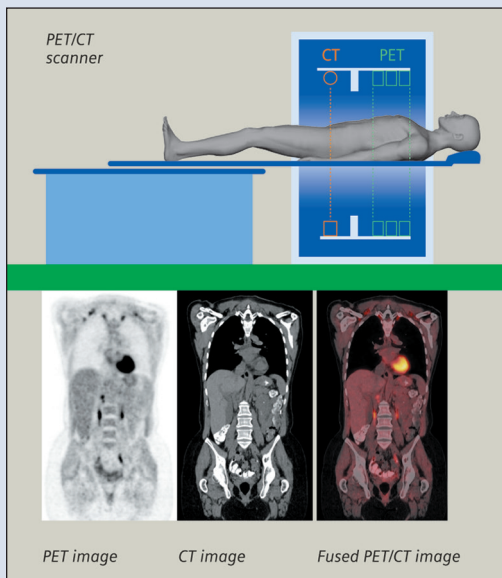




Positron Emission Tomography and Computed Tomography (PET/CT)

As the name implies, this examination combines two scanning techniques—the **PET** (Positron Emission Tomography), that shows different functions in the body, and the **CT** (Computed Tomography), that shows detailed structural anatomy—all into one scan.



In order to ensure the highest quality of patient care, New England PET has retained Dr. Samantha Harrington as its Chief Medical Officer. Dr. Harrington is a Radiologist at Massachusetts General Hospital.



NEPET at Steward Holy Family Hospital

70 East Street
Methuen, MA 01844
(978) 689-4738

Massachusetts Mobile PET, P.C. at Steward Holy Family Hospital - Haverhill

140 Lincoln Avenue
Haverhill, MA 01830
(978) 689-4738

NEPET of Greater Lowell

Lowell General Hospital Cancer Center
295 Varnum Avenue
Lowell, MA 01854
(978) 458-9872

NE PET

The Elliot at River's Edge

185 Queen City Avenue
Manchester, NH 03101
(603) 663-2370

To schedule a PET/CT, or for more information and directions, please call your local NE PET location or visit our website:

www.nepetimaging.com



About Your PET/ CT Scan



Accredited by the American College of Radiology

New England PET Imaging System

What Is PET?

Positron Emission Tomography (PET) is a non-invasive form of medical imaging approved by Medicare for diagnosis and management of several forms of cancer including:

- Lung Cancer
- Colorectal Cancer
- Melanoma
- Head and Neck Cancer
- Thyroid Cancer
- Neuroendocrine
- Breast Cancer
- Esophageal Cancer
- Lymphoma
- Cervical Cancer
- Ovarian Cancer
- Prostate Cancer

PET is also approved by Medicare for use in Alzheimer's Disease.

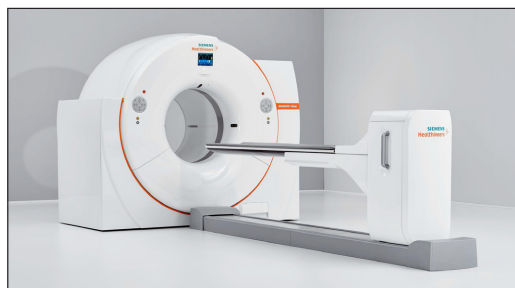
What Is PET/CT?

PET/CT combines in one single study the functional information of PET with the anatomical information provided by a CT scan. This PET/CT information will enable your physician to pinpoint the exact location of interest and helps in making an accurate diagnosis.

What Will Happen During Your PET/CT Scan?

On the day of your scan, you will receive a small injection of a radioactive tracer. The tracer is not a dye and will not produce any sensations or reactions. The tracer will then circulate through the body and be absorbed by both normal and abnormal tissues. The PET/CT scanner will identify this distribution. You will relax for up to 60 minutes while the material circulates through your system and gets absorbed by your body's cells. During this waiting time, you may read and listen to music but should refrain from any other activity.

The second part of the PET/CT scan is the actual imaging procedure. You will be positioned by a technologist on a cushioned scan table that moves through the scanner at regular intervals. Generally the scanner will image the area from your eyebrows to mid-thigh and will take about 15 to 20 minutes. The technologist will be able to communicate with you throughout the PET/CT study. If you have any concerns regarding claustrophobia, please contact your referring physician prior to your scheduled appointment to discuss this.



New England PET Imaging System's PET/CT scanner

Patient Preparation

Fasting for four hours prior to the scan is necessary. Water is allowed, but other liquids or foods are not—not even chewing gum or cough drops. All metal will need to be removed for scanning including partial denture plates with metal clips, clothing with zippers, under-wire bras, and all jewelry. The scan room may seem cold, so you should wear warm, loose-fitting clothing. If you are diabetic and insulin dependent, you will need to check with our office staff for specific instructions. Likewise, if you are a chemotherapy or radiation therapy patient, we will need to discuss your appointment date with you. Patients having a PSMA, Dotatate or Amyloid Brain scan, no fasting or diabetic prep is necessary.

Test Results

The images from the PET/CT study will be interpreted by a physician with special training in PET/CT. The PET/CT report will be sent to your referring doctor as soon as it is available—usually within 24 hours of the exam. Your doctor will then discuss the results with you.

What Happens After the Scan?

You have no restrictions after a PET/CT scan and can go about your normal activities. To help eliminate the tracer from your body, drink plenty of fluids and void often. There are no dietary restrictions. You may eat whatever you like after your scan.

Reimbursement for PET/CT Scans

Medicare covers PET/CT scans for many types of cancer and certain types of cardiac and neurologic studies. Most private insurers also provide reimbursement for PET/CT studies. New England PET's office staff are well versed in insurance guidelines and will work to obtain any required approvals from your referring provider's office.

Financial Arrangements

Prior to the exam, New England PET will need your complete medical insurance coverage information. You must be sure to bring a photo ID, your medical insurance card(s), and all other pertinent insurance coverage information to your exam. Copayments are due at the time of visit.

New England PET is an independent facility. Insurance coverage for our services may be different from coverage for other services at the various hospitals where we are located. For questions about insurance policy coverage, please consult your insurance carrier directly.

Cancellations

Please notify us at least 24 hours in advance to reschedule an appointment. Thank you.

For PET/CT Scheduling and Other Information

If you have questions about your appointment or the PET/CT scan, please call the phone number listed on the back page of this brochure. For general information, please go to our website: www.nepetimaging.com.