

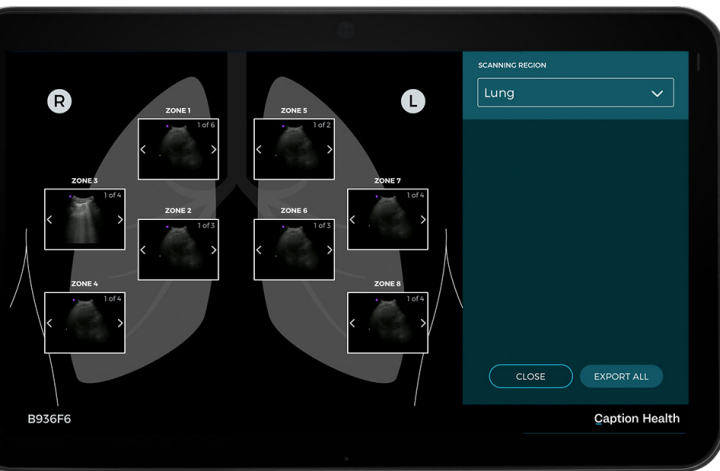
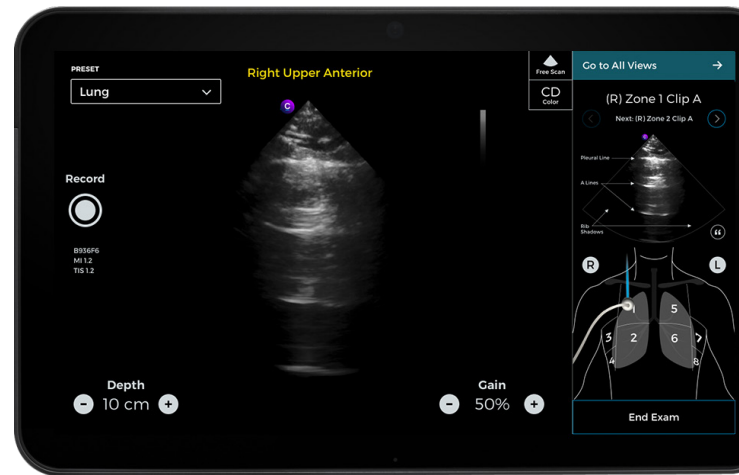
Welcome to Caption AI - Version 1.4.0

Congratulations on upgrading Caption AI! Caption Health is constantly working to build new capabilities and algorithms, refine features, and make Caption AI easier to use and integrate into your workflow.

Here's what's new in this version:

Lung Scanning

Support for an 8-zone lung protocol to scan anterior and lateral lung views with static reference information (lung zone diagram, reference images of normal lungs, and probe & patient positioning instructions).

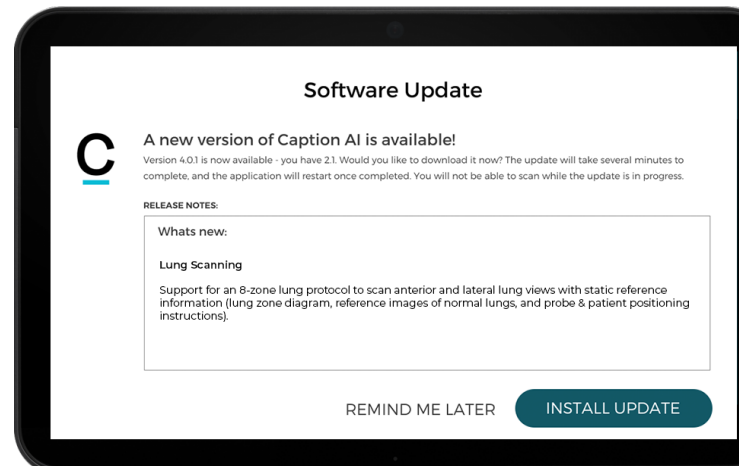


Lung Report

A summary view of all lung clips, organized by zone, to facilitate systematic review and interpretation. Click into individual zones to view clips from that zone.

AutoUpdate

Future software updates for Caption AI will be automatically downloaded and installed onto the device over Wi-Fi, without the need for manual installation.



Annotation

Users now have the ability to annotate exported clips with the view name in the scanning protocol.

Custom Protocols

Users can now add a free scan into a scanning window, giving them the ability to capture a guided view and a corresponding color view immediately after.

Launch Interface

Users now receive immediate feedback that Caption AI is loading after launching the application.

Metadata

Deleted studies will now be present in metadata exports to improve data integrity and visibility into device usage.

Other Tips

- This software version (1.4.0) will be installed manually, but infrastructure is being put in place to automatically update devices in the field for future releases.
 - The software update pipeline has been designed with a number of security controls to comply with hospital policies.
 - Caption Health will put machines into “update groups” and carefully control which devices receive which version.
- Refer to the Quick Reference Guides and other documents provided for more information.

Version History

Version	Description	Date
1.1.0	Initial release	9/15/2020
1.1.1	Minor bug fixes and enhancements	10/20/2020
1.2.0	Feature release, performance and guidance enhancements	04/2021
1.2.1	Minor bug fixes	05/2021
1.2.2	AutoEF hotfix	05/2021
1.3.0	Minor bug fixes and security updates for DICOM support	6/18/2021
1.4.0	New lung features and UI update, bug fixes	09/2021

Questions? We're here to help.

URGENT

Call (855) 506-4357 *7am - 7pm ET (US)*

NON-URGENT

Text (855) 506-4357 *Preferred - 24/7 support*

Email support@captionhealth.com