

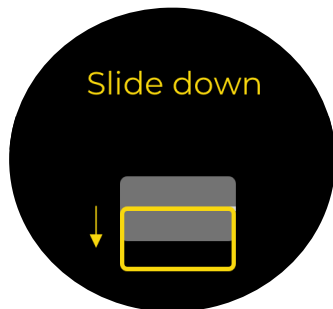
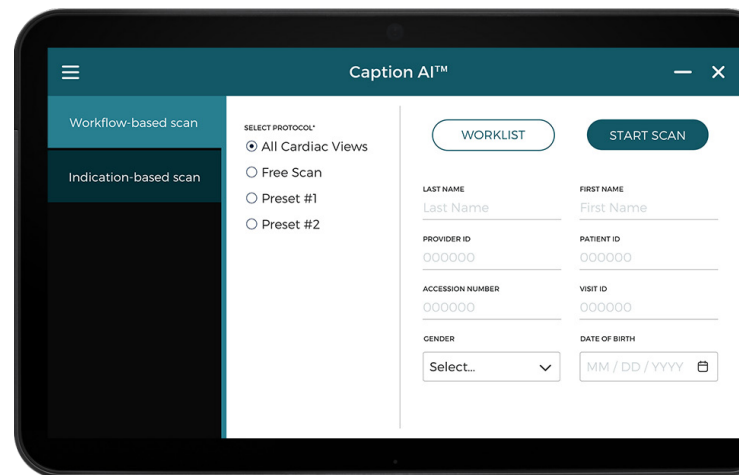
## Welcome to Caption AI - Version 1.2.2

Congratulations on upgrading Caption AI! Caption Health is constantly working to build new capabilities and algorithms, refine features, and make Caption AI easier to use and integrate into your workflow.

**Here's what's new in this version:**

### Modality Worklist & Barcode Scanner Support

Select orders from a Modality Worklist or use a 1D barcode scanner to populate patient details.

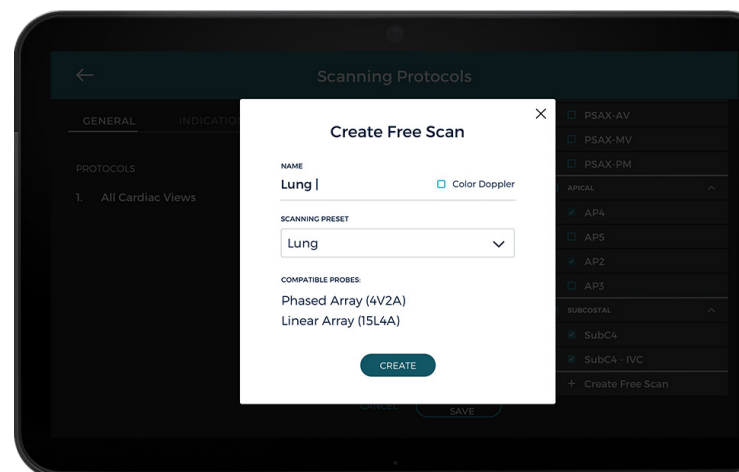


### Updated Prescriptive Guidance

The Quality Meter and Prescriptive Guidance have been updated for a more responsive scanning experience.<sup>1</sup>

### Additional Imaging Presets

Optimize image quality for non-cardiac views with support for additional presets in Free Scan and Color Doppler modes.<sup>2</sup>



<sup>1</sup> Note: Prescriptive Guidance updated for the IVC, SubC4, and AP4 views. Quality Meter updated for the IVC view.

<sup>2</sup> Note: Free Scan and Color Doppler modes do not include AI guidance.

## Enhanced Custom Protocols

Add free scans to a custom protocol to seamlessly transition between guided cardiac views and unguided lung, DVT, or other scan types.

## Metadata Export

Export metadata to identify insights and trends in utilization, image quality, and more. Contact Caption Health for help with analysis and insights.

## Linear Probe Support

Use the linear transducer for vascular and musculoskeletal scanning or ultrasound-guided procedures.

## Enhanced Performance

Faster load times, depth changes, and view transitions create a smoother scanning experience.

## Other Tips

- Use filters on Modality Worklist queries for faster load times.
- Training videos and other helpful resources can be found on the device's desktop.
- Note that stopping an ongoing DICOM export will pause the software for 15-20 seconds.
- Refer to the Quick Reference Guide and other documents provided for more information.

## Version History

Version	Description	Date
1.1.0	Initial release	9/15/2020
1.1.1	Minor bug fixes and enhancements	10/20/2020
1.2.0	Feature release, performance and guidance enhancements	04/2021
1.2.1	Minor bug fixes	05/2021
1.2.2	AutoEF hotfix	05/2021

## Questions? We're here to help.

### URGENT

Call (855) 506-4357 *7am - 7pm ET (US)*

### NON-URGENT

Text (855) 506-4357 *Preferred - 24/7 support*

Email [support@captionhealth.com](mailto:support@captionhealth.com)