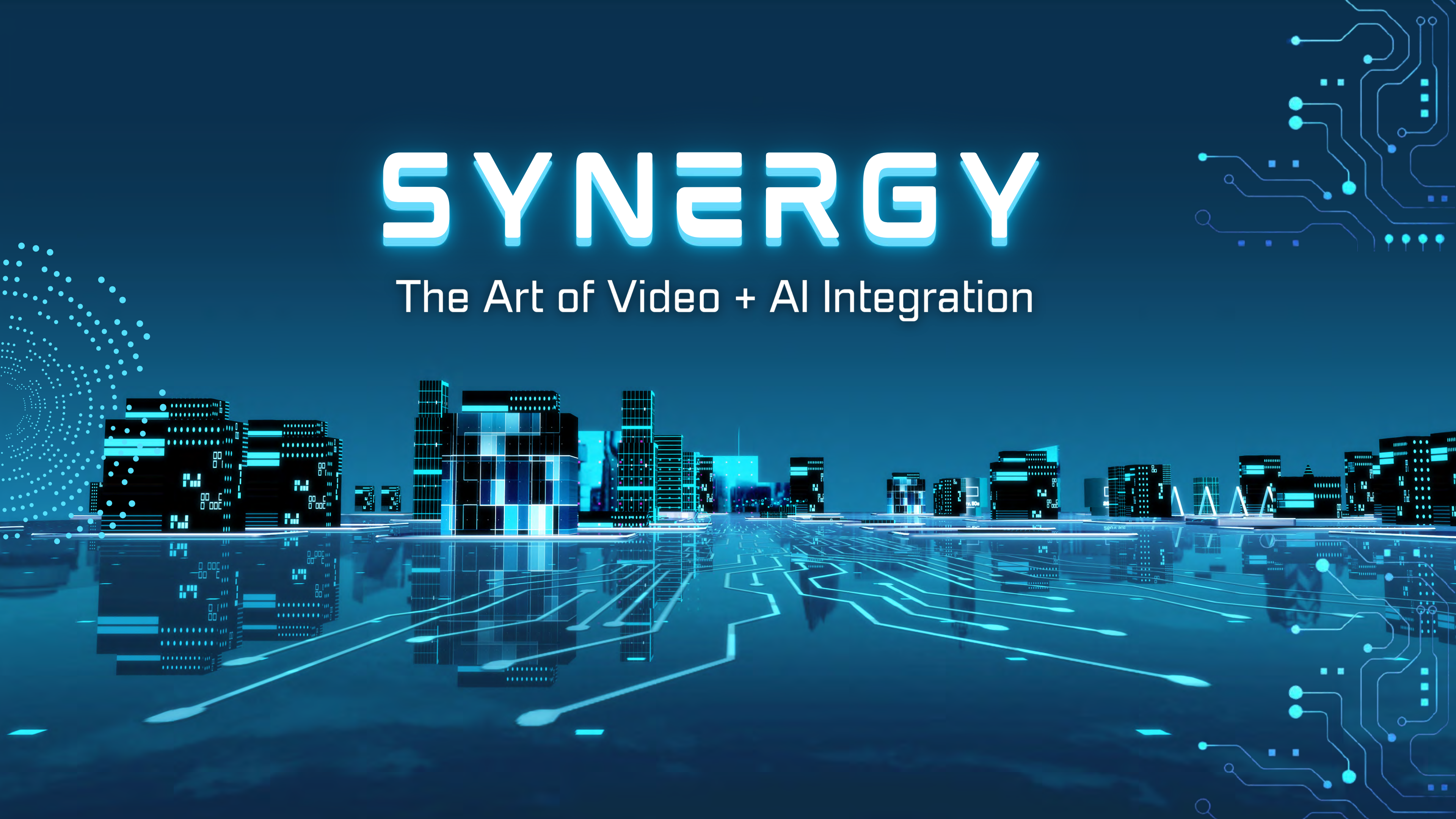


SYNERGY

The Art of Video + AI Integration



ABOUT THE SPEAKER



I AM PASSIONATE ABOUT HELPING SECURE THE
WORLD BY EDUCATING OTHERS ABOUT THE LATEST
PHYSICAL AND DIGITAL SECURITY SYSTEMS.

BRIAN DENMEADE | FIELD APPLICATION ENGINEER

SYNERGY

The Art of Video + AI Integration



● Introduction

New Threats on the Horizon

AI-driven Analytics in Action

Practical Applications

Top Benefits of AI / VMS Synergy

Q&A



INTRODUCTION

In an era where security threats are increasingly sophisticated, the need for equally sophisticated surveillance solutions is paramount.

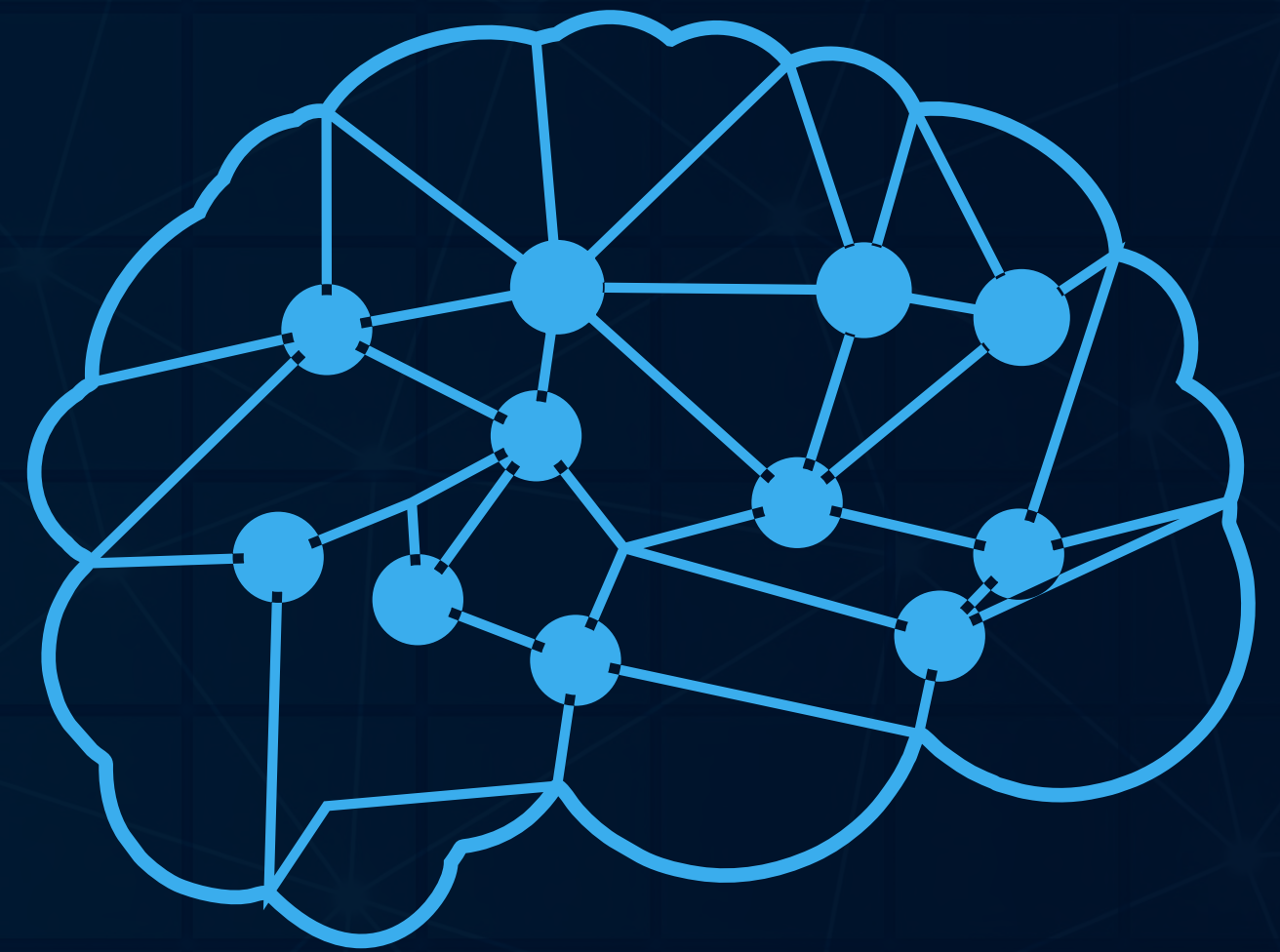
In this webinar, we will explore the cutting-edge integration of Video Management Software with AI analytics, a combination redefining the surveillance technology landscape.

KEY TAKEAWAYS

- Understand how integrating video management software and AI analytics can revolutionize surveillance.
- Learn about the advanced detection and recognition capabilities enabled by AI-driven analytics.
- Discover how to enhance safety and operational efficiency with smarter surveillance technology.
- Gain insights into a comprehensive surveillance solution's practical applications and benefits.

SMARTER SURVEILLANCE

The evolving landscape of security threats in 2024: Security threats are becoming more sophisticated, and AI-powered video surveillance systems are playing a crucial role in improving threat detection and response. These systems can identify various threats, including intruders, allowing quicker and more effective responses to potential security breaches.



THE ROLE OF TECHNOLOGY

Modern surveillance technology is transforming how security professionals monitor and understand potential threats. Smart technology, including AI and machine learning, is being integrated into surveillance systems to enhance security monitoring capabilities, providing more comprehensive and proactive security measures.



THE AI + VMS SYNERGY

CORTROL Video Management Software is among the leading solutions in the video surveillance market, designed to offer advanced management capabilities for security footage.

The AI Box complements this software by providing additional, specific AI-powered analytics, which can further enhance the functionality of surveillance systems by enabling features such as object recognition and behavior analysis.

NEW THREATS ON THE HORIZON

2024 SECURITY THREAT PREDICTIONS

As we move into 2024, the landscape of security threats is expected to evolve significantly.

- Cyber threats
- IoT device vulnerabilities.
- Physical security threats

CYBER THREATS - NDAA COMPLIANCE

NDAA Compliance refers to adhering to the provisions outlined in the National Defense Authorization Act, which is a U.S. federal law that specifies the budget and expenditures for the Department of Defense.

It is important to look for NDAA-compliant products, especially in security equipment and systems, as it ensures that the products and technology used adhere to the regulations outlined in the NDAA.



TECHNOLOGY TO KEEP YOUR ORGANIZATION SAFE.

AI BOX + **GANZ CONTROL**



NDA
COMPLIANT

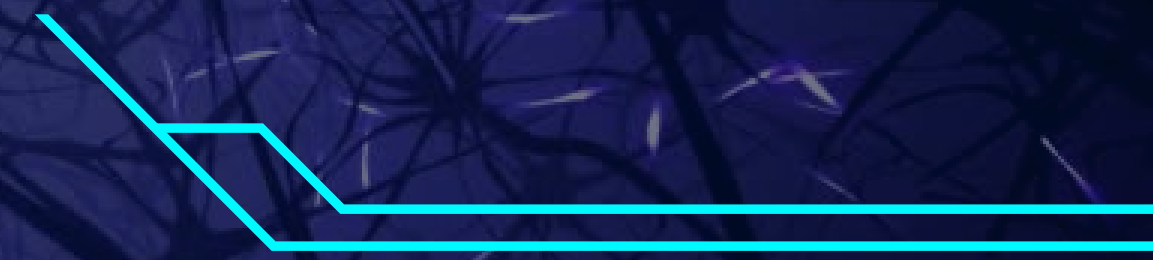


● AI-DRIVEN ANALYTICS IN ACTION



DEEP LEARNING

The AI Box is equipped with deep learning algorithms that enable it to learn from large amounts of data and improve over time. This can include object recognition, pattern detection, and predictive analytics, essential for complex tasks such as video surveillance and data analysis.



AI-DRIVEN ANALYTICS IN ACTION

AI BOX LICENSE PLATE RECOGNITION

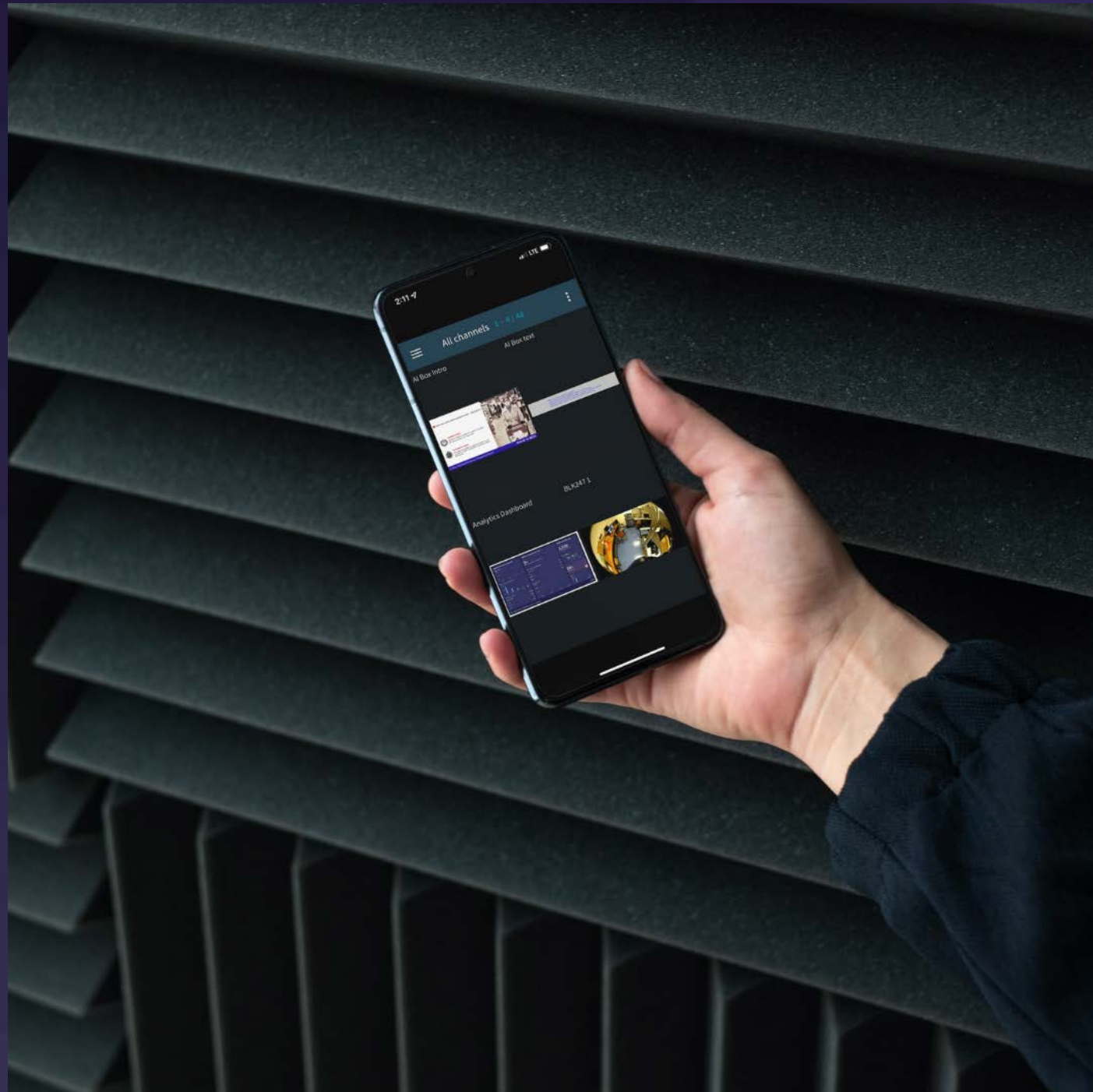


The screenshot displays the CANZ AI Box management interface. The left sidebar contains navigation options: VIDEO (Video Input, Video Stream, False Alarm Reduction), DISPLAY (Display, Event Action List), SYSTEM SETTINGS (Network, System, License Management), and APP SETTINGS (Explore AI Apps, Active AI Apps, System Event Settings). The main content area is titled 'Video Stream' and shows resource usage for the AI Engine (3960/4000), Video Decoding (929/1000), and Video Resolution (427/1000). Below this is a 'Stream Info' table listing 8 active AI applications.

ID	Application Name	Status	Resolution	FPS	Actions
1	LPR	Connected	2048x1152	30.15fps	🔍 +
2	Parkinglot PTZ	Connected	2048x1536	29.75fps	🔍 +
3	South Door	Connected	1920x1080	30.05fps	🔍 +
4	East Door	Connected	1920x1080	29.75fps	🔍 +
5	Warehouse Door	Connected	1920x1080	34.46fps	🔍 +
6	TSD	Connected	1920x1080	30.75fps	🔍 +
7	TSD Exit	Connected	1920x1080	29.75fps	🔍 +
8	TSD Entrance	Connected	1920x1080	30.05fps	🔍 +



AI-DRIVEN ANALYTICS IN ACTION



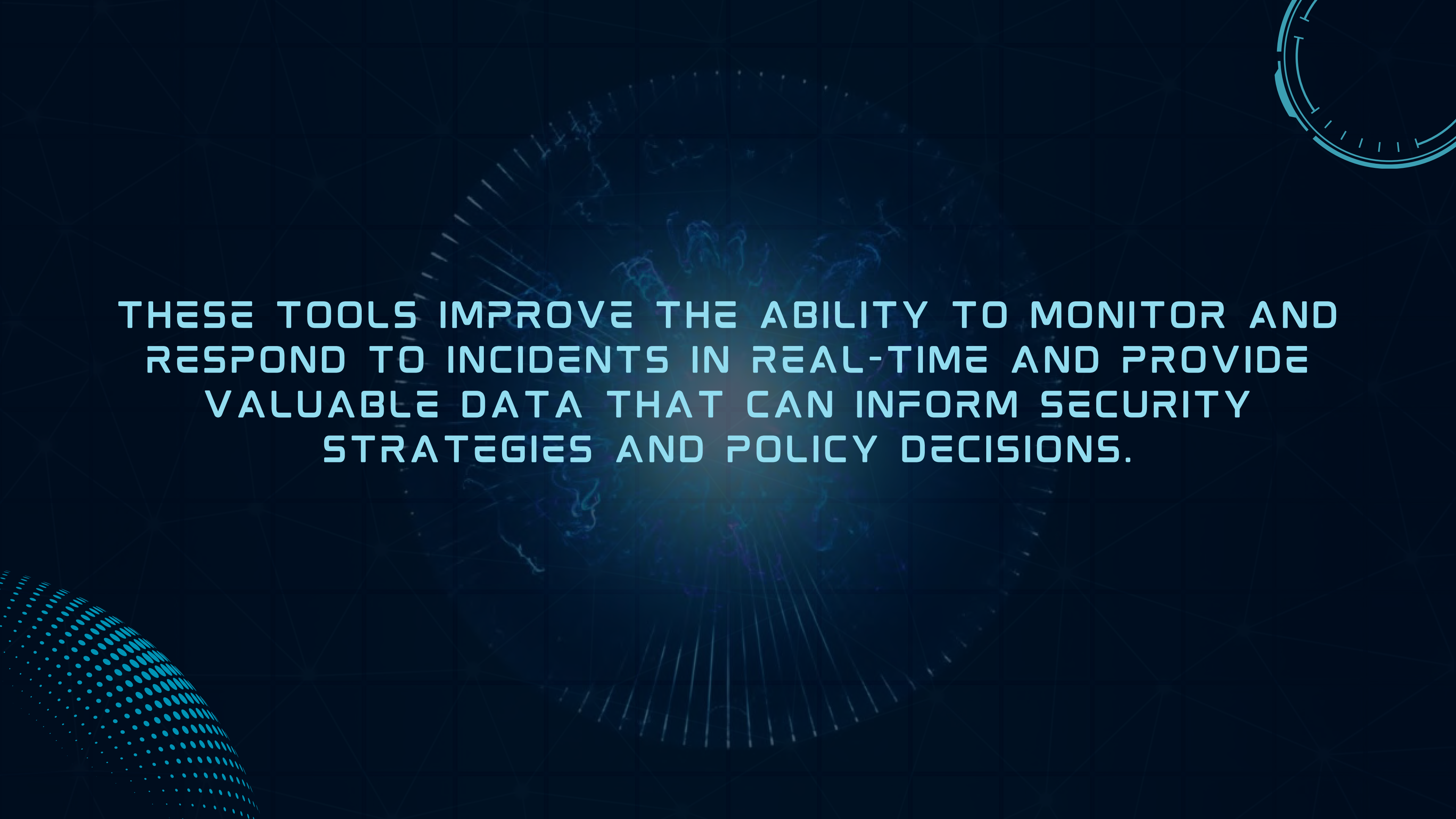
REAL-TIME ALERTS
AND AUTOMATED
RESPONSE PROTOCOLS



CORTROL VMS & AI BOX INTEGRATION

The screenshot displays the Cortrol VMS & AI Box Integration software interface. The main window shows a live video feed of a white car driving on a road. The car's license plate is highlighted in pink and reads "A1TU6". The word "Home" is visible on the road sign in the background. The interface includes a top navigation bar with options like "Live", "Playback", "Sequence", "Smart Search", "Alerts", "Library", "Data Sources", "Access Control", "Reports", "VA Investigation", and "AI BOX Group". A left sidebar contains a search bar and a list of channels, including "ZIN-AI BOX-STD 1" through "ZIN-AI BOX-STD 8". A right sidebar displays a list of AI events with timestamps and event IDs.

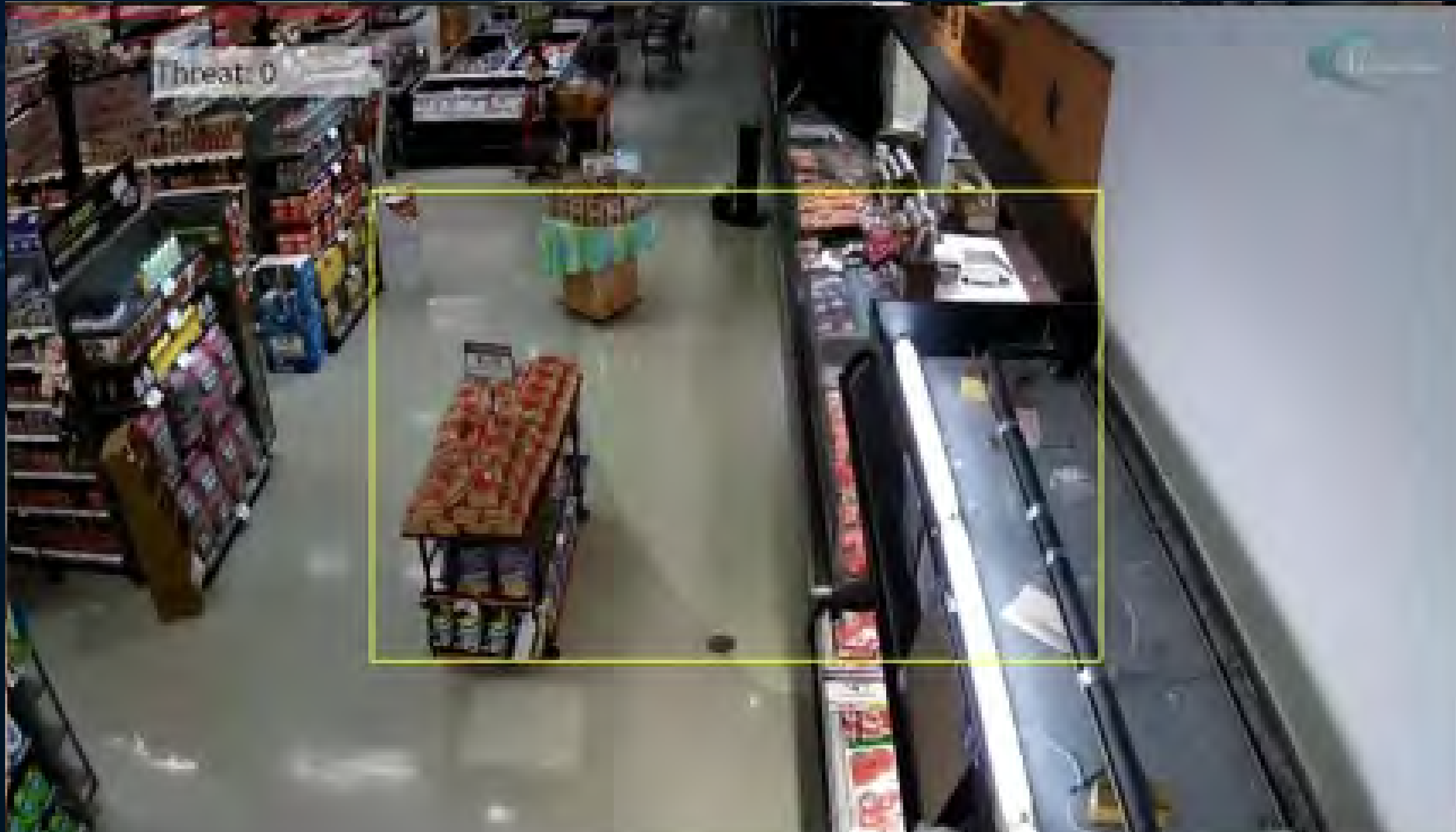
Timestamp	Event ID
2/20/2024 3:39:06 PM	Event: A1TU6
2/20/2024 3:38:38 PM	Event: CAY237D
2/20/2024 3:38:30 PM	Event: FEF545
2/20/2024 3:38:23 PM	Event: EF5485
2/20/2024 3:38:05 PM	Event: LF1373
2/20/2024 3:37:50 PM	Event: EX5904
2/20/2024 3:37:34 PM	Event: HMZL5
2/20/2024 3:13:54 PM	Event: ELA170
2/20/2024 3:13:26 PM	Event: CAY2370
2/20/2024 3:13:17 PM	Event: FEF5485
2/20/2024 3:13:11 PM	Event: EF545
2/20/2024 2:48:21 PM	Event: [unclear]



THESE TOOLS IMPROVE THE ABILITY TO MONITOR AND
RESPOND TO INCIDENTS IN REAL-TIME AND PROVIDE
VALUABLE DATA THAT CAN INFORM SECURITY
STRATEGIES AND POLICY DECISIONS.

CASE STUDIES

RETAIL



- Layouts
 - Local
 - Demo Server (xxxxxxxxxxxxx) (xxxxxxxxxxxxx)
 - Demo Server External (xxxxxxxxxxxxx) (xxxxxxxxxxxxx)
 - Recording Server (xxxxxxxxxxxxx) (xxxxxxxxxxxxx)
- Channels
 - ALBA Thermal
 - ALBA Vehicle Classification
 - ALBA Vehicle Counter
 - 2N-ABOX-STD 1
 - 2N-ABOX-STD 2
 - 2N-ABOX-STD 3
 - 2N-ABOX-STD 4
 - 2N-ABOX-STD 5
 - 2N-ABOX-STD 6
 - 2N-ABOX-STD 7
 - 2N-ABOX-STD 8
 - City Center
 - CORTRON Info
 - Crossline Basic
 - CCPD - Emergency Communications
- Maps
- Buttons
 - Demo Server (xxxxxxxxxxxxx) (xxxxxxxxxxxxx)
 - Emergency Situation
 - Red Alert
 - Remove Emergency state
 - Stand Down
 - Demo Server External (xxxxxxxxxxxxx) (xxxxxxxxxxxxx)
 - Recording Server (xxxxxxxxxxxxx) (xxxxxxxxxxxxx)

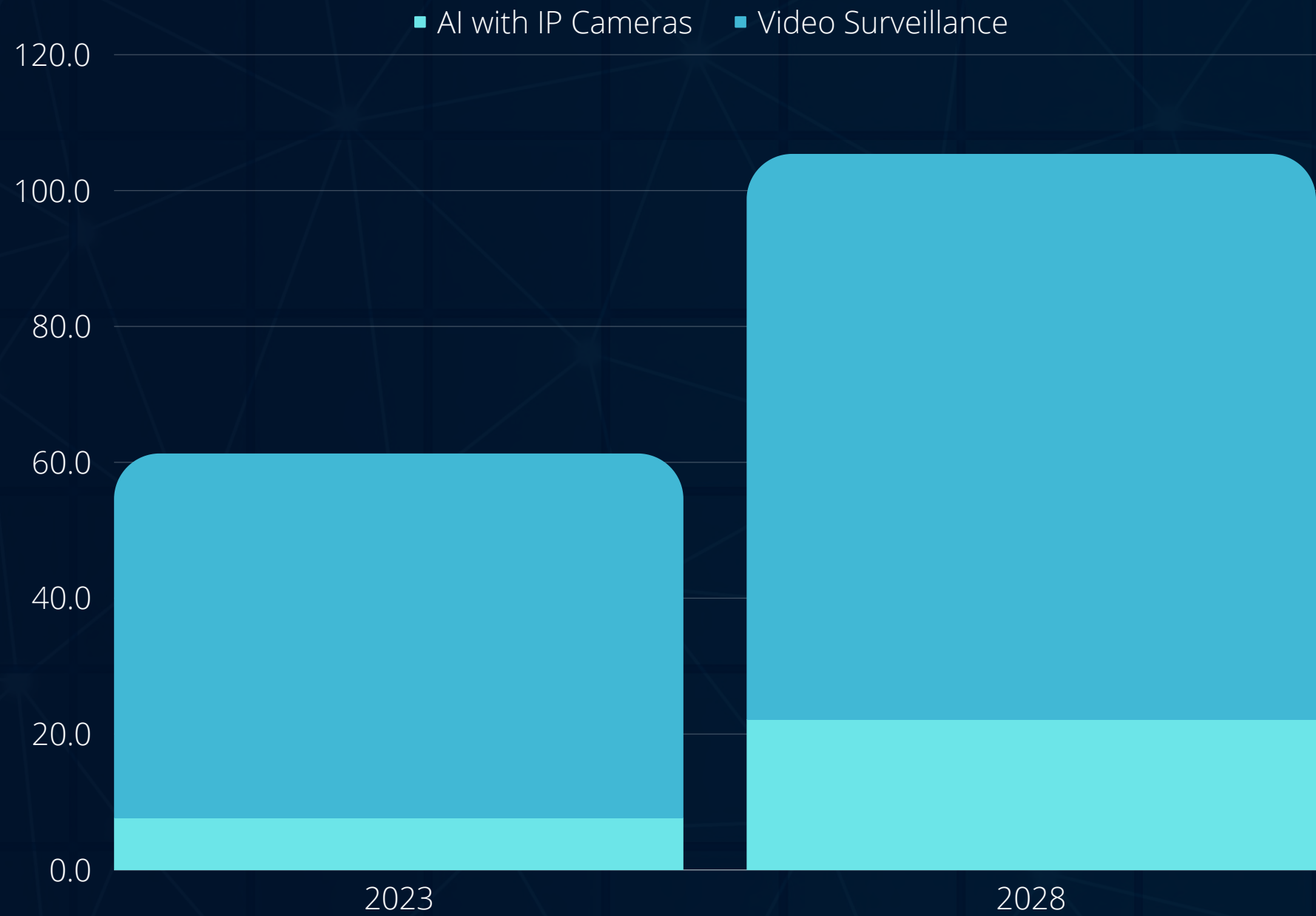


CORPORATE CAMPUSES



STATISTICS

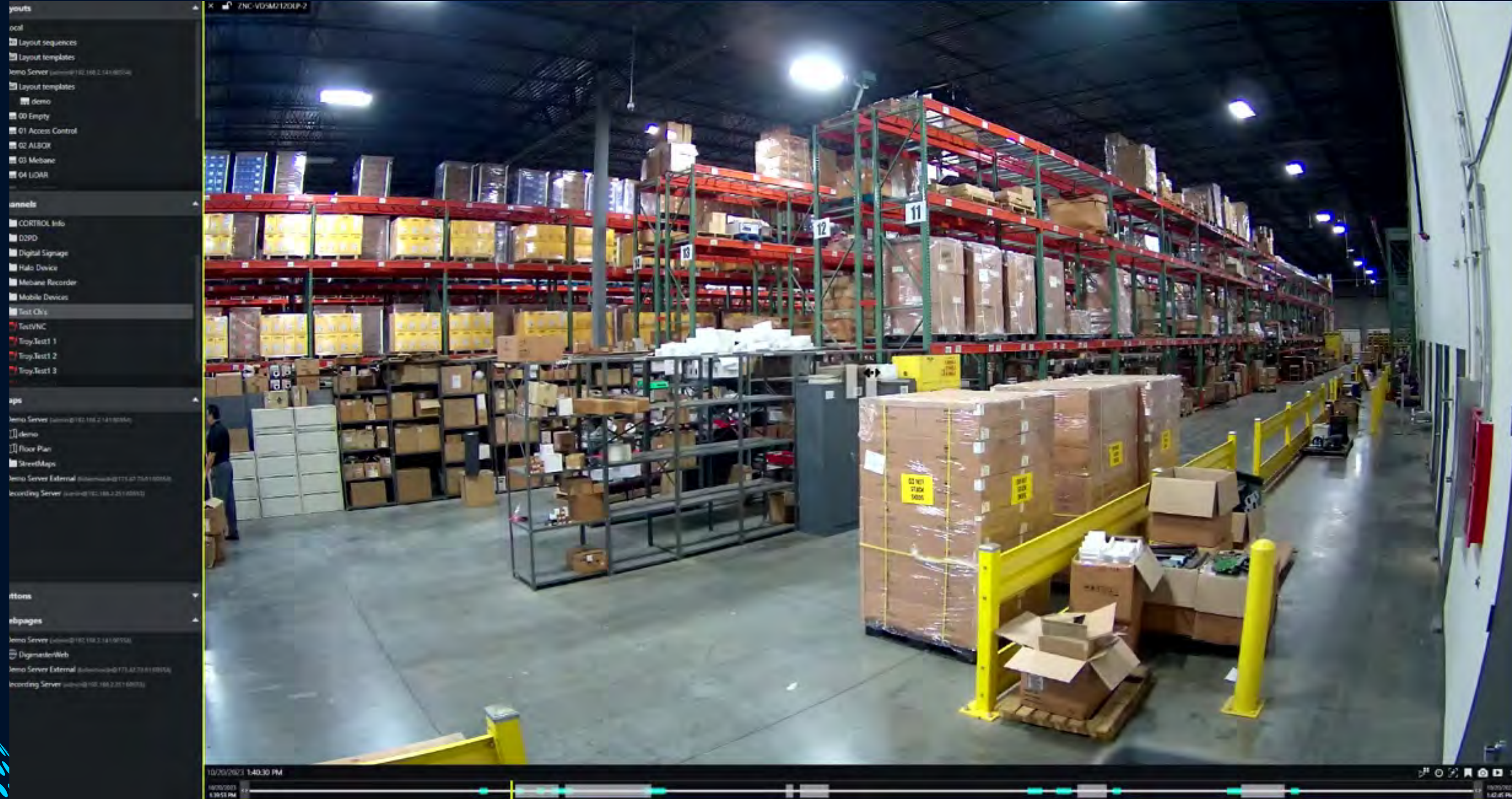
Global Market Share



The Video Surveillance market's Compound Annual Growth Rate (CAGR) is projected at **9.2%** from 2023-2028

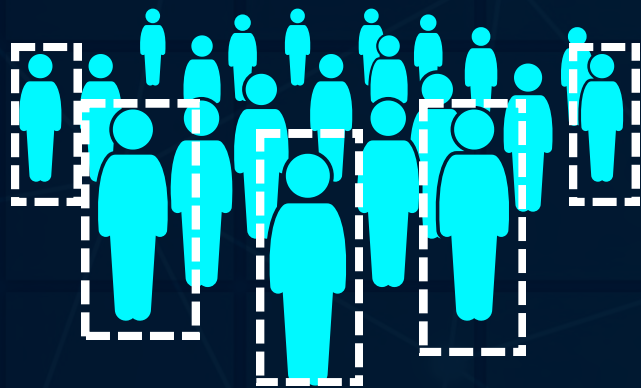
AI with IP surveillance cameras are growing rapidly in popularity

ENHANCING SAFETY & SECURITY



ENHANCING SAFETY & SECURITY

CROWD DETECTION



HUMAN DETECTION



VISITOR ANALYSIS




ANIMAL DETECTION

BODY GAZE



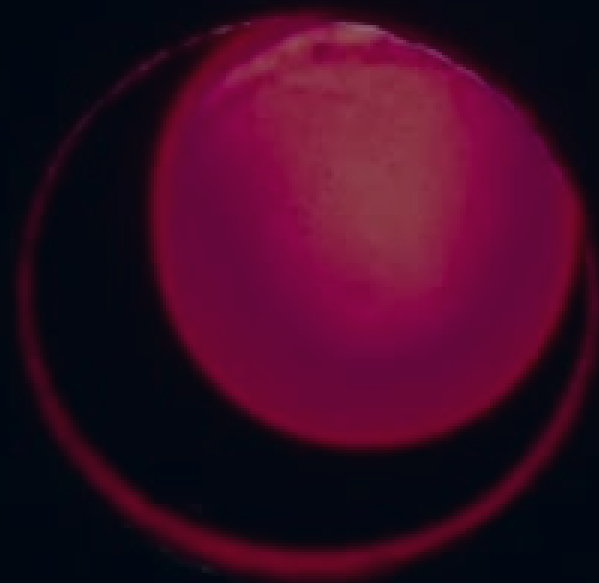
HAND AND FOOT INTRUSION



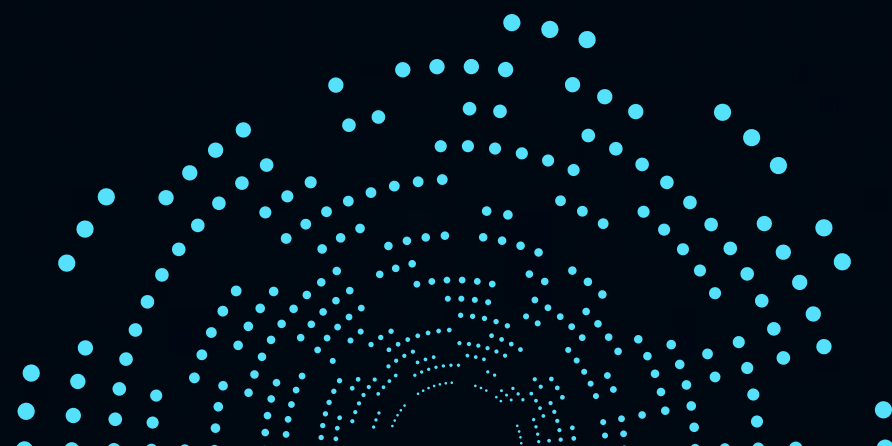


● STREAMLINING OPERATIONS

- Automating surveillance tasks
- Identifying operational inefficiencies
- Minimizing false alarms



FAIL



● BENEFITS OF AI + VMS SYNERGY

- Enhanced Accuracy
- Real-Time Analysis
- Event Prediction and Prevention
- Automated Alerts
- Efficient Data Management
- Workload Reduction
- Integration with other Systems
- Cost Savings

NEXT STEPS



Ganz CONTROL VMS is the core command center of your security installation. CONTROL unifies video surveillance, access control, video analytics, IoT sensors, license plate recognition, intercom communications, biometrics, and other IP systems to provide real-time situational awareness.



The AI BOX enables the pre-existing monitoring system to perform accurate image analytics without replacing cameras or the recording system. Artificial intelligence systems eliminate operator errors while ensuring continuous and consistent effectiveness of high-level security.



AI BOX



THE CORE COMMAND CENTER OF YOUR SECURITY INSTALLATION.



ganzsecurity.com/cortrol

- An intuitive and user-friendly interface allows users to install and configure it quickly
- CORTROL Premier, the foundation of CORTROL Global, is for small to mid-size businesses, combines video analytics, complete surveillance, can use multiple data sources, and several access control integrations, featuring interactive maps with alarm linking, an exceptional event and action manager, and AI analytics powered by a neural network engine
- CORTROL Global, in addition to the Premier core, is a comprehensive enterprise-level VMS solution that includes enterprise-level failover, video wall support, and multi-server deployment
- Over 15,000 integrations from over 190 manufacturers
- 3 million+ channels deployed worldwide



AI BOX

INTELLIGENT DEEP-LEARNING AI ENGINE



- Event rule combining—AI video analytics
- Simple AI setup with existing encoders and IP cameras
- Multi-level AI-based false alarm reduction
- High-performance pose estimation AI technology
- Smart scene detection
- Run multiple AI apps on each video channel
- Easy integration with other systems
- Web-based configuration
- Enhanced security options
- USB, RS-485, LAN, and Wiegand interface
- NDAA-compliant



ganzsecurity.com/aibox

● CONCLUSION

- Achieve advanced surveillance capabilities with AI Box and/or CORTROL VMS
- CORTROL VMS provides a robust platform for managing video surveillance across a single or multiple sites
- Both integrate with existing systems to create a cohesive security solution
- The AI Box with any recording solution can add an additional intelligence layer

ANZ
CORTROL
VIDEO MANAGEMENT SYSTEM



AI BOX

Q&A

FAQ

1. What type of data sources can you use in CORTROL
 - a. How do you use them?
2. Is the AI Box agnostic or proprietary?
3. How many analytics does the AI box currently support?
4. What do you mean by Premier being the “core” of Global?

THANKS!

Brian Denmeade
bdenmeade@cbcamerica.com
+1 919 230-2284

ganzsecurity.com



SOURCES

1. [IPVM](#)
2. [Financial Times](#)
3. [Campus Safety](#)
4. [Security Magazine](#)
5. [Ganz Security](#)
6. [Markets and Markets Reports](#)