



# MAXIMIZING SECURITY EFFICIENCY

*BY LEVERAGING AI ANALYTICS*

SEPTEMBER 28TH, 11AM EST

## About the Speaker



### **Brian Denmeade, Field Application Engineer**

Brian is our tech guru who knows security products from the inside out. He started off as a technician and is now our AI specialist.

How do we harness the power of AI for maximum efficiency in security?



# Data Collection, Analysis, & Monitoring

# 1



AI systems require a large amount of data to learn from. Collecting diverse and relevant data related to security incidents, threats, and vulnerabilities is crucial.

## Machine Learning and Training

AI models need to be trained using the collected data. Machine learning techniques, such as supervised or unsupervised learning, can be applied to train the AI models to recognize and classify different security events, behaviors, or indicators of compromise. The models can learn from historical data and adapt to new and emerging threats.

# 3

## Automation and Response

AI can automate various security processes, such as incident response, threat hunting, or vulnerability management. AI systems can autonomously investigate and respond to security incidents, reducing the time and effort required by human analysts.

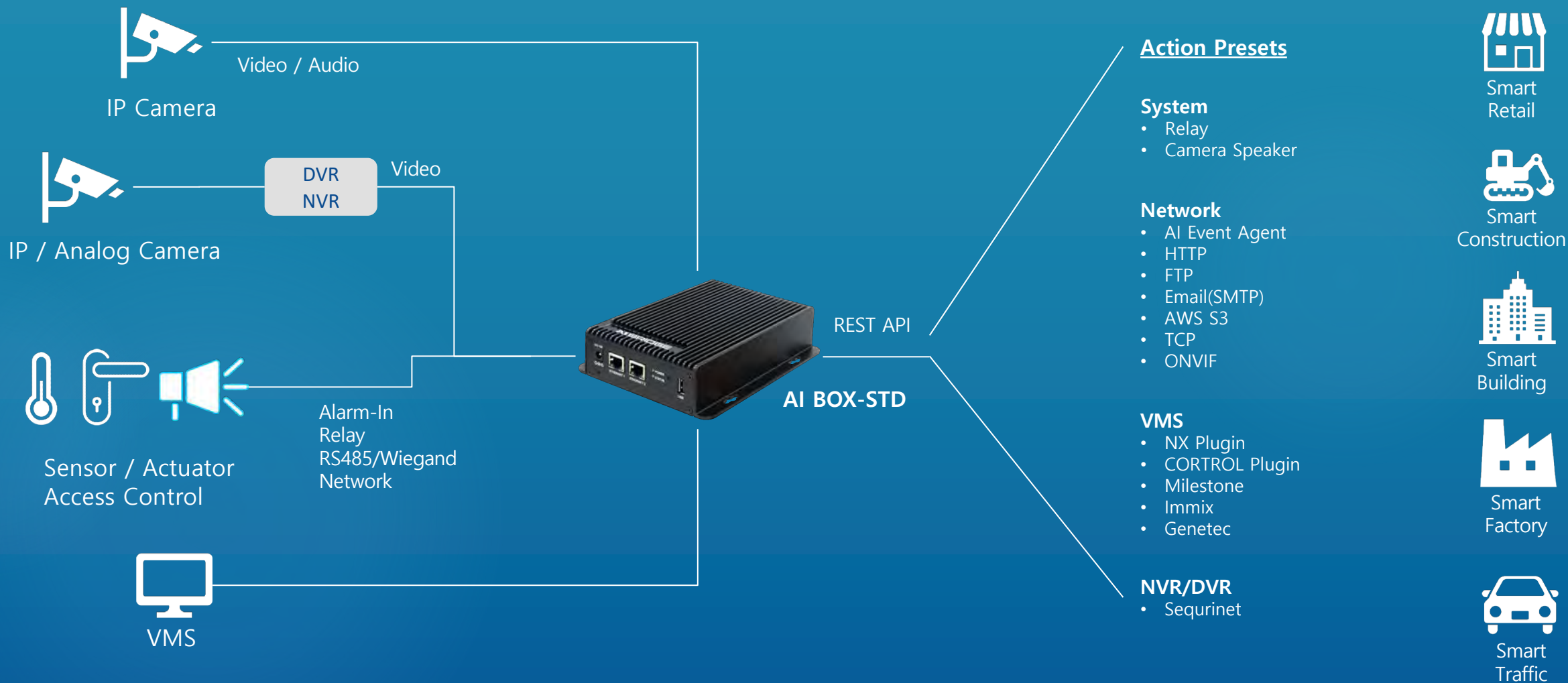
Automated responses can include event notifications, access control lockdowns, or alerting security teams for further investigation.

# Predictive Analytics and Threat Intelligence

# 4

AI can also be used to analyze historical security data and generate predictive analytics. By identifying patterns and correlations, AI models can predict potential future security threats or vulnerabilities.

# AI BOX-STD *The Next Generation of AI Convenience*





# AI BOX-STD *AI Algorithmic Licenses*



**Standard (STD)**  
Included Licensing Package

<b>Standard Package</b>	Dynamic Privacy Masking
	Basic Attribute (Clothing color) <b>Q4</b>
	Queue Management <b>Beta / Q4</b>
	Standard Heatmap <b>Beta / Q4</b>
	Combined Counter Trigger <b>Q4</b>
	Intrusion
	Loitering
	People counting
	Vehicle counting
	Zone counting
	Virtual fence
	Stopping
	Stay & Go
Occupancy ( <i>Number People in a building</i> )	

# AI BOX-STD *AI Algorithmic Licenses*



## Pro License

Optional licensing package

- In addition to the STD licensing package

## Pro Package

Crowd Detection
Advanced Visitor Analysis
Hand & Foot Intrusion
Intentional Body Gaze Detector
Imminent threat
Fallen Person Detection
Animal Detection
Fire & Smoke
Vehicle Type Counting (Bus, Truck, Other Cars)
Thermal Intrusion Detector
Drone View Q4
Fisheye
Corridor Mode Q4
Advanced Attribute (Time) Q4

## Additional Licenses

### Optional add-on licenses

- *Per channel options are available*
- *Bulk channel options are available*
  - *In 2 ~ 8Ch bulk options*

### Channel Add-on Licensing

LPR US, EU, JP, KR
Advanced Heatmap <i>Beta / Q4</i>
No PPE
Illegal Parking <i>Beta / Q4</i>
Illegal Dumping <i>Beta / Q4</i>
Violence Detection <i>Beta / Q4</i>
PTZ Auto Tracking
Human Prolonged Stay <i>Beta / Q4</i>
Abandoned & Removed Object
Forklift Driver No Helmet

# AI BOX-STD 16 Channel extension mode



## 16Ch extension mode

- Extends standard 8Ch's to 16Ch's

## 16Ch extension mode incurred costs

- AI resources are halved
- Standard licensing is reduced
- Pro licensing is inaccessible
- Add-on licensing is inaccessible
- Alarm only (No video)

16Ch available  
AI Applications

Intrusion
Loitering
Virtual Fence
Stay & Go
Stopping Detection
Zone Counting
Occupancy Counting
People Counting
Vehicle Counting



Highly-accurate **object-tracking** technology



High-performance **pose estimation** technology



**Reduce false alarms** through automatic scene understanding



Multi-faceted, multi-level analysis of **detected objects** and video

# AI BOX-STD *Multi-level Analysis of Detected Objects & Video*



- ✓ Analyze video in detail from the top-down
- ✓ Multi-level detailed analysis of detected objects
- ✓ Multiple AI & vision algorithms can be performed simultaneously on each channel



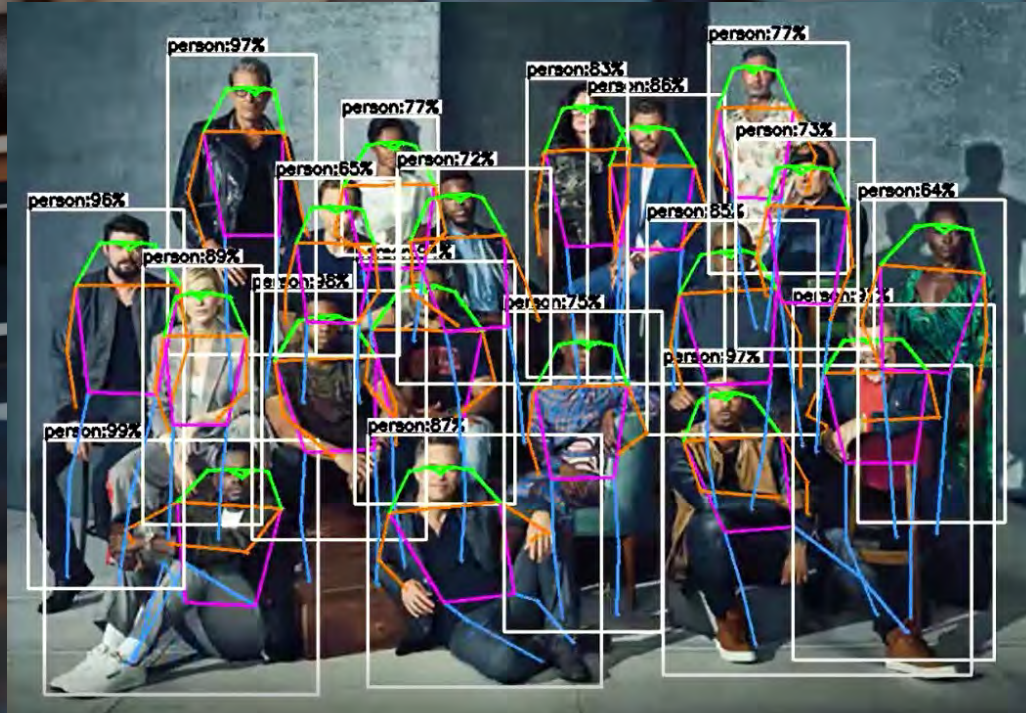
Car detection + LPR + Car attributes

- ✓ Object Detection & Tracking
  - ✓ Pose Estimation
    - ✓ Scene Understanding
      - ✓ Active Privacy Masking
        - ✓ Tamper Detection
          - ✓ Time series event data analysis



Human detection + Human attributes + Privacy masking

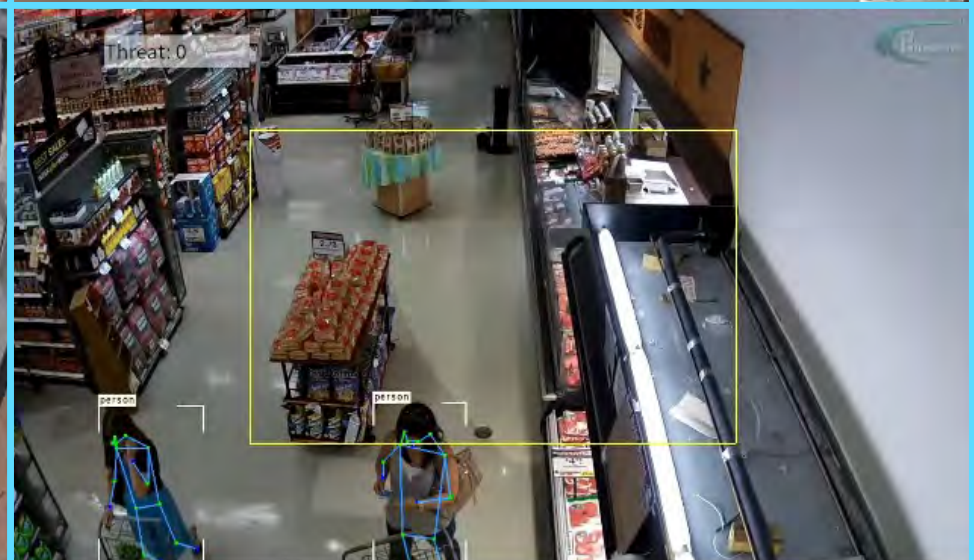
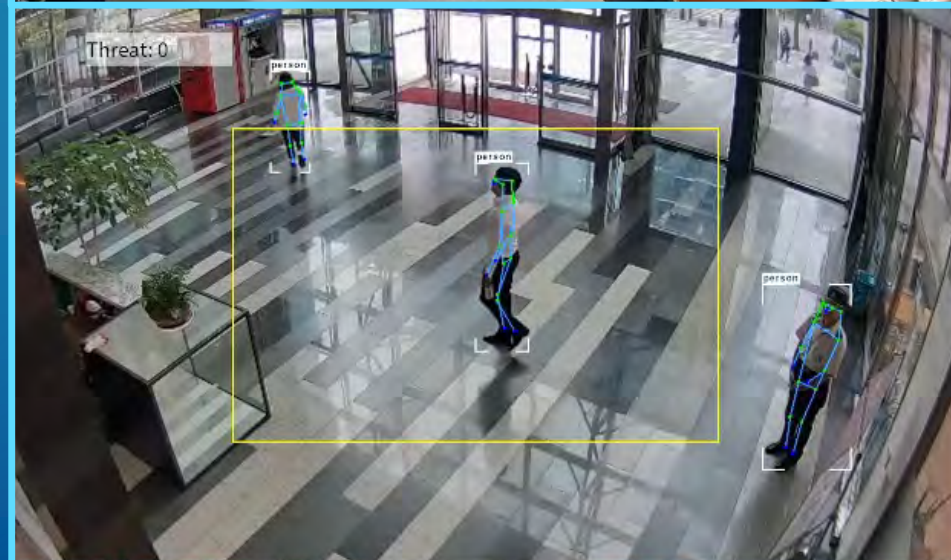
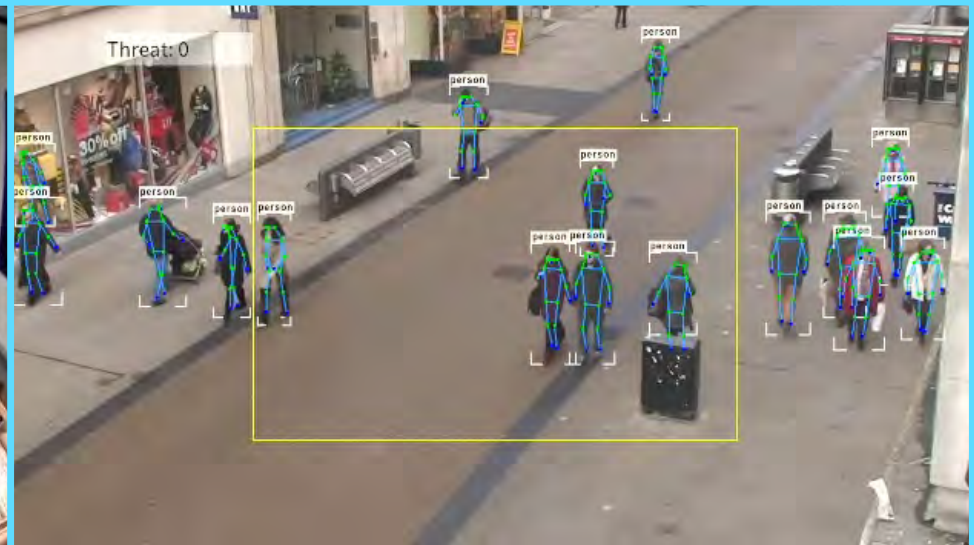
# AI BOX-STD *High-Performance Multi-person Pose Estimation*



- Pose estimation algorithm
- Detects exact body positions
- Detects gazes
- Even when people overlap.

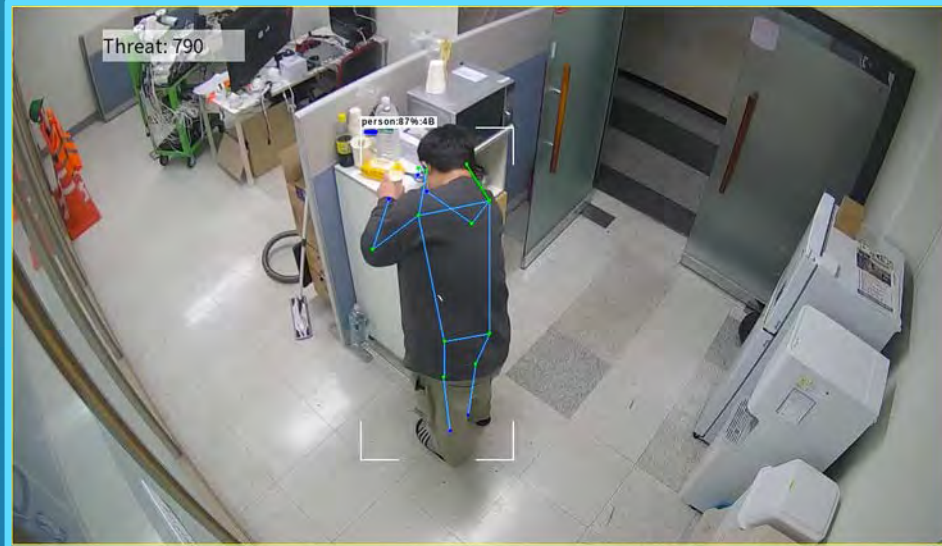
# AI BOX-STD *High-Performance Multi-person Pose Estimation*

- Pose estimation algorithm
- Detects exact body positions
- Detects gazes
- Even when people overlap.

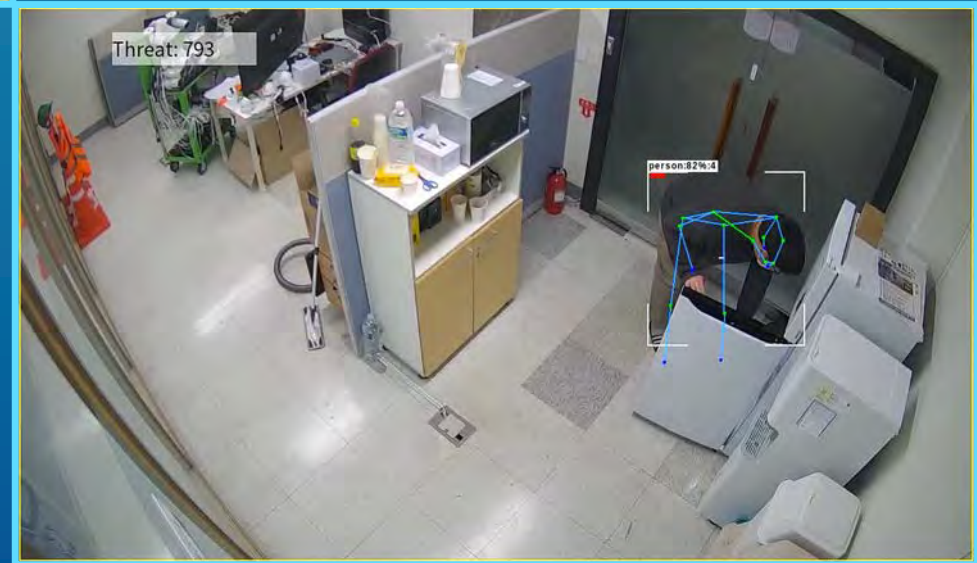




# AI BOX-STD *High-Performance Multi-person Pose Estimation*



- Pose estimation algorithm
- Detects exact body positions
- Detects gazes
- Even when people overlap.



# AI BOX-STD *Intuitive & Easy-to-use AI Applications*




ZN-IBOX-STD | Not secure | #https://192.168.2.117:8443/#/apps

Device 2AD130 | Arm/Disarm | Arm | Video Preview | admin

All (32)


### Intrusion Detection



Detect people in no-entry zones, send notifications, and configure various other actions.

8 CH Licensed | No Rules in Use


### Loitering Person



Detect people loitering in certain areas. It can enhance security by detecting behaves suspiciously.

8 CH Licensed | 2 Rules in Use

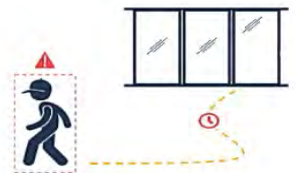
### Virtual Fence



Set up virtual fences near key assets or facilities to monitor at all times and proactively detect intrusion attempts.

8 CH Licensed | No Rules in Use


### Stay & Go



Detect objects that stay in and out of the surveillance zone for more or less than a certain amount of time.

8 CH Licensed | No Rules in Use

### Stopping Detection




Detect people and vehicles that have been stationary for a certain period of time.

8 CH Licensed | No Rules in Use

### Zone Counting


Object count: 3  
Event count: 34




Set up zones and determine real-time occupancy. Events can be set according to the number of people in the zone.

8 CH Licensed | No Rules in Use


### Hand & Foot Intrusion



### Intentional Body Gaze Detector



### Imminent Threat



# AI BOX-STD *Highly-Accurate Object-Tracking Technology*



# AI BOX-STD *Reduce false alarms through automatic scene understanding*



- False alarms may occur when an object that looks like a person is changed by light or wind
- The AI BOX-STD can filter false alarms by observing and understanding the scene



***PAST (48 false alerts)***

***AI BOX-STD (0 false alerts)***



## **Meet the Verticals & the AI Applications that serve them**


- Security Management
- Retail Management
- Construction Site Management

## Intrusion Detection



Detect people in no-entry zones, send notifications, and configure various other actions.

## Loitering Person



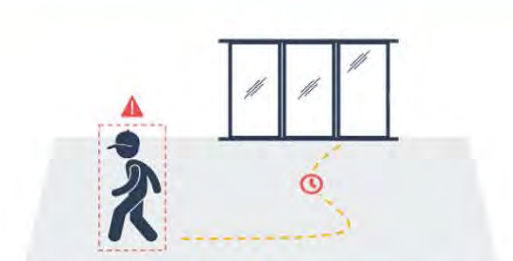
Detect people loitering in certain areas. It can enhance security by detecting behaviors suspiciously.

## Virtual Fence



Set up virtual fences near key assets or facilities to monitor at all times and proactively detect intrusion attempts.

## Stay & Go



Detect objects that stay in and out of the surveillance zone for more or less than a certain amount of time.

## Stopping Detection



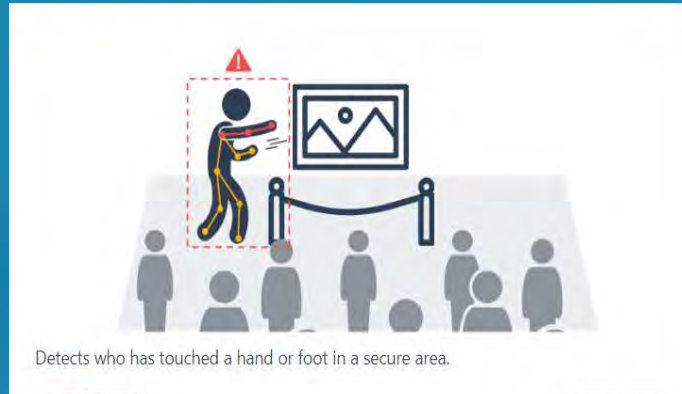
Detect people and vehicles that have been stationary for a certain period of time.

## Zone Counting

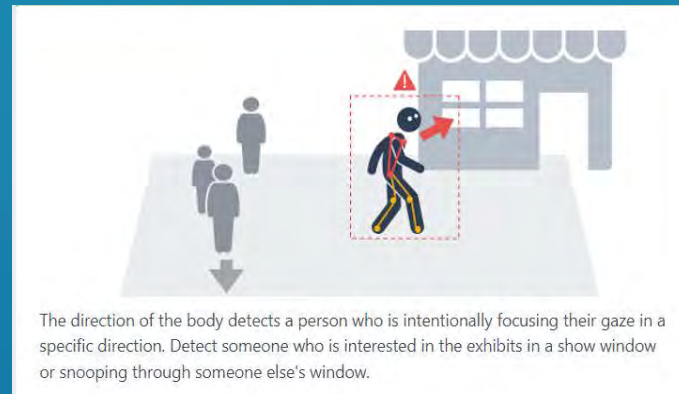


Set up zones and determine real-time occupancy. Events can be set according to the number of people in the zone.

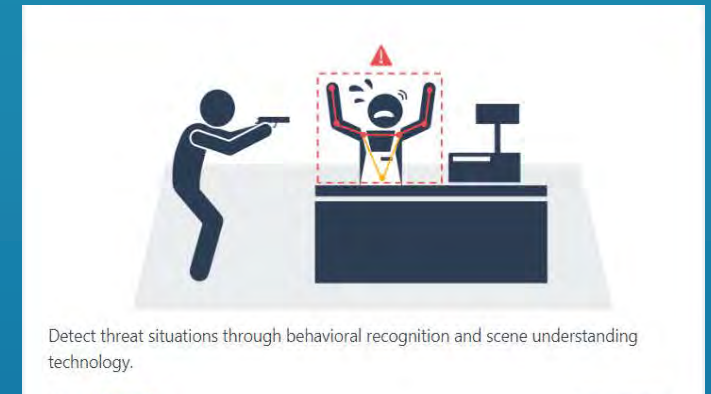
## Hand & Foot Intrusion



## Intentional Body Gaze



## Imminent Threat



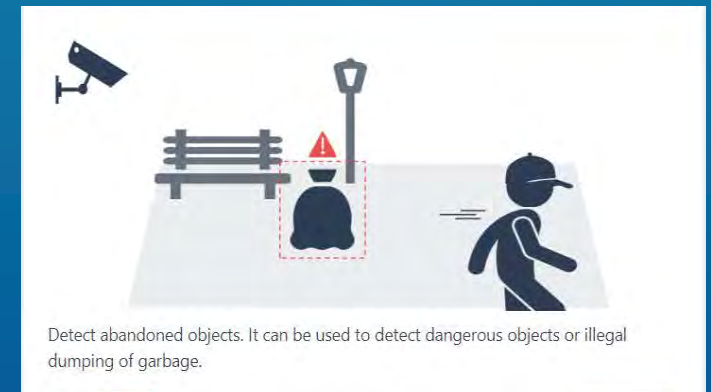
## Bullying Detection



## Violence Detection



## Illegal Dumping

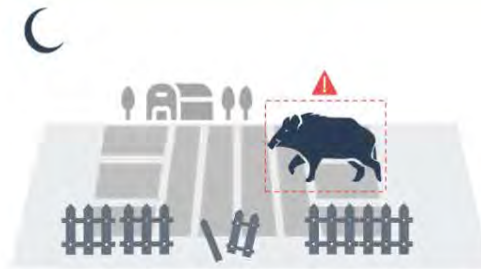


## Thermal Intrusion Detection



Dedicated human detection using advanced thermal imaging.

## Animal Detection



Detect animals suddenly appearing in surveillance area. Reduce property damage caused by animals.

## Vehicle Counting



The number of passing vehicles can be counted. Combined counting of passing vehicles from multiple channels.

## Dynamic Privacy Masking



Masks everyone except the person for whom the event was detected.

## Illegal Parking



Detect illegally parked vehicles. Even if the target vehicle is temporarily obscured by passing traffic, it can still be detected.

## Human Prolonged Stay



Detect homeless people, people begging in one place, people staying in one place with bad intentions such as robbery, or people staying in one place for a long time for a specific purpose, such as handing out brochures



### LPR-US



### LPR-EU



### LPR-JP



### LPR-KR



## Intrusion Detection



Detect people in no-entry zones, send notifications, and configure various other actions.

## Loitering Person



Detect people loitering in certain areas. It can enhance security by detecting behaviors suspiciously.

## Zone Counting




Set up zones and determine real-time occupancy. Events can be set according to the number of people in the zone.

## Hand & Foot Intrusion




Detects who has touched a hand or foot in a secure area.

## Intentional Body Gaze



The direction of the body detects a person who is intentionally focusing their gaze in a specific direction. Detect someone who is interested in the exhibits in a show window or snooping through someone else's window.

## Imminent Threat



Detect threat situations through behavioral recognition and scene understanding technology.

## Occupancy Counting



Calculates the number of people in the building by adding up entry and exit counts.

## People Counting



Counts the floating population of a major area or counts the floating population of multiple areas by summing up.

## Dynamic Privacy Masking



Masks everyone except the person for whom the event was detected.

## Vehicle Counting



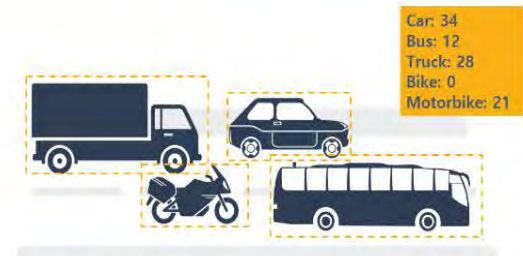
The number of passing vehicles can be counted. Combined counting of passing vehicles from multiple channels.

## Advanced Visitor Analysis



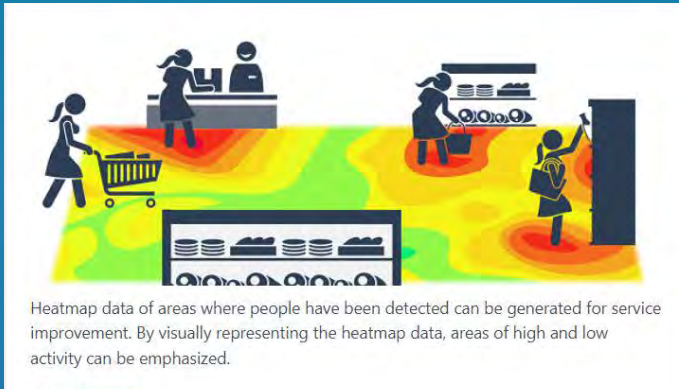
Identify the gender distribution of customers. This will help you determine the types of products, placements, and purchases, as well as the types of customers you need to develop.

## Vehicle Type Counting

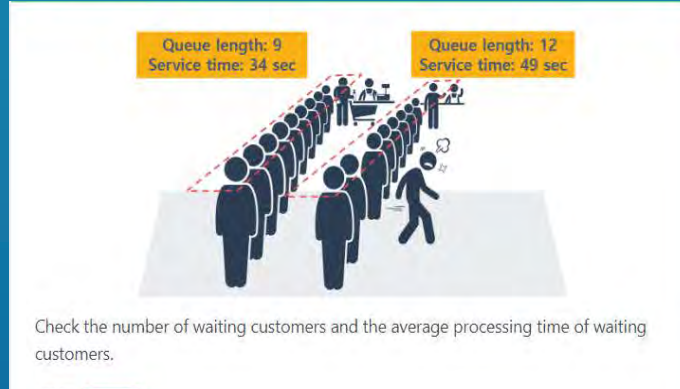


Cars, trucks, buses, bikes, and motorbikes can be counted by type. You can count by summing the number of vehicles by type in multiple channels.

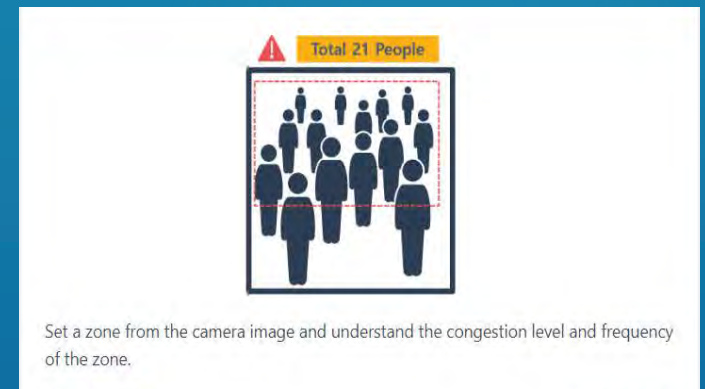
## Heatmap



## Queue Management



## Crowd Detection



## Intrusion Detection



Detect people in no-entry zones, send notifications, and configure various other actions.

## No PPE




Recognizes non-wearing safety equipment in the surveillance area and sends a warning message to the non-wearing safety equipment or manager.

## Fallen Person Detection



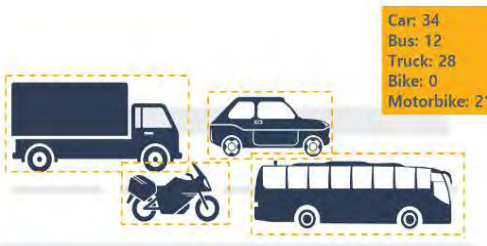
Real-time recognition of a fall and rapid propagation of an emergency can minimize human casualties.

## Loitering Person



Detect people loitering in certain areas. It can enhance security by detecting behaviors suspiciously.


## Vehicle Type Counting



Car:	34
Bus:	12
Truck:	28
Bike:	0
Motorbike:	21

Cars, trucks, buses, bikes, and motorbikes can be counted by type. You can count by summing the number of vehicles by type in multiple channels.

## Crowd Detection



Set a zone from the camera image and understand the congestion level and frequency of the zone.

Q & A

**THANK YOU!**

[ganzsecurity.com/aibox](https://ganzsecurity.com/aibox)