

Changing the colour of Hot-Spots

Once you have Hot-Spots added as a layer to your project you can use the **Hot-Spot Panel** to control the appearance of the layer, as well as the data associated with it. The following instructions will give you a step by step guide on how to change the colour and reclassifying your Hot-Spots in SKiN based on a column in your data. This is particularly useful if you wish to modify the way by which your data is displayed on the map, for example to indicate a particular trend, identify areas of opportunity or view the spatial distribution of high and low values.

Before you begin

Before you start styling your Hot-Spots, make sure that you have the data set up in a saved project. If you need assistance getting the data into SKiN please refer to the following sections:

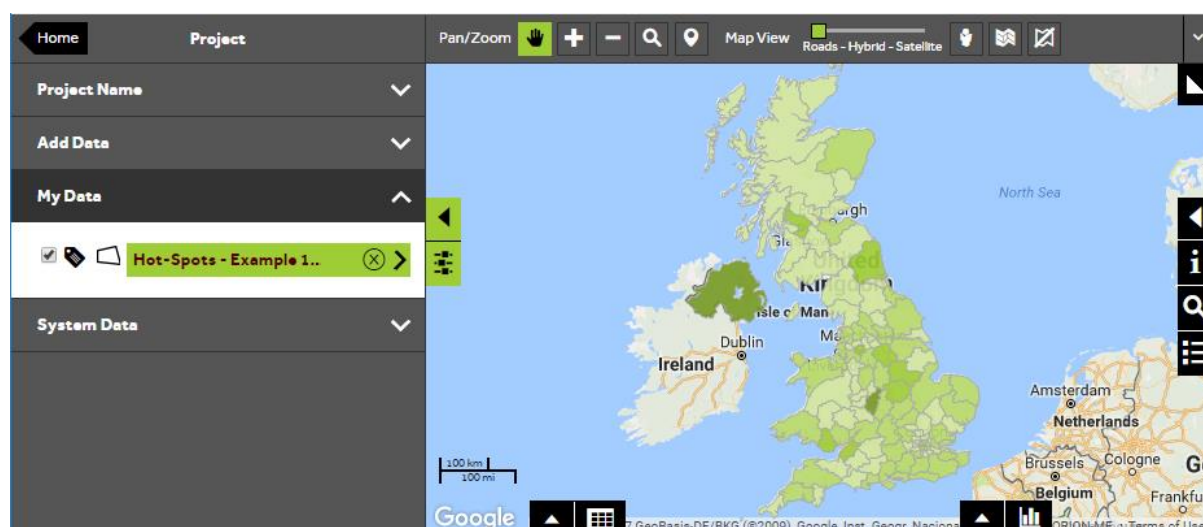
- Hot-Spot Steps - Create Project
- Hot-Spot Steps - Import Data
- Hot-Spot Steps - Add Existing Layer



1 of 9

Style a Hot-Spot layer

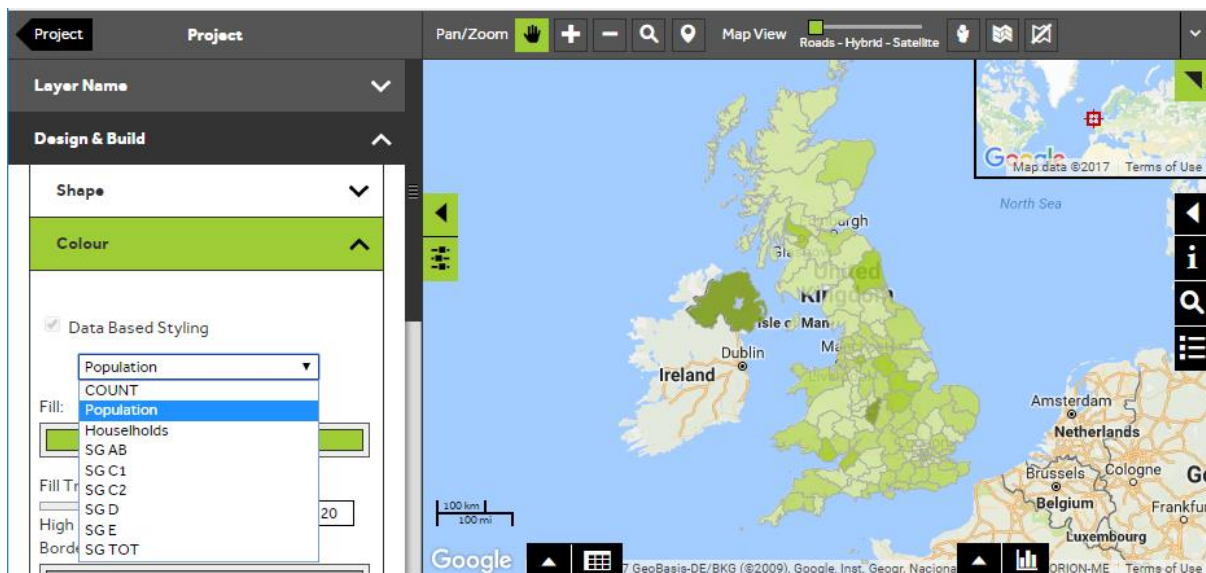
- To style your own data, **Open an existing project** and then select **My Data**, click on the layer you wish to style.



2 of 9

Choose a column

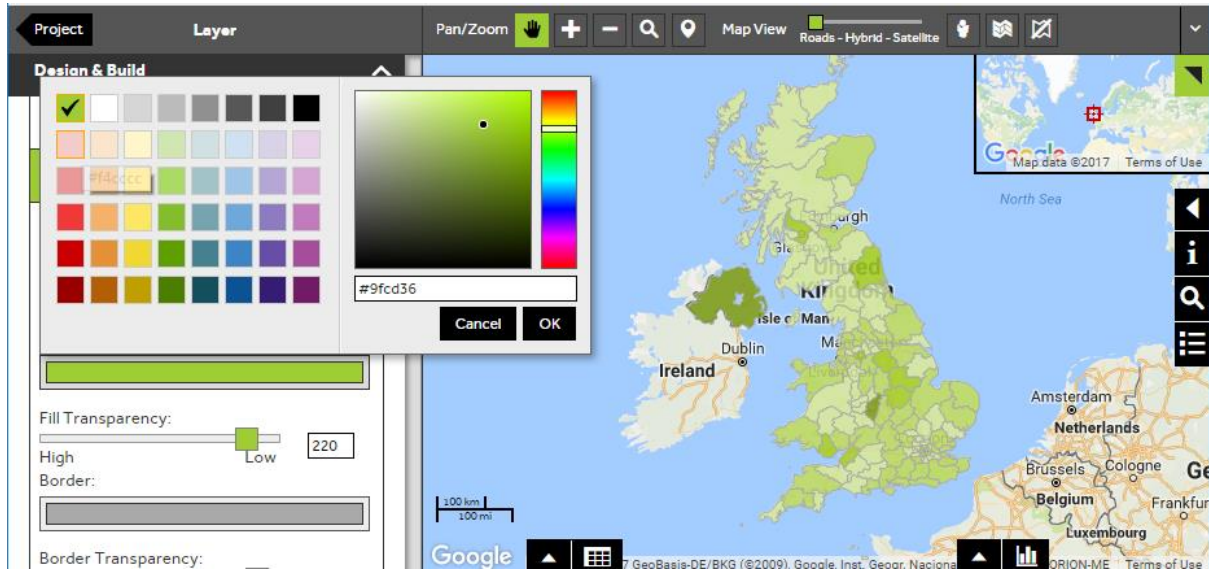
- Within the layer editor panel select **Design and Build**, from here you can control how the Hot-Spots are displayed. Expand the **Colour** selection panel.
- Choose a **column** from the Data Based Styling dropdown which will be used to classify the records in your layer. All of the columns in your layer will be available.
- When you have selected the column of data, the map will automatically update to reflect the change made to the layer.



3 of 9

Select a fill colour

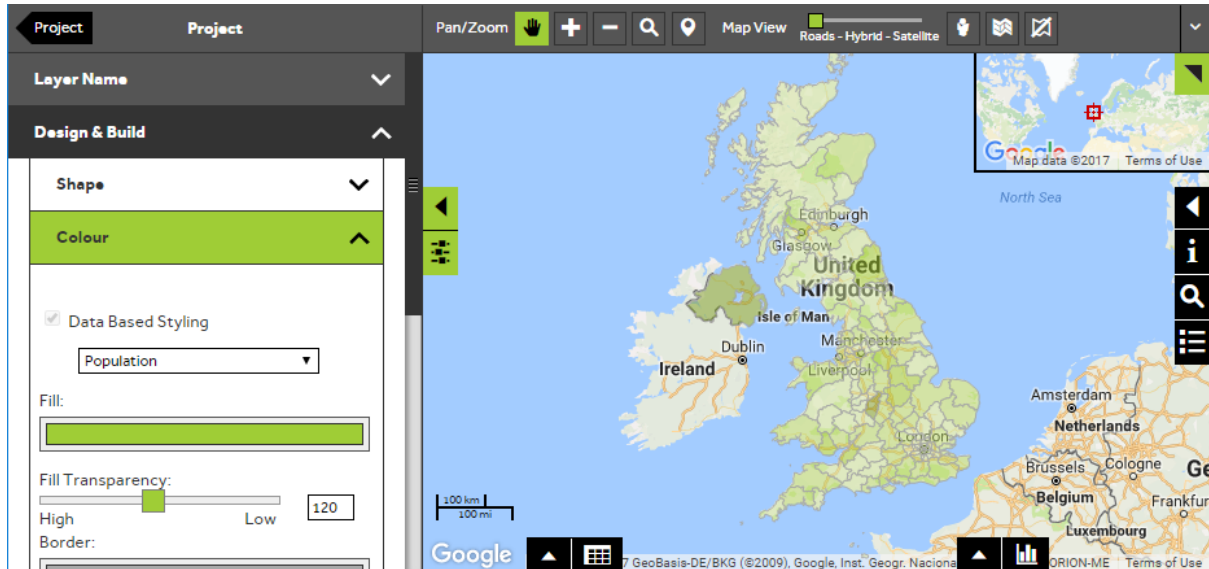
- To change the colour of your Hot-Spots based on a column within your data, click in the coloured box next to **Fill** and select the required colour from the palette. The Hot-Spots will automatically update.



4 of 9

Change the fill transparency

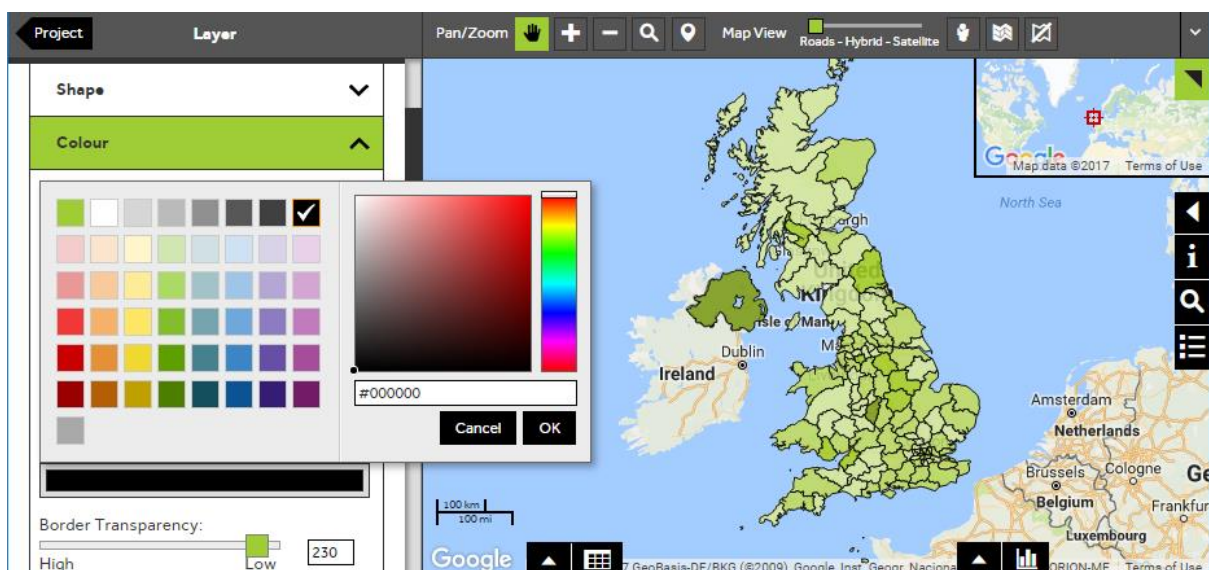
- You can change the level of transparency of your Hot-Spot fill colour by clicking and dragging the bar underneath **Fill Transparency**. If you want your Hot-Spots to be very transparent, so that you can see features underneath the Hot-Spots, drag the bar towards the **High** end of the bar. To make your Hot-Spots more opaque, drag the bar towards the **Low** end.



5 of 9

Change the border colour

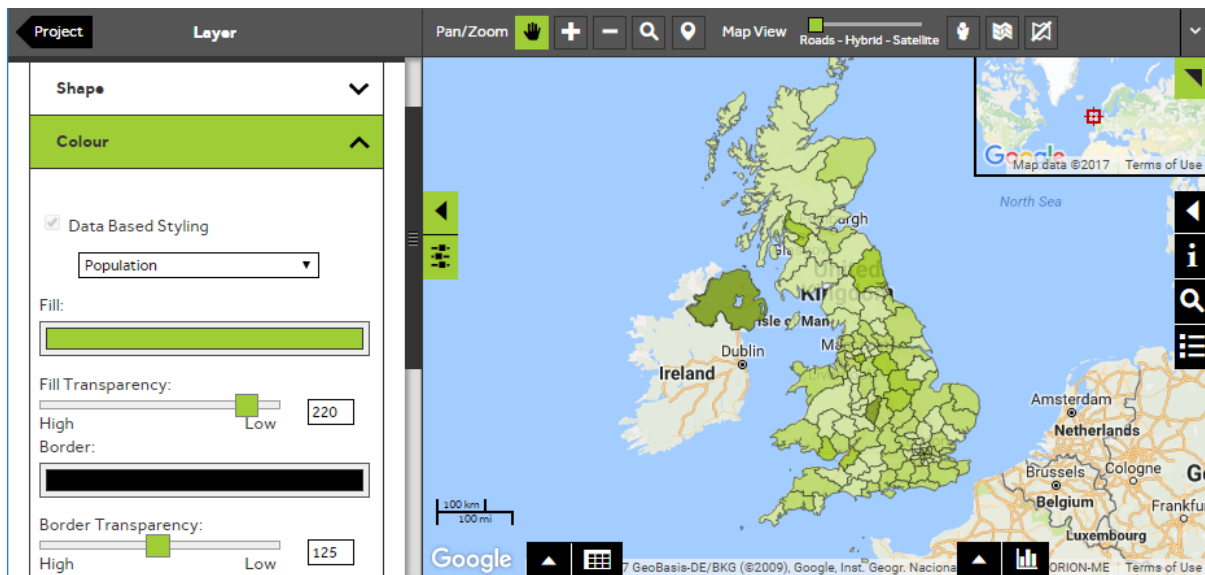
- You can change the colour of the border of your Hot-Spots by clicking in the coloured box next to **Border** and selecting the required colour from the palette.



6 of 9

Change the border transparency

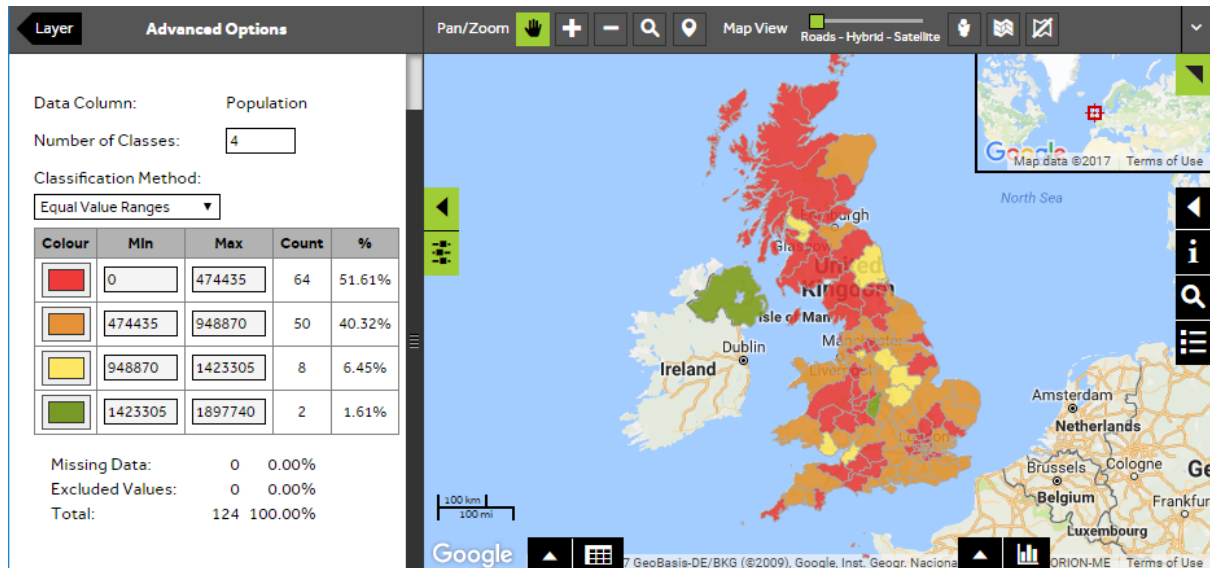
- You can change the transparency of the border colour of your Hot-Spots in the same way as the **Fill** colour, by clicking and dragging the bar underneath **Border Transparency**. If you want your Hot-Spot borders to be very transparent so that you can see features underneath the Hot-Spots drag the bar towards the **High** end of the bar. To make your Hot-Spot borders more opaque drag the bar towards the **Low** end.



7 of 9

Modify Advanced Options to change colours

- You can make changes to the way in which the data based styling is displaying the data through **Advanced Options**. You can assign specific colours by clicking on the colour next to each value.



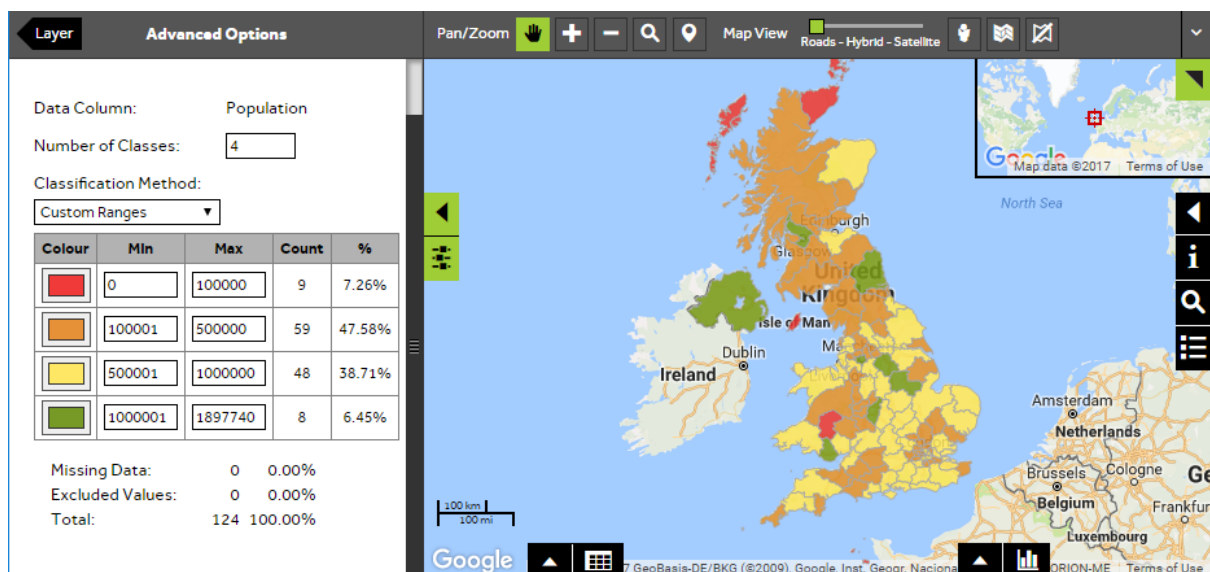
Modify Advanced Options to change number values

- For numeric columns, you can also change the number of classes the data is split into, and the method by which the data is assigned to each class:

Equal Value Ranges – Your data is grouped into same sized range values. Equal Value range maps are easy to interpret and are good for visualising uniform distribution and continuous data. It is not an appropriate classification method where the data is clustered around only a few values.

Equal Class Counts – Your data is grouped so each will contain an equal category which will have the same number of records.

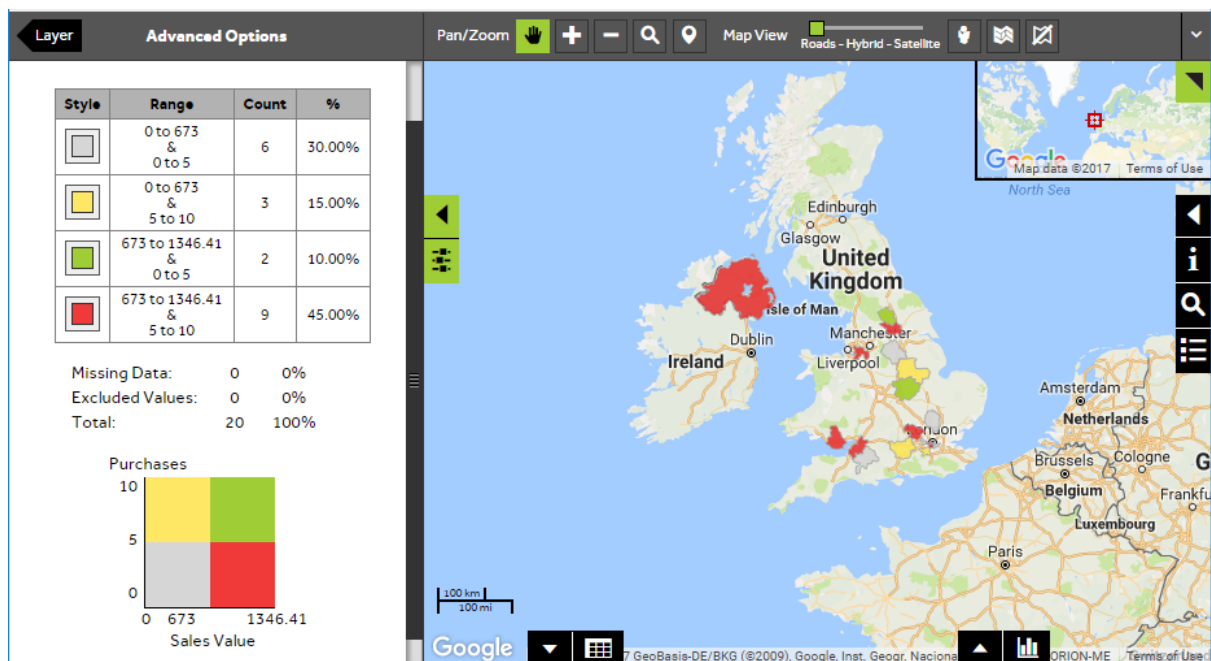
Custom Ranges – You will be able to set the range values of each class. This can be useful if you wish to round numbers e.g. 5000 – 10,000 or map the data according to specific KPIs.



9 of 9

Apply Bivariate Mapping

- If you tick the Bivariate option in the Colour section, you can choose a second column to compare to the first. If the Bivariate option is ticked, the **Advanced Options** shows the classes as pre-defined, though it does allow you to change the colours assigned to each class.
- In the example below, the yellow areas on the map will indicate where the value for 'Purchases' is above average and the 'Sales' value is below average. The red areas will indicate where the value for 'Purchases' is below average and the 'Sales' value is above average, and so on.



What do you want to do next?

You may wish to change the label of your Hot-Spots or you may wish to filter your Hot-Spots to show specific number ranges only. Please refer to the following sections for further assistance:

- Refer to: **Hot-Spot Steps - Style Layer - Labels**
- Refer to: **Hot-Spot Steps - Filter Data**
- Refer to: **Hot-Spot Panel** (help guide)
- Contact: **Geoplan Support**