

## Changing the label of Catchments

Once you have Catchments added as a layer to your project you can use the **Catchments Panel** to control the appearance of the layer, as well as the data associated with it. The following instructions will give you a step-by-step guide on how to switch on/off Catchment labels, how to change the labels that are displayed and how to add additional labels.

### Before you begin

Before you start styling your Catchments, make sure that you have your data set up in a saved project. If you need assistance getting the data into SKiN please refer to the following sections:

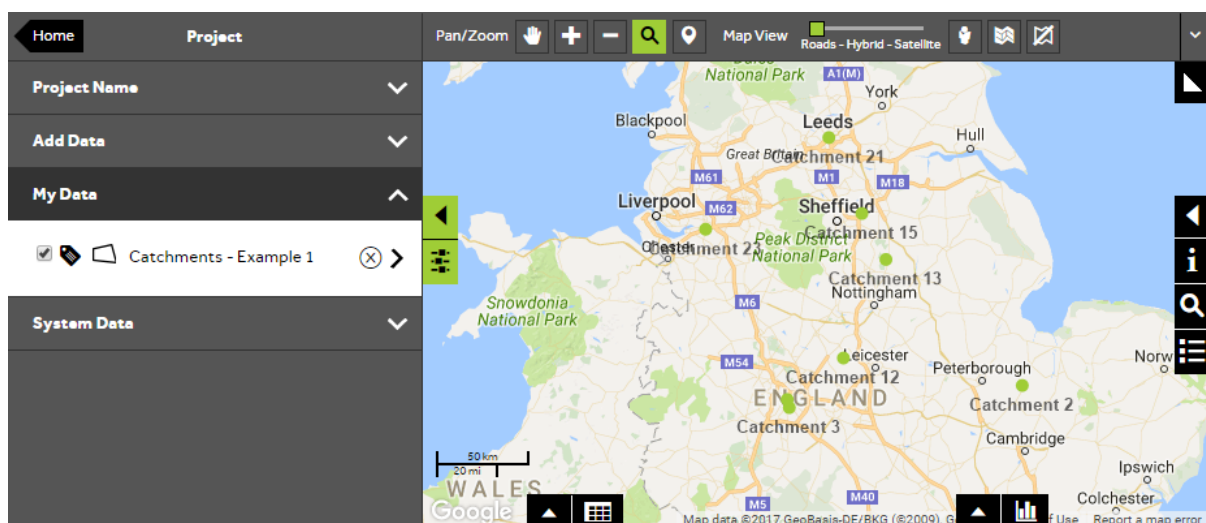
- Catchments Steps - Create Project
- Catchments Steps - Import Data



1 of 8

### Switch on Catchments layer labels

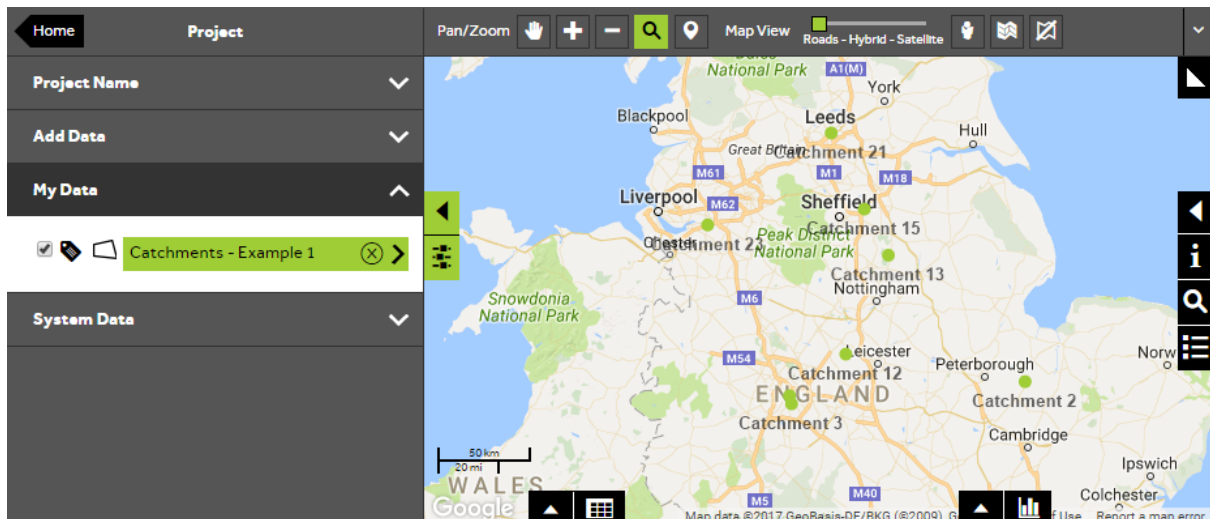
- To switch on your Catchment layer labels, **Open an existing project** and then select **My Data**, click on the label icon which can be found to the left of your Catchments layer name. The Catchment labels will then be displayed.



2 of 8

## Style a Catchments layer

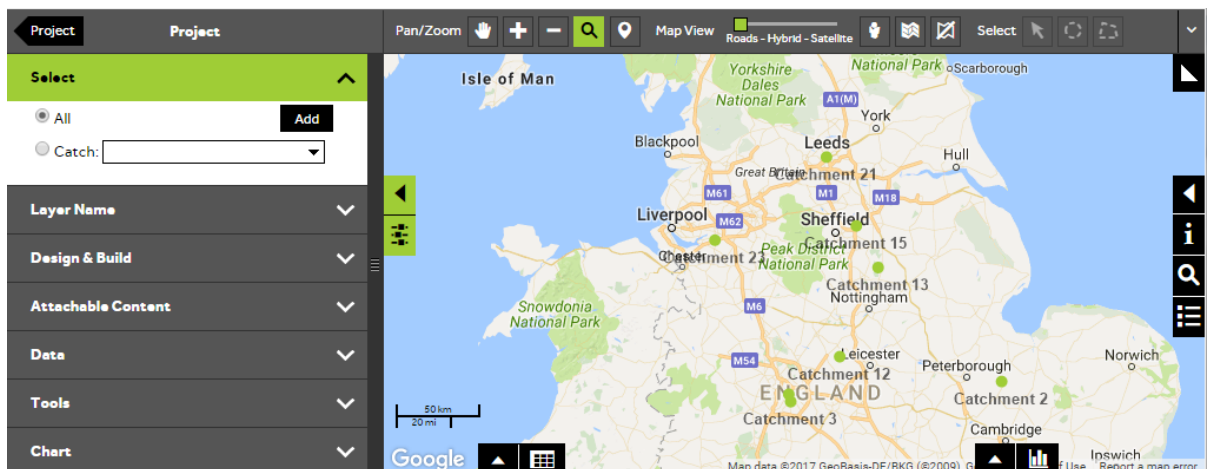
- To style your layer, open the layer editor by clicking on the name of the Catchments layer that you want to change.



3 of 8

## Select Catchments to update

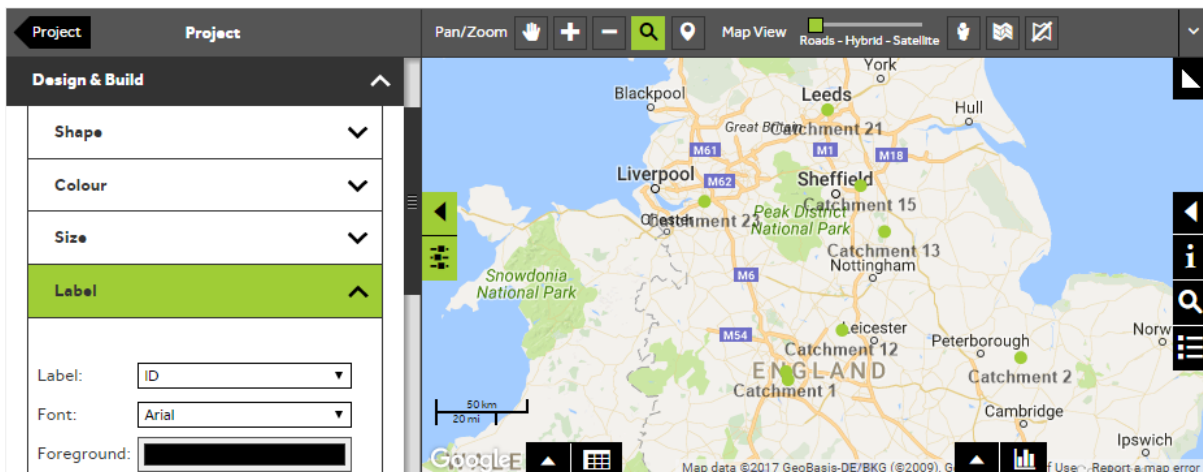
- In the **Select** section of the panel, you can control whether to update all Catchments in the layer or just a single Catchment. To update all Catchments, make sure that the **All** button is selected. To select an individual Catchment, click on the **Catch** button, then start to type the Catchment Identifier in the text box and select the required Catchment from the drop down list.



4 of 8

## Select the label panel

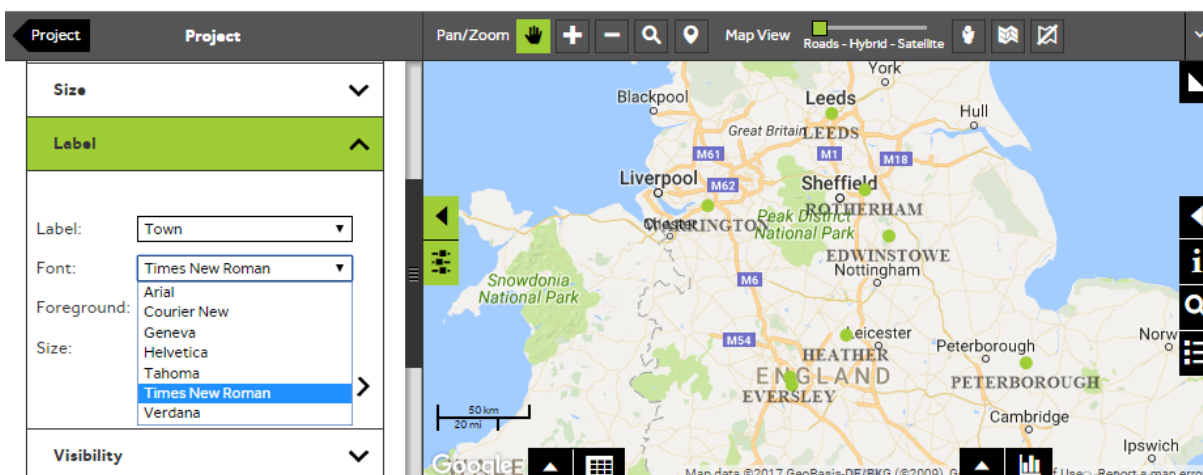
- Within the layer editor panel select **Design and Build**, from here you can control how the Catchments are displayed, expand the **Label** selection panel.



5 of 8

## Change the label and font

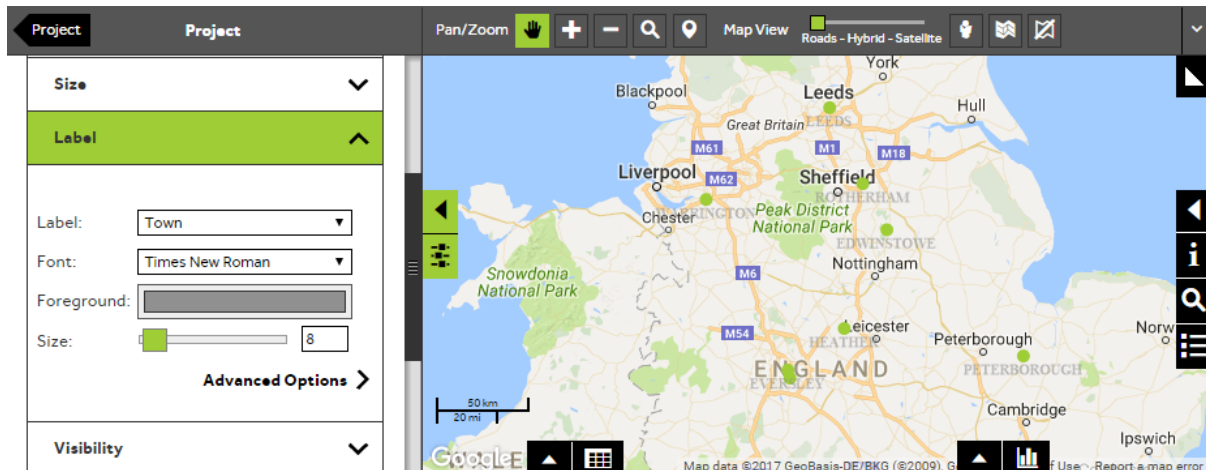
- To change the label to another column from your data, select the required column from the **Label** dropdown list and to change the Font select the required font from the **Font** dropdown list.



6 of 8

## Change the label colour and size

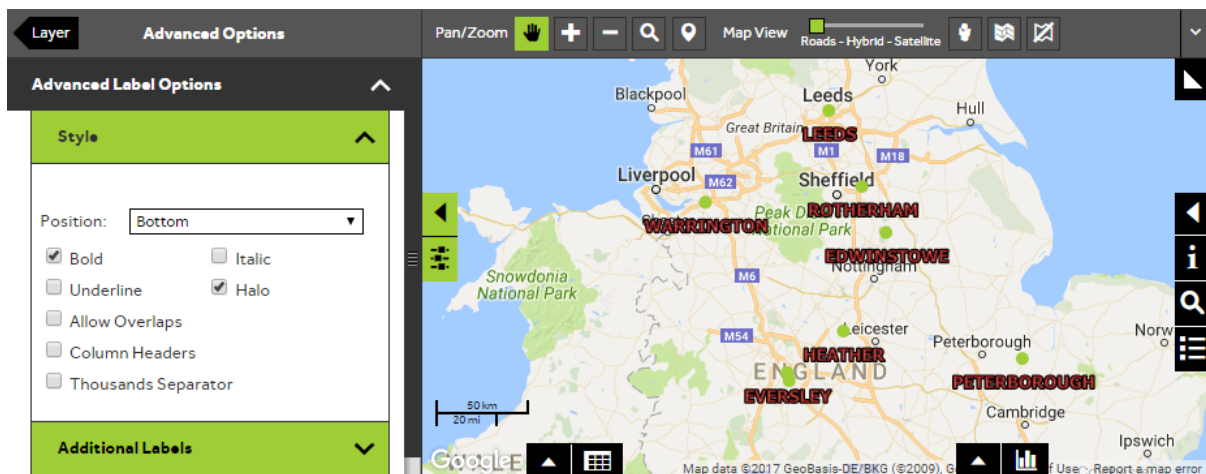
- You can change the colour of the label by clicking in the coloured box next to **Foreground** and selecting a colour from the palette. To change the size of the labels, click and drag the **Size** bar until it shows the required size or type in a size in the number box.



7 of 8

## Use advanced options to change labels

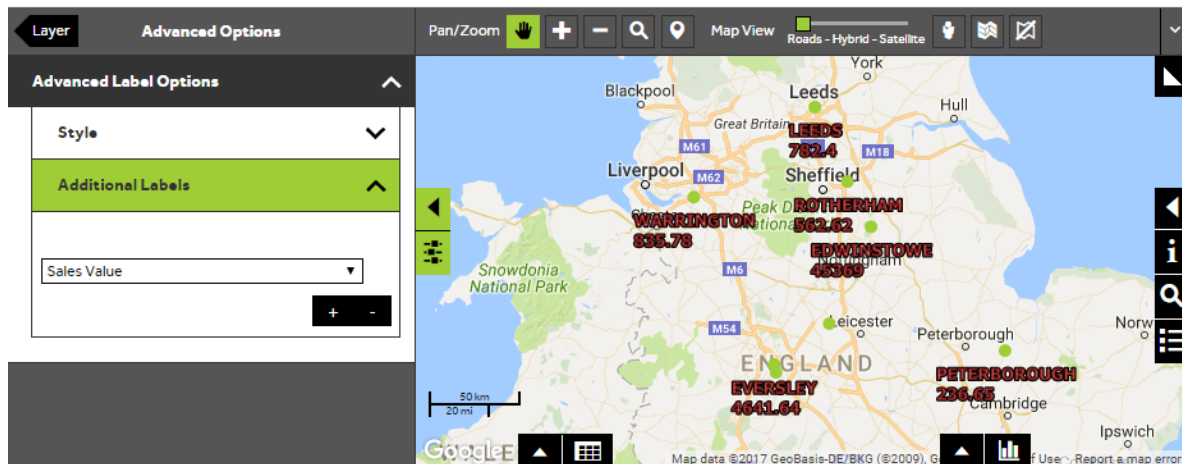
- You can make changes to the way in which the labels are displayed through **Advanced Options**. To change the position of the label select one of the options in the **Position** dropdown box. There are several other options for styling your label which can be ticked or unticked as required.



8 of 8

## Add additional labels

- You can add additional labels by opening the **Additional Labels** section and selecting a data column from the dropdown list. The additional labels will appear on the map automatically. To add further additional labels, press the **+** button.



## What do you want to do next?

You may wish to change the colour of your Catchments or change the name of your Catchments layer. Please refer to the following sections for further assistance:

- Refer to: **Catchments Steps – Style Layer – Colour**
- Refer to: **Catchments Steps - Style Layer - Layer Name**
- Contact: **Geoplan Support**