

Changing the colour of Catchments

Once you have Catchments added as a layer to your project you can use the **Catchments Panel** to control the appearance of the layer, as well as the data associated with it. The following instructions will give you a step-by-step guide on how to change the colour of all your Catchments as a single colour and also how to colour your Catchments based on a column in your data.

Before you begin

Before you start styling your Catchments, make sure that you have the data set up in a saved project. If you need assistance getting the data into SKiN please refer to the following sections:

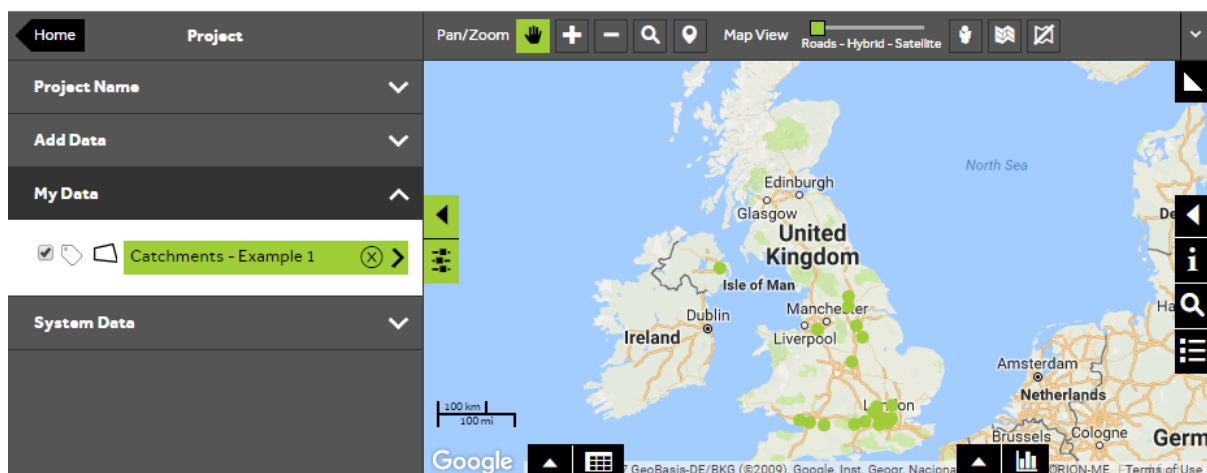
- Catchments Steps – Create Project
- Catchments Steps – Import Data



1 of 10

Style a Catchment layer

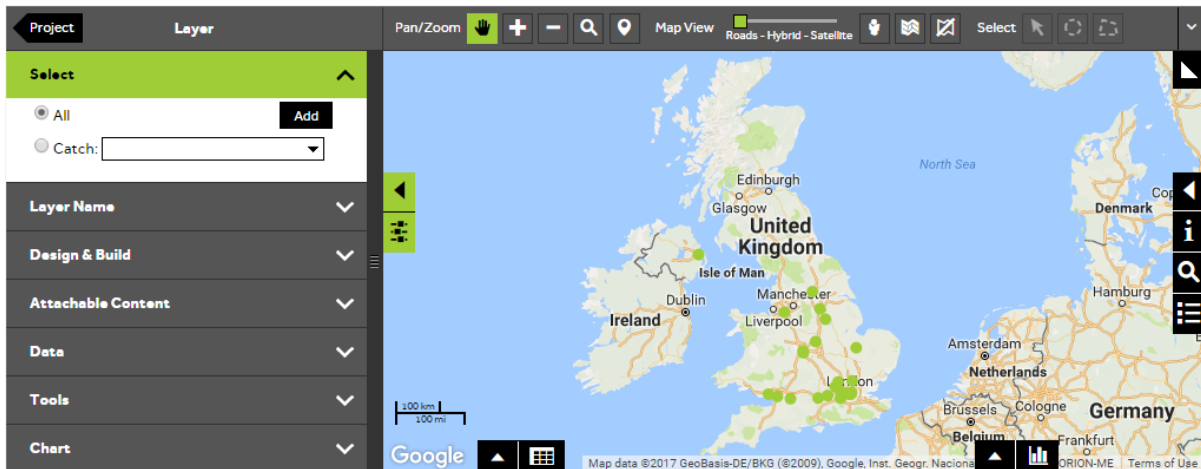
- To style your own data, **Open an existing project** and then select **My Data**, click on the catchment layer you wish to style.



2 of 10

Select Catchments to update

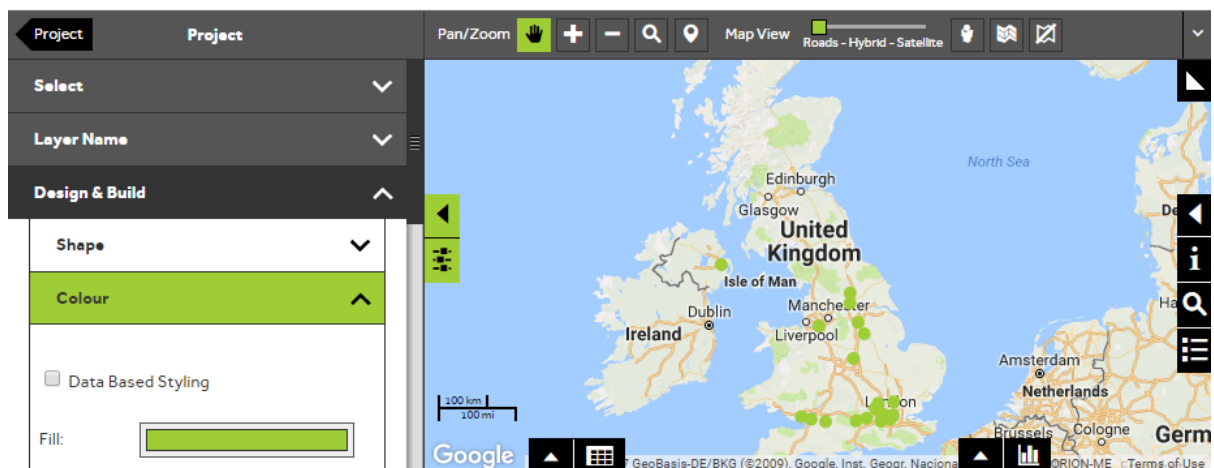
- In the **Select** section of the panel, you can control whether to update all Catchments in the layer or just a single Catchment. To update all Catchments, make sure that the **All** button is selected. To select an individual Catchment, click on the **Catch** button, then start to type the Catchment Identifier in the text box and select the required Catchment from the drop down list.



3 of 10

Select the colour panel

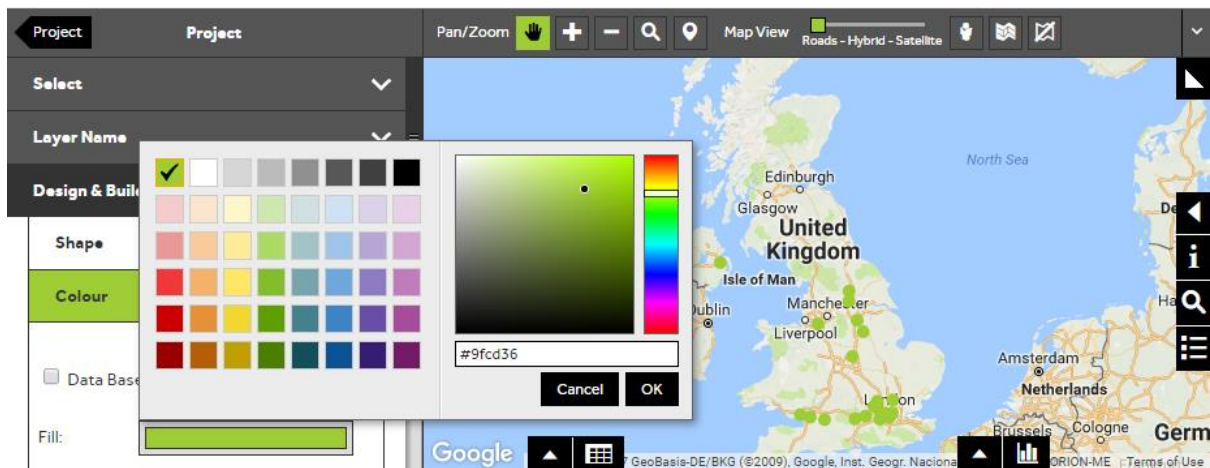
- Within the layer editor panel select **Design and Build**, from here you can control how the Catchments are displayed. Expand the **Colour** section to choose a single colour to apply to the Catchment(s).



4 of 10

Select a new colour

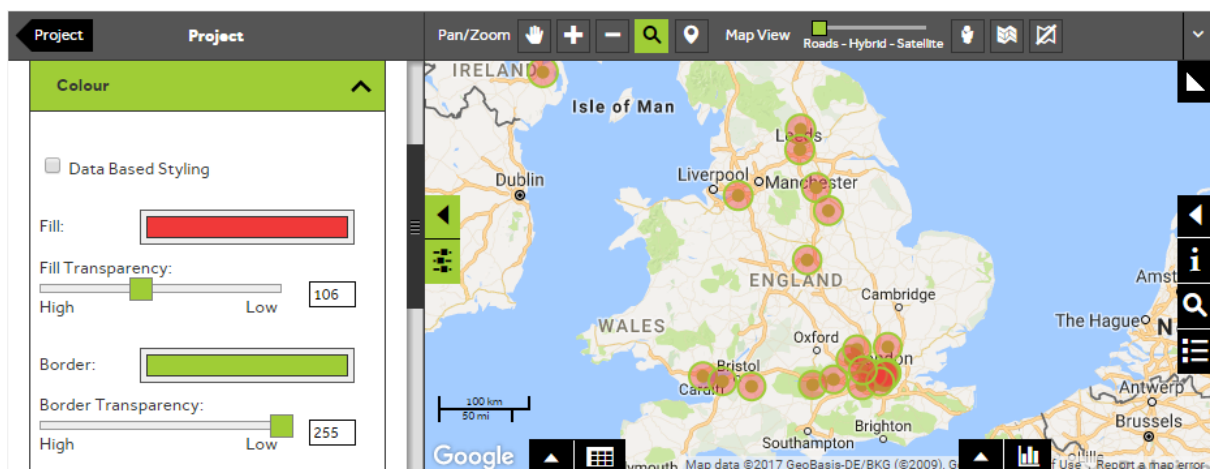
- To change all your Catchments with the same colour, click in the coloured box next to **Fill** and select the required colour from the palette. The Catchments will automatically update.



5 of 10

Change the transparency

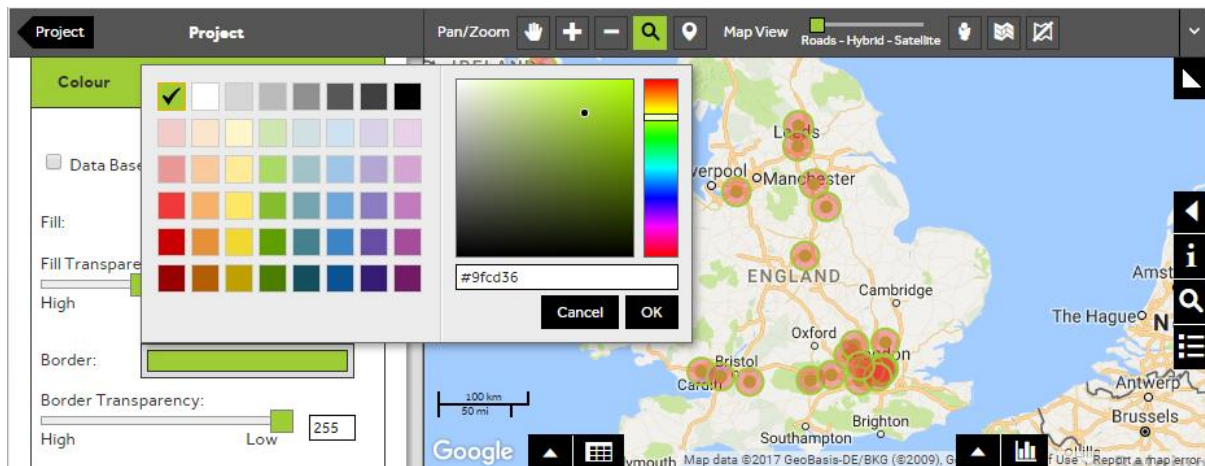
- You can change the level of transparency of your Catchment colour by clicking and dragging the bar underneath **Fill Transparency**. If you want your Catchments to be very transparent so that you can see features underneath the catchments drag the bar towards the **High** end of the bar. To make your Catchments more opaque, drag the bar towards the **Low** end.



6 of 10

Change the Catchment border colour

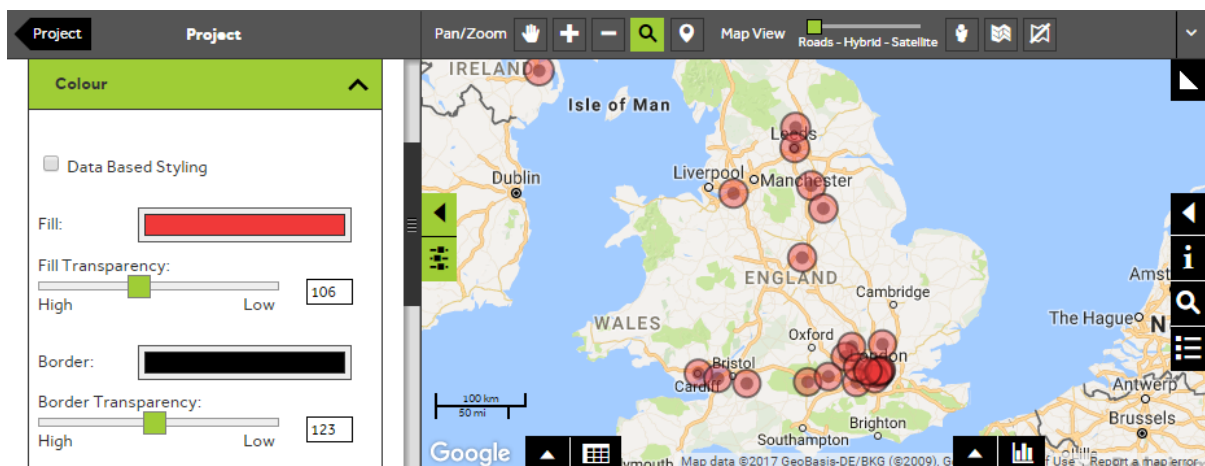
- You can change the colour of the border of your Catchments by clicking in the coloured box next to **Border** and selecting the required colour from the palette.



7 of 10

Change the border transparency

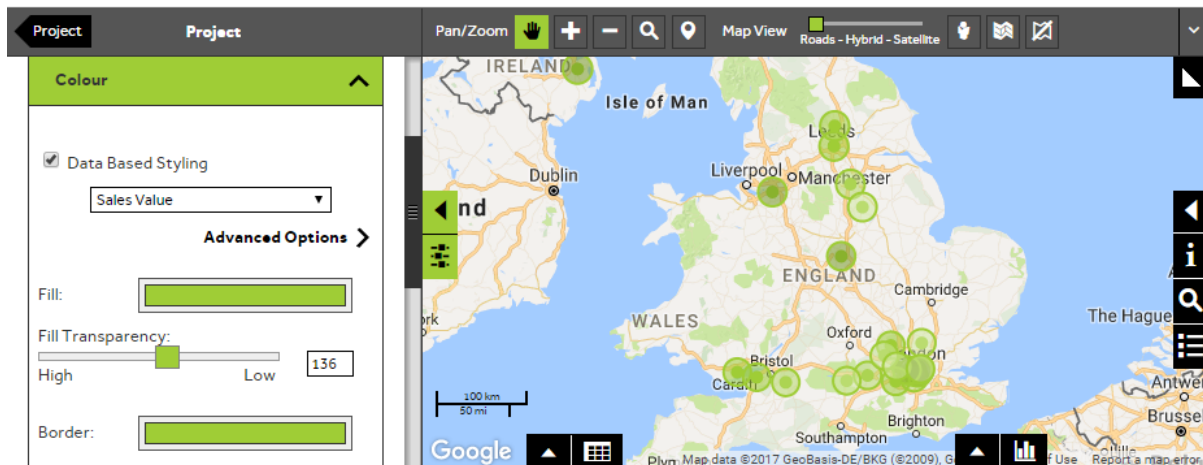
- You can change the transparency of the border colour of your Catchments in the same way as the **Fill** colour, by clicking and dragging the bar underneath **Border Transparency**. If you want your catchment borders to be very transparent so that you can see features underneath the Catchments drag the bar towards the **High** end of the bar. To make your Catchment borders more opaque drag the bar towards the **Low** end.



8 of 10

Choose a column to style your Catchments

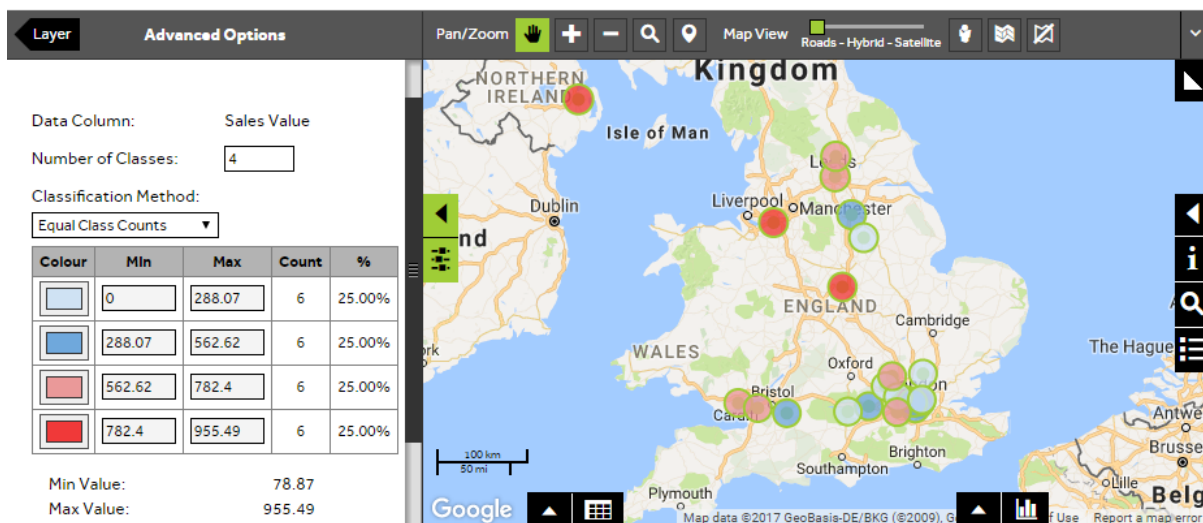
- To change the colour of your Catchments based on a column within your data, tick the box next to **Data Based Styling**. Click on the dropdown box to select a column to classify the records in your layer on. When you have selected the column of data the map will automatically update to reflect the change made to the layer.



9 of 10

Use Advanced Options to change colours

- You can make changes to the way in which the data based styling is displaying the data through **Advanced Options**. You can assign specific colours by clicking on the colour next to each value.



Use Advanced Options to change number values

- For numeric columns, you can also change the number of classes the data is split into, and the method by which the data is assigned to each class:

Equal Value Ranges – Your data is grouped into same sized range values. Equal Value range maps are easy to interpret and are good for visualising uniform distribution and continuous data. It is not an appropriate classification method where the data is clustered around only a few values.

Equal Class Counts – Your data is grouped so each will contain an equal category which will have the same number of records.

Custom Ranges – You will be able to set the range values of each class. This can be useful if you wish to round numbers e.g. 5000 – 10,000 or map the data according to specific KPIs.

To return to the colour panel click on the **Layer** arrow.

Data Column: Sales Value

Number of Classes: 4

Classification Method: Equal Value Ranges

Colour	Min	Max	Count	%
	0	238.9	4	16.67%
	238.9	477.7	7	29.17%
	477.7	716.6	3	12.50%
	716.6	955.5	10	41.67%

Min Value: 78.87
Max Value: 955.49

What do you want to do next?

You may wish to attach photos or documents to your Catchments or you find out which features fall within your Catchments, please refer to the following sections for further assistance:

- Refer to: **Catchment Steps - Attach Content**
- Refer to: **Catchment Steps - What's in My Catchments?**
- Contact: **Geoplan Support**