

Changing the name of a Catchment

Once you have Catchments added as a layer to your project you can use the **Catchments Panel** to control the appearance of the layer, as well as the data associated with it. The following instructions will give you a step-by-step guide on how to change the name of a Catchment in your layer.

Before you begin

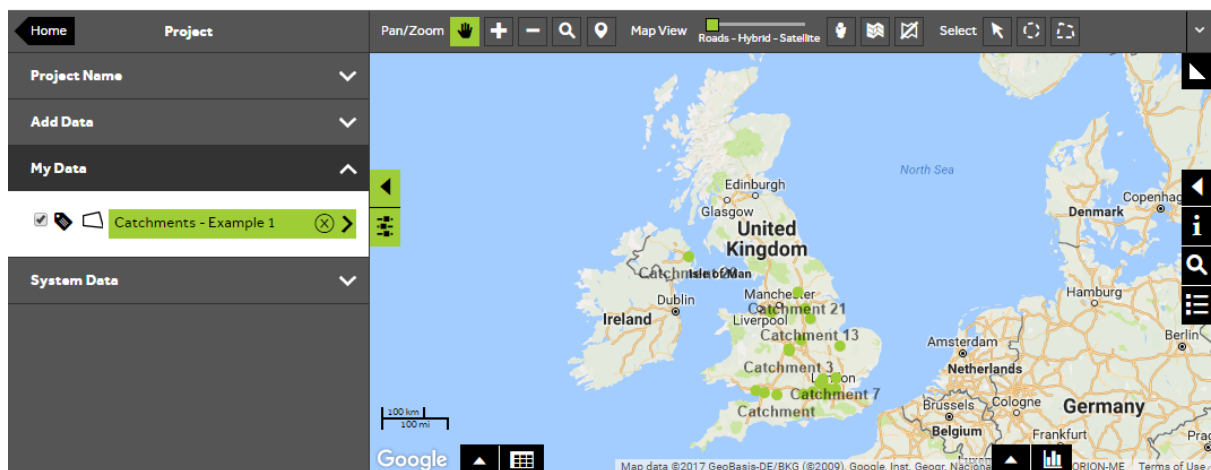
Before you start editing your Catchments, make sure that you have your data set up in a saved project. If you need assistance getting the data into SKiN please refer to the following sections:

- Catchments Steps - Create Project
- Catchments Steps - Import Data



1 of 4 Edit a Catchments layer

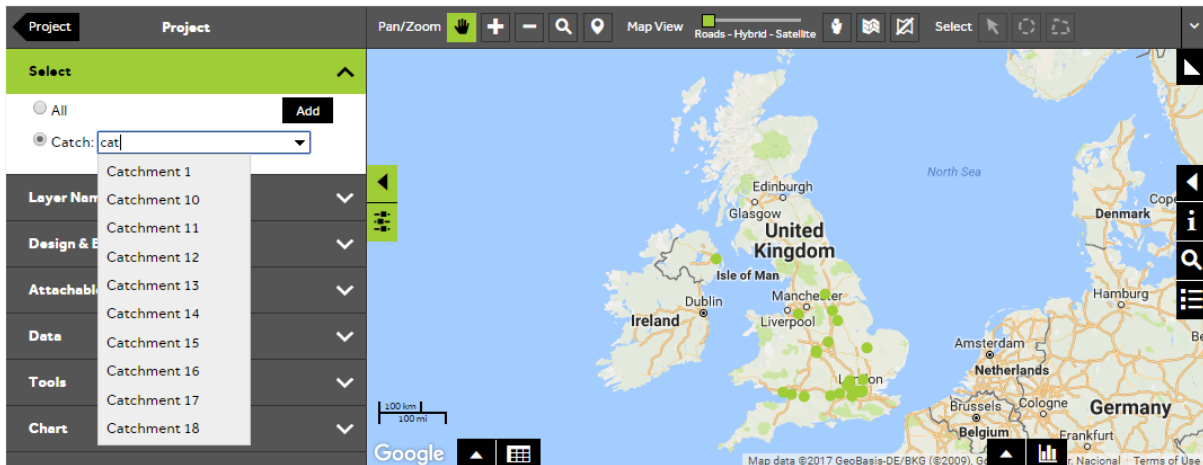
- To change your own data, **Open an existing project** and then select **My Data**.
- So that you will be able to see the change in your Catchment name on the map, it is a good idea to make sure that the labels are switched on for your layer. To switch on the labels click on the **label icon** next to your layer name so that the icon is shaded black. To open the layer click on the **layer name**.



2 of 4

Select Catchment to update

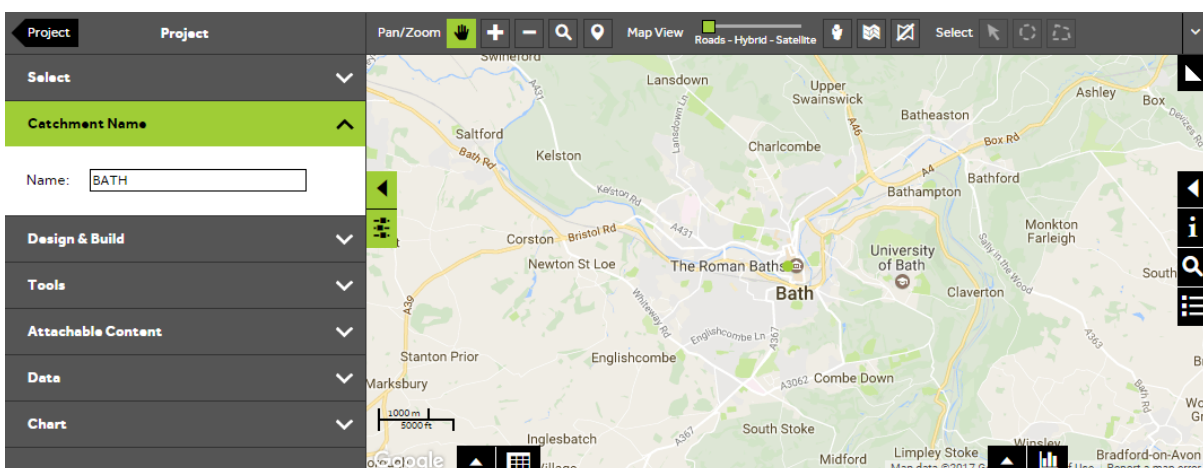
- To change the name (or unique identifier) of a Catchment, you need to firstly select the Catchment. To select your Catchment, open the **Select** section and click on the button next to **Catch**, then start to type in the name of your Catchment into the text box, you will see a dropdown list of Catchment names. When you can see your Catchment, click on it to select it.



3 of 4

Change the Catchment name

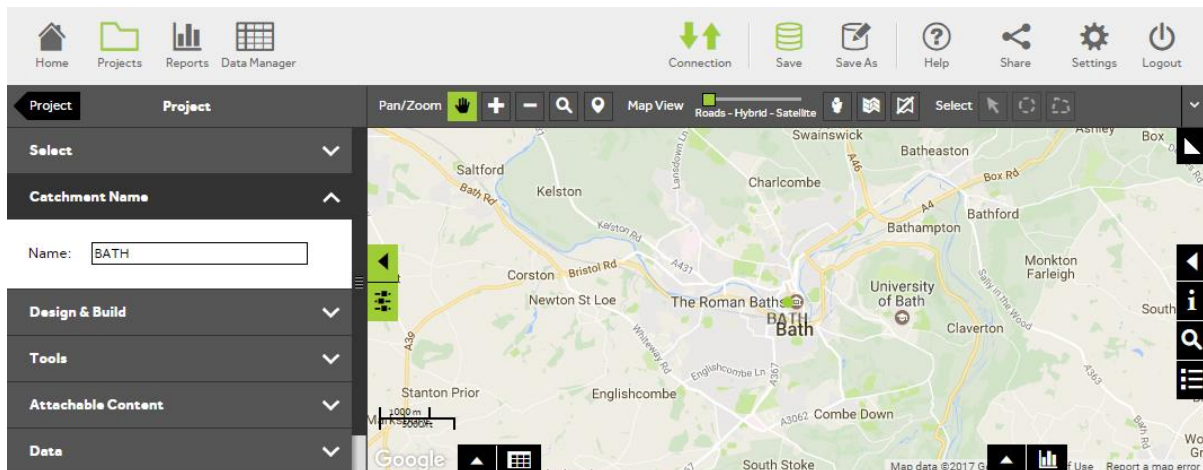
- To change the catchment name open the **Catchment Name** section and type a new name in the text box. The map will automatically update to reflect the change.



4 of 4

Save your project

- To save the change made to your layer, click on the **Save** button. This will save the changes to the layer and any other changes made to the project.



What do you want to do next?

You may wish to change colour or size of the Catchments, or you may wish to attach photos or documents, please refer to the following sections for further assistance:

- Refer to: **Catchments Steps - Style Layer - Colour**
- Refer to: **Catchments Steps - Create Radial Catchment**
- Refer to: **Catchments Steps - Attach Content**
- Contact: **Geoplan Support**