

HARSH HOTLINE

IF YOU CANNOT FIND THE EXACT SPECIFICATIONS TO MATCH YOUR APPLICATION, CALL 800-227-1702.

WE WILL RUN YOUR SPECS THROUGH OUR EXCLUSIVE **H.A.P.** (HARSH APPLICATION PROGRAM).

EMAIL: harsh@harshenviro.com
WEB: www.harshenviro.com

THE BEST TIPPING GEAR EVER,
MADE EVEN BETTER

To back up the best warranty in the industry, HARSH has subjected each Rigid Lift Main Frame design to a tough 20,000 cycle test (2/3 of this test simulated maximum off-center load conditions). The Rigid Lift performed without main frame failure and very little wear to moving parts.

Many years of customer use and testing in the field is positive proof of excellence and durability of the HARSH Rigid Lift Tipping Gear.

- 7 year limited warranty
- World wide recognition
- Industry leader for over 60 years
- Built and tested to last longer
- Featuring dynamic stability
- Minimal weight
- High polished hard chrome cylinders
- Fast tipping cycle
- 3100 PSI operating pressure (214 bar)
- Ease of maintenance
- Classified as:
NTEA Class 120 dump body hoist
NTEA Class L conversion hoist.



RL-L125

SINGLE ACTING

TWO FRAME CONFIGURATIONS AVAILABLE:

★ TRUCK MOUNT ★ TRAILER MOUNT ★

BOX LENGTH (FEET)	OVER-HANG * (INCHES)	DUMP ANGLE			
		40°	45°	50°	55°
		231"	207"	187"	171"
26	36	54.1	48.4	43.7	39.9
	24	49.1	44.0	39.7	36.3
	18	47.0	42.1	38.0	34.7
28	36	49.1	44.0	39.7	36.3
	24	45.0	40.3	36.4	33.2
	18	43.2	38.7	34.9	31.9
32	18	37.3	33.4	30.10	27.5

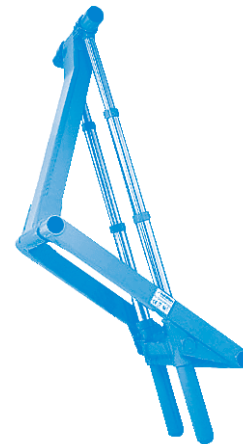
DUMP BODY APPLICATIONS

17	6			54.6	49.9
	12			58.3	53.2
18	6			51.4	47.0
	12			54.6	49.9

NOTE: CAPACITY IN TONS AT 3100 PSI (214 BAR)

- (1) Overhang based on 44" from center line of tail hinge pin to center line of truck trunion with 2" clearance between cab and box.
- (2) These capacities are for the body and payload together with an evenly distributed, non-diminishing, solid load for the full dump cycle. The center of gravity of the load is assumed to be at the center of the body.

SPECIFICATIONS SUBJECT TO CHANGE WITHOUT NOTICE

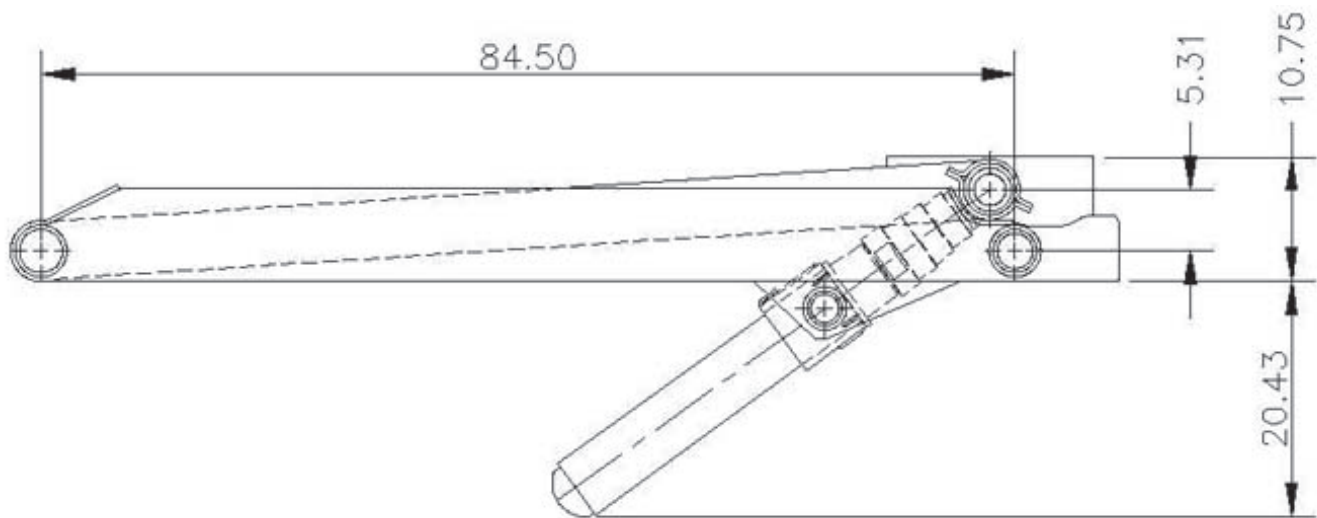


HARSH
Tipping Gear

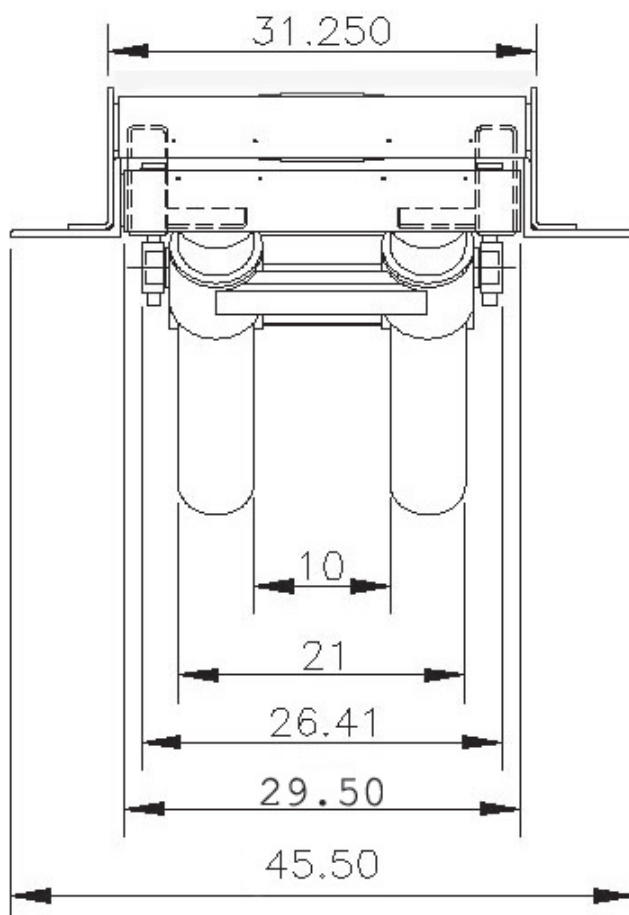


HARSH INTERNATIONAL, INC. 600 Oak Ave., Eaton, CO 80615
TEL 970-454-2291 800-227-1702 FAX 970-454-3491

RL-L125



WIDE



NARROW

