

Note: image is for illustration purposes only.  
Please talk to us regarding pricing of this home.



## THE BOULEVARD

5

2

2

### Affordable luxury for the ultimate family home

The Boulevard offers affordable luxury for families, with its modern facade and stunning street appeal. This home has it all, with 5 bedrooms, 4 living spaces, 2 bathrooms, study and more.

With everything you could ever want in a home, The Boulevard can be zoned to suit your lifestyle. The flexible floorplan has style, space and plenty of storage, making it the ultimate family home for generations to come.

### Small enough to listen, big enough to deliver

At Todd Newman Builders we are committed to, and base our reputation on, the provision of an exceptional level of service, a pride in the finished product, and more importantly, the quality of the professional and personal relationships established with our clients.

Our business foundation is beautiful homes, happy clients and a mutual respect of the relationship between builder, client, and trades.

Ready to start your journey? Have a chat with Todd Newman today.

# THE BOULEVARD

5 2 2

## Home Dimensions

Total Area 378.62m<sup>2</sup> / 40.75sq

House Length 29.31m

House Width 16.40m

## Room Dimensions

Family Room 4.50m x 4.60m

Meals 3.90m x 3.91m

Kitchen 3.10m x 4.60m

Rumpus 4.20m x 5.40m

Theatre 3.90m x 4.80m

Retreat 4.00m x 3.00m

Study 3.00m x 2.50m

Bedroom 1 4.10m x 4.20m

Bedroom 2 3.00m x 3.60m

Bedroom 3 3.00m x 3.60m

Bedroom 4 3.00m x 3.44m

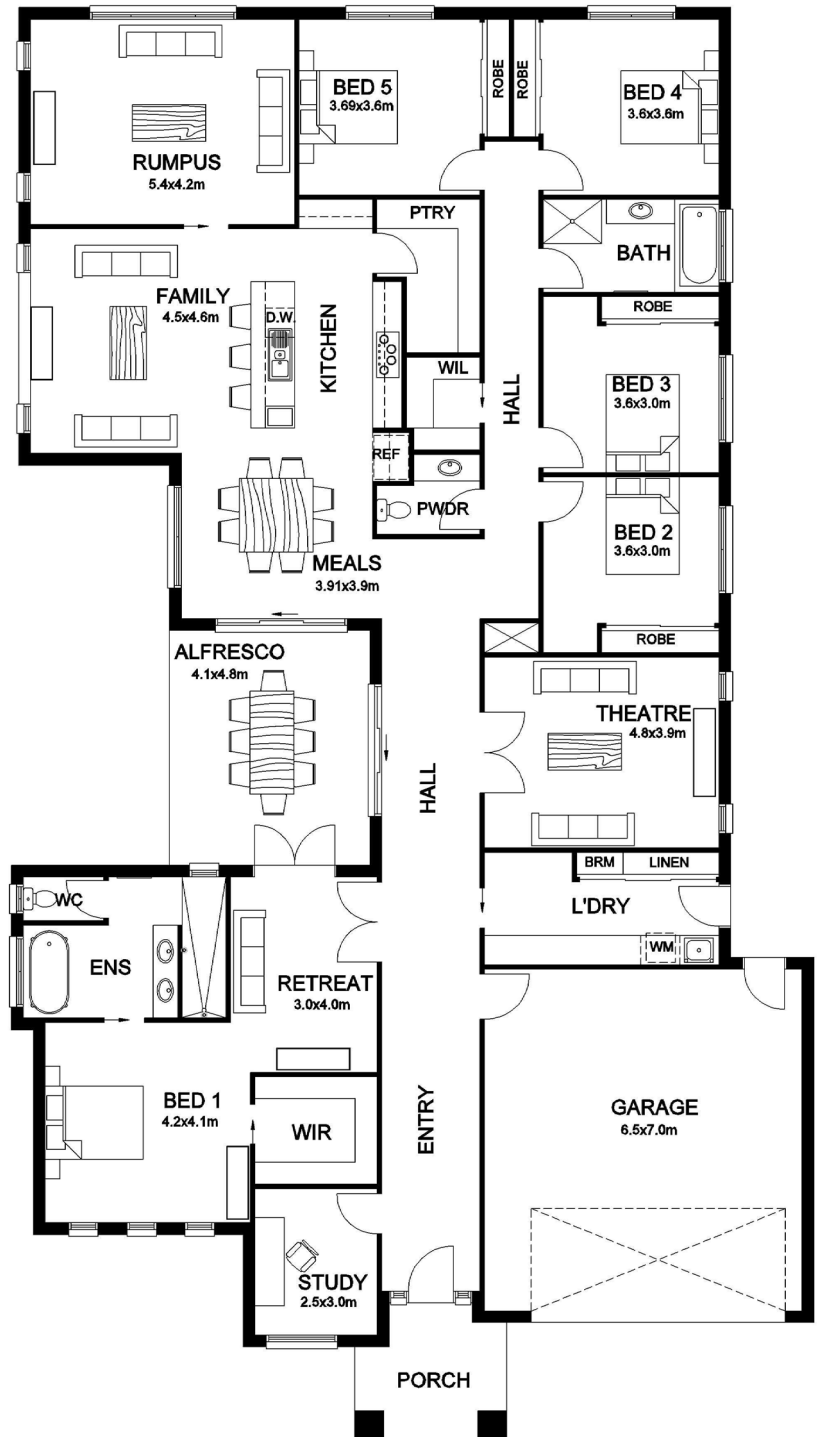
Bedroom 5 3.60m x 3.69m

Double Garage 6.50m x 7.00m

## Design Options

At Todd Newman Builders we understand that you may want to tailor your home to suit your needs.

For information about structural and internal design options available for this home design and floorplan, please speak to the friendly staff at Todd Newman Builders.



FLOORPLAN

Ready to start your journey? Have a chat with Todd Newman today.