

Note: image is for illustration purposes only.  
Please talk to us regarding pricing of this home.



## THE TERRACE

3

2

2

All the features you want in a compact package

This is the house that has it all! It ticks all the boxes, with features that are often only seen in larger homes: large light filled living areas, walk-in pantry, walk-in linen, double sized shower to the ensuite, all three large bedrooms, plus a study or fourth bedroom.

An outdoor room to entertain family and friends all year round, and a spacious double garage with internal access completes this compact package.

Small enough to listen, big enough to deliver

At Todd Newman Builders we are committed to, and base our reputation on, the provision of an exceptional level of service, a pride in the finished product, and more importantly, the quality of the professional and personal relationships established with our clients.

Our business foundation is beautiful homes, happy clients and a mutual respect of the relationship between builder, client, and trades.

Ready to start your journey? Have a chat with Todd Newman today.

# THE TERRACE



## Home Dimensions

Total Area	218.47 m <sup>2</sup> / 23.57sq
House Length	16.50m
House Width	15.85m

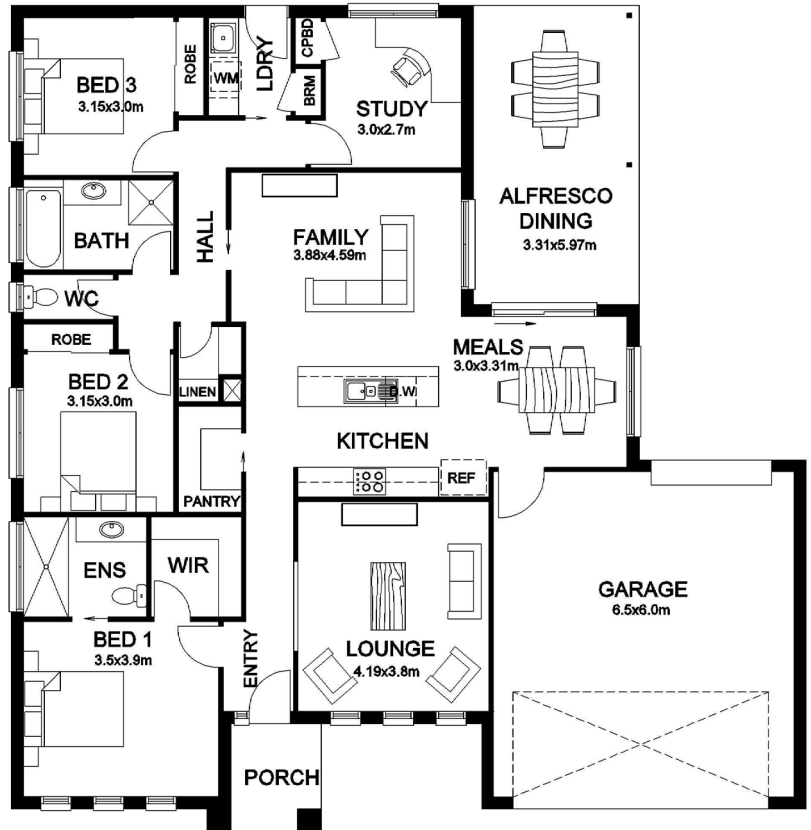
## Room Dimensions

Family	3.88m x 4.59m
Meals	3.00m x 3.31m
Lounge	4.19m x 3.80m
Bedroom 1	3.50m x 3.90m
Bedroom 2	3.15m x 3.00m
Bedroom 3	3.15m x 3.00m
Study	3.00m x 2.70m
Alfresco	3.31m x 5.97m
Double Garage	6.50m x 6.00m

## Design Options

At Todd Newman Builders we understand that you may want to tailor your home to suit your needs.

For information about structural and internal design options available for this home design and floorplan, please speak to the friendly staff at Todd Newman Builders.



FLOORPLAN

Ready to start your journey? Have a chat with Todd Newman today.