

Construction Range

# Roofings™



Protects from above.



# Roofing™

IPL Roofing products can be found all over New Zealand on commercial, residential and agricultural buildings. Plywood offers additional bracing values and keep heat in and noise out. It also provides excellent cover from the weather so construction work can continue beneath the roof substrate while the roofing system is being installed.

## At a glance

- Manufactured to AS/NZ 2269 Construction Plywood.
- High strength-to-weight ratio makes it ideal in a range of applications where strength and stiffness are required.
- Available treated to H3.2 (CCA treated) and, on request, clear treated LOSP to H3.1 standard.
- Also available untreated to be used in areas where contact with moisture is not a consideration.
- Comes with plastic tongue & groove for easy interlocking.
- Available in 15, 17, 19, 22, 25 and 32mm thicknesses.
- IPL Roofing can be manufactured for use in a situation where the underside can be exposed with our 100mm spaced V groove profile to make a feature of the visible underside of the roofing sheet.

## Installation

- Lay roofing sheets in a staggered pattern
- Roofing comes in a D face however a C face can be made on request for applications that require a smoother surface, such as membrane roofing
- Sheets must be continuous over at least two spans
- Allow 1-2mm expansion joint on sheet ends at the rafter / truss
- Allow ridge and apron clearance for ventilation as required
- Standard nailing pattern is 75mm spacing on all gable, gutter, hip and ridge and eave lines, and 160 centres on through supports. Sheet thickness, wind load and roofing system will determine exact fixing requirements as per architect / engineer specifications.

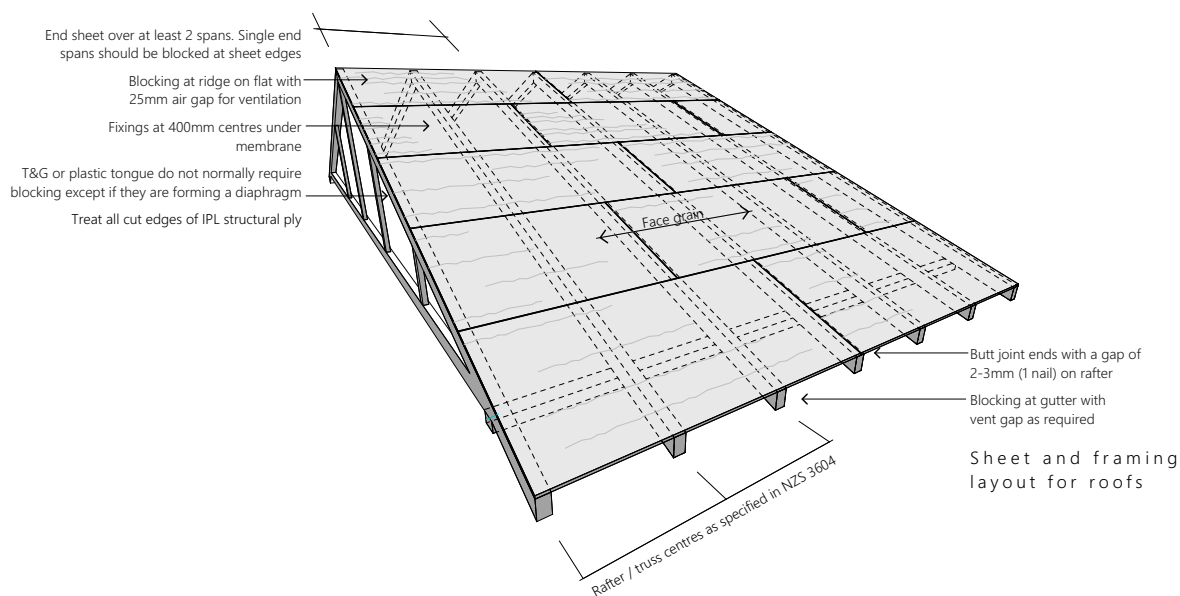
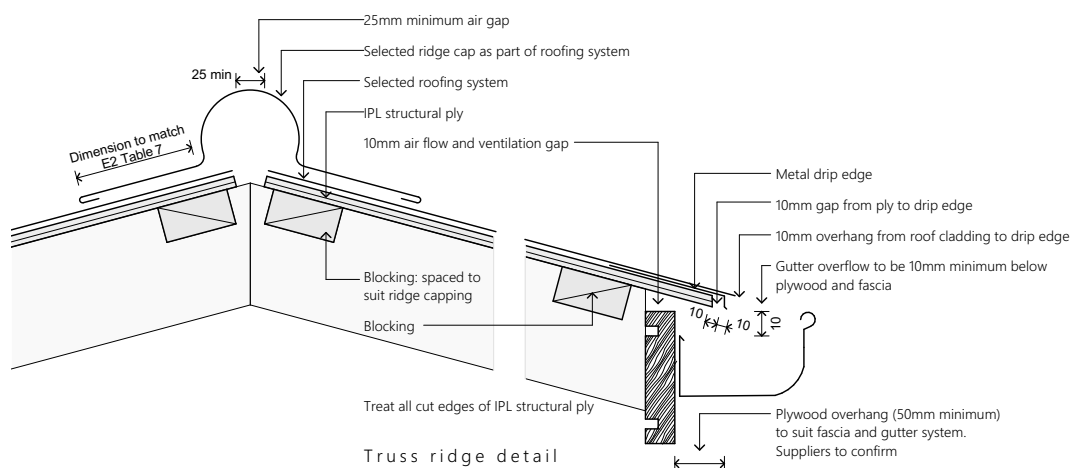
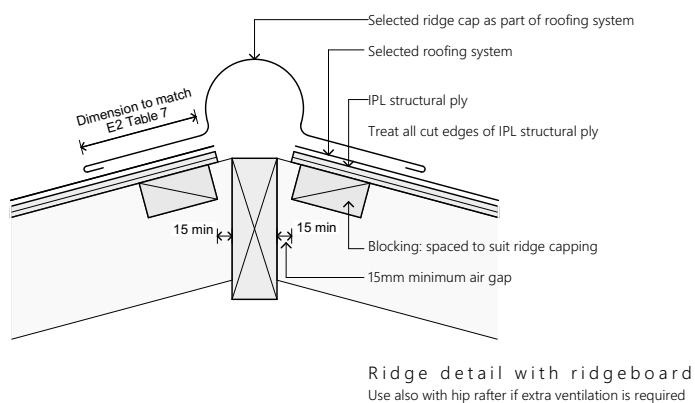
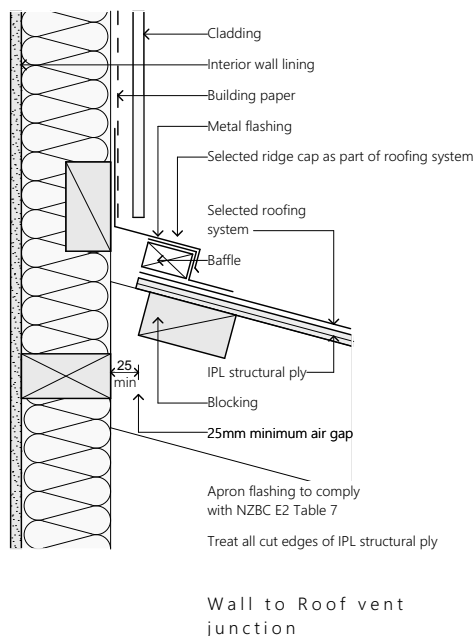
## Compliance with Standards

IPL Flooring is manufactured in accordance with AS/NZ 2269 Construction Plywood. The panels are to be installed in accordance with the building design code.

The Engineered Wood Products Association of Australasia (EWPA or PAA) audits the production processes and internal quality control procedures to ensure we meet the requirements of the product Standard. This third party audited, process based, quality assurance scheme meets the requirements of an ISO Type 5 system and ensures constant monitoring of maintaining production of quality.

## Environmentally Sustainable

All veneer used in IPL Roofing is from renewable, plantation-grown Pinus Radiata New Zealand plantations and is available PEFC certified on request.





International Panel & Lumber (West Coast) LTD  
3 Trickies Road, Greymouth, New Zealand, PO Box 179  
[www.ipply.nz](http://www.ipply.nz)



Crafted on the Coast  
Made for New Zealand