

Meadow Branch Landfill Informational Meeting

December 16, 2021

AGENDA



- No Video or Audio Recording permitted
- Meeting duration 1 hour
- Introductions
- 2021 Upgrades
- 2022 Upgrades
- Future Meetings
- Questions – please limit to 2 minutes per question

INTRODUCTIONS



- TDEC
- Local Officials
- Meadowbranch Landfill
 - *Tim Watson – Landfill District Manager*
 - *Steve LaFollette – Division Vice President*
 - *Matt Crockett – Region Engineering Manager*
 - *Nelson Breeden – Region Engineer*

History



- Landfill Opened - Areas A/B/C– 1978
- Area D/E Expansion - 1997
- Waste Connections Purchase – 2002
- Gas Plant Began Operation – 2011
- Area F Expansion – 2004
- Area G Expansion – 2018
- Evaporator Began Operation – April 2020

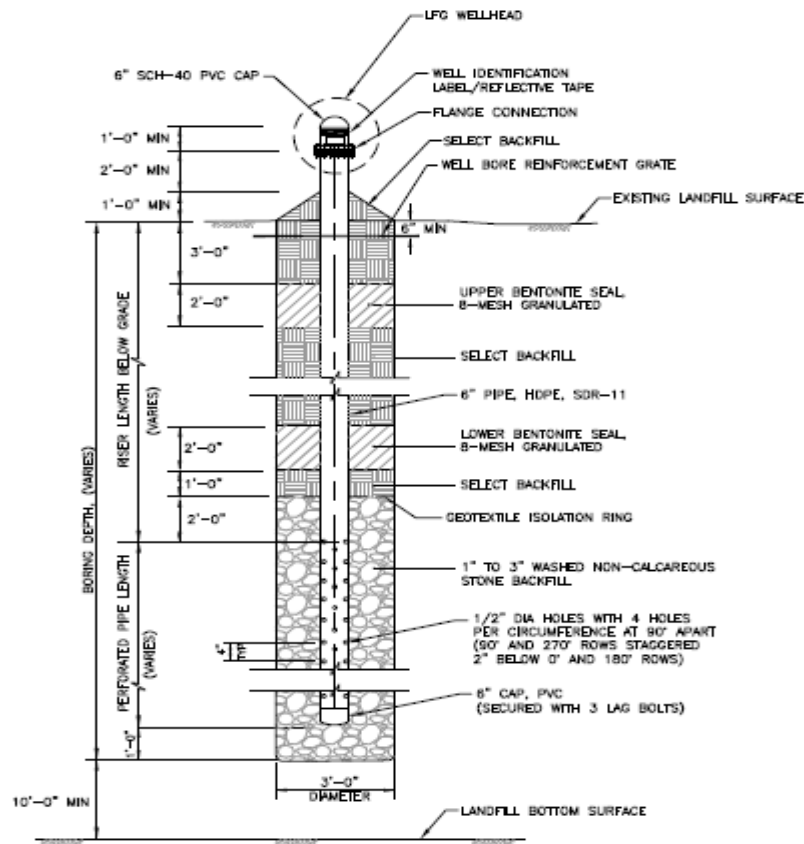
2021 UPGRADES



- Q1 2021
 - 33 Landfill Gas Extraction Wells
- Q3 2021
 - 25 Landfill Gas Extraction Wells
 - 5 Horizontal Landfill Gas Extraction Wells
- Q4 2021
 - 24 Landfill Gas Extraction Wells (adding 2 as of Wednesday)
 - 3 Horizontal Landfill Gas Extraction Wells
- Flare System Upgrades
- 10 acres of additional soil cover in November/December (additional 12 inches)
- 5 acres spray sealant

TOGETHER
WE'RE BETTER



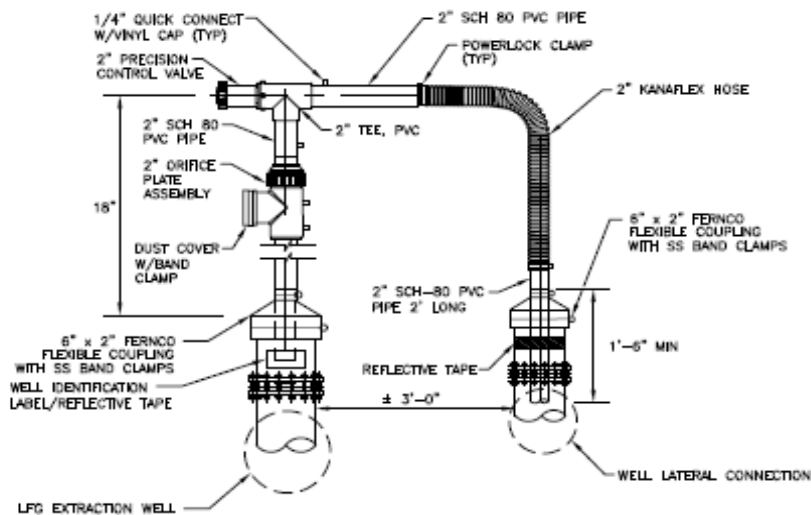


LFG EXTRACTION WELL
NTS

3
2

NOTE:

1. ALL SIZES AND DIMENSIONS ARE APPROXIMATE.



LFG WELLHEAD
NTS

2
1

NOTE:

1. WELLHEAD ILLUSTRATED IS QED ORP215 WELLHEAD AND SHALL INCLUDE A FULL SET OF ORIFICE PLATES.

Wellhead System

**TOGETHER
WE'RE
BETTER**



2022 UPGRADES



- Q1–Q2 2022 – current fill area
 - Horizontal Landfill Gas Extraction Wells (estimated 10)
 - Potential LOCI controls for select wells
- Q1-Q2 2022
 - Approximate 30 acres Geosynthetic Cover
- Q2-Q3 Final Closure Area
 - 5 acres Soil and Geosynthetics Final Closure
- Q3-Q4 Landfill Gas Well Installation
 - 25-30 Landfill Gas Extraction Wells

FUTURE MEETINGS



- Monthly/Quarterly Meetings
- Next Meeting in January

Questions