

Job Name:

System Reference:

Date:

**UNIT OPTION**

Standard Model.....PUMY-P60NKMU3
Seacoast (BS) Model.....PUMY-P60NKMU3-BS

ACCESSORIES

Drain Socket.....PAC-SG61DS-E
Optional Defrost Heater.....PAC-SJ20BH-E
Drain Pan.....PAC-SH97DP-E
Front Wind Baffle (One Piece)*.....WB-PA3
Air Deflector Vertical.....ADV-1
Air Outlet Guide (One Piece)*.....PAC-SH96SG-E
Header Kit.....for details see Pipe Accessories Submittal
Joint Kit.....for details see Pipe Accessories Submittal

*PUMY requires two outlet guides and two wind baffles for installation

Specifications			System
Unit Type			PUMY-P60NKMU3(-BS)
Cooling Capacity (Nominal)		BTU/H	60,000
Heating Capacity (Nominal)		BTU/H	66,000
Guaranteed Operating Range	Cooling ^{1,2}	°F [°C]	5.0~115.0 [-15.0~46.0]
	Heating	°F [°C]	-13~59 [-25.0~15.0]
External Dimensions (H x W x D)		In. [mm]	52-11/16 x 41-11/32 x 13+1 [1,338 x 1050 x 330+25]
Net Weight		Lbs. [kg]	302 [137]
External Finish			Galvanized sheets (+power coating for -BS type) <MUNSELL 3Y 7.8/1.1>
Electrical Power Requirements	Voltage, Phase, Hertz, Power Tolerance		208/230V, 1-phase, 60 Hz,
Minimum Circuit Ampacity		A	36.0
Maximum Overcurrent Protection		A	45
Recommended Fuse Size		A	40
SCCR		kA	5
Refrigerant Piping Diameter	Liquid (High Pressure)	In. [mm]	3/8 [9.52] Flare
	Gas (Low Pressure)	In. [mm]	5/8 [15.88] Flare
Indoor Unit Connectable	Total Capacity		50.0~130.0% of outdoor unit capacity
	Model/Quantity		P04~P72/1.0~12.0
Sound Pressure Levels		dB(A)	58.0~59.0
Compressor	Type x Quantity		INVERTER-driven Scroll Hermetic x 1
Compressor Motor Output		kW	3.9
Refrigerant	Type x Original Charge		R410A x 11 lbs + 4 oz [5.1 kg]
Protection Devices	High Pressure Protection		High pressure sensor, High pressure switch 601 psi (4.15 MPa)
	Inverter Circuit (Comp./Fan)		Over-heat protection, Over-current protection
	Compressor		Discharge thermo protection, Over-current protection
Lubricant			FVC68D (2.3 liters)
AHRI Ratings (Ducted/Non-ducted)	EER		11.1/13.3
	SEER		17.8/20.0
	COP		3.7/4.1
	HSPF		10.7/12.0

NOTES:

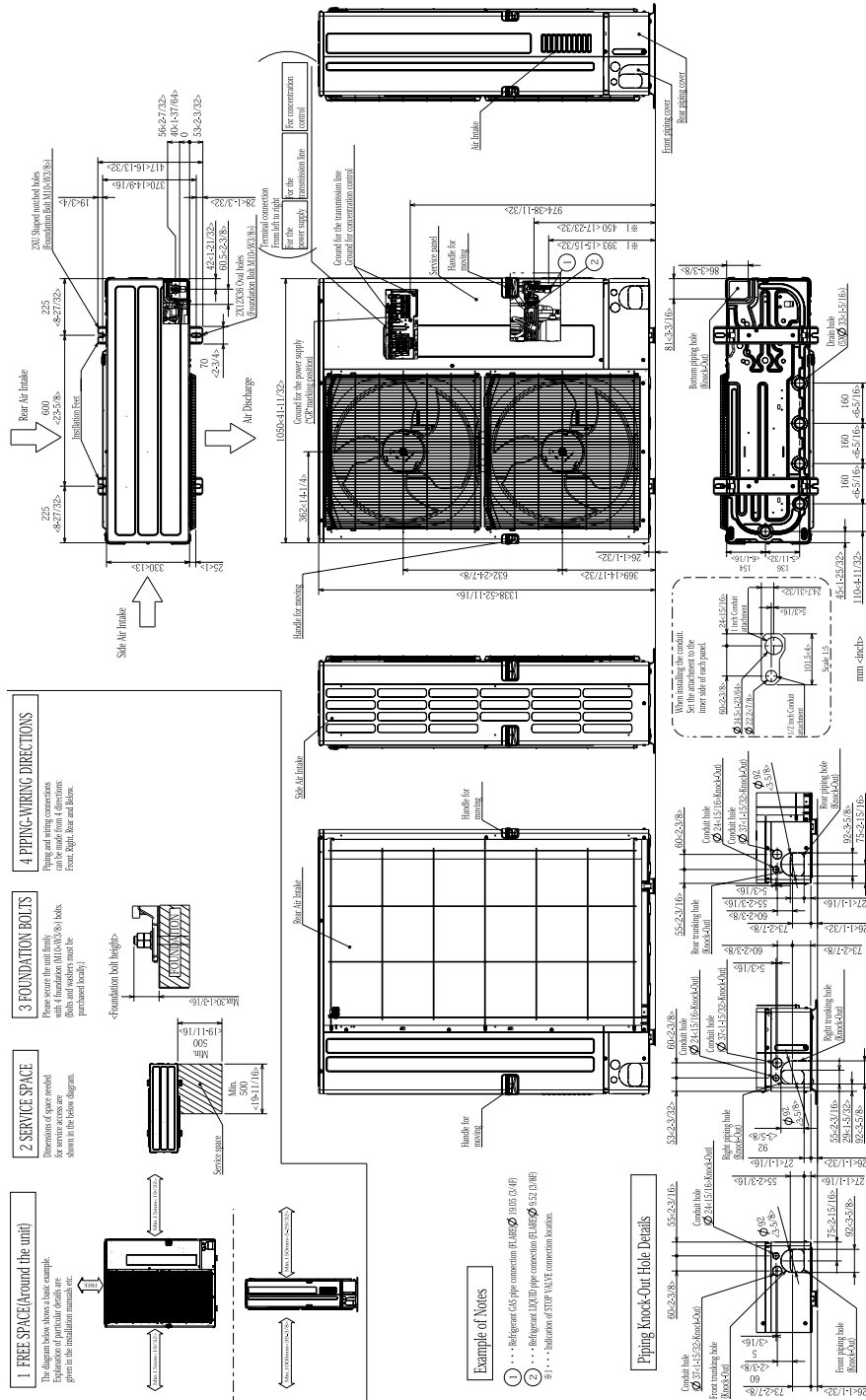
Cooling | Indoor: 81° F (27° C) DB / 66° F (19° C) WB; Outdoor: 95° F (35° C) DB

Heating | Indoor: 68° F (20° C) DB, Outdoor 45° F (7° C) DB / 43° F (6° C) WB

¹When using Wind Baffles [WB-PA3], the minimum operating range is 5° F. Without Wind Baffles, the minimum operating range is 23° F²When connecting PKFY-P06NBMU/P08NHMU, PFFY-P06/08/12NEMU or PFFY-P06/08/12NRMU indoor units, the minimum operating range is 50° F

OUTDOOR UNIT: PUMY-P60NKMU3(-BS) – DIMENSIONS

Unit: mm(in)



NOTES:
SEACOAST PROTECTION
 Anti-corrosion Protection: A coating treatment is applied to condenser coil for protection from air contaminants.
 Standard: Salt Spray Test Method - no unusual rust development to 480 hours.
 Sea Coast (BS): Salt Spray Test Method (JRA 9002) - no unusual rust development to 960 hours.

1340 Satellite Boulevard Suwanee, GA 30024
 Toll Free: 800-433-4822 www.mehvac.com

FORM# PUMY-P60NKMU3(-BS) - 202007

