

the Pearl

HOTEL

PARTY
WITH US
NEXT TIME

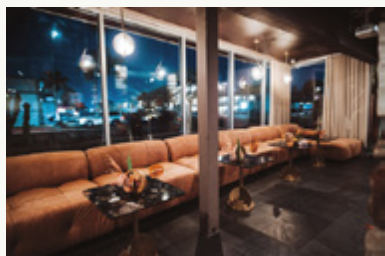
ABOUT THE PEARL HOTEL

Recently refreshed by designers *Electric Bowery* and *Human Kind Design Company*, the hotel's interiors are outfitted in contemporary design as a contrast to its 1960s architectural features. The selection of 23 guest rooms are arrayed around the Art Moderne oyster-shaped pool and native plantings by *Terremoto*, which flows into onsite cocktail bar and restaurant *Charles + Dinorah*.

A long-time Point Loma neighborhood institution, **The Pearl** invites travelers into the community. Not only walking distance from swimming and surf beaches but just as close to Downtown San Diego.

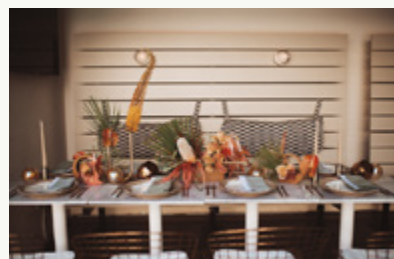
For a visual vacation follow @casetta_group

LOUNGE 15-35 GUESTS



- ♦ RECEPTION
- ♦ COCKTAIL + HORS D'OEUVRES
- ♦ 2 PROJECTORS
- ♦ PRIVATE OUTDOOR PATIO

FAMILY-STYLE DINNER 30+ GUESTS



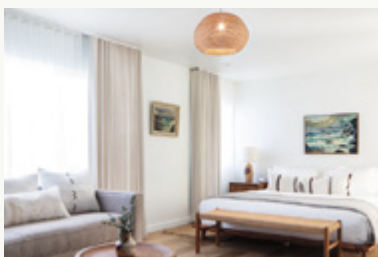
- ♦ STARTING AT \$65++ PP
- ♦ SEMI-PRIVATE DINING POOLSIDE
- ♦ DRINK PACKAGES AVAILABLE
- ♦ WELCOME COCKTAIL IN THE LOUNGE

POOL DECK & BAR BUYOUT UP TO 110 GUESTS



- ♦ F&B MINIMUM AND SITE FEE BASED UPON SEASON & GUEST COUNT
- ♦ INCLUDES USES OF TABLES, CHAIRS, DINNERWARE, LINENS
- ♦ DEDICATED BANQUET TEAM INCLUDING CHEF, BARTENDERS & SERVERS

ROOM BLOCKS 23 NEWLY RENOVATED GUESTS ROOMS



- ♦ MINIMUM 10 ROOMS TO RECEIVE DISCOUNTED GROUP RATE
- ♦ WELCOME AMENITIES

EVENTS at THE PEARL HOTEL

The Pearl's pool deck restaurant, lounge, bar and private patio can be transformed for any occasion.

From intimate get-togethers, to elopements, to full weddings with dinner and dancing receptions, birthdays, social gatherings, and corporate functions of up to 300 guests on flow, **The Pearl** creates one-of-a-kind events indoors and out.

OWN THE HOTEL FOR A DAY UP TO 300 GUESTS ON FLOW



- ♦ COMPLETE EXCLUSIVITY OF THE ENTIRE PROPERTY INCLUDING ALL GUEST ROOMS, LOUNGE, HOTEL BAR, RESTAURANT & POOL DECK
- ♦ INCLUDES USE OF TABLES, CHAIRS, DINNERWARE, LINENS
- ♦ DEDICATED BANQUET TEAM INCLUDING CHEF, BARTENDERS & SERVERS
- ♦ VENUE RENTAL FEE AND FOOD & BEVERAGE MINIMUM ARE DETERMINED BY SEASON AND GUEST COUNT
- ♦ REQUIRED TO RENT 12 GUEST ROOMS THE NIGHT PRIOR AND ALL 23 GUEST ROOMS THE EVENING OF THE EVENT

