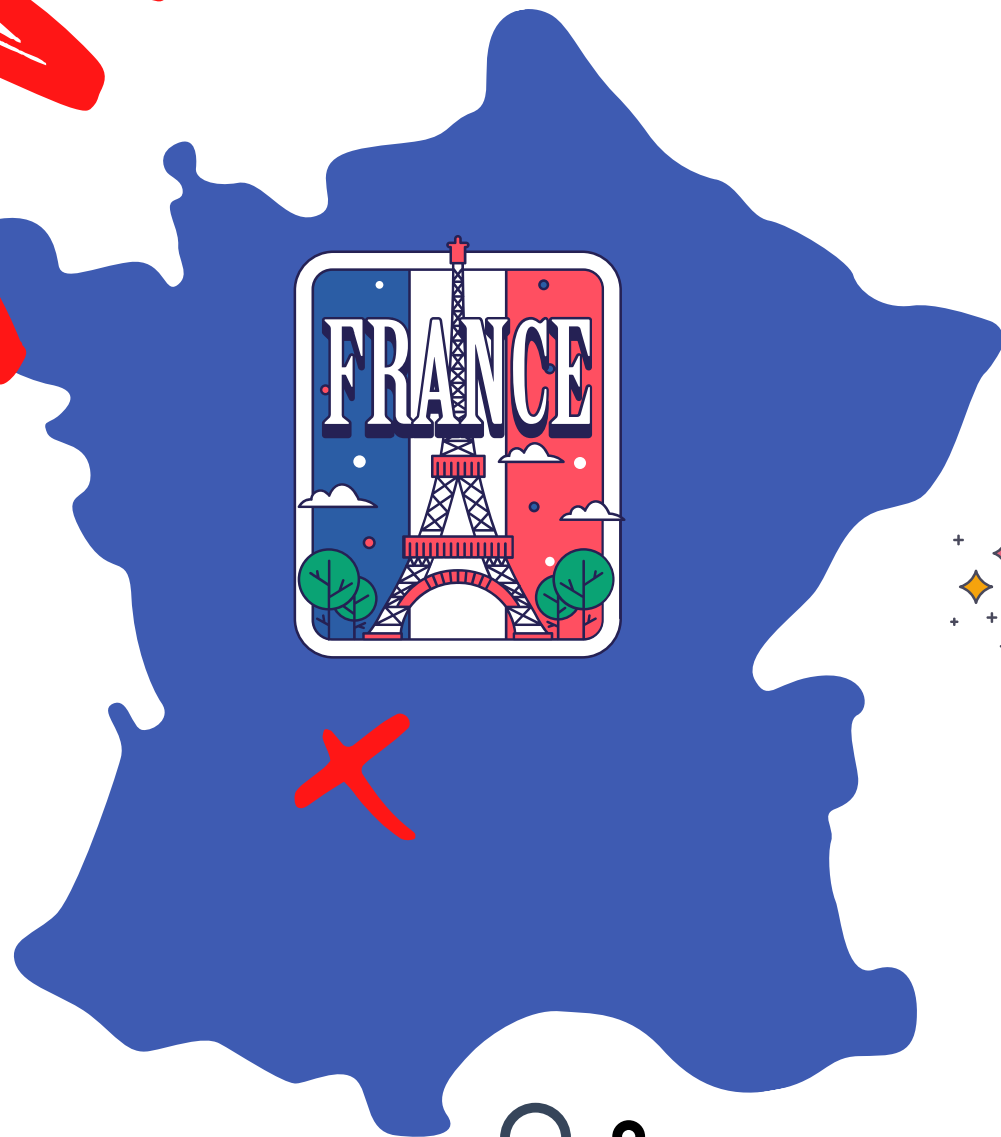
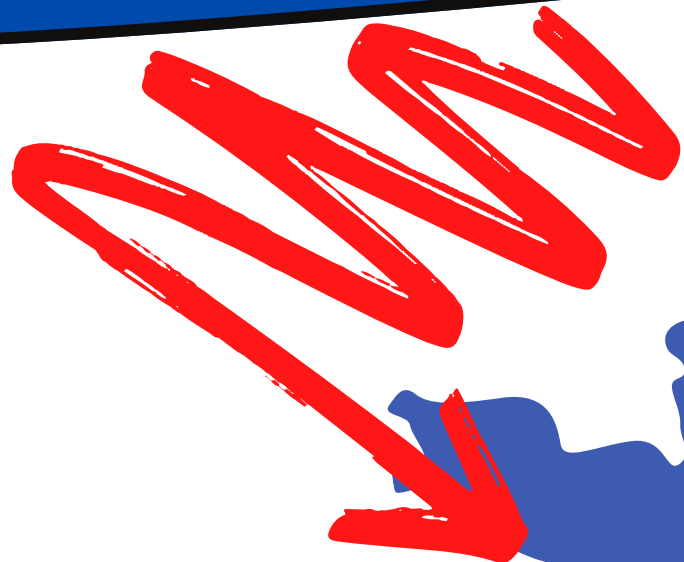
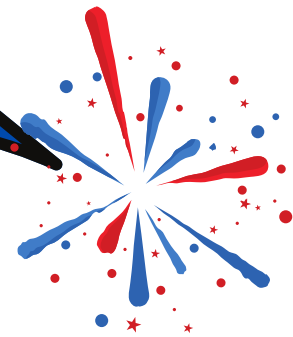


ECOLE DE SAVIGNAC SEMESTER EXCHANGE HANDBOOK



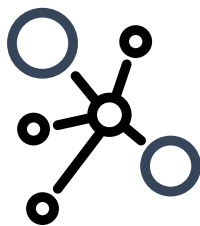
SUBMIT



outside
the box



campus life



altruism

dedicated
teams



achievements



fun



ECOLE DE SAVIGNAC



WELCOME TO ECOLE SUPERIEURE INTERNATIONALE DE SAVIGNAC

Dear student

A warm welcome from our team!

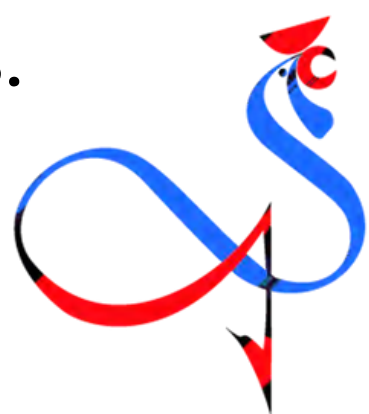
We will be happy to assist you with any matters that might arise during your stay. General information contained in this booklet will also help you to find your bearings and thus facilitate your stay with us.



Incoming students are required to arrive for the welcome day, at least two working week days prior to the start of semester, so you can hit the ground running by first familiarising with the campus, and meeting their future contacts.

We look forward to a great semester with you, and hope that your time here will challenge you in new and different ways.

The international pole



New Tab



Table of contents



About the southwest of France - p. 3

Nouvelle Aquitaine region : activities - pp. 4-5

Studying at Savignac - pp. 6 - 8

Student dress code - p. 9

Course content - pp. 10

Student support - p. 11

Passing rules - p. 12

Getting organised - pp. 13-16

Contacts - p. 17

About the Southwest of France

Ecole de Savignac is located in the village of Savignac-les-Eglises, approx. 2h (160km) East of Bordeaux in the Southwest region of Nouvelle Aquitaine.

The list of things to do in the region is long with something to do for everyone:



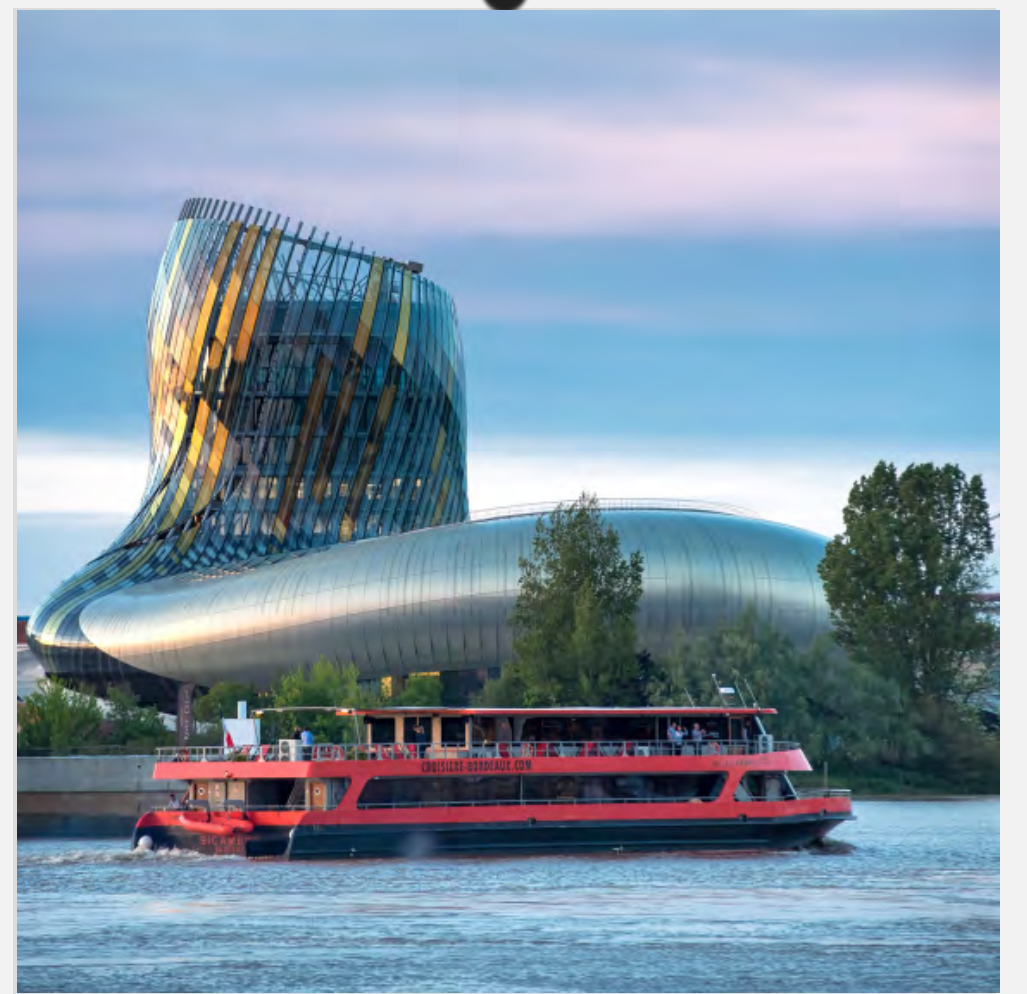
Prehistoric cave paintings of Lascaux



Picturesque villages of the Basque Country



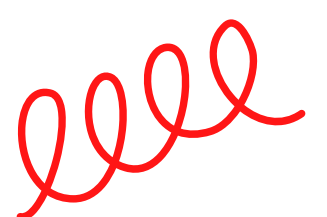
Place de la Bourse, Bordeaux



La cité du vin, Bordeaux

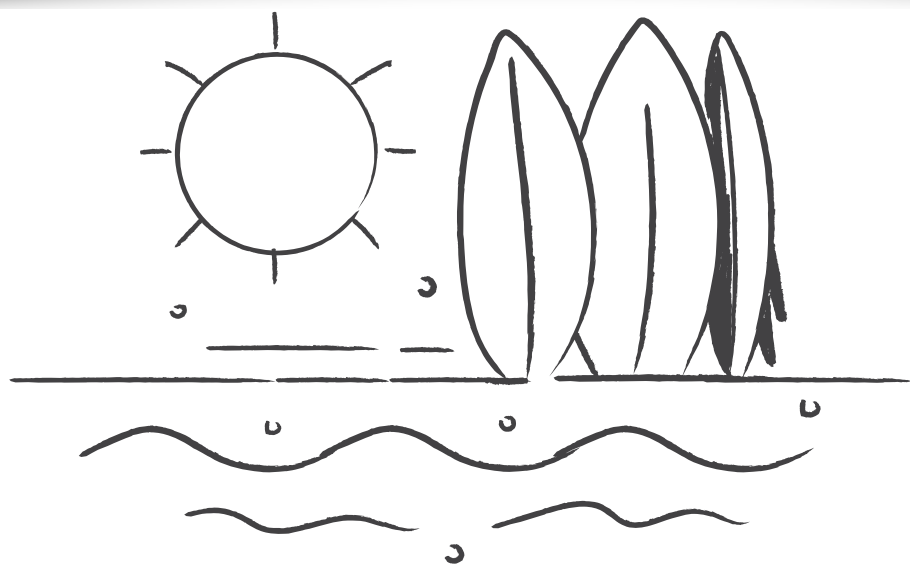
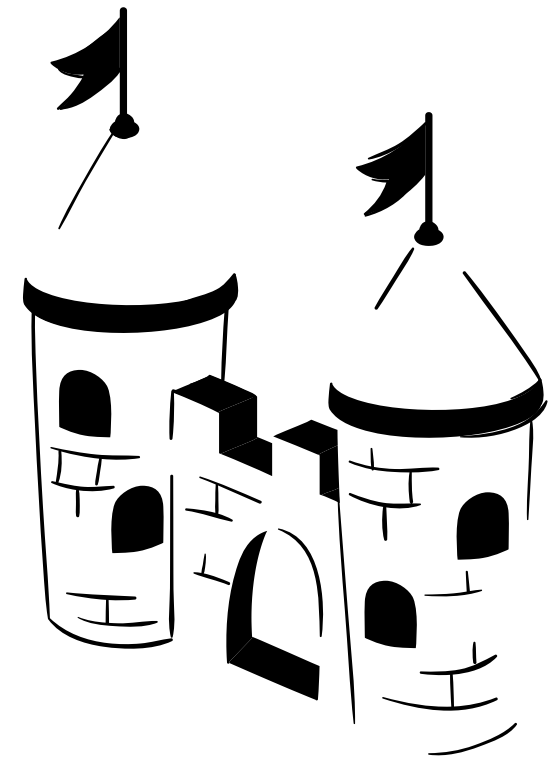


Europe's largest dune: Dune du Pilat





Medieval castles of Dordogne



Surfing, Atlantic Ocean, Biarritz



Ossau valley, The Pyrenees



Skiing in the Pyrenees



Skiing in the Massif Central

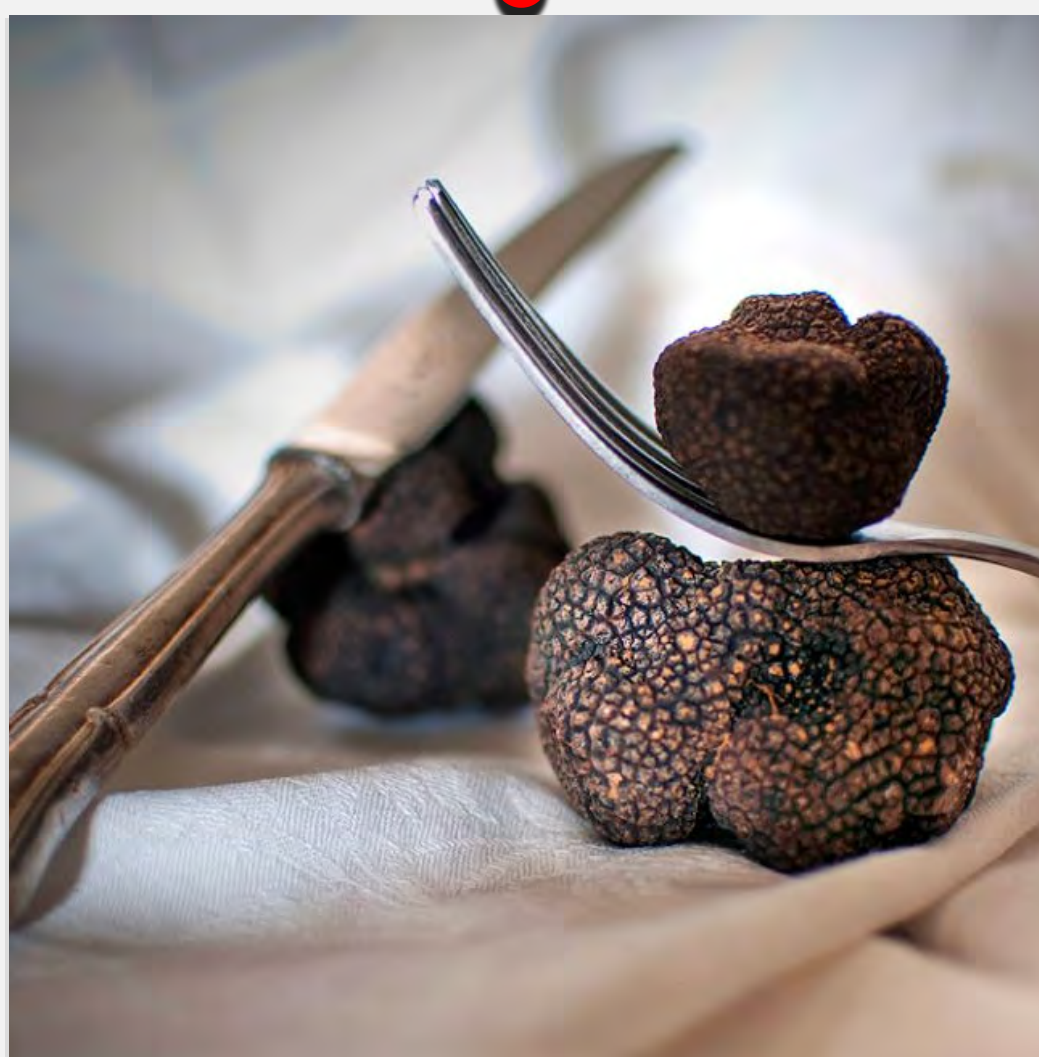




Wine tasting in...



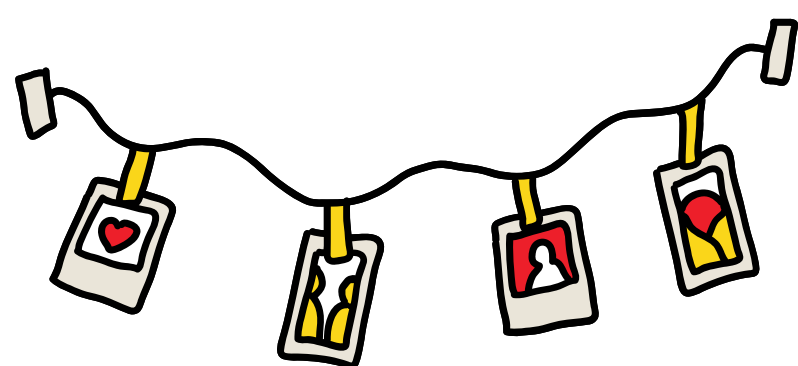
Saint Emilion



Truffle tasting : Dordogne

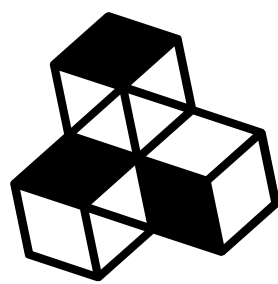


Uniques landscapes of the Dordogne



Studying at Savignac
Innovative Teaching
Human scale learning environment
Active campus life

Innovative Teaching



At Savignac, teaching has a strong practical industry focus, and encourages interactive teaching and co-development; thereby leading the students to become a proactive part of their own training.





Human scale learning environment

450 students
enrolled, 200
students at a time
on campus



By limiting the number of student places, the campus provides a personalised education, promotes the development of strong values such as care, responsibility, boldness and sense of service. The active participation of the students is an essential element in their learning experience.



Active campus life

Education is more than just obtaining a degree, and for a small school, there are many things going on that foster collaboration, communication and leadership outside the classroom. This translates into a dynamic community life based around cultural, sporting and student-run associations and projects.



Student dress code

At École de Savignac, our objective is for you to acquire skills and knowledge that will support you in your future career. To that end, you will be exposed to various subjects, procedures and certain “savoir-être” (know-how) which is more than appreciated by future employers; included is the ability to present yourself in a professional manner to ensure that you obtain positive attention from others. Your ability to identify and select appropriate workplace attire will support your efforts to present yourself at job interviews, to show yourself as a serious candidate within an organisation and to create the best possible image of yourself.

As with any part of your learning, if you have any doubts about whether your attire is appropriate, ask your programme manager prior to starting.

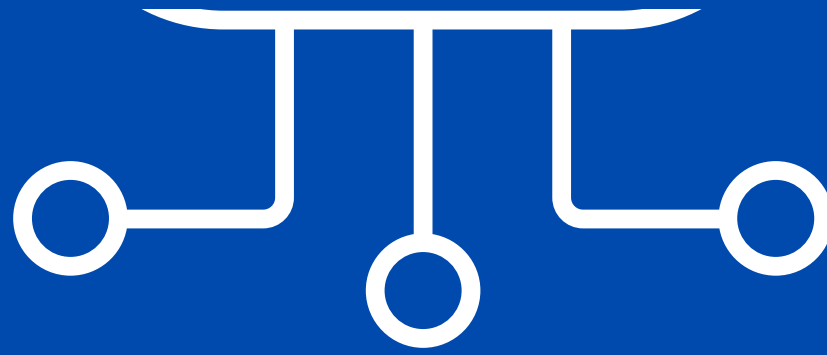


Course content

30-ects awarded
semester-programme



Personal
competencies



Professional
competencies



Management
competencies



S3 programme (autumn semester)

Cross-cultural marketing

Finance

Managing people - the manager's role

Tourism issues in the hospitality industry

Communication and Public relations in luxury hospitality

Emotions and customer experience in a restaurant

English culture and communication

Office software applications

Elective: French (online)

Personal & career development

Field trips & campus cooperative projects

S4 programme (spring semester)

English culture & communication

Event management

Elective: French (online)

Revenue management

Finance

Managing people - the manager's role

Tourism issues in hospitality industry

Field trips & campus cooperative projects

30 ECTS

30 ECTS

Student support and guidance

All students are under the guidance of the programme manager (Ms Pélagie Léger). Students normally meet with their programme manager at least once a term and are free to discuss any academic or personal problem as students might wish. At the beginning of the programme, students receive a handbook outlining the programme aims and learning outcomes, structure, regulations and assessment criteria.

la pédagogie/
teaching & learning

Students are monitored by the programme manager and those in academic difficulty are quickly counselled into appropriate remedial support.

It is important to indicate if you have any disability/learning support requirements during teaching or in assessments and examinations.

Student attendance is monitored weekly, and when absences or lateness are critical, students receive a written notification.

The programme manager plays a significant part in coordinating absence administration and letters of concern.

Pre- and post- assignment advice is offered on request.

Students are given a feedback on their assessed work so that this may help them in their referral work.

Passing rules



A minimum overall average of
10/20
is required to pass the cycle

Retrieving failure

If a grade between 0/20 and 5/20 is obtained an opportunity to retrieve failure will not be provided.

If a grade between 5 and 8/20 is obtained an opportunity to retrieve failure is provided.

Students who do not obtain an overall average of at least 10/20 will need to wait for the exam board's decision.

All work must be submitted by students within the indicated timeframe. Penalties will apply to work submitted late. No referral will be allowed for students who do not attempt any of the assessments (without mitigating circumstances).

The exam board meets (end of the semester) to agree degree awards, extenuating circumstances and recommends an outcome in line with the school policy.

If a student withdraws from the programme, he/she will be given an up-to-date grade transcript.

The European credit transfer system

ECTS Credits are based on the workload students need in order to achieve expected learning outcomes. Learning outcomes describe what a learner is expected to know, understand and be able to do after successful completion of a process of learning. They relate to level descriptors in national and European qualification frameworks.

Workload indicates the time students typically need to complete all learning activities (such as lectures, seminars, projects, practical work, self-study and examinations) required to achieve the expected learning outcomes.

30 ECTS credits are attached to the workload of a semester of formal learning and the associated learning outcomes. A student's workload ranges from 1500 – 1800 hours for an academic year, whereby one credit corresponds to 25-30 hours of work.



Entry and Visa Requirements

Depending on your nationality, your situation and the length of your stay, procedures for visa application to study in France can be found [here](#)

The long-stay internship visa (VLS-TS), allows you to do your internship in France for more than 90 days. For more information on [visas](#)

Covid : Quarantine after arrival 

It's your responsibility to ensure you meet entry and quarantine requirements. These are subject to adjustments in view of the evolution of the pandemic.

Check entry and quarantine requirements [here](#)

Self-isolation during semester

Whether they are living in campus accommodation or private-rented accommodation, a network of solidarity amongst students and administration staff operates should students need to self-isolate during their stay: e.g. food etc. brought up to the student's room, online class access organised...

IMPORTANT!

Health care and Insurance

To open a French healthcare account as a foreign student, register with the national health insurance system (Sécurité Sociale) and provide a valid ID, proof of enrollment, birth certificate, address in France, and bank account details if you want to receive reimbursements directly. You can register at the local Sécurité Sociale office or online at Ameli.fr. Once registered, you will receive a Carte Vitale for reduced-cost healthcare services and reimbursement of eligible medical expenses.



Complementary health insurance*

The choice to subscribe to a complementary health insurance to top up the reimbursements of your medical expense is entirely up to you. It is not mandatory, but we do recommend it strongly.

We advise you check the health insurance you choose offers a civil liability valid for both your private and student life (required by law).

Going to a doctor or to the public hospital

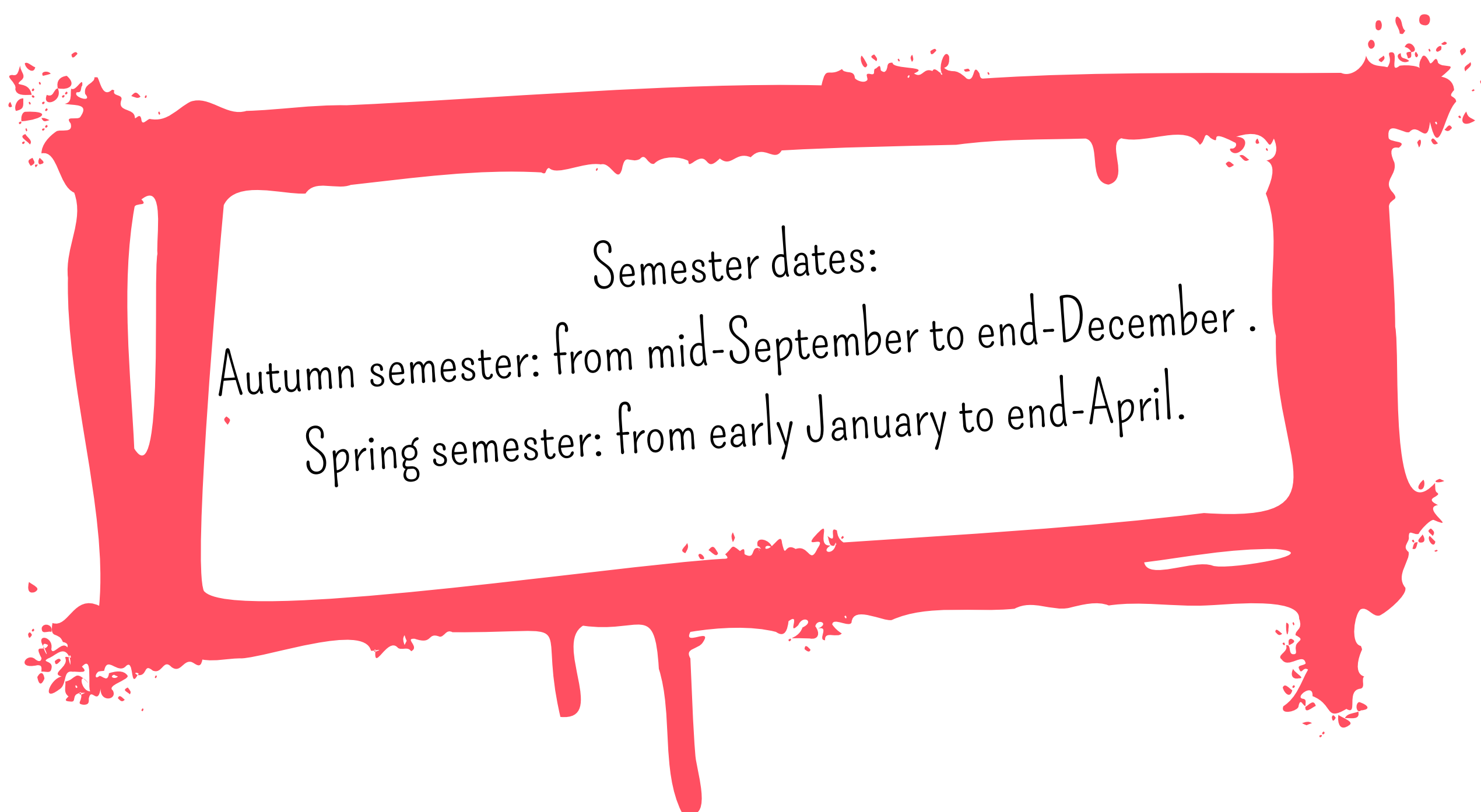
Students plugged into the French national health system will have a “Carte Vitale” which they will need to bring to every medical appointment (and to the pharmacy) as it is needed for the payment and refund process. It is advisable to check in advance, what payment methods a doctor accepts: country doctors do not always accept credit card payments, and may request cash.

Savignac-les-églises has a general practitioner, a pharmacy and other medical services. The public hospital of Périgueux is ~20 kilometres away from the school.

How to see a doctor: https://www.campusfrance.org/en/healthcare-student-social-security_

Opening an online account to use in France *

Foreign students in France can benefit from owning an online bank account, with options like N26, HSBC, Société Générale, and LCL available without a French IBAN requirement. Online banking streamlines financial management and simplifies reimbursements and makes necessary tasks like registering with the French national health insurance system known as "Sécurité Sociale" more convenient.



More information to prepare your stay.

and on the factsheet for estimated housing and food expenses on campus

Campus accommodation

On-site accommodation is available in one-person only rooms or shared rooms.

Rooms are typically ready-equipped with an en-suite bath-tub and toilet, and are furnished with the following:

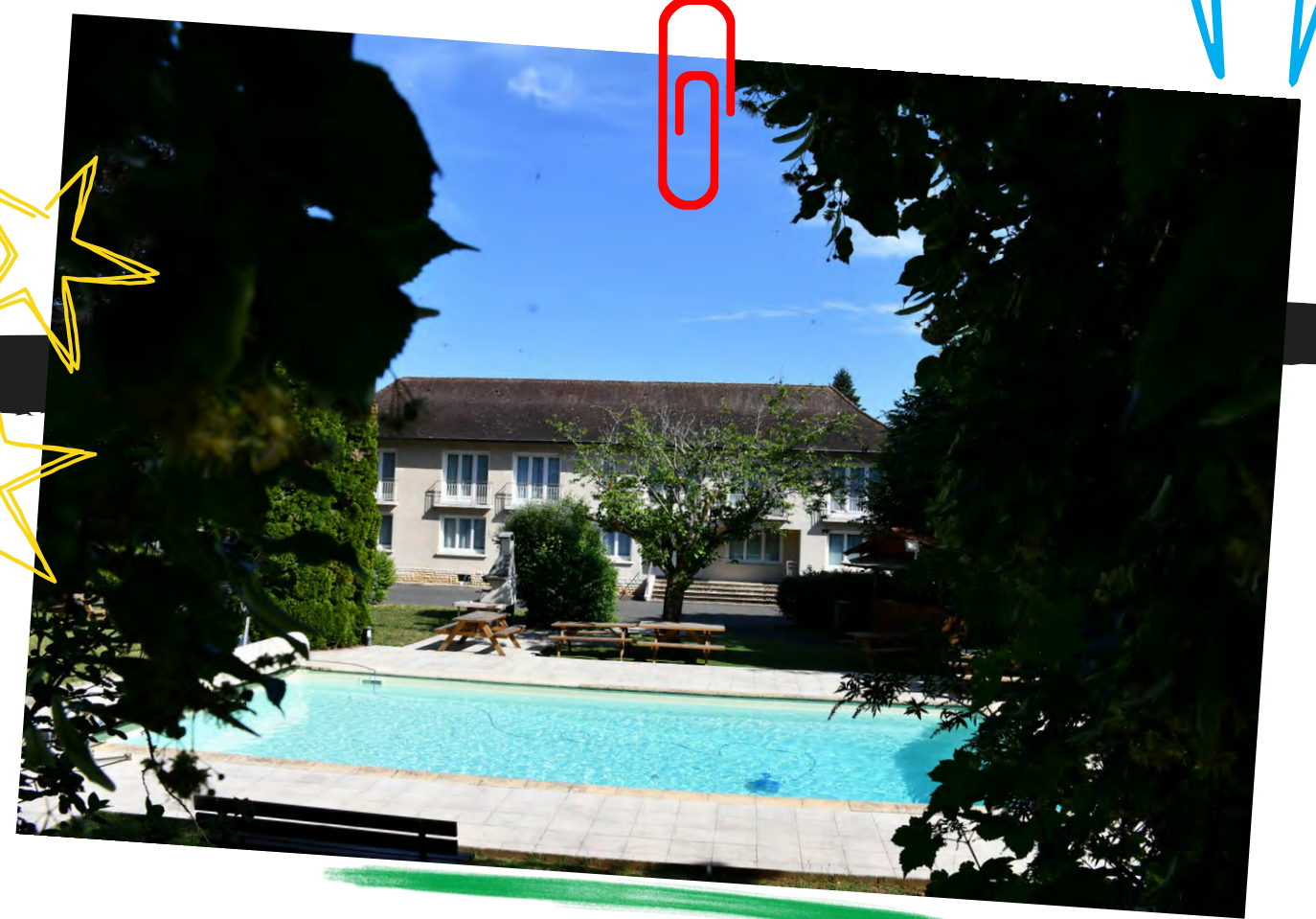
- 2 Single beds, chair, armchair, lamp, dustbin, wardrobe and shelves
- Water, electricity and wifi

Students can bring their own bedding and linen

Communal facilities include: a washing machine, dryer, and a refrigerator

Cooking is not allowed in the bedrooms

Please note, accommodation is limited and Savignanc works on a first come first serve basis; however, the school can recommend options to students wishing to find private accommodation.



Lunch meals at the refectory are compulsory (weekdays) for all students.





Paris (CDG) airport to Périgueux:
(several possibilities)

From Bordeaux airport:

Transfer to Bordeaux train station
(~35mins)



Périgueux train station (1h25)

Distances

*Ecole de Savignac...
out and about...*

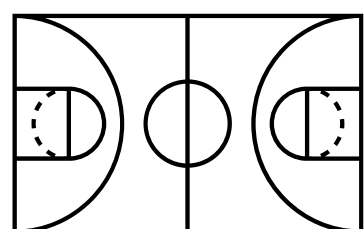
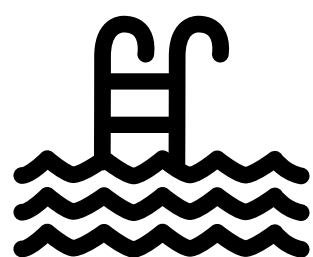
Périgueux historic city centre: 21 km



Shopping mall: 15 km

Village supermarket: 200m

Public pool: 19 km



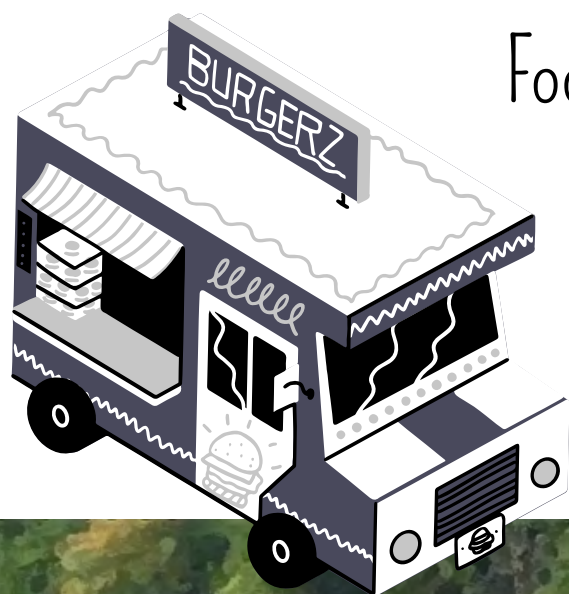
Tennis courts/soccer/
rugby field: 800m

Butcher/deli: 150m



Post office: 100m

Food truck:
300m



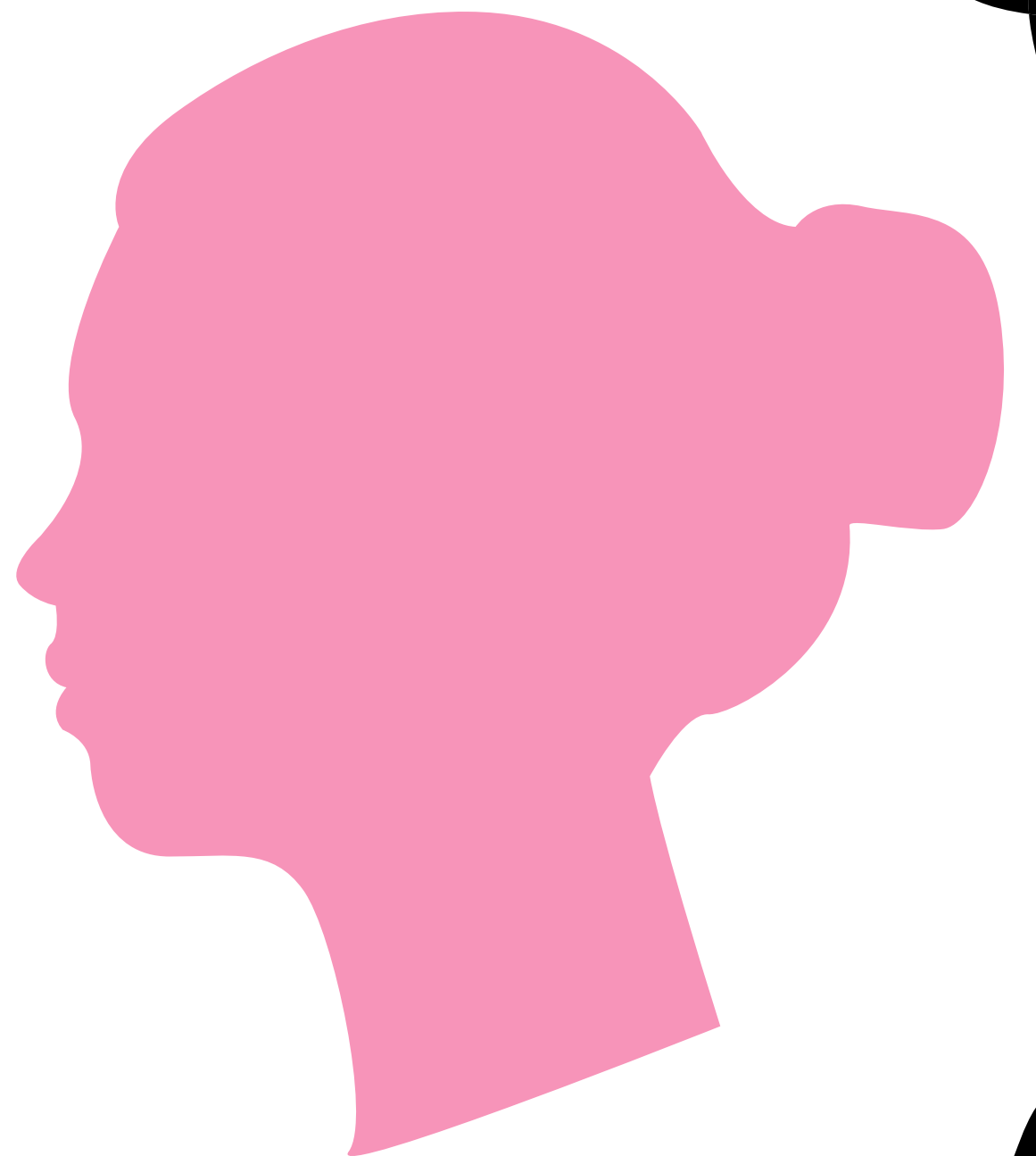
Bakery: 400m





International office
Head of mobilities:
Nadine Bentolila-Teulet
n.bentolila-teulet@ecole-de-savignac.com
+33 (0)553 056 068
+33 (0)684 656 076

Teaching and learning
Programme manager:
Pélagie Léger
p.leger@ecole-de-savignac.com
+33 (0)553 056 001



Resource Centre & Student
Support on Campus:
Vanessa Triau
v.triau@ecole-de-savignac.com
+33 (0)553 056 009





Une école

