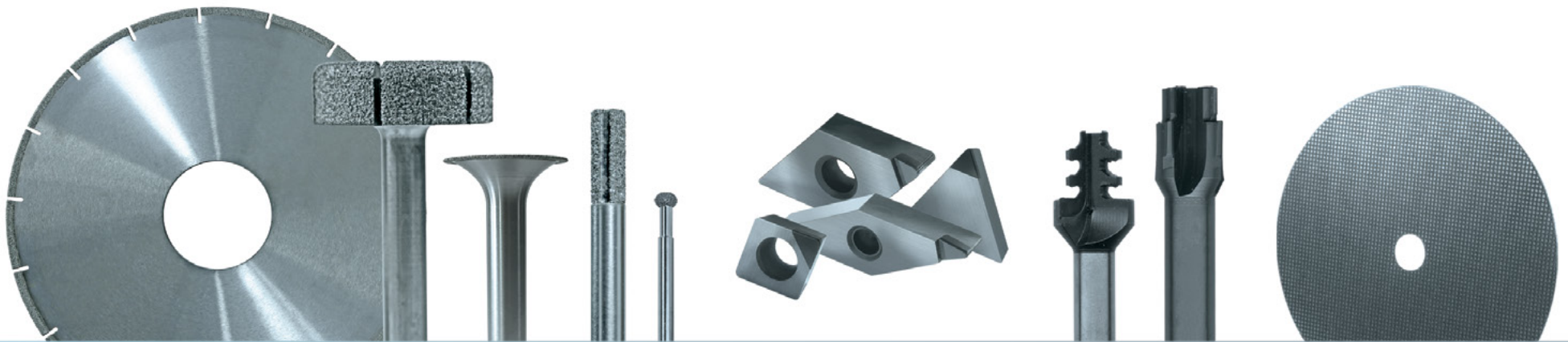


DIAMOND TOOLING FOR COMPOSITE MATERIALS

P.B.S.[®] DIAMOND TOOLING • PCD TOOLING • FLEXIBLE DIAMOND TOOLING



**abrasive
technology**
www.abrasive-tech.com



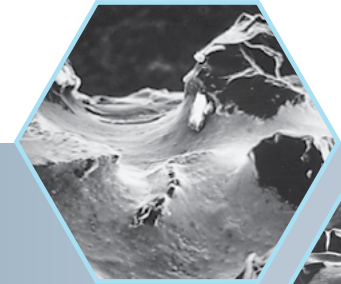


Abrasive Technology's diamond tooling is perfectly suited for composites as it provides comprehensive rough to finish solution, no matter what composite you're using. We specialize in the design and engineering of custom solutions for your unique application.

- ▶ **P.B.S.® Diamond Tooling** pg. 2
- ▶ **PCD Tooling** pg. 3
- ▶ **PCD Inserts & Wear Parts** pg. 4
- ▶ **Flexible Diamond Tooling** pg. 5

P.B.S.[®] DIAMOND TOOLING

First patented by Abrasive Technology in 1975, this original brazed bonding process chemically bonds superabrasive crystals to the substrate. This proprietary process promotes high diamond exposure with no stripping or peeling.



P.B.S.[®] Braze Bond
Diamond particles are
brazed to the substrate
and cannot pull out.



Electroplated

- Diamond crystal selection, including type, shape and size, is based on specific application
- Diamond selection creates uniform diamond surface for smoother cut and better finish
- P.B.S.[®] braze bond creates channels for coolant and swift removal of swarf
- Machines tough-to-cut composite materials and ceramics, providing fast stock removal and deep cuts
- Offers custom-manufactured tools in special non-standard sizes and forms for tight tolerances
- Allows for stripping and recoating the core

Abrasive Technology recommends P.B.S.[®] tools for non-metallic materials including:

- Fiberglass • Carbon Fiber Composites
- Friction Material • FRP • Graphite
- Graphite Epoxy • Honeycomb and other composites



P.B.S.[®] Diamond Grinding Tools

P.B.S.[®] Diamond Grinding
Wheel, Disc, and Saw Blade

PCD TOOLING

PCD (polycrystalline diamond) tools are abrasion resistant with the capacity to out-produce carbide tooling up to 100 times. Our diamond technology allows for custom designed flute, rake, and tip geometries.

Increased Tool Life

- Reduced cost per inch machined
- Random orientation of the diamond crystals means uniform hardness and abrasion resistance in all directions
- Controlled PCD manufacturing process provides consistent physical properties from part to part

Improved Machining Characteristics

- Excellent diameter tolerance control
- Reduced coefficient of friction versus tungsten carbide which minimizes heat buildup at the cutting edges
- Minimizes fiber tear-out and delamination
- Does not bond with work piece materials so edge build-up is minimal for improved surface finish

Reduced Cycle Time

- Cycle time reduced due to the thermal conductivity and heat resistance of PCD

Resharpenable

- Continued use of tool for multiple cycles after initial purchase
- Resharps/regrinds at reduced cost compared to new

Abrasive Technology recommends PCD tooling for the following materials:

- CFRP • CFRP/AL stacks • MMC
- Phenolic • Hard Rubber • FRP
- Aluminum alloys • Brass and Bronze alloys
- Zinc alloys • Magnesium alloys



High Performance PCD Tipped Inserts

For rough and finish machining of non-ferrous and non-metallic parts

- Longer PCD edge lengths allow larger depths of cut, reducing the number of passes - resulting in shorter cycle time and increased productivity
- Large PCD sections provide more holding power - resulting in more re-laps and fewer tip pull offs
- Polished PCD tops for keener edges and better chip flow
- Can be used to machine aluminum in both neutral and negative holders
- Edges ground on CNC equipment for consistency and quality finishes
- All inserts are manufactured to the latest ISO standard for assured quality



PCD Wear Parts

The life of PCD components is typically 100 times that of the carbide or HSS predecessor. The low friction coefficient of PCD, together with its ultra hardness, ensures that high levels of component accuracy are maintained over the component's life span.

PCD wear surfaces are used for:

- Vee Supports
- Backing Plates
- Gauging Fingers
- Gauging Points
- Back Stops
- Face Grinding
- PCD Rings

Advantages:

- Reduced whole life costs
- Reduced downtime
- Reduced changeover rates
- Increased component accuracy



PCD Combination Tooling

Designed to meet our customers' specific applications. For machining non-ferrous materials, including high silica aluminum and other exotic materials.

- Combines several tool operations in one pass
- Diamond cutting edge = high precision
- Long life = reduced downtime
- Reduced number of machining stations
- Reduced tooling stock holding
- Tamperproof tooling
- High component consistency

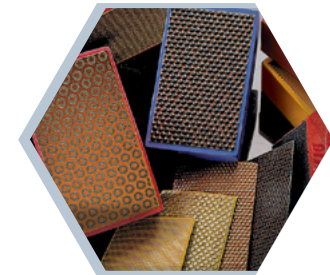
FLEXIBLE DIAMOND TOOLING

Our flexible diamond products are designed for contouring and shaping, as well as feathering honeycomb material or making delicate adjustments to a formed surface. There is little heat build-up and very little pressure is required. The cool, rapid, even cutting eliminates surface distortion, increases productivity and reduces costs.



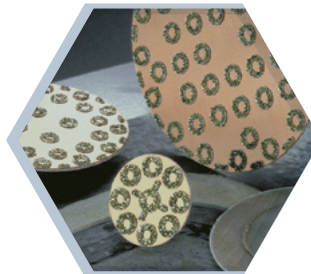
Genesis™ Diamond Discs, Belts and Orbital Pads

Designed to grind, hone and polish composite surfaces to a smooth finish



Diamond Handpads

Excel at abrading composites, ceramics, glass, plastics and stone. Available in firm or flexible bases, their ideal hand size allows the finishing of surface shapes and areas that are hard to reach with power tools



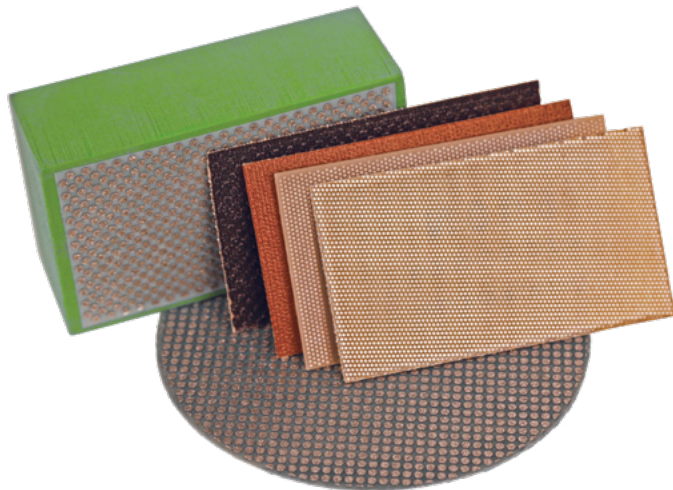
Tech-Lok™ Diamond Discs

Ideal for scarfing, shaping, deburring, feathering and finishing nearly all composite materials

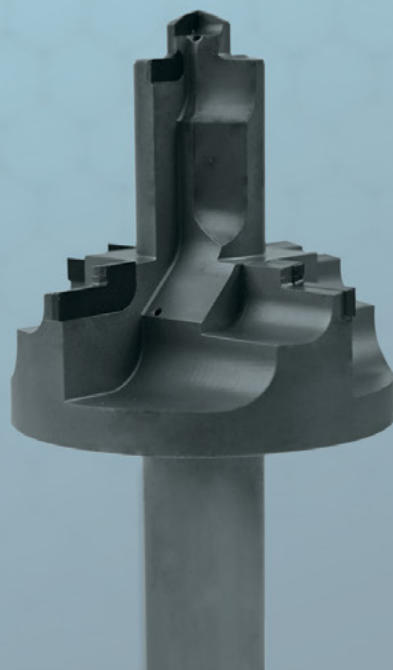
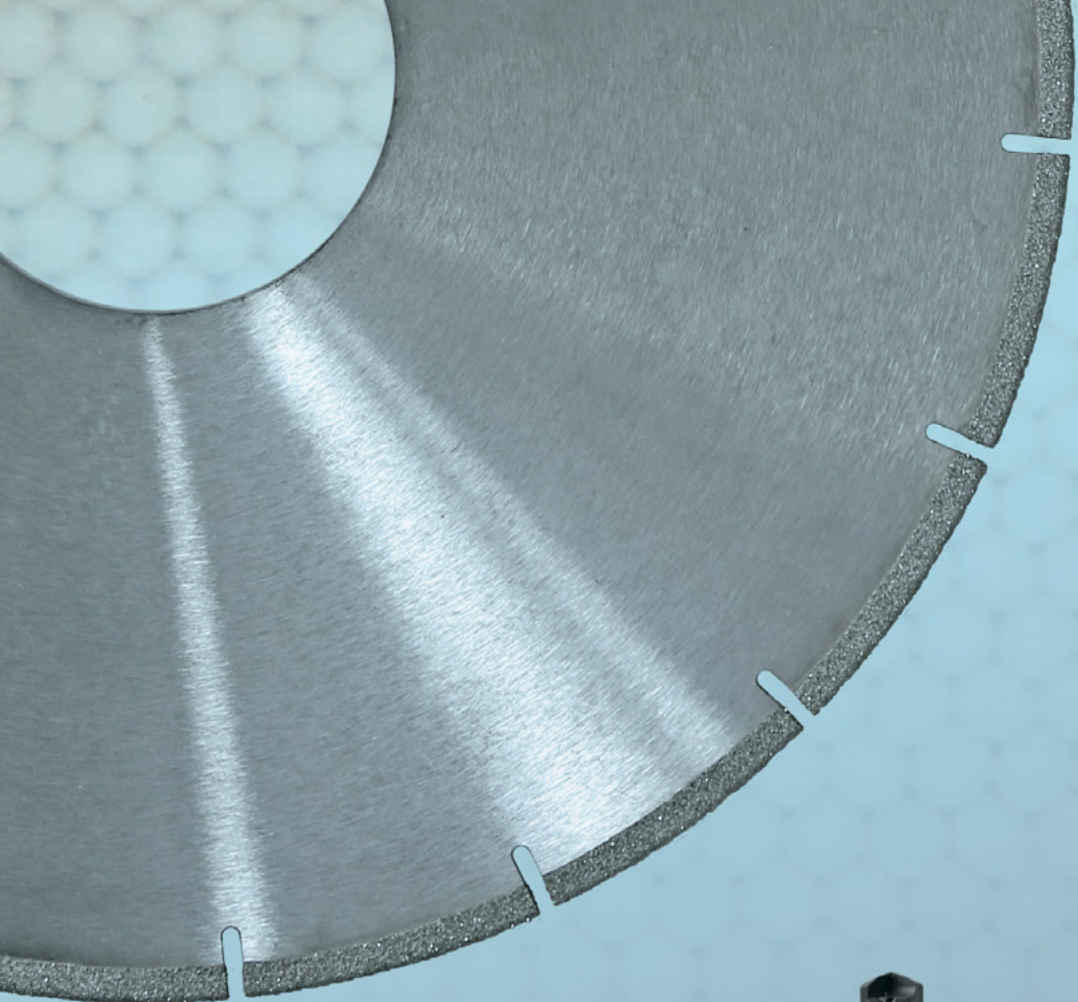


Baby-Rok™ Diamond Discs

Ideal for removing deep scratches in composites left during the cutting process



Flexible Diamond Discs and Pads



**abrasive
technology**
www.abrasive-tech.com

WORLD HEADQUARTERS
United States
P: 1.740 548.4100
F: 1.740 548.7617



EUROPEAN HEADQUARTERS
United Kingdom
P: 44.20.7471.0200
F: 44.20.7471.0202

Go to www.abrasive-tech.com to order
online or find a distributor near you.

© 2018 Abrasive Technology

REV 4.2018