

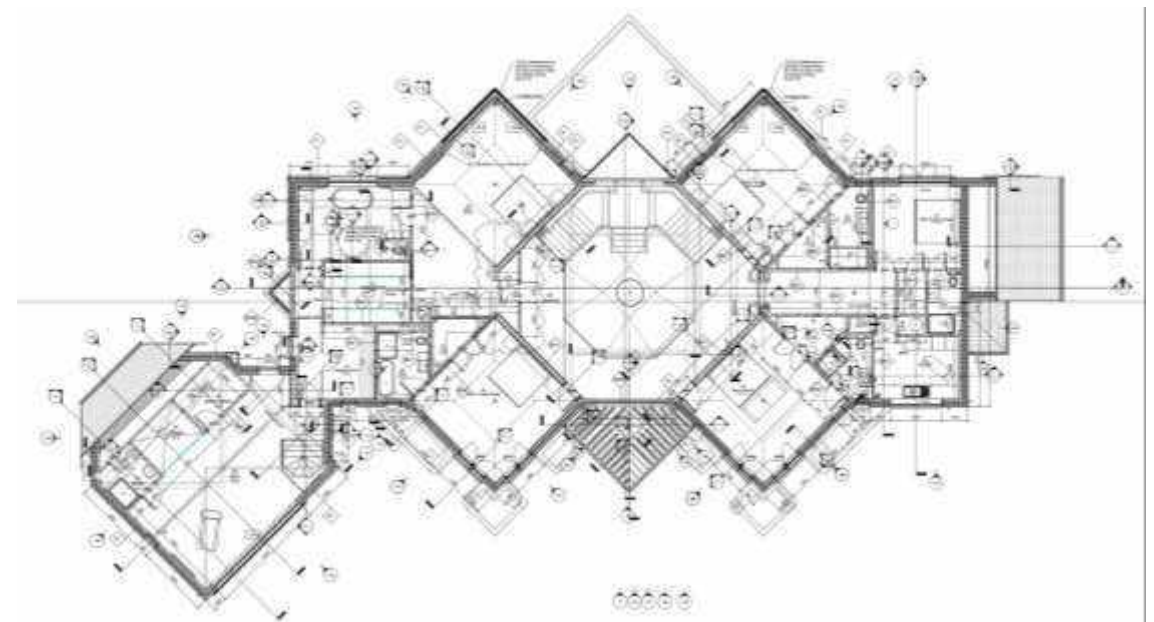
# LUXURY HOMES & INTERIORS

GRANTSBLINDS.COM





## LUXURY HOMES & INTERIORS



  
**GRANTS**  
*Est. 1982*  
BESPOKE WINDOW TAILORING

## Welcome to Grants Blinds

Thank you for showing interest in our company. For more than 35 years, we have provided products and services for the high-end residential environment working with architects, designers and their clients.

Our mission is to provide inspiration, expertise and bespoke solutions, adding **WOW** to any project.

The purpose of this publication is to share some of our experience with whole-house projects and luxury garden rooms.

The demanding requirements of today's lifestyle require collaboration between the client, architect, main contractor, interior designer and other associated trades to create a home that works for you and is a pleasure to live in.

Please do not hesitate to contact us if we can help you with your project.

Thank you







GRANTS

*Est. 1982*

BESPOKE WINDOW TAILORING





Unique Solutions With  
Leading Brands



BL'NDSPACE®

LUTRON®

RENSON®

SilentGliss





At the core of Grants, we are motivated by smart designs and projects. Being among the global thought-leaders in residential shading solutions, we are privileged to work with leading architects and designers. This combined experience enables us to add unique and inspirational solutions to any project.



## Working with Grants Blinds

Window dressings are often the finishing touches to a successfully executed interior design. While furniture, flooring and wall finishes all play a big part – it is not until the window dressings are complete that a room really feels dressed and ready to be lived in.

With the increased use of architectural glazing in luxury projects driving the need for concealed blinds, along with the advancement of motorisation and home automation systems, property designers who want to ensure an up-to-date and future proof property must make the necessary provision in the overall design scheme as early as possible.

Grants' Design Consultants and Project Managers work with client teams from the very initial project inception ensuring a seamless window tailoring solution for any new build or refurbishment property. This includes taking into consideration all necessary concealment systems and electrical and control requirements for the blinds and soft furnishing.

Concealment solutions are often desired but space needs to be created within the structural design of the building in the earliest project stage. Likewise, to future proof for electric blinds, blind specification and control systems need early consideration, while final details can be dealt with later in the project.

Where possible, as a first step, an online client/architect meeting is recommended with an expert Design Consultant. The purpose of this meeting is to consider the priorities for different areas of the property, with examples close to hand.



## Project Steps

The Design Consultant will guide you through a typical project decision process:

1. Discuss client priorities and preferred styles for agreed treatments to different rooms
2. Discuss the needs for window treatments based on the use of each room or area – decoration, daytime privacy, room darkening or blackout, shading, etc.
3. Discuss what options there are for concealment solutions
4. Discuss blind control and home automation system integration options

Following the meeting, Grants will provide a detailed costing proposal for approval. Grants then work with the client team to provide the necessary information and design feedback as required. Resources available:

1. A library of drawings in CAD and pdf format.
2. Wide range of product and fabric samples.
3. Full planning and technical support.
4. On-site consultation as required.

Drawings are reviewed and agreed as the design develops. Blind specifications and concealment solutions need to be agreed in principle, however blind fabrics can be decided at a later stage.

As the project progresses onsite, a dedicated project manager oversees each aspect of window tailoring fulfilment. A schedule for all products is created and requires sign off at various stages throughout the project, prior to products entering manufacture.

1. The first schedule for approval is the blind concealment boxes. These are supply only, and the Grants Project Manager often visits site to review or train for installation.
2. Wiring diagrams and control specifications discussed and agreed as required.
3. The concealment boxes should be onsite in time for inclusion as shown in the project drawings. Typically, the blind boxes should be onsite around the same time as the windows.
4. Once concealment boxes are installed, first fix electrics and cabling is provided to the box. This should be confirmed with the Grants Project Manager and the relevant sub-contractors.
5. Once all wet works, cabinetry and other timber work is finished, a survey for blind manufacture is carried out.
6. Product specifications would need to be finalized at this stage and sign off will be required prior to commencement of manufacture.
7. Window tailoring products should be some of the last items to be completed on a project and this is carefully coordinated with the site team. This includes setting the start/stop position for any motorised products, and any final onsite adjustments to the soft furnishing products such as roman blinds and curtains.
8. Assistance during control system commissioning and final handover meeting attended if required.



# Ultimate Light Control











**Product Specification**

**Blinds** – Lutron® motorised roller blinds made using Antracite coloured Glenheim Screen 10% material. Concealed with Blindspace®.





**Product Specification**

Blinds – Lutron® motorised roller blinds made using Antracite coloured Glenheim Screen 10% material. Concealed with Blindspace®.





## Delighted Clients

From first meeting to your second or further projects with us, our professional team are accountable to provide you with the appropriate knowledge, technical support and products, with a service level you need and expect. The majority of our projects stem from client referrals, verifying our clients appreciation of our services.



## Product Specification

**Blinds** – Lutron® motorised roller blinds made using Antracite coloured Glenheim Screen 10% material. Concealed with Blindspace®.





## Quality Products

Combined with our expertise, we offer leading brands to provide the very best solutions. Working with Lutron, Silent Gliss, Renson, Somfy and Blindspace, we provide the products most suited to your specific project. We manufacture as well as procure specialist products and we offer a minimum 5-year guarantee on all products.



### Product Specification

**Blinds** – Lutron® motorised dim-out roller blinds with side channels, made using blackout material. Concealed with Blindspace®.

**Curtains** – Voile curtains on recessed Lutron® motorised curtain tracks.





**Product Specification**

**Blinds** – Lutron® motorised dim-out roller blinds with side channels, made using blackout material. Concealed with Blindspace®.

**Curtains** – Voile curtains on recessed Lutron® motorised curtain tracks.



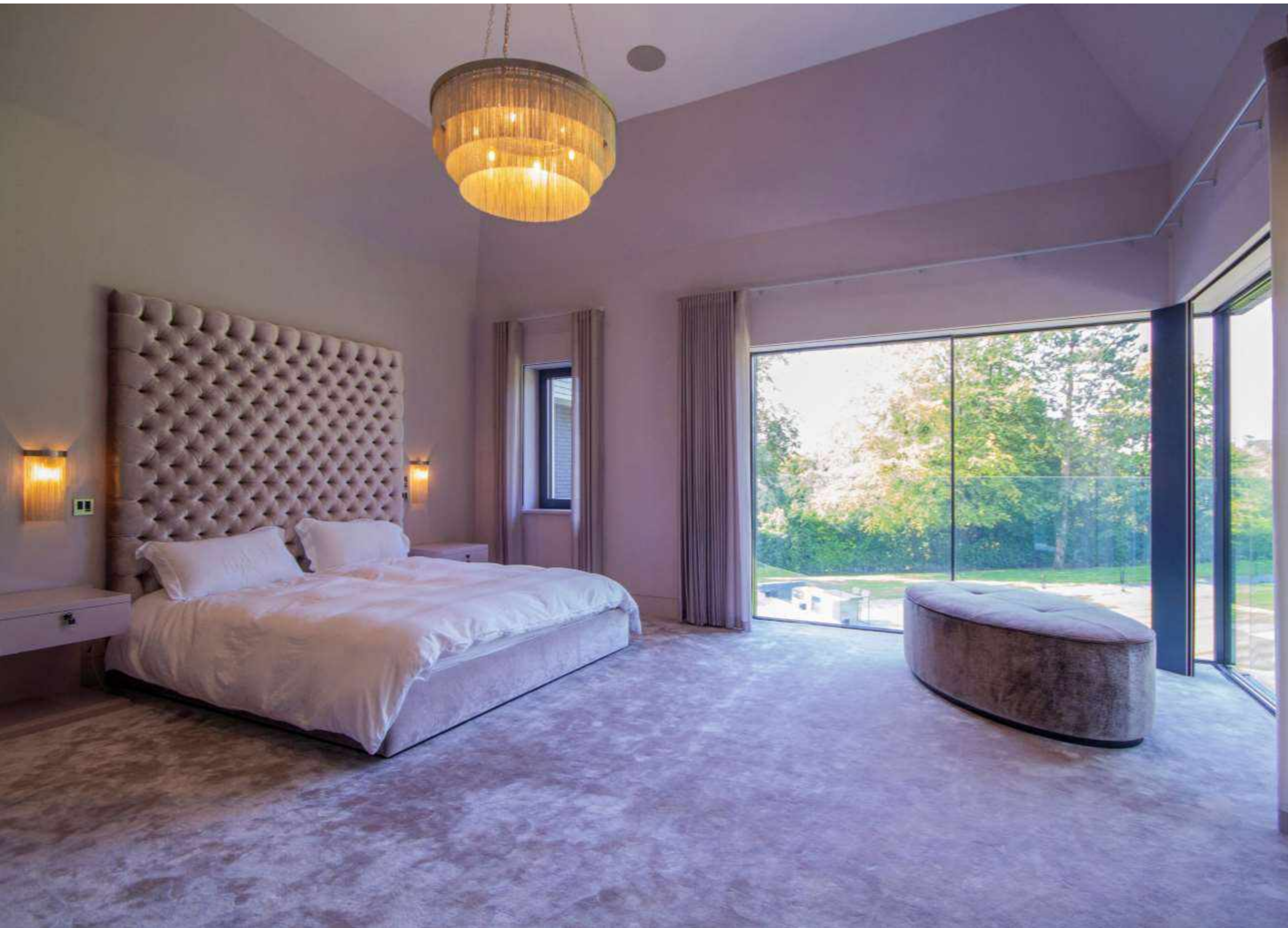


**Product Specification**

**Blinds** – Lutron® motorised dim-out roller blinds with side channels, made using blackout material. Concealed with Blindspace®.

**Curtains** – Voile curtains on recessed Lutron® motorised curtain tracks.





## Professional Team

We have a team of trained professionals to assist at every stage of your project. Working closely together from the early design stage, sales handover, project management through to project completion. Our team will liaise with architects, designers, contractors, AV, clients and/or their representatives during the project developments.



## Product Specification

**Blinds** – Lutron® motorised dim-out roller blinds with side channels, made using blackout material. Concealed with Blindspace®.

**Curtains** – Voile curtains on manual hand-pulled curtain poles.













## Fabric Colour Choices

The right choice of colour for your screen roller blind will make a difference to the visibility.

Dark colours will increase visibility allowing one to see more through the blind than a lighter white colour.



## Product Specification

**Blinds** – Lutron® motorised roller blinds made using white coloured Glenheim Screen 10% material. Concealed with Blindspace®.



# Award Winning Minimalism



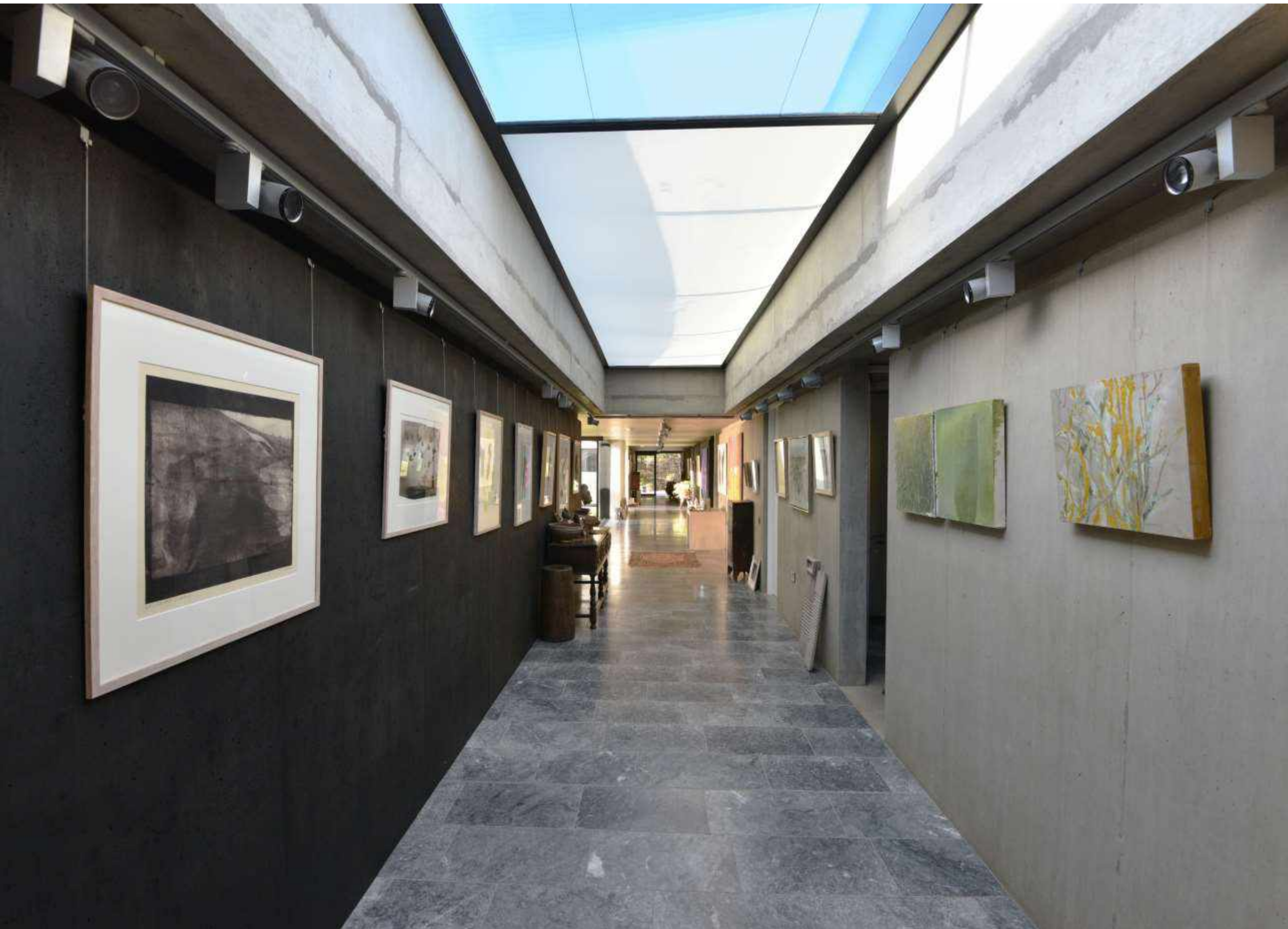




**Product Specification**

**Blinds** - Fully cassetted surface-mounted box finished in matching Custom RAL to window structure. Blinds motorised and made using Glenheim Screen material.





## Award-Winning Projects

We are pleased to have worked on many award winning projects, chosen for their unique contribution, how the design has worked with the surroundings it is set within or even for its functionality and innovation. This home was simply amazing in the clever way light and view filtered throughout the property. The blinds made it practical to live there.



### Product Specification

**Skylight blind** - Retrofitted 2m x 13m FRE Zipped blind on support wires and made using Stornoway Screen Material.



# Unique Home Underground





**Product Specification**

**Blind** – Surface-mounted motorised roller blind with Aintree sheer material.

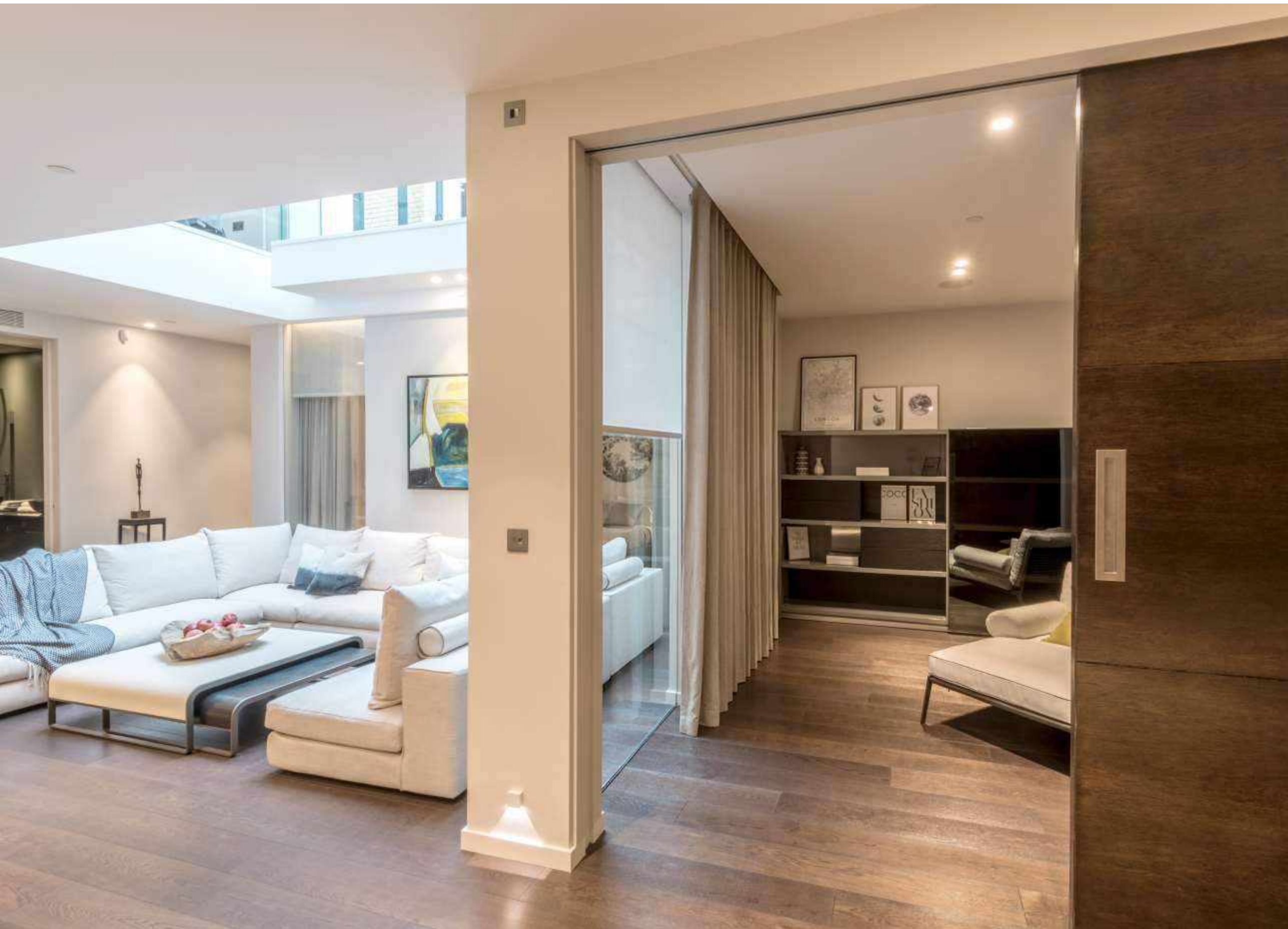




#### Product Specification

**Skylight blind** – Dual-Motor Tensioned Grants FRE Blind with minimal guide wires. Glenheim Screen 1% and housed within a Blindspace® concealment frame.





## Luxury Homes

Living the Dream doesn't just happen, it takes a dedicated team to build from the foundations up.

Including the Grants team from the very earliest project stages is recommended so that the maximum choices are available.



### Product Specification

Curtain tracks - Recessed and motorised.  
Curtains - Plain heading, lined & interlined.  
Roller blinds - Motorised Glenheim Screen Material.







# Modern Country Home











## Unique Homes

The WOW of a silent automated day and night set of blinds, totally concealed, is hard to be over-stated. At the press of a button, the setting on your handheld device means the simplest of furnishings emerge effortlessly to provide the solution desired.



### Product Specification

**Blinds** - Motorised roller blinds made using Glenheim Screen 10% material. Concealed with Blindspace®.





## Concealment Specialists

Grants are global thought-leaders of high-end residential blind concealment, working closely with Blindspace to develop innovative concealment systems.

Your home can be future proofed for shading enabling you to bring wiring and control leads to these Blindspace® boxes. With these built into the superstructure you can work through the many other priorities knowing this is done.



### Product Specification

**Blinds** - Motorised roller blinds made using Glenheim Screen 10% material. Concealed with Blindspace®.



# State-of-the-Art Lutron Home











## Tradition

Blinds have been concealed in many ways for a long time. Here both cornice and pelmets have been cleverly included by the client. By working closely with Grants during construction gives well balanced results of blinds when you need them and out of the way when not required.



## Product Specification

**Vale lantern blinds** - Motorised French Pinoleum - Chatsworth material.

**Windows** - Matching French Pinoleum blinds behind Client cleverly designed pelmets of different design.





## Genuine French Pinoleum Experts

From our earliest days we have worked with genuine French Pinoleum produced by Ballauff® near Paris – shown here in a beautiful Vale Garden Houses Building. Using a number of base weaves and some standard colours Grants can line and/or custom paint these blinds to work with an interior décor. French Pinoleum is proving a popular choice with the home as well as the garden rooms it was traditionally known for.



### Product Specification

**Roof blinds** - Motorised French Pinoleum Roman blinds made using Grants Chatsworth weave.

**Window blinds** - Motorised French Pinoleum Roman blinds made using Grants Chatsworth weave.



# Double Blinded Luxury



**Product Specification**

Multiple light control  
External - Wooden Louvres.  
Internal - Singlepleat Sheers.  
Internal - Honeycell Duette® Blackout Cellular within side channels to reduce light ingress.





## Double Blinds

Every project is unique and has the clients own personal touches wherever possible. This homeowner had many gable areas but wanted both screen and as near to blackout as possible at all windows. To achieve this mini side channels were built in to reduce light seepage to an absolute minimum when required.



### Product Specification

Multiple light control  
External - Wooden Louvres.  
Internal - Single pleat Sheers.  
Internal - Honeycell Duette® Blackout Cellular within side channels to reduce light ingress.





## Full Flexibility

At the press of a button, the setting on your handheld device means the simplest of furnishings emerge effortlessly to provide the solution desired.

For increased security, central control systems can operate your blinds, making it appear you are home whilst away.



## Product Specification

Multiple light control  
**External** - Wooden Louvres  
**Internal** - Single pleat Sheers  
**Internal** - Honeycell Duette® Blackout Cellular within side channels to reduce light ingress





Rejuvenated  
London Home









## Unique Rooms

Every window needs something, whether it is to manage privacy, solar heat gain or insulation. The use of the room can be limited without a tailored window treatment solution.

An initial window treatment planning meeting can ensure that you make the right decisions for your property.



### Product Specification

**Curtain tracks** - Motorised and curved to suit the bay window.

**Curtains** - Lined and interlined with Pinch Pleat Heading.

**Roller blinds** - Aintree Voile material.



# Extended London Home











## Concealed Blinds and Awnings

For this project, Grants worked with the architects from the earliest stages for a simple hidden solution for blinds as well as external awnings.



### Product Specification

**Blinds** – Motorised roller blinds made using Glenheim Screen 10% material. Concealed with Blindspace®.

**Awning** – Motorised Warema awning concealed when not in use.





Plantation Style  
Luxury





## In Touch

The inclusion of Grants blinds within your property is often the beginning of a longer-term relationship. We like to keep in touch with our clients - offering a full maintenance Platinum service providing regular maintenance visits to help keep blinds in good working order. When our client moves or extends we often find ourselves involved again and again.



## Product Specification

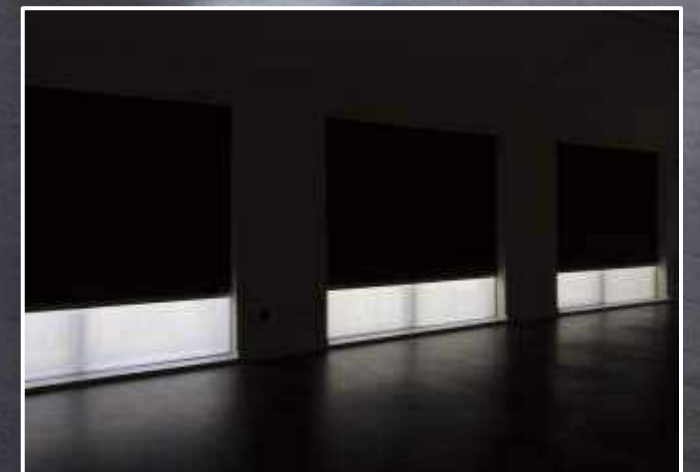
Windows - Basswood Painted Plantation Shutters installed by Grants Craftsmen.





Refurbishment  
Projects









**Product Specification**

**Blinds** – Dual motorised blinds for day/night solution. Stornoway blackout and Aintree voile fabrics specified.

**Concealment** – Dual custom boxes on all four sides of the window to provide maximum blackout solution.





#### Product Specification

Blinds – Lutron® motorised roller blinds made using white coloured Glenheim Screen 3% material. Concealed with Blindspace®.





**Product Specification**

**Blinds** – Lutron® dual motorised blinds for day/night solution. E-screen and blackout material.

**Concealment** – Left window headbox only. Right side, headbox with exposed side channels.

**Skylight** – Complete Blindspace® frame.





## Cinema at Home

Staying at home – professional entertainment can now be enjoyed at home. With planning this new living space can work equally well as a sunny living room or, with the integrated concealed blackout blinds, a home cinema.



### Product Specification

**Blinds** – Lutron® dual motorised blinds for day/night solution. E-screen and blackout material.

**Concealment** – Left window headbox only. Right side, headbox with exposed side channels.

**Skylight** – Complete Blindspace® frame.



# Kitchen Extensions



## Product Specification

Unique 7m x 4m opened corner.  
Blindspace concealment system houses motorised roller blinds in screen material.





## Bespoke Solutions

The "no blind" appearance was what the client enjoyed, but the large areas of glass meant blinds were needed if the home was to be comfortable.

The design included powder coated pelmets to match the sliding door structure which means the client has what he wanted in appearance and blinds when he needs them.



### Product Specification

**Roof blinds** - Honeycell Duette® Cranbourne non Blackout material.  
**Gables and windows** - Matching blinds.  
**Concealment** - Powder coated BSD Pelmet and trims.





## Prepare for Success

By discussing your project we can exchange ideas and visuals over the telephone or in one of our showrooms.

With the growing trend towards large living rooms and glazing there is a parallel trend for minimalism. Preparation for fully concealed blind solutions means you can cover the windows without intruding on the design. Add soft furnishing if you wish at any time.



### Product Specification

**Roof blinds** - Honeycell Duette® Cranbourne non Blackout material.

**Gables and windows** - Matching blinds.

**Concealment** - Powder coated BSD Pelmet and trims.





## Smart Shading

At the press of a button, the setting on your handheld device means the simplest of furnishings emerge effortlessly to provide the solution desired.

Simple design, simple solutions. Blinds, with side channels coloured to match the structure were housed within the house wall when not required. The right blinds make any scheme work.



## Product Specification

**Roof** - Grants GRE zipped and side channeled blinds custom powder coated to match structure. Glamis Screen material. Mechanism concealed into the wall.





## Shading When Required

With the growing trend towards large living rooms and glazing there is a parallel trend for minimalism. Preparation for fully concealed blind solutions means you can cover the windows without intruding on the design. Add soft furnishing if you wish at any time.

In this project, Grants were able to install zipped blinds that had no visible guide wires.



### Product Specification

**Roof** - Grants GRE model tensioned and zipped blinds housed within concealment frame. Blackout material.

**Windows** - Roller blinds housed within concealment headbox - screen material.





Feature Shaped  
Windows





## Master Bedroom Gable Window

Increasingly popular, these feature windows don't need window dressing for aesthetic reasons however for the rooms to be practical, privacy and/or blackout is often needed.

Grants have developed unique reliable solutions where blinds can be concealed and provide maximum blackout when required.



### Product Specification

**Blinds** – Wide-width, bottom-up/top-down Honeycell Duette® blinds in Cranbourne blackout material.

**Concealment** – Bespoke Blindspace® S Pelmet and concealment boxes around perimeter.









#### Product Specification

**Blinds** – Top-down Honeycell Duette® blinds with side channels, made in Cranbourne blackout material.

**Concealment** – Bespoke sloping Blindspace® concealment boxes.



# Awkward Shaped Windows



## Product Specification

**Blinds** – Bottom-up Honeycell Duette® roof blinds with guide wires, made in Cranbourne blackout material. Between bar installation.





## No Need To Compromise

Our experience in the specialist blind field means you don't have to compromise. What ever your project demands from shapes, structural glass or exceptionally large dimensions, one of our expert team of advisors will be pleased to talk you through the options at one of our showrooms.



### Product Specification

**Roof blinds** - Shaped Honeycell Duette® Blackout blinds in Pebble Grey colour.

**Windows** - Matching shaped blinds open and not visible in photo.



# Luxury Garden Rooms











## Horizontal Installation

Horizontal blinds, when planned to be concealed within the structure, are a popular alternative to blinds installed following the roof line.

These installations benefit from concealment frames to hide the bulky mechanisms.

This option creates a coffered ceiling effect.



### Product Specification

**Skylight** - Grants FRE Tensioned roof blind supplied with concealment frame installed during construction.

**Curtain poles** - Finished 30mm metal pole with parting rings and brackets.

**Curtain** - Soft Linen unlined material, Wave heading.





## Installations That Clients Love

Fabulous results are achieved because our clients, their architects and interior designers have worked with us as a team to achieve what the client is wanting.

The end result is important to us, and the success of any design scheme is that it works and that the client is thrilled.



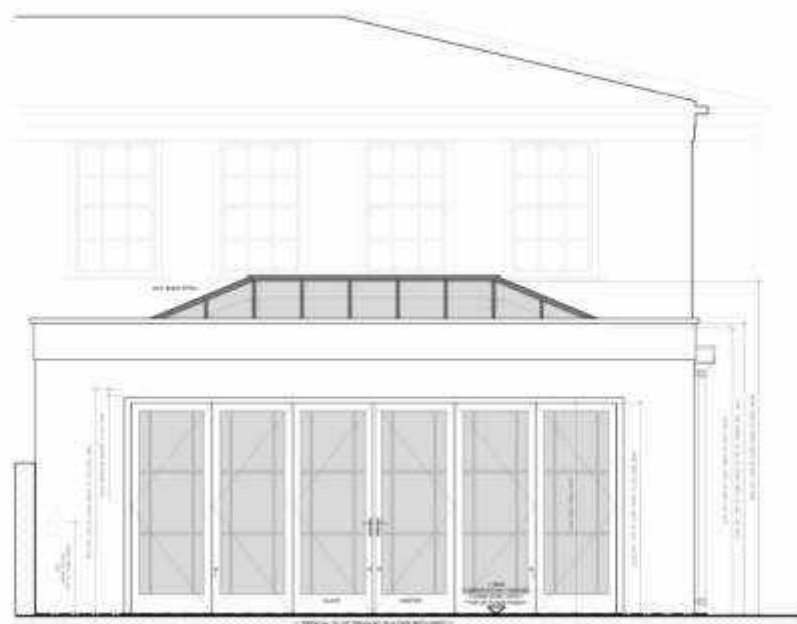
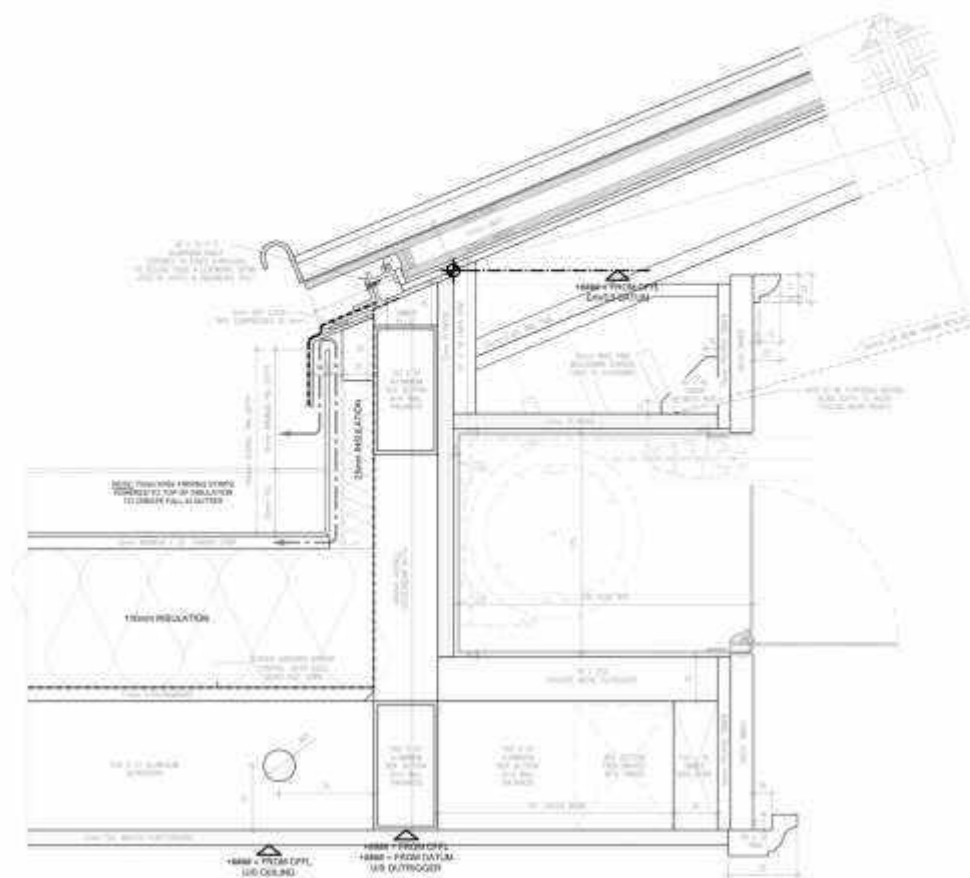
### Product Specification

**Skylight** - Grants FRE Tensioned roof blind supplied with concealment frame installed during construction.

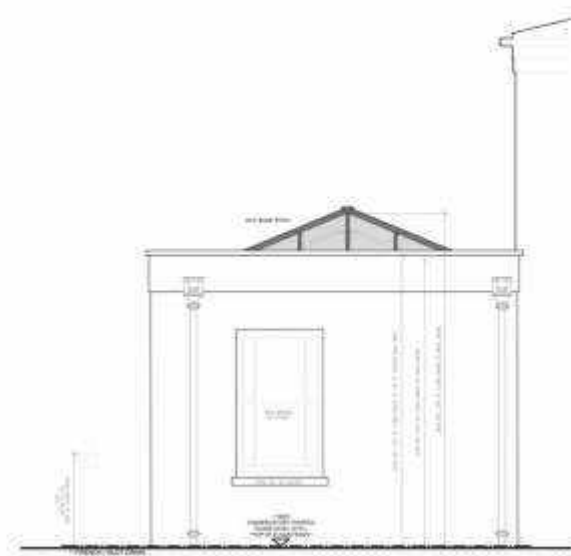
**Curtain poles** - Finished 30mm metal pole with parting rings and brackets.

**Curtain** - Soft Linen unlined material, Wave heading.

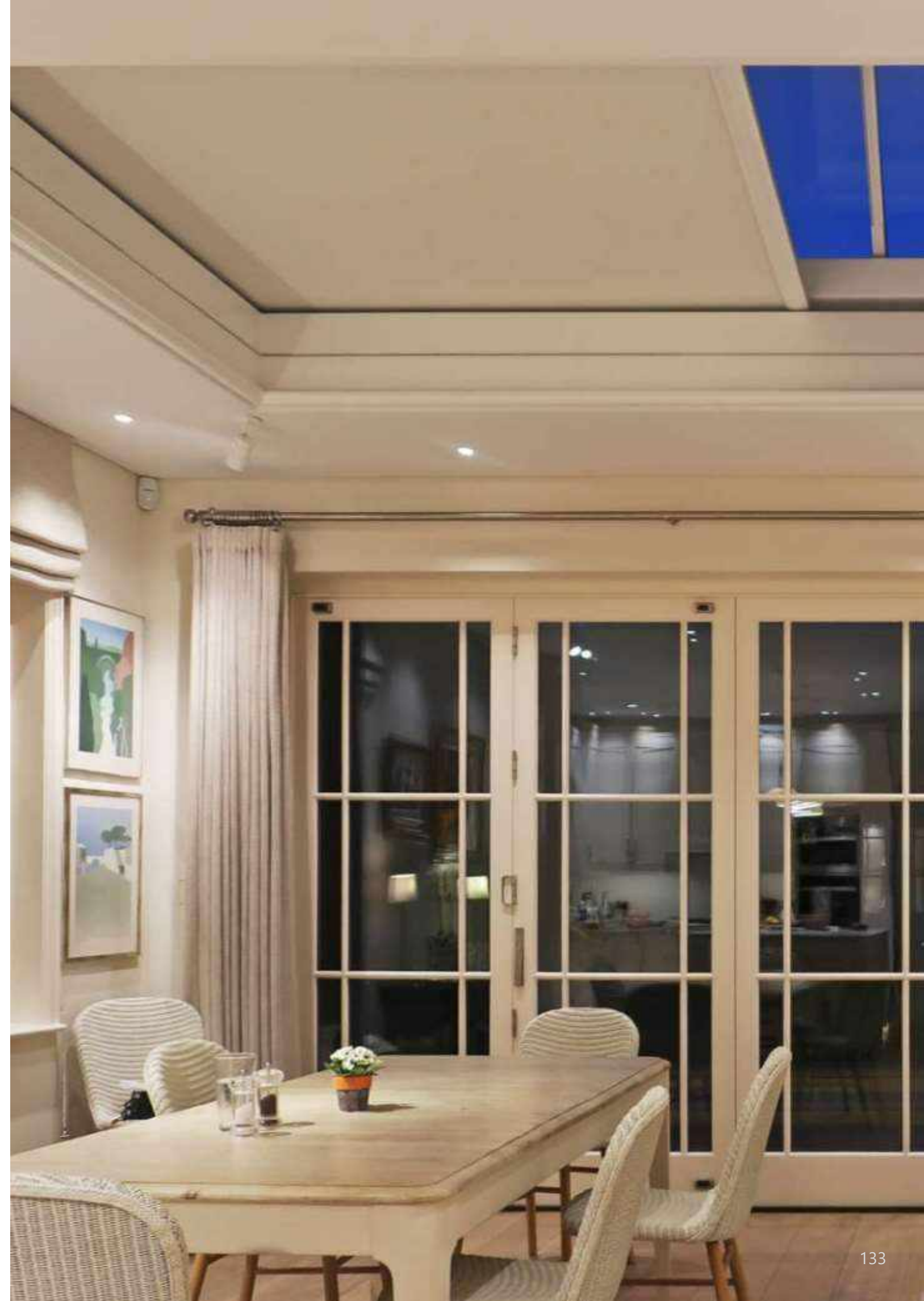




WEST ELEVATION



SOUTH ELEVATION







## External Awnings

Enjoy the great outdoors as an extension to your living space. Large awnings need to be planned during construction to provide the support needed.



### Product Specification

Awning – Warema® cassetted awning in striped material.



## Meeting in the Middle

Retro-fit installation installed above decorative cornice to achieve designed and integrated set of blinds. Blindspace® frame has been powder coated to match orangery structure.



### Product Specification

**Skylight** – Twin Grants FRE tensioned roof blinds in Goodrich screen material, supplied with custom painted concealment frame.







## Visible Only When Used

If you are doing a complete project it makes sense to plan and integrate. To retrofit blinds in a newly completed project is a missed opportunity for perfect results.

You should never start a project without a clear idea for its completion. We can help you with this.



### Product Specification

**Windows** - concealed roller blinds made using Glenheim Screen material.

**Roof** - matching roller roof blinds with minimal guide wires.





## Contemporary

We are committed to continuously improve, using the experience gained from earlier projects. Here traditional French Pinoleum blinds are successfully installed to blend the modern and the traditional of the glass and the stone. The side channels of the skylight blind and the stack of the window blinds could also have been recessed within the structure if required, proving an even neater solution.



### Product Specification

**Roof** - SPS Roman Blind with side channels and no supporting wires. Made using Grants Farmhouse Door, French Pinoleum Flatweave.

**Windows** - Matching motorised Roman blinds.





## "...All The Difference..."

Bringing the right people together with your project makes all the difference. Most of our enquiries come through natural referrals from professional companies working with the same clients. With the advancement of technology, projects are no longer a single company solution. We work closely with building control professionals to provide complete ease of operation throughout your project.



### Product Specification

Window blinds - Recessed French Pinoleum motorised blinds made using Grants Farmhouse Door colour Flatweave.





"...Extremely Helpful..."

Our clients are usually busy people and we are here to help! Due to the fact that each project is 'special' we recommend a Client meeting at the outset is vital. At this time, we will seek to understand what are the clients aspirations and priorities and from this platform we are then best positioned to advise and realise clients' aspirations and expectations.



#### Product Specification

**Roof** - French Flatweave Pinoleum Blinds in Farmhouse Door colour with Solar Reflective Lining for increase performance.

**Window blinds** - Matching French Flatweave Pinoleum roman type blinds.

Note: Blinds were Glass Bonded to the structure.









**Product Specification**

**Roof Blinds** – Motorised French Pinoleum blind made using Chatsworth material.

**Window Blinds** – Roman style blinds made using Jim Thompson material. Screen roller blinds made Glenheim screen material.





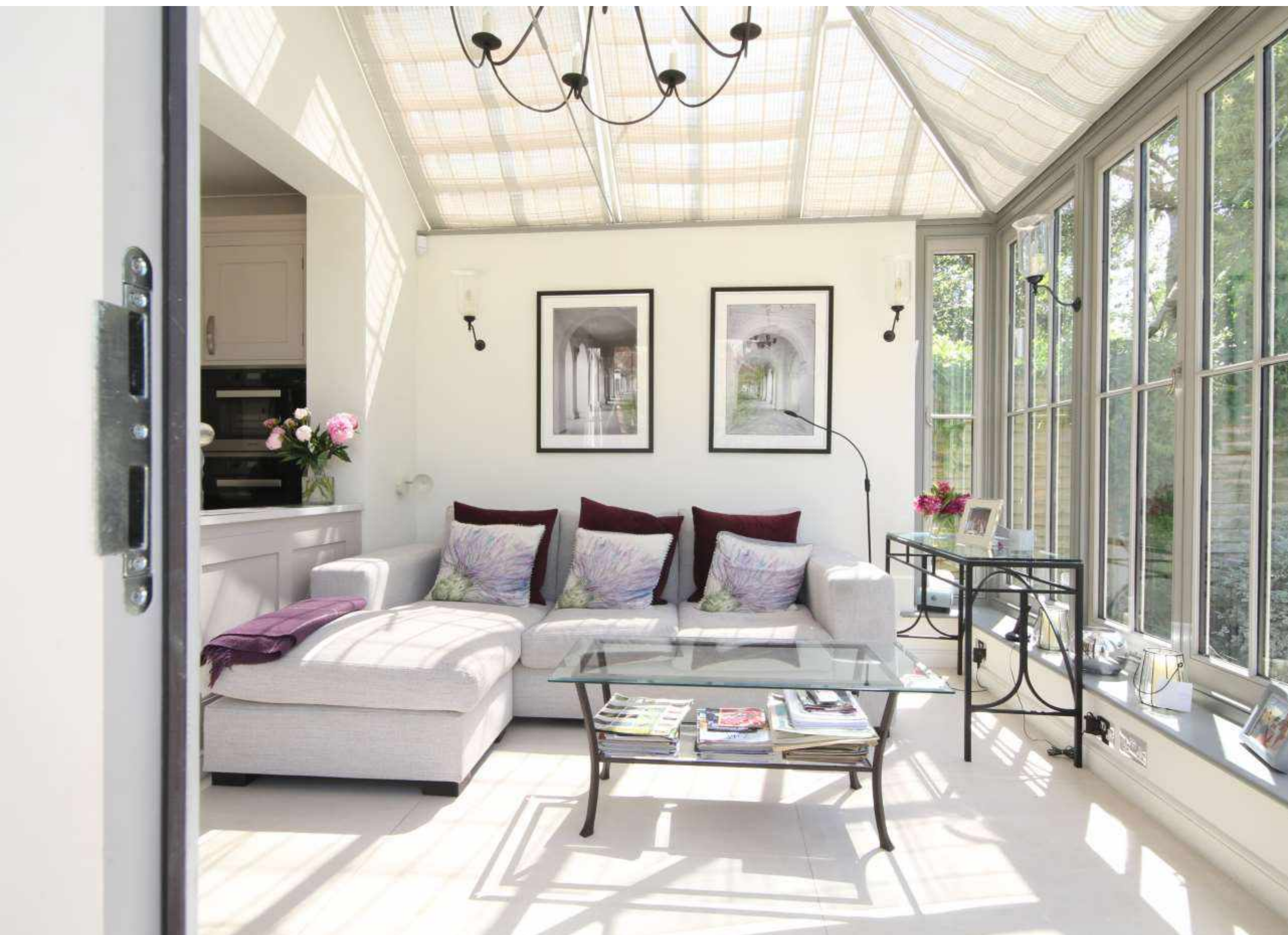
David Salisbury Luxury Garden Room - Oxfordshire

#### Product Specification

**Roof Blinds** – Motorised French Pinoleum blind made using Chatsworth material.

**Window Blinds** – Roman style motorised French Pinoleum blind made using Chatsworth material.





"...We Love Our New Blinds..."

It is not always possible to get to see all completed installations but each time we do it fills us with pride that the end Client is thrilled with what we have done. They love everything down to the detail. It is our responsibility to give you the best advice you could possibly get.



#### Product Specification

**Roof** - Motorised French Pinoleum blinds made using original Roundweave material custom painted to match clients Marston & Langer Paint colours.





## Colonial Style

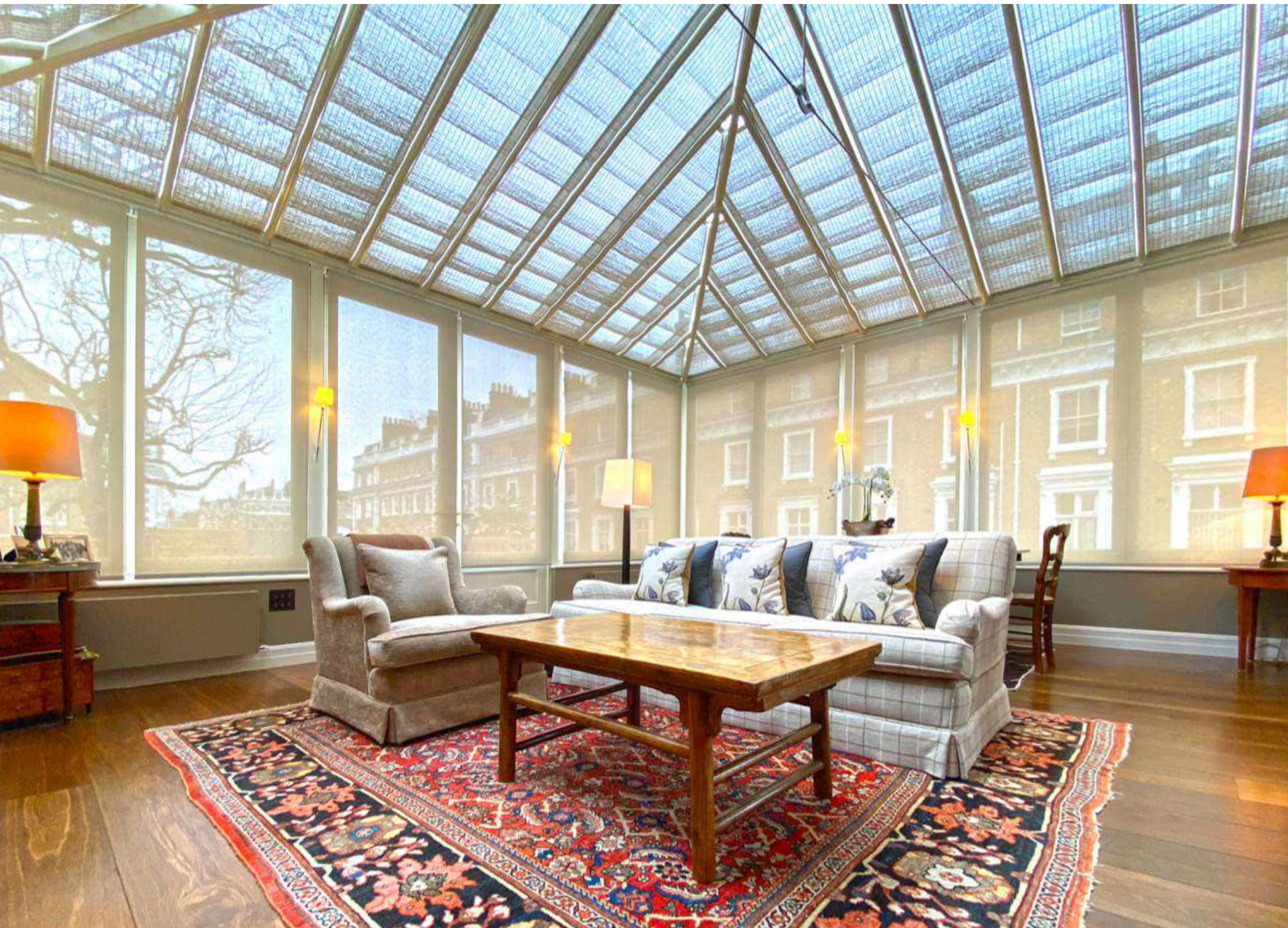
French Pinoleum blind can be supplied finished to any custom paint colour enabling bespoke solutions to blend or contrast with the garden room building structure.



### Product Specification

**Roof** - Motorised French Pinoleum blinds made using original Flatweave material finished in Grants Old Hardwick material.





## Roof-Top Garden Room

Products can be mixed with great effect. Here French Pinoleum Roof Blinds have been combined with surface-mounted screen roller blinds in Glenheim screen material.



### Product Specification

**Roof Blinds** - Motorised French Pinoleum blinds made using Flatweave Farmhouse Door colour.

**Window Blinds** - Chain-operated manual roller blinds with Glenheim Screen 10% material.





**Product Specification**

Blinds – Manual French Pinoleum blind made using Flatweave Huddon Hall coloured material.





## Modern And Traditional

This Vale Garden House Building needed a modern contemporary solution.

Grants frequently have clients who want to break away from the traditional, to something simple but functional. Shown here are Honeycell Duette® cellular blinds in a Cranbourne non-blackout Feather White colour.



### Product Specification

Roof blinds - Honeycell Duette Cranbourne material blinds fully motorised.





## Thank You

Thank you for taking the time to peruse this wide range of varying design ideas and the work we carry out.

We hope you have found this helpful and very much look forward to discussing your project with us.

Thank you!



## Product Specification

**Roof** - French Pinoleum Blinds made using Flatweave Chatsworth colour material fitting between the glazing bars with Solar Reflective Lining.

**Windows** - matching motorised window blinds.





---

*“Adding WOW to any project,  
through inspiration, expertise  
and bespoke solutions”*

---

0800 652 2190

[sales@grantsblinds.com](mailto:sales@grantsblinds.com)

[grantsblinds.com](http://grantsblinds.com)

BY APOINTMENTS ONLY:

Amersham Showroom - Sky House, Raans Road, Amersham, Bucks, HP6 6JQ

Head Office & Workrooms - Leigh House, Single Street, Berrys Green, Biggin Hill, Kent TN16 3AB



Visit [grantsblinds.com](http://grantsblinds.com) to download our popular Guides



Guide to  
Blinds Concealment



Guide to  
Garden Room Shading



Guide to  
Blackout Blinds