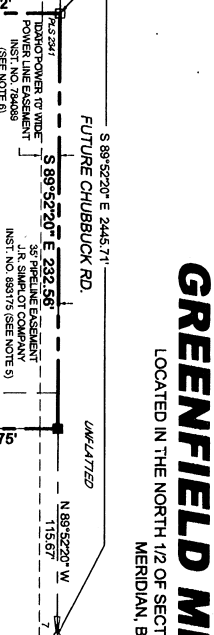
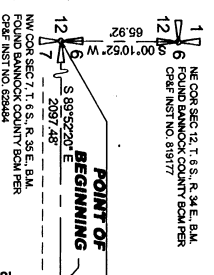


# GREENFIELD MEADOWS DIVISION 1

LOCATED IN THE NORTH 1/2 OF SECTION 7, TOWNSHIP 6 SOUTH, RANGE 35 EAST, BOISE MERIDIAN, BANNOCK COUNTY, IDAHO.

NORTH 1/4 CORNER SEC 7, T. 6 S., R. 35 E., B.M. FOUND BY GREENFIELD MEADOWS HOMEOWNERS ASSOCIATION (SEE NOTE 5) STAMPED PLS 28/1873 CONF. NO. 8411373



TEMPORARY EASEMENT FOR VEHICLE TURNAROUND AND MAINTENANCE OF PUBLIC UTILITIES. THE EASEMENT WILL TERMINATE AFTER THE NEXT SUBDIVISION OF SAID LOT. IMPROVEMENTS AND RECORDS IN THE CITY OF BANNOCK COUNTY UNDER INSTRUMENT NO. 2341.

TEMPORARY EASEMENT FOR VEHICLE TURNAROUND AND MAINTENANCE OF PUBLIC UTILITIES. THE EASEMENT WILL TERMINATE AFTER THE NEXT SUBDIVISION OF SAID LOT. IMPROVEMENTS AND RECORDS IN THE CITY OF BANNOCK COUNTY UNDER INSTRUMENT NO. 2341.

**CURVE TABLE**

NUMBER	DELTA ANGLE	CHORD DIRECTION	TANGENT	RADIUS	ARC LENGTH	CHORD LENGTH
C1	4°28'08"	S 2°05'58" E	38.02'	1000.00'	78.00'	77.98'
C2	2°16'56"	S 1°00'23" E	20.52'	1030.00'	41.03'	41.03'
C3	2°11'12"	S 3°14'27" E	19.66'	1030.00'	39.31'	39.31'
C4	2°58'22"	N 1°21'05" W	25.17'	970.00'	50.33'	50.32'
C5	1°29'46"	N 3°35'89" W	12.67'	970.00'	25.33'	25.33'

**LINE TABLE**

NUMBER	DIRECTION	DISTANCE
L1	N 45°04'13" E	28.25'
L2	S 44°55'57" E	28.32'
L3	S 89°59'39" E	24.29'

**LEGEND**

- FOUND SECTION CORNER AS NOTED
- FOUND 1/4 CORNER AS NOTED
- FOUND 5/8 INCH REBAR WITH 2 INCH ALUM. CAP STAMPED AS NOTED
- FOUND 1/2 INCH REBAR WITH PLASTIC CAP STAMPED PLS 2341
- SET 5/8 INCH BY 30 INCH REBAR WITH 2 INCH ALUM. CAP STAMPED (RMS PLS 2341) IN MONUMENT VALT
- SET 5/8 INCH BY 30 INCH REBAR WITH 2 INCH ALUM. CAP STAMPED (RMS PLS 2341)
- SET 1/2 INCH BY 24 INCH REBAR WITH PLASTIC CAP STAMPED AS NOTED (SEE NOTE 5)
- SUBDIVISION BOUNDARY LINE
- SUBDIVISION LOT LINES
- STREET CENTERLINE
- SECTION LINE
- EXISTING LOT LINES
- EASEMENT SIDELINE
- EXISTING EASEMENT SIDELINE AS NOTED



**REVISIONS**

NO.	DATE	DESCRIPTION
1	NOV 2012	PRELIMINARY
2	NOV 2012	FINAL

PROJECT NO. 12005  
DATE: NOV 2012  
SCALE: 1"=50'

RECORDED INSTRUMENT NO. 2341

GREENFIELD MEADOWS DIVISION NO. 1

LOCATED IN N 1/2 OF SECTION 7, T. 6 S., R. 35 E., B.M. BANNOCK COUNTY, IDAHO

**BASIS OF BEARING**  
PER CITY DATUM BASED ON THE CENTRAL MERIDIAN OF EAST ZONE OF IDAHO STATE PLANE COORDINATE SYSTEM.

RECORDING INSTRUMENT NO. 2341

**NOTES:**

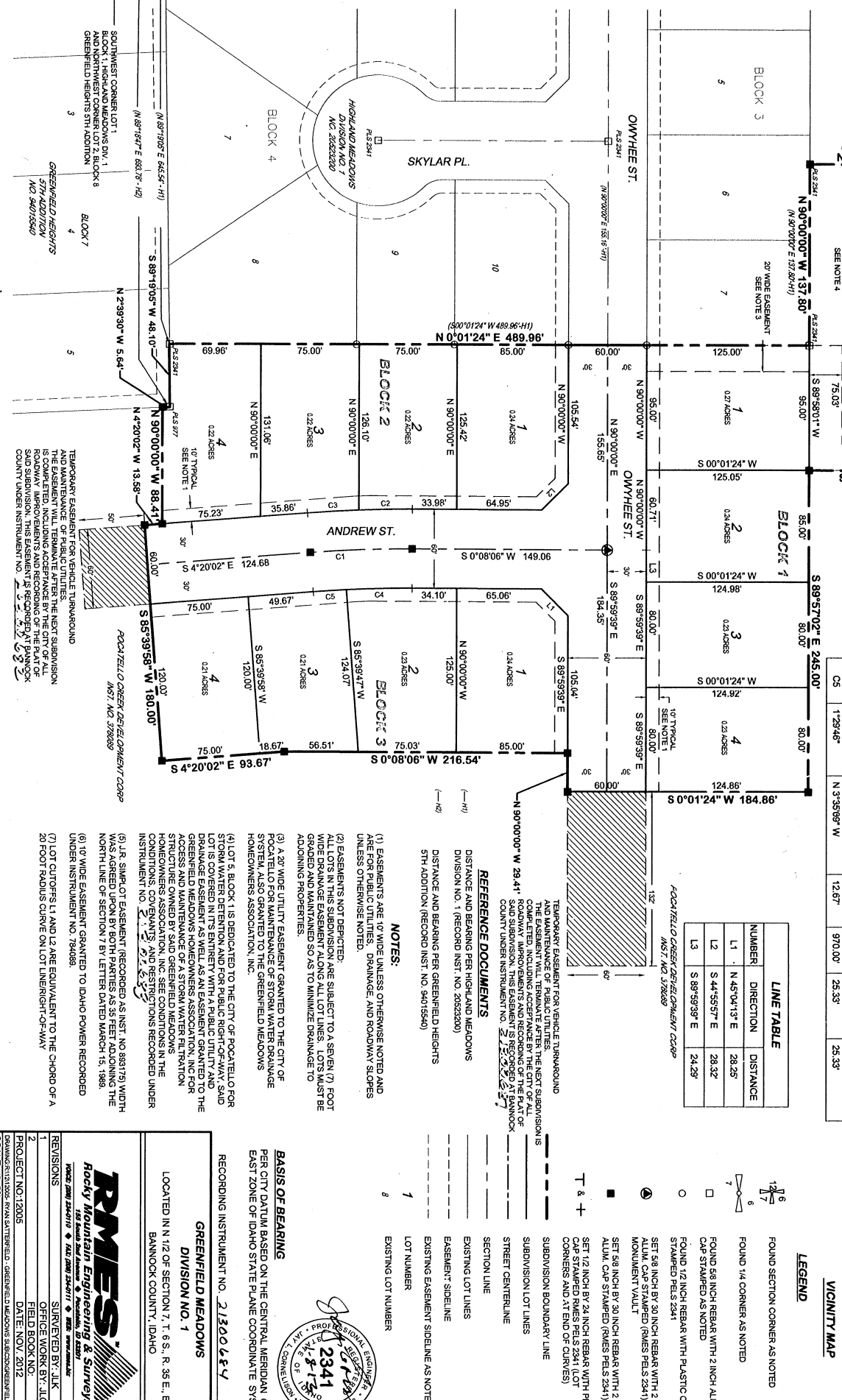
- EASEMENTS ARE 10' WIDE UNLESS OTHERWISE NOTED AND ARE FOR PUBLIC UTILITIES, DRAINAGE, AND ROADWAY SLOPES UNLESS OTHERWISE NOTED.
- EASEMENTS NOT DEPICTED.
- ALL LOTS IN THIS SUBDIVISION ARE SUBJECT TO A SEVEN (7) FOOT WIDE DRAINAGE EASEMENT ALONG ALL LOT LINES. LOTS MUST BE GRADED AND MAINTAINED SO AS TO MINIMIZE DRAINAGE TO ADJOINING PROPERTIES.
- A 20' WIDE UTILITY EASEMENT GRANTED TO THE CITY OF BANNOCK COUNTY FOR MAINTENANCE OF STREET LIGHTING AND DRAINAGE SYSTEM ALSO GRANTED TO THE GREENFIELD MEADOWS HOMEOWNERS ASSOCIATION, INC.
- LOT 5, BLOCK 1 IS DEDICATED TO THE CITY OF POCAHELLO FOR STORM WATER DETENTION AND FOR PUBLIC RIGHT-OF-WAY. SAID DRAINAGE EASEMENT AS WELL AS AN EASEMENT GRANTED TO THE GREENFIELD MEADOWS HOMEOWNERS ASSOCIATION, INC. FOR ACCESS AND MAINTENANCE OF A STORM WATER FILTRATION STRUCTURE OWNED BY SAID GREENFIELD MEADOWS HOMEOWNERS ASSOCIATION, INC. (SEE CONDITIONS IN THE INSTRUMENT NO. 2341) RECORDATIONS RECORDED UNDER INSTRUMENT NO. 2341.
- JR. SIMPLOT EASEMENT RECORDED AS INST. NO. 883179 WIDTH WAS AGREED UPON BY BOTH PARTIES BY LETTER DATED MARCH 15, 1989.
- 10' WIDE EASEMENT GRANTED TO IDAHO POWER RECORDED UNDER INSTRUMENT NO. 784989.
- LOT CUTOFFS L1 AND L2 ARE EQUIVALENT TO THE CHORD OF A 20 FOOT RADIUS CURVE ON LOT LINE RIGHT-OF-WAY.

**REFERENCE DOCUMENTS**

DISTANCE AND BEARING PER HIGHLAND MEADOWS DIVISION NO. 1 (RECORDED INST. NO. 2052300)

DISTANCE AND BEARING PER GREENFIELD HEIGHTS 5TH ADDITION (RECORDED INST. NO. 94015540)

**TEMPORARY EASEMENT FOR VEHICLE TURNAROUND AND MAINTENANCE OF PUBLIC UTILITIES.** THE EASEMENT WILL TERMINATE AFTER THE NEXT SUBDIVISION OF SAID LOT. IMPROVEMENTS AND RECORDS IN THE CITY OF BANNOCK COUNTY UNDER INSTRUMENT NO. 2341.



**REVISIONS**

NO.	DATE	DESCRIPTION
1	NOV 2012	PRELIMINARY
2	NOV 2012	FINAL

PROJECT NO. 12005  
DATE: NOV 2012  
SCALE: 1"=50'

RECORDED INSTRUMENT NO. 2341

GREENFIELD MEADOWS DIVISION NO. 1

LOCATED IN N 1/2 OF SECTION 7, T. 6 S., R. 35 E., B.M. BANNOCK COUNTY, IDAHO

**BASIS OF BEARING**  
PER CITY DATUM BASED ON THE CENTRAL MERIDIAN OF EAST ZONE OF IDAHO STATE PLANE COORDINATE SYSTEM.

RECORDING INSTRUMENT NO. 2341

**NOTES:**

- EASEMENTS ARE 10' WIDE UNLESS OTHERWISE NOTED AND ARE FOR PUBLIC UTILITIES, DRAINAGE, AND ROADWAY SLOPES UNLESS OTHERWISE NOTED.
- EASEMENTS NOT DEPICTED.
- ALL LOTS IN THIS SUBDIVISION ARE SUBJECT TO A SEVEN (7) FOOT WIDE DRAINAGE EASEMENT ALONG ALL LOT LINES. LOTS MUST BE GRADED AND MAINTAINED SO AS TO MINIMIZE DRAINAGE TO ADJOINING PROPERTIES.
- A 20' WIDE UTILITY EASEMENT GRANTED TO THE CITY OF BANNOCK COUNTY FOR MAINTENANCE OF STREET LIGHTING AND DRAINAGE SYSTEM ALSO GRANTED TO THE GREENFIELD MEADOWS HOMEOWNERS ASSOCIATION, INC.
- LOT 5, BLOCK 1 IS DEDICATED TO THE CITY OF POCAHELLO FOR STORM WATER DETENTION AND FOR PUBLIC RIGHT-OF-WAY. SAID DRAINAGE EASEMENT AS WELL AS AN EASEMENT GRANTED TO THE GREENFIELD MEADOWS HOMEOWNERS ASSOCIATION, INC. FOR ACCESS AND MAINTENANCE OF A STORM WATER FILTRATION STRUCTURE OWNED BY SAID GREENFIELD MEADOWS HOMEOWNERS ASSOCIATION, INC. (SEE CONDITIONS IN THE INSTRUMENT NO. 2341) RECORDATIONS RECORDED UNDER INSTRUMENT NO. 2341.
- JR. SIMPLOT EASEMENT RECORDED AS INST. NO. 883179 WIDTH WAS AGREED UPON BY BOTH PARTIES BY LETTER DATED MARCH 15, 1989.
- 10' WIDE EASEMENT GRANTED TO IDAHO POWER RECORDED UNDER INSTRUMENT NO. 784989.
- LOT CUTOFFS L1 AND L2 ARE EQUIVALENT TO THE CHORD OF A 20 FOOT RADIUS CURVE ON LOT LINE RIGHT-OF-WAY.

**REFERENCE DOCUMENTS**

DISTANCE AND BEARING PER HIGHLAND MEADOWS DIVISION NO. 1 (RECORDED INST. NO. 2052300)

DISTANCE AND BEARING PER GREENFIELD HEIGHTS 5TH ADDITION (RECORDED INST. NO. 94015540)

**TEMPORARY EASEMENT FOR VEHICLE TURNAROUND AND MAINTENANCE OF PUBLIC UTILITIES.** THE EASEMENT WILL TERMINATE AFTER THE NEXT SUBDIVISION OF SAID LOT. IMPROVEMENTS AND RECORDS IN THE CITY OF BANNOCK COUNTY UNDER INSTRUMENT NO. 2341.

**Rocky Mountain Engineering & Surveying**  
180 South 24th Street, Suite 100, Boise, ID 83721  
Phone: 208.333.1111 Fax: 208.333.1112  
www.rm-es.com

SURVEYED BY: J.L.K.  
OFFICE WORK BY: J.C. WAG  
FIELD BOOK NO.:  
DATE: NOV 2012  
SHEET 1 OF 2