

NATUZZI
ITALIA

Materials collection



Index

1

Leather 3

2

Cuoio 29

3

Fabric 33

4

Marble
& Stone 79

5

Performances
& Innovative
Materials 91

6

Wood 99

7

Laquered

105

8

Glass &
Mirror

111

9

Metal

121

10

General Care
& Maintenance

127

Living matter



Everything has a soul. The real talent lies in being able to recognize it. Passion is the way to bring it to light.

It is legend that the great Michelangelo contemplating one of his statues exclaimed, "Why don't you speak?" striking it with a hammer. Without wanting to compare ourselves with the great Italian genius, much more humbly we have always believed that natural matter really has a soul and that it is our task to give it the right shape so that it can express all its beauty. And we have always dedicated ourselves to this mission with love, dedication and reverence.

We looked to those who paved our path. We followed in the footsteps of our fathers, grandfathers and great-grandfathers who took the same passionate approach in shaping our beautiful surroundings: our birthplace and our homeland, our local area and our country.

We learned that the search for perfect harmony is the secret. The Natuzzi Style Center tirelessly studies and defines new criteria. Wisely combining materials in an infinite variety of shapes and colors, in which beauty is highlighted: leather and fabrics are carefully contrasted with raw wood and glossy lacquered surfaces, superlative marbles counteract with hardened steel, and the warmth of natural wood is highlighted by glass and metal with polished or satin surfaces.

The search for perfect harmony is the secret. The Natuzzi Style Center tirelessly studies and defines new criteria. Wisely combining materials in an infinite variety of shapes and colors, in which beauty is highlighted: leather and fabrics are carefully contrasted with raw wood and glossy lacquered surfaces, superlative marbles contrast with hardened steel, and the warmth of natural wood is highlighted by glass and metal with shiny or satiny surfaces.

This unique heritage translates into a wide range of immensely valuable objects to explore with our interior designers in the home of harmony, the Natuzzi Italia stores.

1

Leather

Natuzzi and leather, a combination that has marked the success of the Natuzzi collections from the very beginning. Imitated since time immemorial and never equalled, Natuzzi leather is the benchmark of its category, a supremacy recognised worldwide. Its beauty, softness, colour and even its scent have defined a new standard of elegance and multi-sensory pleasure. If the material is alive, the leather breathes, even. And it does not care to hide its natural marks, rather it makes a boast of them, proudly displaying them as proof of its authenticity.

A leather that is as beautiful as it is safe because it is processed in compliance with European environmental standards, among the strictest in the world. This is why it can guarantee total non-toxicity and resistance over time.

Natural

Leathers on which a light and transparent film has been applied which makes them breathable, soft and therefore more suitable for customers looking for an intense sensory experience.



*65 years of experience
in tanning*



*Leather's blemishes are
proof of its natural beauty*

Protecta

Leathers on which a denser and more concealing film has been applied which makes them more resistant and, therefore, more suitable for active use of the product.



*Protective layer
for increased durability*



*Compliance with
environmental standards*



In-depth pages on the material



Le mans (Protecta)

This leather has natural grain with light buffed process and a very light translucent finish for color. Being a natural grain article, differences in grain are acceptable. The thickness is from 1.1 – 1.3 mm. Its main characteristics are the extremely soft hand and the touch slightly fat, but appreciable. Other natural characteristics such as scars, vein, insect bites, etc. are also visible on this article.

Technical features

- Origin: Extra European
- Thickness: 1.1- 1.3 mm
- Hand: soft
- Appearance: semi matte
- Breathability: average
- Color resistance to wear and tear: good
- Colorfastness to light: good
- Natural marks: frequent
- Finishing: protective coating

Care instructions

- Periodically dust using a clean, dry and non-abrasive white cloth.
- For stains caused by soft drinks, coffee, tea, milk, chocolate, oil, fat, cosmetics, foundation cream: remove the stain rapidly from the surface, by dabbing with absorbent cloth or paper. Then, delicately rub working from the outside towards the centre of the stain using a cloth soaked in a water and mild white soap solution. Do not soak the leather surface and dry the surface immediately using a clean cloth.
- Do not dry the leather in direct sunlight or with a hair dryer.



Status (Protecta)

This leather is lightly finished for color. It is a full shrunken grain that is also lightly protected. The thickness is from 1.3-1.5 mm. Even though this article is “protecta” the grain is natural because it is not embossed nor buffed, therefore the grain remains full. The principal characteristics are the soft feel and the thickness and different grain. You achieve a shrunken grain by not stretching the leather during the drying process thus raising the grain.

Technical features

- Origins: European Cattle
- Thickness: 1.3 – 1.5 mm
- Hand: soft
- Appearance: semi-glossy
- Breathability: average
- Color resistance to wear and tear: fair
- Color resistant to light: fair
- Natural markings: frequent
- Finishing: semi-aniline

Care instructions

- Periodically dust using a clean, dry and non-abrasive white cloth.
- For stains caused by soft drinks, coffee, tea, milk, chocolate, oil, fat, cosmetics, foundation cream: remove the stain rapidly from the surface, by dabbing with absorbent cloth or paper. Then, delicately rub working from the outside towards the centre of the stain using a cloth soaked in a water and mild white soap solution. Do not soak the leather surface and dry the surface immediately using a clean cloth.
- Do not dry the leather in direct sunlight or with a hair dryer.



Stromboli (Protecta)

Stromboli leather has a contemporary look and the grain is natural and small. The thickness is from 1.0-1.2 mm. The principal characteristics of this leather is the extremely soft and velvet touch. Even if it slightly buffed, Stromboli is a leather that keeps all the natural characteristic of the leather such as scars, veins, wrinkles, and difference in grain. Some difference in tone are acceptable, because the Stromboli has a light finishing.

Technical features

- Origins: European Cattle
- Thickness: 1.0 – 1.2 mm
- Hand: soft
- Appearance: semi-glossy
- Breathability: fair
- Color resistance to wear and tear: fair
- Color resistant to light: fair
- Natural markings: frequent
- Finishing: semi-aniline
-

Care instructions

- Periodically dust using a clean, dry and non-abrasive white cloth.
- For stains caused by soft drinks, coffee, tea, milk, chocolate, oil, fat, cosmetics, foundation cream: remove the stain rapidly from the surface, by dabbing with absorbent cloth or paper. Then, delicately rub working from the outside towards the centre of the stain using a cloth soaked in a water and mild white soap solution. Do not soak the leather surface and dry the surface immediately using a clean cloth.
- Do not dry the leather in direct sunlight or with a hair dryer.



Misterbianco (Protecta)

Misterbianco is a leather lightly finished for color, with the thickness from 1.8 to 2.0 mm. Its principal characteristic - in addition to the thickness - is the very large, irregular grain which particularly gives full-bodied feel and a great look to the article. The scars or wrinkles are considered absolutely normal for this article hence they may be visible on different parts of the product.

Technical features

- Origin: European cattle
- Thickness: 1.8- 2 mm
- Hand: full of body
- Appearance: semi matte
- Breathability: average
- Color resistance to wear and tear: fair
- Colorfastness to light: fair
- Natural marks: frequent
- Finishing: light protective coating

Care instructions

- Periodically dust using a clean, dry and non-abrasive white cloth.
- For stains caused by soft drinks, coffee, tea, milk, chocolate, oil, fat, cosmetics, foundation cream: remove the stain rapidly from the surface, by dabbing with absorbent cloth or paper. Then, delicately rub working from the outside towards the centre of the stain using a cloth soaked in a water and mild white soap solution. Do not soak the leather surface and dry the surface immediately using a clean cloth.
- Do not dry the leather in direct sunlight or with a hair dryer.



Siena (Natural)

This leather is pure aniline. As a pure aniline, the grain is also natural and full/pure. The thickness is from 1,3 - 1,5 mm. The principal characteristic of this article other than its soft and full hand, is the waxy and semi-glossy look. This leather has a very compact fibre structure and smooth look because it was vacuum dried during the tanning process.

Technical features

- Origins: North European Cattle
- Thickness: 1,3 - 1,5 mm
- Hand: slightly oily
- Appearance: semi-glossy
- Breathability: good
- Color resistance to wear and tear: low
- Color resistant to light: low
- Natural markings: frequent
- Finishing: pure aniline

Care instructions

- Periodically dust using a clean, dry and non-abrasive white cloth.
- For dry dirt: brush delicately using a brush with soft bristles or use a vacuum cleaner at the medium suction power setting.
- For stains caused by substances soluble in water (soft drinks, coffee, tea, milk, jam): rapidly remove the liquid from the surface using a white, non-abrasive cloth (or absorbent paper).
- For stains caused by greasy substances (oil, ketchup, mayonnaise, chocolate): remove the substance delicately from the surface using absorbent paper, taking care not exert pressure. Use a clean cloth, soaked in a very dilute solution of neutral soap, rubbing delicately.
- Dry immediately with a clean cloth. Only use water and colourless mild soap.



Cassidy (Natural)

Cassidy is a natural grain pure aniline leather. Its thickness range is approximately 3 mm and due to its thickness can only be used on certain models. The article has a velvety touch and a matte-nabuk appearance. Due to its being very natural you can easily spot very large and marked grain and low grain and differences in tonalities depending on the part of the hide

Technical features

- Origins: North European Cattle
- Thickness: > 3 mm
- Hand: soft and velvety
- Appearance: matte-nabuk
- Breathability: good
- Color resistance to wear and tear: low
- Color resistant to light: low
- Natural markings: very frequent
- Finishing: pure aniline

Care instructions

- Periodically dust using a clean, dry and non-abrasive white cloth.
- For dry dirt: brush delicately using a brush with soft bristles or use a vacuum cleaner at the medium suction power setting.
- For stains caused by substances soluble in water (soft drinks, coffee, tea, milk, jam): rapidly remove the liquid from the surface using a white, non-abrasive cloth (or absorbent paper). Then rub delicately. Dry immediately with a clean cloth. Do not dry the leather in direct sunlight or with a hair dryer.
- For stains caused by greasy substances (oil, ketchup, mayonnaise, chocolate): remove the substance delicately from the surface using absorbent paper,
- Dry immediately with a clean cloth. Only use water and colourless mild soap.



Sahara (Natural)

This article is a nubuk using a natural, top grain meaning that during the finishing process the leather has been buffed to give a velvet-like nap. The thickness is from 1.0 - 1,2 mm. The principal characteristics of this article are its soft hand and the velvety/rich look. As all natural leathers it has wrinkles, closed scars and color variations from dye lot to dye lot which is absolutely normal. For this article only European hides are used.

Technical features

- Origins: European Cattle
- Thickness: 1.0 – 1.2 mm
- Hand: soft
- Appearance: velvety
- Breathability: good
- Color resistance to wear and tear: low
- Color resistant to light: low
- Natural markings: frequent

Care instructions

- The Natural Nabuk leather products also belong to the family of Natural products, they therefore have all the natural characteristics described previously. The “nabuk effect” is the result of a very light polishing, adopted to give the leather a velvet effect referred to as nabuk.
- These leather products can be cleaned using the same procedures described for the Natural leather products (see to the side).
- Rub very delicately using thin abrasive paper after the leather has been cleaned and dried, to restore the Nabuk effect

Leather / Protecta - Le mans



1575

Seashell

If model includes contrast stitching option,
the colour of thread is: White as shown



1576

Black

If model includes contrast stitching option,
the colour of thread is: Light Grey as shown



1581

Light Greige

If model includes contrast stitching option,
the colour of thread is: White as shown



1582

Light Grey

If model includes contrast stitching option,
the colour of thread is: White as shown



15C1

Cold White

If model includes contrast stitching option,
the colour of thread is: Light Grey as shown



15C3

Bronze Light Grey

If model includes contrast stitching option,
the colour of thread is: White as shown



15C4

Rosy Light Grey

If model includes contrast stitching option,
the colour of thread is: White as shown



15C1

Warm White

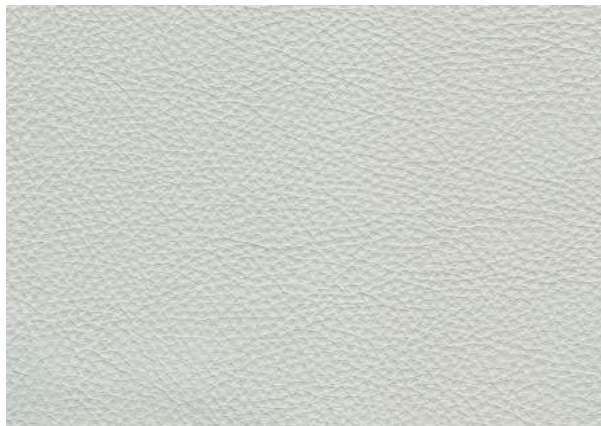
If model includes contrast stitching option,
the colour of thread is: Hemp color as shown

Leather / Protecta - Le mans



15CQ
Dark Brown

If model includes contrast stitching option,
the colour of thread is: Dark Beige as shown



15CW
Optical White



15D3
Blu Navy

If model includes contrast stitching option,
the colour of thread is: Light Grey as shown



15D6
Grey

If model includes contrast stitching option,
the colour of thread is: White as shown



15D7

Anthracite

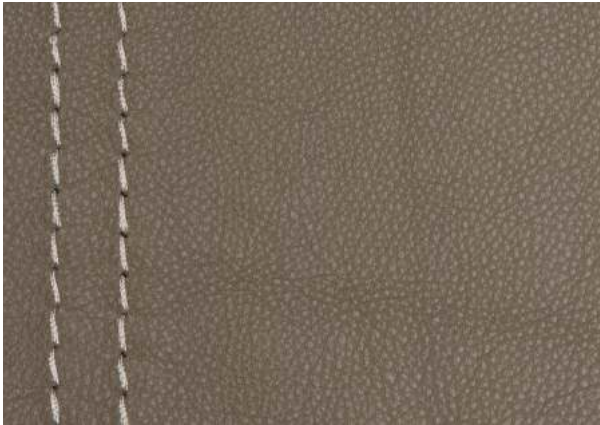
If model includes contrast stitching option,
the colour of thread is: Light Grey as shown



15D8

Orange Tea

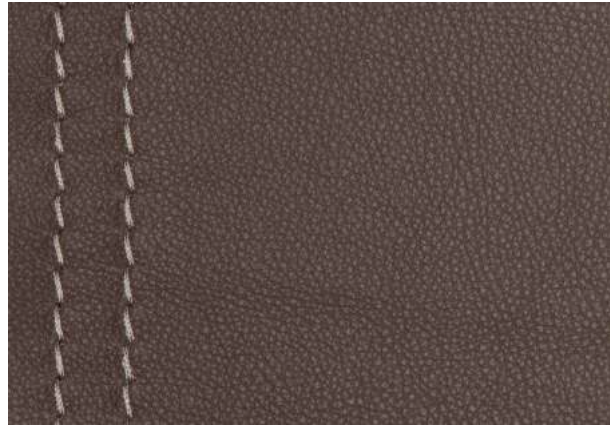
If model includes contrast stitching option,
the colour of thread is: Taupe as shown



15E5

Dark Sand

If model includes contrast stitching option,
the colour of thread is: Hemp color as shown

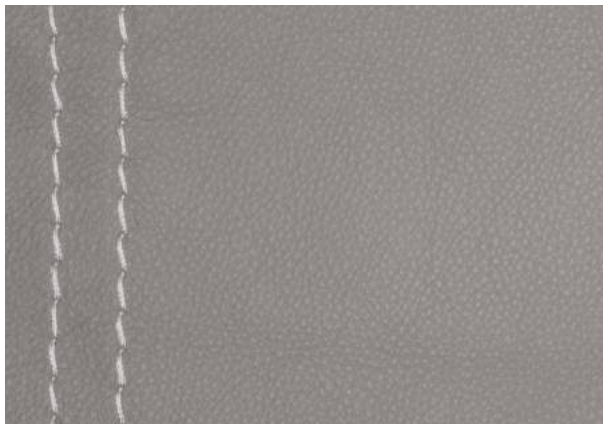


15E6

Cacao

If model includes contrast stitching option,
the colour of thread is: Taupe as shown

Leather / Protecta - Le mans



15E7

Silk Grey

If model includes contrast stitching option,
the colour of thread is: White as shown



15E8

Indico

If model includes contrast stitching option,
the colour of thread is: Light Grey as shown



15E9

Mushroom

If model includes contrast stitching option,
the colour of thread is: Taupe as shown



15FA

Beige

If model includes contrast stitching option,
the colour of thread is: White as shown



15FB

Cement

If model includes contrast stitching option,
the colour of thread is: White as shown



15F4

Champagne

If model includes contrast stitching option,
the colour of thread is: Hemp color as shown

Leather / Protecta - Status



2507

Warm Light Grey

If model includes contrast stitching option,
the colour of thread is: White as shown



2509

Cold White

Leather / Protecta - Status



2510

Cold Light Grey

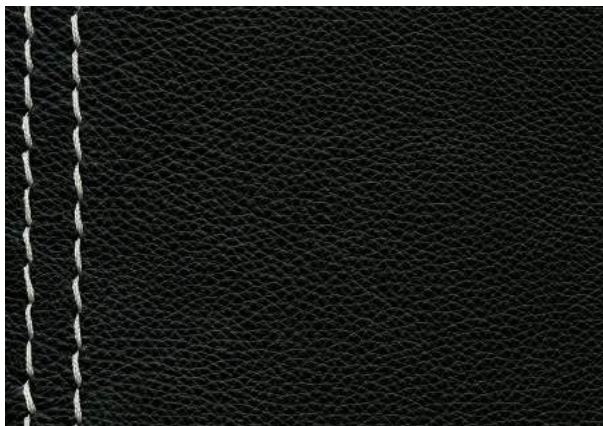
If model includes contrast stitching option,
the colour of thread is: White as shown



2516

Warm Light Grey

If model includes contrast stitching option,
the colour of thread is: White as shown



2518

Black

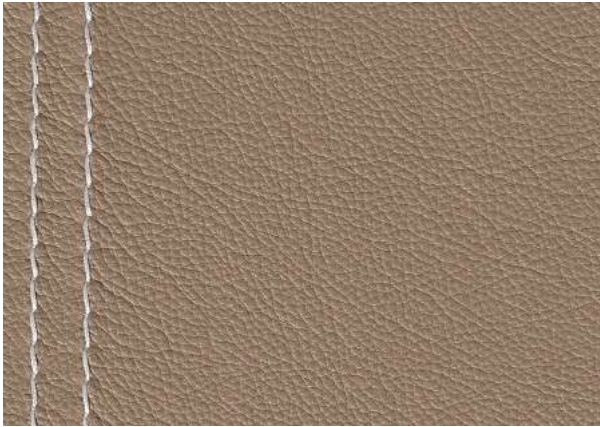
If model includes contrast stitching option,
the colour of thread is: Light Grey as shown



2526

Dove

If model includes contrast stitching option,
the colour of thread is: Hemp color as shown



2541

Dark Beige

If model includes contrast stitching option,
the colour of thread is: White as shown



2542

Bianco

If model includes contrast stitching option,
the colour of thread is: Taupe as shown



25CJ

Bark

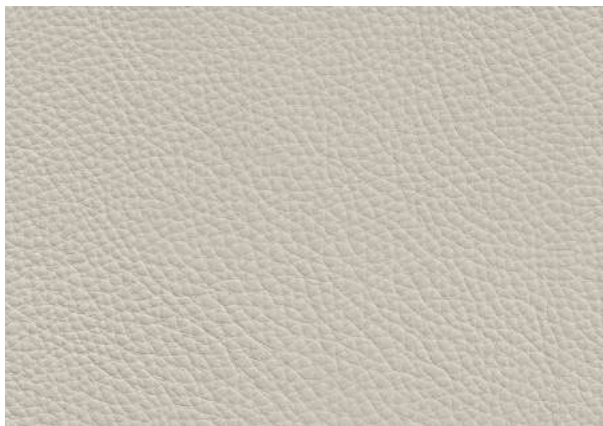
If model includes contrast stitching option,
the colour of thread is: Dark Beige as shown



25CQ

Optical white

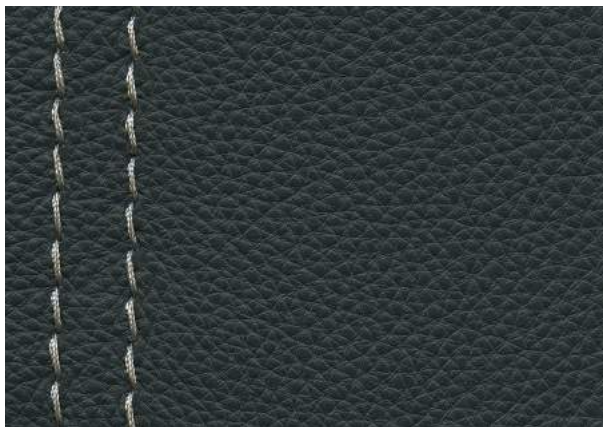
Leather / Protecta - Status



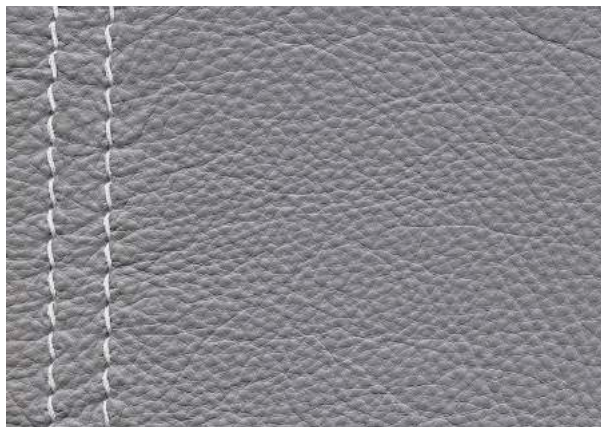
25CU
Oyster



25CY
Wine
If model includes contrast stitching option,
the colour of thread is: Taupe as shown



25CZ
Blue Teal
If model includes contrast stitching option,
the colour of thread is: Light Grey as shown



2582
Aluminium
If model includes contrast stitching option,
the colour of thread is: White as shown



2583

Tan

If model includes contrast stitching option,
the colour of thread is: Hemp color as shown

Leather / Protecta - Stromboli



30IL

Dark grey

If model includes contrast stitching option,
the colour of thread is: Light Grey as shown



30IM

Blue Jeans

If model includes contrast stitching option,
the colour of thread is: Light Grey as shown

Leather / Protecta - Stromboli



30IP

Rosy Dark Beige

If model includes contrast stitching option,
the colour of thread is: White as shown



30IQ

Warm Taupe

If model includes contrast stitching option,
the colour of thread is: Light Grey as shown



30IR

Optical white

If model includes contrast stitching option,
the colour of thread is: Light Grey as shown



30IS

Orange Tea

If model includes contrast stitching option,
the colour of thread is: Dark Beige as shown



30IT

Blue Powder

If model includes contrast stitching option,
the colour of thread is: Taupe as shown



30IU

Bordaeux

If model includes contrast stitching option,
the colour of thread is: Taupe as shown



30IV

Nude

If model includes contrast stitching option,
the colour of thread is: White as shown

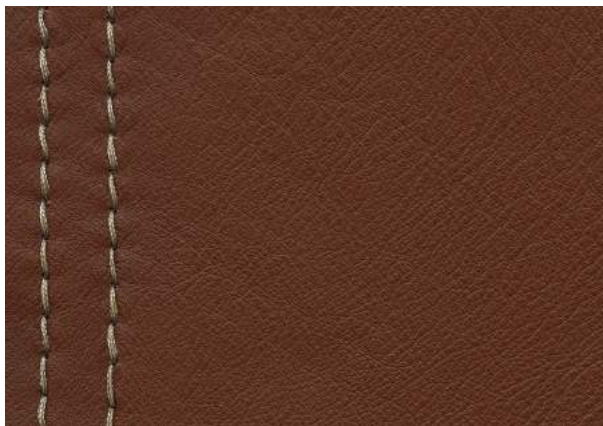


30IW

Camel

If model includes contrast stitching option,
the colour of thread is: Hemp color as shown

Leather / Protecta - Stromboli



30IX

Brick

If model includes contrast stitching option,
the colour of thread is: Taupe as shown



30IZ

Swamp Green

If model includes contrast stitching option,
the colour of thread is: Light Grey as shown



30I1

Greige

If model includes contrast stitching option,
the colour of thread is: Hemp color as shown



30I2

Grey

If model includes contrast stitching option,
the colour of thread is: White as shown

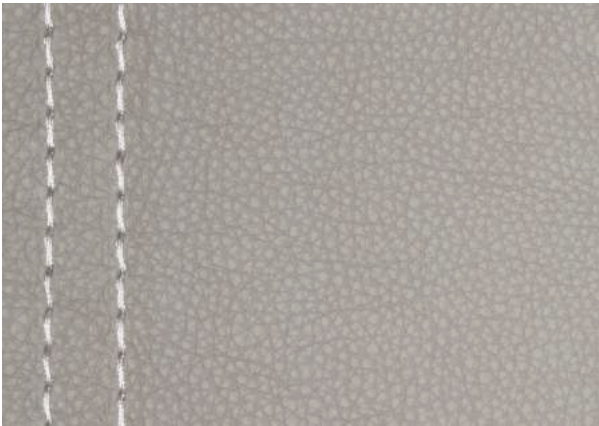


30I3

Natural Beige

If model includes contrast stitching option,
the colour of thread is: White as shown

Leather / Protecta - Misterbianco



30MA

Greige

If model includes contrast stitching option,
the colour of thread is: White as shown

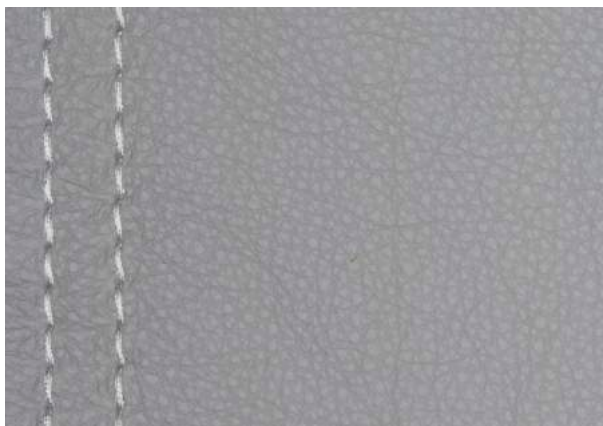


30MB

Blue

If model includes contrast stitching option,
the colour of thread is: Light Grey as shown

Leather / Protecta - Misterbianco



30MC

Pearl grey

If model includes contrast stitching option,
the colour of thread is: White as shown



30MD

Warm White

If model includes contrast stitching option,
the colour of thread is: Taupe as shown

Leather / Natural - Siena



40B3

Medium Grey

If model includes contrast stitching option,
the colour of thread is: White as shown



40B4

Blue Green

If model includes contrast stitching option,
the colour of thread is: Light Grey as shown



40B6

Yellow

If model includes contrast stitching option,
the colour of thread is: Light Grey as shown



40BM

Black

If model includes contrast stitching option,
the colour of thread is: Taupe as shown



40B7

Copper Brown

If model includes contrast stitching option,
the colour of thread is: Taupe as shown



40B8

Pearl Grey

If model includes contrast stitching option,
the colour of thread is: White as shown

Leather / Natural - Siena



40B9

Grey Soot

If model includes contrast stitching option,
the colour of thread is: Taupe as shown



40L3

Tan

If model includes contrast stitching option,
the colour of thread is: Hemp color as shown



40L4

Cappuccino

If model includes contrast stitching option,
the colour of thread is: White as shown



40L5

Chestnut

If model includes contrast stitching option,
the colour of thread is: Bruciato Chiaro as shown

Leather / Natural - Cassidy



60DA
Dark brown

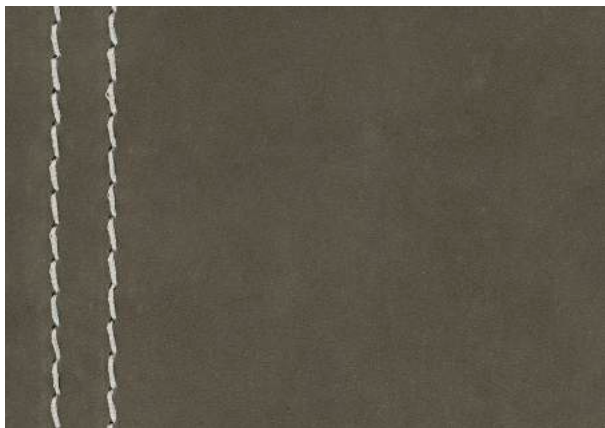


60DB
Black



60DM
Camel

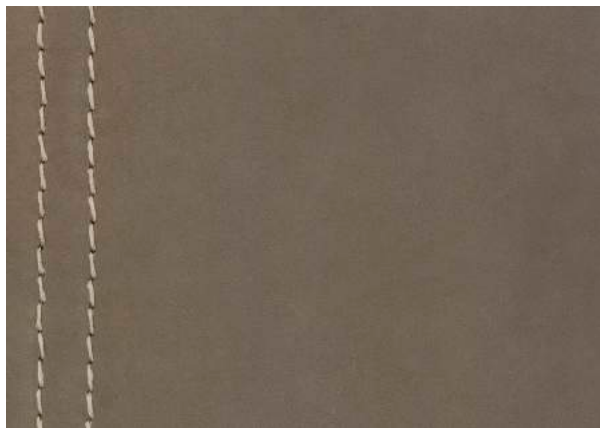
Leather / Natural - Sahara



60EA

Grey

If model includes contrast stitching option,
the colour of thread is: White thread as shown



60EB

Sepia

If model includes contrast stitching option,
the colour of thread is: Hemp color as shown



60EC

Dark Blue

If model includes contrast stitching option,
the colour of thread is: Light Grey as shown



60ED

Dark brown

If model includes contrast stitching option,
the colour of thread is: Taupe as shown



60EF

Rust

If model includes contrast stitching option,
the colour of thread is: Taupe as shown

2

Cuoio

Cuoietto

Natural grain item that has undergone a special treatment that gives it a very stiff hand hence the name “cuoietto.” The coat - of fine European origin - has received a pigmented finish that provides good stain resistance. The special tanning treatment, the portion of the coat used (only the shoulder is suitable for such use) together with the thickness (mm 1.8 - 2.00) ensure great resistance to wear and tear.

Cuoio Pieno Fiore (Vegetable leather)

Full-grain, linear-grain, barrel-dyed item. The most noticeable feature of this highly prized upholstery is its very stiff touch due to a tanning process that - is completely vegetable tanned. The touch is also emphasized by the important thickness of 2.8 - 3.00 mm while the aniline finish characterized by a delicate pull-up effect ensures great breathability and thus great comfort.



Cuoio



Tan Full Grain Leather

Chair: Frida



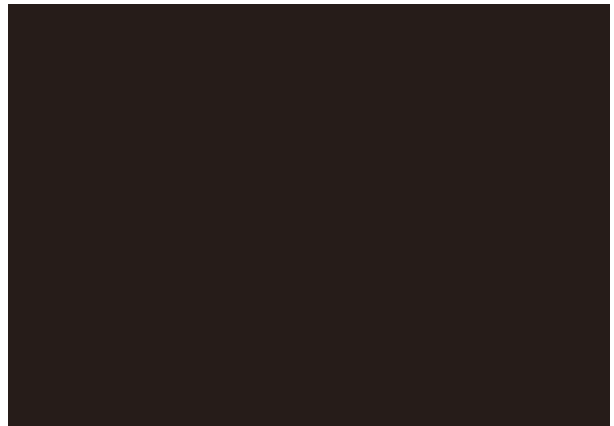
Dark Brown Full Grain Leather

Chair: Frida



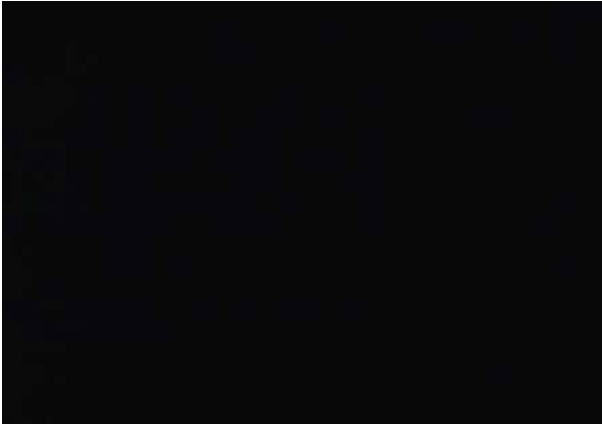
Tan

Chair: Frida



Coffee

Furnishings & Chair: Cava, Frida



Black

Chair: Frida



Taupe

Chair: Frida

3

Fabrics

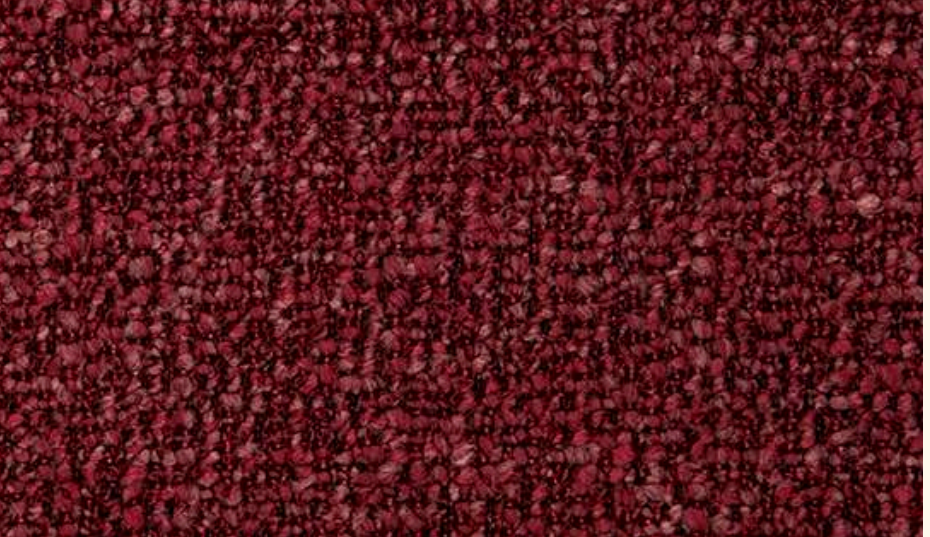
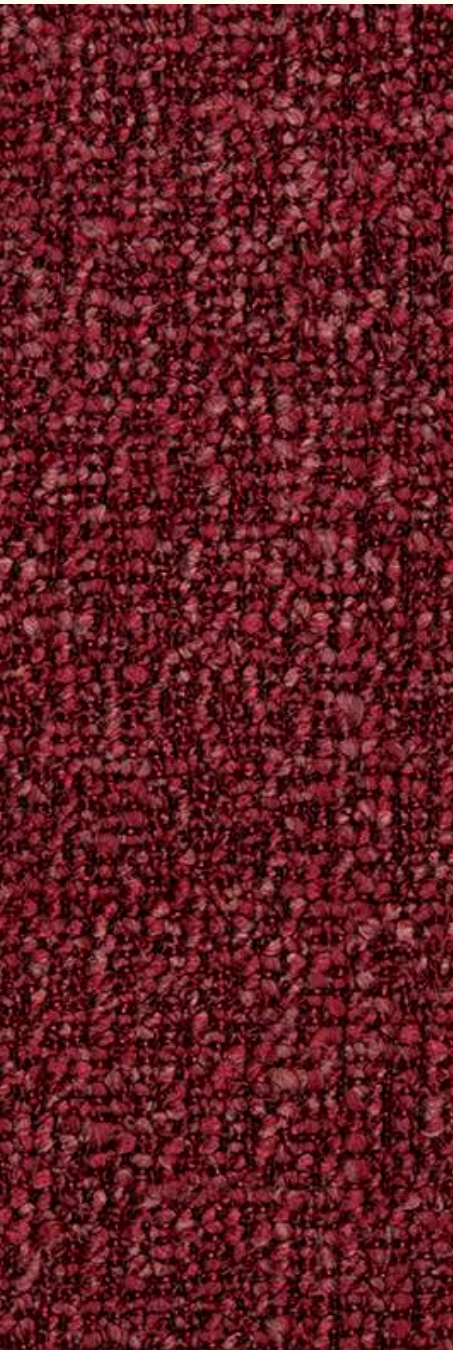
Natuzzi Italia fabrics are recognisable at first touch, for that unmistakable sensory pleasantness that makes it almost impossible to stop caressing them. The breadth of choice allows everyone to find the upholstery that best suits their home and lifestyle. Linen, wool, silk and cotton draw textures characterised by a precious naturalness. Viscosés, velvets and microfibers provide unexpected and surprising tactile pleasures, while at the same time guaranteeing great resistance to washing and wear. A world in which the quality of natural fabrics coexists with the innovation of technical fibers and performance fabrics whose exclusive technology covers each fibre with an invisible layer, which prevents dirt from penetrating the fabric and allows stains to be easily removed. Ecological and safe fabrics, certified OEKO-TEX® Standard 100, an international certificate that guarantees the total sustainability of fibers and textiles. Fabrics designed for enjoying life – and the sofa – all together, without worries.

Performance Fabrics

Thanks to an exclusive technology, each fiber is covered with an invisible molecular layer which prevents dirt from penetrating the fabric and allows you to remove stains using just water – or at most a neutral detergent. And being a permanent treatment, it won't rub off with use or in the wash. Performance fabrics are water and stain resistant, washable with just water, they have great resistance and durability, they are protected from mites and bacterias, no need of PFCs (Perfluorocarbons) and they are pet hair resistant.

Premium Fabric

High-quality fibers produced in Italy of the best and exclusive weaves for a consumer who loves design and great quality. They require professional washing.



In-depth pages on the material



Sparano (Performance Fabric)

Article Sparano is a basic fabric in rayon and polyester with a mélange aspect. Thanks to the manufacturing technique and the harmonious alternation of uneven yarns, article Sparano has a superior perceived quality in respect to its category.

Being a water repellent article, it is very suitable for daily domestic use and has very easy maintenance.

Technical features

- Composition Surface: 60% Polyester, 40%Viscose
- Martindale abrasion: 30.000
- Pilling: 4*
- Colourfastness to light: 5
- Weight (gr/s.m.): 380

Care instructions

- Remove the stain immediately with absorbent paper towel or cloth without pressure. Use a spatula for excess residue of thick stains.
- For water-based spots, use Natuzzi Cleaner or one part neutral detergent to two parts water. Remove detergent residue with water.
- For oily stains, use one part dishwashing detergent to two parts water. Remove detergent residue with water.
- Dry Cleaning recommended for stubborn stains.



Rizzoli (Performance Fabric)

Article Rizzoli is a very soft but durable velvet in solid, modern and lively colors. This new generation polyester velvet lends itself well to all uses within the home and can be easily maintained (washable in water).

Its OEKO-TEX® certification is proof of a further guarantee of its certified quality for the wellbeing of the family.

Technical features

- Composition Surface: 100% Polyester
- Martindale abrasion: 100.000
- Pilling: 5*
- Colourfastness to light: 5
- Weight (gr/s.m.): 440

Care instructions

- Remove the stain immediately with absorbent paper towel or cloth without pressure. Use a spatula for excess residue of thick stains.
- For water-based spots, use Natuzzi Cleaner or one part neutral detergent to two parts water. Remove detergent residue with water.
- For oily stains, use one part dishwashing detergent to two parts water. Remove detergent residue with water.
- Dry Cleaning recommended for stubborn stains.



Portocervo (Performance Fabric)

Portocervo has a rich and material two-tone texture that adds value to the models, for the consumer who loves thicker and more evident textures, it enriches the final look of the model.

Technical features

- Composition: 100% Polyester
- Martindale: 74.000
- Pilling: 4-5*
- Colorfastness to light: 4
- Weight (gr/sqm): 420
- Made in China

Care instructions

- Remove the stain immediately with absorbent paper towel or cloth without pressure.
- Use a spatula for excess residue of thick stains.
- For water-based spots, use Natuzzi Cleaner or one part neutral detergent to two parts water.
- Remove detergent residue with water.
- For oily stains, use one part dishwashing detergent to two parts water.
- Remove detergent residue with water.
- Dry Cleaning recommended for stubborn stains.



Scilla (Performance Fabric)

Scilla is a soft and shiny chenille, it dresses any model very well, giving it a very elegant and refined look.

Technical features

- Composition: 100% Polyester
- Martindale: 59.000
- Pilling: 4-5*
- Colorfastness to light: 5
- Weight (gr/sqm): 345
- Made in China

Care instructions

- Remove the stain immediately with absorbent paper towel or cloth without pressure. Use a spatula for excess residue of thick stains.
- For water-based spots, use Natuzzi Cleaner or one part neutral detergent to two parts water. Remove detergent residue with water.
- For oily stains, use one part dishwashing detergent to two parts water. Remove detergent residue with water.
- Dry Cleaning recommended for stubborn stains.



Botteghe (Performance Fabric)

Botteghe is a chenille fabric with a soft and delicate hand. It is characterized by an irregular texture that gives it a natural flavor of timeless elegance.

Easy clean fabrics have an excellent resistance and easy maintenance.

Technical features

- Composition Surface: 95% Polyester, 5% Cotton
- Martindale abrasion: 55.000
- Pilling: 4*
- Colourfastness to light: 4
- Weight (gr/s.m.): 650

Care instructions

- Remove the stain immediately with absorbent paper towel or cloth without pressure. Use a spatula for excess residue of thick stains.
- For water-based spots, use Natuzzi Cleaner or one part neutral detergent to two parts water. Remove detergent residue with water.
- For oily stains, use one part dishwashing detergent to two parts water. Remove detergent residue with water.
- Dry Cleaning recommended for stubborn stains.



Noto (Performance Fabric)

Very sophisticated looking textured fabric in trendy colours.

Technical features

- Composition: 58% Acrylic - 25% PES - 17% Cotton
- Martindale: 50.000
- Pilling: 4-5*
- Colorfastness to light: 4-5
- Weight (gr/sqm): 550
- Made in Turkey

Care instructions

- Remove the stain immediately with absorbent paper towel or cloth without pressure. Use a spatula for excess residue of thick stains.
- For water-based spots, use Natuzzi Cleaner or one part neutral detergent to two parts water. Remove detergent residue with water.
- For oily stains, use one part dishwashing detergent to two parts water. Remove detergent residue with water.
- Dry Cleaning recommended for stubborn stains.



Costiera (Performance Fabric)

Costiera article has a very resistant texture, called basketweave, where the warp and weft yarns are woven with a final small checkered effect, like a basket. It is an anti-mold, antibacterial, hypoallergenic, recyclable and washable fabric up to 40°, with colors very resistant to sunlight.

Oekotex certified, synonymous with respect for the environment throughout its production chain.

Technical features

- Composition: 100% Polypropylene
- Martindale: 40,000
- Pilling: 4/5*
- Colorfastness to light: 7/8
- Weight (gr/sqm): 470

Care instructions

- Remove the stain immediately with absorbent paper towel or cloth without pressure. Use a spatula for excess residue of thick stains.
- For water-based spots, use Natuzzi Cleaner or one part neutral detergent to two parts water. Remove detergent residue with water.
- For oily stains, use one part dishwashing detergent to two parts water. Remove detergent residue with water.
- Dry Cleaning recommended for stubborn stains.



Viaroma (Premium Fabric)

Fabric Viaroma is a basic yarn dyed fabric built on two beams designed to give great volume and body. Its warp of mixed high strength fibres embellished with a viscose chenille texture guarantees a pleasant touch and enhances its chromatic colour scheme.

Technical features

- Composition Surface: 40% Acrylic, 40%Viscose,
- 10%Cotton, 10% Polyester
- Martindale abrasion: 30.000
- Pilling: 3/4*
- Colourfastness to light: 5
- Weight (gr/s.m.): 700
- Made in Italy

Care instructions

- Dry Cleaning Suggested
- Dab spills quickly with a soft cloth.
- Vacuum to remove dust and dirt.



Lagrange (Premium Fabric)

Lagrange fabric has a modern structure with an uneven appearance that combines natural materials like linen and cotton with viscose and acrylic to obtain shine and a mix of tone-on-tone colours. The finishing treatment makes this fabric extremely soft and resistant to the touch and its full, heavy reinforcement can be used with any model.

Technical features

- Composition Surface: 30% Polyester, 28% Acetate, 21% Viscose, 12% Cotton, 9% Linen
- Martindale abrasion: 40.000
- Pilling: 4*
- Colourfastness to light: 4
- Weight (gr/s.m.): 614
- Made in Italy

Care instructions

- Dry Cleaning Suggested
- Dab spills quickly with a soft cloth.
- Vacuum to remove dust and dirt.



Delfino (Premium Fabric)

Fabric Delfino is constructed using a new and innovative technology that helps to obtain a puffed-up thread that is soft and compact at the same time. This fabric was designed specifically for upholstered furniture. Thanks to its sealing characteristics stitching and a reinforcement on the back, which very strong and solid; it can be used in different ambiances.

Technical features

- Composition: 30% Linen, 30% Acrylic, 20% Viscose, 10% Polyester, 5% Cotton, 5% Nylon
- Martindale abrasion: 25.000
- Pilling: 4*
- Colourfastness to light: 5
- Weight (gr/s.m.): 785

Care instructions

- Dry Cleaning Suggested
- Dab spills quickly with a soft cloth.
- Vacuum to remove dust and dirt.



Softech (Performance Fabric)

New generation microfiber with a soft touch. Thanks to the innovative finishing used on this microfiber which gives extra elasticity the fabric lends itself very well to all our modeling as it embraces all shapes. Softech also responds well to domestic needs as it is equipped with a high stain-resistant treatment, therefore suitable for daily use.

Technical features

- Composition Surface: 74% Polyester, 18% Polyurethane, 8% Elastane
- Martindale abrasion: 100.000
- Pilling: 4*
- Colourfastness to light: 4-5
- Weight (gr/s.m.): 432

Care instructions

- Dry Cleaning Suggested
- Dab spills quickly with a soft cloth.
- Vacuum to remove dust and dirt.



Farini (Premium Fabric)

Farini fabric has a modern, simple and contemporary look that is suitable for all types of environments. Especially proposed for larger dimensions, its delicate components gives depth to the fabric and its texture with a sophisticated play on colours illuminate the environment. Farini fabric has a rich full hand pleasantly soft to the touch. A perfect example of 100% Made in Italy product from conception to production.

Technical features

- Composition Surface: 35% Acrylic, 30% Cotton, 28%Viscose, 5% Polyester, 2% Linen
- Martindale abrasion: 25.000
- Pilling: 4*
- Colourfastness to light: 5
- Weight (gr/s.m.): 578
- Made in Italy

Care instructions

- Dry Cleaning Suggested
- Dab spills quickly with a soft cloth.
- Vacuum to remove dust and dirt.



Ortigia (Premium Fabric)

The Ortigia article is a blend of natural fibers that enhance its soft hand and full-bodied, elegant look. Fine linen fiber is grown and selected to be then blended with refined viscose. The special finishing to which Ortigia is subjected, done by multiple washes using the basket, is designed to make it pleasant and soft to the touch and to give it a unique look-a contemporary look reminiscent of the spirit of handcrafted fabrics. Easy to maintain and good wear resistance, this item becomes even more beautiful with daily use.

Technical features

- Composition: 42% Viscose, 33% Cotton, 13% Polyester, 12% Linen
- Martindale: 40,000
- Pilling: 4*
- Colorfastness to light: 5
- Weight (gr/sqm): 714

Care instructions

- Dry Cleaning Suggested
- Dab spills quickly with a soft cloth.
- Vacuum to remove dust and dirt.



Stresa (Premium Fabric)

The Stresa article is a refined reinvention of the classic “pie de poule” pattern, in which wool plays a key role and other fibers, including viscose, cotton, and linen, are mixed perfectly to create this contemporary-looking article.

Each color is made from two different shades in a harmonious way, resulting in a perfect blend of design and quality. The soft and delicate finishing it undergoes makes the article suitable even on wide seats.

Technical features

- Composition: 27% Cotton, 25% Acrylic, 18% Viscose, 12% Wool, 9% Linen, 9% Polyester
- Martindale: 70,000
- Pilling: 3/4*
- Colourfastness to light: 5
- Weight (gr/sqm): 547

Care instructions

- Dry Cleaning Suggested
- Dab spills quickly with a soft cloth.
- Vacuum to remove dust and dirt.



Sorrento (Premium Fabric)

Fabric made entirely from natural fibers with “bouclé effect” yarns in warp and weft creating a pleasant soft and sagging effect due to the viscose chenille. Its special finishing in “airo with softener” allows it to enhance the colors and brightness of the fibers. The patterned effect of the yarn generates a three- dimensional effect on the fabric that is very eye-catching, making it suitable even for sofas with large seats.

The special construction of the yarn and texture, makes it very resistant to wear and pilling, with values even higher than man-made fiber fabrics. Due to the viscose used FSC and the use of cotton and linen, the fabric is almost totally sustainable and recyclable.

Technical features

- Composition: 44% Viscose, 41% Cotton, 9% Linen, 6% Polyamide
- Martindale: 100,000
- Pilling: 4*
- Colourfastness to light: 4/5
- Weight (gr/sqm): 714

Care instructions

- Dry Cleaning Suggested
- Dab spills quickly with a soft cloth.
- Vacuum to remove dust and dirt.



Borgospesso (Premium Fabric)

Borgospesso is a fabric composed mainly of natural and artificial fibers, such as linen, cotton and viscose, without any synthetic components. The main feature of this product is that, even after washing, the fabric remains soft, full and shiny woven with spun yarns both in the weft and in the warp. Borgospesso is a strong and resistant orthogonal fabric, suitable especially for large seats in bright and modern environments.

Technical features

- Composition Surface: 35% Linen, 35% Viscose, 15% Cotton, 10% Polyester, 5% Nylon
- Martindale abrasion: 40.000
- Pilling: 4*
- Colourfastness to light: 5
- Weight (gr/s.m.): 785

Care instructions

- Dry Cleaning Suggested
- Dab spills quickly with a soft cloth.
- Vacuum to remove dust and dirt.



Sanbabila (Premium Fabric)

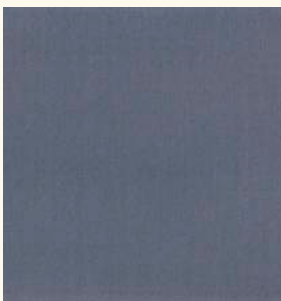
SANBABILA is a very heavy fabric with a luxurious feel. Its three-dimensional appearance is thanks to the use of a sophisticated bouclé yarn in wool blend. This characteristics stands out on the surface with a visible texture and it is very pleasant to the touch. The coexistence of different yarns such as linen, cotton, viscose and wool praise the natural composition of this fabric which, thanks to a dedicated weaving machine, has a very high performance. A complex cycle of various finishes gives it a sustained but at the same time soft and sagging hand. Fabric Sanbabila is a testimonial of traditional textile techniques applied to a contemporary product.

Technical features

- Composition Surface: 34% Viscose, 33% Acetate, 17% Wool, 8% Polyester, 4% Linen, 4% Cotton
- Martindale abrasion: 50.000
- Pilling: 4*
- Colourfastness to light: in progress
- Weight (gr/s.m.): 940
- Made in Italy

Care instructions

- Remove the stain immediately with absorbent paper towel or cloth without pressure.
- Use a spatula for excess residue of thick stains.
- For water-based spots, use Natuzzi Cleaner or one part neutral detergent to two parts water. Remove detergent residue with water.
- For oily stains, use one part dishwashing detergent to two parts water. Remove detergent residue with water.
- Dry Cleaning recommended for stubborn stains.



Laguna (Premium Fabric)

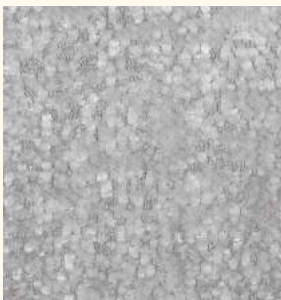
The smoothness and softness of this velvet is an outcome of careful research and a combination of natural fibres and the technique. It is dyed and finished for colour. This industrial “craftsmanship” approach results in one of the best examples of velvet for domestic use. Its compact, shiny and bright pile make it a noble and luxurious product suitable for any occasion to showcase design and have a strong visual impact. Its performance and characteristics are a guarantee of durability.

Technical features

- Composition Surface: 100% Cotton
- Martindale abrasion: 50.000
- Pilling: 4/5*
- Colourfastness to light: 4/5
- Weight (gr/s.m.): 450
- Made in Italy

Care instructions

- Dry Cleaning Suggested
- Dab spills quickly with a soft cloth.
- Vacuum to remove dust and dirt.



Galleria (Premium Fabric)

Galleria is a woven fabric created using jacquard loom and various materials such as cotton and polyester with a raised pile that enhances its texture with a captivating chenille look. Gallery is a unique fabric with a beautiful furry touch on its surface making it very soft and fuzzy. Within time, the fibers tend to loosen up and get a velvety look and feel.

Technical features

- Composition: 90% Polyester, 10% Cotton
- Made in Italy
- Martindale: 25,000
- Pilling: 4*
- Colorfastness to light: 5
- Weight (gr/sqm): 820

Care instructions

- Dry Cleaning Suggested
- Dab spills quickly with a soft cloth.
- Vacuum to remove dust and dirt.



Portavenezia (Premium Fabric)

That's a real contemporary classic: it is a bouclé fabric made with the latest generation jacquard loom and ennobled by an energetic finishing that gives it a swollen, three-dimensional hand and a soft, fluffy sound. The fabric has an intriguing and sophisticated look, a surface designed to give an exclusive materiality with the exceptional distinction of being a two-way stretch fabric that guarantees the best fit for all types of modeling.

Technical features

- Composition: 37%Viscose, 20%Wool, 20%Acrylic, 15%Polyester, 5%Linen, 3%Elastan
- Martindale: 25.000
- Pilling: 4*
- Colorfastness to light: 5
- Weight (gr/sqm): 655

Care instructions

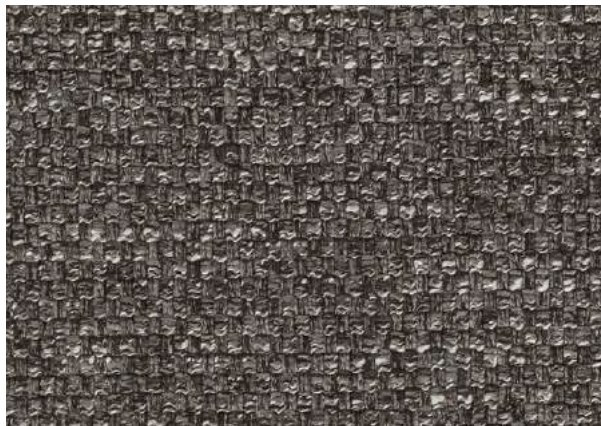
- Dry Cleaning Suggested.
- Dab spills quickly with a soft cloth.
- Vacuum to remove dust and dirt.

Fabrics / Sparano



70.0084.01

Light grey



70.0084.02

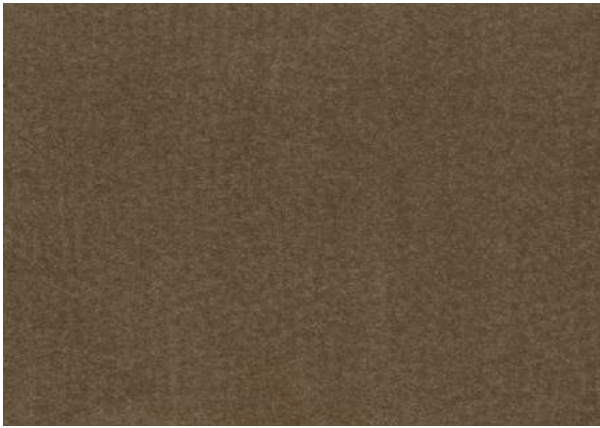
Medium grey



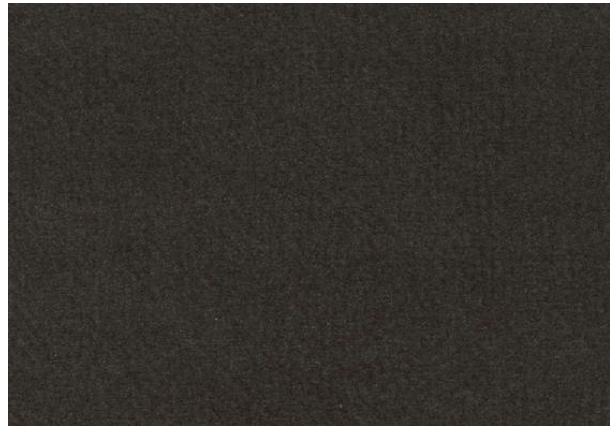
70.0084.06

Greige

Fabrics / Rizzoli



70.0085.01
Dark beige



70.0085.02
Dark Grey

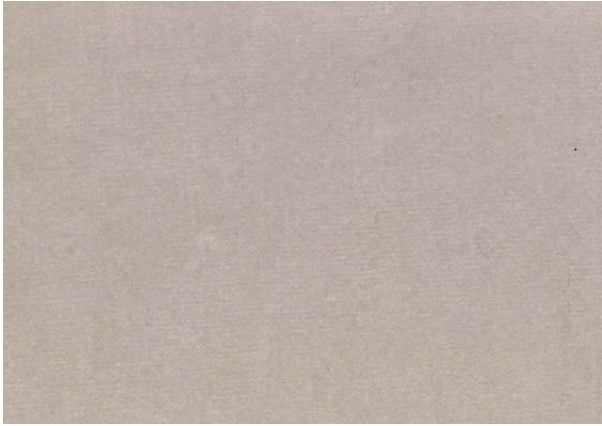


70.0085.03
Dark Blue

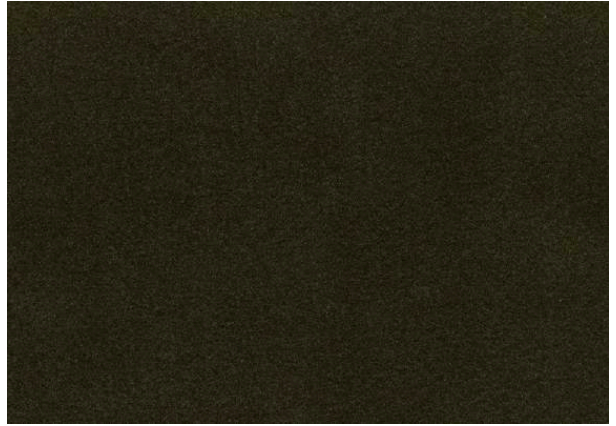


70.0085.04
Light grey

Fabrics / Rizzoli



70.0085.05
Cold white



70.0085.06
Dark green



70.0085.11
Dove



70.0085.12
Rust

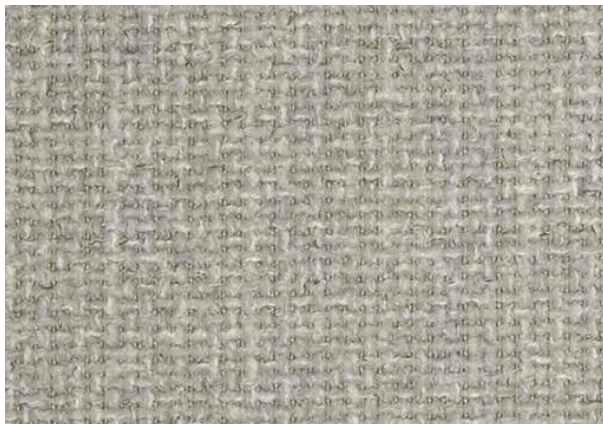


70.0085.13
Navy



70.0085.14
Mink

Fabrics / Portocervo



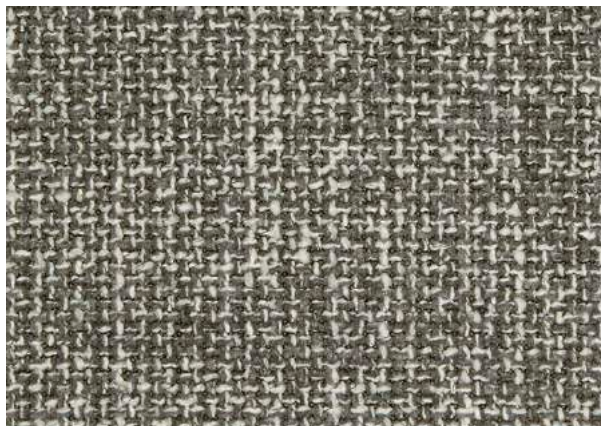
70.0096.02
Platinum grey



70.0096.03
Hazelnut



70.0096.04
Green



70.0096.05
Iron Grey

Fabrics / Scilla



70.0097.02
Beige



70.0097.03
Greige

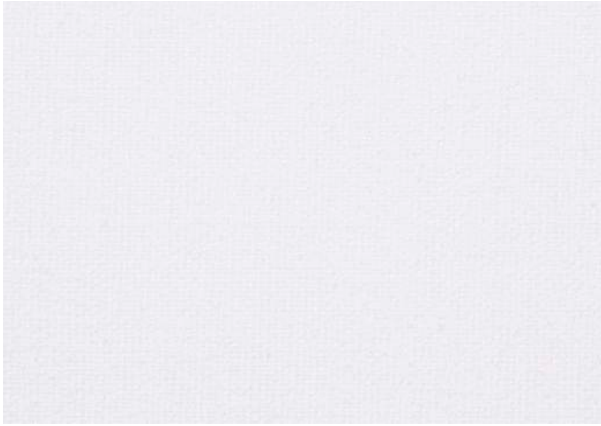


70.0097.04
Anthracite

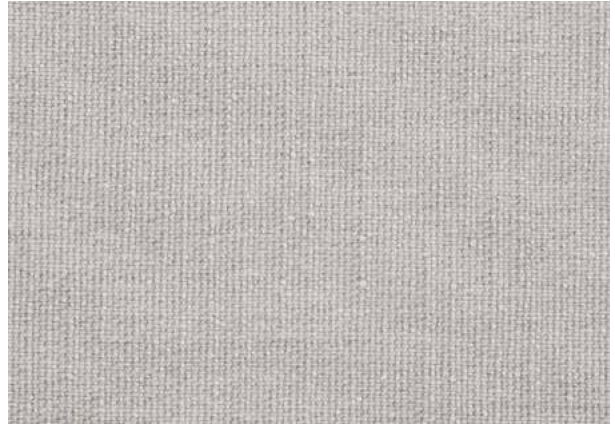


70.0097.05
Blue jeans

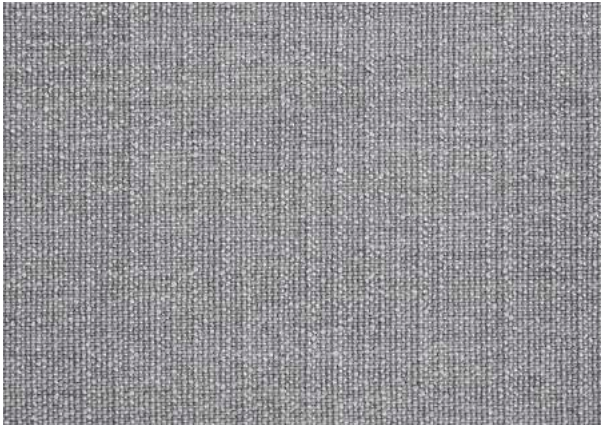
Fabrics / Botteghe



83.0115.01
White



83.0115.02
Rope



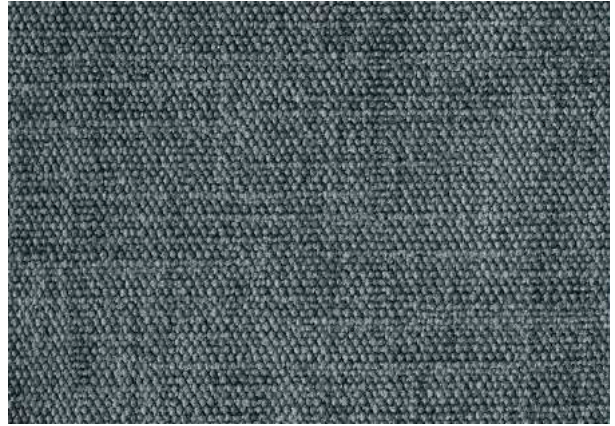
83.0115.03
Light grey



83.0115.06
Beige



83.0115.07
Clay

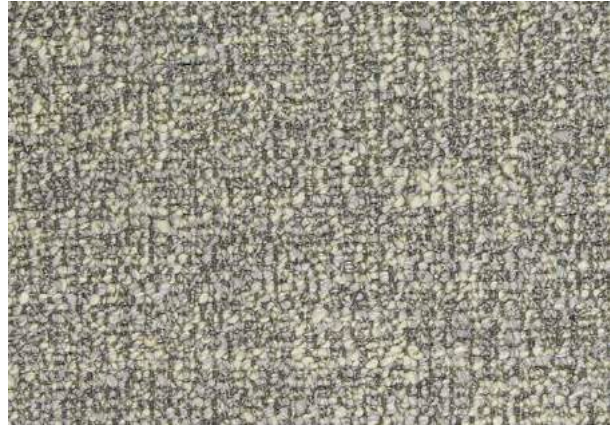


83.0115.08
Avion

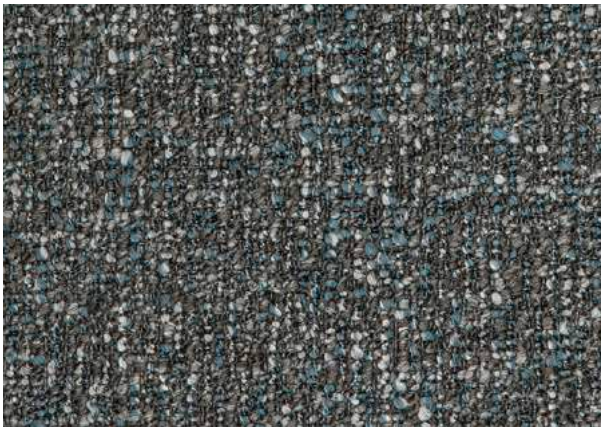
Fabrics / Noto



83.0119.02
Melange yellow



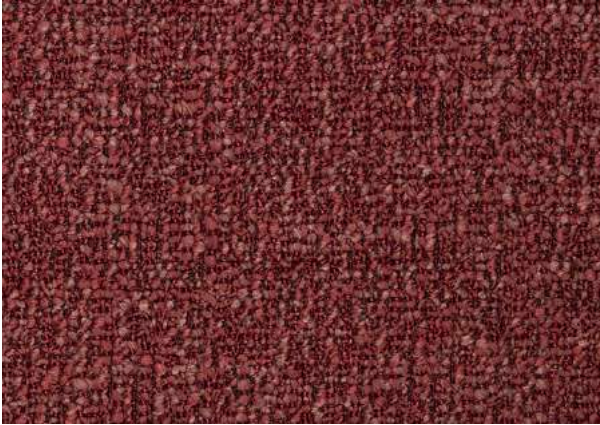
83.0119.03
Grey



83.0119.04
Melange blue



83.0119.05
Orange



83.0119.06

Bordeaux

Fabrics / Costiera



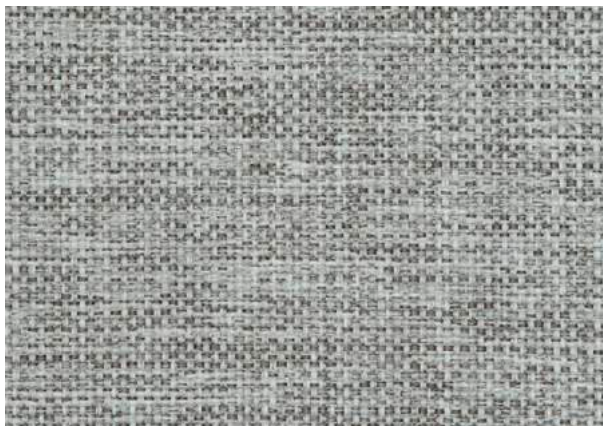
85.0062.01

White



85.0062.02

Rope



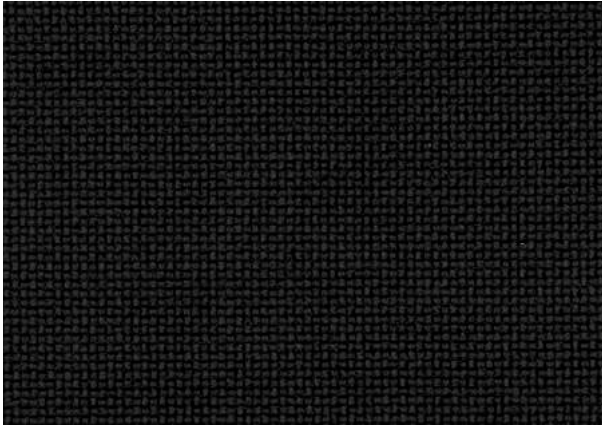
85.0062.03

Silver



85.0062.04

Iron



85.0062.05

Black coffe

Fabrics / Viaroma



86.0057.01
Melange beige/ivory



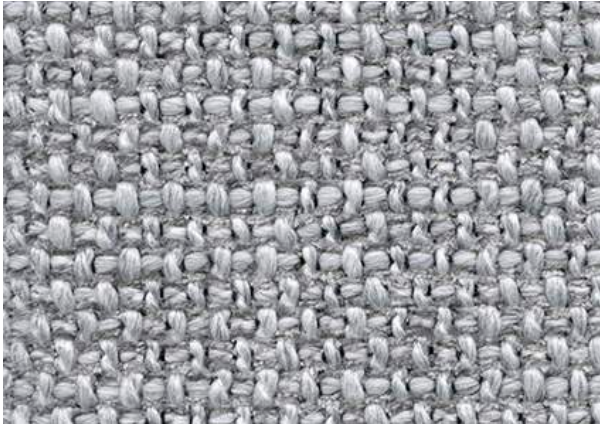
86.0057.02
Melange grey/blue



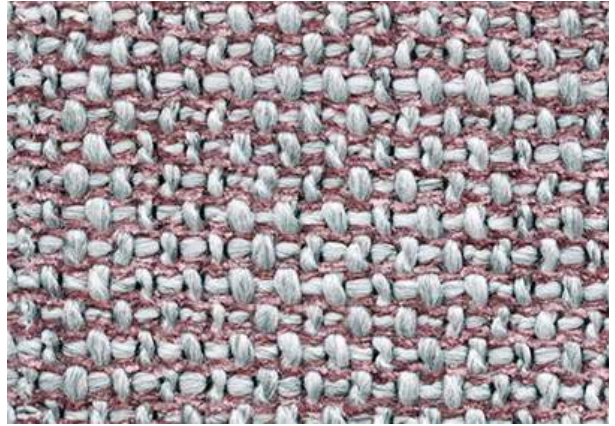
86.0057.03
Melange black /anthracit



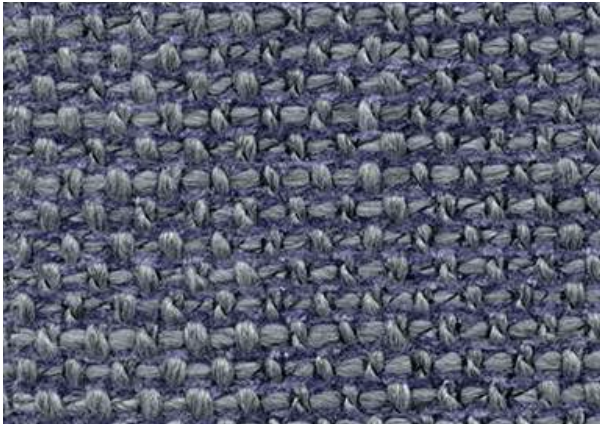
86.0057.04
MelangeMustard/Yellow



86.0057.05
Melange Platinum/Ice



86.0057.06
Melange Cyclamen/Ice



86.0057.07
Melange Indigo/Ice

Fabrics / Lagrange



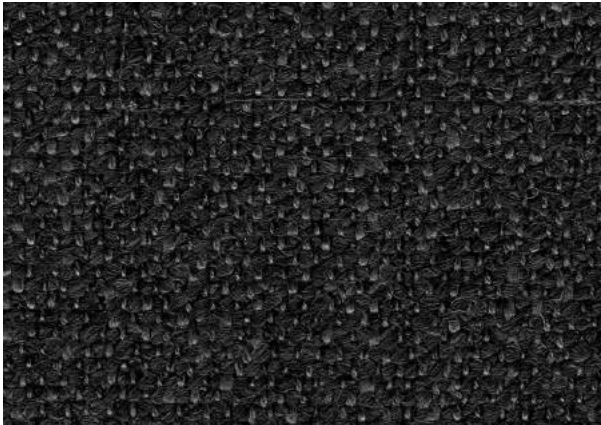
86.0059.01

White



86.0059.02

Silver



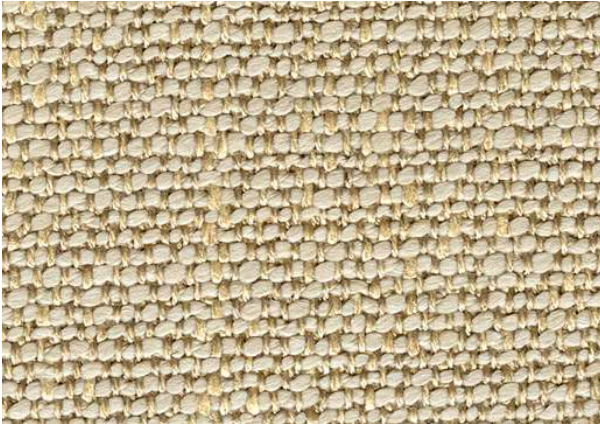
86.0059.03

Anthracite

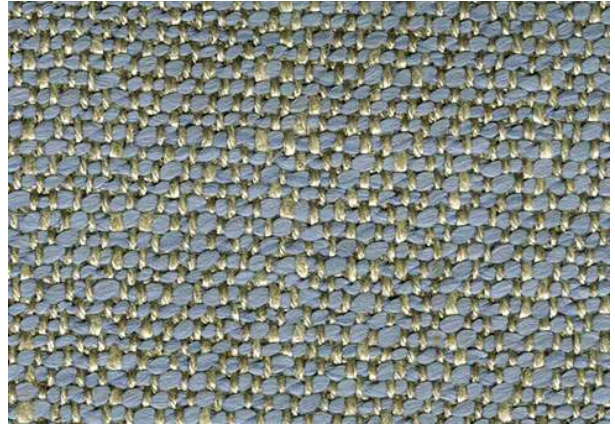


86.0059.04

Dark blue



86.0059.06
Cream

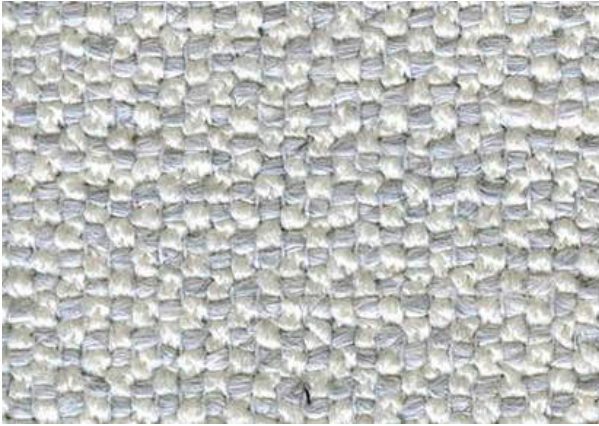


86.0059.07
Light blue melange

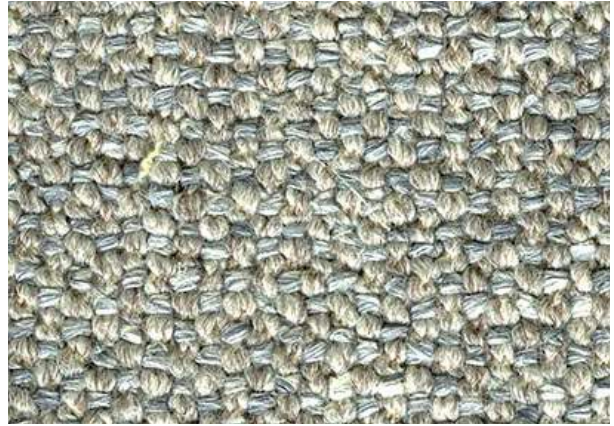


86.0059.08
Light greige

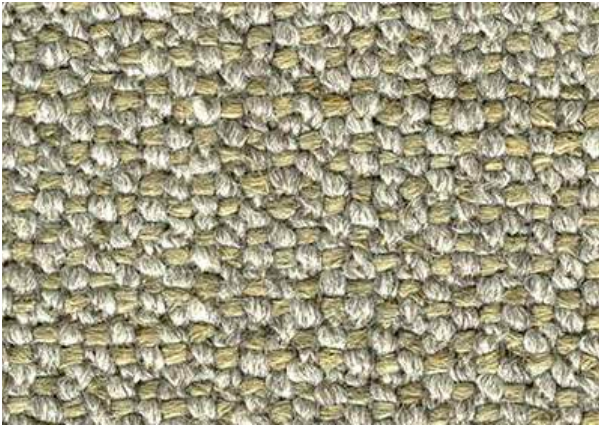
Fabrics / Delfino



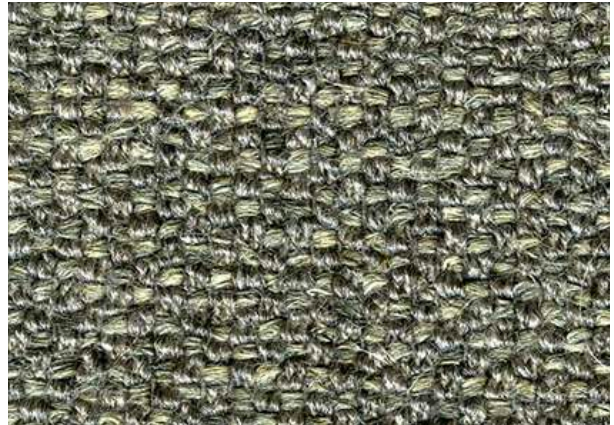
88.0052.01
Warm white



88.0052.02
Yellowish light beige



88.0052.03
Warm light grey



88.0052.04
Bronze dark greige



88.0052.05

Light grey

Fabrics / Softech



88.0055.01

Light grey



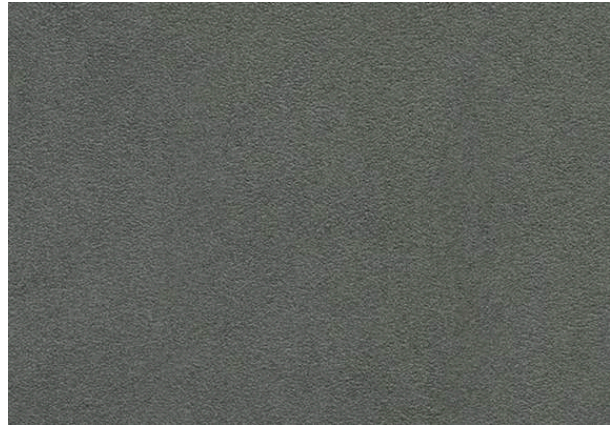
88.0052.02

Beige

Fabrics / Softech



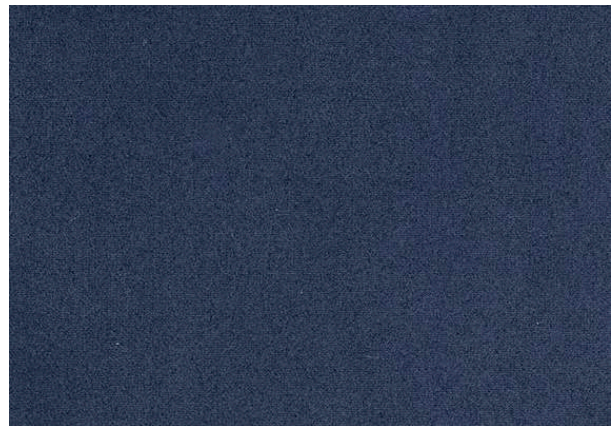
88.0055.03
Greige



88.0055.04
Grey



88.0055.05
Camel

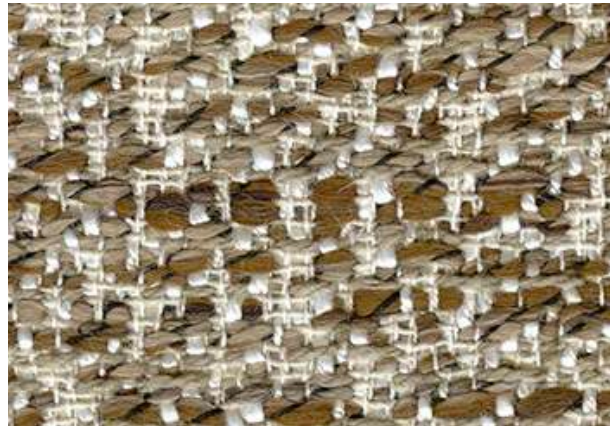


88.0055.06
Blue jeans

Fabrics / Farini



88.0057.01
Multicolor



88.0057.02
Biscuit



88.0057.03
Rubble

Fabrics / Ortigia



88.0058.01
Platinum



88.0058.02
Silver



88.0058.03
Yellow



88.0058.04
Mushroom



88.0058.05
Terracotta



88.0058.06
Black coffee

Fabrics / Sorrento



88.0059.01
Ivory



88.0059.02
Green cedar

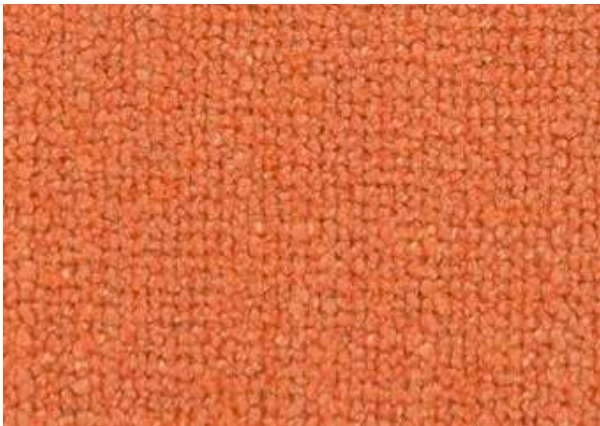
Fabrics / Sorrento



88.0059.03
Platinum



88.0059.04
Sky blue



88.0059.05
Mandarin orange

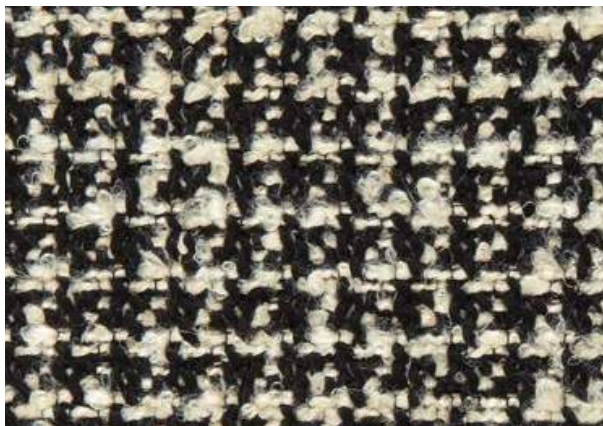
Fabrics / Stresa



88.0060.01
Beige melange



88.0060.02
Brown melange



88.0060.03
Black melange



88.0060.05
Teal melange

Fabrics / Borgospesso



99.0019.01

Brown



99.0019.02

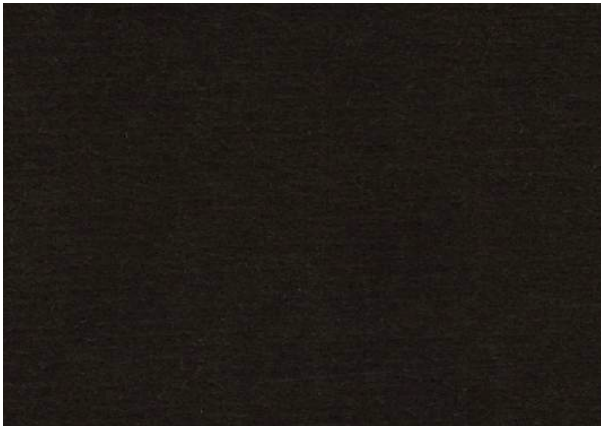
Cold white



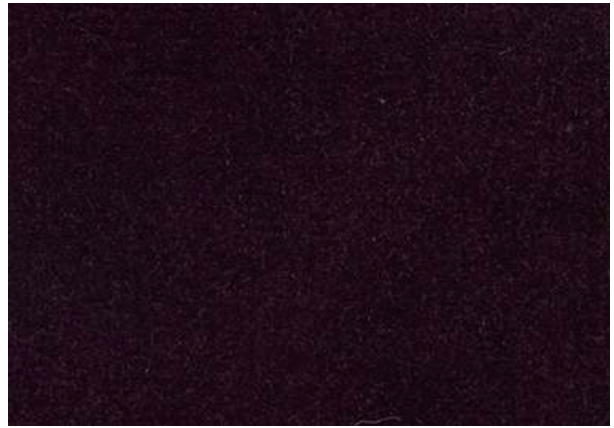
99.0019.03

Dark grey

Fabrics / Laguna



99.0020.05
Dark grey



99.0020.09
Wive



99.0020.10
Forest green



99.0020.12
Brick



99.0020.13
Blue jeans



99.0020.14
Wisteria



99.0020.15
Olive green



99.0020.16
Blue



99.0020.17
Chestnut brown



99.0020.18
Jade green



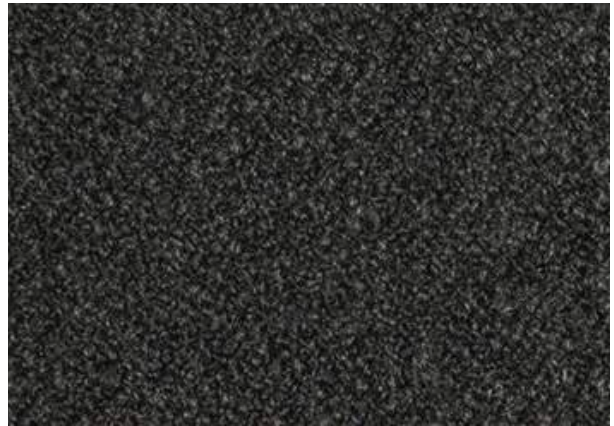
99.0020.19
Orange

Fabrics / Sanbabila



99.0028.01

White



99.0028.02

Anthracite



99.0028..03

Mud



99.0028.04

Rope



99.0028.06
Light grey



99.0028.07
Yellow ochre

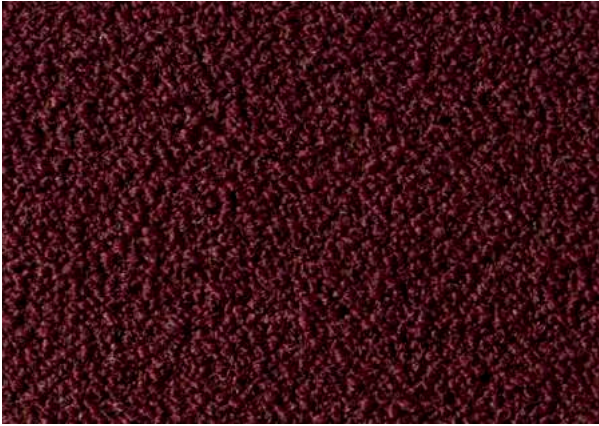


99.0028.08
Rust



99.0028.09
Avion

Fabrics / Sanbabila

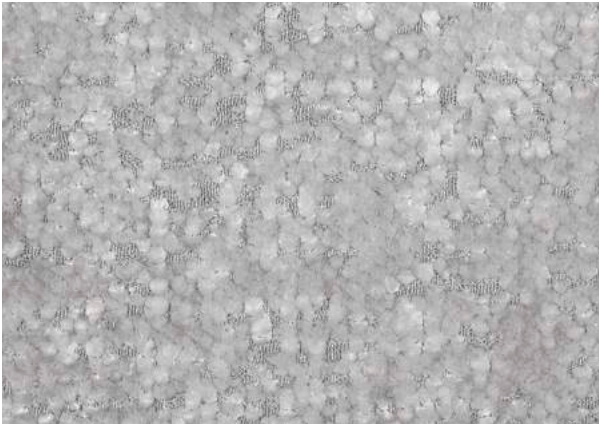


99.0028.10
Bordeaux



99.0028.11
Blue jeans

Fabrics / Galleria



99.0030.01
Platinum



99.0030.02
Light blue



99.0030.03
Antique rose



99.0030.04
Mustard



99.0030.05
Green

Fabrics / Portavenezia



9C.0002.01

Beige



9C.0002.03

Camel

4

Marble & Stone

Marbles used for Natuzzi furnishings reflect the natural and ancient beauty of precious and elegant materials. Each vein and imperfection tells about this charm. Quality, design and high aesthetic value meet in our products, in order to give life to real masterpieces. Every grain drawn by time, every imperfection distilled by Nature, every smooth or rough materiality of our stones and marbles have been produced by the precious, priceless work of time.

Rich materials, dense in texture, or luxurious and sophisticated, or pure white veined with gray, all of our marbles perfectly encapsulate our philosophy and commitment to making objects that will last. In the hands of our designers, these stones become unique, recognizable pieces that speak of a quality beyond expectation.

As natural materials it should be noted that they may have distinguishing features, like veining, slight superficial irregularities, small holes, colouring and inclusions. These characteristics make them unique and do not affect their quality or their structural strength. Inherent variations in natural stone and marble color, texture and veining, as well as variance resulting from the hand finishing process, are to be expected and celebrated. No two items will be exactly alike. As a natural and porous material, can be nicked, stained or scratched; avoid placing sharp or heavy objects on surface.



In-depth pages on the material



Black Granite

It is one of the darkest varieties of natural stone on earth. Granite is mostly used for external flooring, wall cladding, counter tops and vanity tops. Stone of African origin (Zimbabwe). Our top present a matte and brushed finish achieved with specific diamond brushes. The surface has been enhanced with a final water-repellent treatment. Absolute Black has a black ground colour with several little dark grey crystals. It is a magmatic rock of volcanic origin forming within Earth's crust when magma crystallizes and solidifies. For this reason, the final slab can show visible blowholes, which cannot be considered imperfections. The colour of the grain varies from dark grey to black, giving to the surface a homogeneous and elegant uniformity.



Fossena Stone

It is a limestone of North-African origin quarried in Tunisia. It is a stone with a compact and homogeneous background that is grey/brown in colour. This material stands out for its minimalist appearance, enhanced by a homogeneous and uniform structure. Flitting rust-coloured shadows and subtle ivory veins enliven the surface of the Fossena stone. The presence of some white salt or dark spots are another feature of this material. Fossena grey limestone is a sedimentary stone of marine origin and consists almost exclusively of the mineral called calcite. Small quantities may also contain dolomite, quartz and other clay minerals. These mineral or organic additives give limestone a heterogeneous colouring.

Many kind of nuances are possible on this natural stone as well as holes



Possible nuances and natural features (as fissures can be present in our product). Many kind of nuances are possible and normal to consider on this natural stone.

Calacatta Green

Calacatta Green is a precious marble with a white background and veining in a various shades of green. There is marked unevenness in the distribution of the veins. Slabs can have bold veining on some parts and be clear on others, making for a distinctive irregular appearance. It is of Asian origin and is specially processed in Italy. Being a marble of the sedimentary sandstone category, it also contains various types of crystals and grey stones distributed in a non-homogeneous way; these must be considered to be one of the qualities of this kind of marble. The top surface is glossy. The surface has been enhanced with a final water-repellent treatment.



Possible nuances and natural features as fissures can be present in our product. Many kind of nuances are possible and normal to consider on this natural stone.

Lilac Marble

White lilac marble comes from Turkey and due to its distinctive veined appearance and natural beauty, it is suitable for elegant interiors. It has bold veining and a colour variation that ranges from purple to black. Some slabs may have beige nuancing within. The top surface is glossy. The surface has been enhanced with a final water-repellent treatment.



Deeper down it has points and markings with colours that vary from yellow to beige and maroon. We apply a water-repellent impregnating sealer to the surfaces of our products to provide long-lasting protection.

Invisible Grey

Marble of Italian origin. Like a piece of abstract art, Invisible Grey stone has impactful inimitable patterning that looks as if an inkpot has been shattered across a pure white slab. It ushers a sense of harmony and cohesiveness into your home. The eye is irresistibly drawn to trace the delicate dark-grey lines contrasted against the pure white background. A superb addition to any setting, it has a light background with light blue nuances crossed by more intense gray veins that show a diagonal design with branched texture. At the bottom there are spots and markings with variations from yellow to beige and brown.



Is it possible to have frequent little fractures that form orthogonal drawings which are presented as little pigmentation or masses (by white color up to orange and gold). It is the result of a mix of different material as calcium carbonate and quartz mixed together with secondary other minerals. Features can be seen on the entire surface or concentrate in the veins. For cleaning, very gentle products without solvents or corrosive substances are recommended.

Sahara Noir

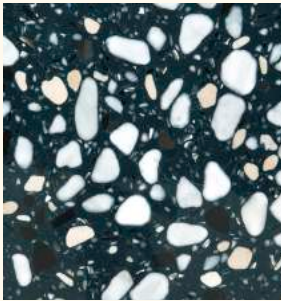
Sahara Noir is one of the most elegant marbles around. The black background with gold-and-white veins make Sahara Noir ideal for luxurious environments. Marble is formed through a metamorphosis process of sedimentary rocks. Its multiple colours stem from the presence of different minerals that overlap each other to perfection, creating different shades and veins. It is a very hard and durable material, particularly suitable for interior decoration. The main characteristic of this marble is its colored veins under the surface, which are slightly open and can create small surface cracks. The extreme hardness of the material and the different chemical composition between the black background and the veins creates some difficulties in the natural polishing process. It also causes the surface to react differently in different areas of the slab, resulting in more or less glossy areas. These are not fabrication defects but are a natural reaction of the different chemical components of the material.



Athens Silver Cream

Athens Silver Cream is a neutral stone that is anything but plain. This attractive light-cream marble is characterised by a threadlike striated patterning that is delicate, yet distinguishing. Allows for flexible design choices.

This tile has naturally occurring cross veins and the product cannot be purchased without these veins. It's part of the beauty of the stone. Please to not consider occurring veins as cracks, or imperfections.



Stardust Terrazzo Stone

It is s an agglomerate composed of a precious mix of marble and resin grits that are carefully selected and customised for colour and size specifically for Natuzzi. The material is then finished and smoothed. It stands apart for its skilful blend of large pieces of marble and tiny stones with an iridescent appearance for a modern exclusive feel. This material has an extraordinary resistance to abrasion and an even colouring. A top in STARDUST -Terrazzo Stone brings to mind "A Venetian Terrace", something which the whole world recognises as being artistically and culturally superlative and representative of the area of Venice and Italian manufacturing in general. The combination of different colours and materials means that all aesthetic needs can be met, including the most modern ones.

It is known, in fact, for its robustness and ease of maintenance. Although the treatment with water-repellent paint used on our surfaces protects the surface from the rapid penetration but it is good to remember that all liquid substances, must be quickly removed from all marble surfaces before they can penetrate deeply and create resistant stains and halos.



Calacatta Gold

Calacatta Gold is one of the most prestigious stones in the world. Quarried in the mountains near Carrara in Italy, this marble features a white background with huge veins which can range from gold to brown/grey. Its natural variation creates a beautiful appearance in every piece. Because of its rarity, Calacatta marble is mainly used in interior applications where it is very visible. One of its peculiarities is the presence of small pyrite intrusions, which give it golden-red hues. Calacatta oro is distinguished by its ivory/ butter colour with major veins ranging from golden to all shades of brown and grey. The weave of the grain varies continuously in the slabs and it is possible that it can have areas with marked grain, alternating with other large spaces of white, thus creating a particular shingle grain. Being a kind of sedimentary sandstone, marble contains various types of crystals and grey stones unevenly distributed, which are to be considered as an intrinsic characteristic of the marble itself.

Since it s a very delicate material, it is reinforced in the lower part with reticulation and resin coating. Being mainly composed of micro-crystals of calcium carbonate, it is recommended not to expose the surface to fizzy drinks and/ or alcohol, oil, wine, vinegar and various citrus fruits, as these will corrode the surface. For cleaning, we recommend very delicate products without solvents or corrosive substance



Travertino White

Extracted mainly in the Rapolano area (Tivoli - Italy), it has an ivory beige color with flashes of white and gray veins. Used both as a construction and decorative material, it is well suited for both indoor and outdoor use, as well as for the creation of sculptures. Travertine marble is a chemical-type calcareous sedimentary rock. Its color, due to the presence of oxides, varies from milky white to walnut, with shades ranging from yellow to red. It is a robust, resistant and compact natural stone, used both as a building and decoration material, both indoors and outdoors; represents a type of marble preferred in Italy and has been used outdoors for centuries for the construction of architectural works. The two most famous examples built with Travertine marble are the colonnade of St. Peter's Square and the Colosseum, in Rome. In Italy, the best travertines come from the Tivoli plain, furthermore, it comes in a great variety of finishes (rounded, patinated, antiqued, rustic), it has excellent resistance to wear, acid aggression, thermal excursions, heat, atmospheric and chemical agents and, a porosity that is not permeable to water: in other words, it is extremely resistant over time and this also means that it does not require special maintenance, as well as being practically perfect for any context and use.



Forest Brown

Coming from the quarries of India, the new Forest Brown marble is the result of millions of years of evolution. It has branched veins on the old roots of fossilized trees, this means that each slab is to be considered a unique piece. Forest Brown incorporates the warm colors of autumn with a golden brown, bronze, and brown background with irregular and orange branches. Compactness, resistance, solidity, hardness are the main characteristics of this type of marble. Our marble has a material touch deriving from a brushing process using diamond brushes. Natural stone retain a timeless beauty. Refined materials from all over the world make the environments exclusive, creating magnificent and refined atmospheres.



Imperial Grey

Imperial Grey is quarried in Italy. It has a non-uniform grey base streaked with grey/brown and white/yellow veins of thicknesses that vary from a few millimetres to two centimetres



White Carrara Marble

Native to Tuscany, White Carrara marble has a background color that can vary from off-white to light gray with thick streaks of dark gray or black. In its natural form it may have pinholes, so-called "taroli" and small crystals, which are to be considered a characteristic of this marble. This tends to respect the very essence of the nature of marble. For proper maintenance of the material, it is recommended to immediately remove acidic substances such as carbonated and/or alcoholic beverages, oil, vinegar and citrus fruits if spilled, so that they cannot affect the polish. Very gentle products without solvents or abrasives are recommended for cleaning.

Possible nuances and natural features as fissures (one or all of them may be present in our product). Many kind of nuances are possible on this natural stone as well as open holes.



Arabescato orobico

Is a fine Italian grey marble that sometimes also has gold veins. Its variety of colours and singular technical characteristics make it a unique and elegant marble. We apply a water repellent impregnating sealer to the surfaces of our products to ensure long lasting protection against oil and grease. Its peculiar technical characteristics make it unique and elegant. This marble is gray in color ranging to brown with white or yellowish veins and black fossils that are the distinctive features of this material. Since it is a very delicate it is reinforced at the bottom with crosslinking and resin coating



Volakas

It is a natural Greek marble. A precious stone, Volakas is white with cream, hazelnut and light grey veins. Volakas marble comes in two versions: classic, with parallel veins, and cloudy, with veins that form distinctive irregular clouds. It sometimes has resin-cured micro-fractures which represent a unique feature of the stone.



Travertine Titanium

Titanium Travertine is a special variant of the more classic travertines. Originating from Iran, it has an attractive brown colour that can verge on various nuances of grey. This material is increasingly used in modern-looking settings and often combined with steel and concrete. Travertine belongs to the limestone family and is a sedimentary stone of continental origin. Travertine is a mono-mineral rock, meaning a rock composed of a single mineral. Its main component is calcite. It may also contain clay minerals, haematite, limonite and quartz. For this reason it can take on different colour variations.

Its highly absorbent and non-acid resistant structure must be taken into consideration. It is essential to protect its surface over time while maintaining its original porous structure unaltered - with those holes clearly visible to the naked eye - and to respect and enhance all its delicacy and aesthetic appeal. Many kind of nuances are possible on this natural stone as well as open holes and cracks.



Silver Wave

It is a granite from the Far East with a striking combination of light and dark grey nuances and veins that range from black to yellow. Modern and elegant, it also adapts to more classical settings adding a touch of class to any room. We apply a water-repellent impregnating sealer to the surfaces of our products to ensure long-lasting protection.

Marble & Stone



Invisible Grey

Furnishing Details: Estro - Herman - Ido



White Carrara Marble

Furnishing Details: Cabaret; Libra; Frost



Volakas

Furnishing Details: Icon, Fil Rouge



Athens Silver Cream

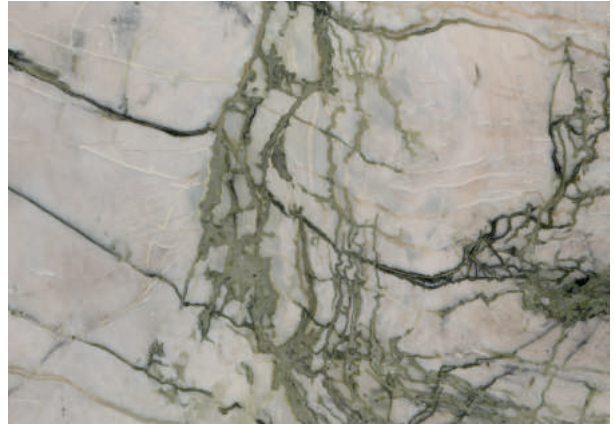
Furnishing Details: Chocolat

Marble & Stone



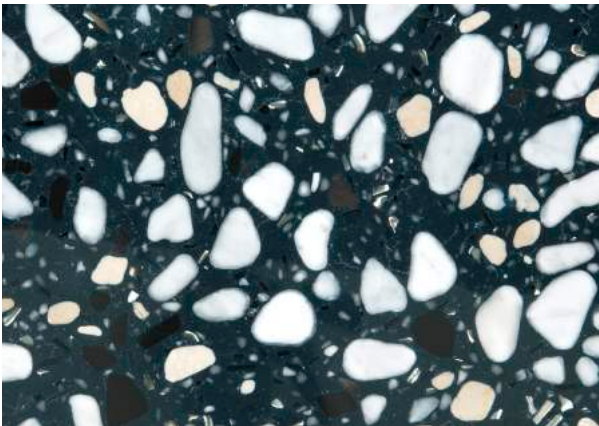
Lilac Marble

Furnishign Details: Estro; Tempo; Splash



Green Calacatta

Furnishing Details: Campus



Stardust Terrazzo Stone

Furnishing Details: Voyage



Calacatta Gold

Furnishing Details: Gutta - Herman - Ido -
Munari - Tempo



Travertino White

Furnishing Details: Feudo - Tempio



Travertino Titanium

Furnishing Details: Cabaret



Radica Forest Brown

Furnishing Details: Herman



Sahara Noir

Furnishing Details: Estro - Omega

Marble & Stone



Orobico Marble

Furnishing Details: Herman - Icon



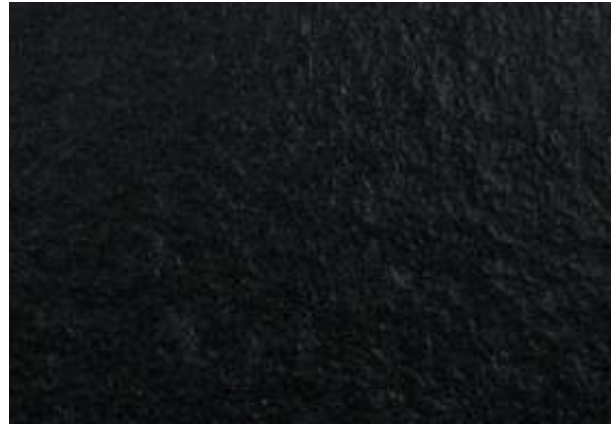
Fossena Stone

Furnishing Details: Frost



Imperial Grey

Furnishing Details: Chocolat



Black Granite

Furnishing Details: Skyline



Silver Wave

Furnishing Details: ldo

5

Performance & Innovative Materials

Design and innovative mineral surfaces are a real innovation that is revolutionizing the world of architecture and interior design. New materials that are distinguished by their extraordinary technical, ecological and resistance qualities.



In-depth pages on the material



Fenix

Fenix is not only beautiful to look at but, most importantly, it is also a high-tech material, made unique by their characteristics. FENIX have these characteristics by undergoing a particular series of processes, including a multilayer coating and the use of next-generation acrylic resins, which are hardened and fixed through an Electron Beam Curing process. With low light reflectivity, their surface is extremely matt, soft touch and anti-fingerprint. FENIX materials are highly resistant to scratches, abrasion, dry heat, acid-based solvents and household reagents. Thermal healing of superficial micro scratches is also possible. FENIX surfaces have a unique non-porous external layer, allowing the material to stay neat with simple, everyday care and cleaning methods.



Bio Malta Light Grey

Bio - Malta is a coating consisting of a single-component mortar in aqueous emulsion and natural fillers such as quartz, marble, recycled glass, and cocciopesto- this makes our resin environmentally friendly. It is a Bio-compatible and eco-sustainable finish, odorless and non-toxic, stain-proof, non-slip, and easy to maintain. The bio-malta used for this project is an aqueous compound of single components with a mix of natural materials such as quartz, terracotta powder, marble, mother of pearl etc., with a thickness of about 2mm. The application of the materials is entirely manual. The result is characterized by more or less evident signs that make it a unique and refined solution. Highly specialized craftsmen work with care and skill on every single piece, to guarantee a result of absolute quality. Bio Malta is totally BPA Free and it is composed of selected raw materials ensuring that the coating does not undergo aesthetic or chromatic variations.



CARE & MAINTENANCE

As with all materials, regular care in cleaning the surface and periodic maintenance is required. In case of non-stubborn stains, treat the hob with a cloth, water and a normal detergent for domestic use. If the stains are more stubborn, treat the surface with a Scotchbrite sponge and an abrasive creamy detergent, making a circular motion. BETACRYL® resists heat much better than other coating materials, however, placing pots, coffee makers or any other very hot object directly on the hob could cause damage to the surface; we therefore recommend that you always use trivets or bars in heat shield steel.

Betacryl White / Matt

Pure Acrylic Stone is a Solid Surface manufactured approximately two thirds with aluminum trhydroxide and one third with acrylic resin and natural coloring pigments. The aluminum hydroxide gives the product excellent mechanical resistance, while the acrylic resin guarantees hygiene, suitability for contact with substances, impermeability and color stability over time. Despite its stone-like texture, it is easy to work with woodworking equipment and restorable. It can be joined imperceptibly and a simple thermoforming process allows to create curved surfaces, leaving free space for the designers' imagination. Innovative material widely used in the design and construction of new environments, able to guarantee safety and the highest level of hygiene, resistance and durability to maintain functionality over time. The hygienic and antibacterial characteristics of BETACRYL® can significantly contribute to the reduction of the spread of infections and communicable diseases.



The finish may be subject to detectable natural differences between one product and another. These aesthetic differences, however, give uniqueness and value to the product. Small differences in coloration and surface are therefore not grounds for complaint. This is a revolutionary coating with innovative features, sustainable for the environment while ensuring high functional and aesthetic standards.

Brushed Lecce Stone

Is a natural, versatile and exclusive choice in the production of furnishings that gives extreme elegance and modernity. Made from natural and recycled raw materials, this finish is composed of a mixture of clay, natural fillers such as quartz and silica sands, recycled marble powder and acrylic binders that make it possible to obtain natural, unique and valuable surfaces, giving each element an iridescent and distinctive note. Brushed Lecce Stone has a high aesthetic value, presenting marble veins and shades that are the result of artisanal application. All this is also enhanced by the typical visual depth of the material surface effect. It is easy to clean with a damp cloth (do not use abrasive sponges), clean water and mild all-purpose cleaners. Avoid denatured alcohol, acetone, bleach or highly basic ph cleaners. Surfaces, although waterproof, should not get contact with liquids for long periods.



Ceramica Macchia Vecchia

It's a modern, high-performance material that responds to the needs of an ever-changing market where beauty is required to be accompanied by qualities of efficiency and safety. It presents an ivory white background and a strong grain with shades ranging from dark to light gray to beige and rust orange tones. Design with a unique and distinctive personality, but at the same time elegant and refined. Thanks to its nuances, our ceramic products can be used in several residential and design contexts.

*Our ceramics are guaranteed and certified for:
Water resistance surface,
abrasion resistance,
stain resistance,
Color resistance to light.*

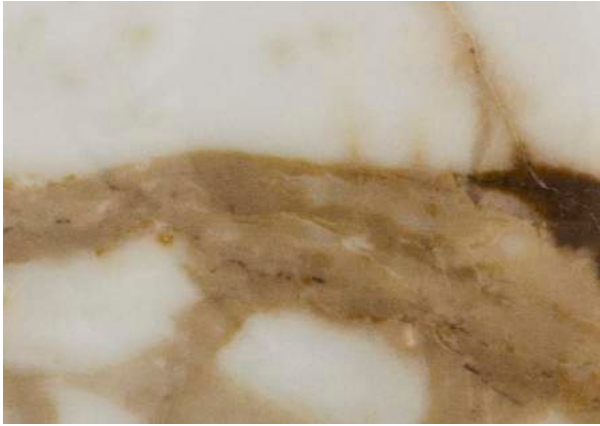
Ceramic countertops are finished in the back with a fiberglass treatment that has the task of increasing the mechanical strength of the slab, making it more resistant to bending and facilitating its operations.



Grey Cement Resin

It is a new decorative coating based on precious metals and completely non-toxic resins. This special finish is completely resistant to bacteria and offers extremely high resistance and washing protective.

Performance & Innovative Materials



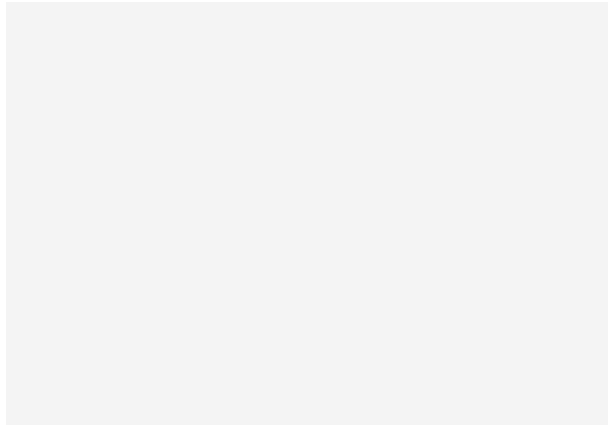
Macchia Vecchia Ceramic
Furnishing Details: Campus



Brushed Lecce Stone
Furnishing Details: Adam



Bio Malta Light Grey
Furnishing Details: Ombra



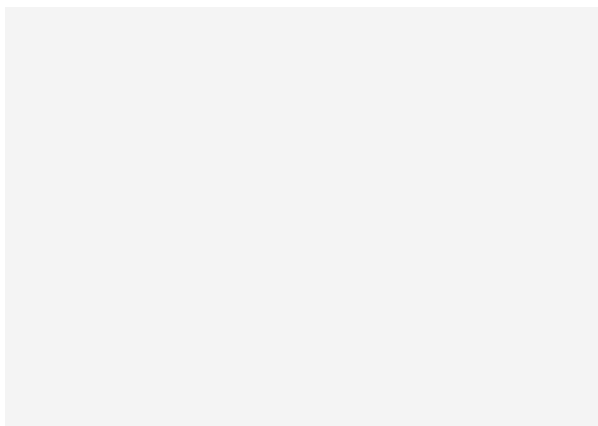
Betacryl Matt White
Furnishing Details: Libra

Performance & Innovative Materials



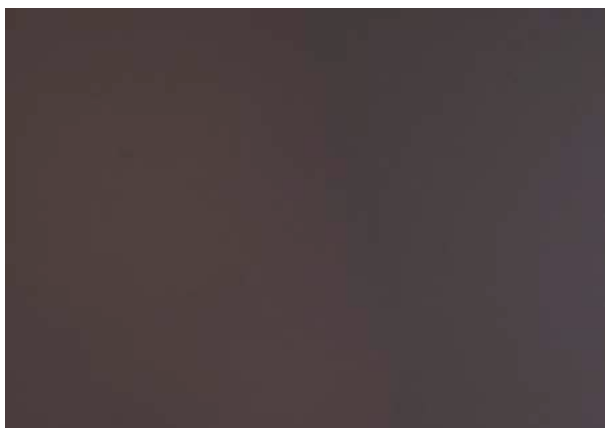
Fenix Grigio

Furnishing Details: Virgola



Fenix White / Matt

Furnishing Details: Inu



Fenix Cacao Orinoco

Furnishing Details: Virgola



Cement Resin

Furnishing Details: Saturday

6

Wood

Wood is a natural material that was among the first to awaken man's creativity. It always knows how to give unique emotions.

But you have to know how to handle it skilfully if you want it to return all its charm to you. The superior beauty of our wood comes from fine workmanship and rigorous controls throughout the production chain. Quality standards are achieved precisely by expert furniture craftsmanship, which is best expressed in the Natuzzi Italia collections. The wide range of exquisitely detailed finishes extends to more modern furniture styles as well. The timeless elegance of natural wood meets the sophistication of lacquered wood surfaces. Tables, chairs, sideboards and bookcases are not only versatile, but emanate warmth and are delightfully tactile. Every home opens up to a material whose beauty will never fade.

Color variations.

Wood is a natural raw material. It therefore presents differences in color and texture. In the course of time, color variations may occur, more or less noticeable, in some cases different depending on the texture of the surface or its location. To delay this natural process, we recommend avoiding exposing complements and furniture to direct sunlight.

Solid Wood:

It's that portion of wood that is extracted from the heartwood, the innermost part of a log. It follows that each type of solid wood will have its own characteristics depending on the type of plant from which it was obtained. Before it can be used and processed, solid wood needs a long period of seasoning to stabilize its products. This process can take place naturally or through artificial drying processes. Solid wood, for these reasons, is a type of wood that we can define as completely natural, and therefore it must be expected that over time it can undergo more or less slight alterations in color and shape.

Medium-density fibreboard (MDF):

An engineered wood-based product composed of wood fibres or fascicles of wood fibre submitted to processing by a thermomechanical defibrator under high temperature and pressure. The fibres are held together with hardening synthetic resin.

Veneer:

It can be defined as the operation of coating a wooden panel with a noble wood veneer. This type of processing has been carried out for centuries and originally, it was carried out with different types of wood. A piece of furniture veneered is a furniture of great value, characterized by excellent aesthetic performance and functional performance. Depending on the surface (or panel) to be veneered, the craftsman can choose to use a single veneer or several sheets placed side by side, depending on the specific project. It can therefore highlight particular finishes or flammings. The treatment represents the perfect fusion between performance and visual impact, and guarantees excellent flexibility to the products made.



Wood / Wood



Natural Ashwood / 54

Furnishing Details: Feudo

Upholstery Details: Sohay



Black Ashwood

Upholstery Details: Eufolia



Honey Ashwood / 55

Furnishing Details: Adam

Upholstery Details: Adam - Eufolia - Viaggio



Ashwood Tobacco / 44

Furnishing Details: Campus - Fortuna - Ombra - Valle - Vesta - Nodo

Upholstery Details: Campus - Cava - Conca



Grey Ashwood

Furnishing Details: Fortuna - Saturno



American Walnut

Furnishing Details: Gutta



Eucalipto

Furnishing & Sofa details: Campus



Walunt

Furnishing Details: Kendo - Phantom - Sovrana

Wood / Wood



European Walnut / 39

Furnishing Details: Monument -
Naru - Neva

Upholstery Details: Amalia - Margaret - Cassia - Penelope



Smoked Oak / 32 / 12

Furnishing Details: Estro - Fil Rouge - Icon -
Kendo - Tempo - Saturday - Estro - Fenice - Herman -
Munari - Phantom - Saturno - Svevo - Venere -
Tempio

Upholstery Details: Kendo - Positano - Amalia -
Aura - Luna - Margaret - Cassia - Penelope -
Conca - Colle

7

Laquered

A finish is not just the outward appearance of an object, but represents its identity, its essence, the way it speaks and relates to the world. An alchemic act of creation made of research and intuition where material, workmanship and pigmentation mould each other in a song of pure harmony. Natuzzi offers different lacquer finishes to chromatically connote the solid surfaces of its collection: the wide range of colours or textures available suits any type of product or style.

The company uses not only a brushed lacquer with a glossy effect, but also one with a matt appearance: both results serve to maximise the aesthetic appearance of the product, highlighting or emphasising its overall harmony. A lacquered finish is a type of coating that uses lacquer: an opaque coloured substance, based on polyester and/or polyurethane, which hides the wood grain under a uniform tone or gives an extra touch to worked metals.

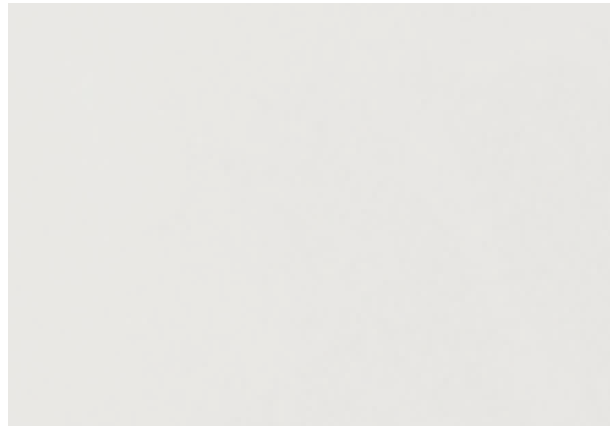


Laquered / Laquered



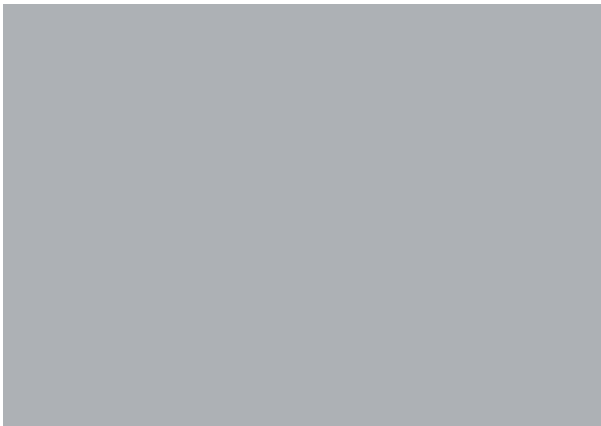
White/Matt & Glossy

Furnishing Details: Feudo - Mondrian



White Chalk/ Matt & Glossy

Furnishing details: Icon - Saturday - Venere



Light Grey/Matt

Furnishing Details: Mondrian



Piombo/Glossy

Furnishing Details: Fil rouge



Anthracite/Matt & Glossy

Furnishing Details: Saturday



Blue/Matt & Glossy

Furnishing Details: Fil rouge, Melpot



Azzurro/Matt

Furnishing Details: Phantom



Light Blue/Matt

Furnishing Details: Mondrian

Laquered / Laquered



Jade/Glossy

Furnishing Details: Venere



Cement/Matt

Furnishing Details: Fenice, Icon



Mink/Glossy

Furnishing Details: Fenice



Orange/Glossy

Furnishing Details: Campus



Wine/Matt

Furnishing Details: Melpot, Phantom



Coffee/Matt

Furnishing Details: Euclide

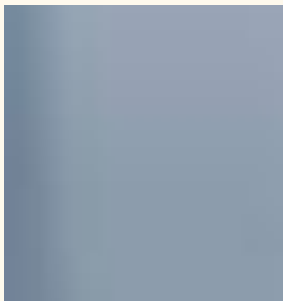
8

Glass & Mirror

It can be delicate, or it can be solid. It can show itself, it can let light through, it can shine magically. It can reflect and refract, it can be colored in the most amazing shades. Glass is infinitely versatile and has accompanied our lives since time immemorial. It is not we who admire it, it is he who observes us from its nearly 5,000 years of history. In the minds and hands of our designers it can take infinite forms and have endless functions. It can be yet another original idea for any piece of furniture and unusual geometric shape. With the only goal of becoming a visible protagonist of each of our creations. Even when it is invisible.

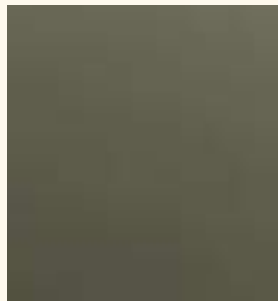


In-depth pages on the material



Lacquered Glass

Back-lacquering is the process of coloring glass. Lacquered glass, with a gloss or matte finish, is an extremely versatile material that can be combined with other materials such as wood, stone and metal, enlivening any interior.



Stopsol Glass

Stopsol is a glass on which by pyrolysis a partly reflective metallic layer is placed. This process results in a special mirror effect. These products are distinguished by their exceptional reflective glass characteristics that provide exceptional visual comfort with high performance.



Etched back Painted Glass

Satinized or etched glass through industrial processing, made on the whole surface is subjected to a permanent chemical process that gives the glass a velvety soft-touch appearance, eliminating transparency but not light transmission.



Glossy Mirrored Glass

These are extremely decorative and versatile.



Extra - Clear Glass

Extra-clear Glass
It differs essentially from conventional basic float products and ordinary glass by the special treatment to which it is subjected, which results in the removal of 90% of its iron oxide. This results in a more neutral aesthetic appearance and maximized transparency. The other element that determines its almost total transparency is the choice of a type of ultra-pure silica. Outstanding level of performance in terms of transparency that translates into a harmonious and optimized contrast of light, so that colors are left in their natural, unaltered appearance. *purissima*. Outstanding performance level in terms of transparency that is reflected in a harmonious and optimized contrast of light, so as to leave colors unaltered and in their natural appearance. A perfect aesthetic choice when you need great brightness or when you want to ensure the most authentic color output possible.



Laminated Glass

Laminated glass, are to be understood as the union of two sheets of glass through which various materials such as ceramics, fabrics, colored films, metals and wood can be integrated. This glass produces unique and sophisticated decorative effects. Laminated glass is processed through a hot process that binds the different materials together in an indissoluble manner.

Glass / Glossy retro-lacquered glass



Glossy Brick

Furnishing Details: Estro



Glossy Chocolate

Furnishing Details: Cala



Glossy Green

Furnishing Details: Estro



Glossy Lilac

Furnishing Details: Estro



Glossy Grey - Blue

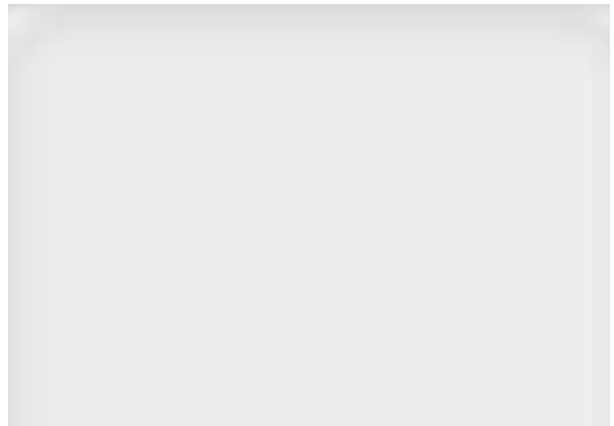
Furnishing Details: Cala

Glass / Stopsol



Green Stopsol

Furnishing Details: Campus



Stopsol Transparent

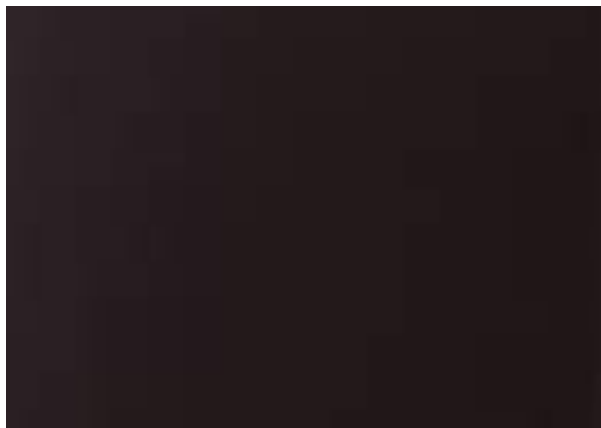
Furnishing Details: Patio

Glass / Etched glass



Etched White Glass

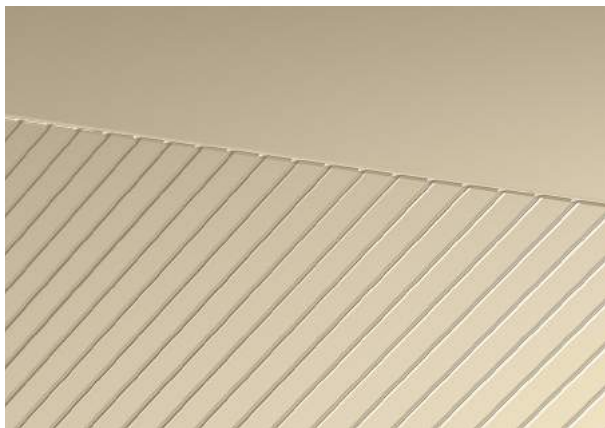
Furnishing Details: Cabaret, Fortuna, Saturno



Etched Coffee Glass

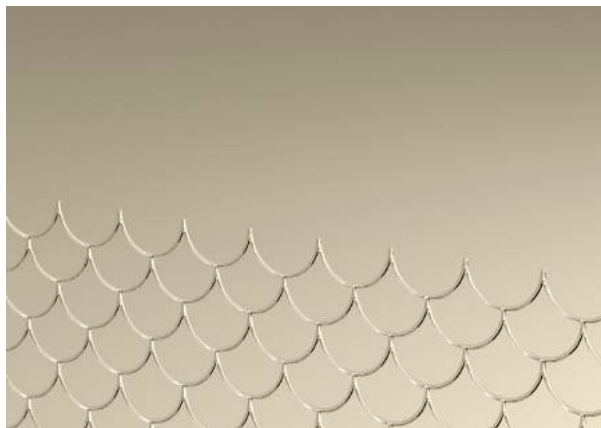
Furnishing Details: Cabaret, Fortuna, Herman, Saturno, Tempo

Glass / Glossy mirrored glass



Bronze Mirror

Furnishing Details: Sailor



Serigraphy Bronze Glass

Furnishing Details: Mermaid



Mirrored Bronze Glass

Furnishing Details: Herman - Kendo



Fume' Glass

Furnishing Details: Arch, Labirinto



Mirrored Glass

Furnishing Details: Labirinto, Taylor



Engrave Fume' Mirror

Furnishing Details: Luminarie

Glass / Transparent glass



Extra Clear Glass

Furnishing Details: Labirinto, Mercurio



Ribbed Glass

Furnishing Details: Campus



Transparent Bronze Glass

Furnishing Details: Cava



Glossy Black Glass

Furnishing Details: Chocolat



Fume' Transparent Glass

Furnishing Details: Cava, Labirinto, Mercurio

Glass / Laminated glass



Gold & Glass

Furnishing Details: Voyage

9

Metal

Metal is an extremely durable and versatile material that can enhance the aesthetic side of products and embellish their design. Its mechanical resistance, combined with its lightness, make it a material suitable for the most diverse uses. Metal allows for a truly unique material sensation: multifaceted, polymorphic, it allows the observer to notice ever different worlds thanks to plays and refractions of light. Just as the most elegant accessories complement an outfit to perfection, metal finishes highlight a room, making it the centre of perspective. Solid, yet ethereal, it can give any home or design product an unequivocal value, just as in the case of Natuzzi furniture complements.

Metal working processes

Powder coating

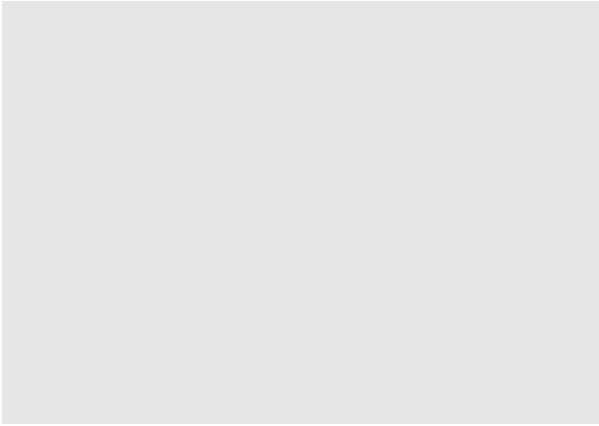
Powder coating is a process of coating metal surfaces with an organic film, carried out for decorative purposes and/or protection against corrosion and aggressive agents. Workpieces are coated with paint powder based on synthetic resins, which adheres by electrostatic effect. Then passed through an oven with high temperatures, the paint first melts and then polymerizes. Powder coating is carried out in equipped plants.

Galvanization

This is a process by which an artifact of other metal material is coated with a thin layer of metal to protect it from corrosion and/or aging. It is popular in modern furniture. Hot Galvanization: the artifact is completely immersed in a galvanic bath (molten metal) and it is covered with a protective film. Cold Galvanization: the artifact is immersed in an Electrolytic Solution to make the protection adhere to the artifact itself through Electrolysis.



Metal / Metal



White/Matt BF02

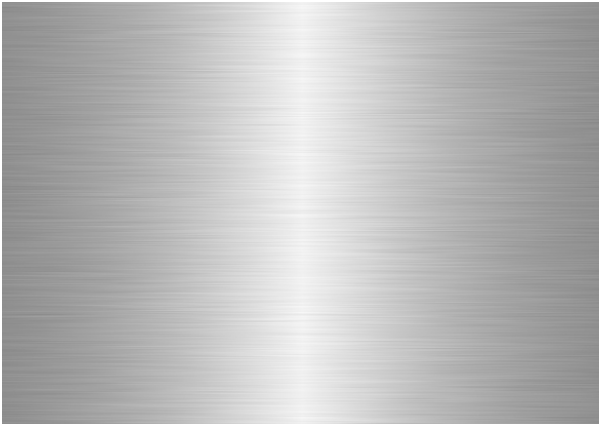
Furnishing Details: Nana'

Upholstery Details: RE - Vive



Nickel Satinato 75

Upholstery Details: Opus - Fidelio - Valzer - Amadeus -
Platea - Clemmie - Genny



Silver 89

Upholstery Details: Dominio - New Classic



Pewter 80

Furnishing Details: Chocolat - Herman - Kendo
Upholstery Details: Pablo - Ilia - Herman - Tulip -
Jeremy



Brick/Matt 73

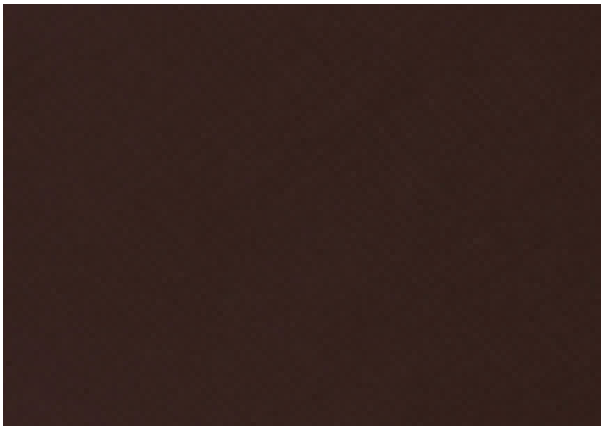
Upholstery Details: Adam



Matt Coffee / 03

Furnishing Details: Euclide - Mondrian

Upholstery Details: Re-Vive Cammeo



Chocolate 86

Upholstery Details: Ema - Cammeo



Matt Black 79-87-BF01

Furnishing Details: Estro - Fil Rouge - Nanà

Upholstery Details: Campus - Adam - Botanic - Argo - Lenny - Oblo - Re-Vive - Dominio

Metal / Metal



Light Gold 88

Furnishing Details: Tide - Voyage - Nodo

Upholstery Details: Wave - Ensis - Adore



Champagne 46

Furnishing Details: Campus - Colosseo

Upholstery Details: Campus -



Gold 90

Furnishing Details: Icon - Kendo - Svevo - Venere

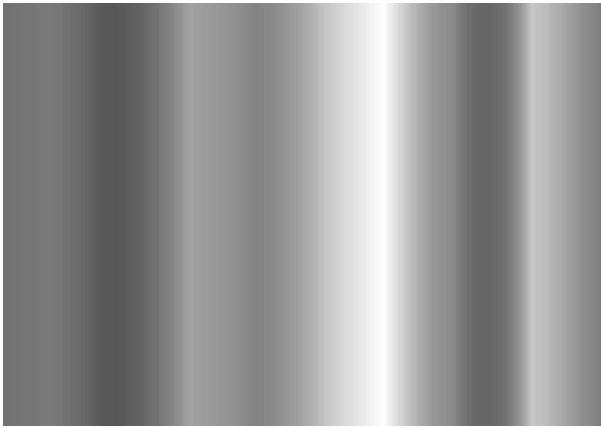
Upholstery Details: Kendo



Bronze 81

Furnishing Details: Herman

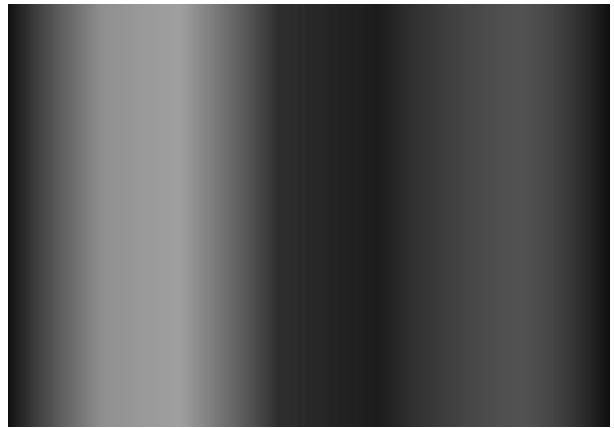
Upholstery Details: Herman



Glossy Chrome 77

Furnishing Details: Cabaret - Skyline

Upholstery Details: Tratto - Volo - Opus - Capriccio
- Philo - Duca - Stan - Estro - Brooklyn - Valzer -
Sophy - Anteprima - Cammeo - Dolly - Leyra -
Aftereight - Dodi - Lave



Black Chrome/78/71/45

Furnishing Details: Arch - Ido - Shield - Skyline -
Venere

Upholstery Details: Dove - Euforia - Levante -
Tratto - Capriccio - Leaf - Fidelio - Philo - Milano
- Duca - La Scala - Milano - Stan - Estro - Brooklyn -
Seagull - Sophy - Anteprima - Dolly - Leyra - After-
eight - Dodi - Talia - Couture - Clemmie - Cammeo



Nickel Silver

Furnishing Details: Tempo

10

Care and maintenance

Leather

p. 8 - 11

Fabrics

p. 38 - 48

Marble - granite

Stone surfaces

Use a soft or microfiber cloth and simply wipe with water and neutral (acid-free) detergent with low alkalinity. Avoid the use of aggressive or highly abrasive products (e.g., detergents with granules or micro-dust), as well as metal scouring pads and acid-based detergents. Immediately clean all stains produced by liquid and/or acidic substances such as fruit juices, wine, vinegar etc.

Calacatta green

The final appearance of the top is glossy. A final water-repellent treatment is provided on the surface. For proper care of marble, it is recommended that acidic spills be avoided if possible and, if they occur, cleaned up immediately so as not to damage the polish. When cleaning marble, use very gentle products that do not contain thinners or corrosive substances. For cleaning Nero Assoluto, it is recommended to use very gentle products (Marseille soap) without solvents or corrosive substances and non-abrasive brushes. For proper maintenance of the material, it is recommended to immediately remove acidic substances such as carbonated beverages and/or spilled alcohol, oil, vinegar and citrus so that they cannot affect the texture.

Wooden surfaces

Solid and veneered

Use a soft cloth and neutral detergent or a slightly damp microfiber cloth.

For thorough cleaning, use a microfiber cloth dampened with nonabrasive neutral detergent diluted in water, taking care to follow the natural grain of the wood without insisting with cleaning on a specific spot.

Remove any detergent residue with a well-wrung cloth and dry all surfaces very well.

Lacquered surfaces

Dust your furniture regularly with a soft, dry cloth. Do not use abrasive materials such as steel wool pads or products containing abrasive creams or powder detergents. For perfect cleaning of these surfaces, use a microfiber cloth and a specific cleaning product. Absolutely avoid the use of acetone and ammonia, as well as cloths containing ammonia.

Glass surfaces

Transparent or lacquered back

To clean, wipe off dirt stains using a soft or microfiber cloth dampened with water or common glass cleaner. Then wipe with a soft dry cloth especially at the joints of the glass. On opaque glass, if halos remain, distilled water can be used with a clean soft or microfiber cloth. Do not use abrasive cleaners and sharp objects.

Metal elements

To clean the surface, use a sponge moistened with a little diluted mild soap, dry thoroughly. Do not use abrasive products.

This brochure is based on the latest products information available at the time of printing.

Natuzzi S.p.A. reserves the right to make any aesthetic and/or functional changes to products at any time and without warning, should it consider them useful in relation to commercial or production needs. Natuzzi S.p.A. refuses all liability for any omissions and/or printing errors.

All rights reserved.

The trademarks, logos and designs are the property of Natuzzi S.p.A. Any unauthorised reproduction, copying, duplication, disclosure, alteration or use (in any way) of the content is strictly prohibited.



For further info and details
please refer to Product Catalogue
or E-manual



Find the nearest store
Natuzzi Italia

