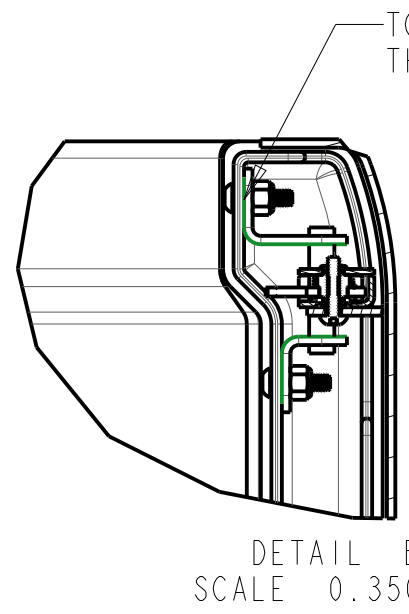
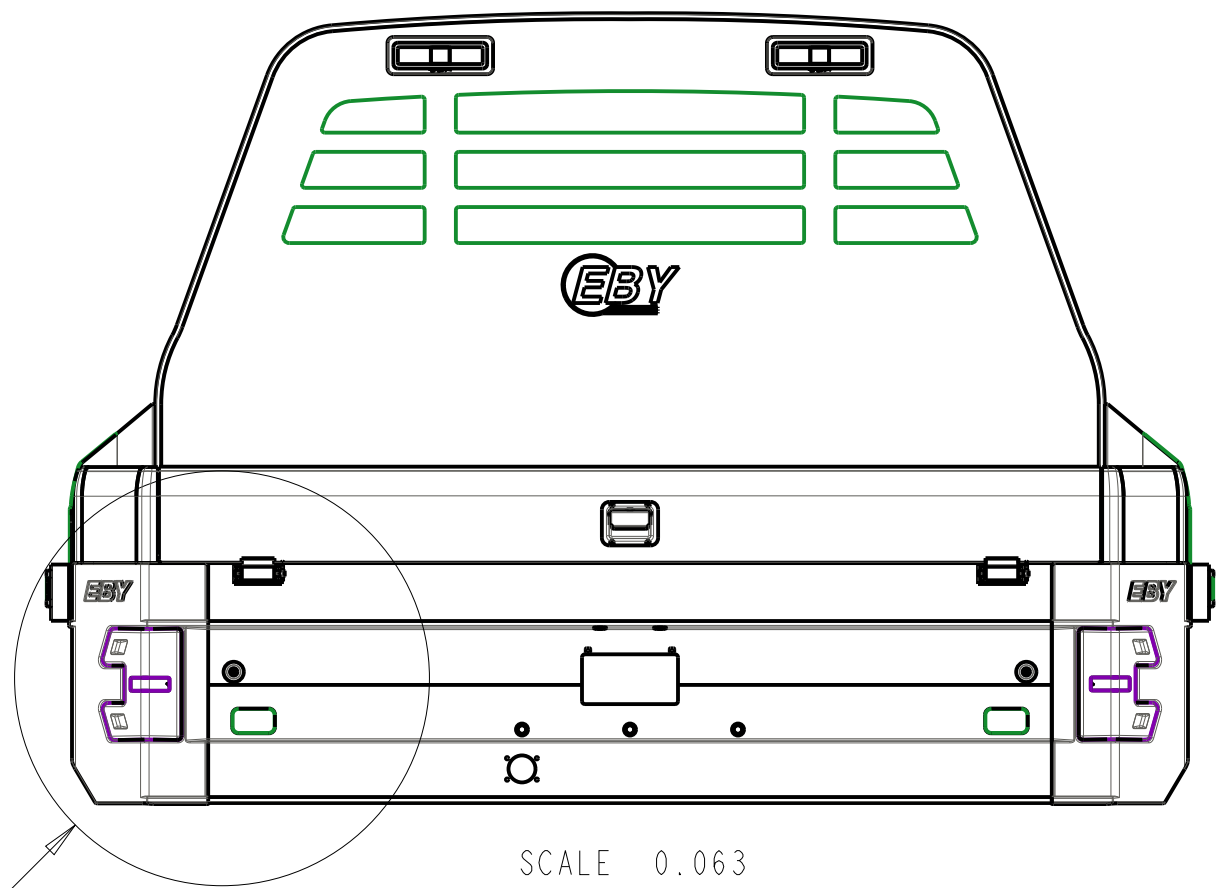
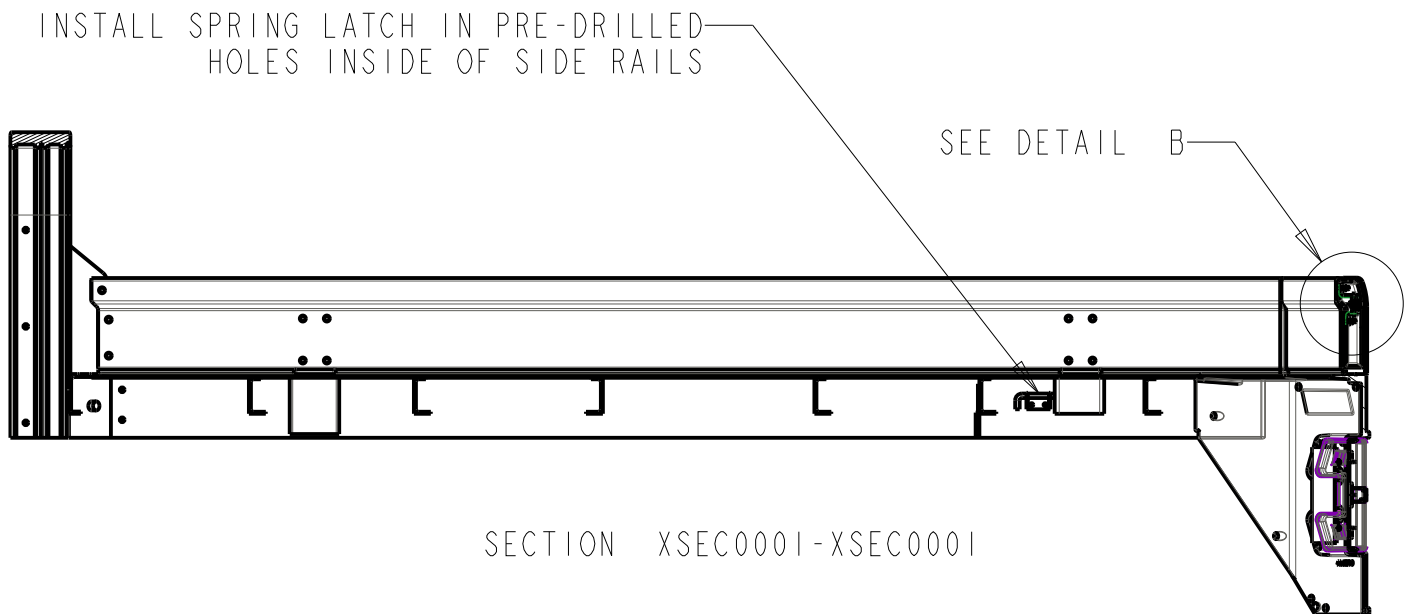
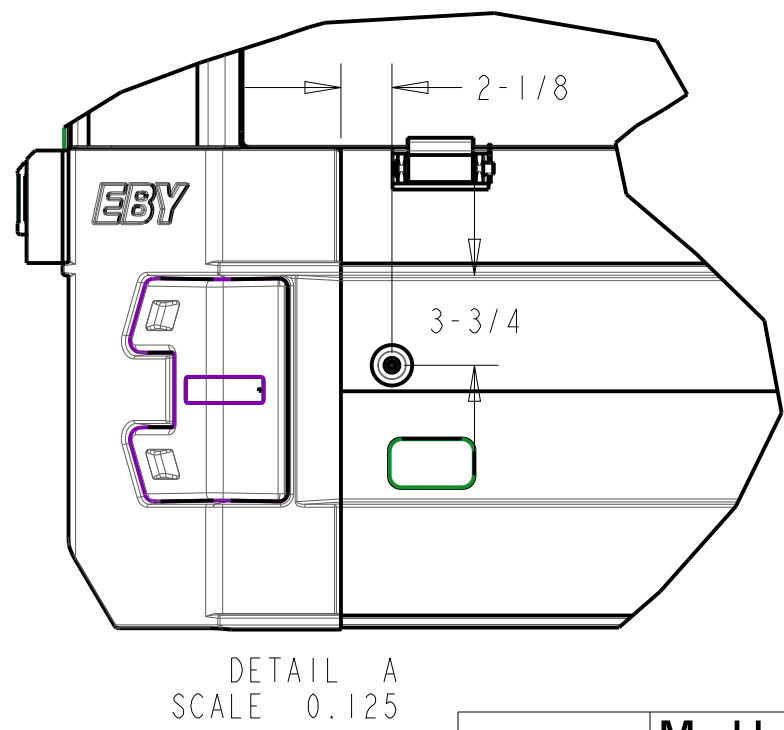


REVISIONS			
REV	DESCRIPTION	DATE	CHANGE #
1			



- NOTES FOR INSTALLING SIDEKIT:
- IF SIDE-KITS DO NOT FIT INTO POCKETS IN THE SIDERAIL, THE POCKETS MAY HAVE TO BE REAMED OUT
 - DIMENSIONS FOR TAILGATE HINGE AND BUMPER ARE FROM THE CENTER OF WELD
 - DRILL TEMPLATE FOR TAILGATE HINGE IS FLUSH WITH TOP OF FLATBED REAR RAIL
 - IF TAILGATE DOES NOT LATCH AS DESIRED, STRIKER PLATE MAY NEED SPACED OUT, USE INCLUDED 1/4" WASHERS



BIG COUNTRY FLATBED

PRINT PREPARED BY BLH

		M. H. EBY, INC.		1194 MAIN ST. BLUE BALL, PA
BIG COUNTRY SIDE-KIT INSTALL				
PRINT	-----	JOB/N	-----	
DATE	02/05/19	P/N	31B00286	DESIGN BLH
		SHEET	1	OF 1