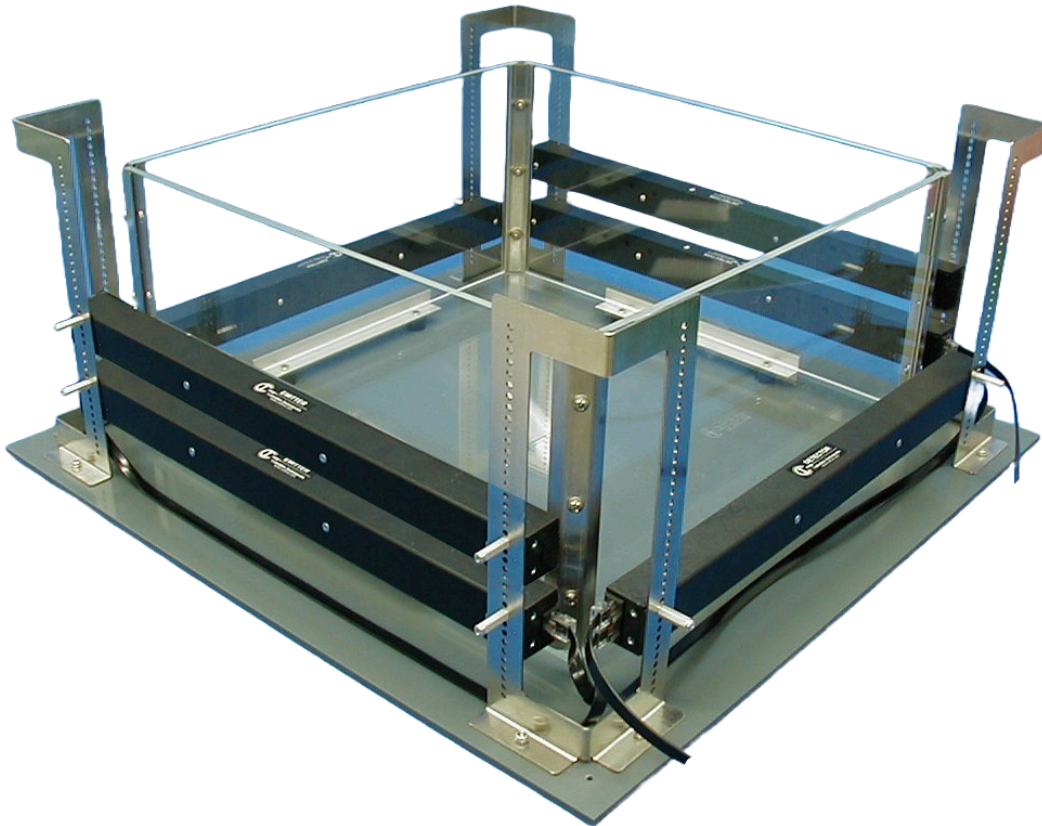


# Opto-Varimex-5

## Open Field Activity Monitor



## Anxiety and Exploratory Testing in Rats and Mice

The Opto-Varimex-5 provides automated monitoring of up to 8 animals. Operating through infrared photocell-based arenas, it allows for advanced behavioral analysis in three dimensions. Special cage inserts allow for flexible testing environments.



# Opto-Varimex-5

## Open Field Activity Monitor

**Flexible Monitoring Environment** Provide a flexible environment suited to the Open Field as well as home cage monitoring. Special cage inserts allow for a variety of testing options.

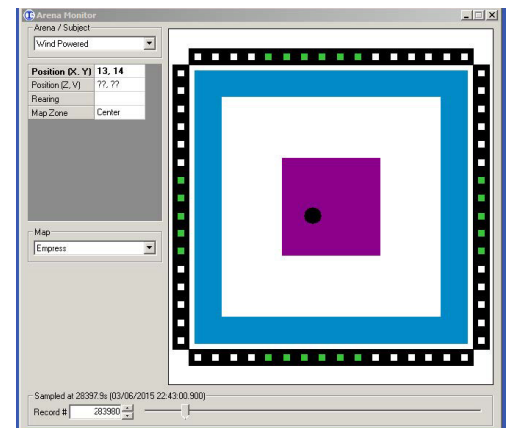
**Customizable Sensor Configurations** Incorporate diverse sensors with variable planes of measurement for multiple bespoke tests (see below).

**Accurate Tracking** Detect beam breaks in the X and Y axes to monitor precise animal location. Optional Z-axis motion recording with horizontal data allows in-depth analysis, revealing subtle behavioral differences in experiments and animals.

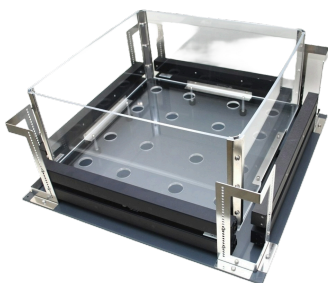
**Adaptable Experiment Templates** Pre-program templates that are included in the software, accommodating customized protocols and zone maps.

**Comprehensive Data Parameters** Define parameters related to each zone, including latency, entries as well as ambulatory, resting, distance traveled, average speed, and rearing.

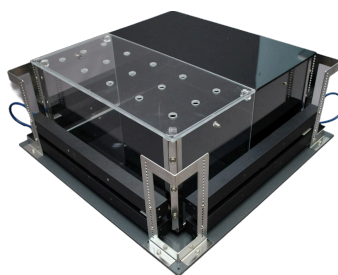
**Effortless Data Transfer** Store data in a GLP compliant non-editable file that can be exported to CSV format for later statistical analysis. RAW data can also be reanalyzed with different parameters or zone mapping.



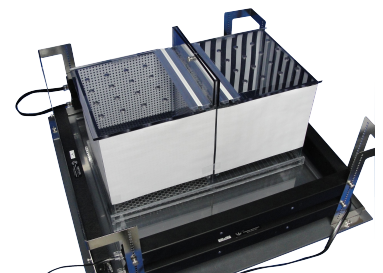
## Product Features



The Hole-Poke Kit includes a custom cage floor with a 4x4 hole array (hole size varies by species) and extra sensors for XY coordinates during nose pokes. Collected data includes metrics, nose poke count, and hole time.



The Light/Dark Box includes a two-compartment insert allowing subjects to move freely between either side. The dark side uses special infrared-transparent plastic, blocking visible light while allowing photocells to function.



The Contextual Place Preference cage insert allows easy customization. It's made of clear polycarbonate plastic, allowing users to attach patterns inward. It offers three floor options: metal bars, perforated metal, and smooth transparent plastic.