

E2E Networks

**Cost-Effective Services for Building,  
Training and Deploying Machine &  
Deep Learning Models with Ease.**

# ABOUT US



**INDIA'S  
LARGEST  
NSE LISTED  
CLOUD  
PROVIDER**

---



# ABOUT US

**10,000+**  
Trusted Customers

**2000+**  
Active Customers

## Presence in

- Delhi NCR • Bangalore
- Hyderabad • Mumbai • Vellore

First to bring  
contract-less cloud  
computing to Indian  
startups and SMEs

# E2E NETWORKS - FEATURES

## RESERVED IP

A static Public IP address is allocated specifically to your server and will be available for you unless you release the server. Manage your IP addresses with the MyAccount portal of E2E Cloud. Pay a nominal fixed monthly fee in return.

## E2E API

E2E API lets you programmatically manage nodes and resources (which you traditionally manage via the MyAccount portal) on E2E Cloud using conventional HTTP requests. E2E API endpoints are highly responsive, seamlessly performing actions and fetching information.

## E2E AUTO SCALING

The E2E Auto Scaling feature allows you to dynamically scale up or scale back your applications depending upon the situation. It's easy Setup, seamless accessibility and cost-effective features handle your workload effectively.

# E2E NETWORKS - FEATURES

## DBaaS

E2E DBaaS is easy to set up and operate in the cloud, provided with Cost-efficient service and automating time-consuming administrator tasks such as Provisioning, Patching, and Setups.

## E2E Block Storage

E2E Block Storage Provides block-level storage volumes to use with the compute nodes. Using the Myaccount Portal, You can create block storage and attach it to any of the supported nodes.

## E2E Object Storage

E2E Object Store (EOS) is a simple, cost-effective and S3-compatible storage service that enables you to store, backup and archive large amounts of content for your web apps or data for AI/ML pipelines.

# E2E NETWORKS - FEATURES

## VPC

Virtual private cloud enables you to launch resources into a virtual network that you have defined and ensures secure traffic between any resources like nodes, Kubernetes clusters and load balancers

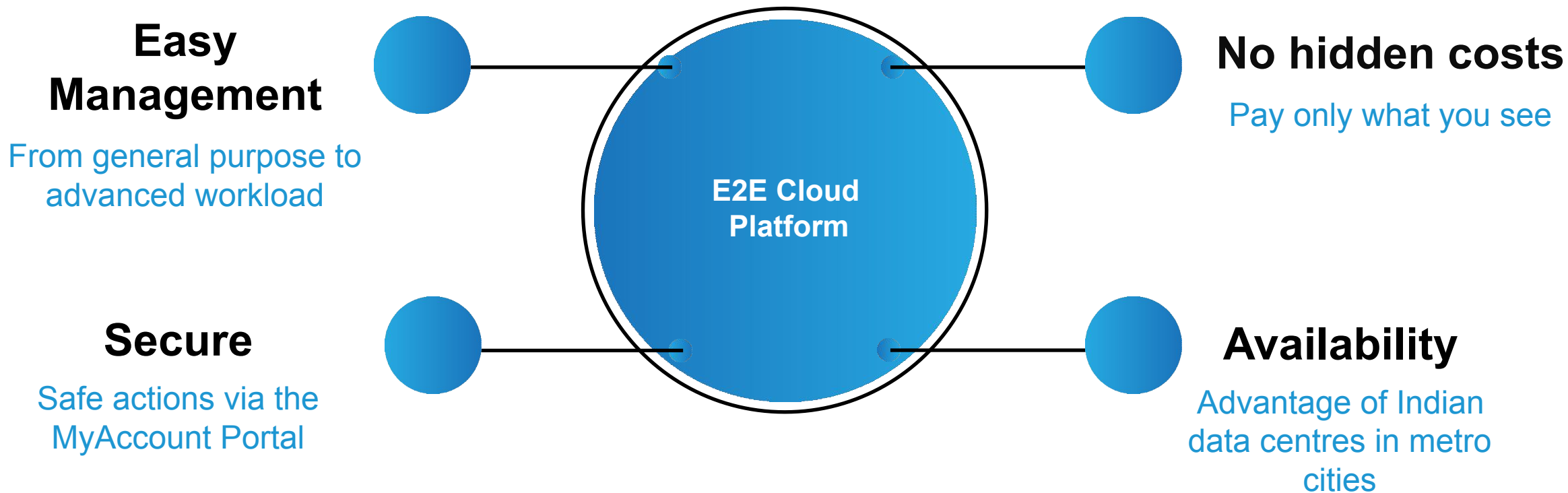
## Load Balancer Appliances

Leave the hassle of maintaining your load balancers and focus more on your applications and customers with fully managed load balancer appliances

## E2E Saved Images

E2E allows you to save images of your node, when not in use. You can create node from your saved images any time in future. You can manage the saved images with the MyAccount portal of E2E Cloud.

# E2E'S BENEFITS



# E2E'S CLOUD PLATFORM



## High-Performance Computing SSD Series

### CPU Intensive Cloud C2 Series

Latest generation Intel processors manage your data-rich workload with C2's high IOPS and memory application.

Plans from 4 vCPUs to 60 vCPUs

### C2 Series with Red Hat

#1 commercial Linux distribution in public cloud environments

35% of lower infrastructure costs

Plans from 4 vCPUs to 60 vCPUs

## 2nd Gen Memory Intensive Computing – SSD Series

### High Memory Series

Offering double the amount of vCPUs and triple the amount of RAM at the same price compared to the first generation.

Plans from 30 GB to 240 GB RAM



# E2E'S CLOUD PLATFORM

## Windows Computing

### Windows Cloud

Affordable, Scalable, Reliable  
and Secure Cloud for  
Windows Server

Editions: 2019, 2016 & 2012 R2  
(Standard).

Plans from 1 CPU - 32 CPU



### SQL Edition

MS-SQL Web Edition

Plans from 2 CPU (20 GB RAM)- 16 CPU  
(160GB RAM)

MS-SQL Standard Edition

Plans from 2 CPU (20 GB RAM)- 20 CPU (240  
GB RAM)



# E2E NETWORKS – CLOUD PLATFORM

## GPU CLOUD

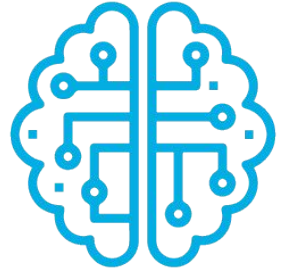
---

Plans starting at INR 30 / hour



- Unbeatable performance
- Powered with NVIDIA T4, Tesla V100, A100 and RTX 8000 GPUs
- Unmatched price-to-performance ratio
- Zero lock-in, pay hourly
- Low Latency due to Indian DC locations

# E2E NETWORKS – CLOUD PLATFORM



## GPU Cloud Multiple Uses

- AI/ML/DL- Solve complex models at high speed to improve predictions and decisions of your algorithms.
- Computer Vision - Video analysis, facial recognition, medical imaging.
- Computational Finance- Analyze and calculate large and complex financial data.
- Scientific Research- Eg. Molecular modeling, fluid dynamics etc.
- Big Data- Deal with voluminous data sets at a quicker rate.

# GPU CLIENTS



# E2E NETWORKS – OFFERINGS



Smart dedicated Compute

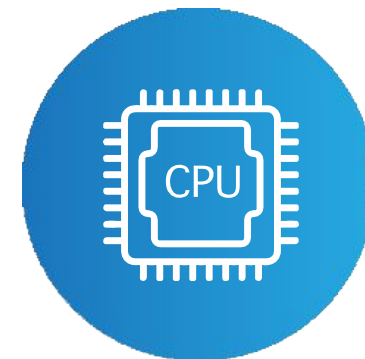
**Starting at INR 8.5 / hour**

**Plans from SDC-8.45GB, 8 vCPU - SDC-64.360GB, 64 vCPU**

## SMART DEDICATED COMPUTES ON E2E CLOUD

- Dedicated CPU Cores
- Quick Deployment
- No Hidden Contracts
- Indian Data centres
- Easy Scaling
- Low Cost
- Choice of Billing- Monthly/ Hourly
- Low Latency

# **E2E NETWORKS – OFFERINGS**



**cPanel & WHM Integrated Cloud Servers**

**Starting at INR 3.98 / hour**

**Plans from 4 vCPUs - 32 vCPUs**

**cPanel Cloud Servers On E2E Cloud- a web-based server control panel that simplifies the server resources and website management tasks.**

- ❑ Manage security with Imunify360
- ❑ One-click enables data protection backups and restore
- ❑ Take machine images and can create replicas
- ❑ Easy compliance with data localization regulations
- ❑ Pre-installed PHP modules
- ❑ 3 GHz and higher frequency
- ❑ Optimized costs
- ❑ Deploy additional IP addresses at an additional cost

# E2E NETWORKS – OFFERINGS



## CLOUD LOAD BALANCERS

Starting at INR 1 /  
hour

Plans from 3GB- 48 GB

- Be prepared for heavy traffic
- Secure traffic with SSL certificates
- Make easy changes to backend infrastructure
- HTTP Health checks
- A fully-managed service from E2E Networks

# E2E OBJECT STORAGE

**EOS is an SSD-based S3-compatible object storage service that is used to store static assets like Images, Backups, and Video Files.**

- ❑ S3-compatible REST API
- ❑ 70% cheaper than other cloud storage
- ❑ Data protection guaranteed despite hardware failure
- ❑ Zero hidden charges.



**Plans available from 0GB-250GB, beyond 250 GB at the cost of INR 3 / GB.**



# **E2E NETWORKS – OFFERINGS**

## **E2E CDN SERVICES**

**A global content delivery network that distributes content and web pages to end-users with minimal latency and offers enhanced experiences to your customers.**

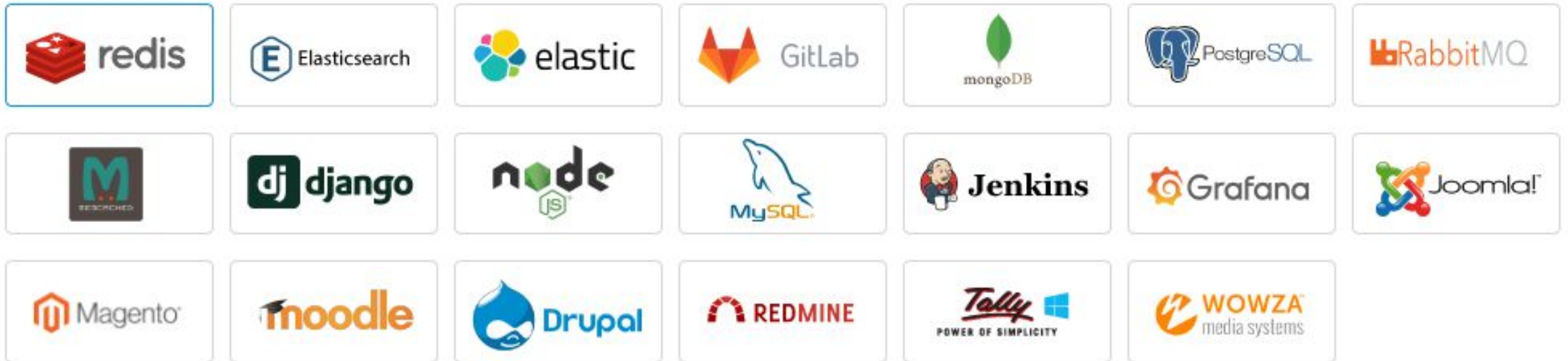
**Plans available from 0GB-250GB, beyond 250 GB at the cost of INR 3/ GB.**

- ☐ Affordable plans & pricing**
- ☐ Easy Setup via the MyAccount portal**
- ☐ Monitor consumption trends of your content.**
- ☐ Reduces latency in delivering content**
- ☐ Reduces impact of back-end failures**
- ☐ Manages traffic seamlessly**

# E2E NETWORKS – OFFERINGS

## Deploy Applications In One-Click

- One-click deployment that can be used to deploy services while launching a server itself, offering you a host of pre-installed services.
- The services vary from Application services to Database services and from CI/CD pipeline to Monitoring tools/ services.
- Currently supporting the below mentioned one-click deployments which can be launched with our C series



# **E2E NETWORKS – OFFERINGS**

## **E2E CDP BACKUP**

**CDP Backup uses Continuous Data Protection technology with R1Soft to backup your cloud instance or VM data without any manual help.**

- ❑ Directly backups the block-level data
- ❑ Low impact on disk and network I/O
- ❑ Quick recovery
- ❑ Ideal for data archival requirements.



**Plans are available from 0GB-1000GB and beyond.**

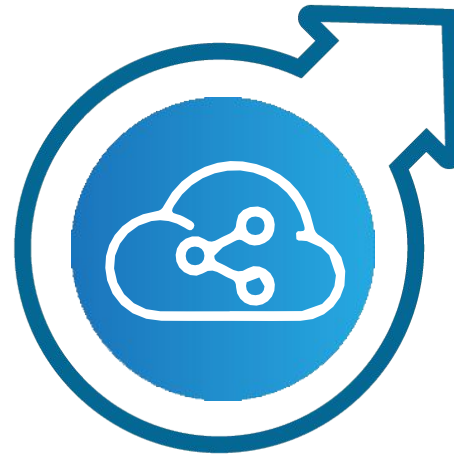
# E2E NETWORKS

## ADVANTAGES FOR YOUR BUSINESS

Moving to the Cloud benefits companies across industries:



**Business Agility –**  
Reduced operational costs



**Wide Variety-**  
Choose your required cloud  
server



**Data centralization-**  
A centralized cloud allows easy  
access to business-critical  
applications and data to  
different projects

# E2E NETWORKS

## ADVANTAGES FOR YOUR BUSINESS



Reduced IT maintenance  
cost



DDos Protection at Network  
Level



Freedom of Scalability



Unmetered Bandwidth

# E2E - PEER COMPARISON

	E2E Networks	AWS	DO	GCP	RACKSPACE	AZURE	ALIBABA
Plan Type	C2.20 GB	C4.2xlarge	Optimized Droplet	n1-standard-8	Compute 1-15	F8	Ecs.sn2ne. 2xlarge
vCPU's	8	8	8	8	8	8	8
RAM	20 GB	15 GB	16 GB	30	15 GB	15 GiB	32 GiB
Storage	300 GB SSD	450 GB SSD	100GB SSD	1x375GiB	₹ 14.93 /GB/Month	128 GiB Temporary Storage	Extra Storage costs
Price / month*	₹ 3,431	₹ 25,404	₹ 12,964.8	₹ 19,418.64	₹ 10,877	₹ 19,058	₹ 13,505
Price / hour*	₹ 4.7	₹ 34.8	₹ 17.76	₹ 26.601	₹ 14.9	₹ 26.11	₹ 18.5



# A100 Comparison



Oracle

GCP

Plan Name

GDC.A100-16.115GB

VM.GPU4.1

e2-highmem-16

VCPU

16

14

16

RAM

115GB

224GB

128GB

GPU Memory

40GB

40GB

40GB

Storage

1500GB  
SSD

Extra  
Charges

1500  
GB

Price/Month

₹ 75,000.00/-  
month

₹ 1,66,987.5/-  
month

₹ 2,02,262/-  
month

Price/Hour

₹ 170/-

₹ 228.75/-

₹ 277/-

Cost Escalation

---

122.65%

1.69%

# GPU Server Comparison



AWS

GCP



AWS

GCP

Plan Name

GPU.T4

g4dn.4xLarge

n1-custom-12-61440

GPU.V100

P3.2xLarge

n1-custom-12-65536

VCPU

12

16

12

8

8

12

RAM

55GB

64GB

64GB

120GB

61GB

64GB

GPU Memory

16GB

16GB

16GB

32GB

16GB

16GB

SSD

900GB  
SSD

225GB  
SSD

1125GB  
SSD

900GB  
SSD

900GB  
SSD

1125GB  
SSD

Cost

₹ 17,500.00/-  
month

₹ 71,670.72/-  
month

₹ 65,585.81/-  
month

₹ 50,000.00/-  
month

₹ 1,72,192.08/-  
month

₹ 1,27,708.41/-  
month

Cost Escalation

---

309%

274%

---

244%

155%



# CLIENTS

E - Commerce



Financial Technology



Education/Jobs



Big Data/ IOT




Travel






## REACH OUT TO US TODAY

 [sales@e2enetworks.com](mailto:sales@e2enetworks.com)

 +91-11-4084-4965

 [Cloud-platform@e2enetworks.com](mailto:Cloud-platform@e2enetworks.com)

 +91-11-4117-1818

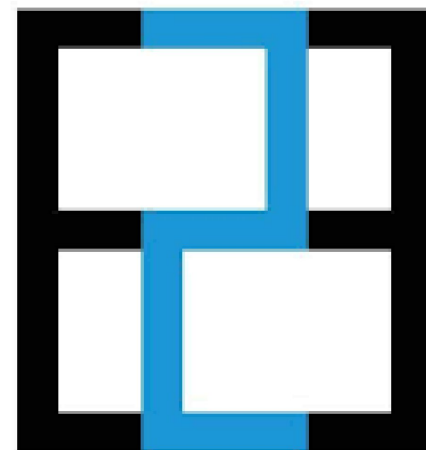
## REGISTERED ADDRESS

Awfis, First Floor, A-24/9,  
Mohan Cooperative Industrial Estate,  
Mathura Road, Saidabad,  
New Delhi-110044

 @e2enetworks

 @e2enetworks

 [linkedin.com/company/e2e-networks-ltd](https://www.linkedin.com/company/e2e-networks-ltd)



E2E Networks