



2023
CATALOG

PERRY EQUIPMENT

FEED • SEED • GRAIN • FERTILIZER

Your Local Source
for Grain Handling
Equipment
www.perry-equip.com



P: (765) 362-4495 F: (765) 364-9655 | 115 West 580 North | Crawfordsville, IN 47933



WELCOME to Perry Equipment!

Founded in 1982 by Randy Perry, and now owned by Tom and Justin McClamroch, our philosophy is to **carry high quality products** and **deliver excellent customer service**. Our goal is 100% satisfaction, 100% of the time.



We provide high quality, custom products to our friends in the Agriculture and Industrial industries. We specialize in bulk handling equipment to feed, grain, seed, and industrial industries and carry one of the largest inventories in our market where the majority of our products are stored inside. We also provide repairs and make custom augers for a wide variety of agricultural needs.

Whether you're conveying, loading, repairing, and more, think of Perry Equipment for all your bulk material needs.

We are located in the heart of Ag country in West Central Indiana, 3 miles North of Interstate 74 off Highway 231. Come see us, visit us on Facebook or Instagram or Tweet us today! We'd love to hear from you.

TOM McCLAMROCH

OWNER/MEMBER

Tom McClamroch, a native of Crawfordsville, Indiana has been involved in agriculture his whole life. Prior to earning an Agri-Business Management Bachelor's Degree from Illinois State University in 2010, Tom found his passion for agriculture while growing up on his family farm. Tom has a passion for serving local 4-H and FFA clubs and has proven leadership in both organizations as an advisor. Tom is married to Jessica and has two sons, Easton and Jude.

JUSTIN McCLAMROCH

OWNER/MEMBER

Justin McClamroch, a lifelong resident of Crawfordsville, Indiana has been involved with the agricultural field his entire life. When able, Justin helps at the family farm, performing various acts such as fabricating, fixing and running farm equipment, as well as managing the grain operating systems. He has a passion for family and farming and enjoys spending time with his wife Megan and two kids, Owen and Evelyn.

Hours: Monday-Friday 8am-5pm EST. Available Saturdays!

www.perry-equip.com



TABLE OF CONTENTS

Terms of Sale	2
Auger Repair Flighting	3/4
Mounted Augers.....	5
Auger Shafts and Coupling Bolts	6
Tube Augers and Hutchinson Components	7
Drive and Motor Sheaves and Bearings	9
Electric Motors	10
Falk Screw Drives and Components	11
Screw Conveyor Complete Units	12/13
Screw Conveyor Drives and HP	14/15
Screw Conveyor Components	16-20
U-Trough Liners	21
Spouting	22
Flanges – Round and Square	23
Clamp Bands and Adjustable Elbows	24
Valves – Square	25
Transitions and Flat Top Adapters	26
Half Bands, Fixed Cushion Box, and Tube Joiners	27
Cushion Boxes and Flow Retarders	28
Truss Kits	29
Welding Sleeve & Slide Gates.....	30
Rack & Pinion Gates	31
Bucket Elevator Bolts and Lagging	32
Polyethylene Elevator Buckets	33/34
Urethane and UHMW Sheets	35
Belting and UHMW Flights.....	36
Grain Distributors	37
Seed and Chemical Handling Equipment	38
Belt Conveyors and Augers	39
Towers, Catwalks, Drag Conveyors	40
Level Indicators	41
Grain Drying and Aeration	42
TrapAdapt & DriveMaxx	43
Sump Guards & Grain Bin Sweeps	44
Secure Gates	45
Super Structures and Speedy Pit	46
Bucket Elevators	47
Grain Cleaners/Dust Collectors	48
4B Components	49
Greene Galvanized Stairs	50
Product Specifications	51/52
Pulleys and Components	53

TERMS OF SALE

PRICES AND TERMS:

All prices are subject to change without notice. Prices in affect at time of shipment will apply to customers with established credit. All other shipments will be on a C.O.D. basis. A service charge of 1.5% per month will apply to all invoices past due. A service charge of 3.0% will be added to all credit card orders.

WARRANTY:

McCLAMROCH AG dba PERRY EQUIPMENT guarantees all equipment to be of good workmanship and to function as intended as long as the equipment is assembled and operated according to instructions. McCLAMROCH AG dba PERRY EQUIPMENT will repair or replace, at their option, free of charge to the customer, any part which proved to be defective in materials or workmanship, according to the manufacturer's warranty -- providing the part is returned to our warehouse for inspection. McCLAMROCH AG dba PERRY EQUIPMENT shall be responsible for no more than the cost of the defective part. Any damage to equipment resulting from misuse, abuse, neglect, accident, improper installation or alterations shall render warranty void and of no effect.

RETURN OF MERCHANDISE:

Merchandise may not be returned without written or telephone approval from McCLAMROCH AG dba PERRY EQUIPMENT. A 20% restocking charge will apply to all merchandise unless otherwise authorized by McCLAMROCH AG dba PERRY EQUIPMENT. Returned merchandise must be shipped prepaid. Custom built and specialty equipment, i.e., stainless, may not be returned for credit.

FREIGHT:

Additional charges will apply for special handling, packaging, or unusual service. We will not be responsible for any damaged equipment that is shipped by commercial freight.

DELIVERY:

Perry Equipment is now offering in-house delivery for all components including spouting! Please call Tom for delivery rate

**NEW**

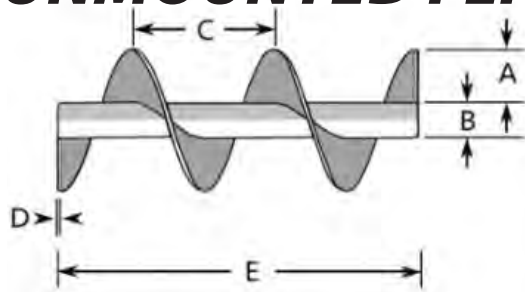
CENTER CORE TUBING FOR AUGER FLIGHTING



PART NUMBER	OUTSIDE DIAMETER	ID	COUPLER SHAFT SIZE	WT. LB./FT.	PRICE/FOOT
CCT1	1"	13/16"	13/16"	.82	
CCT114	1-1/4"	1"	1"	1.45	
CCT112	1-1/2"	1-1/4"	1-1/4"	1.77	
CCT158	1-5/8"	1-3/8"	1" (w/ bushing)	1.93	
CCT178	1-7/8"	1-5/8"	1", 1-1/4" or 1-1/2" (w/ bushing)	2.14	
CCT238	2-3/8"	2-1/20"	1-1/4" or 1-1/2" (w/ bushing)	2.89	
CCT278	2-7/8"	2-1/2"	2" (w/ bushing)	5.79	
CCT312	3-1/2"	3"	2-7/16" (w/ bushing)	7.58	

AUGER REPAIR FLIGHTING

UNMOUNTED FLIGHTING



A - Strip width
B - OD of Shaft
C - Pitch
D - Material thickness
E - Overall length

$(Ax2) + B = OD \text{ of Flight}$

DIRECTION OF FLIGHTING



LEFT HAND



RIGHT HAND

PART NUMBER	OUTSIDE DIAMETER	PITCH	GAUGE	WEIGHT PER 10'	CENTER SHAFT SIZE	HAND	PRICE/FOOT
31-10	3-1/4	3-1/4	10	7	1	RH	
3114-7	3-1/4	3-1/4	7	10	1-1/4	RH	
41-10	4	4	10	9	1	RH	
4158-7	4	4	7	12	1-5/8	RH	
51-7	5	5	7	12	1	RH	
5112-7	5	5	7	16	1-1/2	RH	
5114-10	5	5	10	11	1-1/4	RH	
5114-7	5	5	7	15	1-1/4	RH	
51516-7	5	5	7	15	1-5/16	RH/LH	
551515-7	5-1/2	5-1/2	7	18	1-5/16	RH	
55158-7	5-1/2	5-1/2	7	19	1-5/8	RH	
55178-7	5-1/2	5-1/2	7	18	1-7/8	RH	
61-7	6	6	7	22	1	RH	
61516-7	6	6	7	22	1-5/16	RH	
6238-14	6	6	1/4	30	2-3/8	RH/LH	
71516-7	7	7	7	27	1-5/16	RH	
7112-7	7	7	7	27	1-1/2	RH	
7158-7	7	7	7	27	1-5/8	RH	
7178-7	7	7	7	27	1-7/8	RH	
7178-14	7	7	1/4	36	1-7/8	RH	
7214-7	7	7	7	27	2-1/4	RH	
7238-14	7	7	1/4	36	2-3/8	RH	
81516-7	8	8	7	30	1-5/16	RH	
8178-14	8	8	1/4	40	1-7/8	RH	
9158-7	9	9	7	34	1-5/8	RH	
9178-7	9	9	7	34	1-7/8	RH	
92-7	9	9	7	34	2	RH	
9238-7	9	9	7	34	2-3/8	RH	
9238-7SS	9	9	7	34	2-3/8	RH	
9238-14	9	9	1/4	46	2-3/8	RH/LH	
9278-14	9	9	1/4	46	2-7/8	RH	

- Flighting stocked in 10' lengths
- Minimum order is 5' of any size
- All flighting is made of carbon steel
- All flighting is Super Edge
- 5' lengths can be shipped UPS ground
- Packaging charge of \$5.00 per package applies to all UPS ground shipments

AUGER REPAIR FLIGHTING

UNMOUNTED FLIGHTING CONTINUED ▶

PART NUMBER	OUTSIDE DIAMETER	PITCH	GAUGE	WEIGHT PER 10'	CENTER SHAFT SIZE	HAND	STANDARD PRICE/FOOT
10238-14	10	10	1/4	56	2-3/8	RH/LH	
11278-14	11	11	1/4	56	2-7/8	RH/LH	
11278-516	11	11	5/16	65	2-7/8	RH	
113-14	11	11	1/4	56	3	RH	
12238-14	12	12	1/4	60	2-3/8	RH	
12278-14	12	12	1/4	60	2-7/8	LH	
12278-516	12	12	5/16	70	2-7/8	RH	
123-14	12	12	1/4	73	3	RH	
12513278-5	12-1/2	13	5/16	70	2-7/8	RH	
1251335-5	12-1/2	13	5/16	70	3-1/2	RH	
128278-14	12	8	1/4	73	2-7/8	RH/LH	
1283-14	12	8	1/4	74	3	RH	
13278-14	13	13	1/4	76	2-7/8	RH	
14312-14	14	14	1/4	70	3-1/2	RH	

STIR-ATOR DOWN AUGER FLIGHTING: 2" OD, 1" ID, 1/4" Thick - \$9.00/ft. Available in 4' lengths only.

- Call for availability and price for sizes not listed
- 10ga and short pitch flighting is not available in Super Edge
- SS = Stainless Steel

SECTIONAL AND BAR WRAP FLIGHTING

SECTIONAL FLIGHTING: 5" OD through 36" OD sizes

- Thickness available: 3/16, 1/4, 5/16, 3/8, 1/2, 1"
- Available in mild steel, stainless steel, AR (abrasion resistant)
- Lead time: 5-7 days

BAR WRAP: 1.5" OD through 14" OD sizes

- Thickness available: 10ga - 1/2 depending on the size of OD
- Available in mild steel, stainless steel, AR (abrasion resistant)



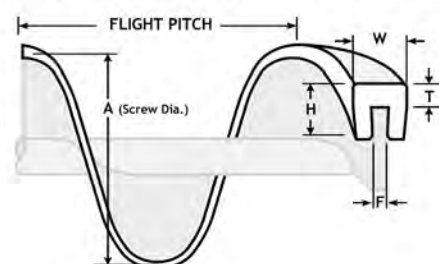
BRUSH FLIGHTING & SNAP-ON UHMW EDGING

- Multiple sizes available
- Fabricated on-site



To determine approximate amount of edging required in feet when:

- Full Pitch = length of conveyor section in feet x 3.4
- Half Pitch = length of conveyor section in feet x 6.7
- Irregular Pitch = no. of pitches x Dia. (in inches) x .262



MOUNTED FLIGHTING



PART NUMBER	SIZE	DESCRIPTION	WT LB./FT.	PRICE/FOOT
MF4S1	4"	3.25" Std. Duty 10ga Flighting, mtd. on 1" OD x 13/16" ID Tubing	1.48	
MF4H114	4"	3.25" Hvy. Duty 7ga Flighting, mtd. on 1-1/4" OD x 1" ID Tubing	2.37	
MF6H1	6"	5" Hvy. Duty Super Edge 7ga Flighting, mtd. on 1" OD x 13/16" ID Tubing	1.90	
MF6S114	6"	5" Std. Duty 10ga Flighting, mtd. on 1-1/4" OD x 1" ID Tubing	2.55	
MF6H114	6"	5" Hvy. Duty Super Edge 7ga Flighting, mtd. on 1-1/4" OD x 1" ID Tubing	3.00	
MF6H112	6"	5" Hvy. Duty Super Edge 7ga Flighting, mtd. on 1-1/2" OD x 1-1/4" ID Tubing	3.32	
MF8H112	8"	7" Hvy. Duty Super Edge 7ga Flighting, mtd. on 1-1/2" OD x 1-1/4" ID Tubing	4.41	
MF8H178	8"	7" Hvy. Duty Super Edge 7ga Flighting, mtd. on 1-7/8" OD Tube Bushed to 1-1/4" ID	4.81	
MF8HH178	8"	7" Hvy. Duty Super Edge 1/4" Flighting, mtd. on 1-7/8" OD Tube Bushed to 1-1/4" ID	5.71	
MF8HH238	8"	7" Hvy. Duty Super Edge 1/4" Flighting, mtd. on 2-3/8" OD Tube Bushed to 1-1/4" ID	6.49	
MF10S238	10"	9" Std. Duty Super Edge 7ga Flighting, mtd. on 2-3/8" OD Tube Bushed to 1-1/2" ID	6.32	
MF10H238	10"	9" Hvy. Duty Super Edge 1/4" Flighting, mtd. on 2-3/8" OD Tube Bushed to 1-1/2" ID	7.47	
MF12H278	12"	11" Hvy. Duty Super Edge 1/4" Flighting, mtd. on 2-7/8" OD Tube Bushed to 2" ID	11.39	
MF12HH278	12"	11" Hvy. Duty Super Edge 5/16" Flighting, mtd. on 2-7/8" OD Tube Bushed to 2" ID	12.80	
MF14HH278	14"	12-1/2" x 13" Pitch Hvy. Duty Super Edge 5/16" Flighting, mtd. on 2-7/8" OD Tube Bushed to 2" ID	14.19	
MF14HH312	14"	12-1/2" x 13" Pitch Hvy. Duty Super Edge 5/16" Flighting, mtd. on 3-1/2" OD Tube Bushed to 2-7/16" ID	19.00	

- 20' Lengths
- Drilled both ends
- Call for prices on any sizes not listed
- Additional discounts available on volume orders
- Custom orders welcome

** Non-stock item - please call for availability



REPLACEMENT AUGERS

AVAILABLE FOR:

Grain Dryers • Bin Sweeps • Bin Unload Augers
Roof and Cross Augers • Transport Augers

AUGER SHAFTS AND COUPLING BOLTS

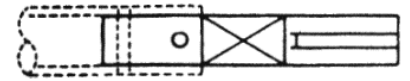
AUGER SHAFTS

PART NUMBER	SIZE	TYPE	WEIGHT LB.	PRICE
DS1	1 x 9-1/2"	Drive	2.0	
DS114	1-1/4 x 12"	Drive	4.0	
152-0568	1-1/2 x 11-1/2"	Drive	5.5	
152-0915	2 x 13-1/8"	Drive	11.7	
CCS1316	13/16 x 5-1/2"	Close Coupler	.80	
CCS1	1 x 9-1/2"	Close Coupler	2.0	
CCS114	1-1/4 x 9-1/2"	Close Coupler	3.0	
147-2208	1-1/2 x 9-1/2"	Close Coupler	4.3	
147-2315	2 x 9-1/2"	Close Coupler	9.0	
CS1	1 x 11-1/2"	Standard Coupler	2.4	
CS114	1-1/4 x 11-1/2"	Standard Coupler	4.0	
147-0335	1-1/2 x 11-1/2"	Standard Coupler	5.4	
147-0442	2 x 11-1/2"	Standard Coupler	9.6	
ES1	1 x 7"	End	1.5	
ES114	1-1/4 x 7"	End	2.4	
150-0560	1-1/2 x 8-1/4"	End	4.0	
150-1055	2 x 8-5/8"	End	7.6	

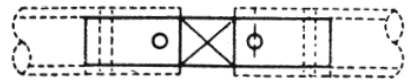
Close Coupling



Drive



Coupling



End



WELD-IN BUSHINGS FOR CENTER CORE TUBE MUST BE FIELD DRILLED

PART NUMBER	SIZE (OD – ID)	FITS TUBE SIZE	PRICE
B138-1	1-3/8" – 1"	1-5/8"	
B158-1	1-5/8" – 1"	1-7/8"	
B158-114	1-5/8" – 1-1/4"	1-7/8"	
B158-112	1-5/8" – 1-1/2"	1-7/8"	
B205-114	2-1/20" – 1-1/4"	2-3/8"	
B205-112	2-1/20" – 1-1/2"	2-3/8"	
B250-2	2-1/2" – 2"	2-7/8"	



COUPLING BOLTS WITH NYLOCK NUTS

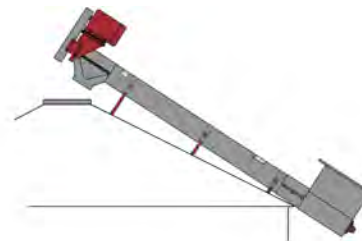
PART NUMBER	SIZE	APPLICATION	PRICE
ZB0003	3/8 x 1-3/4" HCS	6" Augers Mounted on 1-1/4" Tube	
ZB0004	3/8 x 2" HCS	6" Augers Mounted on 1-1/2" Tube	
ZB0007	7/16 x 2" HCS	8" Augers Mounted on 1-1/2" Tube	
ZB0008	7/16 x 2-1/2" HCS	8" Augers Mounted on 1-7/8" Tube	
ZB0009	7/16 x 3" HCS	8" Augers Mounted on 2-3/8" Tube	
ZB0006	3/8" Nylock Nut		
ZB0011	7/16" Nylock Nut		



TUBE AUGERS AND HUTCHINSON COMPONENTS

CUSTOM BUILT TUBE AUGERS

- 4", 6", 8", 10", 12" and 14" OD housings
- Capacities to 8,000bph
- Horizontal and inclined applications
- With and without internal bearings
- HP and drive recommendations
- Reducer and V belt drives
- Accessory equipment available



HUTCHINSON CUSTOM AUGER COMPONENTS

PART NUMBER	DESCRIPTION	PRICE
H16010AX	6" Std. Duty 2-B Drive	
H1607A	6" 90 Degree Spout	
H1610A	6" Hopper	
H1614A	6" 45 Degree Spout	
H18010AX	8" Std. Duty 2-B Drive	
H18020AX	8" Std. Duty 3-B Drive	
H1807A	8" 90 Degree Spout	
H1810A	8" Hopper	
H1814A	8" 45 Degree Spout	
H1827A	8" Inlet Hopper	
H1836A	8" 18" x 18" x 18" Hopper	

PART NUMBER	DESCRIPTION	PRICE
H1840A	8" Hopper w/ Enclosed Gate	
H2001HX	10" Hvy. Duty 3-B Drive	
H2007M	10" 90 Degree Spout	
H2010A	10" Hopper	
H2014A	10" 45 Degree Spout	
H2036A	10" 24" x 24" x 24" Hopper	
H2040A	10" Hopper w/ Enclosed Gate	
H2071AX	10" HD 3-B Drive	
H2207A	12" 90 Degree Spout	
H2271AX	12" HD 3-B Drive	
H2236A	12" 24" x 24" x 24" Hopper	

INTERNAL BEARINGS FOR TUBE AUGERS

PART NUMBER	DESCRIPTION	PRICE	HOUSING SIZE
H6303D	1" Bronze Bushing		-----
H8379C	1-1/4" Bronze Bushing		-----
H1051D	1-1/2" Bronze Bushing		-----
H1254D	2" Bronze Bushing		-----
H6314F	1" Internal Bearing		6"
H8392C	1-1/4" Internal Bearing		8"
H1055D	1-1/2" Internal Bearing		10"
H1264D	2" Internal Bearing		12"
H1475D	2" Internal Bearing, Frame Only		14"



HUTCHINSON BIN UNLOADING EQUIPMENT

PART NUMBER	DESCRIPTION	PRICE
B11791A	6" 1-B Powerhead	
B1193E	6" Center Well w/ Full Gate and Rollers	
B1219C	8" Bin Flange	
B12800A	8" 2-B Powerhead	
B1293E	8" Center Well w/ Full Gate and Rollers	
B1294E	8" Intermediate Well	
BJ1023W	10" Commercial Center Well	
BJ1024W	10" Commercial Intermediate Well	



***We stock Hutchinson kleen sweeps and parts, please call for price and availability**

TUBE AUGERS AND END PLATES

BULK TANK AUGER HOPPERS

PART NUMBER	DESCRIPTION	WEIGHT #	PRICE
DG2006	Bulk Tank Auger Hopper, 6" Adjustable 0-20 Degree, with 1" Wood Bearing	48.4	
DG2508	Bulk Tank Auger Hopper, 8" Adjustable 25-50 Degree, with 1-1/4" Wood Bearing	34.7	
DG1610	Bulk Tank Auger Transition, 16" Square to 10" Round	11.6	



- 4" to 12" Hoppers with adjustable angles from 0 to 50 degrees available – Call for pricing and availability.

ROUND TUBE DROP OUT

PART NUMBER	SIZE	PRICE
RTDO6	6"	
RTDO8	8"	
RTDO10	10"	
RTDO12	12"	
RTDO14	14"	



ROUND END PLATE – BOLTS TO ANGLE RING

PART NUMBER	SIZE	BEARING ID	WEIGHT #	PRICE
REP6	6"	1"	3.7	
REP8-114	8"	1-1/4"	5.7	
REP8-112	8"	1-1/2"	5.6	
REP-10	10"	1-1/2"	8.3	
REP-12	12"	2"	11.7	
REP14-2	14"	2"	19.5	
REP14-2716	14"	2-7/16"	19.4	



FLANGE BEARINGS

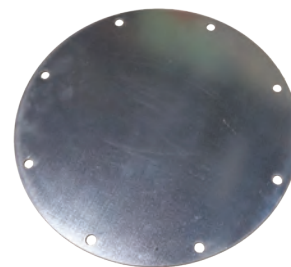
PART NUMBER	ID	DESCRIPTION	PRICE
FB1-2	1"	2-Bolt Flange	
FB1-4	1"	4-Bolt Flange	
FB114-2	1-1/4"	2-Bolt Flange	
FB114-4	1-1/4"	4-Bolt Flange	
FB112	1-1/2"	4-Bolt Flange	
FB2	2"	4-Bolt Flange	
FB2716	2-7/16"	4-Bolt Flange	
FB3	3"	4-Bolt Flange	



DRIVE AND MOTOR SHEAVES AND BEARINGS

GALVANIZED ROUND SPOUT CAPS

PART NUMBER	SIZE	PRICE
RSC6	6"	
RSC8	8"	
RSC10	10"	
RSC12	12"	



BEARING INSERTS

PART NUMBER	ID	STANDARD PRICE/EACH
BI1	1"	
BI118	1-1/8"	
BI114S Small	1-1/4"	
BI114	1-1/4"	
BI114TS Tri Seal	1-1/4"	
BI138	1-3/8"	
BI112	1-1/2"	



DRIVE AND MOTOR SHEAVES

CAST ALUMINUM AND PRESSED STEEL SHEAVES

PART NUMBER	DESCRIPTION	PRICE
H40149	12" OD x 1.00" Bore 1-Belt, Cast	
H40151	12" OD x 1.00" Bore 2-Belt, Cast	
H40152	12" OD x 1.25" Bore 2-Belt, Cast	
H40154	12" OD x 1.25" Bore 3-Belt, Cast	
H40158	15" OD x 1.25" Bore 2-Belt, Cast	
H40159	15" OD x 1.50" Bore 2-Belt, Cast	
H40161	15" OD x 1.25" Bore 3-Belt, Cast	
H40162	15" OD x 1.50" Bore 3-Belt, Cast	
H40183	10" OD x 1.00" Bore 1-Belt, Pressed	
H40184	12" OD x 1.00" Bore 1-Belt, Pressed	



MOTOR SHEAVES AND BUSHINGS

PART NUMBER	DESCRIPTION	PRICE
ZPT061	2BK28, 2.95" OD x 1-1/8" Fixed Bore	
ZPT062	2BK34H, 3.75" OD x 7/8", 1-1/8" Bore	
ZPT007	3B34SH, 3.75" OD x 1-3/8", 1-5/8" Bore	
ZPT063	3B30, 3.0" OD x 1-3/8" Fixed Bore	
ZPT064	H 7/8 Bushing	
ZPT012	H 1-1/8 Bushing	
ZPT016	SH 1-3/8 Bushing	
ZPT018	SH 1-5/8 Bushing	



WEG & BALDOR ELECTRIC MOTORS

WEG & BALDOR ELECTRIC MOTORS



FARM DUTY SINGLE PHASE TEFC 1800 RPM

PART NUMBER	HORSEPOWER	WEIGHT	FRAME SIZE	SHAFT SIZE	PRICE
EM1-1	1	36	143T	7/8	
EM1.5-1	1-1/2	52	145T	7/8	
EM2-1	2	54	145T	7/8	
EM3-1	3	80	184T	1-1/8	
EM5-1	5	157	184T	1-1/8	
EM7.5-1	7-1/2	169	215T	1-3/8	
EM10-1	10	182	215T	1-3/8	

PREMIUM EFFICIENCY THREE PHASE TEFC 1800 RPM

PART NUMBER	HORSEPOWER	WEIGHT	FRAME SIZE	SHAFT SIZE	PRICE
EM1	1	36	143T	7/8	
EM1.5	1-1/2	39	145T	7/8	
EM2	2	46	145T	7/8	
EM3	3	74	182T	1-1/8	
EM5	5	92	184T	1-1/8	
EM7.5	7-1/2	139	213T	1-3/8	
EM10	10	153	215T	1-3/8	
EM15	15	238	254T	1-5/8	
EM20	20	259	256T	1-5/8	
EM25	25	481	284T	1-7/8	
EM30	30	525	286T	1-7/8	
EM40	40	561	324T	2-1/8	
EM50	50	662	326T	2-1/8	_____**
EM60	60	1036	364T	2-3/8	_____**
EM75	75	1047	365T	2-3/8	_____**
EM100	100	1302	405T	2-7/8	_____**

FALK SCREW DRIVES AND COMPONENTS

FALK SCREW CONVEYOR DRIVES

- Perry Equipment now stocks all of the following Falk Drives and Components
- Call for pricing
- Falk Screw Conveyor Drives quoted upon request

IN STOCK

SIZE 5107

PART NUMBER	DESCRIPTION	WEIGHT #
5107J05A	Gearbox 5-1 Ratio	55
5107J09A	Gearbox 9-1 Ratio	60
5107J14A	Gearbox 14-1 Ratio	60
5107J25A	Gearbox 25-1 Ratio	60
DS5107J - 1.50	1.50" Drive Shaft	8
DS5107J - 2.00	2.00" Drive Shaft	10
DS5107J - 2.437	2-7/16" Drive Shaft	14
DS5107J - 3.00	3.00" Drive Shaft	18
SH5107J	Seal Housing	15
MM5107J - 1	Motor Mount	40

SIZE 5207

PART NUMBER	DESCRIPTION	WEIGHT #
5207J05A	Gearbox 5-1 Ratio	180
5207J09A	Gearbox 9-1 Ratio	190
5207J14A	Gearbox 14-1 Ratio	190
5207J25A	Gearbox 25-1 Ratio	190
DS5207J - 1.50	1.50" Drive Shaft	20
DS5207J - 2.00	2.00" Drive Shaft	24
DS5207J - 2.437	2-7/16" Drive Shaft	29
DS5207J - 3.00	3.00" Drive Shaft	30
DS5207J - 3.437	3-7/16" Drive Shaft	34
SH5207J	Seal Housing	25
MM5207J - 1	Motor Mount	50
MM5207J - 2	Motor Mount	100

SIZE 5115

PART NUMBER	DESCRIPTION	WEIGHT #
5115J05A	Gearbox 5-1 Ratio	85
5115J09A	Gearbox 9-1 Ratio	90
5115J14A	Gearbox 14-1 Ratio	90
5115J25A	Gearbox 25-1 Ratio	90
DS5115J - 1.50	1.50" Drive Shaft	14
DS5115J - 2.00	2.00" Drive Shaft	14
DS5115J - 2.437	2-7/16" Drive Shaft	18
DS5115J - 3.00	3.00" Drive Shaft	23
SH5115J	Seal Housing	14
MM5115J - 1	Motor Mount	42
MM5115J - 2	Motor Mount	82

SIZE 5203

PART NUMBER	DESCRIPTION	WEIGHT #
5203J05A	Gearbox 5-1 Ratio	110
5203J09A	Gearbox 9-1 Ratio	115
5203J14A	Gearbox 14-1 Ratio	115
5203J25A	Gearbox 25-1 Ratio	115
DS5203J - 1.50	1.50" Drive Shaft	16
DS5203J - 2.00	2.00" Drive Shaft	20
DS5203J - 2.437	2-7/16" Drive Shaft	21
DS5203J - 3.00	3.00" Drive Shaft	26
SH5203J	Seal Housing	15
MM5203J - 1	Motor Mount	47
MM5203J - 2	Motor Mount	90

BELT GUARDS

PART NUMBER	DESCRIPTION	WEIGHT #
BG	5107-5207 Gearboxes	40.5
BG - 1	5207 & Up Gearboxes	45.7

- Belt Guards quoted upon request



SCREW CONVEYOR COMPLETE UNITS

SCREW CONVEYOR CORP.

A wide choice of standard parts, you get the system you need to solve your problem—yet keep cost at a minimum. Select the type of components from the standard line that fit your needs. Special steels and flighting designs are available. Please call for pricing and availability.



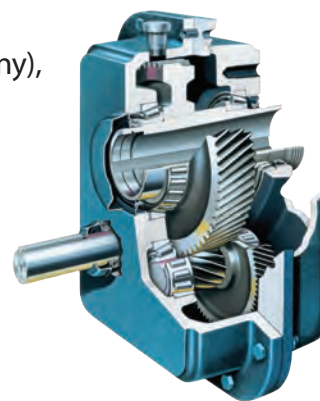
- A CONVEYOR SCREW:** Compact, manufactured straight and accurate in helicoid, sectional, ribbon and special designs to meet your requirements.
- B JOB RATED COMPONENTS:** Selected to meet the performance required. Precisely worked to insure a longer lasting, truer running unit.
Jig-Drilled Couplings: Assures easy shaft alignment and assembly. Available with "Redi-Change" clamping key for quick disassembly of the conveyor screw.
Tem-U-Lac Self Locking Coupling Bolts: Guards against system damage and costly down time caused by coupling bolts or nuts working loose.
- C HANGERS AND BEARINGS:** Various styles and bearing materials selected to meet your needs.
- D TROUGH ENDS:** Several bearing and seal styles are available to match your application.
- E TROUGHS, COVERS, CLAMPS AND SHROUDS:** Ruggedly constructed standard "U" and other styles of troughs including tubular. Covers, clamps and shrouds available for all applications.
- F N-WELD FLANGE:** Continuously welded steel flange holds the trough in alignment.
- G DISCHARGE SPOUTS:** All types available—located where you need them—with hand, electric, hydraulic or air powered gates.
- H SUPPORTING FEET AND SADDLES:** Align and fasten the trough to the floor or existing structure.

SCREW CONVEYOR DRIVES AND HP

TO QUOTE YOUR DRIVE PLEASE PROVIDE THE FOLLOWING:

Capacity desired, material to be conveyed, moisture content, degree of incline (if any), length, percent of fill, Class I (uniform load, three to ten hours of service) or Class II (heavy load, ten hours of service or more).

PRICE INCLUDES: Gearbox, motor mount, drive shaft, adapter, sheaves with bushings, belts and belt guard.



HORSEPOWER REQUIREMENTS FOR REDUCER DRIVEN U-TROUGH

45% LOAD FACTOR

Trough Dia.	9"	12"	14"	16"	18"
Cap. BPH	1000	2200	3500	4800	6600
RPMs	160	150	140	130	125
Length	H.P.	H.P.	H.P.	H.P.	H.P.
25 ft.	2	5	5	5	7.5
40 ft.	3	5	7.5	7.5	10
75 ft.	5	7.5	10	15	20
100 ft.	5	10	15	20	25
125 ft.	7.5	10	15	20	30

60% LOAD FACTOR

Trough Dia.	9"	12"	14"	16"	18"
Cap. BPH	1500	3000	4700	6500	8800
RPMs	160	150	140	130	125
Length	H.P.	H.P.	H.P.	H.P.	H.P.
25 ft.	3	3	5	7.5	7.5
40 ft.	5	7.5	7.5	10	10
75 ft.	5	7.5	15	15	25
100 ft.	7.5	10	15	20	30
125 ft.	7.5	15	20	25	40

90% LOAD FACTOR

Trough Dia.	9"	12"	14"	16"	18"
Cap. BPH	2000	4400	7000	9600	13000
RPMs	160	150	140	130	125
Length	H.P.	H.P.	H.P.	H.P.	H.P.
25 ft.	5	5	7.5	7.5	10
40 ft.	5	7.5	10	15	20
75 ft.	7.5	15	20	25	30
100 ft.	7.5	15	25	30	40
125 ft.	10	20	30	40	50

All capacities and rated horsepower are based on clean, dry corn conveyed horizontally. Other grains, moisture content, and degree of incline will affect capacity and horsepower rating.

SCREW CONVEYOR COMPLETE UNITS

6" U-TROUGH SCREW CONVEYOR

COMPLETE CONVEYOR AS FOLLOWS: 6H304 1/8" helicoid screw, 1-1/2" coupling and tail shafts, coupler bolts, 14ga double flanged trough, 16ga flat cover w/clamps, 226 hangers with wood bearing, (1) end plate with ball bearing, end plate for screw drive, support feet, discharge spout and assembly bolts

DESCRIPTION	PRICE
6" x 10' Head or Starter Section	
6" x 10' Extension Section	
6" x 5' Extension Section	
Add for 10' Section 1/4" Flight	
Add for 5' Section 1/4" Flight	
Add for 10' Section 10ga. Trough	
Add for 5' Section 10ga. Trough	

- For optional accessories see pages 17–21 in **Screw Conveyor Components** section
- All prices are for unassembled conveyor
- Non-stock item

9" U-TROUGH SCREW CONVEYOR

COMPLETE CONVEYOR AS FOLLOWS: 9H306 3/16" helicoid screw, 1-1/2" coupling and tail shafts, coupler bolts, 10ga double flanged trough, 14ga flat cover w/clamps, 226 hangers with wood bearing, (1) end plate with ball bearing, end plate for screw drive, support feet, discharge spout and assembly bolts

DESCRIPTION	PRICE
9" x 10' Head or Starter Section	
9" x 10' Extension Section	
9" x 5' Extension Section	
Add for 10' Section 3/8" Flight	
Add for 5' Section 3/8" Flight	

- For optional accessories see pages 17–21 in **Screw Conveyor Components** section
- All prices are for unassembled conveyor
- Non-stock item

12" U-TROUGH SCREW CONVEYOR

COMPLETE CONVEYOR AS FOLLOWS: 12H408 1/4" helicoid screw, 2" coupling and tail shafts, coupler bolts, 10ga double flanged trough, 14ga flat cover w/clamps, 226 hangers with wood bearing, (1) end plate with ball bearing, end plate for screw drive, support feet, discharge spout and assembly bolts

DESCRIPTION	PRICE
12" x 12' Head or Starter Section	
12" x 12' Extension Section	
12" x 6' Extension Section	
Add for 12' Section 3/8" Flight	
Add for 6' Section 3/8" Flight	

- For optional accessories see pages 17–21 in **Screw Conveyor Components** section
- All prices are for unassembled conveyor
- Non-stock item

** Non-stock item

SCREW CONVEYOR COMPLETE UNITS

14" U-TROUGH SCREW CONVEYOR

STANDARD DUTY COMPLETE CONVEYOR AS FOLLOWS: 14H508 1/4" helicoid screw, 2-7/16" coupling and tail shafts, coupler bolts, 10ga double flanged trough, 14ga flat cover with clamps, 226 hangers with wood bearing, (1) end plate with ball bearing, end plate for screw drive, support feet, discharge spout and assembly bolts

HEAVY DUTY COMPLETE CONVEYOR AS FOLLOWS: 14H614 7/16" helicoid screw, 3" coupling and tail shafts, coupler bolts, 10ga double flanged trough, 14ga flat cover with clamps, 226 hangers with wood bearing, (1) end plate with ball bearing, end plate for screw drive, support feet, discharge spout and assembly bolts

DESCRIPTION	PRICE	HEAVY DUTY PRICE
14" x 12' Head or Starter Section		
14" x 12' Extension Section		
14" x 6' Extension Section		

- For optional accessories see pages 17–21 in **Screw Conveyor Components** section
- All prices are for unassembled conveyor

16" U-TROUGH SCREW CONVEYOR

COMPLETE CONVEYOR AS FOLLOWS: 16H614 7/16" helicoid screw, 3" coupling and tail shafts, coupler bolts, 10ga double flanged trough, 14ga flat cover with clamps, 226 hangers with wood bearing, (1) end plate with ball bearing, end plate for screw drive, support feet, discharge spout and assembly bolts

DESCRIPTION	PRICE
16" x 12' Head or Starter Section	
16" x 12' Extension Section	
16" x 6' Extension Section	
<i>16H610 5/16" Helicoid Screws are also available**</i>	

- For optional accessories see pages 17–21 in **Screw Conveyor Components** section
- All prices are for unassembled conveyor

18" U-TROUGH SCREW CONVEYOR

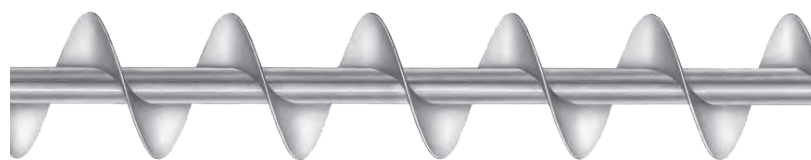
COMPLETE CONVEYOR AS FOLLOWS: 18H610 5/16" helicoid screw, 3" coupling and tail shafts, coupler bolts, 10ga double flanged trough, 12ga flat cover with clamps, 226 hangers with wood bearing, (1) end plate with ball bearing, end plate for screw drive, support feet, discharge spout and assembly bolts

DESCRIPTION	PRICE
18" x 12' Head or Starter Section	
18" x 12' Extension Section	
18" x 6' Extension Section	

- For optional accessories see pages 17–21 in **Screw Conveyor Components** section
- All prices are for unassembled conveyor

SCREW CONVEYOR COMPONENTS

IN STOCK!



RIGHT HAND HELICOID CONVEYOR SCREW

PART NUMBER	OD	DIAMETER OF COUPLER SHAFT	LENGTH	FLIGHT THICKNESS	WEIGHT #	PRICE
101-0420 6H304	6"	1-1/2"	9' 10"	1/8"	50	
101-0495 6H308	6"	1-1/2"	9' 10"	1/4"	64	
101-0560 6H312	6"	1-1/2"	9' 10"	3/8"	78	
101-0636 9H306	9"	1-1/2"	9' 10"	3/16"	70	
101-0701 9H312	9"	1-1/2"	9' 10"	3/8"	101	
101-0842 9H412	9"	2"	9' 10"	3/8"	121	
101-1121 12H408	12"	2"	11' 10"	1/4"	140	
101-1196 12H412	12"	2"	11' 10"	3/8"	175	
101-1337 12H512	12"	2-7/16"	11' 9"	3/8"	200	
101-1477 14H508	14"	2-7/16"	11' 9"	1/4"	170	
101-1543 14H614	14"	3"	11' 9"	7/16"	236	
101-1618 16H610	16"	3"	11' 9"	5/16"	228	
101-1758 16H614	16"	3"	11' 9"	7/16"	267	
101-1899 18H610	18"	3"	11' 9"	5/16"	292	

PIPE BUSHINGS

MUST BE FIELD DRILLED

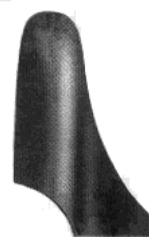
PART NUMBER	DESCRIPTION	WEIGHT #	PRICE
B250-2	2.50" OD x 2.00" ID	2.4	
141-0554	3.00" OD x 2.437" ID	4.1	
141-0661	3.50" OD x 3.00" ID	4.3	
141-0778	4.00" OD x 3.00" ID	8.3	

CUSTOM SIZES AVAILABLE!



END LUGS

SIZE	PART NUMBER INTAKE	PART NUMBER DISCHARGE	WEIGHT #	PRICE
6"	145-0220	145-0881	.06	
9"	145-0337	145-0998	.16	
12"	145-0444	145-1103	.35	
14" and 16"	145-0550	145-1210	.53	
18"	145-0667	145-0667	1.5	



Formed Steel Lug for Feed End



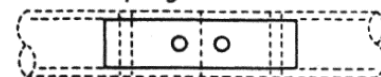
Formed Steel Lug for Discharge End

** Non-stock item

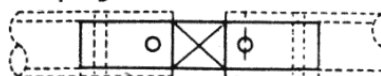
CONVEYOR COUPLING SHAFT

PART NUMBER	DESCRIPTION	WEIGHT #	PRICE
147-0335	1-1/2" x 11-1/2" Standard Coupler	5.6	
147-0442	2" x 11-1/2" Standard Coupler	9.6	
147-0558	2-7/16" x 12-3/4" Standard Coupler	16.2	
147-0772	3" x 13" Standard Coupler	24.7	
147-2208	1-1/2" x 9-1/2" Close Coupler	5.0	
147-2315	2" x 9-1/2" Close Coupler	9.0	
147-2422	2-7/16" x 9-3/4" Close Coupler	13.0	
147-2539	3" x 10" Close Coupler	20.0	

Close Coupling



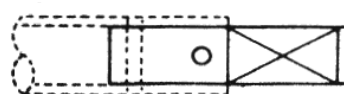
Coupling



CONVEYOR END SHAFT

PART NUMBER	DESCRIPTION	WEIGHT #	PRICE
150-0560	1-1/2" x 8-1/4" End Shaft	4.2	
150-1055	2" x 8-5/8" End Shaft	7.6	
150-1477	2-7/16" x 9-5/8" End Shaft	13.0	
150-1964	3" x 10-5/8" End Shaft	21.0	

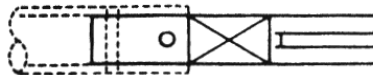
End



CONVEYOR DRIVE SHAFT

PART NUMBER	DESCRIPTION	WEIGHT #	PRICE
152-0568	1-1/2" x 11-1/2" Drive Shaft	5.8	
152-0915	2" x 13-1/8" Drive Shaft	11.7	
152-1269	2-7/16" x 15-1/8" Drive Shaft	20.0	
152-1681	3" x 16-5/8" Drive Shaft	33.3	

Drive



** Non-stock item

SCREW CONVEYOR COMPONENTS

PART NUMBER	DESCRIPTION	WEIGHT #	PRICE
155-6091	1/2" x 3" Temulac Coupler Bolt (Coupler Size 1-1/2")	.25	
155-6125	5/8" x 3-5/8" Temulac Coupler Bolt (Coupler Size 2")	.45	
155-6158	5/8" x 4-3/8" Temulac Coupler Bolt (Coupler Size 2-7/16")	.52	
155-6182	3/4" x 5" Temulac Coupler Bolt (Coupler Size 3" – 14H614 and 16H610)	.86	
155-6257	3/4" x 5-1/2" Temulac Coupler Bolt (Coupler Size 3" – 16H614)	.88	



HANGERS less/BEARING, STYLE 226



PART NUMBER	DESCRIPTION	WEIGHT #	PRICE
175-1619	6" x 1-1/2" Hanger	6	
175-1684	9" x 1-1/2" Hanger	8	
175-1718	9" x 2" Hanger	9	
175-1965	12" x 2" Hanger	14	
175-1981	12" x 2-7/16" Hanger	20	
175-2013	14" x 2-7/16" Hanger	23	
175-2039	14" x 3" Hanger	25	
175-2104	16" x 3" Hanger	28	
175-3029	18" x 3" Hanger	29	

INSERTS FOR HANGERS



PART NUMBER	DESCRIPTION	PRICE
192-0185	1-1/4" Wood	
192-0214	1-1/2" Wood	
192-0289	2" Wood	
192-0354	2-7/16" Wood	
192-0420	3" Wood	
192-0495	3-7/16" Wood	
194-0147	1-1/2" Nylatron	
194-0212	2" Nylatron	
194-0287	2-7/16" Nylatron	
194-0352	3" Nylatron	
194-0402	3-7/16" Nylatron	

CONVEYOR TROUGHS

PART NUMBER	DESCRIPTION	WEIGHT #	PRICE
301-1434	6" x 10' 10ga	60	
301-1764	9" x 10' 10ga	150	
301-2978	12" x 12' 10ga	228	
301-3190	14" x 12' 10ga	276	
301-3414	16" x 12' 10ga	300	
301-3521	18" x 12' 10ga	336	



**CUSTOM SIZES
AVAILABLE!**

- Other trough styles and gauges are available

** Non-stock item

SCREW CONVEYOR COMPONENTS

BARRON FLANGED COVERS



COVER DESCRIPTION	WEIGHT #	PART NUMBER CLAMPS AND GASKET	PRICE	PART NUMBER COVER ONLY	PRICE	PART NUMBER CLAMPS ONLY	PRICE
6" x 10' 16ga	25	310-3124		310-0443		320-0334	
9" x 10' 14ga	40	310-3231		310-0559		320-0441	
12" x 12' 14ga	60	310-3454		310-1102		320-0664	
14" x 12' 14ga	66	310-3561		310-1219		320-0771	
16" x 12' 14ga	72	310-3678		310-1326		320-0888	
18" x 12' 12ga	114	310-3785		310-1433		320-0995	

TROUGH END FLANGES



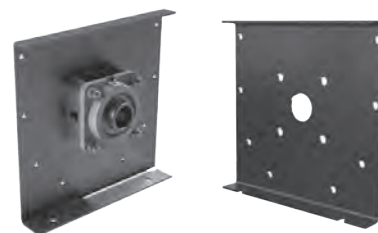
PART NUMBER	SIZE	WEIGHT #	PRICE
332-0330	6"	2	
332-0447	9"	4	
332-0660	12"	5	
332-0777	14"	6.5	
332-0892	16"	7.5	
332-1320	18"	10.5	

SUPPORT FEET



PART NUMBER	SIZE	WEIGHT #	PRICE
335-0212	6"	2	
335-0287	9"	4.5	
335-0428	12"	6	
335-0493	14"	7	
335-0568	16"	7.5	
335-0634	18"	9.5	

TROUGH ENDS WITH FOOT



SIZE	PART NUMBER WITH BEARING	WEIGHT #	PRICE	PART NUMBER WITHOUT BEARING	WEIGHT #	PRICE
6" x 1-1/2"	212-0848	12		264-0217	10	
9" x 1-1/2"	212-0913	23		264-0282	16.5	
9" x 2"	212-0988	25		264-0357	16.5	
12" x 2"	212-1192	34		264-0563	29	
12" x 2-7/16"	212-1267	39		264-0639	29	
14" x 2-7/16"	212-1408	54		264-0779	33	
14" x 3"	212-1473	63		264-0845	33	
16" x 3"	212-1549	74		264-0910	44	
18" x 3"	212-1614	100		264-0985	77	

** Non-stock item

SCREW CONVEYOR COMPONENTS

TROUGH COVER FASTENERS

PART NUMBER	DESCRIPTION	WEIGHT #	PRICE
323-0711	Screw Cover Clamp	.43	

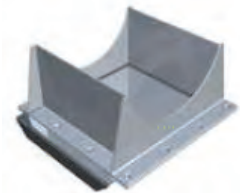
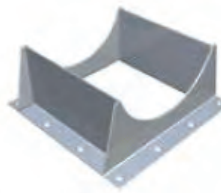
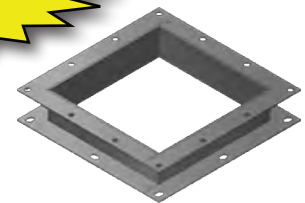


SCREW CONVEYOR TRANSITIONS

Screw conveyor punch to standard punch

PART NUMBER	DESCRIPTION	PRICE
SCT9	9" to 10" Standard	
SCT12	12" to 12" Standard	
SCT14	14" to 14" Standard	
SCT16	16" to 16" Standard	

NEW



STUB DISCHARGE SPOUTS

SIZE	GAUGE	PART NUMBER	WEIGHT #	PRICE	PART NUMBER WITH SLIDE GATE	WEIGHT #	PRICE
6"	10	342-0312	4		342-1872	10	
9"	10	342-0429	12		342-2037	16	
12"	7	342-0700	27		342-2318	33	
14"	7	342-0841	34		342-2458	41	
16"	7	342-0981	38		342-2599	49	
18"	7	342-1120	52		342-2730	64	

RACK & PINION DISCHARGE GATES W/ HAND WHEEL



SIZE	SLIDE GAUGE	PART NUMBER OF FLAT SLIDE	WEIGHT #	PRICE	PART NUMBER OF CURVED SLIDE	WEIGHT #	PRICE
6"	12	350-1566	41		350-0105	38	
9"	10	350-1582	52		350-0133	53	
12"	7	350-1624	79		350-0162	81	
14"	7	350-1640	94		350-0188	99	
16"	7	350-1665	106		350-0204	115	
18"	7	350-1731	131		350-0238	150	

• Add \$52.00 for a Chain Wheel

** Non-stock item

AR STEEL TROUGH LINERS

- Roll formed 160 degrees in 4' lengths – 10ga AR steel
- Weld-in – No need to disassemble conveyor
- Service far exceeds life of original trough
- Other sizes, lengths and styles available
- Call for quantity pricing

PART NUMBER	SIZE	WEIGHT/4 FT.	S/P PER 4 FT.
STL6	6"	17.00	
STL9	9"	26.04	
STL12	12"	34.04	
STL14	14"	38.04	
STL16	16"	42.04	
STL18	18"	49.60	
STL20	20"	54.80	
STL24	24"	65.00	



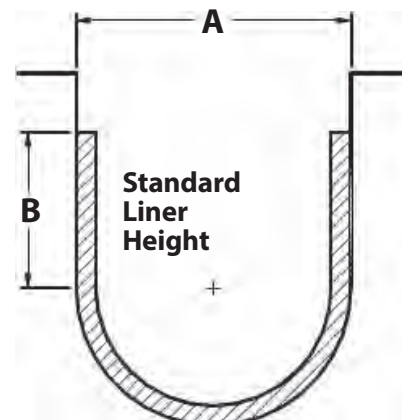
AR STEEL SHEET

PART NUMBER	SIZE	S/P PER SHEET
ARS200	4' x 10'	

UHMW LINERS

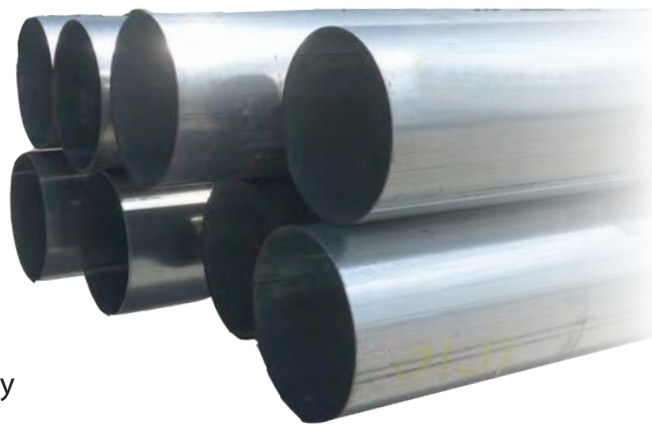
- Predrilled and beveled for easier installation
- Quieter operation
- **4' lengths with seven bolt holes per side**
- Reduces trough wear
- Lightweight for ease of handling
- Requires 5/16" x 1-1/4" elevator bolts, nuts & washers
- Priced FOB factory

ID	SIZES		PRICE PER FOOT	
	A	B	3/16"	1/4"
6"	7"	4"		
9"	10"	4"		
12"	13"	5"		
14"	15"	3-1/4"		
16"	17"	6-1/2"		
18"	19"	5"		
20"	21"	3-1/4"		
24"	25"	4-1/2"		



ROUND SPOUTING

- Available in 20' or 40' lengths
- Prices submitted upon request
- Prices based on quantity of purchase
- Diameters and gauges listed below in stock on our lot in Crawfordsville, IN
- Stainless steel spouting also available
- Other diameters available – Call for price and availability



PART NUMBER	OUTSIDE DIAMETER	GAUGE	FINISH	WEIGHT/FT.
S414G	4"	14	GALV	3.5
S514G	5"	14	GALV	4.4
S614G	6"	14	GALV	4.8
S612G	6"	12	GALV	6.9
S610G	6"	10	GALV	8.6
S714G*	7"	14	GALV	7.9
S814G	8"	14	GALV	6.5
S812G	8"	12	GALV	9.0
S810G	8"	10	GALV	11.6
S87G	8"	7	GALV	15.6
S1012G	10"	12	GALV	11.3
S1010G	10"	10	GALV	14.5
S107G	10"	7	GALV	19.7
S1014HR	10"	1/4" WALL	HOT ROLL	26.0
S1210G	12"	10	GALV	17.5
S127G	12"	7	GALV	23.7
S1214HR	12"	1/4" WALL	HOT ROLL	36.7
S1410G	14"	10	GALV	20.4
S147G	14"	7	GALV	27.7
S1414HR	14"	1/4" WALL	HOT ROLL	36.7
S167G	16"	7	GALV	31.7

* 7" OD spouting only available in 20' lengths



FLANGES – ROUND AND SQUARE

ROLLED ANGLE FLANGE RINGS - PUNCHED



PART NUMBER	SIZE	DIMENSIONS	ID	WEIGHT #	PRICE
AR4	4"	1 x 1 x 10ga	4-1/16"	.850	
AR5	5"	1 x 1 x 10ga	5-1/8"	.300	
AR6	6"	1-1/4 x 1-1/4 x 1/8	6-1/8"	1.10	
AR7	7"	1-1/4 x 1-1/4 x 1/8	7-1/8"	2.00	
AR8H	8"	1-1/4 x 1-1/4 x 3/16	8-1/8"	3.00	
AR10H	10"	1-1/4 x 1-1/4 x 3/16	10-1/8"	4.00	
AR12	12"	1-1/2 x 1-1/2 x 3/16	12-3/16"	5.10	
AR14	14"	1-1/2 x 1-1/2 x 3/16	14-3/16"	7.00	
AR16	16"	1-1/2 x 1-1/2 x 3/16	16-3/16"	8.00	
AR18	18"	1-1/2 x 1-1/2 x 3/16	18-3/16"	9.00	
AR20	20"	1-1/2 x 1-1/2 x 3/16	21-1/8"	9.50	
AR24	24"	1-1/2 x 1-1/2 x 3/16	24-3/16"	11.50	

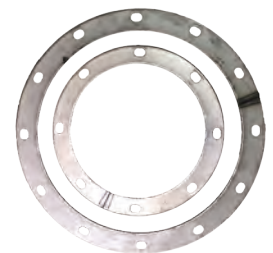
ROLLED ANGLE FLANGE RINGS FOR SCHEDULE 40 PIPE

PART NUMBER	SIZE	DIMENSIONS	WEIGHT #	PRICE
ARP8	8-5/8"	1-1/4 x 1-1/4 x 3/16	2.50	
ARP10	10-3/4"	1-1/4 x 1-1/4 x 3/16	5.25	
ARP12	12-3/4"	1-1/2 x 1-1/2 x 3/16	6.25	



ROLLED FLAT FLANGES

PART NUMBER	SIZE	DIMENSIONS	WEIGHT #	PRICE
RFF8	8"	1-1/4 x 3/16	1.7	
RFF10	10"	1-1/4 x 3/16	2.0	
RFF12	12"	1-1/2 x 3/16	3.0	
RFF14	14"	1-1/2 x 3/16	4.1	



SQUARE ANGLE FLANGES

PART NUMBER	SIZE	DIMENSIONS	WEIGHT #	PRICE
SAF6	6"	1-1/4 x 3/16	3.0	
SAF8	8"	1-1/4 x 3/16	3.3	
SAF10	10"	1-1/4 x 3/16	5.6	
SAF12	12"	1-1/2 x 3/16	7.2	
SAF14	14"	1-1/2 x 3/16	9.0	
SAF16	16"	1-1/2 x 3/16	10.25	



** Non-stock item

CLAMP BANDS AND ADJUSTABLE ELBOWS

CLAMP BANDS

- Clamp bands 4" to 10" include 3/8" bolts and nuts
- Clamp bands 12" to 16" include 1/2" bolts and nuts

PART NUMBER	SIZE	WEIGHT #	PRICE
CB4	4"	1.2	
CB6	6"	1.9	
CB8	8"	2.3	
CB10	10"	2.5	
CB12	12"	3.3	
CB14	14"	3.6	
CB16	16"	4.1	
CBB38	Clamp band bolts and nuts - 3/8"		
CBB12	Clamp band bolts and nuts - 1/2"		



ADJUSTABLE ELBOWS

- 3/16" Urethane used in lined elbows

PART NUMBER	SIZE	FINISH	WEIGHT #	10GA PRICE	7GA PRICE	10ga.LINED PRICE	1/4" WALL PRICE
AE410	4"	PAINTED	3.2		-----	-----	-----
AE610	6"	GALV	5.7		-----	-----	-----
AE87	8"	GALV	9.5	-----		-----	-----
AE810L	8"	GALV	9.1	-----	-----		-----
AE107	10"	GALV	12.6	-----		-----	-----
AE1010L	10"	GALV	11.7	-----	-----		-----
AE127	12"	GALV	16.8	-----		-----	-----
AE1210L	12"	GALV	16.3	-----	-----		-----
AE147G	14"	GALV	21.3	-----		-----	-----
AE1410L	14"	GALV	19.3	-----	-----		-----
AE1614	16"	GALV	26.1	-----	-----	-----	
AE1610L	16"	GALV	26.5	-----	-----		-----

SQUARE PAN VALVES

- Square inlet and outlets, flanged, 10ga pan, 10ga body, galvanized
- 6" to 10" valves have 3/16" x 1-1/4" flanges
- 12" to 14" valves have 3/16" x 1-1/2" flanges
- Square to round transitions and flat top adapters are not included

TWO-WAY Y VALVE* 45 DEGREE



**PRODUCT
SPECS ON
PG. 52**

SIZE	PART NUMBER	WEIGHT #	PRICE
6"	YV6G	33	
8"	YV8G	38	
10"	YV10G	46	
12"	YV12G	69	
14"	YV14G	100	

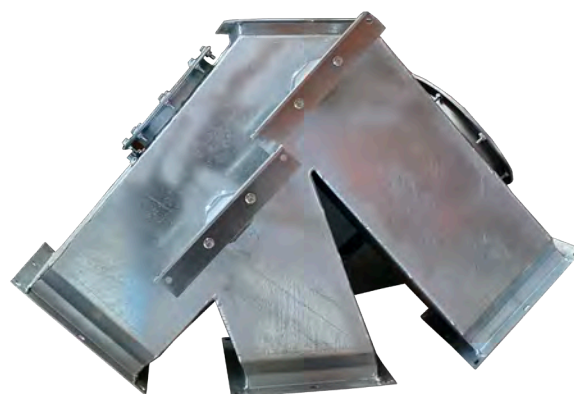


TWO-WAY K VALVE* 45 DEGREE

SIZE	PART NUMBER WITH SLIDE GATE	WEIGHT #	PRICE
6"	KV6G	40	
8"	KV8G	54	
10"	KV10G	73	
12"	KV12G	124	
14"	KV14G	161	

THREE-WAY PAN VALVE* 45 DEGREE

SIZE	PART NUMBER	WEIGHT #	PRICE
6"	TWV6G	-----	
8"	TWV8G	52	
10"	TWV10G	70	
12"	TWV12G	120	
14"	TWV14G	155	



* See **page 45** in catalog for more information on this item

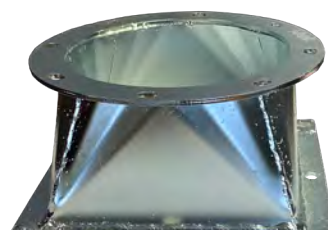
** Non-stock item

TRANSITIONS AND FLAT TOP ADAPTERS

SQUARE TO ROUND TRANSITIONS*

- Galvanized, 6" thru 10" have 3/16" x 1-1/4" square flanges
- 12" thru 14" have 3/16" x 1-1/2" square flanges

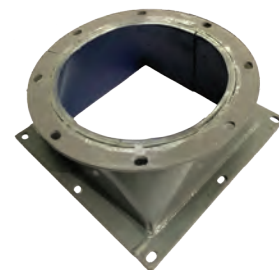
PART NUMBER	SIZE	GAUGE	HEIGHT	WEIGHT #	PRICE
SR610G	6"	10	6.00"	7.3	
SR810G	8"	10	5.25"	9.6	
SR1010G	10"	10	5.25"	11.8	
SR10-8G	10" - 8"	8	7.00"	10.9	
SR127G	12"	7	6.50"	17.2	
SR12-10G	12" - 10"	7	8.00"	15.8	
SR147G	14"	7	6.50"	20.1	
SR14-10G	14" - 10"	7	10.00"	36.0	
SR14-12G	14" - 12"	7	10.00"	33.0	



LINED SQUARE TO ROUND TRANSITIONS*

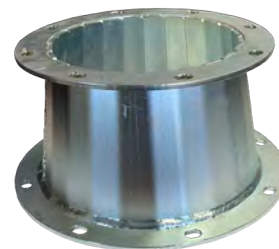
- Specifications same as **Square to Round Transitions** above

PART NUMBER	SIZE	GAUGE	HEIGHT	WEIGHT #	LINING	PRICE
SR810L	8"	10	5.25"	11.5	URETHANE	
SR1010L	10"	10	5.25"	14.3	URETHANE	
SR1210L	12"	10	6.50"	20.3	URETHANE	
SR147AR	14"	10	6.50"	24.1	AR STEEL	



ROUND TO ROUND TRANSITIONS* (GALVANIZED)

PART NUMBER	SIZE	GAUGE	HEIGHT	WEIGHT #	PRICE
RR68G	6" - 8"	10	6"	8.3	
RR810G	8" - 10"	7	6"	12.7	
RR1012G	10" - 12"	7	6"	16.0	
RR1214G	12" - 14"	7	6"	19.6	



FLAT TOP ADAPTERS (GALVANIZED)

PART NUMBER	SIZE	HEIGHT	WEIGHT #	PRICE
FTA6G	6"	1-3/8"	3.0	
FTA8G	8"	1-3/8"	6.0	
FTA10G	10"	1-3/8"	8.0	
FTA12G	12"	1-5/8"	10.0	
FTA14G	14"	1-5/8"	14.0	



* See **page 45** in catalog for more information on this item

** Non-stock item

HALF BANDS, FIXED CUSHION BOX, TUBE JOINERS

TUBE JOINER (GALVANIZED WITH HARDWARE)

PART NUMBER	SIZE	GAUGE	LENGTH	WEIGHT #	PRICE
GTJ4	4"	14	12"	6.0	
GTJ6	6"	14	24"	8.0	
GTJ8	8"	14	24"	14.0	
GTJ10	10"	10	24"	24.0	
GTJ12	12"	10	24"	36.0	



HALF BANDS

- With bolts, three holes per side, sold as a two piece pair

SIZE	GAUGE	WIDTH	HOT ROLLED PART NUMBER	PRICE	GALVANIZED PART NUMBER	PRICE
8"	10	8"	HRHB8		GHB8	
10"	10	8"	HRHB10		GHB10	
12"	7	8"	HRHB12		GHB12	
14"	7	8"	HRHB14		GHB14	



FIXED CUSHION BOX

- Galvanized finish, bolted cleanout
- 6" 10ga construction, 8" to 14" 7ga construction

PART NUMBER	SIZE	HEIGHT	WEIGHT #	PRICE
FCB6	6"	15-1/2"	24.0	
FCB8	8"	20"	44.0	
FCB10	10"	24"	54.0	
FCB12	12"	26"	84.0	
FCB14	14"	29"	116.0	



OVERFLOW VALVE*

- Galvanized, round in and round out
- Must be installed vertically
- Includes SQ-RD transition for the discharge

NOTE: Some material may overflow at all times

PART NUMBER	SIZE	GAUGE	HEIGHT***	WEIGHT #	PRICE
OV6	6"	10	26"	-----	
OV8	8"	7	28-1/4"	72	
OV10	10"	7	35"	105	
OV12	12"	7	32-3/8"	141	
OV14	14"	7	39-1/4"	165	



CUSHION BOXES AND FLOW RETARDERS

SELF-CLEANING ADJUSTABLE CUSHION BOX WITH SQ-RD TRANSITION

GALVANIZED*

PART NUMBER	SIZE	GAUGE	HEIGHT***	WEIGHT #	PRICE
ACB6-G	6"	7	20-5/8"	60	
ACB8-G	8"	7	22-3/8"	104	
ACB10-G	10"	7	26"	156	
ACB12-G	12"	7	30-7/8"	252	
ACB14-G	14"	7	31"	328	
ACB16-G	16"	7	38-3/4"	360	



PAINTED*

PART NUMBER	SIZE	GAUGE	HEIGHT***	WEIGHT #	PRICE
ACB10	10"	7	31"	156	
ACB12	12"	7	37"	252	
ACB14	14"	7	42"	328	

COLLECTION BOX

- Painted, angle rings included (shipped loose)

PART NUMBER	SIZE	GAUGE	HEIGHT	PRICE
DCB8	8"	10	10"	
DCB10	10"	10	12"	
DCB12	12"	10	14"	
DCB14	14"	10	16"	
DCB16	16"	10	18"	



GRAIN RETARDER

- Galvanized, round in and round out

PART NUMBER	SIZE	GAUGE	LENGTH	WEIGHT #	PRICE
GR6	6"	10	26"	50	
GR8	8"	10	32"	58	
GR10	10"	10	34"	69	
GR12	12"	8	37"	84	
GR14	14"	8	40.5"	99	



* See page 52 in catalog for more information on this item ** Non-stock item

*** Height measurement includes the square to round transition

GALVANIZED CABLE CLAMPS AND THIMBLES

SIZE	CLAMPS PART NUMBER	WEIGHT/100	PRICE	THIMBLES PART NUMBER	WEIGHT/100	PRICE
3/16"	GCC316	6 lbs.		GCT316	3.5 lbs.	
1/4"	GCC14	13 lbs.		GCT14	3.5 lbs.	
5/16"	GCC516	15 lbs.		GCT516	5.0 lbs.	
3/8"	GCC38	21 lbs.		GCT38	7.0 lbs.	
3/8"	GCC38DF	47 lbs.		DROP FORGED		



SINGLE HOT-DIPPED GALVANIZED TRUSS FRAMES

PART NUMBER	SIZE	WEIGHT #	PRICE
GTF836	8" x 36"	60	
GTF848	8" x 48"	76	
GTF1036	10" x 36"	64	
GTF1048	10" x 48"	80	
GTF1248	12" x 48"	106	
GTF1260	12" x 60"	130	
GTF1448	14" x 48"	220	
GTF1460	14" x 60"	233	



- Welded construction with bolted side angles
- End anchors, cable, cable clamps, cable thimbles and turnbuckles not included
- Multiple frames can be used to make double and triple trusses
- For 8" and 10" triple trusses use (2) 36" frames and (1) 48" frame; for a 12" or 14" triple truss use (2) 48" frames and (1) 60" frame



WELD-ON ANCHOR BRACKET

- Angle is bent to fit on all spout sizes.

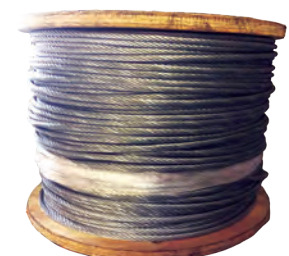
PRICED AT

GALVANIZED AIRCRAFT CABLE

- 7 x 19 preformed 500' and 1000' reels
- 5000' reels also available
- Stainless aircraft cable and wire rope quoted on request
- Quantity discounts are available

PART NUMBER	SIZE	BREAKING STRENGTH	WEIGHT P/1000'	S/P PER 500'	S/P PER 1000'
GAC316	3/16"	4200#	65#		
GAC14	1/4"	7000#	120#		
GAC516	5/16"	9800#	180#		
GAC38	3/8"	14400#	270#		

** Non-stock item



7/19 construction
7 strands. Each strand is made
of 19 individual wires.

WELDING SLEEVES & HAND SLIDE GATES

GALVANIZED TURNBUCKLES

- Drop forged, jaw and eye ends

PART NUMBER	SIZE	WEIGHT #	PRICE
GTB1212	1/2" x 12"	2.19	
GTB5812	5/8" x 12"	3.50	
GTB3412	3/4" x 12"	5.75	



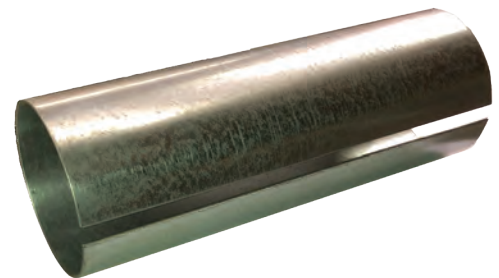
GALVANIZED END ANCHORS (TWO PIECE PAIR)

PART NUMBER	SIZE	GAUGE	WEIGHT #	PRICE
GEA8	8" x 5"	10	6	
GEA10	10" x 5"	10	7	
GEA12	12" x 5"	10	9	
GEA14	14" x 8"	7	23	



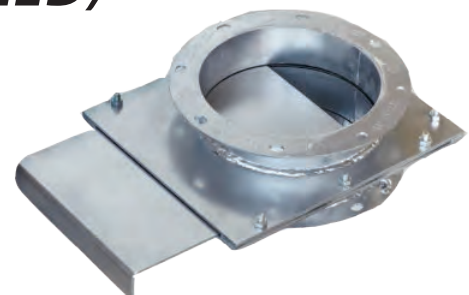
GALVANIZED SPOUT WELDING SLEEVES

PART NUMBER	SIZE	GAUGE	WEIGHT #	PRICE
GWS6	6" x 18"	10	6	
GWS8	8" x 18"	10	8	
GWS10	10" x 18"	10	10	
GWS12	12" x 18"	10	15	
GWS14	14" x 18"	10	18	



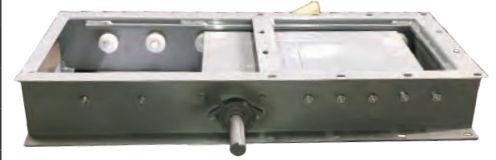
HAND SLIDE GATES* (GALVANIZED)

PART NUMBER	SIZE	WEIGHT #	PRICE
HSG6	6"	10.0	
HSG8	8"	15.0	
HSG10	10"	25.0	
HSG12	12"	35.0	



RACK & PINION ROLLER GATE WITH UHMW ROLLERS, FLANGE BEARINGS

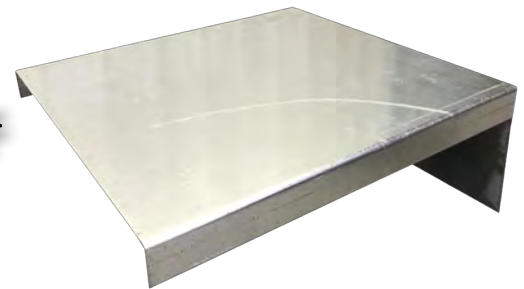
PART NUMBER	SIZE	WEIGHT #	L x W x H	PRICE
RPRG8ES	8"	35	23 x 11-3/8 x 4-5/8	
RPRG10ES	10"	45	27 x 13-1/4 x 4-5/8	
RPRG12ES	12"	55	31 x 15-1/4 x 4-5/8	
RPRG14ES	14"	60	35 x 17-1/4 x 4-5/8	
RPRG16ES	16"	70	39 x 19-5/16 x 4-5/8	
RPRG18ES	18"	95	43 x 21-1/4 x 4-3/4	



- Painted finish, 10ga body, 7ga slide
- Control wheel not included in price
- All gates available with electric or air controls – Call for pricing
- RPRG18 has a double rack, all others have a single rack

RACK & PINION WEATHER COVERS

PART NUMBER	SIZE	PRICE
RPRG8WC	8"	
RPRG10WC	10"	
RPRG12WC	12"	
RPRG14WC	14"	
RPRG16WC	16"	
RPRG18WC	18"	CALL



RACK & PINION ACCESSORIES

PART NUMBER	DESCRIPTION	WEIGHT #	PRICE
RW10	10" Cable/Rope Wheel	4.9	
CW11	11" Chain Wheel	12.6	
HW10	12" Hand Wheel	11.5	
R22	22" Cast Iron Rack	7.1	
PG	1" Bore Case Iron Pinion Gear	1.4	
PCC316	3/16" Proof Coil Chain (Per Ft.)	-----	



BUCKET ELEVATOR BOLTS AND LAGGING

NORWAY FLATHEAD ELEVATOR BOLTS W/ HEX NUTS

PART NUMBER	SIZE	S/P PER 100
ECB141	1/4" x 1"	
ECB14114	1/4" x 1-1/4"	
ECB14112	1/4" x 1-1/2"	
ECB516114	5/16" x 1-1/4"	
ECB516112	5/16" x 1-1/2"	
ECB5162	5/16" x 2"	



ZINC PLATED WASHERS

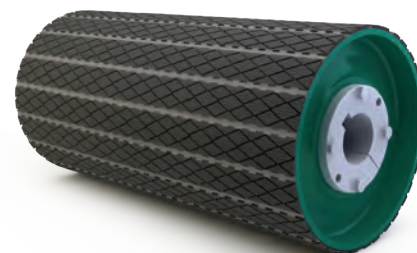
SIZE	FLAT WASHER PART NUMBER	S/P PER 100	LOCK WASHERS PART NUMBER	S/P PER 100
1/4"	FW14		LW14	
5/16"	FW516		LW516	



PULLEY SLIDE LAG **CRAFT SLIDE LAG PADS:** A unique and proven method of increasing conveyor and elevator performance. Designed for direct application to the drive pulley, this product can transform any belt system into a high performance, low maintenance operation. In addition to providing an outstanding increase in the co-efficiency of friction (traction) between the belt and pulley, it serves to protect the pulley face and belt cover from damage and provide a self-cleaning action to prevent material build up on the pulley.

**ORDER (1) DOUBLE RETAINER FOR EACH PAD
AND (1) SINGLE RETAINER FOR EVERY FOUR PADS**

PART NUMBER	DESCRIPTION	WEIGHT	PRICE
SLP500	EZ 500 Slide Lag Pad	14	
SLP501	EZ 501 NEO 60 Slide Lag Pad	14	
SLDR	Double Retainer		
SLSR	Single Retainer		

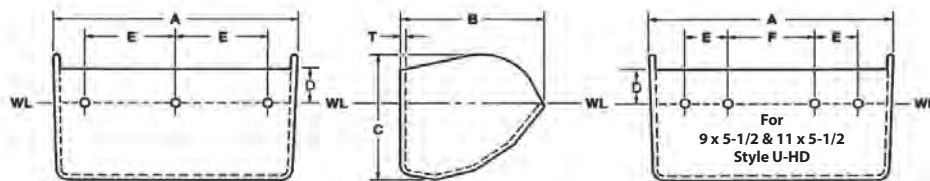


FACE WIDTH (IN.)

	12	14	16	18	20	22	24	26	30	32	36	38	40	44	46	51	54	60	66	72	NO. OF PAD ROWS
6	1	1	1	1	1	1	1	2	2	2	2	2	2	2	2	3	3	3	3	3	3
8	1	1	1	1	2	2	2	2	2	2	2	3	3	3	3	3	3	4	4	4	4
10	1	1	2	2	2	2	2	2	3	3	3	3	3	4	4	4	4	5	5	5	5
12	1	2	2	2	2	2	2	3	3	3	3	4	4	4	4	5	5	5	6	6	6
14	2	2	2	2	2	3	3	3	3	4	4	4	4	5	5	5	6	6	7	7	7
16	2	2	2	2	3	3	3	3	4	4	4	5	5	5	6	6	6	7	8	8	8
18	2	2	2	3	3	3	3	4	4	4	5	5	5	6	6	7	7	8	9	9	9
20	2	2	3	3	3	4	4	4	5	5	5	6	6	7	7	8	8	9	10	10	10
24	2	3	3	3	4	4	4	5	5	6	6	7	7	8	8	9	9	10	11	12	12
30	3	3	4	4	5	5	5	6	7	7	8	8	9	10	10	11	12	13	14	15	15
36	3	4	4	5	5	6	6	7	8	8	9	10	10	11	12	13	14	15	17	18	18
42	4	5	5	6	6	7	7	8	9	10	11	12	12	13	14	15	16	18	20	21	21
48	4	5	6	6	7	8	8	9	10	11	12	13	14	15	16	17	18	20	22	24	24
54	5	6	6	7	8	9	9	10	12	12	14	15	15	17	18	20	21	23	25	27	27
60	5	6	7	8	9	10	10	11	13	14	15	16	17	19	20	22	23	25	28	30	30
72	6	7	8	9	10	11	12	13	15	16	18	19	20	22	23	26	27	30	33	36	27

POLYETHYLENE ELEVATOR BUCKETS

Tapco Inc.



Standard Bolt Holes Drilled on the WL (Water Level) Line $\pm 1/4$ "

STYLE CC-HD (HEAVY DUTY) BUCKETS

NOTE: TAPCO recommends using WL (water level) fill + 10% for usable capacity. A gross capacity figure is no longer provided as it is inappropriate for rating an elevator bucket. 14 x 6 bucket was designed to fit Hunter Mfg. Grizzly elevators.

SIZE (NOMINAL) IN.	DIMENSIONS - ACTL (IN.) TOLERANCE A, B, C $\pm 1/8"$ - T $\pm 1/64"$				DRILLING - STD (IN.) HOLES DRILLED 1/32" OVERSIZE				CAPACITY ①				SPACING ON BELT (MINIMUM) IN.	WEIGHT (LBS.)		NUMBER PER CARTON
	LENGTH A	PROJ. B	DEPTH C	THICKNESS T	CENTER TO CENTER E F		NUMBER OF HOLES	BOLT DIAMETER	WL		WL + 10%					
									CU. IN.	CU. FT.	CU. IN.	CU. FT.				
3 x 2	3-1/4	2-1/2	2-1/16	11/64	1-3/4		2	1/4	6.0	.0035	6.60	.0038	3	.13	3.59	24
4 x 3	4-1/4	3-1/2	3-1/16	3/16	2-1/2		2	1/4	16.8	.0097	18.48	.0107	4	.26	7.08	24
5 x 4	5-1/4	4-1/2	4-1/16	13/64	3-3/16		2	1/4	35.8	.0207	39.38	.0228	5	.46	12.60	24
6 x 4	6-1/4	4-1/2	4-1/16	13/64	4-3/8		2	1/4	43.3	.0251	47.63	.0276	5	.53	14.28	24
7 x 4	7-1/4	4-1/2	4-1/16	13/64	2-11/16		3	1/4	49.7	.0288	54.67	.0316	5	.60	15.96	24
6 x 5	6-5/16	5-1/2	5-1/16	1/4	4-3/8		2	1/4	68.3	.0395	75.13	.0435	6	.80	20.88	24
7 x 5	7-5/16	5-1/2	5-1/16	1/4	2-11/16		3	1/4	75.8	.0439	83.38	.0483	6	.98	25.20	24
8 x 5	8-5/16	5-1/2	5-1/16	1/4	3-1/16		3	1/4	85.4	.0494	93.94	.0544	6	1.10	28.35	24
9 x 5	9-5/16	5-1/2	5-1/16	1/4	3-5/8		3	1/4	97.9	.0567	107.69	.0623	6	1.02	26.43	24
10 x 5	10-5/16	5-1/2	5-1/16	1/4	4-1/8		3	1/4	113.5	.0657	124.9	.0723	6	1.24	32.03	24
11 x 5	11-5/16	5-1/2	5-1/16	1/4	3		4	1/4	127.2	.0696	132.22	.0766	6	1.27	32.75	24
12 x 5	12-5/16	5-1/2	5-1/16	1/4	3-3/8		4	1/4	143.1	.0828	157.41	.0911	6	1.35	34.67	24
8 x 6	8-5/16"	6-5/8	6-1/16	1/4	3-1/16		3	1/4	124.5	.0720	136.95	.0793	7	1.34	35.00	24
9 x 6	9-5/16"	6-5/8	6-1/16	1/4	3-5/8		3	1/4	135.9	.0786	149.49	.0865	7	1.45	37.64	24
10 x 6	10-5/16"	6-5/8	6-1/16	1/4	4-1/8		3	1/4	150.4	.0870	165.44	.0957	7	1.57	40.52	24
11 x 6	11-5/16"	6-5/8	6-1/16	1/4	3		4	1/4	173.4	.1003	190.74	.1104	7	1.69	43.56	24
12 x 6	12-5/16"	6-5/8	6-1/16	1/4	3-1/8		4	1/4	185.4	.1073	203.94	.1180	7	1.76	45.24	24
13 x 6	13-5/16	6-5/8	6-1/16	1/4	3-5/8		4	1/4	203.8	.1179	224.18	.1297	7	1.85	24.48	12
14 x 6	14	6-5/8	5-7/8	1/4	3		5	1/4	198.3	.1148	218.13	.1262	7	1.98	26.04	12
10 x 7	10-7/16	7-3/4	7-1/16	9/32	4-1/8		3	5/16	219.4	.1270	241.34	.1397	8	2.01	18.53	8
11 x 7	11-7/16	7-3/4	7-1/16	9/32	3		4	5/16	234.2	.1355	257.62	.1491	8	2.31	21.13	8
12 x 7	12-7/16	7-3/4	7-1/16	9/32	3-3/8		4	5/16	248.2	.1436	273.02	.1580	8	2.43	22.09	8
13 x 7	13-7/16	7-3/4	7-1/16	9/32	3-5/8		4	5/16	284.4	.1646	312.84	.1810	8	2.62	23.71	8
14 x 7	14-7/16	7-3/4	7-1/16	9/32	3		5	5/16	301.9	.1747	332.09	.1922	8	2.76	25.03	8
15 x 7	15-7/16	7-3/4	7-1/16	9/32	3-1/4		5	5/16	331.4	.1918	364.54	.2110	8	3.02	26.91	8
16 x 7	16-7/16	7-3/4	7-1/16	9/32	2-7/8		6	5/16	346.5	.2005	381.15	.2206	8	3.13	27.99	8

STYLE CC-HD (HEAVY DUTY) "SUPER CAPACITY" BUCKETS

10 x 8	10-7/16	8-3/4	8-13/16	11/32	4-1/8		3	5/16	297.0	.1719	326.70	.1891	9	2.95	26.60	8
11 x 8	11-7/16	8-3/4	8-13/16	11/32	3		4	5/16	325.9	.1886	358.49	.2075	9	2.99	26.92	8
12 x 8	12-7/16	8-3/4	8-13/16	11/32	3-3/8		4	5/16	362.0	.2095	392.20	.2304	9	3.02	27.16	8
13 x 8	13-7/16	8-3/4	8-13/16	11/32	3-5/8		4	5/16	390.2	.2258	429.22	.2484	9	3.17	28.81	8
14 x 8	14-7/16	8-3/4	8-13/16	11/32	3		5	5/16	429.6	.2486	472.56	.2735	9	3.31	29.93	8
15 x 8	15-7/16	8-3/4	8-13/16	11/32	3-1/4		5	5/16	458.9	.2656	504.78	.2921	9	3.72	33.21	8
16 x 8	16-7/16	8-3/4	8-13/16	11/32	2-7/8		6	5/16	511.1	.2958	562.21	.3254	9	3.84	34.27	8
18 x 8	18-7/16	8-3/4	8-13/16	11/32	3-1/8		6	5/16	564.4	.3266	620.84	.3593	9	4.37	38.51	8
20 x 8	20-7/16	8-7/8	8-15/16	11/32	3-1/2		6	5/16	655.2	.3728	708.62	.4101	9	5.77	51.50	8

STYLE U-HD (HEAVY DUTY) BUCKETS FIT UNIVERSAL INDUSTRIES ELEVATORS

3-3/4 x 3					1-7/8		2	1/4								
6 x 4	6-1/4	4-1/8	4-1/16	13/64	2-3/4		2	1/4	35.4	.0205	38.94	.0225	4-1/4	.51	13.42	24
7 x 4-1/2	7-1/4	4-3/8	4-1/16	13/64	2-1/2		3	1/4	44.2	.0256	48.62	.0281	5	.58	15.10	24
9 x 5-1/2	9-5/16	5-1/2	5-1/16	1/4	1-3/4	3-1/2	4	1/4	97.9	.0567	107.69	.0623	6	1.02	26.43	24
11 x 5-1/2	11-5/16	6-5/8	6-1/16	1/4	1-3/4	2-3/4	5	1/4	173.4	.1003	190.74	1104	6	1.69	43.56	24
11 x 7	11-7/16	7-3/4	7-1/16	9/32	3-1/8		4	5/16	234.2	.1355	257.62	.1491	8	2.31	21.13	8

POLYETHYLENE ELEVATOR BUCKETS

CC-HD HEAVY DUTY POLYETHYLENE BUCKETS

Maxi-Lift Inc.



Tapco Inc.

- All buckets FOB St. Louis, MO
- Special Drilling, Venting and Low Profile Cut are available – Call for pricing
- Quantity discounts available

SIZE	NO. PER CARTON	PRICE
3 x 2	24	
4 x 3	24	
5 x 4	24	
6 x 4	24	
7 x 4	24	
6 x 5	24	
7 x 5	24	
8 x 5	24	
9 x 5	24	
10 x 5	24	
11 x 5	24	
12 x 5	24	
8 x 6	24	
9 x 6	24	
10 x 6	24	
11 x 6	24	
12 x 6	24	
13 x 6	12	
14 x 6	12	
10 x 7	8	
11 x 7	8	
12 x 7	8	
13 x 7	8	

SIZE	NO. PER CARTON	PRICE
14 x 7	8	
15 x 7	8	
16 x 7	8	
18 x 7	11	
20 x 7	11	
10 x 8	8	
11 x 8	8	
12 x 8	8	
13 x 8	8	
14 x 8	8	
15 x 8	8	
16 x 8	8	
18 x 8	8	
20 x 8	8	
22 x 8	8	
12 x 9	6	
14 x 9	6	
16 x 9	6	
18 x 9	6	
20 x 9	6	
16 x 10	6	
20 x 10	6	

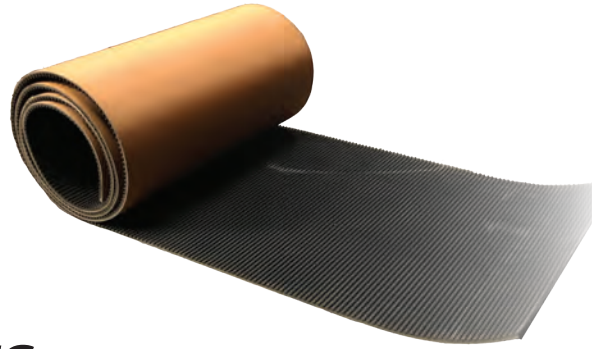
STYLE U-HD (UNIVERSAL FIT)

SIZE	NO. PER CARTON	PRICE
3-3/4 x 3	-----	
6 x 4	24	
7 x 4-1/2	24	
9 x 5-1/2	24	
11 x 5-1/2	24	
11 x 7	8	



ROUGH TOP LAGGING

PART NUMBER	DESCRIPTION	PRICE
RTB16	16" wide 2-ply 150 rough top lagging	
RTLA	Adhesive	



UHMW POLYETHYLENE SHEETS

- Virgin, white ultra high molecular weight polyethylene for wear strips, chute liners and other uses
- 4' x 10' sheets that are 1/8", 3/16", 1-3/8" or 1/2" thick are available upon request

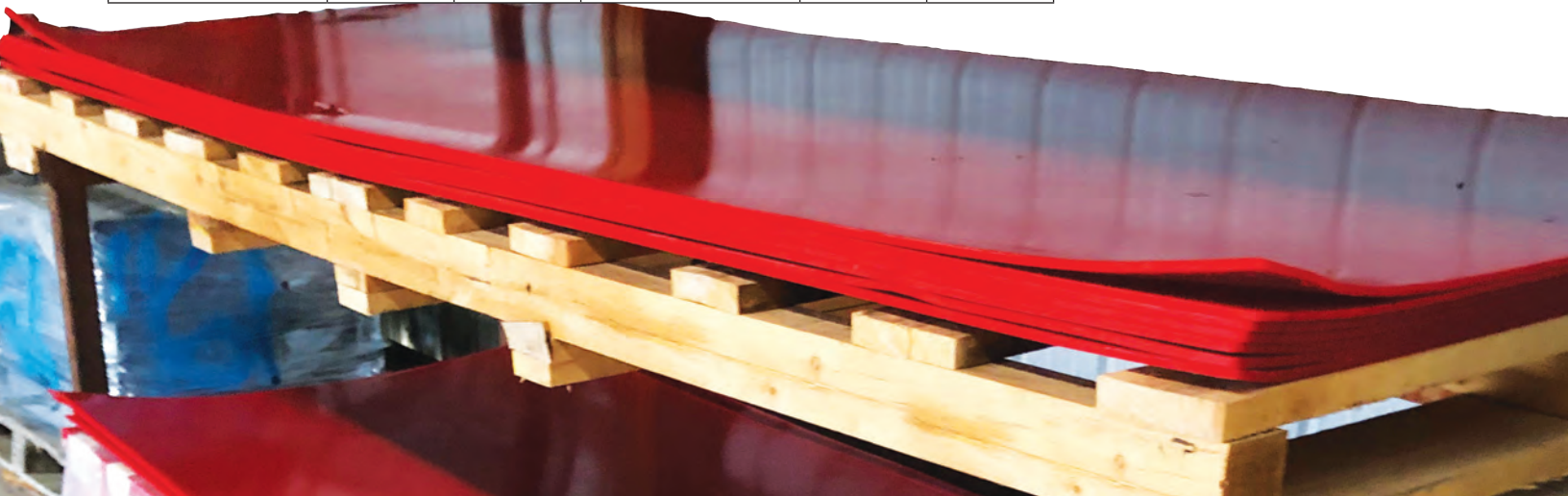
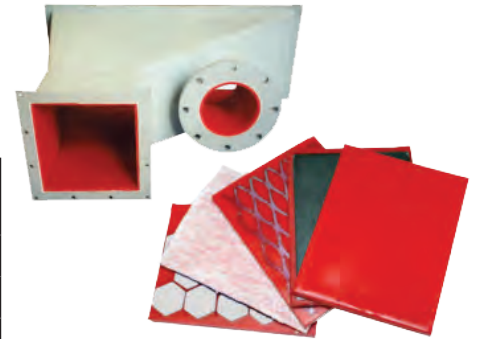
PART NUMBER	THICKNESS	SHEET SIZE	S/P PER SHEET
UHMW18	1/8"	4' x 10'	
UHMW14	1/4"	4' x 10'	
UHMW12	1/2"	4' x 10'	



KRYPTANE URETHANE

- The absolute best in urethane lining, red in color
- Used to line spouts, distributors, chutes, gates and any area of high wear or impact
- Wear life of 300-400 percent over other urethane products
- Available in thicknesses of 3/16" and greater
- Available in plain, fabric or expanded metal back
- Custom cut sizes available – Call for price and availability

PART NUMBER	THICKNESS	SHEET SIZE	TYPE	WEIGHT #	S/P PER SHEET
KUPB14	1/4"	4' x 10'	PLAIN BACK	54	
KUEMB14	1/4"	4' x 10'	EXP. METAL BACK	88	
KUEMB516	5/16"	4' x 10'	EXP. METAL BACK	125	
KUEMB38	3/8"	4' x 10'	EXP. METAL BACK		
KUEFB14	1/4"	4' x 10'	FABRIC BACK		



BELTING AND UHMW FLIGHTS

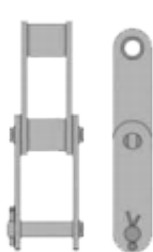
BELTING

- Rubber or PVC Elevator Belting – Slit and punched to your order
- Pattern or Crescent Top Conveyor Belt
- Call for pricing
- Non-stock items

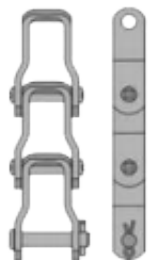
**CALL FOR
COMPETITIVE
PRICING**



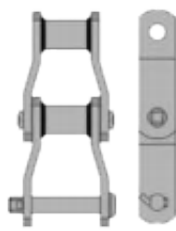
GRAIN HANDLING CHAIN ASSEMBLIES



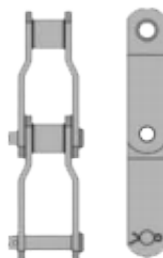
81XHH



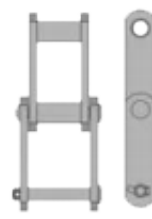
AL88XH



WH78



MXS2124



SS102B



142 MM

DRAG CONVEYOR FLIGHTS



GRAIN DISTRIBUTORS

- For Cable Control add \$625.00
- For Hot Dipped Galvanized (x 1.55)
- For Lined Inner Spout (x 1.15)
- For Lined Outlets (x 1.15)
- Distributors below are priced FOB Ohio Factory
- Prices also available for CMF, Creamer, Grain Belt, Honeyville, Rapat and Schagel distributors



45 DEGREE FLATBACK

- Price includes Pipe Control and Inner Ring

	DIAMETER					
NUMBER OF OUTLETS	6"	8"	10"	12"	14"	16"
4						
6						
8						
10						
12						

45 DEGREE FULL ROUND

- Price includes Pipe Control and Inner Ring

	DIAMETER					
NUMBER OF OUTLETS	6"	8"	10"	12"	14"	16"
4						
6						
8						
10						
12						

SEED AND CHEMICAL HANDLING EQUIPMENT



**STAINLESS STEEL
BELT
CONVEYOR**

CONVEY-ALL™



**TRANSFER
HOPPERS ▲**



**RE-BAGGING
SYSTEMS ▲**



**TRANSFER
CONVEYORS ▶**

**TRUCK MOUNTED
SEED TENDERS ▼**



MERIDIAN®

**SMOOTH
WALL BINS AND
STAINLESS STEEL
LIQUID TANKS**



BELT CONVEYORS AND AUGERS



CONVEY-ALL™

OVERHEAD SHUTTLE CONVEYORS



HOPPER BOTTOM CONVEYORS

CONVEY-ALL™ HIGH CAPACITY TUBE CONVEYORS



GENTLE FLOW CONVEYORS



Farm King AUGERS



TOWERS, CATWALKS, DRAG CONVEYORS



TOWERS AND CATWALKS

BOTTOM BOX TRUSSES

- Standard widths from 27" to 60"
- Maximum standard span of 55'
- Lengths built to order
- Standard 20', 15', 10', 5' sections
- Welded construction, bolt on hand-rails
- Custom spans to your specs

WALK-THRU TRUSSES

- Standard widths from 72" to 120"
- Maximum standard span of 190'
- Lengths built to order
- Standard 40', 20' sections
- Welded side construction, bolt in bottom and top
- Custom spans to your specs

HANDRAIL TRUSSES

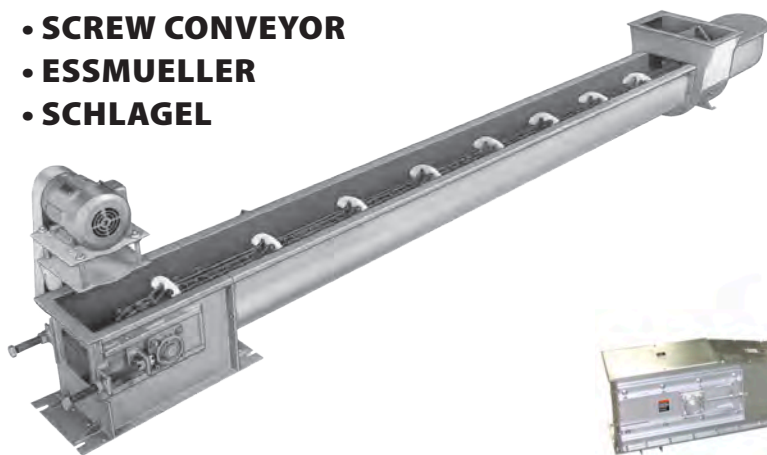
- Standard widths from 30" to 108"
- Maximum standard span of 125'
- Lengths built to order
- Standard 20', 15', 10', 5' sections
- Welded side construction, bolt in bottom
- Custom spans to your specs

CUSTOM TRUSSES

- Built to your operation's unique needs
- Spans to your order
- Widths to your specs
- Openings to your request

ROUND AND FLAT BOTTOM DRAG CONVEYORS

- SCREW CONVEYOR
- ESSMUELLER
- SCHLAGEL



- ESSMUELLER
- HONEYVILLE
- SCHLAGEL
- SWEET
- YORK



DIAPHRAGM TYPE LEVEL INDICATORS

FLEXIBLE DIAPHRAGM ACTUATES A MICRO SWITCH WHICH CAN SET OFF A LIGHT OR BUZZER, START OR STOP A MOTOR

- Low cost indicators for granular, free flowing materials
- Eliminate clogged conveyors, choked elevators
- No "up the ladder checks"

GENERAL PURPOSE - NON-HAZARDOUS APPLICATIONS

PART NUMBER	DESCRIPTION	WEIGHT #	PRICE
BM45RHT	Silicone Diaphragm Inside Mount	2.3	
BM45FHT	Silicone Diaphragm Outside Mount	2.3	

- Rotary indicators available upon request



SPECIFICATIONS

Housing: Rugged die-cast aluminum
Diaphragm: Neoprene (std.), Teflon, Silicone
Switch: Snap-action, 15 amp, 125, 250 or 480 VAC
Mounting Plate: 16ga galvanized steel
Dimensions: 6-5/8" wide, 7" high, 2-5/8" deep
Shipping Wt: 2-1/2 lbs.

LevALERT® BIN LEVEL INDICATOR



The LevALERT indicator shows the level of material in any bin, hopper or tank while everyone is safely on the ground. Whether filling once a year or several times a day, LevALERT's Visible Level Indication saves you time, labor and money while providing valuable level information.

HOW IT WORKS: As material reaches the LevALERT Visible indicator, it pushes against the activator which changes color from **BLACK** (empty) to fluorescent **YELLOW** (indicating material present).

- **Application:** Any Granular Bulk Solid from powder to pellets with bulk density between 15 and 100 lbs/ft³
- **Easy Installation:** LevALERT mounts from outside vessel
- **Highly Visible:** Fluorescent yellow indication is visible from more than 200 feet, day or night
- **No Power Required:** LevALERT's operation is completely mechanical and does not require power
- Optional Indicating Sensor available for Alarm or Remote Indication



GRAIN GAUGE™ level monitor is a proven and cost effective method to accurately monitor the levels of material in your bin.

As the material in your bin reaches the Grain Gauge™ level device, it pushes against the activator, turning the color from black to green—even glowing in the dark at night for clear visibility. When the material unloads it will return to black.



PRICED AT

GRAIN DRYING AND AERATION

FULL ROUND AERATION DUCT

- Galvanized, Riveted Construction
- 12" thru 36" diameter - 18ga thru 14ga



HALF ROUND AERATION DUCT

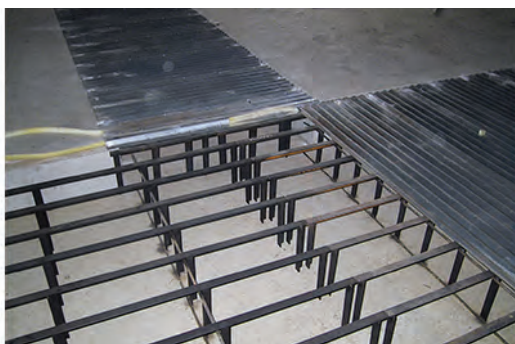
- Galvanized Construction
- 25-1/2" – 48" diameters



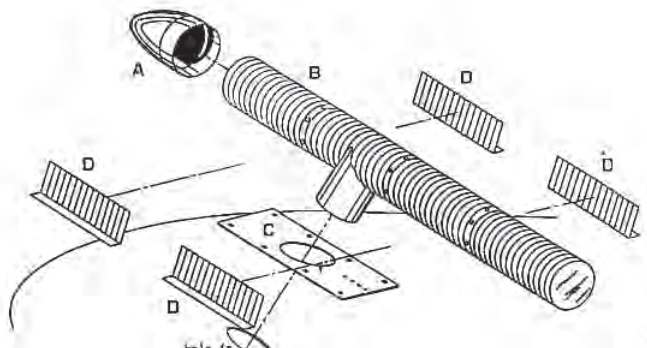
FULL ROUND CORRUGATED, HIGH DENSITY POLYETHYLENE PIPE



FLUSH FLOOR SHEETS AND SUPPORTS



HOPPER TANK AERATION PACKAGE



VANE AXIAL FANS

- 12" thru 28" diameter
- 1/2 HP thru 15 HP
- Single or Three Phase



CENTRIFUGAL FANS

- 5 HP thru 100 HP
- Single or Three Phase



ROOF VENTS



ROOF EXHAUSTERS AVAILABLE, CALL FOR PRICING

TRAPADAPT & DRIVEMAXX

TRAPADAPT™
TRAPADAPT™
TRAPADAPT™
TRAPADAPT™



AGRICULTURE DIVISION



OPENS MANUAL TRAPS FOR YOU – FAST AND EASY

A039FL-0819

TrapAdapt™ does the work of an electric hopper opener for you, saving time and helping elevator employees be more efficient. Time equals money, and this aluminum-handled kit speeds up work. The handle has a forward-and-reverse switch built right in and weighs just 21 pounds for easy lifting.

CALL FOR PRICE



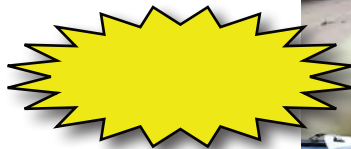
By Shur-Co®



AGRICULTURE DIVISION

Key Features

- SMART™ Remote Operation
- 12-Volt Electric Shur-Co® Motor
- Sealed Receiver Box
- SMARTwire™ Connections
- Independent 2-Wheel Dual-Motor Drive Kit
- Manual LiteALL™ LED Work Light with Magnetic Base
- Compatible With Your Existing Shur-Co® SMART™ Remote
- The Perfect Product To Pair With Your Shur-Co® ProTrap® or AutoTrap™
- For 10" and 13" swing-away augers



SUMP GUARDS & GRAIN BIN SWEEPS



SUMP SAVER/SUMP GUARD

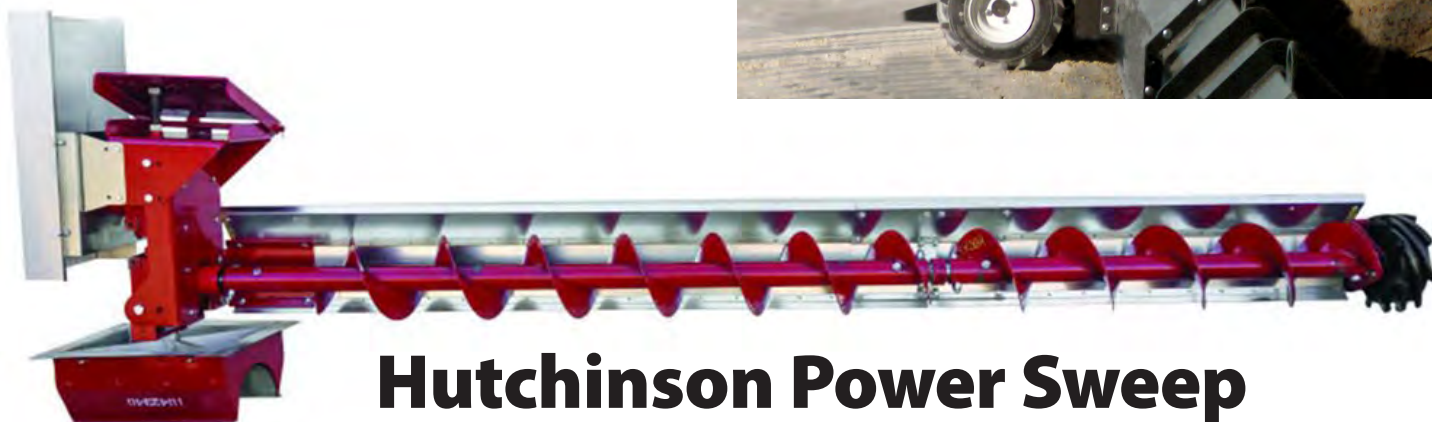
- Innovative design means you can easily unplug your grain bin from the safety of your tractor seat!
- Installation is quick and easy as blockages are broken up in seconds
- The Mighty Mini from Sump Saver effortlessly slices and crushes obstacles approaching the grain sump, safely restoring grain flow without ever stepping foot inside the bin.

CALL FOR PRICING



DAAY BIN PADDLE SWEEP

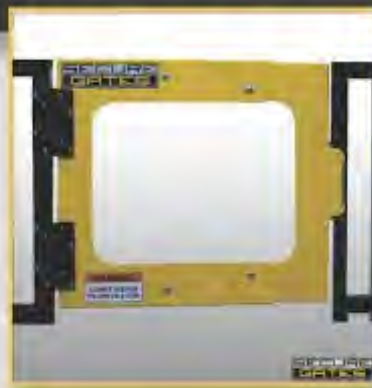
- Rubber Paddles
- Moves grain gently & evenly to the sump.
- Safe solution for unloading farm and commercial bins
- 5,500 bushel per hour maximum capacity
- Manufactured for 15' to 105' grain bins



Hutchinson Power Sweep



SAFE . SECURE . COMPLIANT



With 14" to 48" of adjustability, Secure Gates offer the very best self-closing gates. Why? Because our gates cover the largest opening distance of any swing gate on the market and we have designed them to mount anywhere in minutes. What does this mean for you? This means an easy and universal installation. Secure Gates were created to reduce the complexity and time spent on the typical gate installation. Mount your Secure Gate using only a drill, tech screws, and just a few hand tools. (No welding, cutting, or drilling will be required for this install!) Don't want to install Secure Gates yourself? Contact us and we can install it for you!

PART NUMBER	SIZE	GATE OPENING	GATE MATERIAL - FINISH	PRICE
SG1421SG	Small	14"-21"	Steel Yellow Standard Gate	
SG2132SG	Medium	21"-32"	Steel Yellow Standard Gate	
SG3248SG	Large	32"-48"	Steel Yellow Standard Gate	
SG1421FH	Small	14"-21"	Full Height Yellow Steel (Kick plate)	
SG2132FH	Medium	21"-32"	Full Height Yellow Steel (Kick plate)	
SG3248FH	Large	32"-48"	Full Height Yellow Steel (Kick plate)	
SG141SSSG	Small	14"-21"	Stainless 304 Standard Gate	
SG2132SSSG	Medium	21"-32"	Stainless 304 Standard Gate	
SG3248SSSG	Large	32"-48"	Stainless 304 Standard Gate	
SG1421SSFH	Small	14"-21"	Stainless 304 Full Height (Kick Plate)	
SG2132SSFH	Medium	21"-32"	Stainless 304 Full Height (Kick Plate)	
SG3245SSFH	Large	32"-48"	Stainless 304 Full Height (Kick Plate)	

SUPER STRUCTURES & SPEEDY PIT

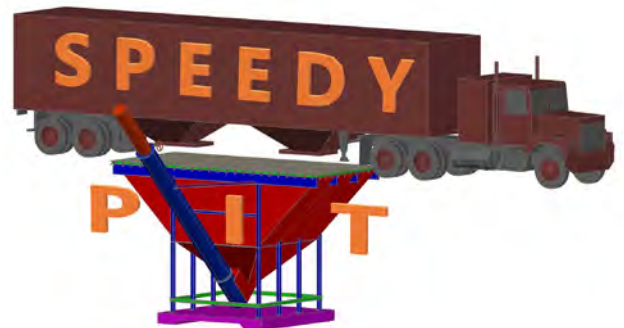
CUSTOMIZABLE SUPER STRUCTURES

- Our Super Structures are an engineered bolt together design with weld on cross members.
- Offered in multiple sizes, capacities and orientations.
- Each structure is a custom quote/build.

NEW



**CALL FOR PRICING
AND SIZES**



BUCKET ELEVATORS



ESSMUELLER

Honeyville
METAL, INC. TOPEKA, IN

Lambton



Universal Industries
Since 1906... Universal Industries, Inc.

BUCKET ELEVATORS

- Capacities to 40,000 BPH
- Available in Painted, Galvanized and Stainless Steel
- Call for specifications and pricing



BUCKET ELEVATOR DRIVES

TO QUOTE YOUR DRIVE PLEASE PROVIDE THE FOLLOWING:

Horsepower, RPM required, diameter of the head and motor shafts, Class I (uniform load, three to ten hours of service) or Class II (heavy load, ten hours of service or more)

WE WILL ESTIMATE CAPACITY AND RECOMMEND HP REQUIREMENTS:

Please provide cup size, and spacing and diameter of the head pulley



Universal Industries
Since 1906... Universal Industries, Inc.

UNIVERSAL BUCKET ELEVATOR

**WE ARE DISTRIBUTORS FOR
ALL UNIVERSAL INDUSTRIES
EQUIPMENT AND PARTS.**

Call for specifications and pricing



GRAIN CLEANERS & DUST COLLECTION



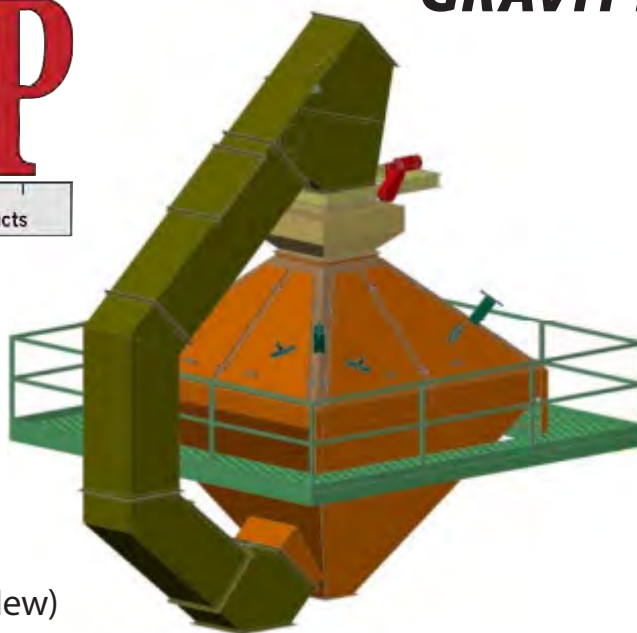
DUST COLLECTORS

Cleaning dust from your workplace's air is vital to helping reduce employee exposure to potentially dangerous levels of contaminants. Proper dust collection can mean increased visibility and reduced costs for the cleanup and maintenance of your facility. It also helps you comply with health and air emission standards, reduces the possibility of causing a nuisance for your neighbors and can even help you recover valuable by-products from the air.



MODELS:

- 5,000 BPH
- 10,000 BPH
- 15,000 BPH
- 25,000 BPH
- 50,000 BPH
- 80,000 BPH (New)



GRAVITY FLOW SCREENERS

KEY FEATURES:

- Quick Change Screens.
- Adjustable flow conditioning inlet.
- Easy access panels.
- Positive door latch system.
- Custom lining options.
- Custom screen configurations/ sizes



A WORLDWIDE MANUFACTURER OF:

**High Quality, Technologically Advanced
Material Handling & Electronic Components**

**WE ARE DISTRIBUTORS FOR ALL 4B EQUIPMENT AND PARTS.
CALL FOR SPECIFICATIONS AND PRICING.**



**WATCHDOG SUPER ELITE
HAZARD MONITORING SYSTEM**



ADB SENSOR TESTER



WHIRLIGIG SPEED SWITCHES



**M800 ELITE
SPEED SWITCH**



**TOUCHSWITCH
BELT ALIGNMENT HOLE SAW**



TOUCHSWITCH

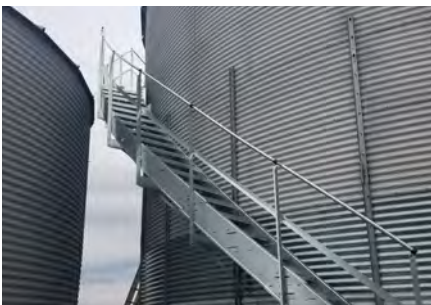
GREENE GALVANIZED STAIRS



MAN WALK AND SUPPORT TOWERS



ROOF STAIRS AND HAND RAILS



SIDE WALL STAIRS

EASY STEP SIDEWALL STAIRS

Designed for bins with a 24' or larger diameter. With a 24" wide step, our stairs get you comfortably to the eave of your bin.

ORIGINAL SIDEWALL STAIRS

Designed for bins with an 18'-105' diameter, featuring an embossed stair tread for a clean, slip-resistant surface.

SIDEWALL GATES

The A-Series Sidewall gate comes complete with the Wall Mount and lockable Gate Latch. Choose your finish of galvanized or painted yellow gate.



ROOF SAFETY PACKAGES

EASY STEP ROOF LADDER HANDRAIL

The Easy Step Roof Ladder Handrail provides a simple and economical way to provide safety when traveling from the eave to the fill hole of your bin.

ORIGINAL ROOF STAIRS

A step up from our Original Roof Ladder Handrail, the Original Roof Stairs, complete with handrail, provides you with a more rigid walking surface for getting from your eave to your fill hole.



COMMERCIAL PACKAGES

A-SERIES FOUNDATION DECK

A-SERIES ROOF DECK

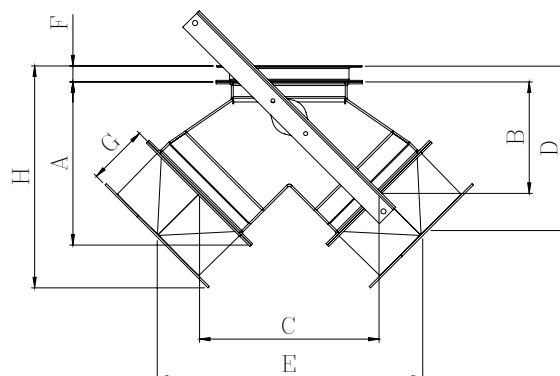
A-SERIES ROOF STAIRS

A-SERIES SIDEWALL DECK

A-SERIES GATES

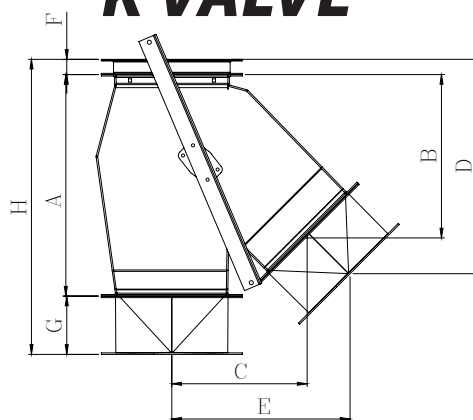
All pan valves, square to round transitions, round to round transitions, overflow valves, grain retarders, flat top adapters, and hand slide gates are currently stocked with a painted finish. We are transitioning to galvanized products and the catalog prices are for the new items. The remaining painted products will be sold at the prices listed in the 2017 Catalog.

Y VALVE



SIZE (A)	A	B	C	D	E	F	G	H
6"	10"	7"	10"	10"	17-7/16"	1-3/8"	5-1/4"	15-1/8"
8"	11-3/8"	7-5/8"	11-7/8"	11-3/8"	19-1/4"	1-3/8"	5-1/4"	16-1/2"
10"	14"	9-5/8"	15-1/2"	14"	23"	1-3/8"	5-1/4"	19-1/8"
12"	16-5/8"	11-1/4"	16-1/2"	16-3/5"	25-5/16"	1-5/8"	6-1/4"	22-5/8"
14"	18-1/2"	12-1/4"	18-1/2"	18-5/9"	27-5/16"	1-5/8"	6-1/4"	24-5/8"

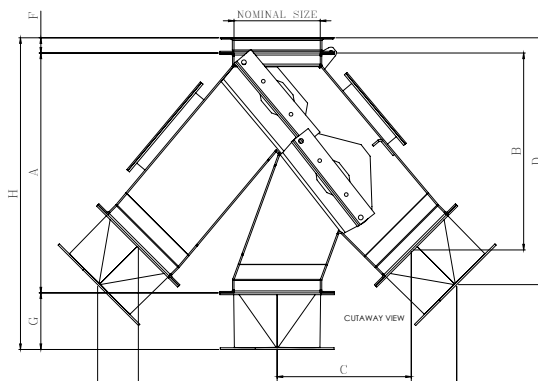
K VALVE



SIZE (A)	A	B	C	D	E	F	G	H
6"	13"	13"	9-3/8"	8-1/8"	11-3/4"	1-3/8"	5-1/4"	19-5/8"
8"	16"	16"	11-3/8"	9-3/4"	13-5/16"	1-3/8"	5-1/4"	22-5/8"
10"	19-7/8"	19-7/8"	14-1/4"	12-1/4"	16-7/16"	1-3/8"	5-1/4"	26-1/2"
12"	23-3/4"	23-3/4"	17"	14-5/8"	19-5/8"	1-5/8"	6-1/4"	31-5/8"
14"	27-3/4"	27-3/4"	19-3/4"	17"	21-5/16"	1-5/8"	6-1/2"	35-5/8"

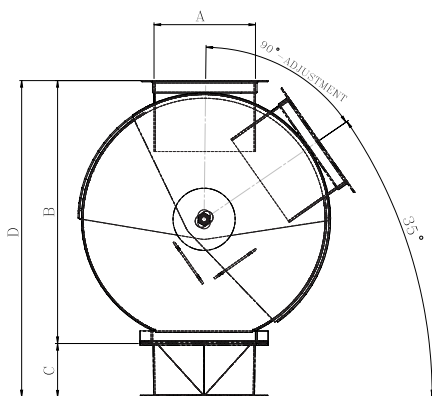
PRODUCT SPECIFICATIONS

THREE WAY VALVE



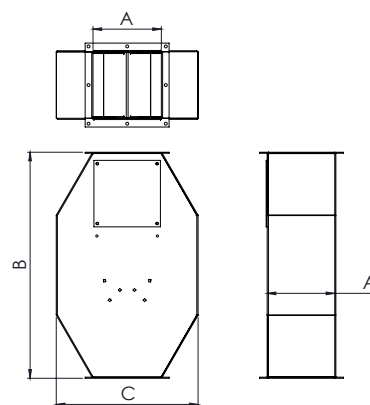
SIZE (A)	A	B	C	D	E	F	G	H
6"	17-1/2"	6"	8-1/8"	12-1/4"	13-1/2"	1-3/8"	5-1/4"	24-1/8"
8"	22-1/4"	8"	13-1/8"	18-1/4"	17"	1-3/8"	5-1/4"	29"
10"	27-3/4"	10"	17-1/4"	23"	20-5/8"	1-3/8"	5-1/4"	34-7/16"
12"	29"	12"	15-5/8"	23-1/4"	20-3/8"	1-5/8"	6-1/4"	37"
14"	31-3/8"	14"	16-1/2"	24-7/8"	22-1/4"	1-5/8"	6-1/4"	39-3/8"
16"	38-5/8"	16"	21"	31-1/4"	27-3/4"	1-5/8"	6-1/4"	50-1/4"

ADJUSTABLE CUSHION BOX



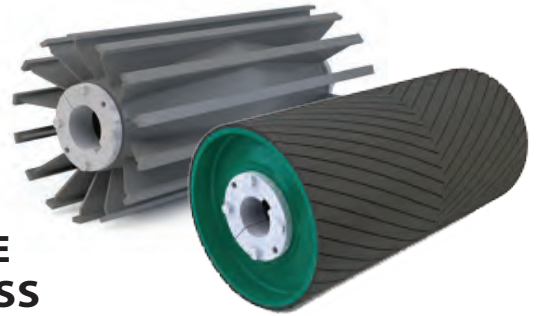
SIZE (A)	B	C
6"	20-5/8"	7-3/8"
8"	22-3/8"	9-3/8"
10"	26"	11-3/8"
12"	30-7/8"	13-3/8"
14"	31"	15-3/8"
16"	38-3/4"	17-3/8"

FLOW RETARDER



SIZE (A)	B	C
6"	26"	13"
8"	32"	17"
10"	34"	21"
12"	37"	25"
14"	40-1/2"	29"

PULLEYS AND COMPONENTS



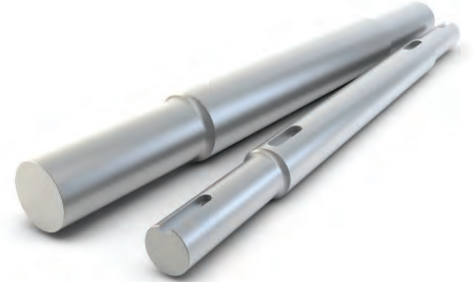
PULLEYS

**DRUM • WING
MACHINED TUBE
ENGINEERED CLASS
SINGLE DISC ELEVATOR**



PULLEY LAGGING

**VULCANIZED • BOLT-ON
REPLACEABLE**



SHAFTING

PILLOW BLOCKS

TAKE-UP FRAMES

CONVEYOR

IDLERS

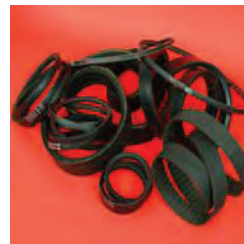
BUSHINGS, HUBS

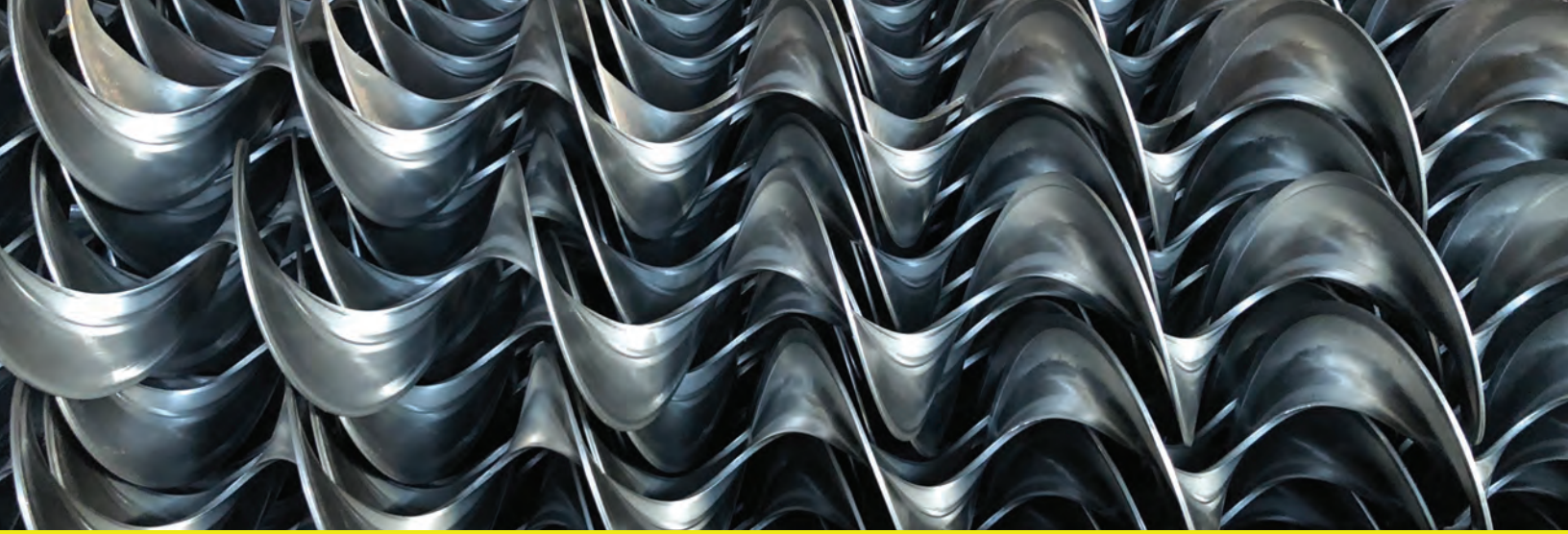
FLEXIBLE METAL HOSE

ZOLLER PUMP

BELTING

CHAIN & SPROCKETS





Perry Equipment

P: (765) 362-4495 F: (765) 364.9655 | www.perry-equip.com