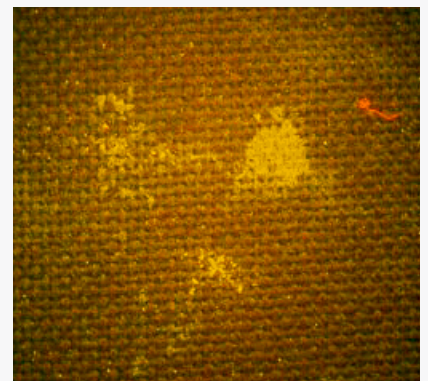
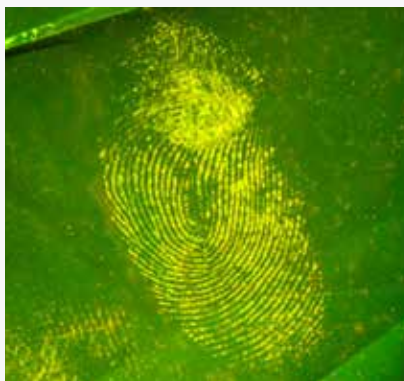


PAGLAB MSA-810

The professionals' choice

The ultimate light source for trace evidence investigation

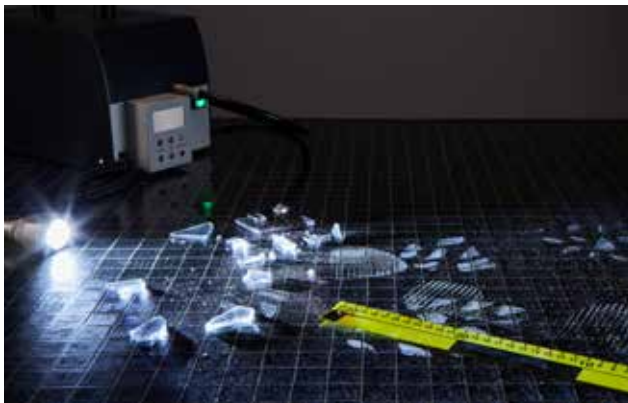




The PAGLAB MSA-810 is brilliance in a box, giving professional laboratories everything they need in one dependable light source.

Applications

- Biological stains
- Latent fingerprints
- Blood other body fluids
- Hair, paint chips and fibres
- General search for evidence
- Second-treated fingerprints enhancement



Benefits

- ✓ Designed to be operated in the laboratory or at the crime scene
- ✓ Convenient remote control
- ✓ Lightweight carrying case
- ✓ Compact
- ✓ Easy to use
- ✓ Motorized filter changer

Technical Specification

- Basic housing PAGLAB MSA-810 with handle, connection of remote control unit, extension for telescope and fixation for light guide
- Motorized filter changer via remote control
- Detachable remote control box (magnetic) with LCD display for filter values, light intensity control and ON/OFF shutter function
- Liquid light guide $d = 5 \text{ mm}$, 2.5 m long with possibility to fix various accessories like shape converter, condenser for larger spot 30° , etc.
- 10 wavelengths with spectra range white light, UV purple, blue, cyan and green to yellow
- 4 Protection goggles (UV, orange, yellow, red)
- Extension for telescope handle up to 70 cm, with light guide fixation
- Condenser with quartz optics 15° for spot size of 25 cm at a distance of 1 m from the object and 12.5 cm at 50 cm
- Camera filter, $d = 58 \text{ mm}$, orange 530 nm, yellow 495 nm and red 590 nm
- AC 100 – 240 V, 50 – 60 Hz mains connection
- Weight: approx. 5.2 kg
- Dimensions: approx. 170 mm width x 220 mm height x 265 mm depth

We reserve the right to make modifications as a result of technical developments. Illustrations, descriptions and extent of delivery are therefore not binding.

Projectina AG
Dammstrasse 2
CH-9435 Heerbrugg / Switzerland



projectina[®]