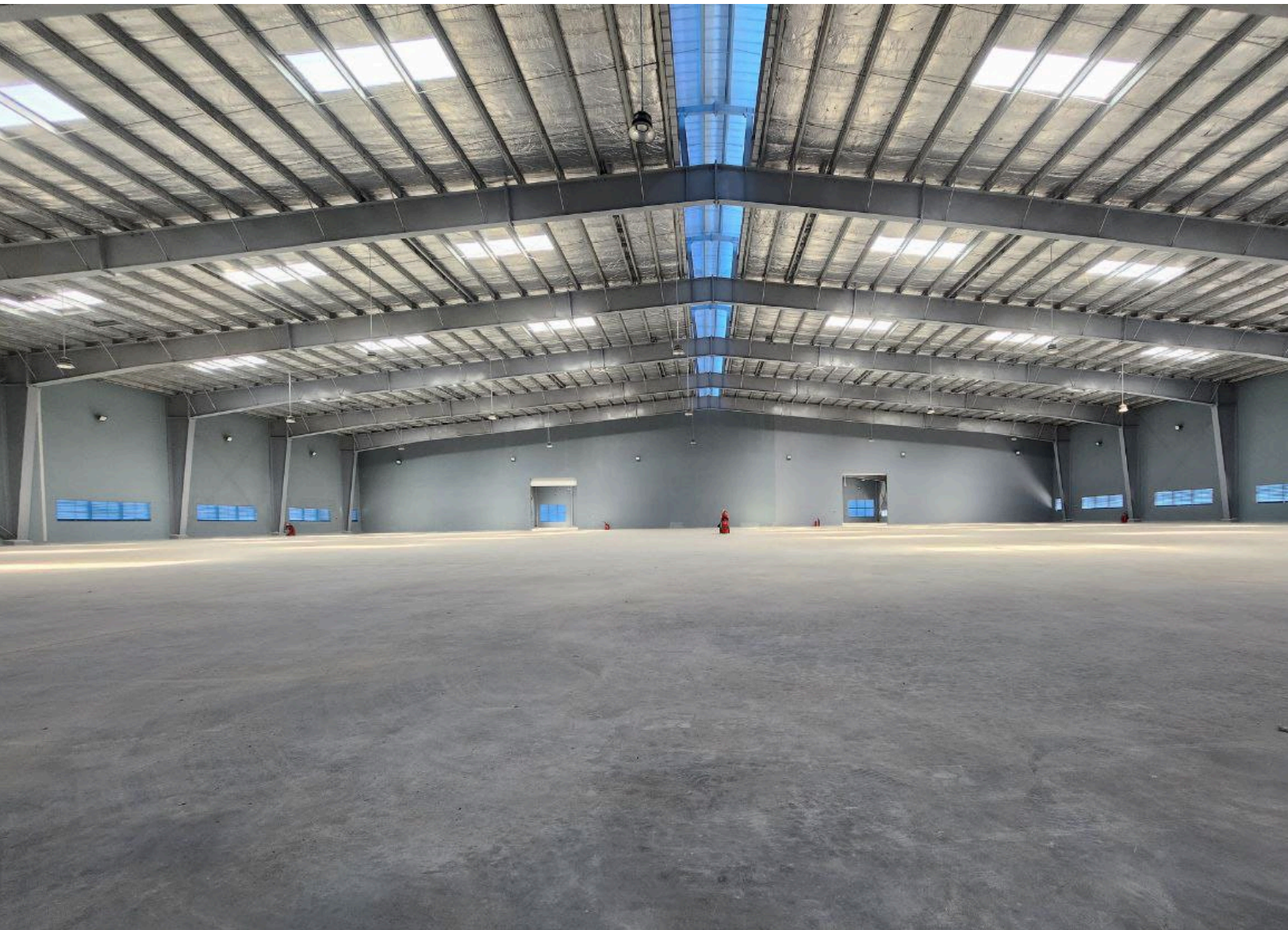


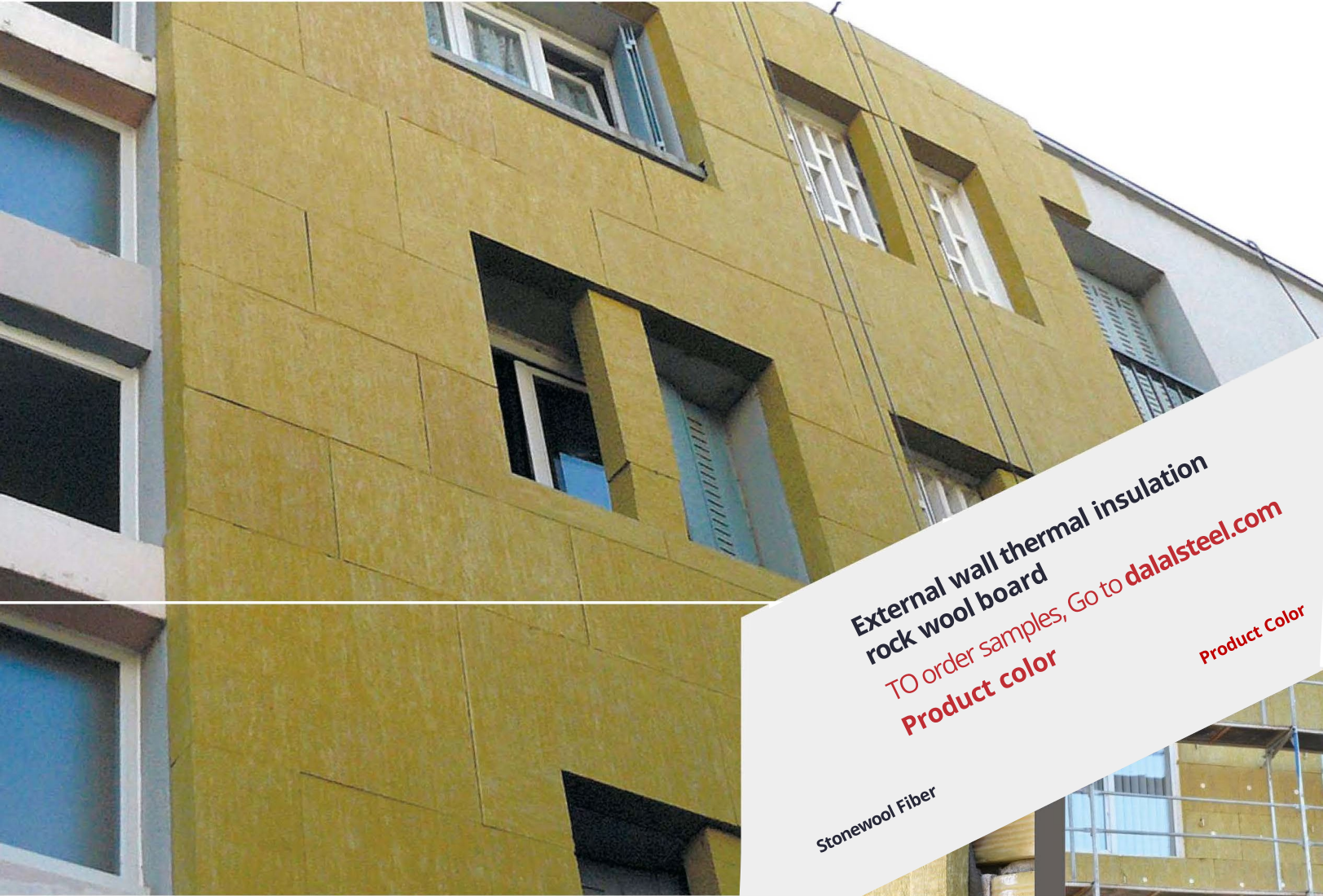


Product Catalog



Glass wool insulation | Rock wool Insulation | Acoustic ceiling & wall | Other thermal products | Import & export business

External Wall Thermal Insulation Rock Wool Board



External wall thermal insulation
rock wool board
TO order samples, Go to dalalsteel.com
Product color

Stonewool Fiber

FEATURES AND BENEFITS

- Natural inorganic material
- Class A fire resistance
- Great moisture resistance
- Excellent mod resistance, good chemical stability
- Aging resistance, and corrosion resistance

APPLICATIONS

- Used in external thermal insulation composite systems. It is fixed to the substrate by anchor and/or adhesives. One layer of base coat reinforced with glass fiber mesh. Finally top layer cover of base coat provides protection for the system against weathering and mechanical stress and also as a decorative finish.



Product Information

DSI rock wool boards are non-combustible with a melting point of approximately 1000°C. They are specially formulated to provide fire protection, thermal insulation and sound reduction/absorption. No CFCs, HCFCs, HFCs or asbestos are used in the manufacture of UET rock wool products.

UET external wall thermal insulation rock wool board is an environmentally-friendly and dimensionally stable product. It has high compression and tensile strength, low thermal conductivity, good water repellency and low water absorption, is crack resistant and requires little maintenance.

Available Forms

Rigid Board

Available Size

Product Code	Density (kg/m ³)	Thickness (mm)	Width (mm)	Length (mm)	Packing (pcs/PKG)	PKG/40'HQ (No#)
DSI EXWR12040-160	120	40-160	600	1200	3-10	Loading Qty,
DSI EXWR14040-160	140	40-160	600	1200	3-10	Please consult

Consult your local sales representative for other available sizes and specification

Physical Properties Of DSI exwr 120100

Tested Content	Tested Value	Tested Method
Density	120kgs/m ³	GB/T 5480.3
Thickness	100mm	GB/T 5480.3
Thermal Conductivity (W/mK)	0.036	ASTM C 518 (C 177)
Average NRC	1.05	ASTM C423
Maximum Service Temperature	750°C	GB/T 17430, GB50264
Recommended Service Temperature	650°C	ASTM C411-05, ASTM C447-03, GB50264
Compression Strength (kPa)	55	EN 826
Tensile Strength (kPa)	21	EN1607
Non-Combustibility		
Flame Diffusivity	50	ASTM E84-10
Flame Propagation:	25	ASTM E84-10
Fire Performance	Class A1	GB 8624, EN13501-1, BS 476 Part4
Water Vapor Sorption (% by Weight)	1%	ASTM C1104/1104M
Water Vapor Sorption (% by Volume)	1%	ASTM C1104/1104M
Water Repellency (option available)	>99%	GB/T10299

Packaging

Rock wool board is wrapped by a shrink film. It's easy to load and un-load with forklift to save labor cost and save storage space.

Storage & Transport

Store insulation indoors. Store product under cover and in dry conditions. Handle with care, Products will be damaged if subject to sharp or heavy impact.

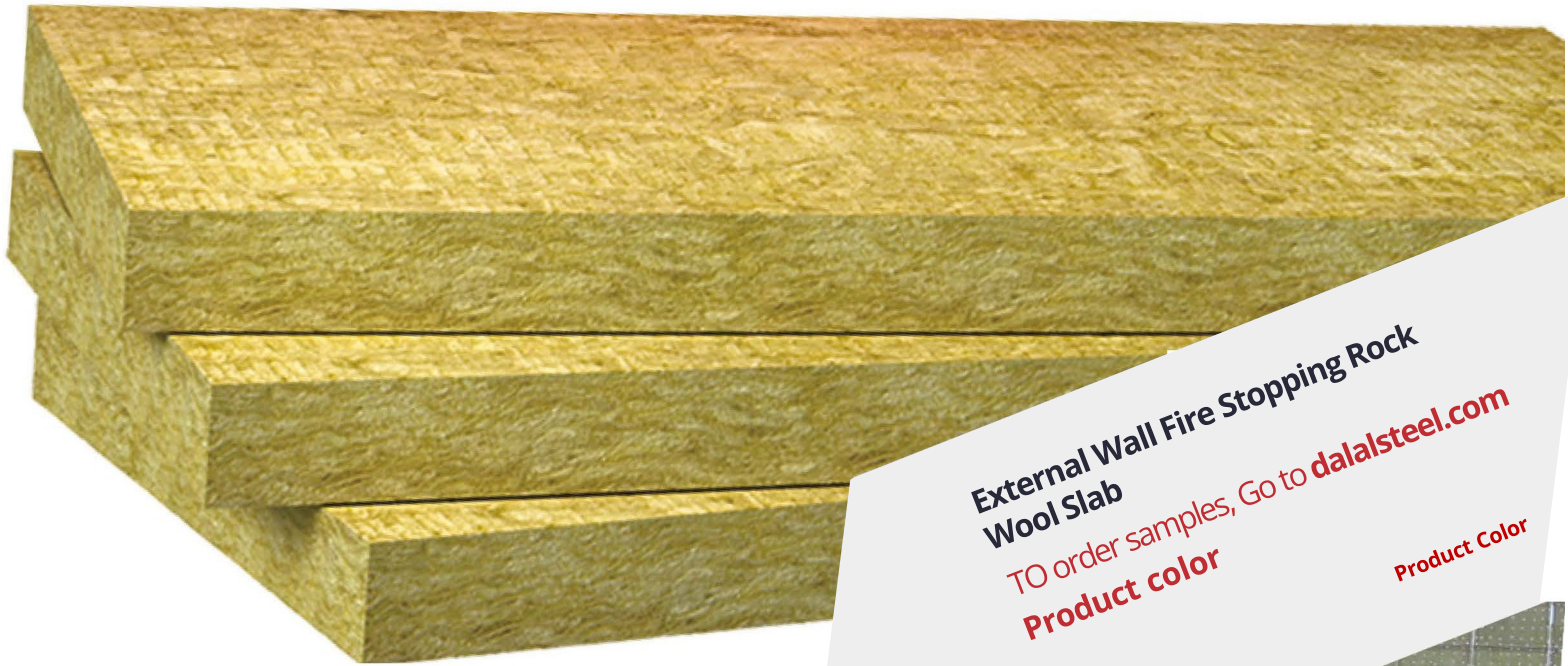
Quality Management & Specification Compliance

ISO 9001: 2008, ISO 14001:2004
GB/T 17430, GB50264, ASTM C411, ASTM C447-03, ASTM C423, GB50264

Fire performance

Classified as Euro class A1 to STN EN 13501-1: 2007 and FM Certificate

External Wall Fire Stopping Rock Wool Slab



**External Wall Fire Stopping Rock
Wool Slab**
TO order samples, Go to dalalsteel.com
Product color

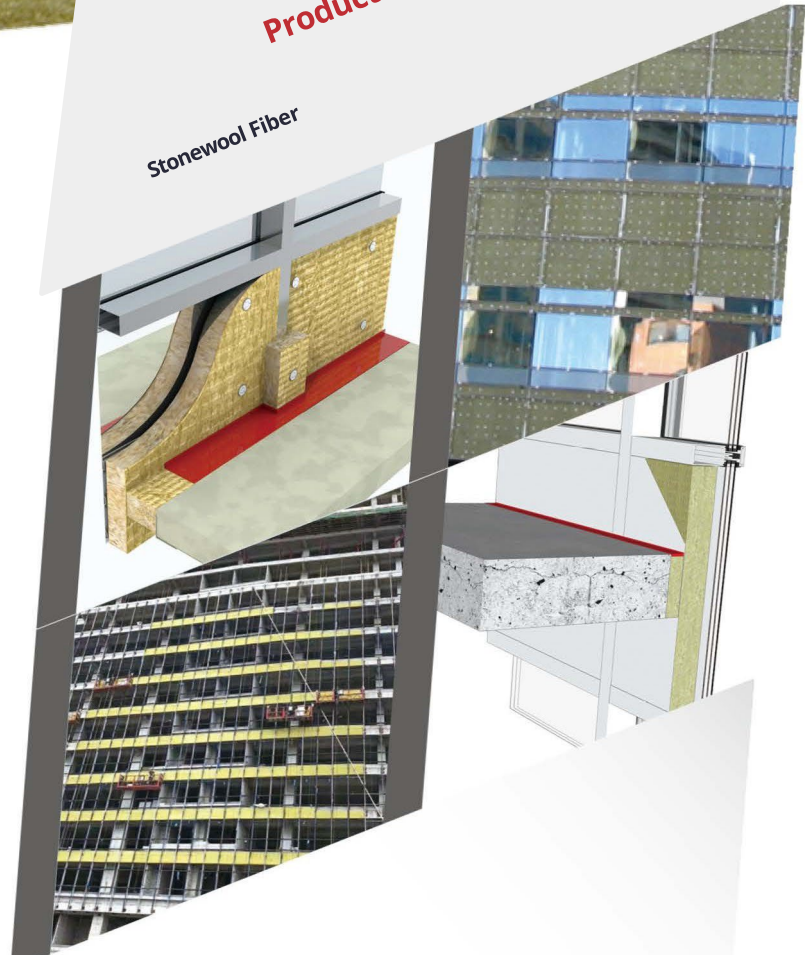
Stonewool Fiber

FEATURES AND BENEFITS

- Excellent thermal insulation
- Outstanding acoustic protection
- Non-combustible - Euro class A1
- Easy to handle, and easy to cut to suit intricate shapes

APPLICATIONS

- It is used for filling perimeter gaps between concrete floor slabs and exterior wall systems, between firewalls and ceiling slabs, and around conduit pipes and duct openings through walls and floorslab.



Product Information

DSI external wall fire stoping rock wool slab is a lightweight, semi-rigid or rigid stone wool insulation that provides superior fire resistance and sound control. UET-ROOF rock wool slab is FM and Intertek approved as a forming material for numerous firestop systems. This product is designed to fill perimeter gaps between concrete floor slabs and exterior wall systems, between firewalls and ceiling slabs, and around conduit pipes and duct openings through walls and floor slabs.

Available Forms

Semi-Rigid or Rigid Board

Available Size

Product Code	Density (kg/m3)	Thickness (mm)	Width (mm)	Length (mm)	Packing (pcs/PKG)	PKG/40'HQ (No#)
DSI FSR 12075-200	120	75-200	600	1200	2-5	Loading Qty, Please consult
DSI FSR 15075-150	150	75-150	600	1200	2-5	
DSI FSR 18075-120	180	75-120	600	1200	3-5	
Consult your local sales representative for other available sizes and specification						

Physical Properties Of DSI Fsr 120100

Tested Content	Tested Value	Tested Method
Density	120kgs/m ³	GB/T 5480.3
Thickness	100mm	GB/T 5480.3
Thermal Conductivity (W/mK)	0.036	ASTM C 518 (C 177)
Average NRC	1.05	ASTM C423
Maximum Service Temperature	750°C	GB/T 17430, GB50264
Recommended Service Temperature	650°C	ASTM C411-05, ASTM C447-03, GB50264
Compression Strength (kPa)	90	EN 826
Tensile Strength (kPa)	130	EN1607
Shear Strength (kPa)	65	EN12090
Non-Combustibility		
Flame Diffusivity	50	ASTM E84-10
Flame Propagation:	25	ASTM E84-10
Fire Performance	Class AI	GB 8624, EN13501-1, BS 476 Part4
Water Vapor Sorption (% by Weight)	:s:1%	ASTM C1104/1104M
Water Vapor Sorption (% by Volume)	:s;1%	ASTM C1104/1104M
Water Repellency (option available)	>99%	GB/T 10299

Storage & Transport

Store flat. Handle with care, especially on the edges and corners, which can be damaged if subject to sharp or heavy impact.

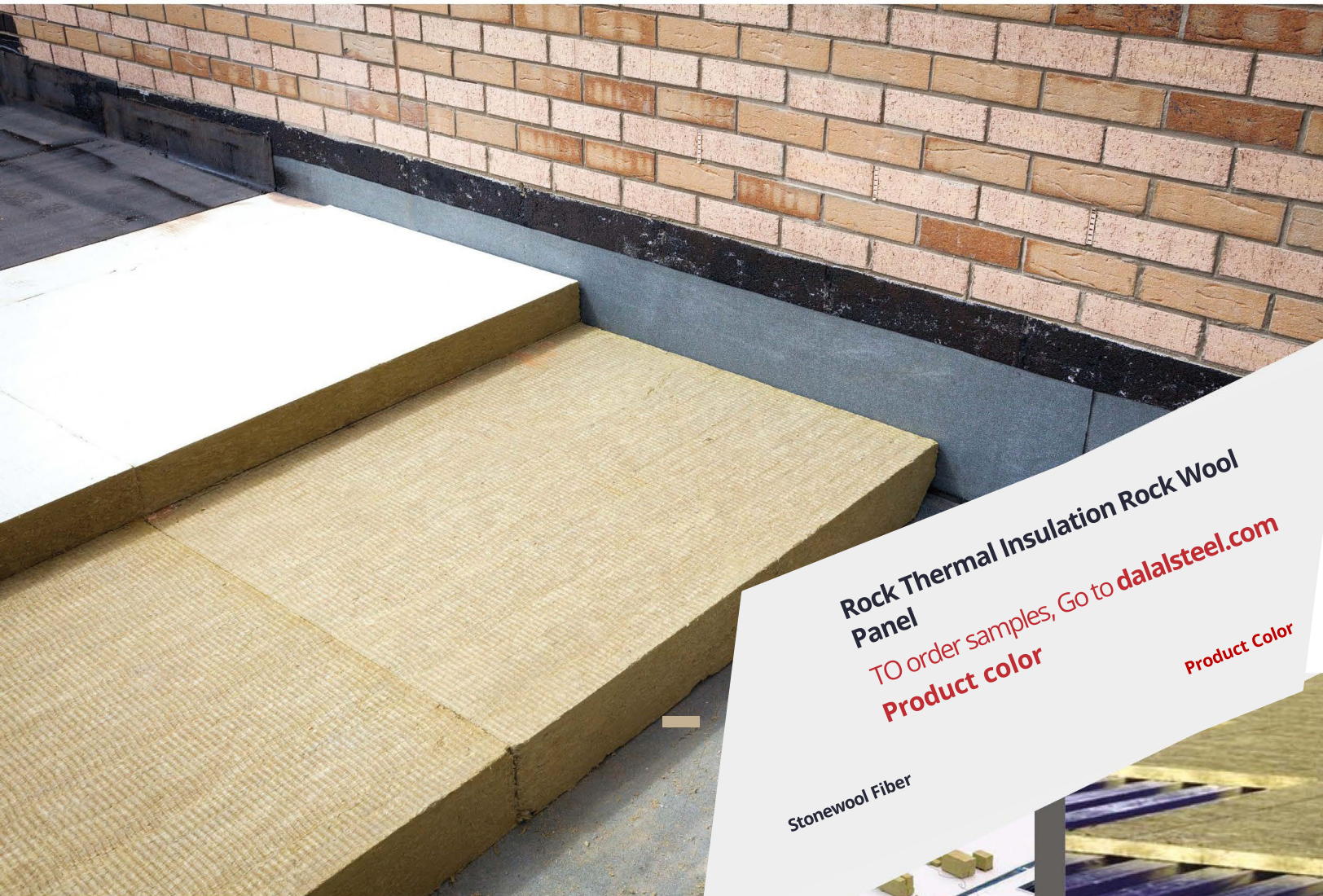
Quality Management & Specification Compliance

ISO 9001: 2008, ISO 14001:2004
GB/T 17430, GB50264, ASTM C411, ASTM C447-03, ASTM C423, GB50264

Fire performance

Classified as Euro class AI to STN EN 13501-1: 2007 and FM Certificate

Rock Thermal Insulation Rock Wool Panel



**Rock Thermal Insulation Rock Wool
Panel**
TO order samples, Go to dalalsteel.com
Product color

Stonewool Fiber

FEATURES AND BENEFITS

- Excellent acoustic reduction and absorption
- Improve comfort with thermal insulation
- Provides a long-term, consistent thermal performance
- Reduced installation costs as a result of insulation damage by water
- Non-combustible

APPLICATIONS

- Flat Steel Deck Roof and Flat Concrete Deck Roof System



Product Information DSI roof thermal insulation rock wool panel is a suitable substrate board for all low-slope roof decks and is compatible as the substrate for mechanically attached membrane systems. It has excellent acoustic properties. The product can be used as either a base layer of thermal insulation in an acoustic assembly with the top layer of a hybrid roof assembly with polyisocyanurate or other roof insulations.

Available Forms Rigid Panel

Available Size	Product Code	Density	Thickness	Width	Length	Packing	PKG/40'HQ
		(kg/m ³)	(mm)	(mm)	(mm)	(pcs/PKG)	(No#)
	DSI ROOF 12050-100	120	50-100	600	1200	4-9	Loading Qty,
	DSI ROOF 16050-75	160	50-75	600	1200	6-9	Please consult
	DSI ROOF 18030-50	180	30-50	600	1200	9-10	

Physical Properties Of DSI Roof 16050	Tested Content	Tested Value	Tested Method
	Density	160kgs/m ³	GB/T 5480.3
	Thickness	50mm	GB/T 5480.3
	Thermal Conductivity (W/mK)	0.Q35	ASTM C 518 (C 177)
	Average NRC	0.90	ASTM C423
	Maximum Service Temperature	750°C	GB/T 17430, GB50264
	Recommended Service Temperature	650°C	ASTM C411-05, ASTM C447-03, GB50264
	Compression Strength (kPa)	100	EN 826
	Tensile Strength (kPa)	206	EN1607
	Shear Strength (kPa)	70	EN12090
	Point Load Strength (Deform 5%) (kPa)	800	EN1607
	Non-Combustibility		
	Flame Diffusivity	50	ASTM E84-10
	Flame Propagation:	25	ASTM E84-10
	Fire Performance	Class A1	GB 8624, EN13501-1, BS 476 Part4
	Water Vapor Sorption (% by Weight)	1%	ASTM C1104/1104M
	Water Vapor Sorption (% by Volume)	1%	ASTM C1104/1104M
	Water Repellency (option available)	>99%	GB/T 10299

Sound Absorption	Product Code	125 Hz	250Hz	500Hz	1000Hz	2000Hz	4000 Hz	NRC
	DSI-ROOF 12050	0.50	0.70	0.85	0.90	0.96	1.01	0.85
	DSI-ROOF 12075	0.55	0.76	0.95	1.00	1.00	1.05	0.89
	DSI-ROOF 120100	0.60	0.78	1.01	1.05	1.05	1.00	0.90

Packaging Rock wool panel is wrapped by shrink film, packed by pallet. It's easy to load and un-load with forklift to save labor cost.

Storage & Transport Store flat. Handle with care, especially on the edges and corners, which can be damaged if subject to sharp or heavy impact.

Quality Management & Specification Compliance ISO 9001: 2008, ISO 14001:2004
GB/T 17430, GB50264, ASTM C411, ASTM C447-03, ASTM C423, GB50264

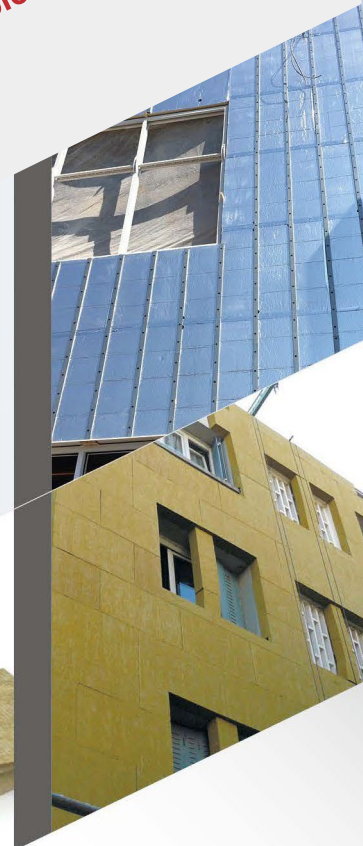
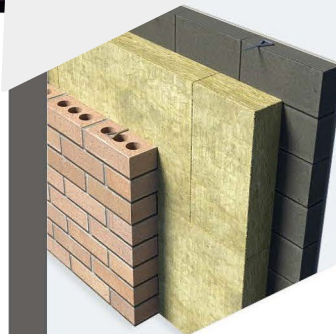
Fire performance Classified as Euro class A1 to STN EN 13501-1: 2007 and FM Certificate

Curtain Wall Thermal Insulation Rock Wool Board



**Curtain Wall Thermal Insulation
Rock Wool Board**
TO order samples, Go to dalalsteel.com
Product color

Stonewool Fiber



FEATURES AND BENEFITS

- Excellent thermal insulation
- Outstanding acoustic protection
- Non-combustible - Euro class A1
- Reduced installation costs as a result of insulation damage by water
- Easy to handle, and easy to cut to suit intricate shapes

APPLICATIONS

- Curtain wall rock wool are widely used in multi-unit residential blocks, office blocks, hospitals, schools, hotels and multiuse developments.

Product Information DSI curtain wall rock wool board is a lightweight, semi-rigid or rigid stone wool insulation board designed specifically for use in curtain wall systems, and is best suited for backpan or mechanical fastening applications. It offers a variety of curtain wall specifications. It is also available with or without reinforced foil facing.

Available Forms Semi-Rigid and Rigid Panel

Available Size	Product Code	Density (kg/m ³)	Thickness (mm)	Width (mm)	Length (mm)	Packing (pcs/PKG)	PKG/40'HQ (No#)
	DSI CWR 5050-200	50	50-200	600	1200	2-9	Loading Qty, Please consult
	DSI CWR 6020-180	60	50-180	600	1200	3-9	
	DSI CWR 8040-180	80	40-180	600	1200	3-10	
	DSI CWR 10030-150	100	30-150	600	1200	3-10	
	DSI CWR 12030-150	120	30-150	600	1200	3-10	
	DSI CWR 15030-100	150	30-100	600	1200	3-10	
	DSI CWR 20025-50	200	25-50	600	1200	4-8	

Consult your local sales representative for other available sizes and specification

Physical Properties Of DSI Cwr 10050	Tested Content	Tested Value	Tested Method
	Density	100kgs/m ³	GB/T 5480.3
	Thickness	50mm	GB/T 5480.3
	Thermal Conductivity (W/mK)	0.034	ASTM C 518 (C 177)
	Average NRC	1.05	ASTM C423
	Maximum Service Temperature	750°C	GB/T 17430, GB50264
	Recommended Service Temperature	650°C	ASTM C411-05, ASTM C447-03, GB50264
	Compression Strength (kPa)	140	EN 826
	Tensile Strength (kPa)	215	EN1607
	Shear Strength (kPa)	65	EN12090
	Non-Combustibility		
	Flame Diffusivity	50	ASTM E84-10
	Flame Propagation:	25	ASTM E84-10
	Fire Performance	Class A1	GB 8624, EN13501-1, BS 476 Part4
	Water Vapor Sorption (% by Weight)	1%	ASTM C1104/1104M
	Water Vapor Sorption (% by Volume)	1%	ASTM C1104/1104M
	Water Repellency (option available)	>99%	GB/T10299

Sound Absorption	Product Code	125 Hz	250Hz	500Hz	1000Hz	2000Hz	4000 Hz	NRC
	DSI CWR 10050	0.50	0.70	0.85	0.90	0.96	1.01	0.85
	DSI CWR 10060	0.55	0.76	0.95	1.00	1.00	1.05	0.89
	DSI CWR 10080	0.55	0.76	0.95	1.00	1.00	1.05	0.89
	DSI CWR 100100	0.20	0.20	1.00	1.00	1.00	1.00	1.00
	DSI CWR 100120	0.20	0.20	1.00	1.00	1.00	1.00	1.00
	DSI CWR 100150	0.20	0.20	1.00	1.00	1.00	1.00	1.00
	DSI CWR 100200	0.20	0.20	1.00	1.00	1.00	1.00	1.00

Available Facings Reinforced foil facings

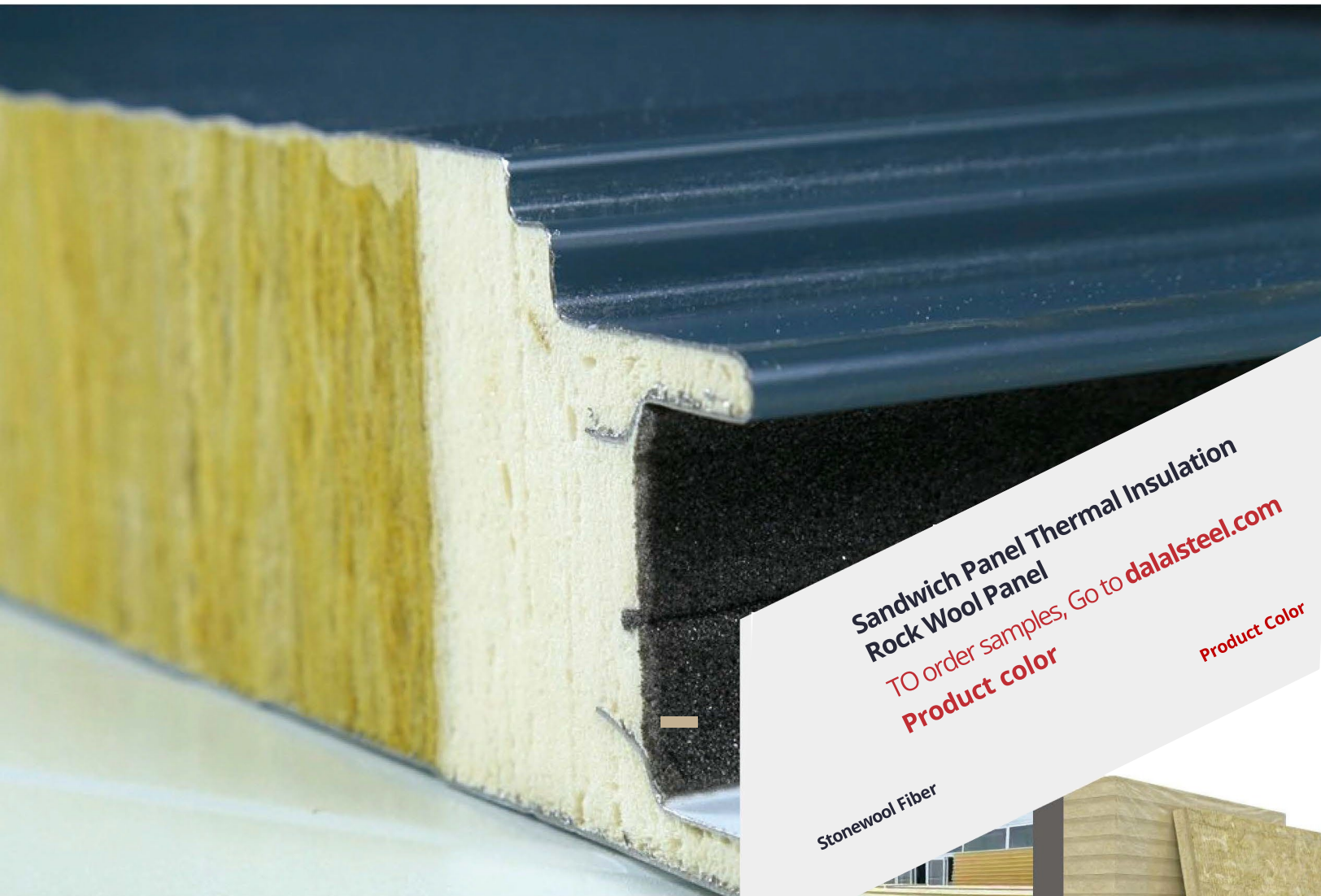
Packaging Rock wool board is wrapped by shrink film, packed by pallet. It's easy to load and un-load with forklift to save labor cost.

Storage & Transport Store flat. Handle with care, especially on the edges and corners, which can be damaged if subject to sharp or heavy impact.

Quality Management & Specification Compliance ISO 9001: 2008, ISO 14001:2004
GB/T 17430, GB50264, ASTM C411, ASTM C447-03, ASTM C423, GB50264

Fire performance Classified as Euro class A1 to STN EN 13501-1: 2007 and FM Certificate

Sandwich Panel Thermal Insulation Rock Wool Panel



Sandwich Panel Thermal Insulation
Rock Wool Panel
TO order samples, Go to dalalsteel.com
Product color

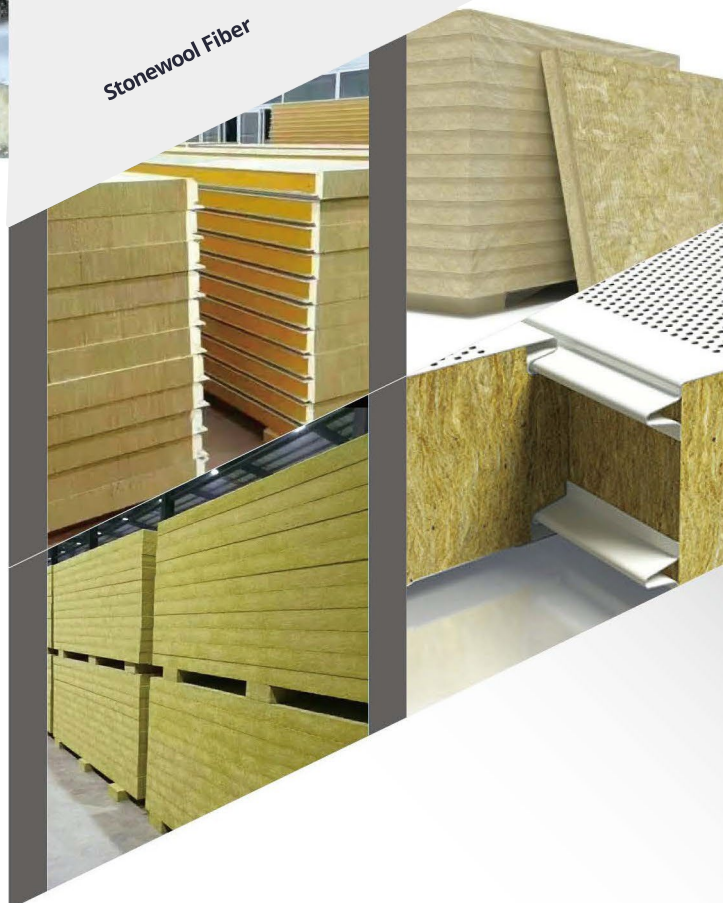
Stonewool Fiber

FEATURES AND BENEFITS

- Excellent thermal insulation
- Outstanding acoustic protection Non-combustible - Euro class A1
- Made to size to reduce wastage
- Excellent mechanical performance

APPLICATIONS

- Rock wool panel insulated Sandwich panels are widely used in commercial and industrial steel building construction for external walls, roofs, and ceiling panels.



Product Information

DSI rock wool panel is specially developed to be used as a core component for sandwich panel manufacturer with manufacturing line to cut the insulation boards into lamellas and automatically feed the product into the sandwich panel manufacturing line. It is available with various mechanical strength performances and thicknesses for different panel spans and designs.

Available Forms

Rigid Panel

Available Size

Product Code	Density	Thickness	Width	Length	Packing	PKG/40'HQ
	(kg/m ³)	(mm)	(mm)	(mm)	(pcs/PKG)	(No#)
DSI SPR 10050-150	100	50-150	1.13-1.25	1.8-2.4		Loading Qty,
DSI SPR 12050-140	120	50-140	1.13-1.25	1.8-2.4		Please consult
DSI SPR 12550-140	125	50-140	1.13-1.25	1.8-2.4		
DSI SPR 15050-120	150	50-120	1.13-1.25	1.8-2.4		

Consult your local sales representative for other available sizes and specification

Physical Properties Of DSI Spr120100

Tested Content	Tested Value	Tested Method
Density	120kgs/m ³	GB/T 5480.3
Thickness	100mm	GB/T 5480.3
Thermal Conductivity (W/mK)	0.033	ASTM C 518 (C 177)
Average NRC	1.05	ASTM C423
Maximum Service Temperature	750°C	GB/T 17430, GB50264
Recommended Service Temperature	650°C	ASTM C411-05, ASTM C447-03, GB50264
Compression Strength (kPa)	140	EN 826
Tensile Strength (kPa)	215	EN1607
Shear Strength (kPa)	65	EN12090
Non-Combustibility		
Flame Diffusivity	50	ASTM E84-10
Flame Propagation:	25	ASTM E84-10
Fire Performance	Class A1	GB 8624, EN13501-1, BS 476 Part4
Water Vapor Sorption (% by Weight)	1%	ASTM C1104/1104M
Water Vapor Sorption (% by Volume)	1%	ASTM C1104/1104M
Water Repellency (option available)	>99%	GB/T 10299

Packaging

Rock wool panel is packed by pallet, wrapped by a stretch film as appropriate or as requested by the sandwich panel manufacturer. Corner protectors are available upon request. It's easy to load and unload with forklift to save labor cost.

Storage & Transport

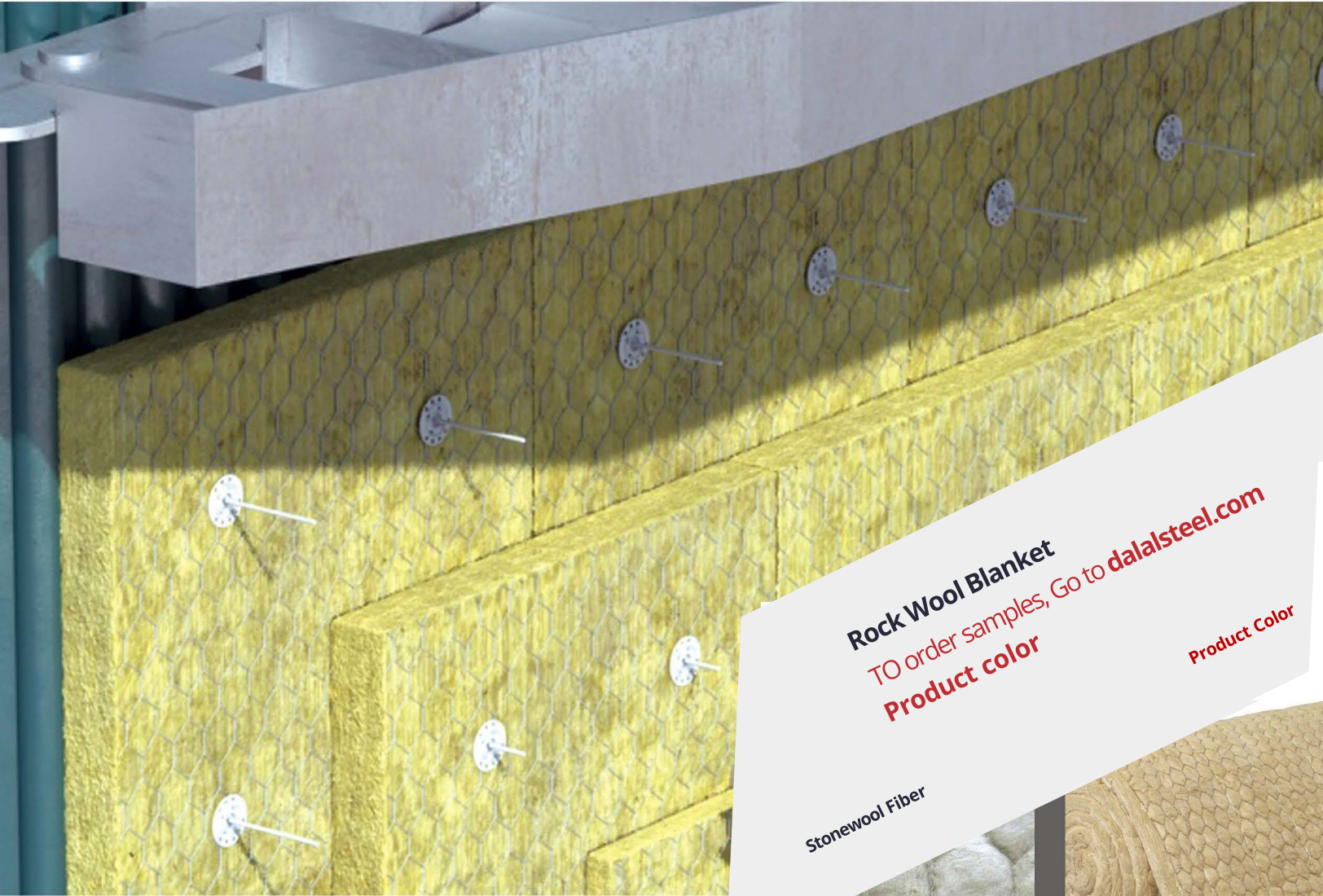
Store insulation indoors. Store product under cover and in dry conditions. Store flat. Handle with care, especially on the edges and corners, which can be damaged if subject to sharp or heavy impact.

Quality Management & Specification Compliance

ISO 9001: 2008, ISO 14001:2004
GB/T 17430, GB50264, ASTM C411, ASTM C447-03, ASTM C423, GB50264

Fire performance

Classified as Euro class A1 to STN EN 13501-1: 2007 and FM Certificate



Rock Wool Blanket
TO order samples, Go to dalalsteel.com
Product color

Stonewool Fiber

FEATURES AND BENEFITS

- Excellent thermal insulation
- Outstanding acoustic protection
- Non-combustible - Euro class A1
- Available as a complete roll, pre-cut widths.or pre-split, for easy installation
- Durability - will not sag or slump

APPLICATIONS

- Rock wool blanket products are suitable for a wide range of applications including roof spaces in all types of building and as an overlay for ceiling tiles in suspended ceilings.



Product Information

DSI rock wool blanket is a flexible blanket designed for general insulation applications and is supplied in folded or roll form for ease of installation over large areas. It is manufactured in a variety of thicknesses, suitable for thermal insulation in residential, commercial and industrial buildings. It offers a wide range of multi purpose usage in pitch roofs, attics, ceilings, suspended ceilings and other constructions where no load-bearing insulation mats are required. It may be used as single-layer insulation for thermal insulation of external structures, such as in pitch roofs and inserted between rafters in attics.

Available Forms

Flexible Blanket

Available Size

Product Code	Density (kg/m ³)	Thickness (mm)	Width (mm)	Length (meter)	Packing (pcs/PKG)	PKG/40'HQ (No#)
DSI RWBR 4075	40	75	600-1200	5		Loading Qty, Please consult
DSI RWBR 40100	40	100	600-1200	5		
DSI RWBR 5050	50	50	600-1200	5		
DSI RWBR 5075	50	75	600-1200	5		
DSI RWBR 50100	50	100	600-1200	3		
DSI RWBR 6050	60	50	600-1200	5		
DSI RWBR 6075	60	75	600-1200	5		
DSI RWBR 60100	60	100	600-1200	3		
DSI RWBR 8050	80	50	600-1200	3		
DSI RWBR 8075	80	75	600-1200	3		
DSI RWBR 10050	100	50	600-1200	3		

Consult your local sales representative for other available sizes and specification

Physical Properties Of DSI Spr120100

Tested Content	Tested Value	Tested Method
Density	80kgs/m ³	GB/T 5480.3
Thickness	50mm	GB/T 5480.3
Thermal Conductivity (W/mK)	0.034	ASTM C 518 (C 177)
Average NRC	1.05	ASTM C423
Maximum Service Temperature	750°C	GB/T 17430, GB50264
Recommended Service Temperature	650°C	ASTM C411-05, ASTM C447-03, GB50264
Non-Combustibility		
Flame Diffusivity	50	ASTM E84-10
Flame Propagation:	25	ASTM E84-10
Fire Performance	Class AI	GB 8624, EN13501-I, BS 476 Part4
Water Vapor Sorption (% by Weight)	1%	ASTM C1104/1104M
Water Vapor Sorption (% by Volume)	1%	ASTM C1104/1104M
Water Repellency (option available)	>99%	GB/T10299

Available Facings FSK, wire mesh facing

Packaging Rock wool roll is wrapped by a stretch film.

Storage & Transport Store insulation indoors. Store flat. Handle with care, which can be damaged if subject to sharp or heavy impact.

Quality Management & Specification Compliance ISO 9001: 2008, ISO 14001:2004
GB/T 17430, GB50264, ASTM C411, ASTM C447-03, ASTM C423, GB50264

Fire performance Classified as Euro class AI to STN EN 13501-1: 2007 and FM Certificate



Rock Wool Tube

TO order samples, Go to dalalsteel.com

Product color

Product Color

Stonewool Fiber

FEATURES AND BENEFITS

- High thermal insulation
- Fire safety
- Excellent mod resistance, good chemical stability
- Aging resistance, and corrosion resistance

APPLICATIONS

- Rock wool tube is specifically designed for both hot and cold service piping systems operating at temperatures from -20°C up to 450°C. Suitable for refrigerated lines, hot water, steam and condensate lines, and commercial and industrial applications.



Product Information

DSI rock wool tubes are manufactured from mineral wool insulation, it offers cellulosic protection against many risks, with excellent thermal and acoustic qualities as well as important moisture resistance. They are used for the thermal insulation of industrial pipes, central heating and solar energy installations, for the insulation against freezing and condensation of the pipes and for vibration and sound insulation of the pressure water pipes as well.

Available Forms

Prefabricated Rigid Tube

Available Size

PipeO/D	Tube Wall Thickness (mm)										
m	20	25	30	35	40	50	60	70	80	90	100
m											
21-610											
Length											
1 linear metre											

Physical Properties

Tested Content	Tested Value	Tested Method
Density Thickness	120kgs/m ³	GB/T 5480.3
Thermal Conductivity (W/mK) 70°C	0.040	GB/T 5480.3
100°C	0.044	ASTM C 518 (C 177)
150°C	0.049	
200°C	0.054	
250°C	0.066	
300°C	0.069	GB/T 17430, GB50264
350°C	0.078	ASTM C411-05, ASTM C447-03, GB50264
400°C	0.088	ASTM E84-10
Maximum Service Temperature	750°C	ASTM E84-10
Recommended Service Temperature	650°C	ASTM C1104/1104M
Non-Combustibility		ASTM C1104/1104M
Flame Diffusivity Flame Propagation:	50	GB 8624, EN13501-1, BS 476
Fire Performance	25	Part4 ASTM C1104/1104M
Water Vapor Sorption (% by Weight)	Class	ASTM C1104/1104M
Water Vapor Sorption (% by Volume)	AI	GB/T 10299
Water Repellency (option available)	1%	HJ/T206, ISO 22262-1, NIOSH
No asbestos	1%	9002 ASTM C665-06
Odor Emission Fungi Resistance	>99%	ASTM C1338-08

Available Facings FSK, ASJ facing is available accordingly to project design.

Packaging Rock wool tube is packed by carton boxes

Storage & Transport Store insulation indoors. Store product under cover and in dry conditions. Handle with care, Products will be damaged if subject to sharp or heavy impact.

Quality Management & Specification Compliance ISO 9001: 2008, ISO 14001:2004
GB/T 17430, GB50264, ASTM C411, ASTM C447-03, ASTM C423, GB50264

Fire performance Classified as Euro class AI to STN EN 13501-1: 2007 and FM Certificate



www.dalalsteel.com
info@dalalsteel.com