



MODIFIED CONTAINERS

LIST OF PRODUCTS AND SERVICES

- > Steel Buildings
- > Prefab Houses
- > Shelters
- > Containers
- > Cranes
- > Cold Storage
- > Sandwich Panels
- > Covering Panels
- > Solar Panel
- > Accessories
- > Warehouse Solutions and Storage Systems
- > Camps
- > Affordable Houses
- > Architectural Façades



COMPANY PROFILE

In the past thirty years, **Dalal Steel Industries** has provided thousands of worldwide customers for durable, affordable and versatile steel structure buildings and prefabricated houses for hundreds of different uses and in various countries worldwide. With our experience, we strive to deliver every project right and on time.

Dalal's factory consists of 250.000 m² with (65.000 m² closed area) of fully equipped factory complimented by a skilled multi-national work force of over 700 personnel.

Today, **Dalal Steel Industries** continues to expand the horizons of metal building construction by enhancing its building customization, providing better customer service and improving customer needs of the logistics industry by adding a new product line which is the warehouse solutions & storage systems, loading bay equipment & material handling to continue providing a full turnkey solutions to the customers.

Common Conex Shipping Container Dimensions

While shipping containers come in a variety of sizes. The specifications for these popular container sizes are as follows:

		20' container		40' container		40' high-cube container	
		imperial	metric	imperial	metric	imperial	metric
External Dimensions	Length	19' 10 ½"	6.058 m	40' 0"	12.192 m	40' 0"	12.192 m
	Width	8' 0"	2.438 m	8' 0"	2.438 m	8' 0"	2.438 m
	Height	8' 6"	2.591 m	8' 6"	2.591 m	9' 6"	2.896 m
Interior Dimensions	Length	18' 8 ⅜"	5.710 m	39' 5 ⅝"	12.032 m	39' 4"	12.000 m
	Width	7' 8 ⅝"	2.352 m	7' 8 ⅝"	2.352 m	7' 7"	2.311 m
	Height	7' 9 ⅝"	2.385 m	7' 9 ⅝"	2.385 m	8' 9"	2.650 m
Door Aperture	Width	7' 8 ⅝"	2.343 m	7' 8 ⅝"	2.343 m	7' 6"	2.280 m
	Height	7' 5 ¼"	2.280 m	7' 5 ¼"	2.280 m	8' 5"	2.560 m
Volume		1.169 ft³	33.1 m³	2.385 ft³	67.5 m³	2.660 ft³	75.3 m³
Maximum Gross Mass		66,139 lb	30,400 kg	66,139 lb	30,400 kg	68,008 lb	30,848 kg
Empty Weight		4,850 lb	2,200 kg	8,380 lb	3,800 kg	8,598 lb	3,900 kg
Net Load		61,289 lb	28,200 kg	57,759 lb	26,600 kg	58,598 lb	26,580 kg

ISO Shipping Container Materials and Construction

This ISO standard portable storage container requires no foundations or structural assembly. It is wind and water-tight to protect your things from the elements. All of our storage containers are durable, weather-resistant, and secure because they are built with:

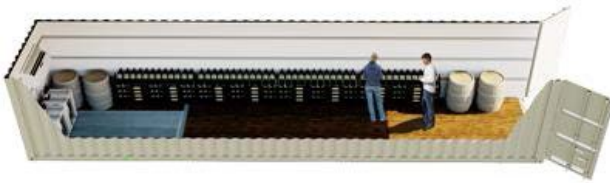
- 16 gauge vertically corrugated galvanized steel
- Double, asymmetrical steel doors with ground-level entry
- Heavy-duty, marine-grade wood flooring
- Die-stamped steel roof



Storage Container

An economical workhorse, the ISO, or Conex, shipping container provides a flexible, durable storage solution suitable for any environment. Storage containers require no special foundation and can be easily moved from site to site. Secure, double, ground level cargo doors allow for easy access. Choose from 20ft or 40ft storage options.

- Store what's important on-site in a safe and durable space.
- 160 sq/ft or 320 sq/ft of flexible and affordable storage space.
- Secure, weather-proof and rodent-proof storage.
- Heavy-duty industrial construction for long useful life.
- Quick setup and relocation with no need for foundation.



OPTIONS

- Personnel Doors
- Roll up doors
- Ventilation
- Windows
- Wall & Roof Insulation
- AC Units
- Electricity
- Sanitary fixtures
- Partitions
- Shelving Racks
- Furniture

◆ Multipurpose Modified Container

- Safe, secure living conditions in durable, climate controlled space.
- Convenient full bath with easily connected plumbing portal.
- Easy personnel entrance through a secure steel swing door.
- Configurable for additional functionality with optional kitchenette.
- Heavy duty construction for long, useful life in any environment
- Quick set up and relocation with easy electrical and plumbing
- Connections with no need for steps, ramps, tie downs, skirting or foundation.



| Telecom Shelter Container



| Office Unit



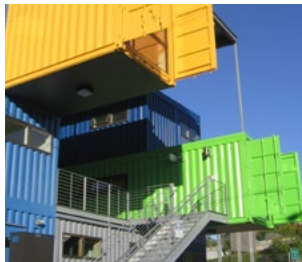
| Accommodation Unit



| Kiosk



| Residential



| Stackable Units



| Foldable Unit



| Luxury Office Building



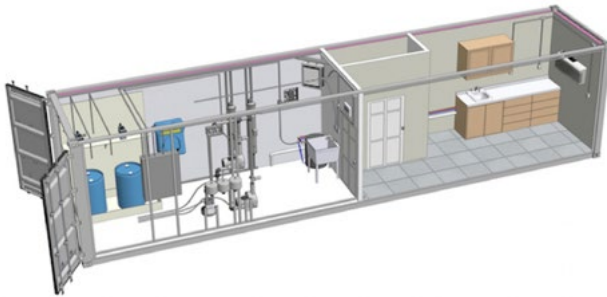
| Shop



| Caravan

◆ Equipment and Controls Containers

If you need an industrial equipment enclosure that is durable, secure, cost-effective, and easy to transport, opt for the flexibility of a repurposed shipping container. Constructed of heavy-duty, corrugated steel, enclosures stand up to severe weather and resist pests.



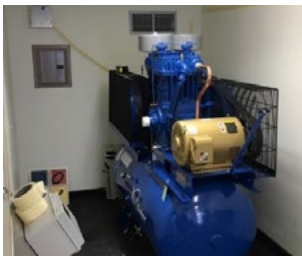
| Dalal Steel



| Equipment Container



| Reefer Container



| Telecom Shelter Container



| Generator Container

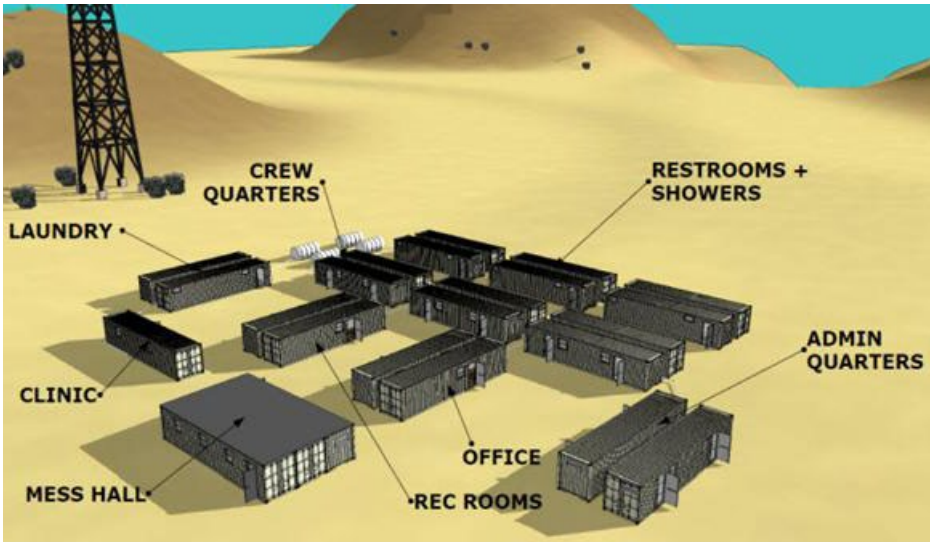


| Electrical Equipment Container

- **Security:** Each container is water, wind and rodent resistant as well as protected from potential break-ins.
- **No need for foundation:** Installation time is significantly reduced.
- **Ease of equipment installation:** Predetermined equipment pass-through design meant no guesswork during fabrication and no delays due to fluctuating measurements.
- **Cost:** Lower initial cost.
- **Low cost of ownership:** Reduced maintenance costs over time

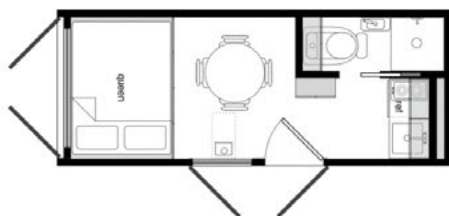
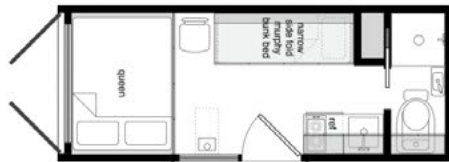
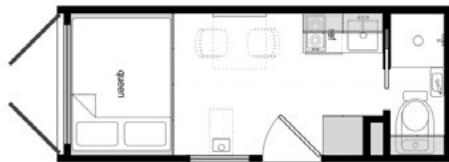
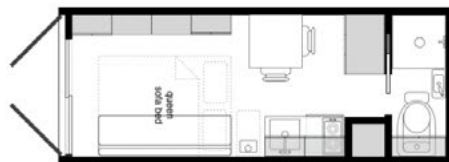
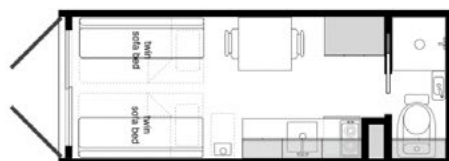
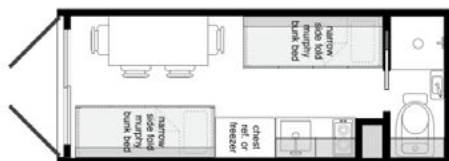
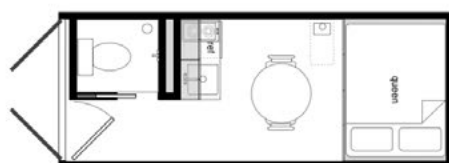
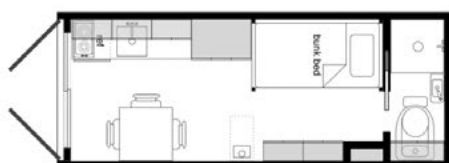
Gas and Oil Field Work Camps in Modified Shipping Containers

DALAL modular solutions have their roots in construction-site trailers, where speed, temporary space, and relocatability are important. Used as standard field offices, construction-site and in-plant buildings are available for immediate delivery. In-plant buildings are available as single- or two-story units for industrial environments with noise-reducing insulation and are typically moveable by forklift and include electrical and communications wiring, heating, air conditioning, and even plumbing



We supply units that can serve as:

- Accommodation Units
- Kitchen and mess halls
- Laundry rooms
- Shower Units
- Latrine Units
- Mixed Latrine/Shower units
- Recreation halls
- Fitness halls
- First aid units
- Storage Units
- Water treatment units
- And more





www.dalalsteel.com