

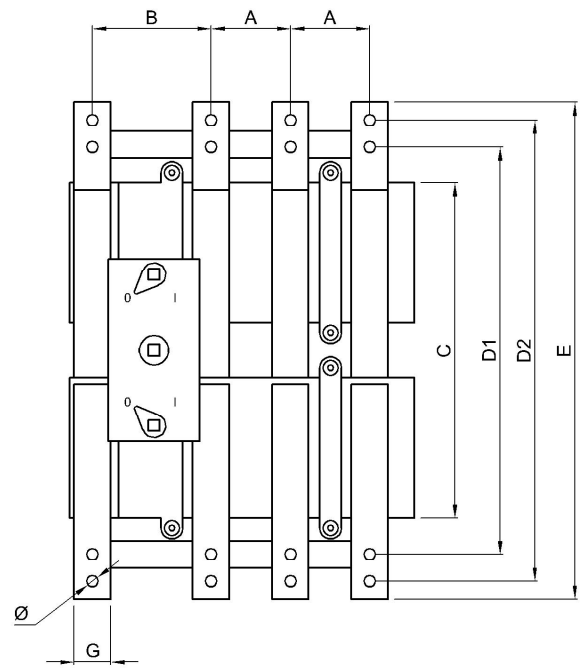
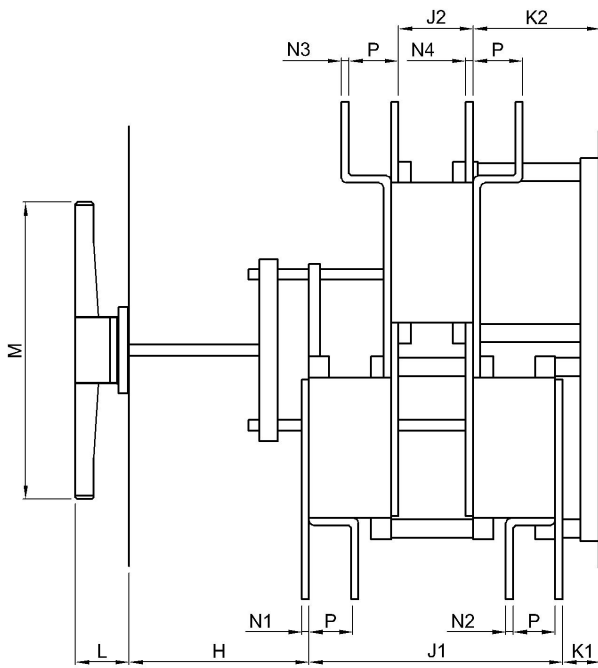
Switchgear Systems Ltd - Technical Data Sheet

BPV Bypass Switches 1250A - 2000A

- Manufactured by Contactplasma S.R.L. Italy.
- Designed and tested in compliance with BS EN 60947-3.

TYPE (SERIES)			BPV125	BPV160	BPV180	BPV200	
RATED THERMAL CURRENT AT 40° MAX A.T. I_{th}	Enclosed	A	1250	1600	1600	1800	
RATED VOLTAGE OF ISOLATION U_i	a.c.	V	1000	1000	1000	1000	
	d.c.	V	600	600	600	600	
IMPULSE WITHSTAND VOLTAGE	-	kV	8	8	8	8	
OPERATIONAL CURRENT	AC22A	I_e 500V	A	1250	1600	1600	1800
OPERATIONAL CURRENT	AC21A	I_e 500V	A	1250	1600	1800	2000
REACTIVE POWER see Note 1		380V	kVAr	400	500	500	500
RATED SHORT CIRCUIT MAKING CAPACITY I_{cm}		415V	kA peak	105	121	121	132
MECHANICAL ENDURANCE		operations	n°	3000	3000	3000	3000
ELECTRICAL LIFE		operations	n°	500	500	500	500
POWER LOSSES PER POLE		-	W	40	63	65	80

Note 1: Due to harmonics and tolerance of the capacitors, the rated values have been reduced by 33%.



Dimensions mm	Ø	A	B	C	D1	D2	E	G	H	J1	J2	K1	K2	L	M	N1	N2	N3	N4	P
BPV125	12.5	87	130	365	425	485	525	40	345	285	83	52	139	59	330	6	6	6	6	48
BPV160	12.5	87	130	365	425	485	525	40	345	298	87	57	137	59	330	8	10	8	10	45
BPV180	12.5	87	130	365	425	485	525	40	345	304	93	51	137	59	330	16	16	16	16	42
BPV200	12.5	87	130	365	425	485	525	40	345	308	97	47	137	59	330	20	20	20	20	40