

Deter fraud and provide a seamless user experience for customers on the go.

The way we choose to get from point A to point B is evolving for a number of reasons, with more and more consumers interested in transportation access over vehicle ownership. Emerging business models and technologies are creating integrated, electrified shared mobility networks that provide consumers with the flexibility and economic value they desire.

If your business involves non-ownership usage of cars, scooters and other vehicles, you need to be sure customers are who they say they are before you hand over the keys or pick up a new rider. While you want to protect your fleet, you also want to provide a digital user experience that makes sign-up and ongoing usage quick and easy.



Car Manufacturers



Ride Sharing



Vehicle Rentals



Micro Mobility

Identity Verification through Informed AI

Jumio's end-to-end identity verification and authentication solutions leverage informed AI, computer vision, machine learning and verification experts to establish the real-world identity of your users.



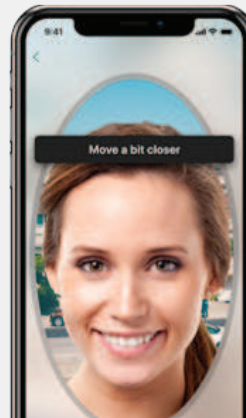
ID Proofing

Is the ID document authentic and valid?



Validity Check

Is the person holding the ID the same person shown in the ID photo?



Liveness Check

Is the person holding the ID physically present during the transaction?



Face-Based Biometric Authentication

Is the person who originally signed up for the account the same person attempting to access the account?

How Jumio Can Help

Jumio's suite of identity and authentication solutions is specifically designed for mobility organizations.



ID Verification

Establish the genuine identity of your users before letting them take the wheel. Jumio ID Verification verifies government-issued IDs in real time, employing advanced technologies to detect digital manipulations of genuine ID images, content (name, address, date of birth, etc.) and face photo replacements.



Fraud Deterrence

Cars, e-bikes and scooters are high-value assets that must be protected against theft. Jumio's identity verification and authentication solutions can help mobility-based businesses protect their fleets by ensuring that the person creating an account or leasing a vehicle is who they claim to be. By requiring a valid government-issued ID and a selfie, Jumio provides a valuable fraud-prevention tool, as fraudsters generally prefer not to use their own likeness when trying to scam the system.



Liveness Detection

Given the rise of spoofing (the act of using a photo, video or a different substitute for an authorized person's face), Jumio employs state-of-the-art liveness detection to ensure that the person creating the account or making an online purchase is physically present. Jumio leverages FaceTec for its advanced liveness detection and anti-spoofing capabilities – the only biometrics solution provider to pass Level-1 and Level-2 anti-spoofing results in NIST/NVLAP-certified iBeta Presentation Attack Detection (PAD) testing.

When a new customer or driver creates an online account, Jumio captures an image of a government-issued ID and a 3D face map, which is instantly analyzed via AI to determine that the user is a living human and not a spoof.



Ongoing Authentication

When an established user logs in, they take a fresh selfie and a new 3D face map is created, which is then compared to the original 3D face map (created during enrollment) to ensure that the person logging in is the same as the account owner. It's fast, reliable and helps provide peace of mind that the person is who they claim to be.

This solution serves mobility-based businesses including ride-sharing services (re-verifying drivers' identities on a consistent basis) and rental agencies (enabling known customers to unlock their vehicles with a selfie instead of waiting in a queue).

Key Benefits

- ✓ **Fast, accurate conversions**
Achieve seamless customer conversions with accurate verification that occurs in real time, with a definitive yes or no answer.
- ✓ **The UX experts**
We'll share the magic and best practices for how to provide an intuitive and satisfying user experience and how to minimize the friction associated with a robust end-to-end identity verification and authentication solution.
- ✓ **Cross-platform support**
Jumio seamlessly integrates into websites and iOS or Android applications via APIs, SDKs and webcams.
- ✓ **AI-driven innovation**
Jumio uses informed AI and machine learning to reliably extract key data from government-issued IDs and find anomalies in manipulated IDs.
- ✓ **Online and onsite verification**
Intuitive digital and kiosk-driven experiences help you verify the identity of all customers, whether they're online or onsite.
- ✓ **Biometric-based solutions**
Face-based biometric verification and liveness detection are a strong deterrent for would-be fraudsters using a fake ID.
- ✓ **Global footprint**
Jumio supports more countries, languages and document types than any other solution.
- ✓ **Fast implementation**
Quickly integrates into your website or mobile app and business processes.

