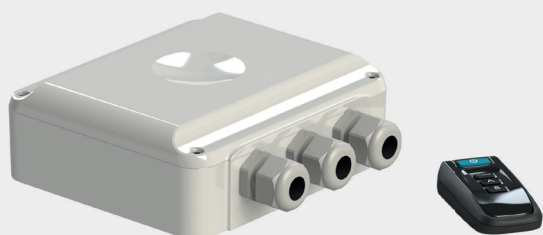
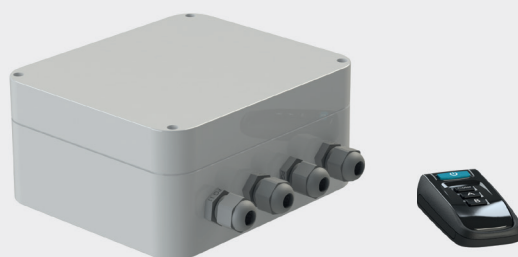


PL-REM
PL-REM-60



PL-REM-200



CHARACTERISTICS

- ON/OFF communication, by quickly switching on/off the DURAVISION lamp will change colour this according to fixed colour programs
- Including TX868 remote control
- With/without built-in transformer
- 2 relay contacts, toggle or pulse mode

ADVANTAGES

- Easy installation
- Safe control for DURAVISION led lighting
- Control of external devices such as garden lighting or pool cover via relay contacts



TECHNICAL SPECIFICATIONS

CHARACTERISTICS	UNIT	PL-REM	PL-REM-60	PL-REM-200
Type of control DURAVISION		ON/OFF	ON/OFF	ON/OFF
Frequency band transmitter	MHz	868	868	868
Nominal input voltage	VAC	230	230	230
Built-in toroidal transformer		-	✓	✓
Transformer VA rating	VA	-	60	200
Output voltage	VAC	-	12	12
Realy contacts quantity		2	-	2
IEC protection class		Class II	Class II	Class II
IP class		IP54	IP54	IP54
Unit dimensions (L*W*H)	mm	150*157*51	15*157*51	195*149*90
Net weight	kg	0,5	1,3	3,2
Warranty	year	2	2	2

TO COMBINE WITH

LED LIGHTING	EXTERNAL TRANSFORMER
VISION Spectra DVM p. 14	TORO-DIN p. 98
VISION Spectra DVS p. 16	TORO-IP64 p. 98
VISION Adagio Pro p. 18	
VISION Allegro p. 20	
VISION Pro p. 22	
VISION Moonlight p. 36	