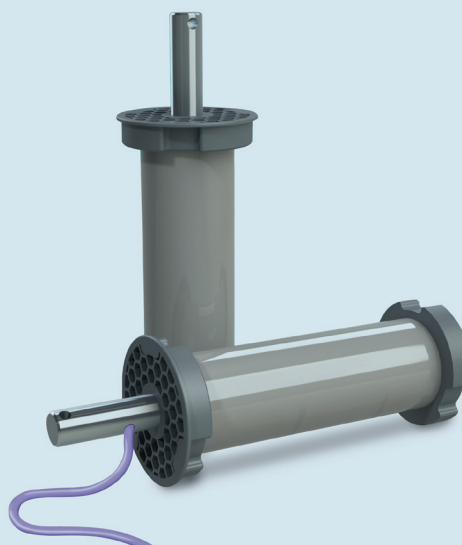


DCM-250



CHARACTERISTICS

- Tubular motor
- Voltage 24V DC
- Control via LINK Cover or LINK Master

ADVANTAGES

- Robust and durable
- Powerful and quiet motor
- Easy installation in COVER Tube
- Compatible with salt electrolysis



TECHNICAL SPECIFICATIONS

CHARACTERISTICS	UNIT	DCM-250
Motor type		24V DC
Torque	Nm	250
Speed	Rpm	5
Length cable	m	4
IP class		IP68
Shipping dimensions (L*W*H)	mm	540*200*200
Shipping weight	kg	11,7
Warranty	year	3

TO COMBINE WITH

TELESCOPIC TUBE	MOUNTING SYSTEM	CONTROL UNIT
COVER Tube p. 72	COVER Wall Duct p. 76	LINK Cover p. 92
	COVER Cable Duct p. 78	LINK Master p. 94
	COVER Hanging System p. 80	