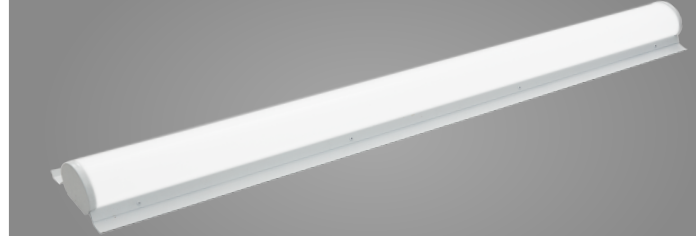
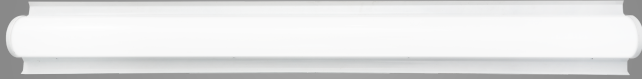


4FT



## PERFORMANCE FEATURES

### UL Listing

Suitable for damp locations

### Lifespan:

Lumen Maintenance, L70 > 54,000 hours  
 Rated Life: 100,000 hours

### LEDs:

Long-life, high-efficacy, micro-power LEDs

### Finish

Long lasting white finish with high durability

### Optional Accessories

- Suspension mount kit
- Cable suspending mounting kit
- V-hooks & Chain suspending mounting kit
- Right angle connection kit
- Wire guards, square profile or arc profile optional
- Occupancy sensor
- EM battery

### IESNA LM-79 & IESNA LM-80 Testing:

LED luminaires have been tested based on IESNA LM-79 and LM-80 by a third-party laboratory

### Housing and lens

Sheet metal stamping, Frosted PMMA lens

### Mounting

Retrofit mounting included

### Dimming Driver:

Driver includes dimming control wiring for 0-10V dimming systems. The dim-to-off voltage threshold of optional 12V AUX integrated driver ranges from 0.1V to 0.5V.

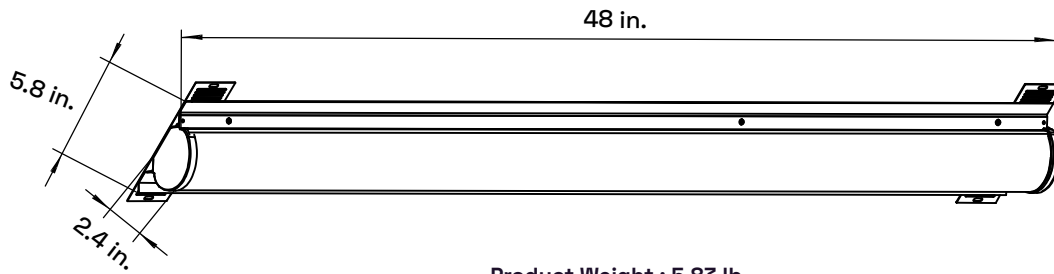
## SKU GUIDE

Model Section		RSTR4-40W-CCT-DV2-F-WHSM-2						
RSTR4		40W	CCT	DV2		F	WHSM	
BODY TYPE PREFIX	MODEL NAME	WATTAGE	CCT (if selectable = CCT)	DRIVER	VOLTAGE	ELECTRICAL OPTIC/LENS	HOUSING FINISH	MOUNTING
RSTR	4FT	40W - 22/30/40	3500/4000/5000	D - 0-10V Dimming	V2 - 120-277V (Universal Voltage)	F-Frosted Lens	WH-White Finish	SM-Surface Mount

## SKU SPECIFICATION

SKU #	Nominal Wattage	CCT	Lumens	Efficacy (LPW)	CRI	Input Voltage	Operating Temp.	Certifications	Avail Options
RSTR4-40W-CCT-DV2-MS-F-WHSM-2	22/30/40	3500/4000/5000K	2860/3900/5200	125	>80	120-277V	-4(Degree) F/ -20(Degree)C to 122(Degree) F/ -50(Degree) C	UL listed DLC listed	Occupancy sensor, EM battery

## PRODUCT DIMENSIONS

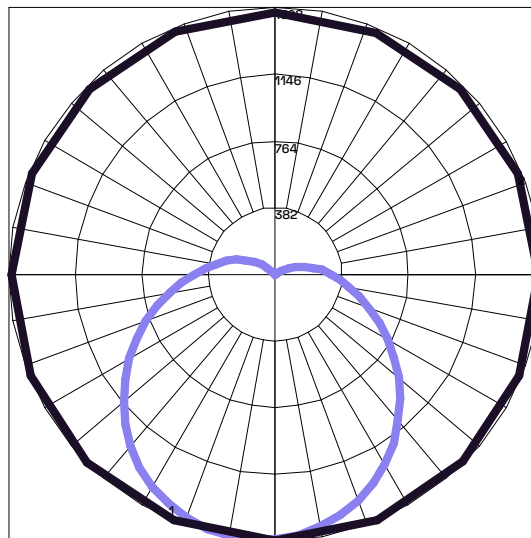


Product Weight : 5.83 lb

## PACKAGING DIMENSIONS

SKU #	Standard Pack	Dimension
RSTR4-40W-CCT-DV2-MS-F-WHSM-2	2 Pack	L 49.8in x W 7.4in x H 6.2in

## PHOTOMETRICS



Maximum Candela = 1528.3 Located At Horizontal Angle = 270, Vertical Angle = 5  
 # 1 - Vertical Plane Through Horizontal Angles (270 - 90) (Through Max. Cd.)  
 # 2 - Horizontal Cone Through Vertical Angle (5) (Through Max. Cd.)

**Medinah Power**

**Contact us:** For support & assistance, please feel free to contact us below.

E-Mail: [info@medinahpower.com](mailto:info@medinahpower.com) | Web: [www.medinahpower.com](http://www.medinahpower.com) | Ph: +1 (844) 870-5337

