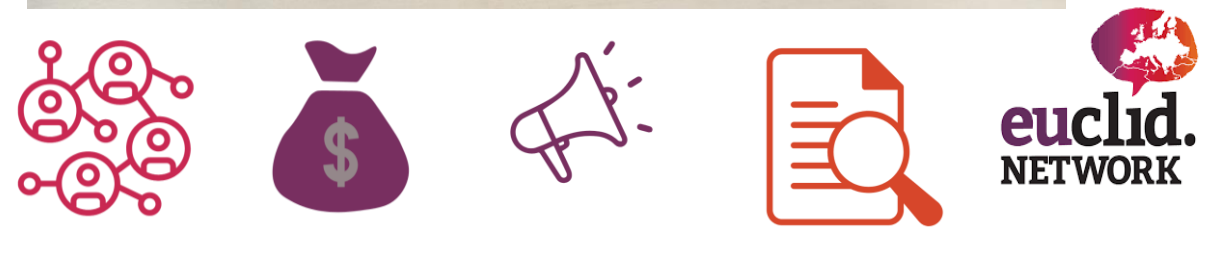


The European Social Enterprise Monitor

Euclid Network



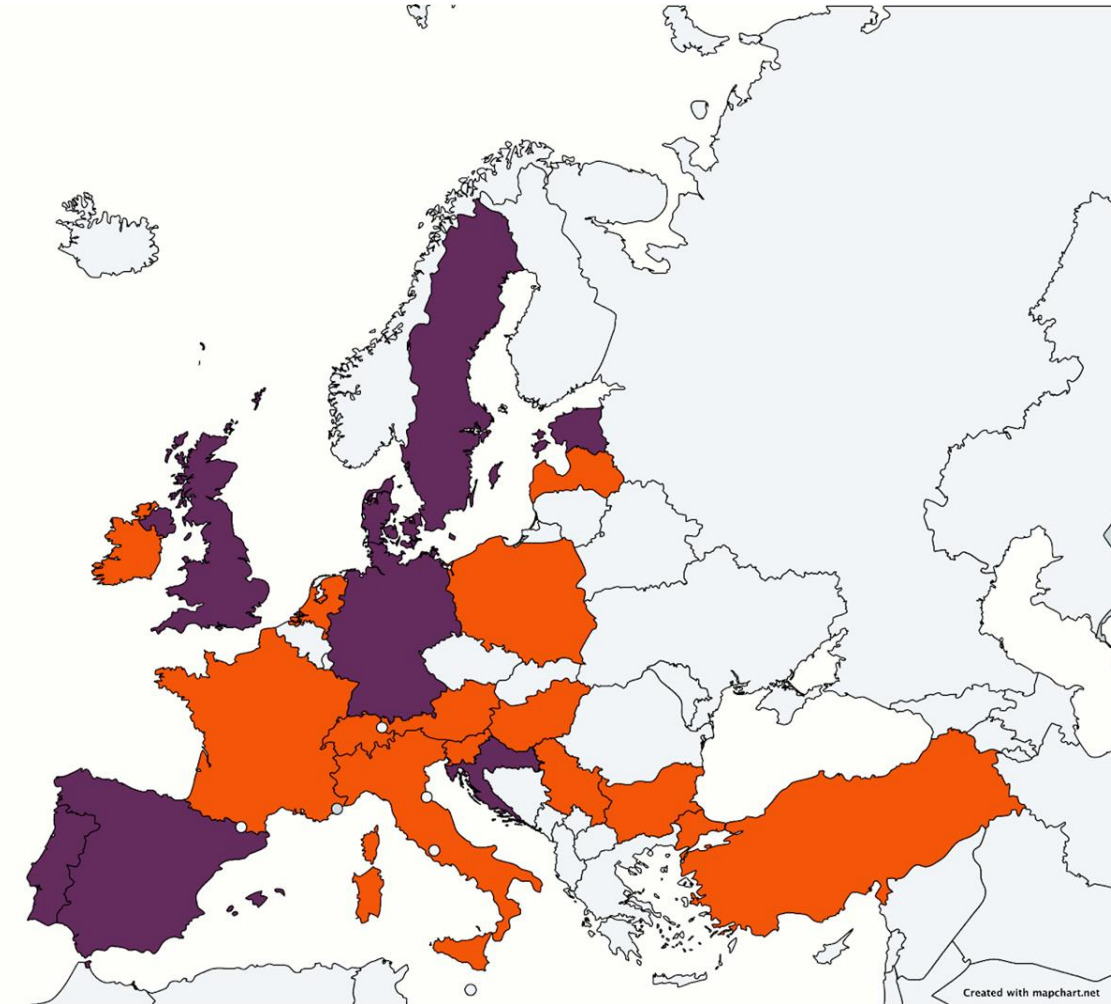
Euclid Network



What is the ESEM?

What year did ESEM countries join the project?

- Countries joining in 2020-2021
- Countries joining in 2021-2022
- Countries not currently in the ESEM



europa
social enterprise
monitor



ESEM 2: 2021-22

2 European Social Enterprise Monitor

The State of Social Enterprise in Europe 2021-2022



euclidean
social enterprise
monitor

Supported
by the



Google.org

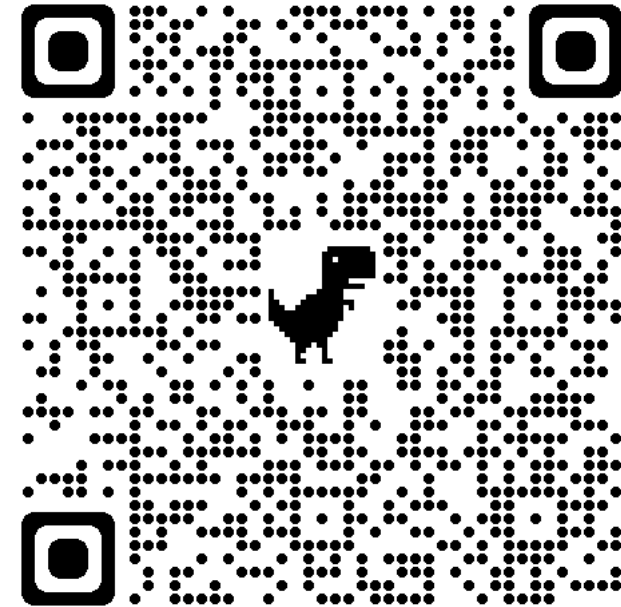


ImpactCity
The Hague

BertelsmannStiftung

WORLD
ECONOMIC
FORUM

SCHWARZ FOUNDATION
FOR SOCIAL ENTREPRENEURSHIP



The ESEM Consortium and Partners 2021-22

Founding Partners & Sponsors:



Country Partners:



Research Board:

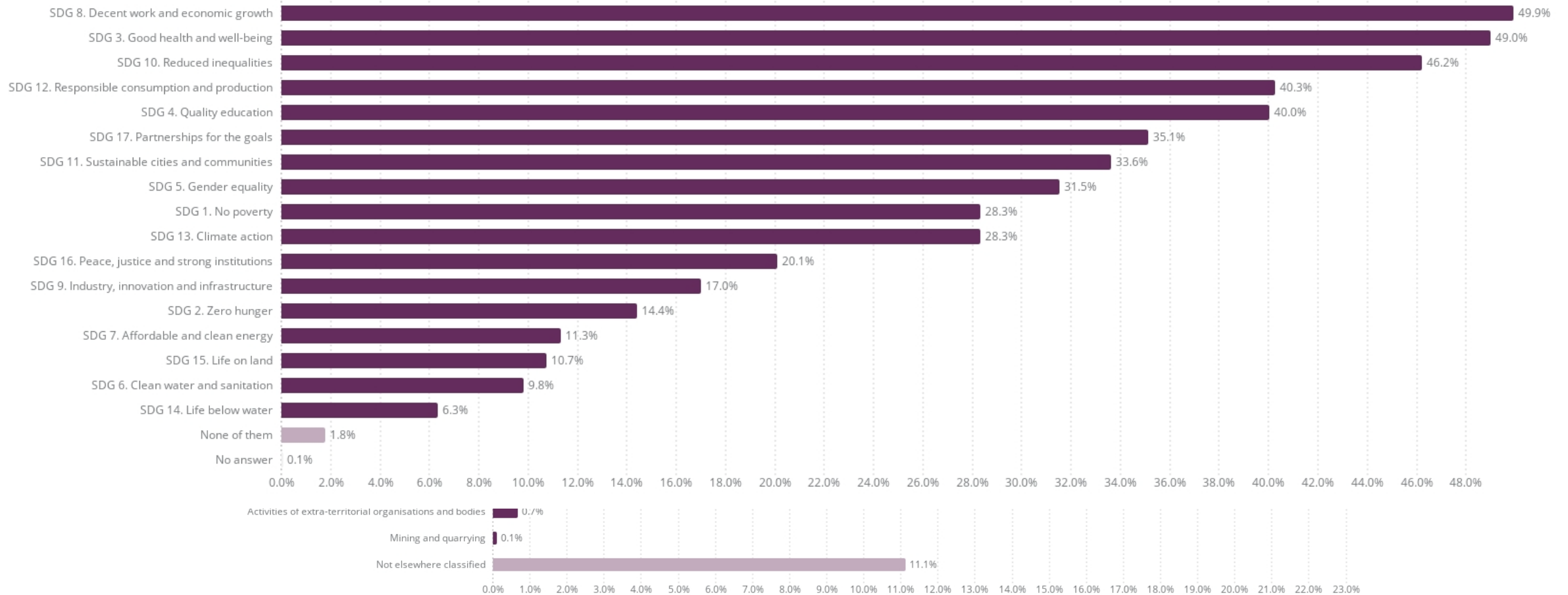


Research Partners:

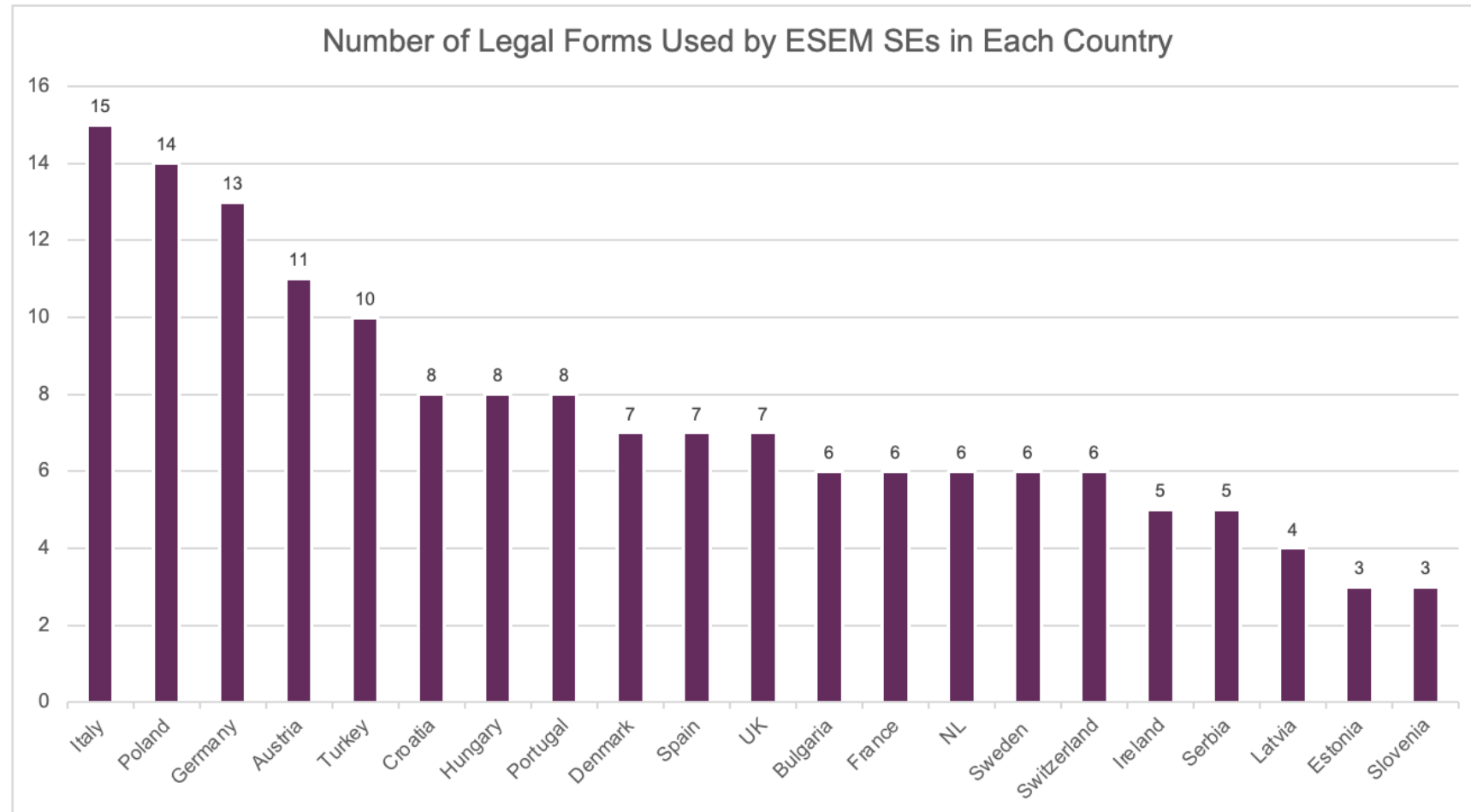


ESEM 2021-22 Observations: intended impact

What kind of social/ environmental impact does your organisation want to achieve? (UN Sustainable Development Goals) (multiple selections possible) 1,907 ▾

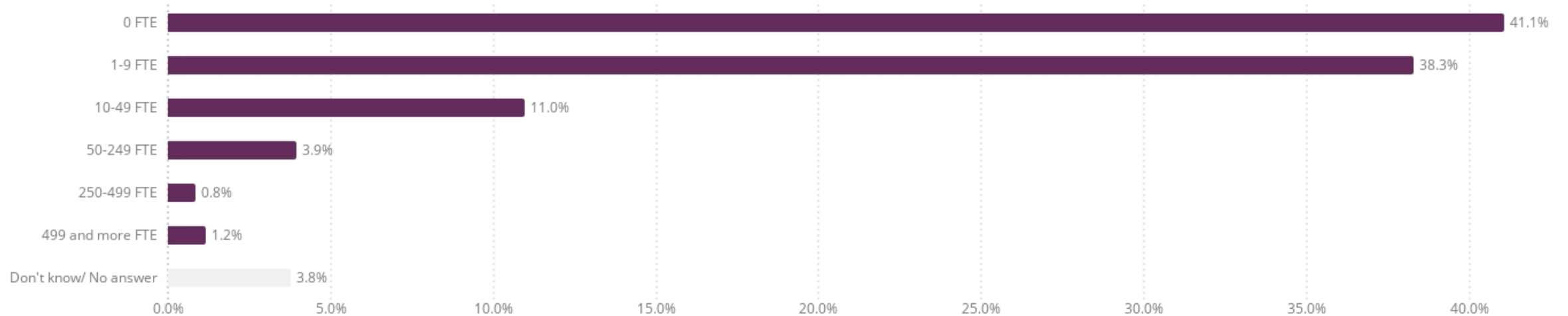


ESEM 2021-22 Observations: legal forms used by ESEM Social Enterprises



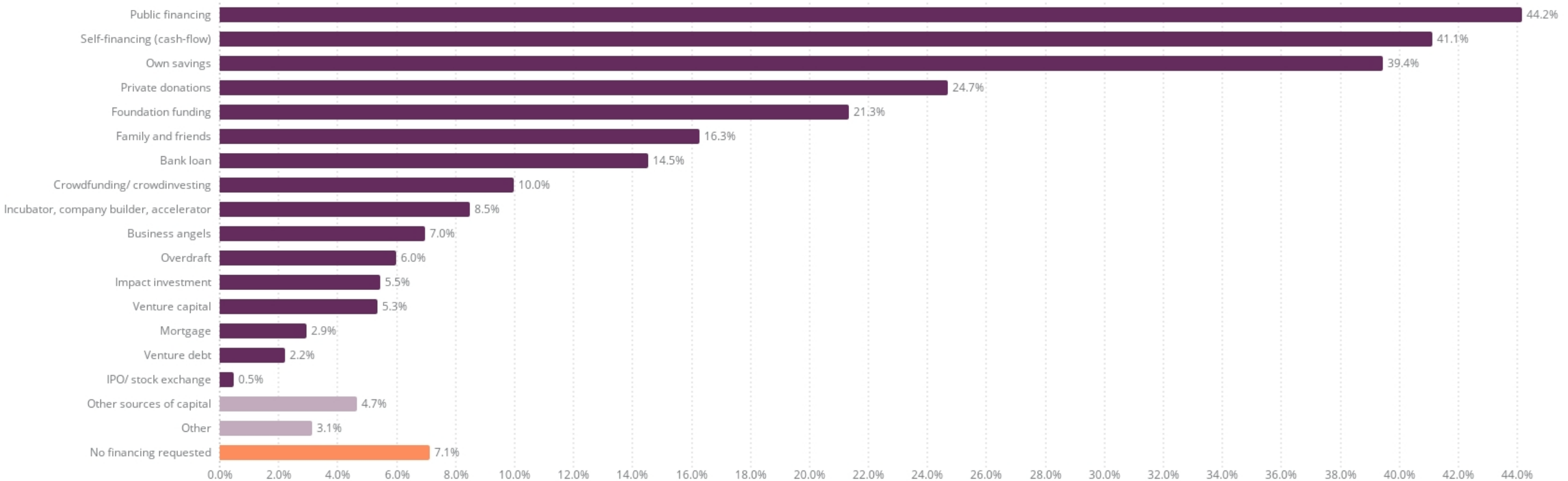
ESEM 2021-22 Observations: size of ESEM Social Enterprises

How many people work as volunteers for your organisation? 1,907



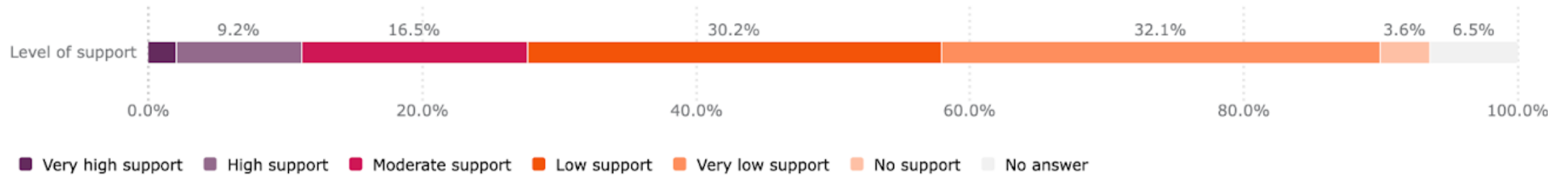
ESEM 2021-22 Observations: revenues of ESEM Social Enterprises

What types of financing did you request in the last 12 months? (multiple selections possible) 1,907



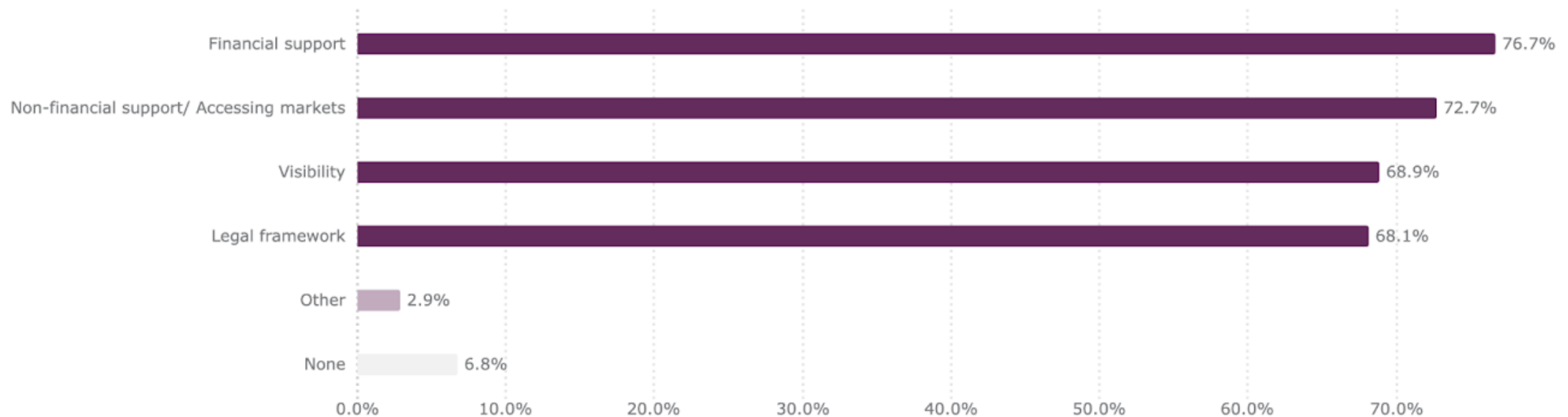
ESEM 2021-22 Observations: political support

How would you rate the political support for social entrepreneurship in your country? 1,907

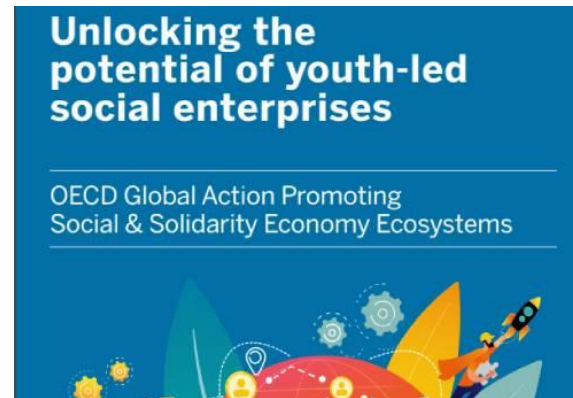


ESEM 2021-22 Observations: key barriers for ESEM Social Enterprises

What barriers do you face with your organisation? 1,907



Making Impact with the ESEM



Get in touch!



ESEM 2023-24 is coming in October 2023!

socialenterprisemonitor@euclidnetwork.eu