

# VOGUE

T H E A T R E



PRODUCTION AND TECHNICAL SPECIFICATIONS

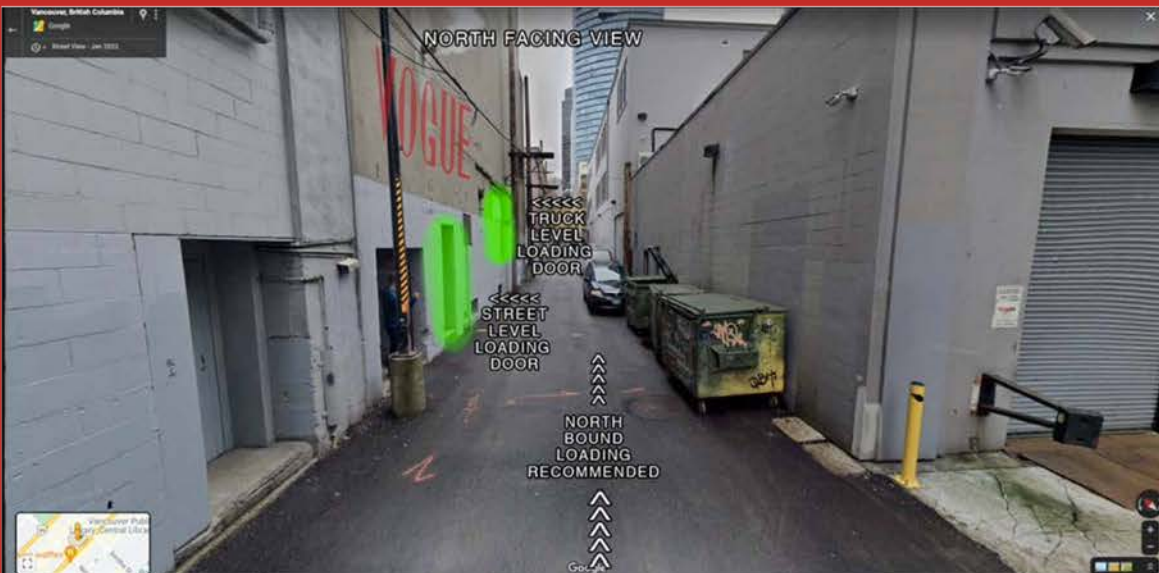
# LOAD IN / LOAD OUT

The Vogue Theatre's primary load in / load out zone is the back of house / laneway. The recommended point of entry into the lane is Nelson Street. A spotter is recommended. Semi trucks may also back in from Robson Street. A spotter is necessary. If the lane is inaccessible, a Granville Street load in / load out is permitted with approval from the House (info provided upon approval).

For standard back of house load ins, cases & gear may be loaded in either via the fire exit (stage left) and ramped onto the stage or loaded directly onto the stage via the bay doors using a temporary dock.

The theatre has limited storage space. Dead cases may need to be stored back on the truck.

Generators are not permitted to run in the alley during load in / load out. After load in, touring vehicles must relocate and clear the lane.



# PARKING

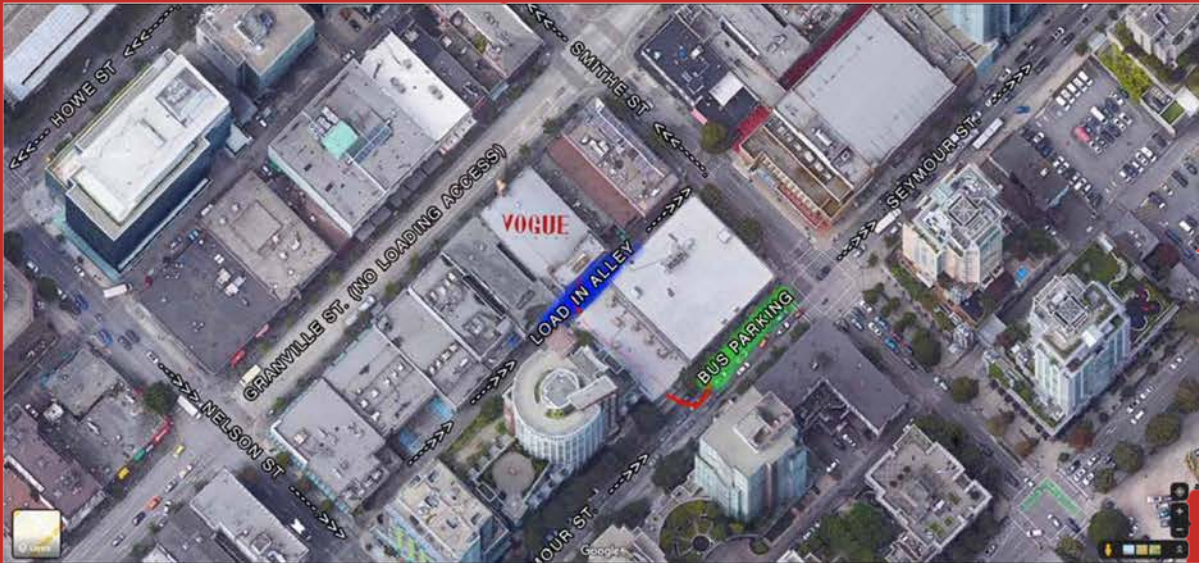
The Vogue's tour bus & small touring vehicle parking is located on the west side of Seymour Street (900 block) adjacent to the back entrance of the theater.

Requests for parking must be advanced a minimum of 2 weeks prior to the event date to allow for permitting with the City of Vancouver.

Semi trucks are not permitted to park on Seymour St. Off site semi parking can be arranged with advanced notice.

There is no shore power available at our venue.

If permit parking is not required, there is a 24 hour paid lot located directly behind the Vogue.

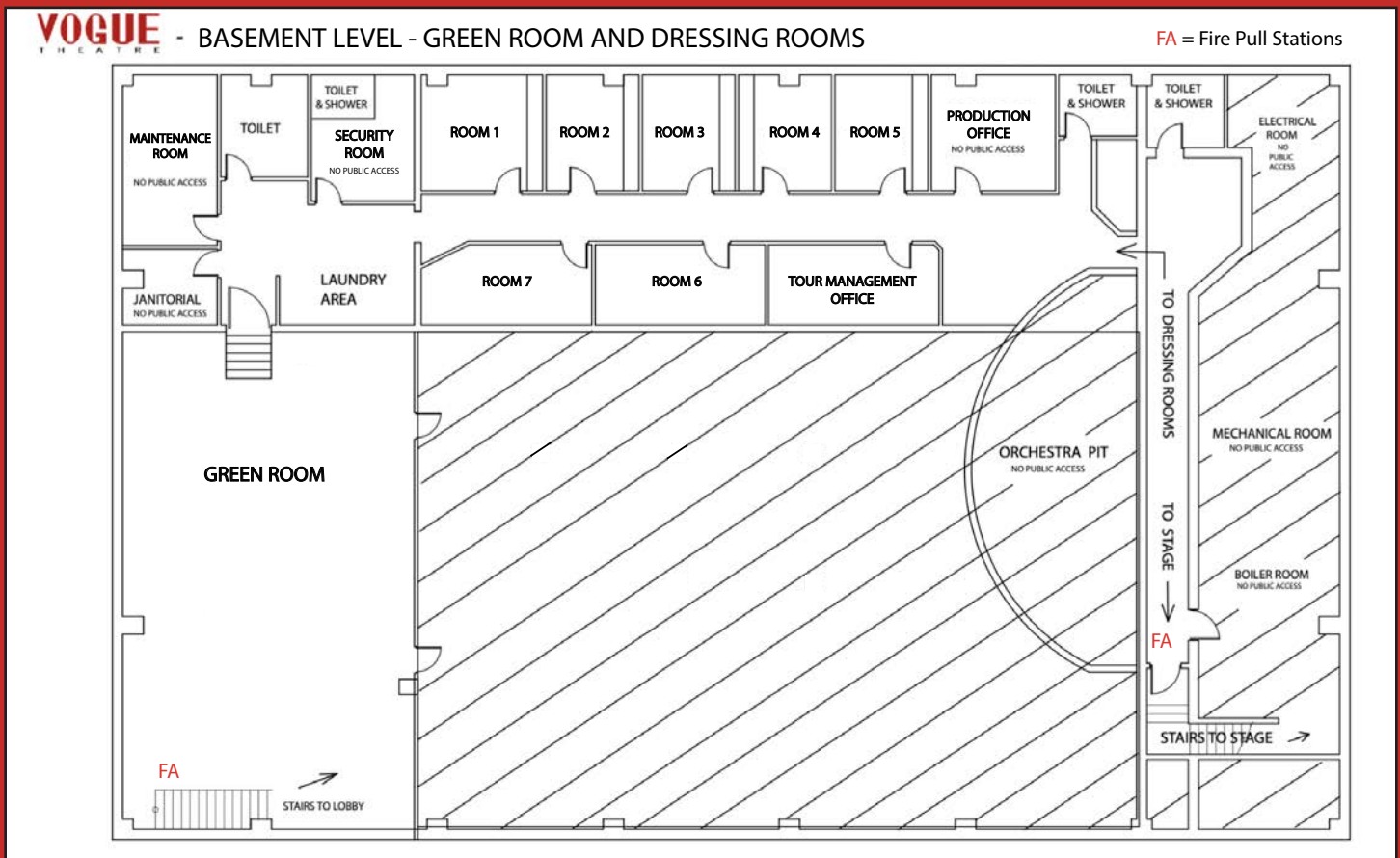


# GREEN ROOM

The basement level of the Vogue includes the following amenities for artists and production personnel:

- 1 x production office
- 2 x larger dressing rooms
- 4 x smaller dressing rooms
- 2 x bathrooms with shower, toilet, sink & mirror
  - 1 x bathroom with toilet, sink & mirror
  - 1 x large lounge area with kitchenette
    - 1 x ice machine
    - 1 x laundry area
      - 1 x steamer
  - 1 x iron & ironing board
    - 1 x microwave
    - 1 x toaster
    - 1 x toaster oven
      - 3 x kettle
    - 1 x coffee machine

\* Towel service available on request



# STAGE INFORMATION

## PRESENTATION AREA

Wood, black painted, no stage elevators

## STAGE DIMENSIONS

Proscenium Opening: 35'6" Wide x 22'8" high  
Stage Depth: 29'6" deep, upstage crossover drape located at 24'4"  
Upstage Wall: 47'9" wide  
Stage Right Wing Space: 8'x14'  
Stage Left Wing Space: 7'3" x 9'7"

## BARRICADE

40' of aluminum blow through barricade available

## RIGGING POINTS

Steel grid available above fly system, max load 500lbs per point

## FLY SYSTEM

Operated from fly rail above stage: maximum flying height: 54'

Pipe length: 42'

1x lineset for guest backdrop or screen, maximum load 200lbs

Please note the backdrop lineset is the only available lineset for flying elements and is restricted to backdrops / screens only. If flown lighting is needed, truss & motors must be rented.

## DRAPERY

1x 40' upstage crossover black curtain with stage center split 8' from upstage wall

Upstage legs located at 22'10" from downstage edge, 5'8" wide each

Downstage hard legs located 14'9" from downstage edge, on a traveler from 2'4" to 8'10" wide

## PROJECTOR & SCREEN

\*No in house projector. Rentals available upon request.

In House Screen (fixed) located 15' upstage (22' x 35')

Rented screens may be flown from guest backdrop lineset.

## POWER

Audio 200A 3phase cam lock located stage left (ground/neutral not reversed)

Lighting/Video 1x 400A 3phase cam lock located stage right (ground/neutral not reversed)

1x 100A 3phase cam lock located stage right (ground/neutral not reversed)

\*We have 2 male to male cam lock turnarounds\*

6x edison circuits available around the stage for stage power

## ADDITIONAL NOTES

Wired Communication (ClearCom) at SL, SR, FOH, LX, Spotlight

# HOUSE AUDIO

## MAIN SPEAKER SYSTEM

1 stereo 4-way Meyer Sound System consisting of:  
16 x Meyer Melodie Curvilinear Array Loudspeakers (Flown)  
2 x Meyer MSL-4 (Infill)  
4 x Meyer 700HP Subwoofers  
1 x DigiDesign D-show mixing console  
1 x Digidesign D-show sidecar  
1 x Meyer Galileo 616 speaker management system

## MONITOR SYSTEM

(Stage Left)

Avid SC48 digital monitor console with 16 outputs  
10 x Meyer MJF-212a powered monitors  
1 x QSC 18" drum sub

## MICROPHONE PACKAGE

1 x Shure Beta91  
1 x Sennheiser e901  
2 x Shure Beta52  
10 x Shure SM57  
2 x Shure Beta57  
5 x Sennheiser e604  
4 x Sennheiser e904  
7 x Shure SM81  
4 x Shure SM58  
9 x Shure Beta58  
2 x Shure SM58s  
10 x Radial JDI DI  
2 x Radial J48 DI  
1 x Radial Pro48 DI  
  
1 X Shure URD4  
2 x Shure Wireless (B58 Capsules)

## POWER

200amp 3 phase camlock (ground/neutral not reversed)  
30 amp twist lock to breakered edison power box for backline  
Available edison stage circuits

## CABLES

2 x shielded Cat6 from FOH audio booth to stage  
48 Channel analog split to FOH and Monitor Consoles  
2 x Spare 48 channel multi-pin analog hose for guest consoles using house split. 6' and 10'

# HOUSE LIGHTING

\*Please note that the house lighting hang is a permanent installation. Fixtures cannot be moved or repositioned.

## FRONT LIGHTING

4x Vari-lite VL1000TSD

10x 26 degree leko, 2x 36degree lego all 750w (on truss)

6x 26 degree leko 750w (balcony)

12x par64 w/ various colour gels (SR & SL ladders)

## STAGE LIGHTING

8x Martin Mac 101

4x Vari-lite VL3000 Spot

6x Martin Mac250 Krypton

6x Martin Atomic 3000

4x 4 Lite Blinders

## ATMOSPHERE

1x radiance hazer

## CONSOLE

GrandMA2 on PC command wing + fader extension

## LX BOOTH

2x spare 5pin DMX lines from stage

1x spare cat6 ethernet line from stage

1x 15amp edison circuit

# HOUSE LIGHTING

| Fixture | Universe | Address | Fixture Type         | Mode       | Position   |
|---------|----------|---------|----------------------|------------|------------|
| 1       | 1        | 1       | Amber Par64          | Dimmer     | DSR Ladder |
| 2       | 1        | 2       | Blue Par64           | Dimmer     | DSR Ladder |
| 3       | 1        | 3       | White Par64          | Dimmer     | DSR Ladder |
| 4       | 1        | 4       | Magenta Par64        | Dimmer     | DSR Ladder |
| 5       | 1        | 5       | Red Par64            | Dimmer     | DSR Ladder |
| 6       | 1        | 6       | Green Par64          | Dimmer     | DSR Ladder |
| 7       | 1        | 7       | Green Par64          | Dimmer     | DSL Ladder |
| 8       | 1        | 8       | Red Par64            | Dimmer     | DSL Ladder |
| 9       | 1        | 9       | Magenta Par64        | Dimmer     | DSL Ladder |
| 10      | 1        | 10      | White Par64          | Dimmer     | DSL Ladder |
| 11      | 1        | 11      | Blue Par64           | Dimmer     | DSL Ladder |
| 12      | 1        | 12      | Amber Par64          | Dimmer     | DSL Ladder |
| 13      | 1        | 13      | Leko 26deg           | Dimmer     | FOH Truss  |
| 14      | 1        | 14      | Leko 36deg           | Dimmer     | FOH Truss  |
| 15      | 1        | 15      | Leko 26deg           | Dimmer     | FOH Truss  |
| 16      | 1        | 16      | Leko 26deg           | Dimmer     | FOH Truss  |
| 17      | 1        | 17      | Leko 26deg           | Dimmer     | FOH Truss  |
| 18      | 1        | 18      | Leko 26deg           | Dimmer     | FOH Truss  |
| 19      | 1        | 19      | Leko 26deg           | Dimmer     | FOH Truss  |
| 20      | 1        | 20      | Leko 26deg           | Dimmer     | FOH Truss  |
| 21      | 1        | 21      | Leko 26deg           | Dimmer     | FOH Truss  |
| 22      | 1        | 22      | Leko 26deg           | Dimmer     | FOH Truss  |
| 23      | 1        | 23      | Leko 36deg           | Dimmer     | FOH Truss  |
| 24      | 1        | 24      | Leko 26deg           | Dimmer     | FOH Truss  |
| 25      | 1        | 25      | Leko 26deg           | Dimmer     | Balcony    |
| 26      | 1        | 26      | Leko 26deg           | Dimmer     | Balcony    |
| 27      | 1        | 27      | Leko 26deg (Logo)    | Dimmer     | Balcony    |
| 28      | 1        | 28      | Leko 26deg (Logo)    | Dimmer     | Balcony    |
| 29      | 1        | 29      | Leko 26deg           | Dimmer     | Balcony    |
| 30      | 1        | 30      | Leko 26deg           | Dimmer     | Balcony    |
| 101     | 1        | 271     | Vari-Lite VL1000 TSD | 27 Channel | FOH Truss  |
| 102     | 1        | 298     | Vari-Lite VL1000 TSD | 27 Channel | FOH Truss  |
| 103     | 1        | 325     | Vari-Lite VL1000 TSD | 27 Channel | FOH Truss  |
| 104     | 1        | 352     | Vari-Lite VL1000 TSD | 27 Channel | FOH Truss  |



| Fixture | Universe | Address | Fixture Type              | Mode         | Position |
|---------|----------|---------|---------------------------|--------------|----------|
| 111     | 2        | 1       | Martin Mac 101            | RGB          | LX4      |
| 112     | 2        | 13      | Martin Mac 101            | RGB          | LX4      |
| 113     | 2        | 25      | Martin Mac 101            | RGB          | LX4      |
| 114     | 2        | 37      | Martin Mac 101            | RGB          | LX4      |
| 115     | 2        | 49      | Martin Mac 101            | RGB          | LX4      |
| 116     | 2        | 61      | Martin Mac 101            | RGB          | LX4      |
| 117     | 2        | 73      | Martin Mac 101            | RGB          | LX4      |
| 118     | 2        | 85      | Martin Mac 101            | RGB          | LX4      |
| 201     | 2        | 97      | Vari-Lite VL3000 Spot     | 28 Channel   | LX4      |
| 202     | 1        | 97      | Vari-Lite VL3000 Spot     | 28 Channel   | LX3      |
| 203     | 1        | 125     | Vari-Lite VL3000 Spot     | 28 Channel   | LX3      |
| 204     | 2        | 125     | Vari-Lite VL3000 Spot     | 28 Channel   | LX4      |
| 301     | 1        | 169     | Martin Mac 250 Krypton    | Extended     | LX2      |
| 302     | 1        | 186     | Martin Mac 250 Krypton    | Extended     | LX2      |
| 303     | 1        | 203     | Martin Mac 250 Krypton    | Extended     | LX2      |
| 304     | 1        | 220     | Martin Mac 250 Krypton    | Extended     | LX2      |
| 305     | 1        | 237     | Martin Mac 250 Krypton    | Extended     | LX2      |
| 306     | 1        | 254     | Martin Mac 250 Krypton    | Extended     | LX2      |
| 401     | 2        | 161     | ChromaQ Colorforce 12     | Mode 9 (4ch) | Floor    |
| 402     | 2        | 165     | ChromaQ Colorforce 12     | Mode 9 (4ch) | Floor    |
| 501     | 1        | 153     | Martin Atomic 3000 Strobe | 4 Channel    | LX1      |
| 502     | 2        | 153     | Martin Atomic 3000 Strobe | 4 Channel    | LX4      |
| 503     | 1        | 157     | Martin Atomic 3000 Strobe | 4 Channel    | LX1      |
| 504     | 1        | 161     | Martin Atomic 3000 Strobe | 4 Channel    | LX1      |
| 505     | 2        | 157     | Martin Atomic 3000 Strobe | 4 Channel    | LX4      |
| 506     | 1        | 165     | Martin Atomic 3000 Strobe | 4 Channel    | LX1      |
| 601     | 1        | 79      | 4 Lite Blinder Cell       | Dimmer       | LX1      |
| 602     | 1        | 80      | 4 Lite Blinder Cell       | Dimmer       | LX1      |
| 603     | 1        | 43      | 4 Lite Blinder Cell       | Dimmer       | LX1      |
| 604     | 1        | 44      | 4 Lite Blinder Cell       | Dimmer       | LX1      |
| 605     | 1        | 45      | 4 Lite Blinder Cell       | Dimmer       | LX1      |
| 606     | 1        | 46      | 4 Lite Blinder Cell       | Dimmer       | LX1      |
| 607     | 1        | 47      | 4 Lite Blinder Cell       | Dimmer       | LX1      |
| 608     | 1        | 48      | 4 Lite Blinder Cell       | Dimmer       | LX1      |
| 901     | 2        | 511     | Radiance Hazer            | 2 Channel    | SR Loft  |

Drawing Name:  
**2D/Plan**

Element:  
**All Lights**

View:  
**Top/Plan**

Drawn by:  
E. Duquette

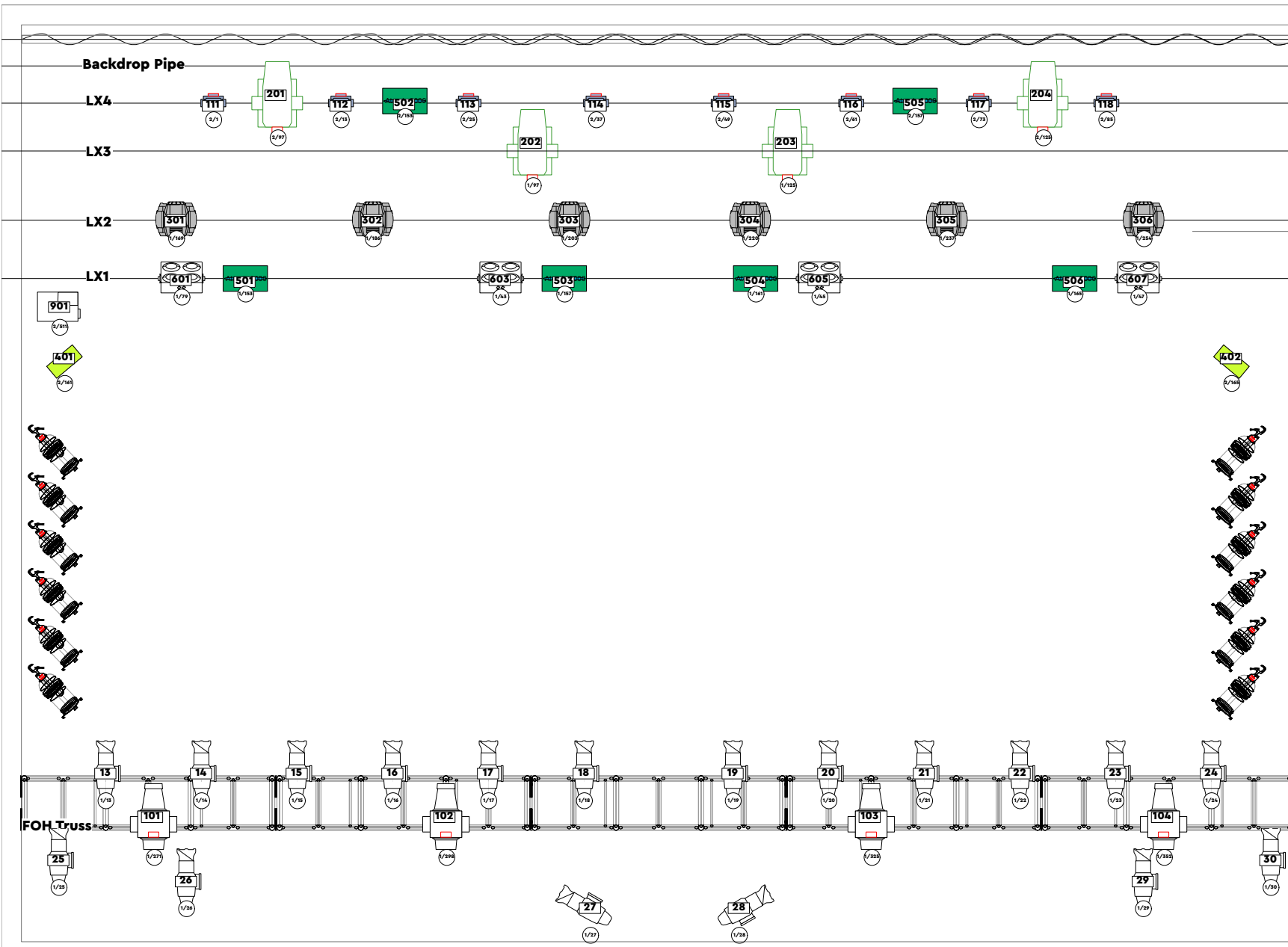
Version:

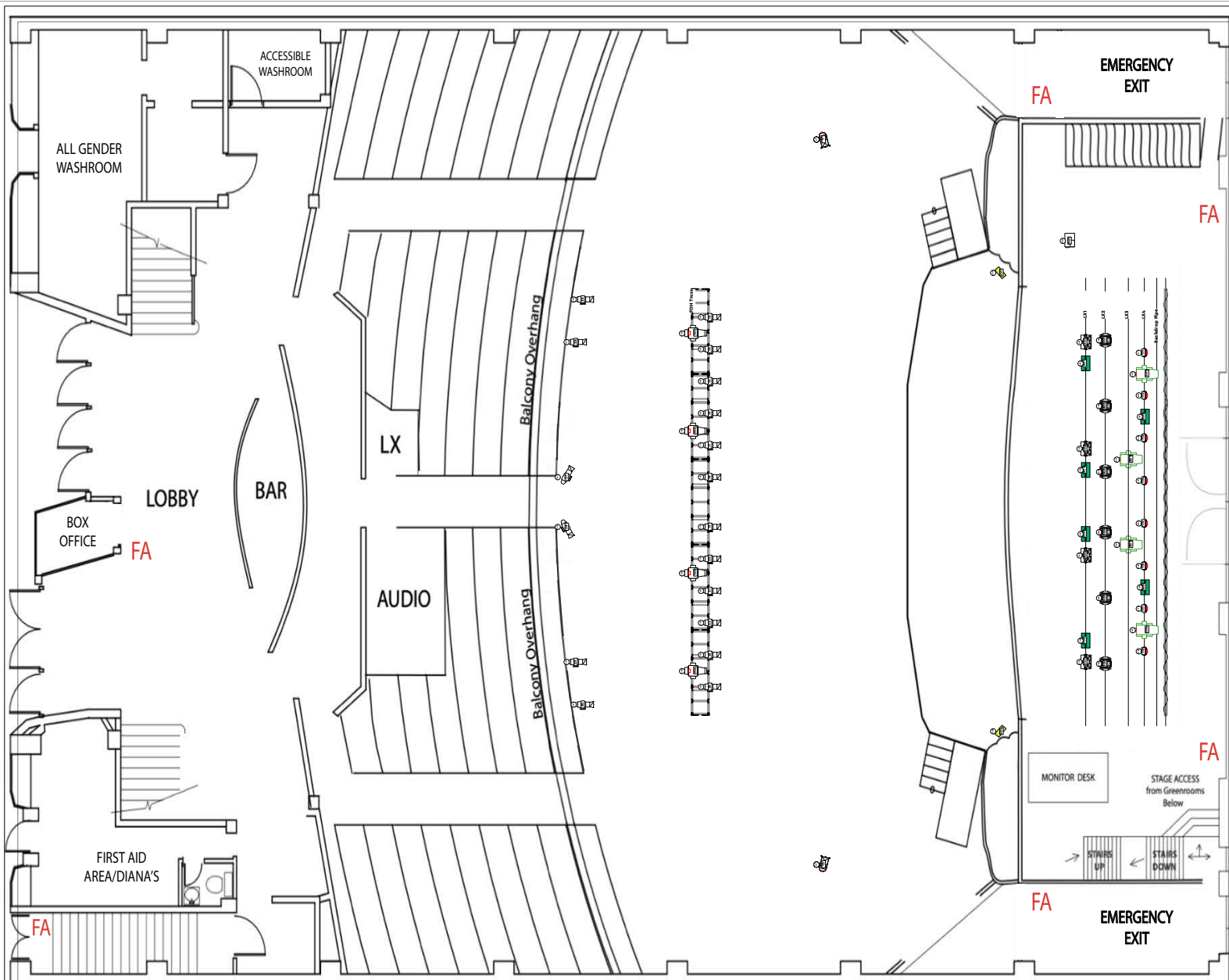
**2024-01-10**

Revision Notes:

Fixture Summary

|  |                                 |    |
|--|---------------------------------|----|
|  | PAR 64 MFL                      | 12 |
|  | ETC Source4 HD 25deg            | 18 |
|  | Varilite VL 1000                | 4  |
|  | Martin MAC 101 RGA              | 8  |
|  | Varilite VL 3000 Spot           | 4  |
|  | MAC 250 KRIPTRON Hung           | 6  |
|  | ChromaQ Color Force 12          | 2  |
|  | Martin Atomic 3000 DMX          | 6  |
|  | Conventional 1 Stage Blender P4 | 4  |
|  | UltraFX Radiance Hazer          | 1  |





# VOGUE THEATRE MRG

Drawing Name: **All Lighting**

Element: **Floor Plan**

View: **Top/Plan**

Drawn by: **E. Duquette**

Scale:

Version:

Date: **2023-01-10**

Revision Notes:

### Fixture Summary

|  |                               |    |
|--|-------------------------------|----|
|  | PAR 64 MFL                    | 12 |
|  | ETC Source4 HID 26deg         | 18 |
|  | Varilite VL 1000              | 4  |
|  | Martin MAC 101 RGB            | 8  |
|  | Varilite VL 3000 Spot         | 4  |
|  | MAC 250 KRYPTON HUNG          | 6  |
|  | ChromaQ Color Force 12        | 2  |
|  | Martin Atomic 3000 DMX        | 6  |
|  | Conventional Stage Blinder P4 | 4  |
|  | UltratecFX Radiance Hazer     | 1  |