



**VIPER™**  
Gaming Mouse  
V560

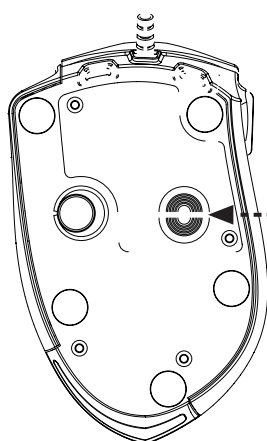


**User Manual**  
Rev 1.2

## Introduction

Thank you for purchasing the Viper V560 gaming mouse. This mouse is designed to perform with incredible precision using a 4G 12000 DPI laser sensor and to be highly customizable with 9 programmable buttons and 5 profiles. Innovative interchangeable side grips and an adjustable weight system not only make this mouse exceptionally ergonomic and functional but also comfortable with extended use.

Onboard macro technology along with an intuitive gaming software provides a platform for gamers to record, read and edit scripts which can be saved and assigned to any specific button on the mouse. This powerful feature helps gamers eliminate repeated and tedious movements when gaming.



### ! Safety Notice

This product complies with IEC 60825-1, Class IM laser product.  
Your product complies with FCC and CE rules.



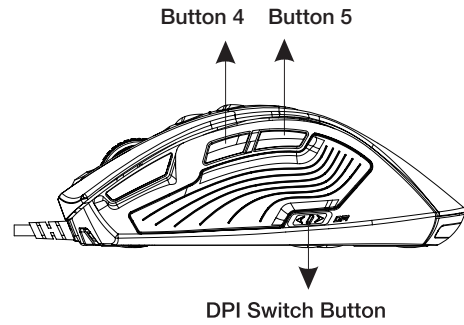
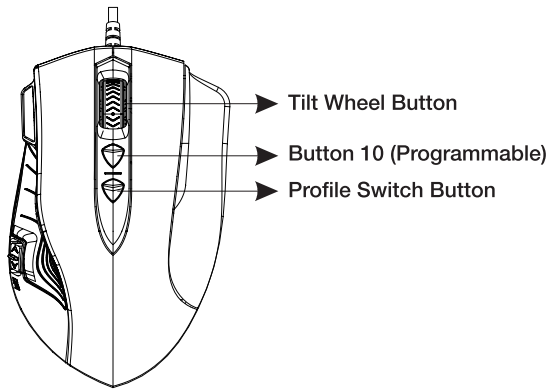
Please DO NOT direct the laser beam at anyone's eye.

## Features / Technical Specifications:

- Unique 9 programmable buttons plus 5 gaming profiles to customize gamers' desired scripts.
- 16 bit ultra-data path for ultimate performance.
- Polling rate 1000Hz.
- USB connector.
- Adjustable weight system, up to 29.4g.
- 800/1600/2400/3200 DPI switchable. (Max. to 12000 DPI)
- 4-way scrolling.
- 4G laser sensor. (12000 Frame Rate)
- Tracking Speed: 150 inch/sec.
- Button click life-cycle: 5 Million clicks.
- Durable ceramic footpads.
- Interchangeable side grips.

## Package Contents:

- Viper 560 gaming mouse
- Manual
- Viper Sticker



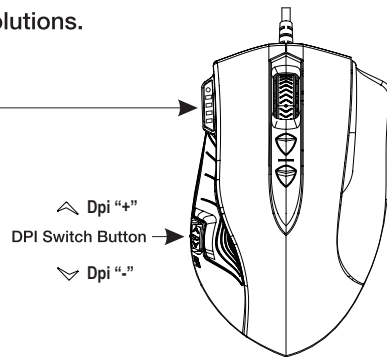
## DPI Settings

1. Press the DPI switch button to change to different resolutions.
2. The default DPI settings are:

### DPI Light Indicator

- \*800D PI: One White LED "ON"
- \*1600 DPI: Two White LED "ON"
- \*2400 DPI: Three White LED "ON"
- \*3200 DPI: Four White LED "ON"

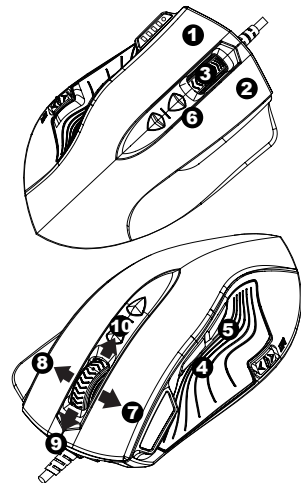
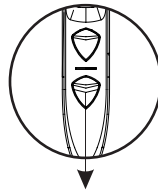
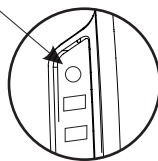
3. User can change default DPI settings from 50~12000 DPI with the Viper gaming software.



## Gaming Mode Settings

1. There are 9 programmable gaming buttons.
2. There are 5 profiles for each gaming button that users can assign a macro function to.
3. The profile switch button is on the top of the mouse (marked as Mode).

### Profile RGB light indicator



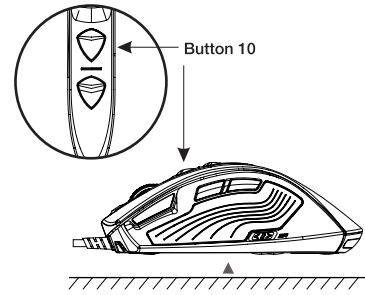
\* Users can record a macro or assign a built-in function from the script library, then save and assign the macro or function to one of the available profiles and 9 programmable buttons.

\* The gaming buttons (4 & 5) are set to Internet forward & backward by default.

## Adjust Lift Button

To optimize the vertical distance from the surface to stop the cursor from moving, please follow the below steps:

1. Place the mouse on a flat surface.
2. Press and hold "button 10".
3. Move the mouse on the surface as thoroughly as possible while pressing "button 10". Do not lift the mouse off the surface, or you will need to re-start this process.
4. While the mouse is collecting the surface information, the DPI LED will blink. After the DPI LED stops blinking, release "button 10".



### Caution:

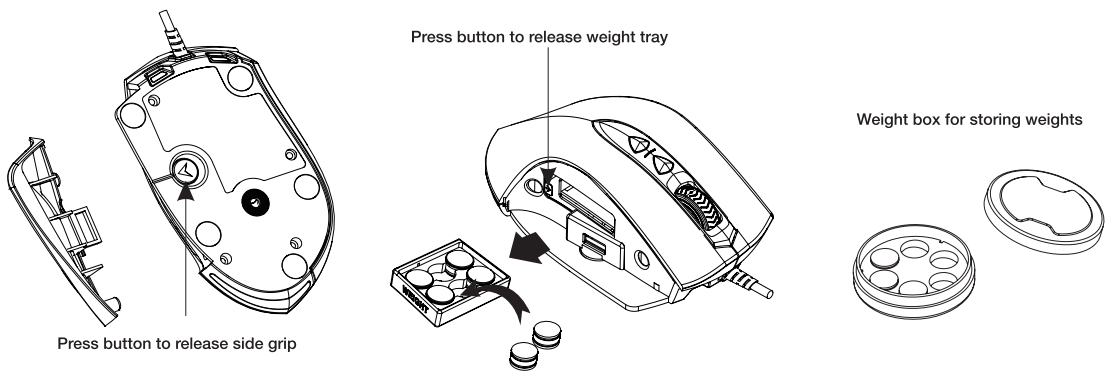
While the mouse is in the air, do not release "button 10", or the cursor will stop.

If this happens there are 2 ways to recover:

- (1) Unplug and re-plug the mouse.
- (2) Press and hold "button 10" while the mouse is on a flat surface, lift the mouse off the surface, and then release "button 10".

## Adjustable Weight Cartridge

Adjust the weight and balance (up to 29.4 grams) to achieve the best level of comfort.



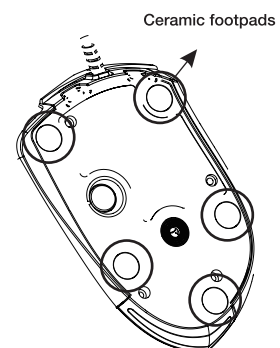
### Note:

- Keep the weights out of children's reach.

## Ceramic Footpads

The mouse is fitted with ceramic footpads which offers a superior glide and ultra durable, non-wear surface.

Please choose a high-performance mouse pad to fully experience the characteristics of the ceramic footpads.



---

## 1. Hardware Installation

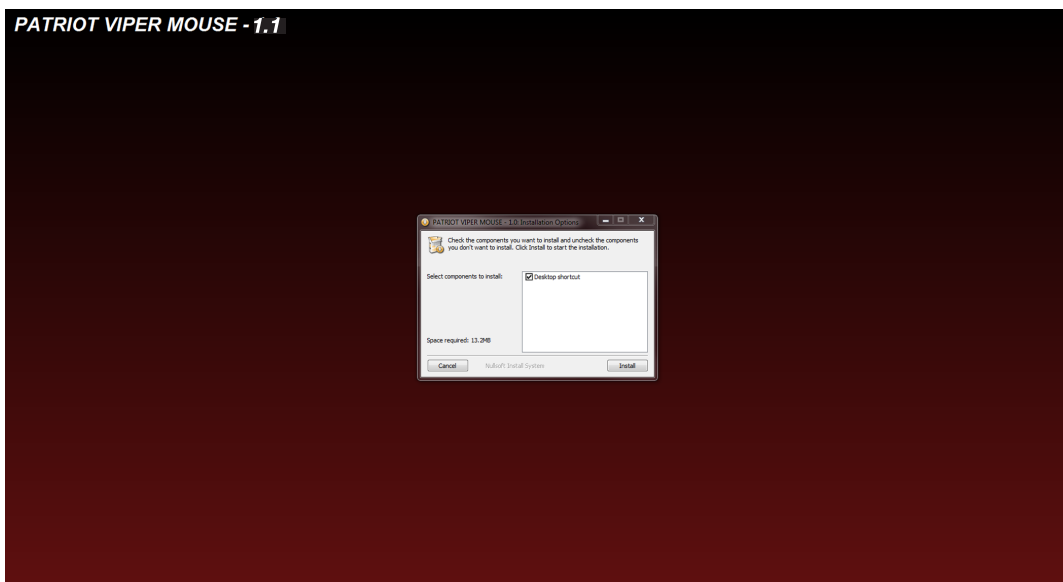
Connect the Mouse to computers USB port.  
Wait 5~10 seconds for the mouse to be recognized by the computer.

## 2. Software Installation

Please download the mouse software from [http://www.patriotmemory.com/need to insert.pdf](http://www.patriotmemory.com/need%20to%20insert.pdf) to adjust the gaming buttons, settings and DPI adjustment. The tilt wheel function will be activated only after the gaming software is installed.

### Software Installation Instructions

Once downloaded, double click on the software to start the installation. Follow the onscreen instructions to finish the process.



## Button Settings Instruction



Viper V560 offers five (5) profiles to save button assignment and macro scripts. Every profile can be customized with a specific color from the available 64 colors to quickly identify the profile when using the mouse. Additionally, each profile is able to record up to 9 macro scripts.

### Profile Selection & Naming

- Move the cursor over the Profile. Clicking it will define the profile color as one of 64 color options.
- Each profile represents a customizable button setting group. Users can define each profile according to different games.

Note: The profile name is limited to a maximum of 8 characters.

### Button Settings

1. Double-click on any profile to change its name.
2. Move the cursor to the button settings area to customize any button through either the assigned pop-up menu or customized macro list.
3. You may change any one of the 9 gaming buttons to a different functionality.

Note: The computer will automatically save all assigned button functions into the mouse once the settings in the pop-up menu or customized macro list has been changed.

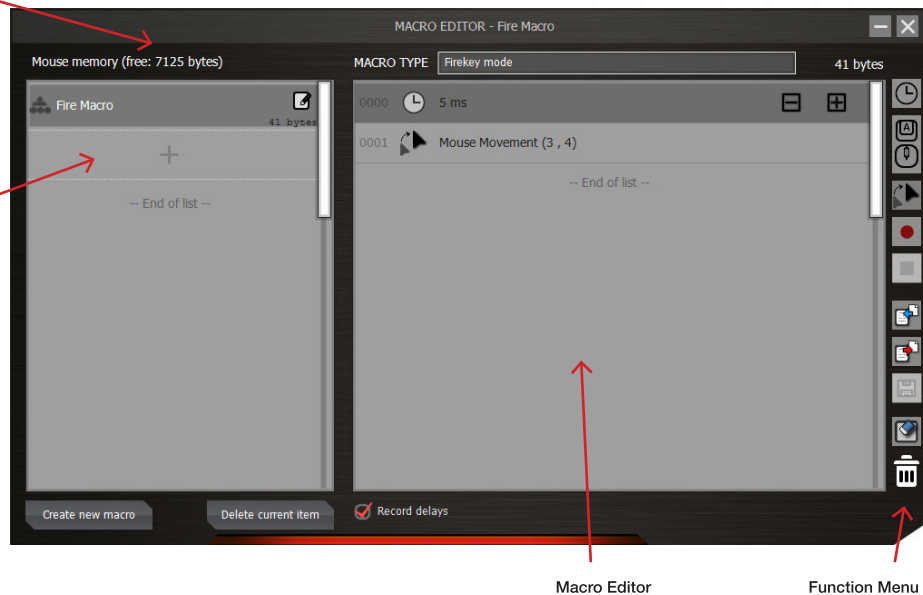


## Macro Settings

The macro settings include four windows.

Memory Indicator

Macro List Window



Macro Editor

Function Menu



### Macro List Window

Macro List has maximum 64 lines to be set up by users. Every macro can be named and saved to indicate the meaning or function of macro.

Note: A maximum 14 letters or characters are allowed on each line.

## Macro Editor Window

This window is to allow recording of all the keyboard and mouse commands through this powerful recording function.

-  **Start / Stop Recording:**  
Click here to start recording keyboard or mouse functions for macros. Once finished recording, stop the recording before taking any further action. To stop recording, just click the stop button.
-  **Clear:**  
Click to clear the selected commands after recording.

Choose from one of the commands in Macro Type: (Loop mode, Firekey mode or One-time mode). Move the cursor and point to the first line of Macro Editor Window, then double-click to start entering the macro commands.

**Excute One Time:**  
The recorded script will be executed once.

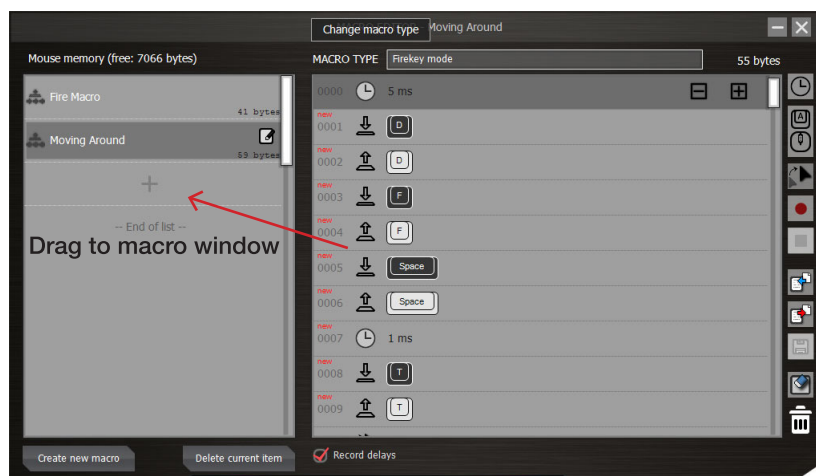
**Run Loop:**  
If this function is marked to be active, the recorded script will be executed repeatedly when pressing the assigned gaming button. The default is set to "NOT active".

**Firekey mode:**  
Firekey function can be assigned to achieve specific firing key or mouse movement.

**Duration :**  
This function allows the desired recording duration of a command or intervals between two commands. The default is set to "active". You can cancel it if it is unnecessary to record the duration.

**Duration ms (0.001 second):**  
Double click this button to modify the duration time manually.

Once finished, drag the script from Macro Editor Window to Macro List Window, then name and save it.





## Import Macro / Script:



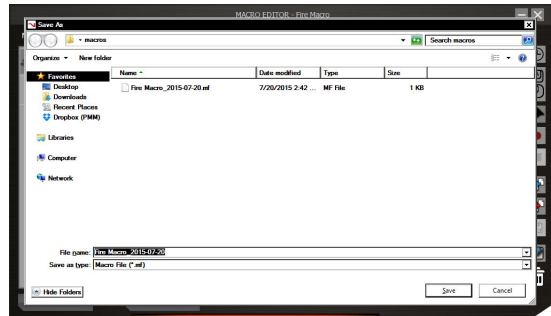
To “Import” scripts or macros, select this button and save the scripts or macros to the mouse.



## Export Macro / Script :



Click “Export” to save the scripts or macros created.



## Function Button Window



### Recycle:

Select and drag a specific script to the “Recycle” button to delete it.



### Insert Delay:

Drag this button to the Macro Editor area and insert between two scripts. Double click to enter the duration time in milliseconds.



### Insert Keyboard, Mouse or Scroll Commands:

Use this button to enter a script from the keyboard, mouse or scroll. Once finished, the command will show in the Macro Editor area.



### Insert Mouse Movement:

Click this button to edit the mouse movement to a predetermined spot.

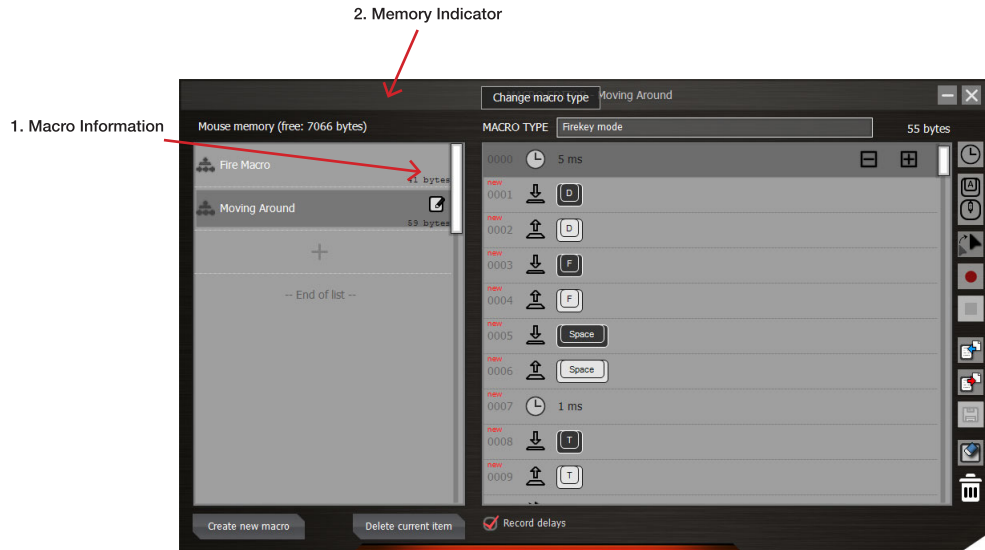


### Clear Command List:

Click this button to clear all the script commands in the macro editor area.

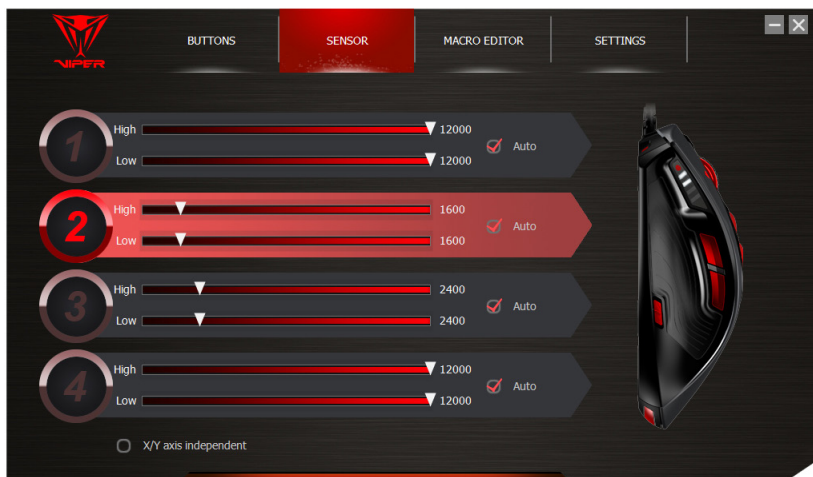
## Macro Status Indicator

1. Indicates which profile(s) is using the assigned macro, and how much memory each macro uses.
2. Memory Indicator Window.



## DPI Configuration

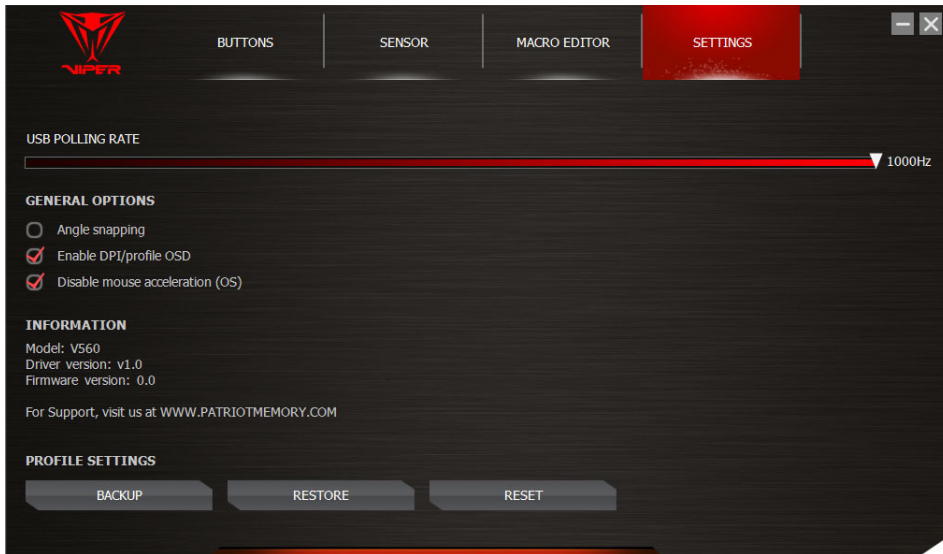
The mouse provides a dedicated 4 level resolution switch. The default is set to 800/1600/2400/3200. The resolution can be modified from 50 DPI to 12000 DPI and assigned to any one of the 4 levels. The X axis and Y axis resolutions can also be set to operate independently.



---

## Settings

On the settings tab, the pooling rate, angle snapping, DPI profile and mouse acceleration can be modified.



### Pooling Rate:

Changing the pooling rate will determine how often the mouse sends information to the computer. The pooling rate can be changed from 125Hz to 1000Hz.

### Angle Snapping:

Enabling angle snapping will force the mouse to create a straighter line movement between point A to point B.

### Enable DPI/profile OSD:

Enabling this option will display the DPI setting on the upper left corner of the monitor when changing the DPI of the mouse.

### Disable mouse acceleration:

Disabling mouse acceleration will force the mouse to react in a 1:1 ratio between the mouse movements and the cursor on the monitor. When enabled, the mouse's acceleration will become relative to how fast the mouse travels on the monitor.

## FCC and Legal:

This equipment has been tested and found to comply with the limits for a Class B digital device, pursuant to Part 15 of the FCC Rules. These limits are designed to provide reasonable protection against harmful interference in a residential installation. This equipment generates uses and can radiate radio frequency energy and, if not installed and used in accordance with the instructions, may cause harmful interference to radio communications.

However, there is no guarantee that interference will not occur in a particular installation. If this equipment does cause harmful interference to radio or television reception, which can be determined by turning the equipment off and on, the user is encouraged to try to correct the interference by one of the following measures:

- Reorient or relocate the receiving antenna.
- Increase the separation between the equipment and receiver.
- Connect the equipment into an outlet on a circuit different from that to which the receiver is connected.
- Consult the dealer or an experienced radio/TV technician for help.

### FCC NOTICE:

This device complies with Part 15 of the FCC Rules. Operation is subject to the following two conditions:

1 This device may not cause harmful interference, and 2 This device must accept any interference received, including interference that may cause undesired operation.

### FCC CAUTION:

- Any changes or modifications not expressly approved by the party responsible for compliance could void the user's authority to operate this equipment.
- This device and its antenna(s) must not be co-located or operating in conjunction with any other antenna or transmitter.

## Safety Guidelines:

In order to achieve maximum safety while using your Viper 560 gaming mouse, we suggest that you adopt the following guidelines:

1. Avoid looking directly at the tracking beam of your mouse or pointing the beam in anyone else's eye. Note that the tracking beam is NOT visible to the naked human eye and is set on an Always-On mode.
2. Should you have trouble operating the device properly and troubleshooting does not work, unplug the device and go to [www.patriotmemory.com](http://www.patriotmemory.com) for support. Do not attempt to service or fix the device yourself at any time.
3. Do not take apart the device (doing so will void your warranty) and do not attempt to operate it under abnormal current loads.
4. Keep the device away from liquid, humidity or moisture. Operate the device only within the specific temperature range of 0°C (32°F) to 40°C (104°F). Should the temperature exceed this range, unplug and switch off the device in order to let the temperature stabilize to an optimal level.

### CLASS 1M LASER PRODUCTS

International standards and safety. **INVISIBLE LASER RADIATION: DO NOT VIEW DIRECTLY WITH OPTICAL INSTRUMENTS.** Class 1M laser products comply with International Standard IEC 60825-1 Ed 2: 2007, Class 1M Laser Product invisible and also complies with 21CFR 1040.10 and 1040.11 except for deviations pursuant to Laser Notice No. 50, dated June 24, 2007.

### SAFETY AND USAGE GUIDELINES FOR LASER PRODUCTS

Do not direct laser beam toward eye. For Class 1M laser products, viewing laser output with optical instruments (e.g., eye loupes, magnifiers and microscopes) within a distance of 100mm may pose an eye hazard.



Assembled in China.



The "P" logo is a registered trademark of Patriot Memory, LLC

All rights reserved. Patriot Memory, and the Patriot Memory logo are registered trademarks of Patriot Memory. All other trademarks are the property of their respective owners. Patriot assumes no responsibility for any errors that may appear in this manual. Manufacturer shall not in any way liable for any damage you or any third party may suffer as a result of use or misuse our product. Information contained herein is subject to change without notice.

[www.patriotmemory.com](http://www.patriotmemory.com)

