

MANUAL

for returning a vehicle
Business Lease



BUSINESS LEASE
PASSION FOR MOBILITY

www.businesslease.cz

Manual for returning a vehicle

HOW SHALL I MEET THE DEADLINE FOR RETURNING A VEHICLE?

To return a vehicle please contact our **Call Centrum Business Lease, phone: +420 724 556 655, or e-mail vraceni.vozu@businesslease.cz, where the exact terms for returning a vehicle will be agreed with you.**

Please, agree to the terms for returning a vehicle sufficiently in advance (however 5 days before returning a vehicle at the latest). The terms are binding both for you and for your independent professional partner. If you are unable to meet the deadline for returning a vehicle, please let us know by 5 p.m. of the working day prior to the deadline. If the deadline is not met and is not cancelled in advance, will be charged according to the Price list of administrative acts of the Business Lease.

WHERE SHALL I RETURN THE VEHICLE?

The vehicle shall be returned to one of the vehicle return Centres (see www.businesslease.cz) unless agreed otherwise. If you need to return the vehicle at your address or another place we will be happy to provide this service for you. This service will be charged according to the Price list of administrative acts of the Business Lease.

HOW IS THE VEHICLE CHECKED AND HOW MUCH TIME DO I NEED?

The vehicle is checked by an independent professional partner. The time required for the vehicle takeover is 45 minutes.

WHICH DOCUMENTS SHALL I PREPARE FOR RETURNING A VEHICLE?

- Complete vehicle documentation (ORV – formerly the small registration document, or Registration document, Green Card – the document on the conclusion of the third party risks liability insurance, motorway vignette control coupon)
- Refuelling cards (CCS, Shell etc., if in the ownership of BL)
- Road assistance service card
- Maintenance service record book of the vehicle
- Complete board literature supplied to the vehicle (vehicle service manual, car stereo including the security code and/or radio pass, etc.)

WHAT EQUIPMENT DO I NEED TO PREPARE FOR RETURNING A VEHICLE?

- Mandatory equipment
- Supplementary equipment (e.g. roof rack, snow chains, roof box, cycle carrier, etc...)
- Removable radio panel, GPS data carrier or another infotainment data carrier (if installed in the vehicle)
- Complete set of keys (vehicle keys including the nameplate with codes, key to the speed-change box locks including the nameplate with codes, trailer towing device keys, roof racks, etc.) if installed on the vehicle.
- Safety key to wheel bolts or nuts, spare wheel including the jack and the tyre repair kit
- Seasonal tyres if supplied with the vehicle. If you are unable to collect the seasonal tyres we will be happy to do this for you. Please, just provide us with the warehouse bill. The tyre collection will be charged according to the Price list of administrative acts of the Business Lease.
- Original wheel covers (if installed on the vehicle)

Please note, that we are entitled to charge for any loss caused to damaged/missing vehicle accessories.

HAVE I FORGOTTEN MY PERSONAL THINGS IN THE VEHICLE?

Please make sure that your personal things are not left in the vehicle (e.g. sunglasses, pendants, clothing, CD, memory cards, etc.) Unfortunately, we cannot guarantee their return.

IN WHAT SHAPE SHOULD I RETURN THE VEHICLE?

Your vehicle should be in a clean condition, including the interior.

In case you have not managed to clean the vehicle, we will get the vehicle cleaned for you in order to check its condition. Vehicle cleaning is charged according to the Price list of administrative fees. This fact will be recorded in the completion report. If other damages are found to the vehicle after cleaning they are to be recorded in the completion report and this record will be sent to you including pricing. Additional costs of the vehicle inspection made by an independent professional partner will be charged according to the Price list of administrative acts of the Business Lease.

We recommend comparing the condition of vehicle damage with the manual for returning a vehicle sufficiently in advance prior to returning a vehicle; this manual contains individual model damages (list of acceptable/unacceptable damages) and the photo-documentation.

In case of unacceptable vehicle damage we recommend recording any insurance event at hlaseniskod.businesslease.cz/damage and getting the vehicle repaired even before its return and leasing contract termination. Any unacceptable damages will be assessed by an independent professional partner, who will quantify the damage's impact on the selling value of the vehicle and this amount will be re-invoiced to you. No vehicle repairs can be made following the vehicle's return.

Before returning, remove from the vehicle's "infotainment" all personal information: telephone contacts, addresses from navigation, GPS locations, etc. In most cases this is a matter of setting the vehicle in the menu to "factory settings".

Remove any decals and stickers:

In case there are any decals or stickers on your vehicle, they must be removed before returning it unless agreed otherwise. In case you have no possibility to remove decals or stickers in a professional way, please contact us and we will remove the decals or stickers ourselves. The amount charged for removing decals and stickers is a part of a vehicle's damage quantification after its return.

AM I ALLOWED TO RETURN A DAMAGED VEHICLE?

If you return damaged vehicle, an independent partner shall prepare a report specifying any acceptable and unacceptable vehicle damage. A report with specified damages will consequently be sent to you within 3 working days.

In case you need to comment regarding the vehicle damage complaint you have the possibility to express your statement within 5 working days to the e-mail: reklamace.vracenivozu@businesslease.cz.

If another vehicle inspection is necessary then your participation is required within 5 working days from the moment our company receives the complaint. The vehicle inspection will take place in the vehicle return centre in Prague. If you do not attend the second vehicle inspection we cannot accept your complaint.

If you decide to get the vehicle repaired during the assessment of the vehicle damage condition, you have the possibility to interrupt the process, leave and get the vehicle repaired. The vehicle return process will be considered incomplete and will be charged according to the Price list of administrative acts of the Business Lease.

Following completion of the repairs please book a new term to return the vehicle.

The definition of unacceptable damage



I. Bodywork and paint

The definition of unacceptable damages for **personal cars** and light commercial vehicles (**LCV**) up to 24 months old and older

Terms	Definitions
Dents	Dents or bulges a part of the bodywork visible when viewed ordinarily
A slight deformation	A bodywork deformation, which only is clearly visible in case of a careful investigation – acceptable

Part	Number of the definition	Damages	Vehicle category	
			Car within 24 months	Car over 24 months
I. Bodywork and paint	I. I	Polishable paint damage	acceptable	acceptable
	I. II	Non-polishable paint damage	over 3 cm	over 5 cm
	I. III	Non-polishable paint damage – number regardless of dimensions	2 and more	2 and more
		Damaged painting to the primer	not accepted	not accepted
	I. IV	Dent	over 2 cm	over 2 cm
	I. V	Dent – number regardless of dimensions	2 and more	2 and more
	I. VI	Paint chipping caused by stones – number of pcs per area 15 × 15 cm	5 and more	5 and more
	I. VII	Corrosion at any stage or extension	not accepted	not accepted
	I. VIII	Unprofessional repair – visibly repaired damages	not accepted	not accepted
I. IX	Flaked or otherwise deteriorated paint	not accepted	not accepted	

Part	Number of the definition	Damages	Vehicle category	
			LCV within 24 months	LCV over 24 months
I. Bodywork and paint	I. I	Polishable paint damages	accepted	accepted
	I. II	Non-polishable paint damages	over 5 cm	over 10 cm
	I. III	Non-polishable paint damages – number regardless of dimensions	2 and more	5 and more
		Paint damage – to the undercoat	not accepted	not accepted
	I. IV	Dent	over 2 cm	over 5 cm
	I. V	Dent – number regardless of dimensions	2 and more	5 and more
	I. VI	Paint chipping caused by stones – number of pcs per area 15 × 15 cm	5 and more	5 and more
	I. VII	Corrosion at any stage or extent	not accepted	not accepted
	I. VIII	Unprofessional repair – visibly repaired damages	not accepted	not accepted
I. IX	Flaked or otherwise deteriorated paint	not accepted	not accepted	

I. Bodywork and paint

The definition of the unacceptable damages for **personal cars** and **LCV** up to 24 months old and older

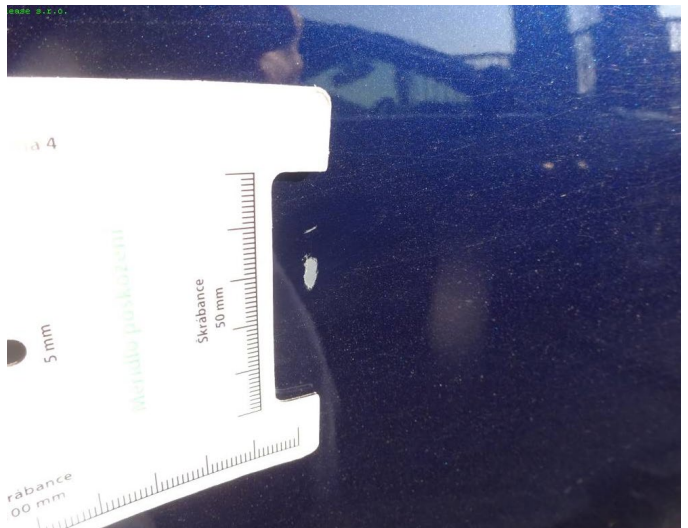
Personal car - I.I. - Acceptable

Personal car - I.II. - within 24 - Unacceptable



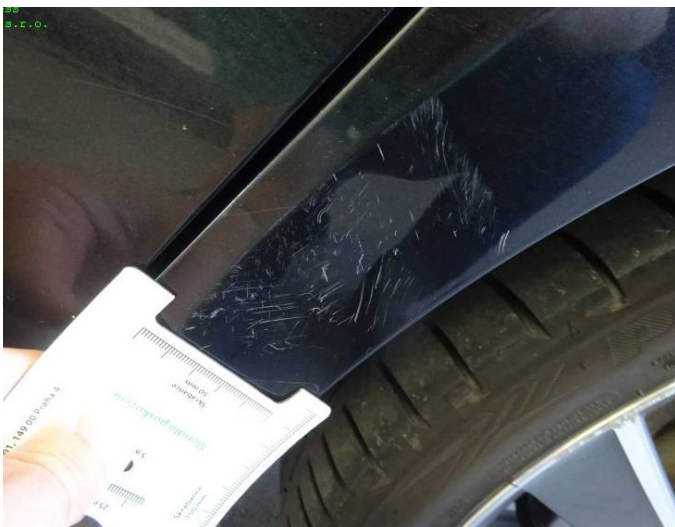
Personal car - I.II. - over 24 - Unacceptable

Personal car - I.II. - over 24 - Acceptable



Personal car - I.III. - within 24 - Unacceptable

Personal car - I.III. - within 24 - Unacceptable



I. Bodywork and paint

The definition of the unacceptable damages for **personal cars** up to 24 months old and older

Personal car – I.III. – over 24 – Unacceptable



Personal car – I.IV. – within 24 – Unacceptable



Personal car – I.IV. – over 24 – Acceptable



Personal car – I.III. – over 24 – Unacceptable



Personal car – I.IV. – over 24 – Unacceptable



Personal car – I.IV. – over 24 – Acceptable



I. Bodywork and paint

The definition of the unacceptable damages for **personal cars** up to 24 months old and older

Personal car – I.IV. – within 24 – Unacceptable

Personal car – I.V. – over 24 – Unacceptable



Personal car – I.VI. – Unacceptable



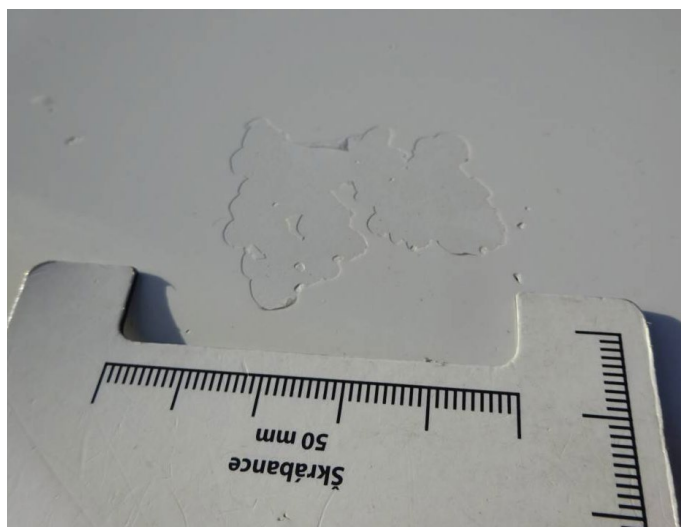
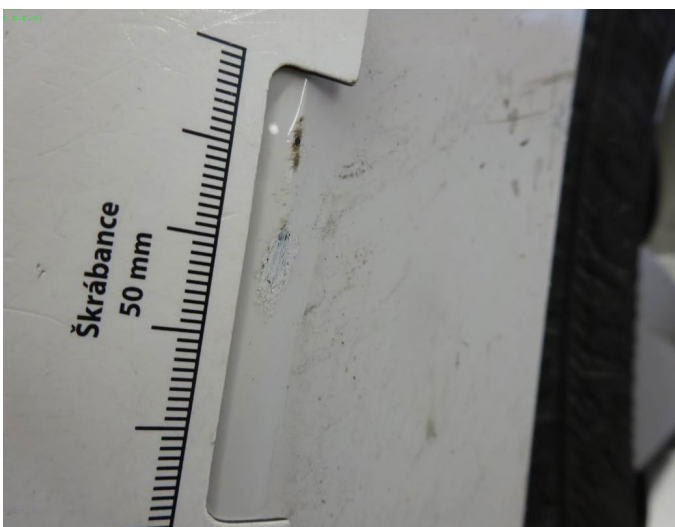
Personal car – I.VII. – Unacceptable



Personal car – I.VIII. – Unacceptable



Personal car – I.IX. – Unacceptable



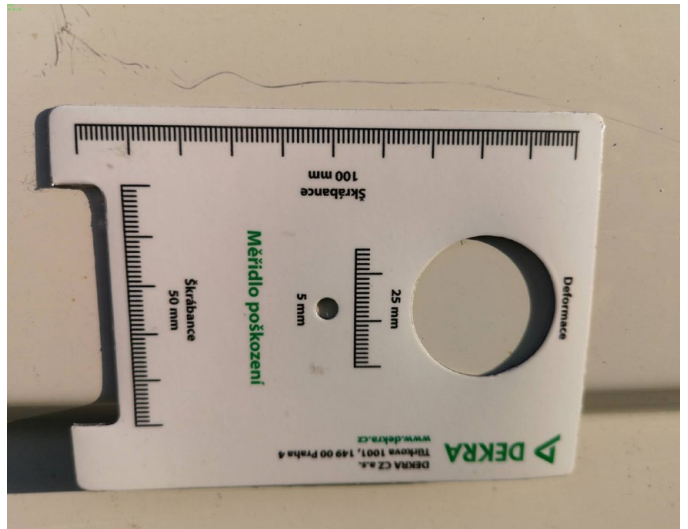
I. Bodywork and paint

The definition of the unacceptable damages for LCV up to 24 months old and older

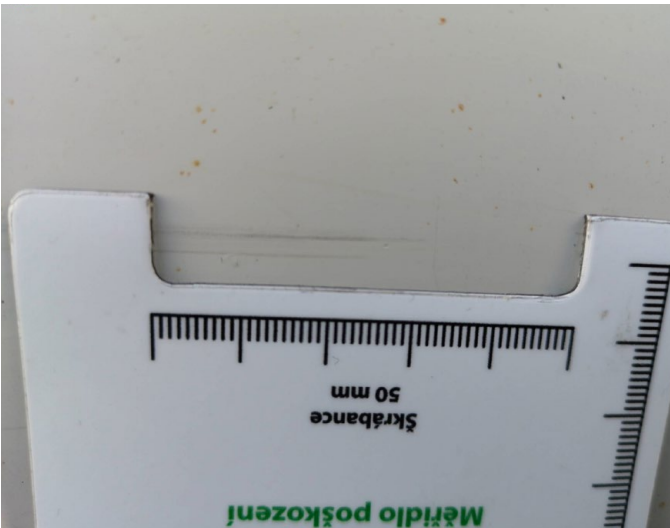
LCV - I.I. - Acceptable



LCV - I.II. - within 24 - Unacceptable



LCV - I.II. - within 24 - Acceptable



LCV - I.II. - over 24 - Unacceptable



LCV - I.II. - over 24 - Acceptable



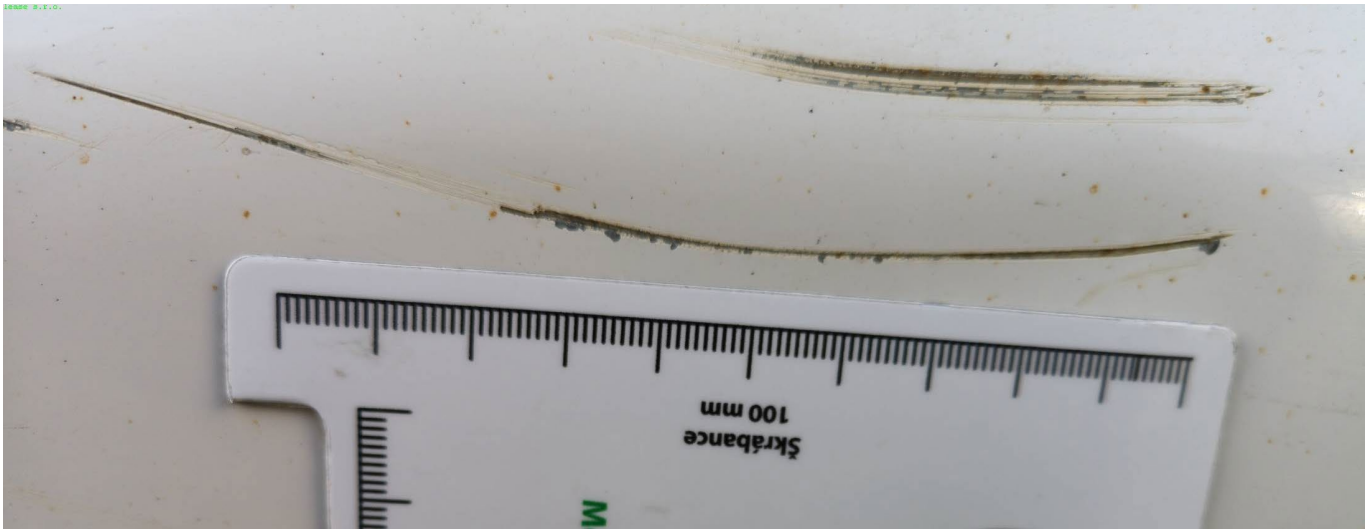
LCV - I.III. - within 24 - Unacceptable



I. Bodywork and paint

The definition of the unacceptable damages for LCV up to 24 months old and older

LCV - I.II. - over 24 - Unacceptable



LCV - I.IV. - within 24 - Unacceptable

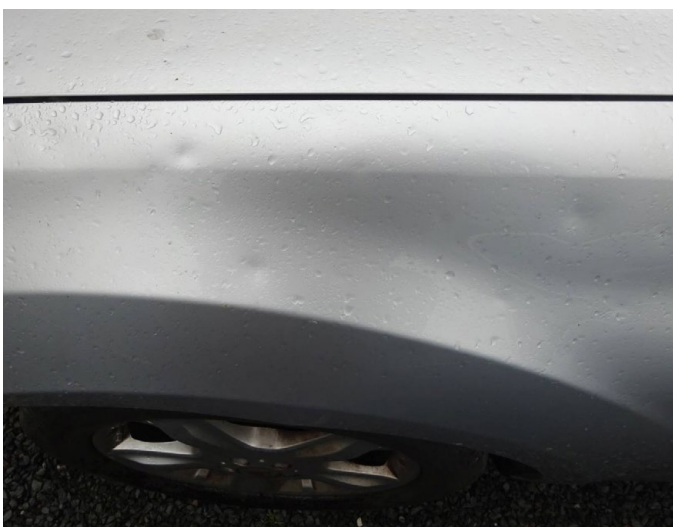
LCV - I.IV. - over 24 - Unacceptable



LCV - I.V. - within 24 - Unacceptable



LCV - I.VI. - Unacceptable



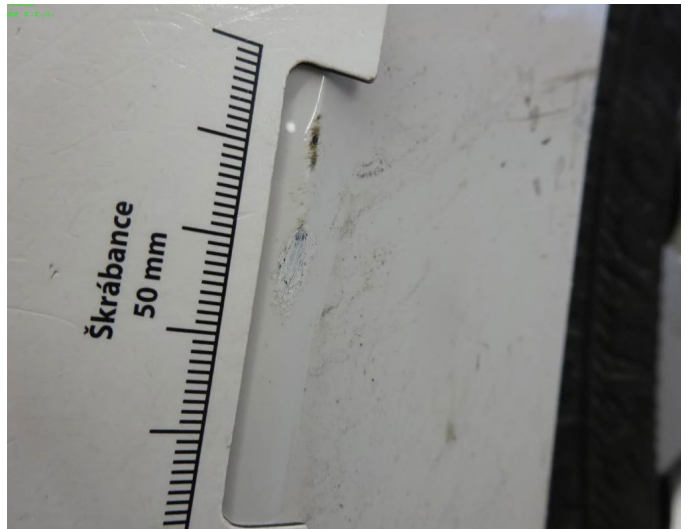
I. Bodywork and paint

The definition of the unacceptable damages for LCV up to 24 months old and older

LCV – I.VII. – Unacceptable



LCV – I.VIII. – Unacceptable



LCV – I.IX. – Unacceptable



II. Unpainted parts

The definition of unacceptable damages for **personal cars** and **LCV** up to 24 months old and older

Terms	Definitions
Dents	Dents or bulges on a part of the bodywork clearly visible
A slight deformation	A bodywork deformation, which only is clearly visible in case of a careful investigation – acceptable

Part	Number of the definition	Damages	Vehicle category	
			Car within 24 months	Car over 24 months
II. Unpainted parts	II. I	Damage that cannot be repaired by plastic renovation	over 3 cm	over 5 cm
	II. II	Damage that cannot be repaired by plastic renovation – number regardless of dimensions	2 and more	2 and more
	II. III	Dents	over 2 cm	over 2 cm
	II. IV	Dent – number regardless of dimensions	2 and more	2 and more
	II. V	Crack	not accepted	not accepted
	II. VI	Broken parts	not accepted	not accepted
	II. VII	Unprofessional repairs – visibly repaired damages	not accepted	not accepted

Part	Number of the definition	Damages	LCV category	
			LCV within 24 months	LCV over 24 months
II. Unpainted parts	II. I	Damage that cannot be repaired by plastic renovation	over 5 cm	over 10 cm
	II. II	Damage that cannot be repaired by plastic renovation – number regardless of dimensions	2 and more	5 and more
	II. III	Dent	over 2 cm	over 5 cm
	II. IV	Dent – number regardless of dimensions	2 and more	5 and more
	II. V	Crack	not accepted	not accepted
	II. VI	breaking off	not accepted	not accepted
	II. VII	improper repair – visibly repaired damages	not accepted	not accepted

II. Unpainted parts

The definition of the unacceptable damages for **personal cars** up to 24 months old and older

Personal car – II.I. – within 24 – Unacceptable



Personal car – II.I. – over 24 – Unacceptable

Personal car – II.I. – over 24 – Acceptable



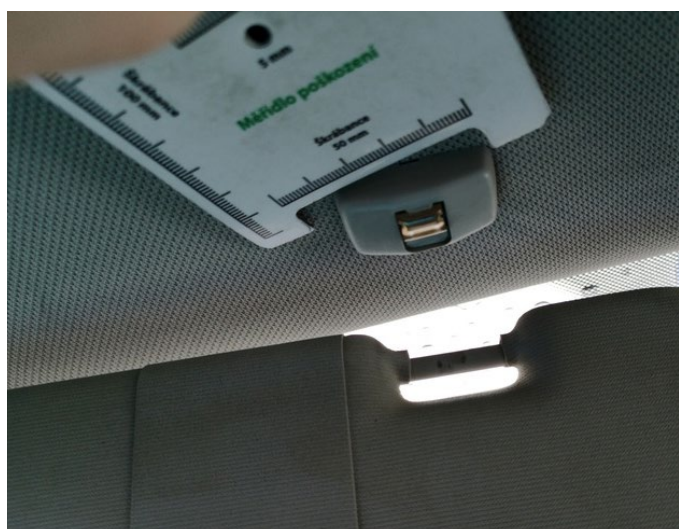
Personal car – II.II. – over 24 – Unacceptable



Personal car – II.III. – Unacceptable



Personal car – II.V. – Unacceptable



II. Unpainted parts

The definition of the unacceptable damages for **personal cars** and **LCV** up to 24 months old and older

Personal car - II.VI. - Unacceptable

Personal car - II.VII. - Unacceptable



LCV - II.I. - within 24 - Unacceptable

LCV - II.I. - within 24 - Unacceptable



LCV - II.I. - over 24 - Acceptable

LCV - II.II. - within 24 - Unacceptable



II. Unpainted parts

The definition of the unacceptable damages for LCV up to 24 months old and older

LCV – II.III. – within 24 – Unacceptable



LCV – II.III. – over 24 – Acceptable



LCV – II.III. – over 24 – Unacceptable



LCV – II.V. – Unacceptable



LCV – II.VI. – Unacceptable



LCV – II.VII. – Unacceptable



III. Glass, lights, mirrors

The definition of unacceptable damages for **personal cars** and **LCV** up to 24 months old and older

			Vehicle category	
Part	Number of the definition	Damages	Car within 24 months	Car over 24 months
III. Glass, lights, mirrors	III. I	Windscreen with chips (no glass cracks) caused by stones.	accepted	accepted
		Glued windscreen repairs – with supplied repair certificate	accepted	accepted
	III. II.	Cracks or splits of glass, lights and mirrors	not accepted	not accepted
	III. III.	Broken glass, lights, mirrors	not accepted	not accepted
	III. IV.	Non-functional glass without any external damage (broken bulb, fuse)	accepted	accepted
	III. V	Unprofessionally applied or damaged sun protection or tinted straps above the windscreen	not accepted	not accepted
	III. VI	Scratched glass, lights, mirrors	over 2 cm	over 2 cm
Part	Number of the definition	Damages	LCV within 24 months	LCV over 24 months
III. Glass, lights, mirrors	III. I	Chipping caused by stones to windscreen without any glass cracks	accepted	accepted
		Windscreen repair by gluing – with supplied repair certificate	accepted	accepted
	III. II.	Cracks or splits of glass, lights and mirrors	not accepted	not accepted
	III. III.	Broken glass, lights, mirrors	not accepted	not accepted
	III. IV.	Non-functional glass without any external damage (broken bulb, fuse)	accepted	accepted
	III. V	Unprofessionally applied or damaged sun protections or tinted straps above the windscreen	not accepted	not accepted
	III. VI	Scratched glass, lights, mirrors	over 2 cm	over 2 cm

III. Glass, lights, mirrors

The definition of the unacceptable damages for **personal cars** up to 24 months old and older

Personal car – III.II. – Unacceptable



Personal car – III.II. – Unacceptable

Personal car – III.I. – Acceptable



Personal car – III.III. – Unacceptable



Personal car – III.V. – Unacceptable



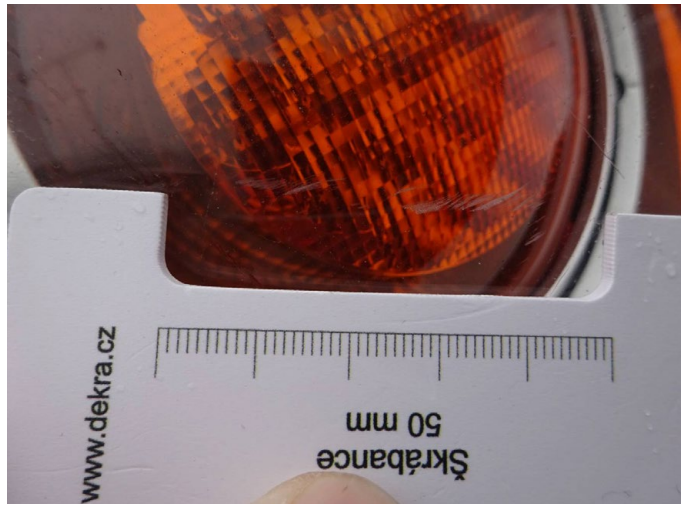
Personal car – III.VI. – over 24 – Acceptable



III. Glass, lights, mirrors

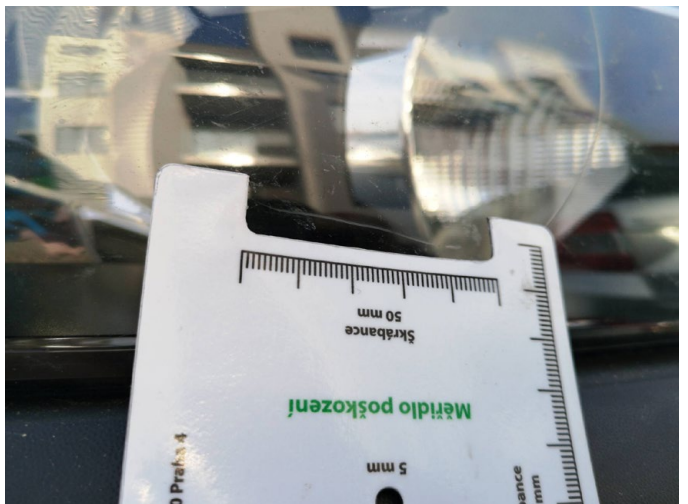
The definition of the unacceptable damages for **personal cars** up to 24 months old and older

Personal car – III.VI. – Unacceptable



LCV – III.VI. – within 24 – Acceptable

The definition of the unacceptable damages for **LVC** up to 24 months old and older



LCV – III.VI. – over 24 – Unacceptable

LCV – III.VI. – over 24 – Unacceptable



IV. Tyres, discs, wheel covers

The definition of unacceptable damages for **personal cars** and **LCV** up to 24 months old and older

Terms	Definitions
Dents	Dents or bulges on
A slight deformation	A bodywork deformation, which only is clearly visible in case of a careful investigation – acceptable

Part	Number of the definition	Damages	Vehicle category	
			Car within 24 months	Car over 24 months
IV. Tyres, discs, wheel covers	IV. I	Tyres with tread worse than the requirements of legal regulations	accepted	accepted
	IV. II	Damaged tyres – deformations, punctures, cracks, cuts	not accepted	not accepted
	IV. III	Abraded or scratched discs – circumferential	over 5 cm	over 5 cm
	IV. IV	Abraded or scratched discs – number regardless of size	3 and more	3 and more
		Abraded or scratched discs – non-circumferential	2 and more	2 and more
	IV. V	Deformed discs	not accepted	not accepted
	IV. VI	Cracked, deformed or otherwise broken or missing wheel covers	not accepted	not accepted
IV. VII	Returned without a spare wheel and the complete tyre repair kit	not accepted	not accepted	

Part	Number of the definition	Damages	LCV	
			within 24 months	over 24 months
IV. Tyres, discs, wheel covers	IV. I	Tyres with tread worse than the requirements of legal regulations	accepted	accepted
	IV. II	Damaged tyres – deformations, punctures, cracks, cuts	not accepted	not accepted
	IV. III	Abraded or scratched discs – circumferential	over 5 cm	over 10 cm
	IV. IV	Abraded or scratched discs – number regardless of dimensions	3 and more	5 and more
		Abraded or scratched discs – non-circumferential	2 and more	2 and more
	IV. V	Deformed discs	not accepted	not accepted
	IV. VI	Cracked, deformed or otherwise broken or missing wheel covers	not accepted	not accepted
IV. VII	Returned without a spare wheel and the complete tyre repair kit	not accepted	not accepted	

IV. Tyres, discs, wheel covers

The definition of the unacceptable damages for **personal cars** up to 24 months old and older

Personal Car - IV.II. - Unacceptable



Personal Car - IV.II. - Unacceptable



Personal Car - IV.II. - Unacceptable

Personal Car - IV.III. - within 24 - Acceptable



Personal Car - IV.III. - within 24 - Acceptable

Personal Car - IV.III. - over 24 - Unacceptable



IV. Tyres, discs, wheel covers

The definition of the unacceptable damages for **personal cars** up to 24 months old and older

Personal car – IV.IV. – over 24 – Unacceptable



Personal car – IV.V. – Unacceptable



Personal car – IV.VI. – Unacceptable



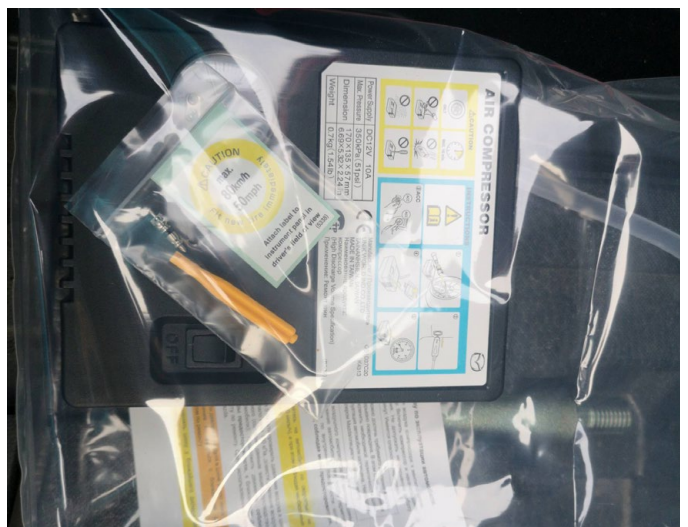
Personal car – IV.IV. – over 24 – Unacceptable



Personal car – IV.V. – Unacceptable



Personal car – IV.VII. – Unacceptable



IV. Tyres, discs, wheel covers

The definition of the unacceptable damages for LCV up to 24 months old and older

LCV – IV.III. – over 24 – Unacceptable

LCV – IV.IV. – Unacceptable



LCV – IV.IV. – Unacceptable



business
lease s.r.o.

V. Other

The definition of unacceptable damages for **personal cars** and **LCV** up to 24 months old and older

Part	Number of the definition	Damages	Vehicle category	
			Car within 24 months	Car over 24 months
V. Other	V. I	Any damaged or unprofessionally installed external accessories	not accepted	not accepted
	V. II	Sealing damages	not accepted	not accepted
	V. III	Any missing or broken parts	not accepted	not accepted
		Vehicle bodywork dirt (dirty vehicle)	not accepted	not accepted
	V. IV	Bodywork dirty from bitumen or concrete	not accepted	not accepted

Part	Number of the definition	Damages	LCV	
			LCV within 24 months	LCV over 24 months
V. Other	V. I	Any damaged or unprofessionally installed external accessories	not accepted	not accepted
	V. II	Sealing damages	not accepted	not accepted
	V. III	Any missing or broken parts	not accepted	not accepted
		Vehicle bodywork dirt (dirty vehicle)	not accepted	not accepted
	V. IV	Bodywork dirty from bitumen or concrete	not accepted	not accepted

V. Other

The definition of the unacceptable damages for **personal cars** up to 24 months old and older

Personal car – V.I. – Unacceptable



Personal car – V.II. – Unacceptable



Personal car – V.III. – Unacceptable



Personal car – V.III. – Unacceptable



Personal car – V.III. – Unacceptable

Personal car – V.IV. – Unacceptable



VI. Interior

The definition of unacceptable damages for **personal cars** and **LCV** up to 24 months old and older

Terms	Definitions
Dents	Dents or bulges on a part of the bodywork visible when viewed ordinarily
A slight deformation	A bodyworks deformation clearly visible only in case of careful investigation – acceptable

Part	Number of the definition	Damages	Vehicle category	
			Car within 24 months	Car over 24 months
VI. Interior	VI. I	Any dirty part of the interior requiring wet, specialized cleaning	not accepted	not accepted
	VI. II	Bad odor in the vehicle's interior	not accepted	not accepted
	VI. III	Any perforations to any part of the interior	not accepted	not accepted
		GPS control – switch, dummy plug	accepted	accepted
	VI. IV	Interior scratches or abrasions (except for luggage compartment or cargo space)	over 2 cm	over 2 cm
		Luggage compartment scratches or abrasions	over 5 cm	over 5 cm
		Luggage compartment scratches or abrasions (more than 5 pcs)	not accepted	not accepted
	VI. V	Any missing, deformed, cracked or otherwise damaged interior parts (except of worn by normal use)	not accepted	not accepted

Part	Number of the definition	Damages	LCV	
			within 24 months	over 24 months
VI. Interior	VI. I	Any dirty part of the interior requiring wet, specialized cleaning	not accepted	not accepted
	VI. II	Bad smell in the vehicle's interior	not accepted	not accepted
	VI. III	Any perforations to any part of the interior	not accepted	not accepted
		GPS control – switch, dummy plug	accepted	accepted
	VI. IV	Interior scratches or abrasions (except for luggage compartment or cargo space)	over 2 cm	over 5 cm
		Luggage compartment scratches or abrasions	-	-
		Luggage compartment scratches or abrasions (more than 5 pcs)	-	-
	VI. V	Any missing, deformed, cracked or otherwise damaged interior parts (except for common tear and wear)	not accepted	not accepted

VI. Interior

The definition of the unacceptable damages for **personal cars** up to 24 months old and older

Personal car – VI.I. – Unacceptable

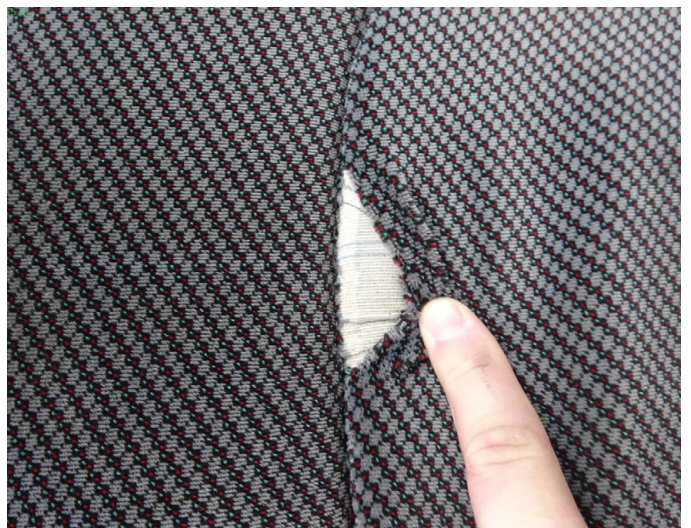


Personal car – VI.I. – Unacceptable



Personal car – VI.I. – Unacceptable

Personal car – VI.III. – Unacceptable



Personal car – VI.III. – Unacceptable

Personal car – VI.IV – Acceptable



VI. Interior

The definition of the unacceptable damages for **personal cars** up to 24 months old and older

Personal car - VI.IV - Unacceptable



Personal car - VI.V. - Unacceptable



Personal car - VI.V. - Acceptable



VI. Interior

The definition of the unacceptable damages for **personal cars** up to 24 months old and older

Personal car – VI.V. – Acceptable

Personal car – VI.V. – Unacceptable



Personal car – VI.V. – Unacceptable

Personal car – VI.VI. – Acceptable



VII. Decals and stickers

The definition of unacceptable damages for **personal cars** and **LCV** up to 24 months old and older

Part	Number of the definition	Damages	Vehicle category	
			Car within 24 months	Car over 24 months
VII. Decals and stickers	VII. I	Decals and stickers left outside the leasing contract	not accepted	not accepted
	VII. II.	Marks after removing any decals or stickers – outside the leasing contract (remnants of glue, faded paint, peeled upper top coat)	not accepted	not accepted

Part	Number of the definition	Damages	Vehicle category	
			LCV within 24 months	LCV over 24 months
VII. Decals and stickers	VII. I	Any damaged or unprofessionally installed external accessories	not accepted	not accepted
	VII. II.	Marks after removing any decals or stickers – outside the leasing contract (remnants of glue, faded paint, peeled upper top coat)	not accepted	not accepted

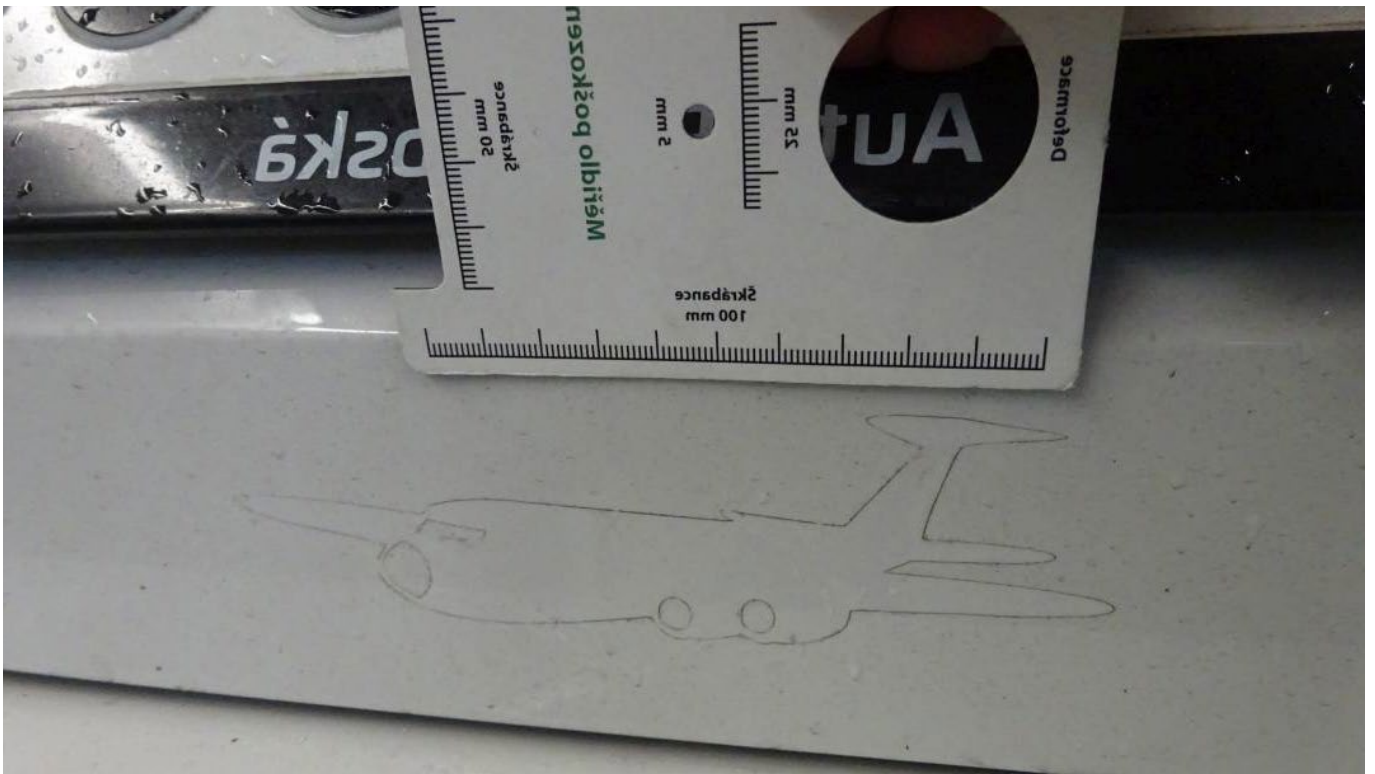
VII. Decals and stickers

The definition of the unacceptable damages for **personal cars** up to 24 months old and older

Personal car – VII.I. – Unacceptable



Personal car – VII.II. – Unacceptable



VIII. Documents and accessories

The definition of unacceptable damages for **personal cars** and **LCV** up to 24 months old and older

Part	Number of the definition	Damages	Vehicle category	
			Car within 24 months	Car over 24 months
VIII. Documents and accessories	VIII. I	Missing complementary accessories, which have been supplied or complemented to the vehicle	not accepted	not accepted
	VIII. II.	Missing vehicle key or code card	not accepted	not accepted
	VIII. III.	Mechanic security of the vehicle not complete	not accepted	not accepted
	VIII. IV.	Missing maintenance service record book (except of from electronic ones)	not accepted	not accepted
	VIII. V	Missing or incomplete vehicle documentation	not accepted	not accepted
	VIII. VI	Missing mandatory vehicle equipment	not accepted	not accepted
	VIII.VII	Fee for new technical inspection instead of old invalid TI + motor emissions inspections Missing maintenance service inspection, i.e. the board computer in the condition "maintenance service or inspection now" or according to the maintenance service book	not accepted	not accepted

Part	Number of the definition	Damages	LCV	
			LCV within 24 months	LCV over 24 months
VIII. Documents and accessories	VIII. I	Missing complementary accessories, which have been supplied or complemented to the vehicle	not accepted	not accepted
	VIII. II.	Missing vehicle key or code card	not accepted	not accepted
	VIII. III.	Incomplete mechanic vehicle securing	not accepted	not accepted
	VIII. IV.	Missing maintenance service record book (apart from electronic ones)	not accepted	not accepted
	VIII. V	Missing or incomplete vehicle documentation	not accepted	not accepted
	VIII. VI	Missing mandatory vehicle equipment	not accepted	not accepted
	VIII.VII	Fee for new technical inspection instead of old invalid TI + motor emissions inspections Missing maintenance service inspection, i.e. the board computer in the condition "maintenance service or inspection now" or according to the maintenance service book	not accepted	not accepted

IX. Cargo space (LCV)

The definition of unacceptable damages for **LCV** up to 24 months old and older

Terms	Definitions
Dent	Dents or bulges on a part of the bodywork visible when viewed ordinarily
A slight deformation	A bodywork deformation, which only is clearly visible in case of a careful investigation – acceptable

Part	Number of the definition	Damages	Vehicle category	
			LCV within 24 months	LCV over 24 months
IX. Cargo space (LCV)	IX.I	Any corrosion marks	not accepted	not accepted
	IX.II	Deformations and abraded interior parts of the cargo space (except for bodywork parts)	acceptable	acceptable
	IX.III	Cargo space parts cracks (except for bodywork parts)	not accepted	not accepted
	IX.IV	Any damages limiting the operation of doors, windows or locks	not accepted	not accepted
	IX.V	Perforations, unprofessional holes	not accepted	not accepted

IX. Cargo space (LCV)

The definition of the unacceptable damages for LCV up to 24 months old and older

LCV - IX.I. - Unacceptable



LCV - IX.II. - Acceptable



LCV - IX.II. - Acceptable



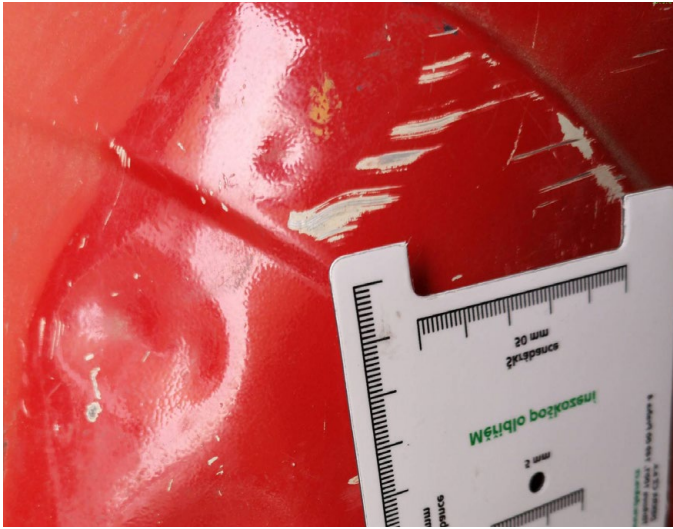
LCV - IX.II. - Acceptable



IX. Cargo space (LCV)

The definition of the unacceptable damages for LCV up to 24 months old and older

LCV - IX.II. - Unacceptable



LCV - IX.II. - Unacceptable



LCV - IX.II. - Unacceptable



LCV - IX.IV. - Unacceptable



LCV - IX.IV. - Unacceptable



LCV - IX.V. - Unacceptable



IX. Cargo space (LCV)

The definition of the unacceptable damages for LCV up to 24 months old and older

LCV - IX.V. - Unacceptable



LCV - IX.VI. - Unacceptable



LCV - IX.VI. - Unacceptable





BUSINESS LEASE
PASSION FOR MOBILITY

www.businesslease.cz