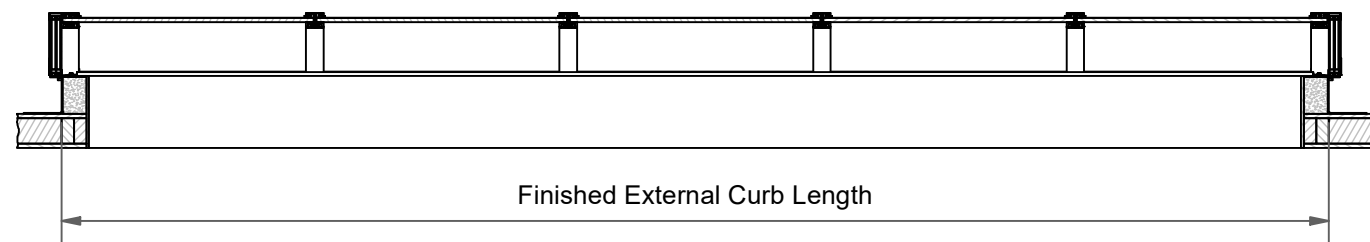
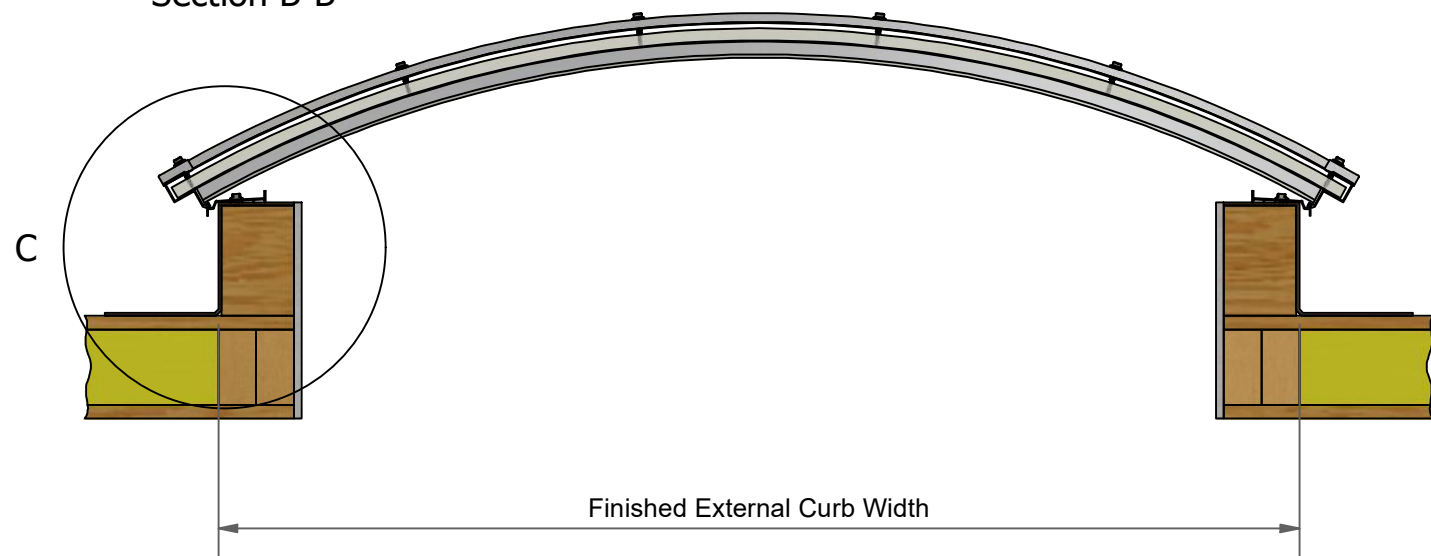


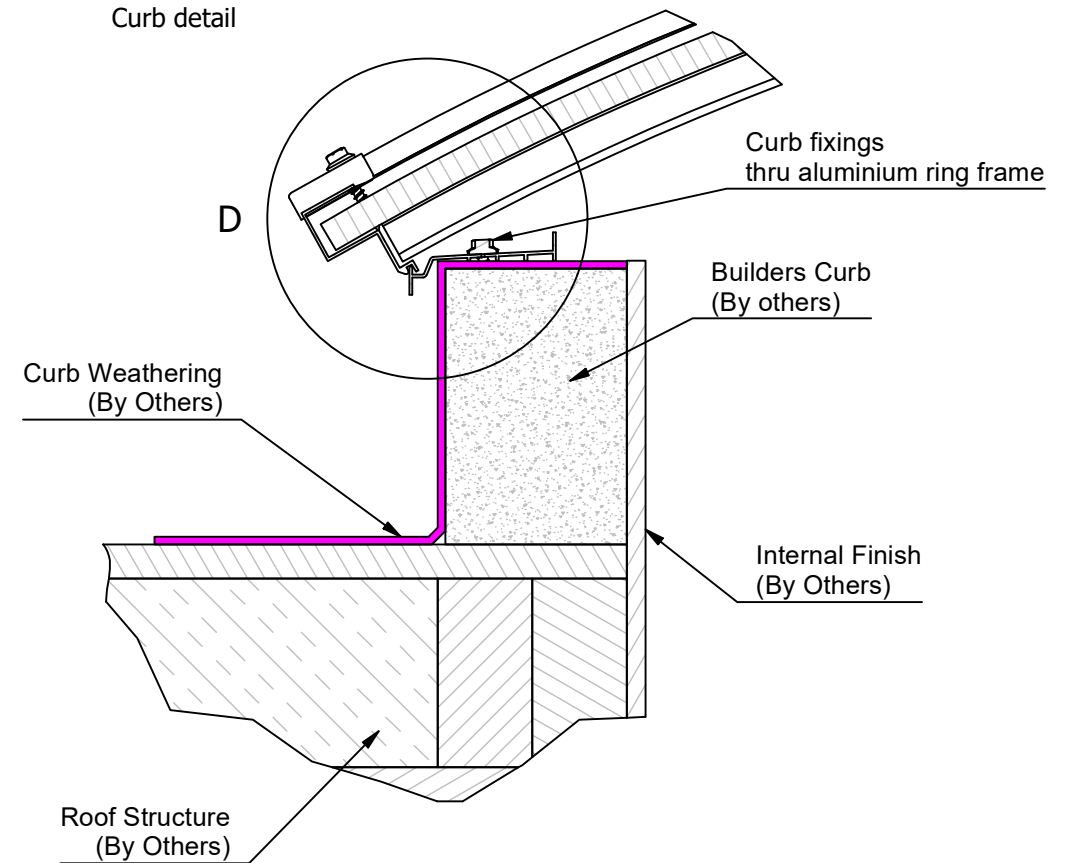
Section A-A



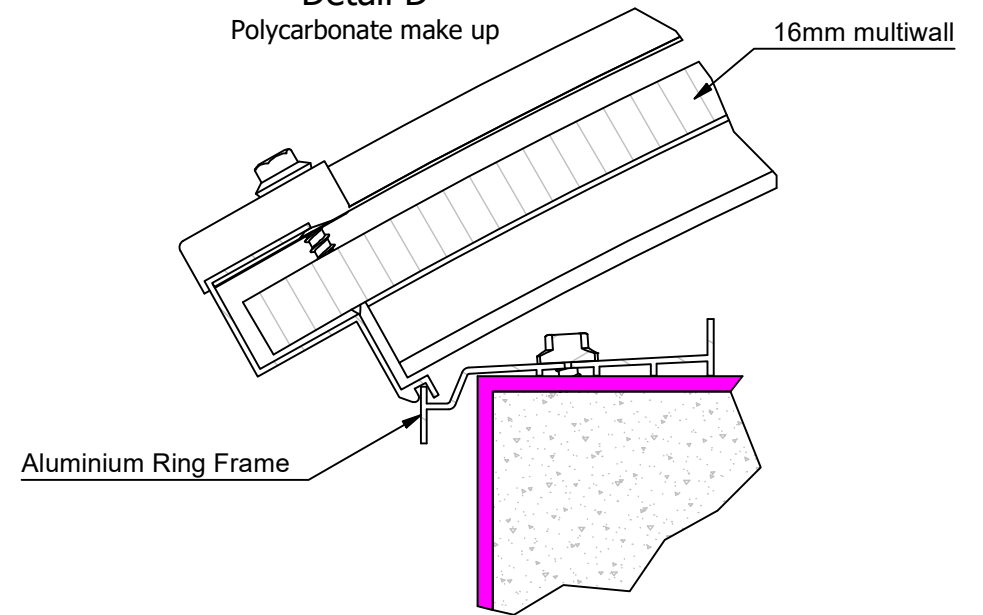
Section B-B



Detail C
Curb detail



Detail D
Polycarbonate make up



NOTES:

- Em-Vault low rise continuous barrel vault rooflight with mill finish aluminium ring frame and vertical glazed solid aluminium end panels.
- Unit to be glazed with Polycarbonate Multiwall 16mm (UV Protected to both sides)
- System designed at 1/6th rise.



Curb details shown are indicative only. Detail is designed by others.
It is the responsibility of the curb designer to ensure that the curb is structurally adequate to support the rooflight product.

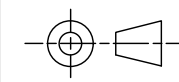
**This drawing is for visual purposes only,
for exact specifications of the glazing and sizes,
please refer to the specific line(s) on your quote.**

CAUTION CDM: Hazard Identification - Handling materials
Manual Handling Operations Regulations (MHOR 1992) sets out a clear ranking of measures for dealing with risks from manual handling. Ensure measures are considered at all times. Other measures:



- Hand protection (mandatory) to: BS EN 388:1994.
- Wear appropriate PPE required for the task.
- Refer to applicable risk assessment for further details.

THIS DRAWING MUST
NOT BE COPIED OR
PASSED TO A THIRD
PARTY WITHOUT
WRITTEN CONSENT
FROM THE
MANUFACTURER



Title:

Continuous Barrel Vault Layout Detail

Project No

Project

xxx

Customer Name

Project Address

xxx

Description

Continuous Barrel Vault

Ref No

xxx

Part Number

Barrel Vault Assembly

Material

Varies

Finish

Quantity

As Material

1

Name

Created

L.Crawford

Drawn

L.Crawford

Approved

Checked

Drawing No.

CBV.1.TD.1

Sheet number 1 of 2

Scale DNS

Size: A3

Units: mm

Date

23/10/2017

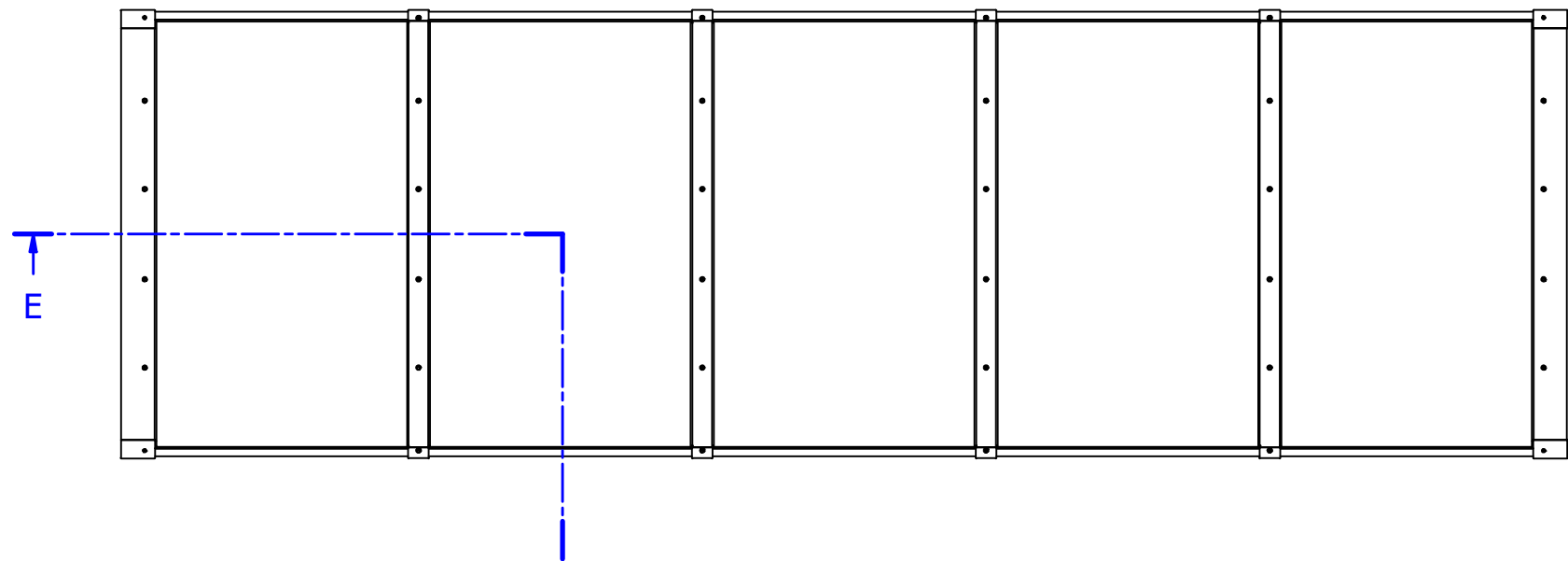
25/11/2020

Revision: 1

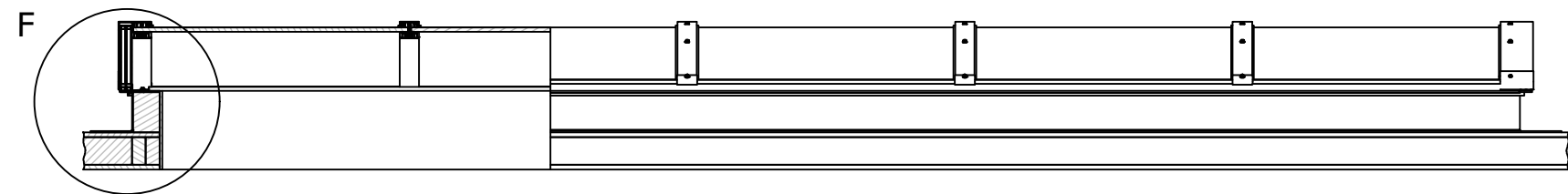


Whitesales Ltd
Europa House
Cranleigh
GU6 8NQ

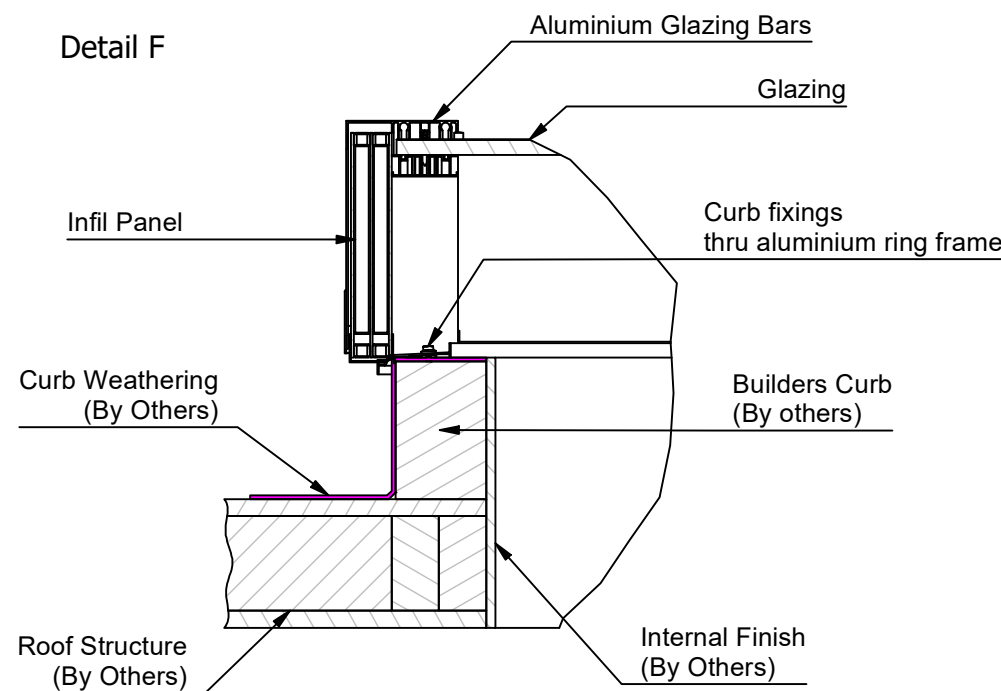
T: +44(0)1483 917580
E: sales@whitesales.co.uk
W: whitesales.co.uk



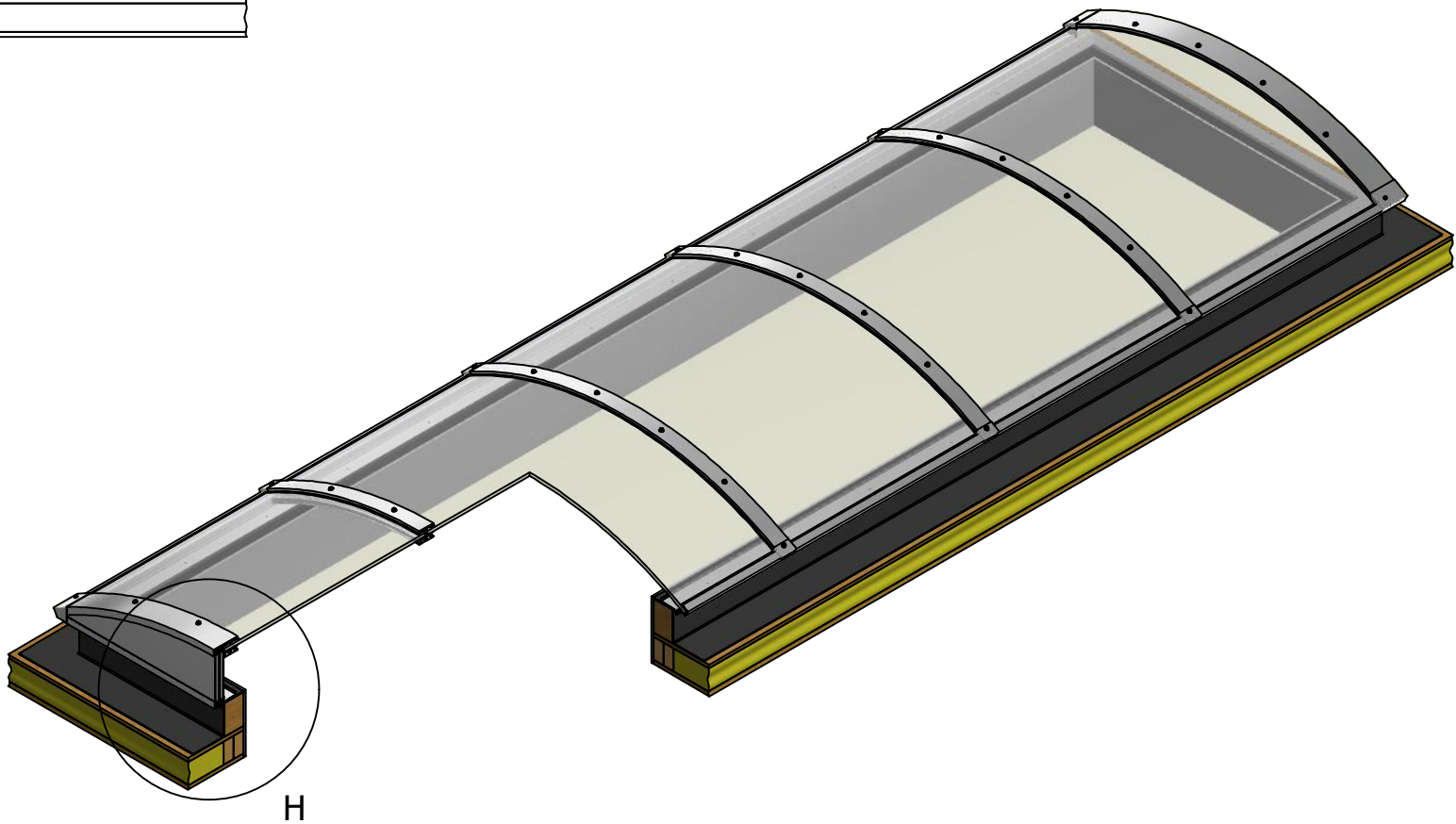
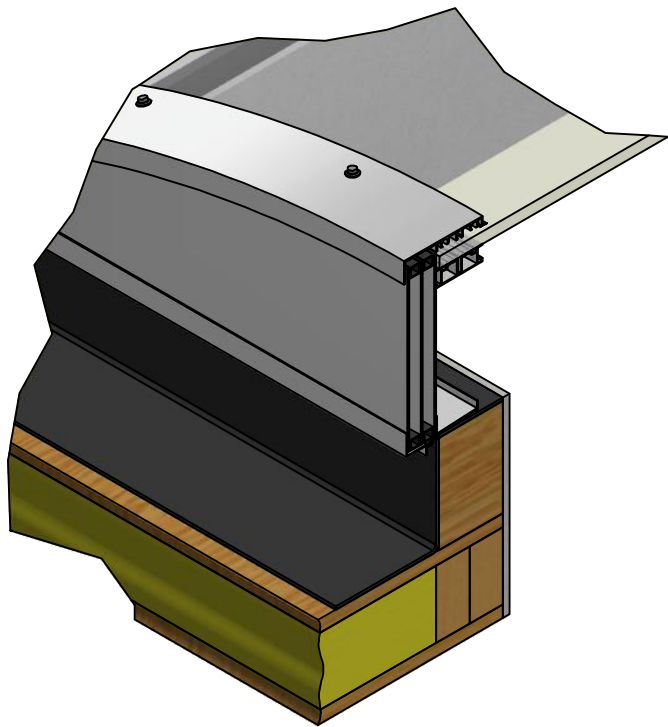
Section E-E



Detail F



Detail H



NOTES:

- Em-Vault low rise continuous barrel vault rooflight with mill finish aluminium ring frame and vertical glazed solid aluminium end panels.
- Unit to be glazed with Polycarbonate Multiwall 16mm (UV Protected to both sides)
- System designed at 1/6th rise.



Curb details shown are indicative only. Detail is designed by others.
It is the responsibility of the curb designer to ensure that the curb is structurally adequate to support the rooflight product.

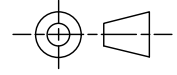
**This drawing is for visual purposes only,
for exact specifications of the glazing and sizes,
please refer to the specific line(s) on your quote.**

CAUTION CDM: Hazard Identification - Handling materials
Manual Handling Operations Regulations (MHOR 1992) sets out a clear ranking of measures for dealing with risks from manual handling. Ensure measures are considered at all times. Other measures:



- Hand protection (mandatory) to: BS EN 388:1994.
- Wear appropriate PPE required for the task.
- Refer to applicable risk assessment for further details.

THIS DRAWING MUST
NOT BE COPIED OR
PASSED TO A THIRD
PARTY WITHOUT
WRITTEN CONSENT
FROM THE
MANUFACTURER



Title:

Continuous Barrel Vault Layout Detail

Project No

Project

xxx

Customer Name

Project Address

xxx

Description

Continuous Barrel Vault

Ref No

Part Number

Barrel Vault Assembly

Material

Varies

Finish

Quantity

xxx

Barrel Vault Assembly

Material

Varies

As Material

1

Name

Created

Drawn

Approved

Checked

Drawing No.

Sheet number 2 of 2

Scale DNS

Size: A3

Date

23/10/2017

25/11/2020

Revision: 1

Units: mm



whitesales
experience.brighter

Whitesales Ltd
Europa House
Cranleigh
GU6 8NQ

T: +44(0)1483 917580
E: sales@whitesales.co.uk
W: whitesales.co.uk