

SPIRALIFT® SLV

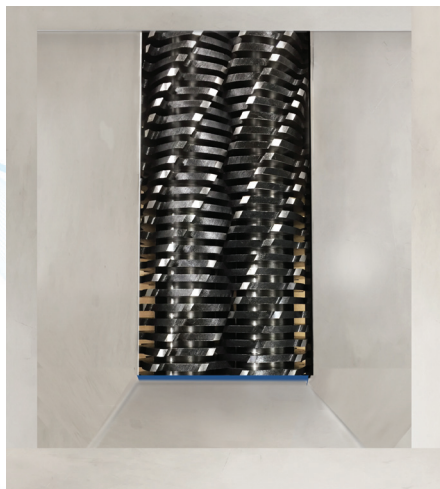
Screening with Vertical Lift

The SPIRALIFT® SLV is a unique vertical screen system that conveys solids straight up so it fits in tight places where no other screen can be installed. This unit combines TASKMASTER® grinding technology with a vertical screw screen to provide fine screening of solids entrained in liquid flows. The SPIRALIFT SLV is ideal for pump stations and wet wells.

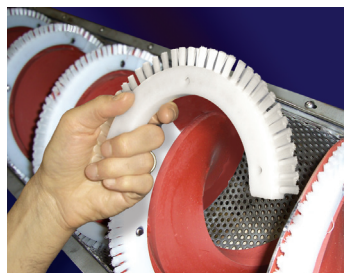
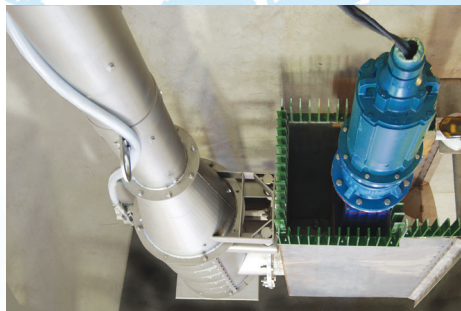
**Fits into Tight Locations | Vertical Screw Screen
Protects Pumps | Fine Screening and Conveying**

Operation

The solids are first reduced and conditioned by a TASKMASTER® grinder. The reduced solids and liquids then flow into the screen area. The solids are swept from the perforated screen by brushes mounted on the perimeter of the rotating auger. Next, they are conveyed vertically up the unit's transport tube and dropped out of a discharge tube into a bin, bag or container. The unit's drain tube returns liquids to the system.



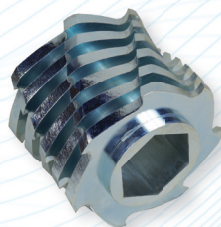
The TASKMASTER TM8500 cutting chamber.



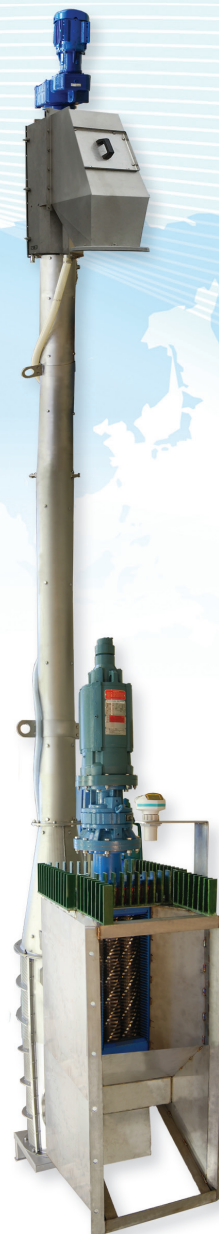
Segmented nylon brushes offer high strength and convenience.

Construction

The SPIRALIFT SLV is provided in three models for flow rates up to 3.8 mgd (155 l/s) and up to 34 ft (11 m) in height. The high-strength, easily replaceable segmented brushes are provided in sections and are removable by simply unbolting. The unit's housing is constructed of corrosion-resistant stainless steel. A system controller and level sensor are provided with the unit. Options include: submersible motor, heat tracing, bagger and FRP wet well enclosure.

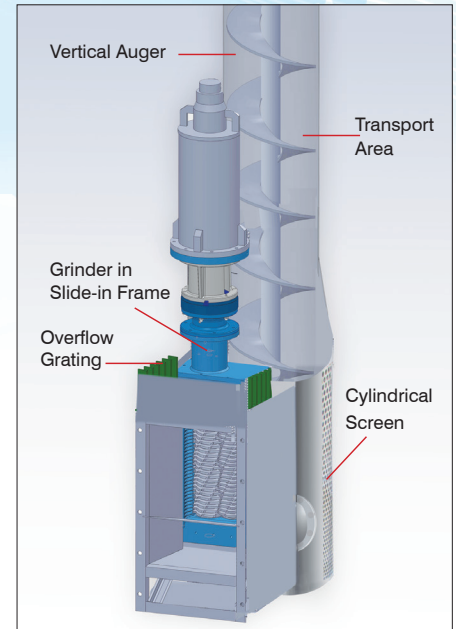
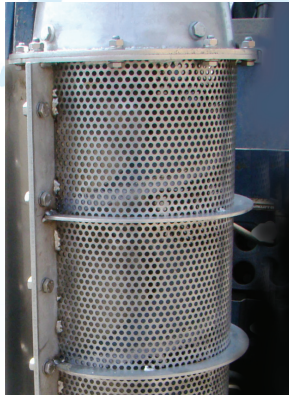


The TASKMASTER TM8500 grinder employs Cutter Cartridge® technology which reduces maintenance and increases unit strength.



Features

The SPIRALIFT SLV features a vertical auger and cylindrical screen basket with 1/4" (6 mm) perforations. Heavy duty nylon brushes are bolted onto the auger perimeter and sweep the screen. The brushes can be accessed and replaced with the unit in place by unbolting the screen flanges. The TASKMASTER® grinder slide-in frame provides for independent removal of the grinder. An overflow grating is provided at the unit inlet. All hardware is stainless steel.



Front of auger housing removed for illustration purposes.

S270 Control System:

An S270 Automatic Control System monitors and controls system operation. This PLC driven unit is provided standard in a NEMA 4X FRP enclosure. System functions include sequence timing, grinder and spiral jam sensing and jogging function, level control override and spray-wash solenoid control.



Standard Models

Model No.	Max. Flow Level	Channel Width	Screen Basket Diameter	Max. Flow MGD (l/s)	Grinder HP (kW)	Screw HP (kW)
SLV12	24" - 54" (610 - 1372 mm)	16" - 36" (406 - 914 mm)	12" (305 mm)	0.6 (25)	3 - 5 (2.2 - 3.7)	2 (1.5)
SLV20	40" - 60" (1016 - 1524 mm)	24" - 48" (610 - 1219 mm)	20" (508 mm)	1.6 (70)	3 - 5 (2.2 - 3.7)	2 (1.5)
SLV28	40" - 60" (1016 - 1524 mm)	32" - 60" (813 - 1524 mm)	28" (711 mm)	3.5 (155)	3 - 5 (2.2 - 3.7)	2 (1.5)

US gallon = 3.79 liters

Contact factory for certified drawing.



Convenient continuous bag hose for safe and convenient disposal.