



BEACON IN THE STORM



yellowstoneclubfoundation.org

2020 **ANNUAL REPORT**



YCCF

Yellowstone Club Community Foundation was established in 2010 to provide support and resources to nonprofit organizations in Big Sky and the greater Gallatin Valley community. The Foundation provides grants to organizations that promote community services, arts, education, behavioral health, and conservation efforts.

As our partnerships have grown, so has our commitment and impact on the community-awarding nearly \$14 million since we started this journey.

DEAR YC COMMUNITY

2020 is a year that will go down in history. The challenges presented by the Covid-19 Pandemic brought our community together like never before. Thanks to our donors' generosity and the collaborative efforts of the private and public sectors, we mobilized quickly and effectively to form Big Sky Relief. **Through this collaboration, we have protected individuals and organizations impacted early on by the pandemic and continue to support our community-awarding over \$4 Million through the Big Sky Relief Fund.**

Although our fundraising events were interrupted this year, the Foundation still carried on with our mission in supporting important initiatives for the communities we serve. Initiatives such as work force housing by funding a grant to Habitat for Humanity of Gallatin Valley to construct housing for Big Sky School

District teachers and our support of the Big Sky Community Housing Trust-Down Payment Assistance program. The Foundation continued support for community youth through preschool tuition assistance and other scholarships and remains a lead supporter of the Gallatin Valley Food Bank's Kids Pack Program. **Perhaps most significant during 2020 was our commitment to mental health by forming the Behavioral Health Coalition.**

For all the positive that the Foundation has brought to our community, it is difficult not to also acknowledge the hardship and loss that the events of 2020 have meant for many of our friends and neighbors near and far. There are still challenges, whether Covid related or not, that we must tackle, and together we will.

We will continue to strive to meet the evolving needs of this growing part of southwest Montana in lifting up nonprofits and the boots-on-the-ground organizations making a tangible impact in our community. **2020 has reminded us that even though we live in a world of uncertainty, one thing that remains the same-we are stronger when we work together.**

- YCCF Board of Directors



STRATEGIC IMPACT FUNDS

»»» Big Sky Relief Fund

Created in March 2020 under the umbrella of YCCF, Big Sky Relief is a collaboration of Yellowstone Club Community Foundation, Moonlight Community Foundation, Spanish Peaks Community Foundation, and Big Sky Area Resort Tax. **Throughout 2020 BSRF collectively awarded more than \$4M to support our community through financial awards to individuals related to loss of wages due to COVID-19, grants to nonprofits affected by the pandemic, support of the Big Sky Medical Center, and financial resources for the community Covid-19 surveillance testing.**

»»» Behavioral Health

In response to the region's lack of mental health resources, combined with the increasing need, YCCF took on a leadership role in creating the Behavioral Health Coalition. This coalition of founding partners includes Bozeman Health- Big Sky Medical Center, Western Montana Mental Health Center, and the Yellowstone Club Community Foundation to expand and improve the behavioral health continuum of services available throughout Big Sky.

»»» Big Sky Medical Center

At the start of the pandemic, the Foundation provided \$276K in funding to Bozeman Health to construct additional treatment rooms at the Big Sky Medical Center. This expansion was a part of the long-term planning for the Medical Center. As a result of support from YCCF, BSMC was able to begin and complete construction quickly in preparation for the critical need for additional hospital beds.

2020 also marked the successful culmination of the multi-year commitment from our YC Member donor base, who initially stepped up five years ago to establish a fund for the Big Sky Medical Center.

»»» Big Sky Community Center

After the conclusion of a tremendously successful capital campaign, along with the planning and permitting-construction of the BASE Community Center began in 2020! **Commitments by several YC Members to the new Community Center translated into a \$2,367,485 annual contribution in 2020 to the Big Sky Community Organization for BASE, which is on schedule to open its doors in the beginning of 2022.**

»»» Belgrade Library Capital Campaign

YCCF awarded \$100K to the capital campaign to construct a new library on Main Street in Belgrade. This public and private partnership in which the Belgrade Library Foundation raised private funding coupled with a public bond will have a lasting impact on the community with the completion of this new facility.

»»» Warren Miller Performing Arts Center

Throughout the pandemic, WMPAC continued to offer world-class performances and interactive experiences, providing much-needed entertainment and connections for the community. **YCCF provided support for the adaptation of the space and additional technology to continue providing high-quality, safe access to theater and performance art.**

HIGHLIGHTS

\$4 MILLION
COLLECTIVELY
INVESTED INTO
THE COMMUNITY

\$737K
AWARDED
IN GRANTS

\$60K
NEARLY
AWARDED IN
SPONSORSHIPS

SCHOLARSHIP PROGRAM

»»» Corey Griffin Scholarship

Awarded three \$5,000 scholarships to high school students from Gallatin Valley, who most closely exemplify Corey's passionate support and leadership for causes in which he believed, along with his philosophy, and having the courage to create change.

»»» Rieschel Family STEM Scholarship

This \$5,000 scholarship was awarded to a high school senior in Gallatin Valley pursuing education in science, technology, engineering, or math.

»»» Friends of Big Sky Education Scholarship

One Lone Peak High School student received two \$3,000 scholarships for their freshman and sophomore years of college.

»»» Montana Wilderness School

\$3,000 awarded to aid with tuition of an underserved Gallatin County youth seeking to attend a MWS multi-week summer course.



»»» Leadership Montana Scholarship

YCCF supports 50% of the tuition for a local nonprofit leader to attend this training.



The scholarship funds provided by the YCCF significantly mitigated the financial cost of my college education during my freshman at Belmont University in Nashville, TN. Though this year was certainly a challenge, I was fortunate to be able to live on campus and attend a few classes in person. Despite the strange circumstances, I found encouragement in the "never quit" attitude exemplified by Corey, which I sought to display myself when challenging circumstances arose.

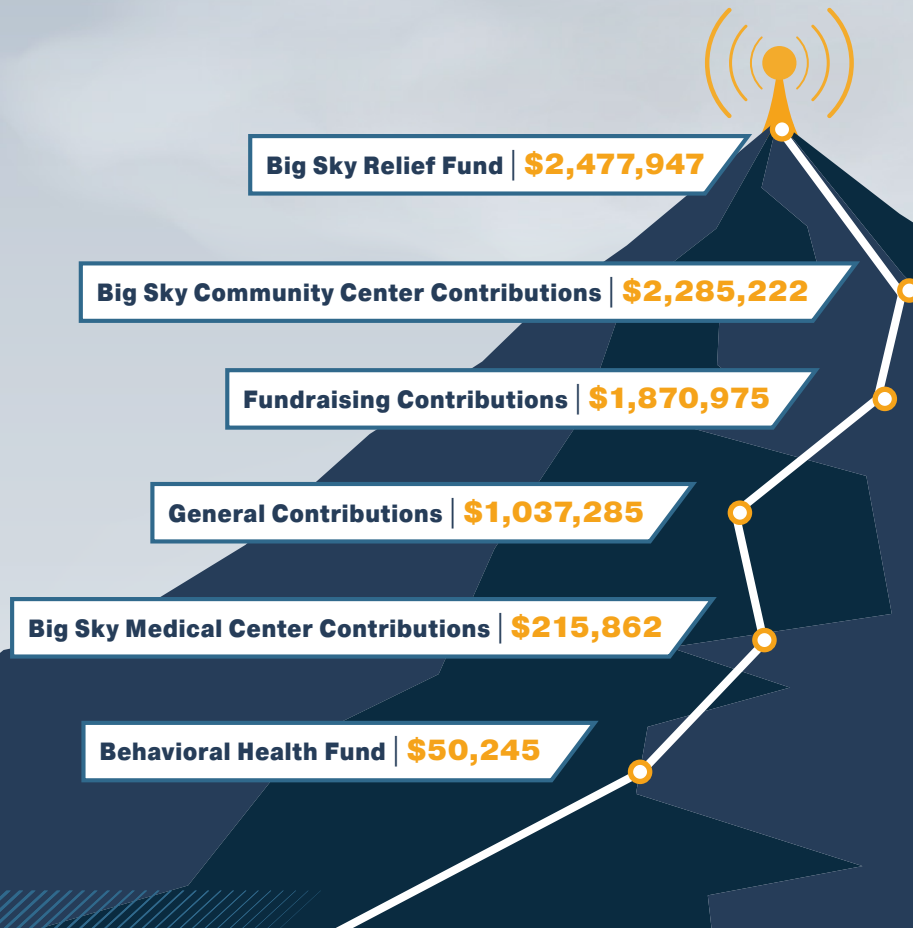
- 2020 Corey Griffin Scholarship Recipient

FINANCIALS

10/1/2019 - 9/30/2020

Total Contributions 2020

General Contributions	\$1,037,285
Big Sky Medical Center Contributions	\$215,862
Big Sky Community Center Contributions	\$2,285,222
Fundraising Contributions	\$1,870,975
Behavioral Health Fund	\$50,245
Big Sky Relief Fund	\$2,477,947
Total Contributions and Support	\$7,937,536

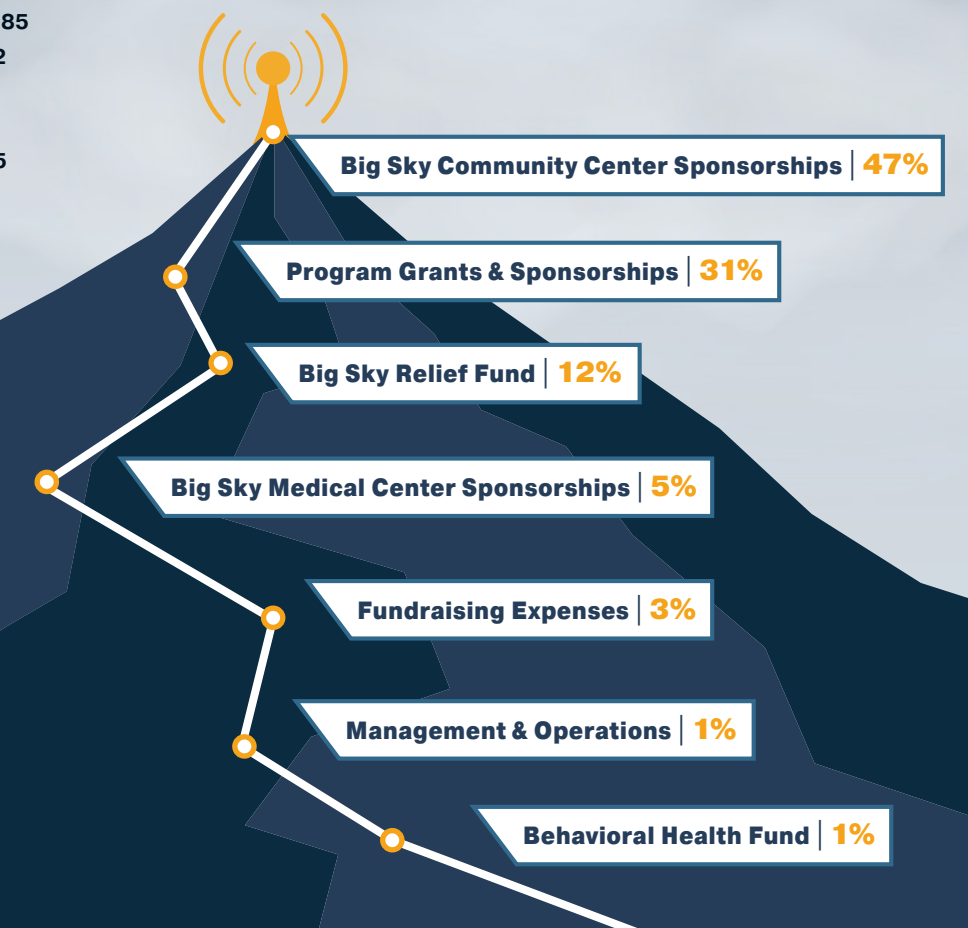


Distribution of Grants and Expenses

Program Grants & Sponsorships	\$1,548,103
Big Sky Medical Center Sponsorships	\$277,720
Big Sky Community Center Sponsorships	\$2,367,485
Fundraising Expenses	\$139,592
Management & Operations	\$31,990
Behavioral Health Fund	\$44,994
Big Sky Relief Fund	\$613,275

Total Distribution of Grants and Expenses \$5,023,159

*Audited financial statements may be obtained from YCCF.
yellowstoneclubfoundation.org



SUPPORTED ORGANIZATIONS

Absaroka-Beartooth Wilderness Foundation
Adventurers & Scientists for Conservation
American Red Cross of Montana
Arts Council of Big Sky
Belgrade Library Foundation
Big Brothers Big Sisters of Gallatin County
Big Sky Youth Empowerment
Big Sky Community Organization
Big Sky Community Housing Trust
Big Sky Discovery Academy
Big Sky Futbol Club
Big Sky Rotary-Sustainability Committee
Big Sky Skating & Hockey Association
Big Sky Ski Education Foundation
Big Sky Transportation District
Bozeman Area Community Foundation
Bozeman Health Foundation
Bozeman Deaconess Foundation
Bozeman Public Library Foundation
Bozeman Swimming Club
Bozeman Symphony Society
Cancer Support Community
Central Valley Fire District
Child Care Connections

The COMMIT Foundation
Eagle Mount Bozeman
Emerson Center for the Arts & Culture
Fork and Spoon
Friends of Big Sky Education
Gallatin Invasive Species Alliance
Gallatin River Task Force
Gallatin Valley Food Bank
Greater Gallatin United Way
Grizzly & Wolf Discovery Center
Hans Saari Memorial Fund
HATCH
Haven
Heart of the Valley Animal Shelter
Historic Crail Ranch Conservators
Intermountain Opera Bozeman
Montana Chamber Music Society
Montana Hope Project
Montana Land Reliance
Montana Outdoor Science School
Montana Shakespeare in the Parks
Morningstar Learning Center
One Montana
PSIA – NRM
Ronald McDonald Charities of MT

Rotary District 5390 Foundation
Special Olympics Montana
Suffer Out Loud
TEDx Bozeman
Thrive
Toys for Tots
Volunteers of America Northern Rockies
Warren Miller Performing Arts Center
Western Montana Mental Health Center-
Gallatin Campus
Women In Action
Yellowstone Boys and Girls Ranch
Yellowstone Country Guardians

YCCF BOARD MEMBERS

Board of Directors

Sam Byrne - President
Loren Bough - Vice President
Charlie Callander - Secretary/Treasurer
Joanie Hall
Wendy Johnson
Andrew McEntire
Melinda Reed
Yucca Rieschel
Steve Taylor
Maud Welles

Advisory Board

Ciara Wolfe - V.P. of Philanthropy
Jacque Poertner - Associate Director
Mike Bourret - V.P. of Accounting & Finance
Amy Arneson - Senior Accountant
Hans Williamson - Chief Operating Officer/
General Manager
Frank Acito - Chief Financial Officer

The background of the entire page is a dark blue night sky filled with small white dots representing stars. In the center, a mountain range is depicted with stylized, layered peaks in various shades of blue and black. The highest peak is topped with a yellow beacon icon consisting of a central dot and three concentric curved lines radiating outwards.

BEACON IN THE STORM

yellowstoneclubfoundation.org

2020 **ANNUAL REPORT**

