

Neat Pleat Drapery Control System

Seamless Workroom LLC

Amanda Deal Smith and Rose Mary LeBlanc



In this presentation I will show you two easy methods for controlling drapery panels:

Fan folding

Neat Pleat Drapery Control System

Did you ever install panels and they flare out and won't dress out properly?

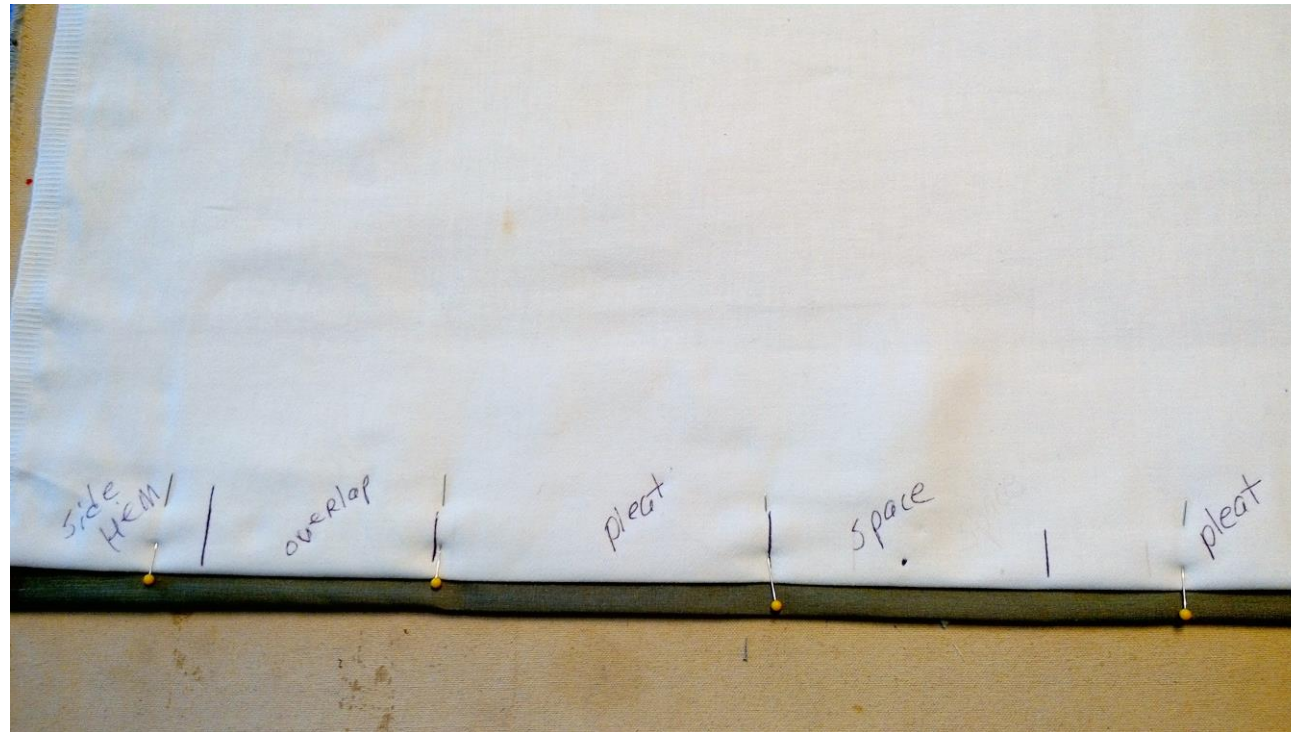
I have devised a simple system to control panels and keep them dressed out. Neat Pleat Drapery Control System works for both stationary and traversing panels.

You can do this with items that you probably already have in your workroom.

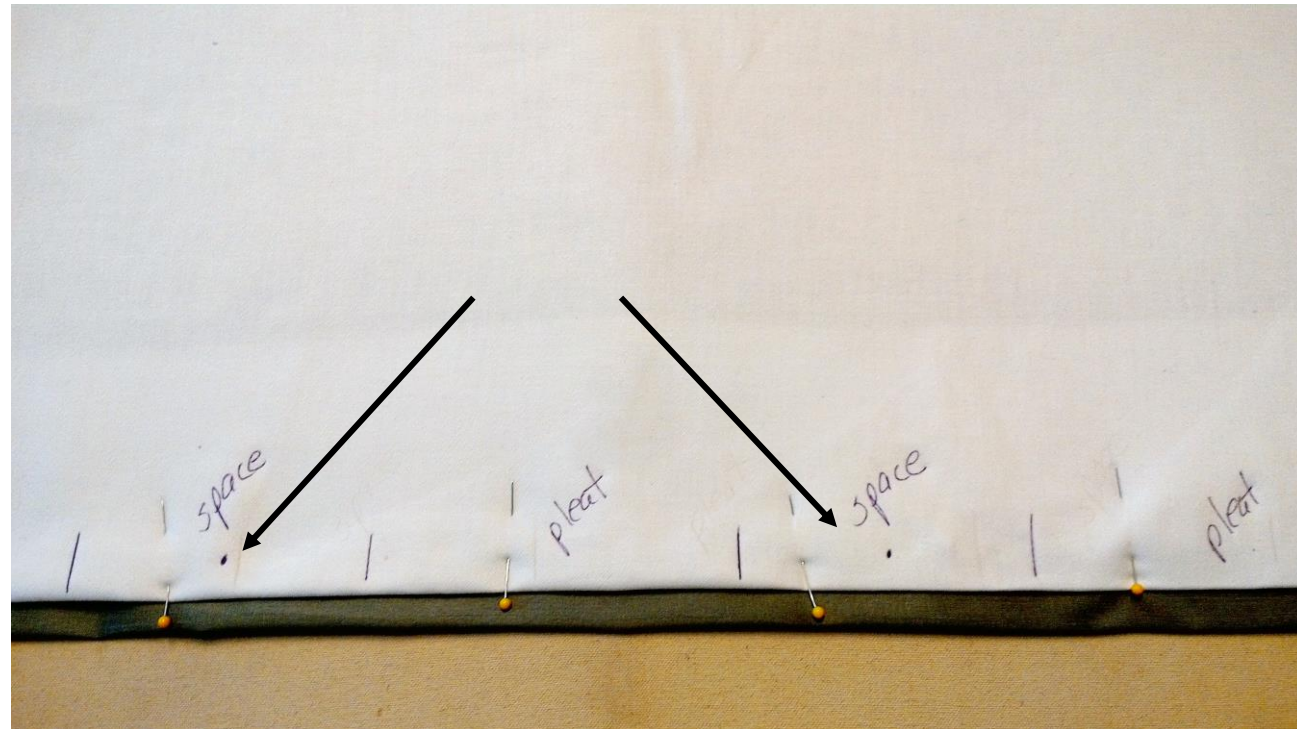


The first step is to fan fold the panels. Here is an easy way to do it.

Mark pleats, spaces, overlap, return and side hems. Put a dot in the center of each space.



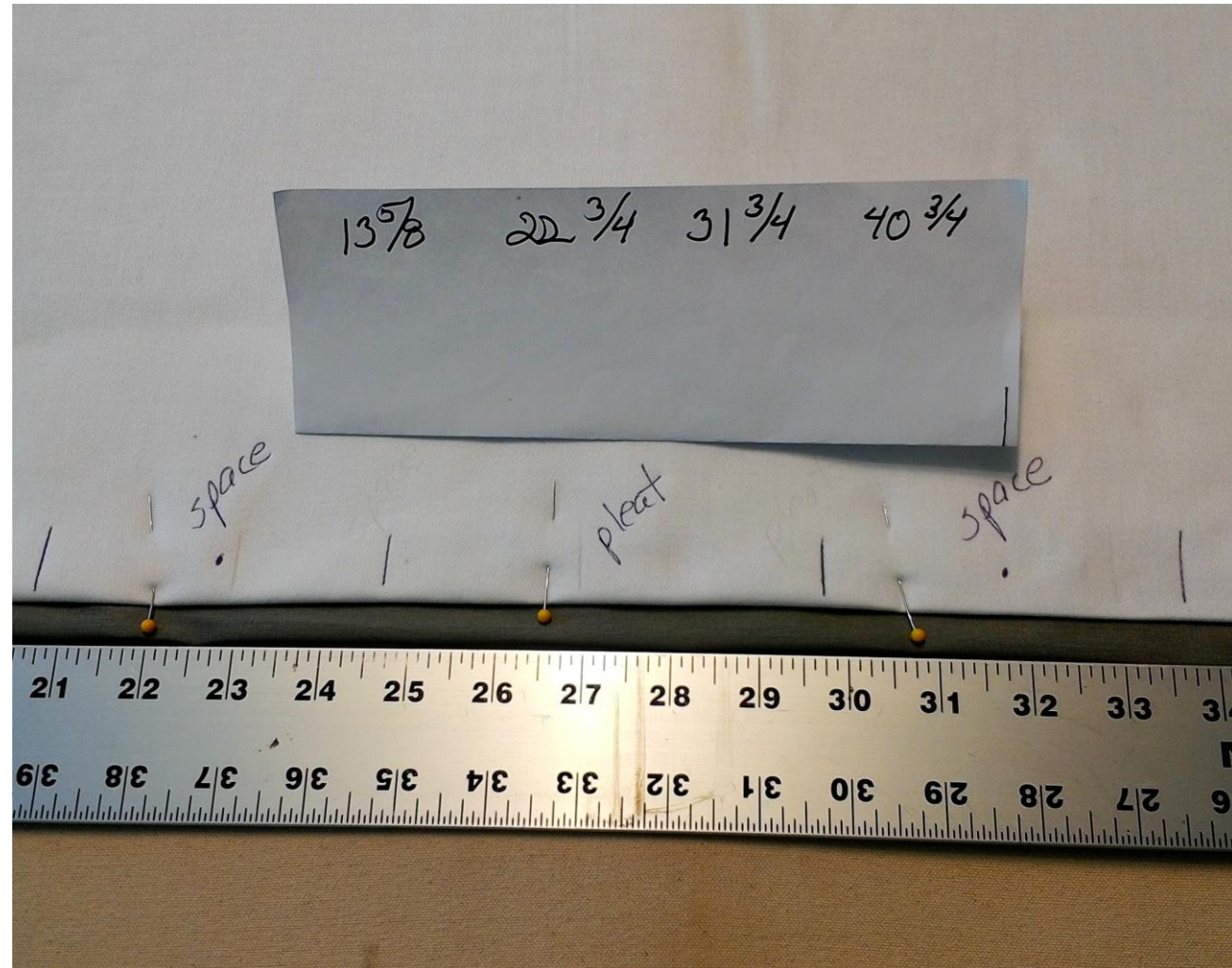
Dots in the centers of all spaces.



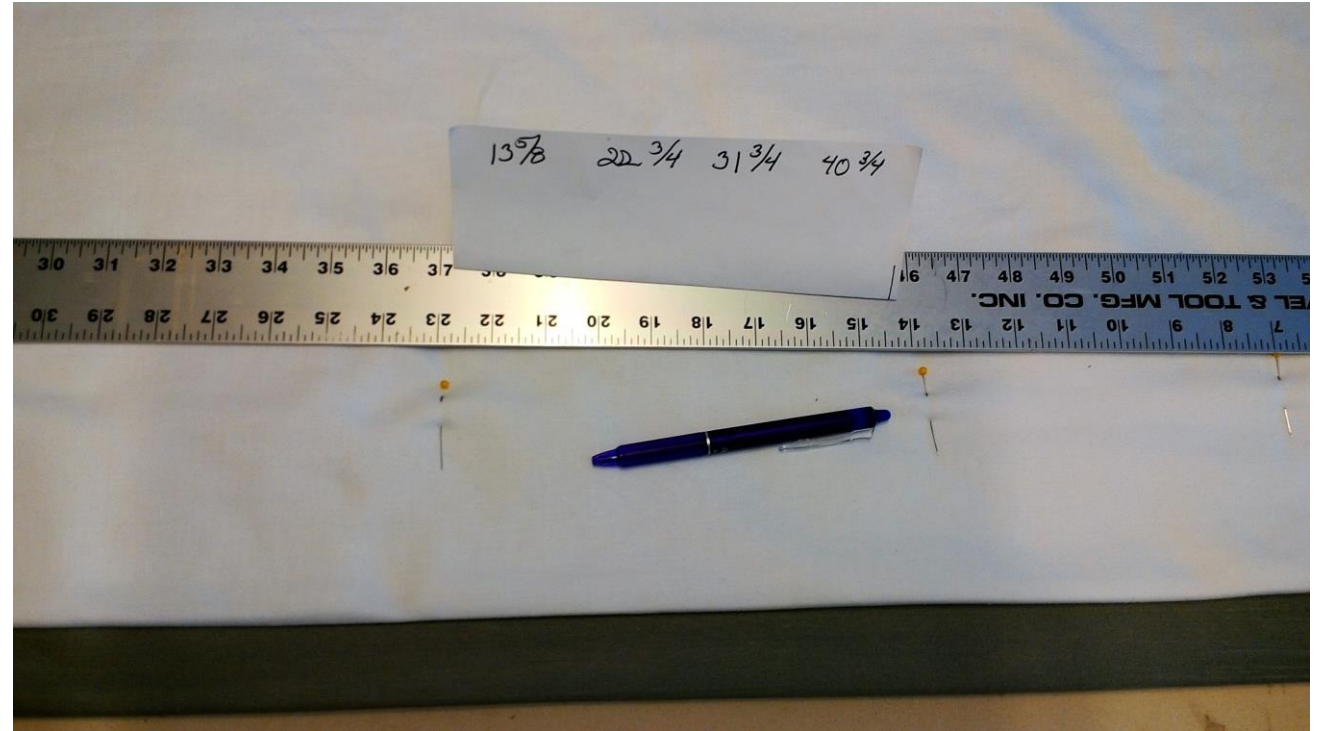
Lay a long ruler along the top starting from the fabric edge at the side hem on the leading edge side.



- Measure the distance from fabric edge to the center of each space.
- Continue on for all of the spaces.
- Write down your measurements.

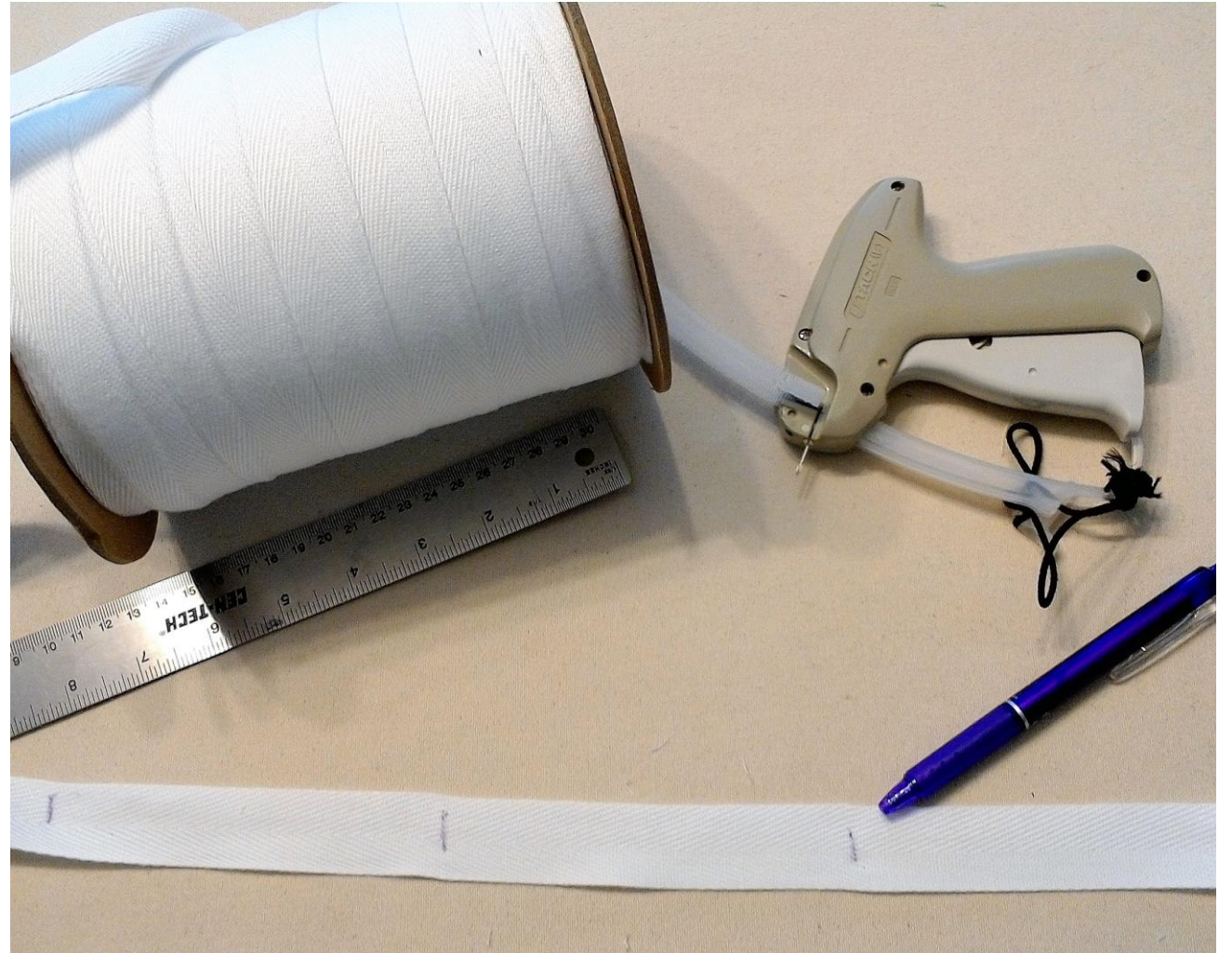


- Move the ruler down to the bottom hem.
- Lay the ruler on the panel starting at the leading edge and mark the corresponding measurements from the spaces.
- Mark at the top of the hems.
- Continue all along the bottom hem until all of the measurements are marked.
- Mark side hems, leading edge, and return.
- Place a pin at this mark through all layers



Prepare the Twill Tape

- You will need simple tools and supplies:
- 1" Twill tape
- Tag gun
- Ruler
- Marker
- Mark the twill tape the same measurement as the spaces.

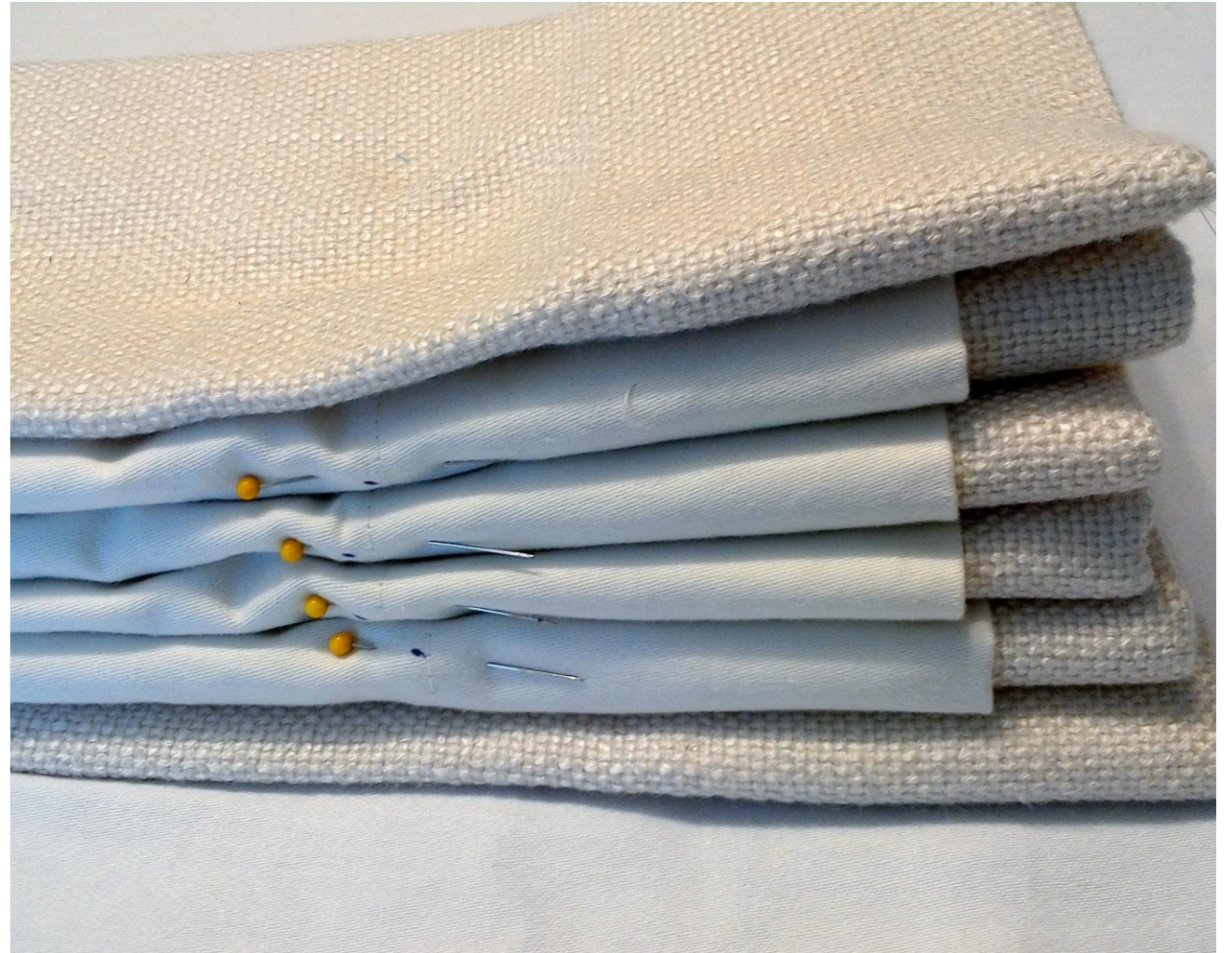


Fan Fold

Bring pin to pin and space dot to space dot.

It doesn't matter whether you fan fold toward you or away from you. The result will be the same.

Fold over the leading edge and return so that the pleat lines match up.



Applying The Neat Pleat Twill Tape

- Now you are ready to Neat Pleat.
- Mark the measurements for the leading edge and the return
- Start with either the leading edge or the return
- Fold over the edge of the twill tape and tag at the first pin



Continue on to tag the rest of the pins and twill tape.



The finished Neat Pleat Drapery Control System.



The finished panels neatly dressed out and no flaring!



Thank you for viewing this presentation.

© Rose Mary LeBlanc 2017

Amanda Deal Smith

Seamless Workroom LLC

www.seamlessworkroom.com