

# How does night vision work?

## Ask a (mighty) owl!



### Eye experiment

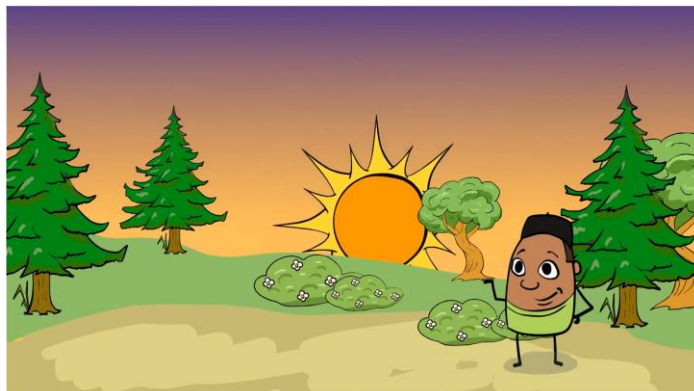
We learned that rods in our eyes detect light and cones detect color. Owls have a lot more rods in their eyes than cones, helping them filter even more light.

#### Instructions:

1. With a parent, head outside around dusk — when the sun starts to set and it begins to transition from day to night.
2. Find a single tree trunk to focus your attention on.
3. Stare at it for about 30 seconds. Don't move your head!
4. What happened to the tree? Did it seem to disappear?

#### Result:

This happened because the cone cells in your eyes could not detect any color and as the light fades away into night, it tricks your eyes into thinking the tree disappeared. So cool!



Visit us for much more at [mightyowl.com](http://mightyowl.com)